

Monday Thru Saturday, Dec. 8-13, 1952  
Matinee Wednesday and Saturday

# *The Auditorium*

Direction of Will R. Corris, R. B. Corris

LELAND HAYWARD

presents



## Irving Berlin's "Call Me Madam"

with

ELAINE STRITCH - KENT SMITH

David Daniels - Terry Taylor - Pat Harrington

Ralph Chambers - Alexander Clark

Jay Velie

Music and Lyrics by IRVING BERLIN

Book by HOWARD LINDSAY and RUSSEL CROUSE

Directed by GEORGE ABBOTT

Dances and Musical Numbers Staged by JEROME ROBBINS

Scenery and Costumes Designed by RAOUL PENE DU BOIS

Musical Conductor - PHIL INGALLS

Orchestrations by DON WALKER

Additional Orchestrations by JOE GLOVER

Dance Music Arrangements by GENEVIEVE PITOT and JESSE MEEKER

# the PLAYGOER



After  
the  
Play

New York State Champagne

Champagne and Fine Wines by

*Great Western*

WINES SINCE 1860

THE PLEASANT VALLEY WINE COMPANY, RHEIMS, HAMMONDSPORT, N. Y.

## ● QUALITY REAL ESTATE

SINCE  
1907

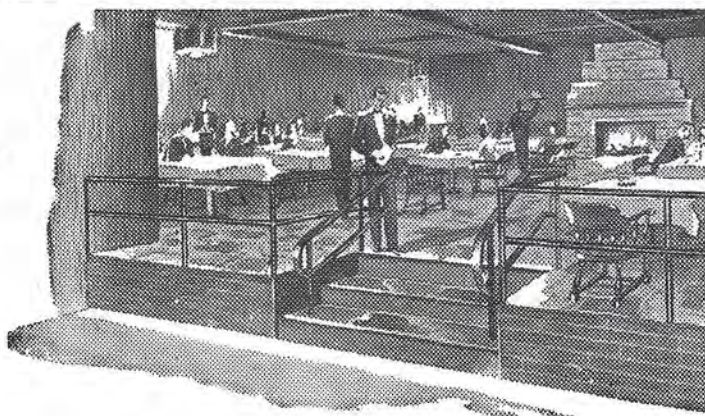
HAmlton  
8500

**GOUTREMOUT**  
REALTOR

● 803 Union Trust Building

## FOR A TREAT BEFORE OR AFTER THE THEATRE

- SHRIMP
- LOBSTER
- CRABMEAT
- STEAKS
- CHOPS



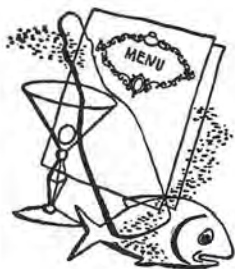
*Clintonaire*

**RESTAURANT**

69-75 CLINTON AVE.. S.

Dinner at the Clintonaire makes every evening "out" one to be remembered. Whether you come before or after the theatre, you'll find tempting seafood delicacies, courteous service, and a leisurely, restful atmosphere . . . in Rochester's finest restaurant.





...after the show...or anytime you want good food

# The Eggleston RESTAURANT

47 Clinton Ave. South

Across from The Seneca

## THE CAST

IN ORDER OF APPEARANCE

MRS. SALLY ADAMS	ELAINE STRITCH
(Neither the character of Mrs. Sally Adams nor Miss Elaine Stritch resembles any other person alive or dead.)	
THE SECRETARY OF STATE	FAIRFAX BURGER
SUPREME COURT JUSTICE	OWEN COLL
CONGRESSMAN WILKENS	PAT HARRINGTON
HENRY GIBSON	WILLIAM DAVID
KENNETH GIBSON	DAVID DANIELS
SENATOR GALLAGHER	RALPH CHAMBERS
SECRETARY TO MRS. ADAMS	JO FRANCIS
BUTLER	WILLIAM HAIL
SENATOR BROCKBANK	JAY VELIE
COSMO CONSTANTINE	KENT SMITH
PEMBERTON MAXWELL	ALEXANDER CLARK
CLERK	STANLEY SIMMONDS
HUGO TANTINNIN	WILL SCHOLZ



Receiving Line?      No! Golden Wedding Line!

For the perfect marriage of mildness and good taste... try

## GOLDEN WEDDING



BLENDED WHISKEY • 86 PROOF • 70% GRAIN NEUTRAL SPIRITS • JOSEPH S. FINCH & CO., ALADDIN, PA.

# MUSIC

Trio ensemble of Violin, Cello and Piano playing music for listening enjoyment.

for special occasions, wedding receptions, banquets, fashion shows.

## SUSAN TOMPKINS QUERY TRIO

HAmlton 7501

► *Rocket ahead*

WITH

► **OLDSMOBILE**

Now on Display  
at FINCHER'S

*Open every evening 'til 9*

► **FINCHER**

18 SOUTH UNION ST.

HAmlton 8440

Ladies are requested  
to remove their hats.

# Who's Who in the Cast

**ELAINE STRITCH**—One of the theater's most talented and attractive contributions to the realm of footlights and grease paint is Elaine Stritch. She is in one of the best roles an actress could imagine—the part of Madam Ambassador in Irving Berlin's big musical. In Washington, D. C., last May 30, she assumed the role created by Ethel Merman and Elaine has been all the way to Seattle and back without missing a performance (despite two sprained ankles on occasions) in the title role.

A graduate from Sacre Coeur Convent in Detroit, Miss Stritch underwent the usual hard knocks along the rocky road to fame and fortune and name-up-in-lights which show business calls its school of experience. She worked her way through Piscator's course in acting downtown in Greenwich Village where a couple of her contemporaries, since heard from, were Marlon Brando and Walter Matthau. She says she was fired a few times while attempting parts that proved too old for her, but clicked in a fine musical entitled "Angel in the Wings." Her portrayal of the tough newspaper reporter in the current revival of "Pal Joey" stopped every show as she delivered the famous "Zip" song.

**KENT SMITH**—is one of the original University Players, a fabulous group that had its genesis among Princeton actors and grew to include such subsequently famous persons as Henry Fonda, Joshua Logan, Margaret Sullivan, Myron McCormick and Mildred Natwick. His most recent appearances on Broadway in "Autumn Garden," "Burning Bright" and "The Wisteria Trees" brought him extravagant critical acclaim.

Mr. Smith has scored in such films as "The Land Is Mine," "My Foolish Heart," "The Victim," "The Spiral Staircase," "The Voice of the Turtle," "Nora Prentiss," "The Fountainhead" and "This Side of the Law."

Kent Smith's birthplace is Smithville, Maine, and his stage debut was made in "Men Must Fight." Important roles with Fay Bainter and Walter Huston came his way, and then he appeared in four of Katharine Cornell's productions: "Saint Joan," "The Wingless Victory," "Candida" and "Antony and Cleopatra."





# Casa Lorenzo

33 CHESTNUT STREET  
BAKER 4960

After the show . . . or  
anytime . . . for best in  
food and beverages.

*Private banquet rooms for  
25 to 225 persons.*

## THE CAST

IN ORDER OF APPEARANCE

- |                      |   |
|----------------------|---|
| SEBASTIAN SABASTIAN  | CLIFF DUNSTAN   |
| PRINCESS MARIA       | TERRY TAYLOR  |
| COURT CHAMBERLAIN    | WILLIAM DAVID   |
| A MAID               | JO ANN O'CONNELL  |
| GRAND DUCHESS SOPHIE | FRANCES CLARK   |
| GRAND DUKE OTTO      | OWEN COLL   |
| PRINCIPAL DANCERS    | MARY ALYCE KUBES, ROBERT BAKANIC<br>CONCHITA DEL RIVERO, KIP CARLISLE |
| THE "POTATO BUGS"    | JACK KELLY, JOHN SHEEHAN  |
- SINGERS:** Rae Abruzzo, Jane Carlyle, Nora O'Caillaigh, Barbara Cavanaugh, Fannie Cusanelli, Jo Francis, Jo Ann O'Connell, Louise Hoffman, George Burles, Paul B. Brown, William Hail, Max Hart, John Mooney, Douglas Rideout, Gene Scott, John Sheehan and Stanley Simmonds.
- DANCERS:** Marie Johnson, Devra Kline, Mary Alyce Kubes, Joan McCallum, Janice Roman, Conchita del Rivero, Diane Rupe, Victor Anderson, Robert Bakanic, Kip Carlisle, Alberto Felciano, Richard Maitland, Charles Owens, Robert Petrovich.

*You feel at home*

choose at leisure the  
best in popular or  
classical records  
and albums.



*at the*

**MONROE  
RECORD  
SHOP**

**RADIOS  
PHONOGRAPHS  
TOO!**

**PERSONALIZED SERVICE**  
is our note to your musical enjoyment

Service—always  
with YOU in  
mind.

**MONROE RECORD SHOP**  
**772 MONROE AVENUE**      **MONroe 6422**

Open Daily 10 A. M. to 9 P. M., except Thursday 10 A. M. to 6 P. M.  
OWNED AND OPERATED BY HERMAN SURASKY Violinist, Rochester Philharmonic Orchestra

*Smart Dining at Moderate Cost!*

# Town and Country

ROCHESTER'S FINEST RESTAURANT

*Open Daily for* **LUNCH • DINNER • SUPPER**

**SUNDAY EVENING BUFFET SUPPER**

5 to 8 o'clock

**Dancing Every Sat. Night—10 to 2**

No Minimum—No Cover

Rooms are available for private functions

FOR RESERVATION CALL BA. 6533



**town & country**  
ARTISTRY IN FOOD AND ATMOSPHERE

eleven  
gibbs  
street

## Coming to the Eastman

**GEORGE SHEARING**

Keyboard King!

and his **QUINTETTE**

Featuring **TEDDI KING**, Vocalist

Singing: Love, Your Magic Spell, The Love I Long For, Easy to Remember.

Also Programmed: September in the Rain, High High the Moon, Somewhere Over the Rainbow, I'll Remember April, and many more.

Guest Artists With

**CIVIC ORCHESTRA**

**PAUL WHITE**, Conducting

**SUN. EVE., DEC. 14**

Seats from \$1 to \$1.90

**FAMILY NIGHT CONCERT**

Prokofieff's "Peter and the Wolf"

featuring **LOWELL MacMILLAN**, Narrator  
with the

**ROCHESTER PHILHARMONIC**

**ERICH LEINSDORF**, Conductor

Also Music by Bizet, Debussy,  
Ravel and MacDonald

**THURS. EVE., DEC. 18**

Seats from \$1.50 to \$3.25

**CHILDREN'S CHRISTMAS BALLET**

2 Colorful Ballets — 100 Dancers

Music By

**CIVIC ORCH., PAUL WHITE**, Conducting

**SAT., DEC. 27 — 2:30 P. M.**

Orch.: \$1; Mezz.: \$1.10; Bal. & Loge: 75c  
(unreserved)

**FOR A FUN - FILLED NEW YEAR'S EVE!**

**MASK & WIG CLUB** of the University of Pennsylvania

"HERE'S HOWE!"

A musical comedy of old Philadelphia

**WEDNESDAY EVENING, DECEMBER 31**

Seats from \$2.50 to \$4.90

**EASTMAN THEATRE**

of the  
University of Rochester

# Jewett

I N C.  
EAST AVENUE  
at ALEXANDER

*Dresses*      *Suits*      *Coats*  
*Millinery*      *Lingerie*      *Accessories*

## SYNOPSIS OF SCENES

The play is laid in two mythical countries. One is called Lichtenburg, the other the United States of America.

Time: Once Upon A.

### ACT I

1. Office of the Secretary of State, Washington, in the reign of Harry the First.
2. Sally's Living Room, Washington.
3. Public Square in Lichtenburg
4. Reception Room in the American Embassy
5. Public Square in Lichtenburg
6. The Lichtenburg Fair
7. A Corridor in the Palace
8. Sally's Sitting Room in the Embassy

### ACT II

1. The Public Square
2. The Embassy Garden
3. The Public Square
4. Sally's Sitting Room
5. Sally's Living Room in Washington

Leading artists choose Rochester Picture Framing Co. to frame their works. You, too, will prefer the expert craftsmanship and wide selection for your cherished photographs and favorite paintings.



**Rochester Picture Framing Co.**

**ART . . .**

- PRINTS
- FRAMING

422 Court Street  
near Broadway





Before or after the show . . .

# Antonio's Restaurant

51 ELM STREET

Serving { FINE FOODS  
DELICIOUS COCKTAILS



We Cater to Parties and Banquets — EMpire 0864

## MUSICAL NUMBERS—ACT I

Mrs. Sally Adams . . . . .	The Company
The Hostess with the Mostes' on the Ball . . . . .	Elaine Stritch
Washington Square Dance . . . . .	Elaine Stritch and Company
Lichtenburg . . . . .	Kent Smith and Singers
Can You Use Any Money Today? . . . . .	Elaine Stritch
Marrying for Love . . . . .	Kent Smith and Elaine Stritch
The Ocarina . . . . .	Terry Taylor, Kip Carlisle, Potato Bugs and Company
It's a Lovely Day Today . . . . .	David Daniels and Terry Taylor
It's a Lovely Day Today (Reprise) . . . . .	{ David Daniels, Mary Alyce Kubes, Robert Bakanic and The Company
The Best Thing for You Would be Me . . . . .	Elaine Stritch and Kent Smith

# AMOCO GASOLINE



for a  
brilliant performance  
in all seasons

## THE HUB OIL CO. Inc.

DISTRIBUTORS

Genesee 0515

McKEE ROAD • ROCHESTER 11, N. Y.





## PORTRAITS

Your picture will be  
a treasured gift.

Linn Duncan Studio

## WEDDING PICTURES

Candid and  
formal portraits

### MUSICAL NUMBERS—ACT II

Lichtenburg (Reprise)	Kent Smith and Singers
Something to Dance About	Elaine Stritch, Victor Anderson, Joan McCallum, Conchita del Rivero, Kip Carlisle and Company
Once Upon a Time Today	David Daniels
Fourth of July	Pat Harrington, Ralph Chambers, Jay Velie
You're Just in Love	Elaine Stritch, David Daniels
The Best Thing for You Would Be Me (Reprise)	Elaine Stritch and Kent Smith
It's a Lovely Day Today (Reprise)	David Daniels and Terry Taylor
Mrs. Sally Adams	The Company
Finale	Elaine Stritch and Company

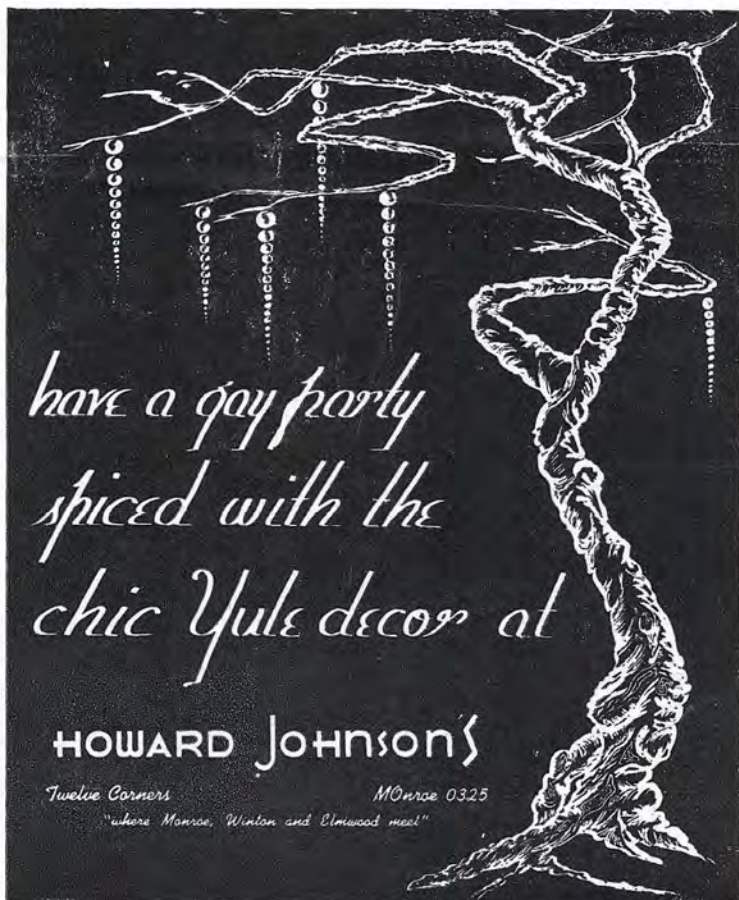
*have a gay party  
spiced with the  
chic Yule decor at*

**HOWARD JOHNSON'S**

Twelve Corners

Monroe 0325

"where Monroe, Winton and Elmwood meet"



## PARENTS!

We will rent you a brand new Kimball Consolelette . . . choose any style you want from our stock. Call or write for information on our Rental-Purchase plan for beginners.

## Oster Piano Studio

3400 LAKE AVE.

CHarlot 3573 }

### Kimball Pianos



*The Keyboard  
Of the Nation*

## THE PLAYGOER

for the Auditorium Theatre

Published by Rochester Playgoer Co.

16 State St., Rochester 14, N. Y., BAKer 2235

National Advertising Representative

NATIONAL THEATRE MAGAZINES

258 Fifth Avenue • New York 1, N. Y.



*Merry  
Christmas*



**FIRE NOTICE**—Look around NOW and choose the nearest Exit to your seat. In case of fire WALK (not run) to that Exit. Do not try to beat your neighbor to the street.



*after the  
theatre . . .  
stop for a  
snack*

## Burgundy Cafe

*Fountain Service  
Open 'til Midnight*

45 CHESTNUT ST.



***we  
want  
to  
help  
you***



We want to do more than provide a dependable supply of electric and gas service to all our customers. We will do everything we can to help you to get the most efficient and economical use out of such service. Please call us when you think we can help.

**RGE  
AND**



## LELAND HAYWARD PRODUCTIONS

"Mister Roberts," "State of the Union," "Point of No Return," "Anne of the Thousand Days," "A Bell for Adano," "South Pacific," with Rodgers and Hammerstein, and "Wish You Were Here."

Assistants to Raoul Pene Du Bois ..... Mason Arvold, Willa Kim, Waldo Angelo  
Assistants to Jerome Robbins ..... June Graham, Don Saddler  
Vocal Arrangements by ..... Jay Blackton  
Piano Arrangements by ..... Helmy Krese

### UNDERSTUDIES for "CALL ME MADAM"

NOTE: Understudies never substitute for listed players unless a specific announcement of the appearance is made at the time of the performance.

MRS. SALLY ADAMS ..... RAE ABRUZZO

COSMO CONSTANTINE ..... WILLIAM HAIL

The Secretary of State and Senator Gallagher, John Mooney; Supreme Court Justice, George Burles; Grand Duke Otto and Congressman Wilkens, Stanley Simmonds; Clerk and Senator Brockbank, Max Hart; Henry Gibson and Court Chamberlain, John Sheehan; Pemberton Maxwell and Sebastian Sabastian, Douglas Rideout; Hugo Tantinnin, Paul Brown; A Maid and Secretary to Mrs. Adams, Barbara Cavanaugh; Grand Duchess Sophie, Jane Carlyle; Kenneth Gibson, Gene Scott; Princess Maria, Barbara Cavanaugh.

### STAFF FOR LELAND HAYWARD

General Manager .....	Herman Bernstein	Assistant Conductor .....	Howard Kaye
Company Manager .....	Harry Essex	Master Electrician .....	Chick Hess
Press Representative .....	Bev Kelley	Master of Properties .....	Fred Lee
Production Stage Manager .....	Fred Hearn	Master Carpenter .....	Thomas Elliott
Stage Manager .....	Walter Johnson	Wardrobe Mistress .....	Ida Laureyns
Assistant Stage Manager .....	John Sheehan	Assistant Wardrobe Mistress ..	Louise Warning
Musical Contractor .....	Sol Gusikoff		

### CREDITS

Scenery built and painted by Studio Alliance. Costumes executed by Karinska. Men's modern and evening clothes by Henry Mulle, Inc. Electrical equipment by Century Lighting, Inc. Flowers by Universal Flower and Decorating Co. Dancing shoes by Capezio, other shoes by LaRay. Jewelry by Karu, Inc. Stockings and gloves by Jessie Zimmer. Furniture by Newel Art Galleries and Studio Alliance. Costume fabrics by Gladstone. Front curtain fabric by Guy Gil. Draperies and upholstery by I. Weiss & Son. Park and Tilford products used. Watches by Bulova Watch Co. Miss Stritch's portfolio designed by Main Bocher, executed by Cablentz Bags, Inc. Drapery fabrics by Frankel Associates and Dazian's, Inc. "Color-spra" for the hair used by Mr. Burgher supplied by Occasion Cosmetic Company, Hollywood, California.

PIANO—COURTESY OF WURLITZER COMPANY



# Wm. J. Schmitt, Inc.

118 BROWN ST.

HAmilton 3840

**ROOFING**

**INSULATION**

**SHEET METAL WORK**

# The Auditorium

FRI.-SAT., DEC. 19-20 — MATINEE SATURDAY



SHEPARD TRAUBE  
(by arrangement with Irene Mayer Selznick)  
Presents

JOAN ZACHARY  
BENNETT SCOTT

IN PERSON

THE BEWITCHING COMEDY SUCCESS



## "Bell, Book and Candle"

Directed by SHEPARD TRAUBE

with DOROTHY SANDS

from the production by JOHN VAN DRUTEN

Miss Bennett's clothes created by VALENTINA

Scenery by GEORGE JENKINS

Plan a Gala Christmas Party for Your Office or  
Plant at the Auditorium—Phone MONroe 0889 for Details

Eves.—Orch.: \$4.20, \$3.60; Loges: \$3.60; Bal.: \$2.40, \$1.80.

MAT.—Orch.: \$3.60, \$3.00; Loges: \$3.00; Balc.: \$2.40, \$1.80. Tax Incl.

—THIS IS A WILL R. & R. B. CORRIS PRESENTATION—



Order now for . . .

- Holiday Parties
- Gift Giving
- Personal Enjoyment

Rochester's largest selection of  
imported wines from

FRANCE • SPAIN  
ITALY • PORTUGAL  
GERMANY • HUNGARY

PLUS a full stock of wines from  
the 14 best vineyards in America

ALL YOUR FAVORITE  
BRANDS ARE AT

PARISIAN LIQUOR STORE

1517 LAKE AVENUE near Ridge Road • GLENWOOD 4152