

Kodak Photographic Papers

ATHENA
100 SHEETS 8 x 10 in. 100.3 x 25.4 cm.
DOUBLE WEIGHT **G-2**

VELOX
100 SHEETS 8 x 10 in. 100.3 x 25.4 cm.
F-1

AZO
100 SHEETS 8 x 10 in. 100.3 x 25.4 cm.
DOUBLE WEIGHT **E-0**

ILLUSTRATORS'
100 SHEETS 8 x 10 in. 100.3 x 25.4 cm.
DOUBLE WEIGHT **E**

KODABROMIDE
100 SHEETS 8 x 10 in. 100.3 x 25.4 cm.
DOUBLE WEIGHT **N-2**

ROYAL BROMIDE
100 SHEETS 8 x 10 in. 100.3 x 25.4 cm.
F-2

VELOX RAPID
100 SHEETS 8 x 10 in. 100.3 x 25.4 cm.
F-3

RESISTO RAPID
100 SHEETS 8 x 10 in. 100.3 x 25.4 cm.
N-4

PORTRAIT PROOF
100 SHEETS 8 x 10 in. 100.3 x 25.4 cm.
R

Kodak DOUBLE WEIGHT
100 SHEETS 8 x 10 in. 100.3 x 25.4 cm.
ARISTO
G-1

AD-TYPE
100 SHEETS 8 x 10 in. 100.3 x 25.4 cm.
A-2

RESISTO
100 SHEETS 8 x 10 in. 100.3 x 25.4 cm.
N-2

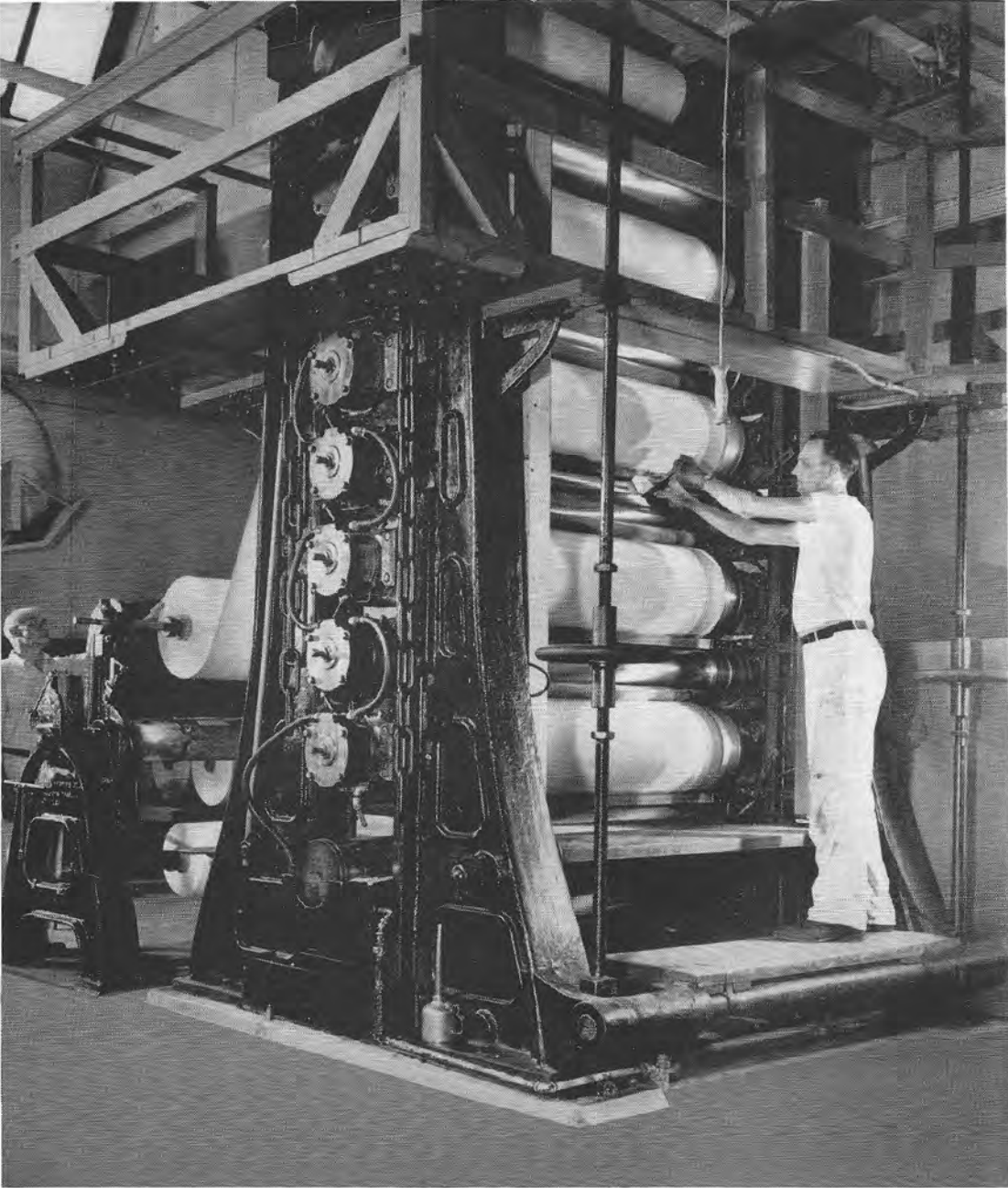
STUDIO PROOF
100 SHEETS 8 x 10 in. 100.3 x 25.4 cm.
F

Kodak DOUBLE WEIGHT
100 SHEETS 8 x 10 in. 100.3 x 25.4 cm.
OPAL
K

Kodak DOUBLE WEIGHT
100 SHEETS 8 x 10 in. 100.3 x 25.4 cm.
PLATINO
G-1

ILLUSTRATORS' AZO
100 SHEETS 8 x 10 in. 100.3 x 25.4 cm.
DOUBLE WEIGHT **E-3**

TINTS, TEXTURES, TONES, WEIGHTS—FOR EVERY TYPE OF SUBJECT



Calendering baryta-coated paper to smooth the surface is extremely important.

Kodak

Photographic Papers

WITHIN recent years, Kodak's superb line of photographic papers for the professional has been greatly expanded. Currently, there are sixteen different brands, supplied in a variety of stock tints, textures, sheens, and contrasts totaling 156. This completeness provides you an unexcelled opportunity to select the exact paper you need for any professional requirement.

So, no matter for what purpose you deliver prints—as a portrait, commercial, news, police, or scientific photographer—among the papers described herein you will find those best suited to the subject and the intended purpose.

KODAK CONTACT PAPERS

Kodak Athena Paper is a contact printing paper of portrait quality, producing prints of moderate warmth, brilliance, and fine gradation. It is supplied only in double weight but in three degrees of contrast. Athena tones beautifully to a brown or sepia color in either Kodak Gold Toner T-21 or Kodak Selenium Toner.

Kodak Velox Paper is a fast contact printing paper particularly suited to photofinishing because of its wide latitude and cold blue-black tone. This tone is universal throughout all six degrees of contrast.

Kodak Azo Paper is a widely used contact printing paper for commercial and photofinishing work. Its six contrast grades suit negatives of widely differing contrast ranges. Prints made on Azo have a cold tone. For brown tones, Azo can be toned in Kodak Hypo-Alum Toner T-1a or Kodak Brown Toner.

Kodak Illustrators' Azo Paper is a contact printing paper of moderate warmth designed primarily for the requirements of the illustrator and the commercial photographer. Its surfaces are available in both single and double weight and in several degrees of contrast. Illustrators' Azo tones well in Kodak Brown Toner.

STOCK TINT TEXTURE BRILLIANCE	A White Smooth Lustre (folding stock)	B Cream White Smooth Lustre	C Cream White Smooth Matte	E White Fine Grained Lustre	F White Smooth Glossy	G Cream White Fine Grained Lustre	H Cream White Fine Grained Matte
-------------------------------------	---	--------------------------------------	-------------------------------------	--------------------------------------	--------------------------------	--	---

KODAK CONTACT PAPERS

Athena moderately warm tone		B DW 2				G DW 1,2,3	
Velox cold blue-black tone					F SW 0,1,2,3,4,5		
Azo cold tone				E SW & DW 0,1,2,3,4,5	F SW 0,1,2,3,4,5 F DW 0,1,2,3,4		
Illustrators' Azo moderately warm tone				E SW & DW 1,2,3	F SW 0,1,2,3,4 F DW 1,2,3		
Aristo						G DW 1,2,3	
Ad-Type (folding stock) cold tone	A LW & SA 0,1,2,3,4,5						
Resisto cold tone							
Studio Proof (printing-out paper) red tone					F SW		

KODAK ENLARGING PAPERS

Opal warm tone		B DW	C DW			G DW	H DW
Platino moderately warm tone					F SW 1,2,3	G DW 1,2,3	
Illustrators' Special warm tone				E SW & DW			
Kodabromide cold tone	A LW 1,2,3,4,5 SA 2,3			E SW & DW 1,2,3,4,5	F SW & DW 1,2,3,4,5	G DW 1,2,3,4,5	
Royal Bromide cold tone					F SW 1,2,3,4 DW 1		
Velox Rapid cold tone					F SW 0,1,2,3,4		
Resisto Rapid cold tone							
Portrait Proof (developing-out paper) warm tone							

SW—Single Weight, DW—Double Weight, LW—Light Weight, SA—Light Weight Tough Stock

K Cream White Fine Grained High Lustre	L Cream White Rough Lustre	N White Smooth Lustre	P Old Ivory Fine Grained Lustre	R Cream White Tweed Lustre	S Old Ivory Tweed Lustre	V Cream White Suede Matte	W Old Ivory Suede Matte	Y Cream White Silk Lustre	Z Old Ivory Tapestry Lustre
								Y DW 1,2,3	
			P DW 2					Y DW 1,2,3	
		N SW 0,2,3,5							
		N SW							
K DW	L DW		P DW	R DW	S DW	V DW	W DW	Y DW	Z DW
			P DW 2,3					Y DW 1,2,3	
		N SW 1,2,3,4,5 N DW 1,2,3,4							
		N SW 1,2,3,4							
				R SW					

Kodak Photographic Papers
Available as of October 1, 1949

This table shows Kodak's greatly augmented line of photographic papers for every professional requirement . . . sixteen brands in all . . . in a variety of stock tints, textures, sheens, and contrasts totaling 156.

Kodak Aristo Paper is a contact printing paper of moderate warmth intended expressly for contact printing of portraits. It is available in three contrast grades, double weight, and tones attractively in Kodak Brown Toner.

Kodak Ad-Type Paper is a contact printing paper with the same speed as Azo. The emulsion is coated on smooth, lightweight white stock, which can be folded without cracking. Ad-Type is popular for folded greeting cards. It is supplied only in the "A" surface, in six degrees of contrast.

Kodak Resisto Paper is intended for jobs that require fast print service or moderately close size maintenance. It can be processed in about seven minutes. These features are due to a low-shrink, water-resistant paper base. Furnished in one surface and four degrees of contrast.

Kodak Studio Proof Paper is a smooth, single-weight gelatin printing-out paper for printing by sunlight or arc light. The depth of printing is judged by visual examination, and the reddish image is not permanent.

KODAK ENLARGING PAPERS

Kodak Opal Paper has warmth of tone and a long gradation scale which make it favored by portrait photographers. While not in the high-speed class, Opal has sufficient speed for enlarging with the usual projection printers and, with reduced illumination, can be used for contact printing. It is supplied in one degree of contrast—for normal negatives. For very warm tones, Opal can be toned in Kodak Gold Toner T-21, Kodak Selenium Toner, or Kodak Brown Toner.

Kodak Platino Paper is a moderately warm-toned, fast enlarging paper of superb quality. It is ideally suited to high production of outstanding prints since it requires less exposure than Opal and only a little more than Kodabromide. With reduced illumination it can be used for contact printing. Platino tones beautifully in Kodak Brown Toner. It is supplied in two degrees of contrast.

Kodak Illustrators' Special Paper has a full-scale, brilliant emulsion of Opal quality and speed, coated on a pure white stock. It is especially popular with commercial illustrators for reproduction purposes. It is supplied in one degree of contrast and only in the "E" surface, ideal for retouching and other artwork.

Kodabromide Paper is a fast enlarging paper of exceptional quality. It possesses remarkable exposure and development lati-



Baryta-coated paper is stored awaiting sensitizing. Handling of the 275-pound rolls is accomplished by specially designed electric trucks, to reduce hazard to personnel.

tude which materially reduces the percentage of discards. Its rich black tone is uniform through all five contrast grades and remains so over a wide range of processing conditions. Kodabromide is widely used for studio, commercial, press, photofinishing, and exhibition prints. Single weight "F" is excellent for news pictures and withstands the rough treatment of rush handling. Kodabromide can be toned brown in Kodak Sulfide Sepia Toner T-7a.

Kodak Royal Bromide Paper is an extremely high-speed enlarging paper supplied in four degrees of contrast. It is particularly suited to the quick-finish enlarging methods used in news-picture processing.

Kodak Velox Rapid Paper is designed for Velox Rapid Printer or similar optical printers. It is faster than Velox and enables the photofinisher to produce oversize prints of the same tone quality as Velox contact prints.

Kodak Resisto Rapid Paper, like Resisto, is intended for jobs that require fast print service or moderately close size maintenance. It can be processed completely in about seven minutes. Its speed of processing and moderately high dimensional stability are due to a low-shrink, water-resistant paper base. Resisto Rapid is available in four degrees of contrast.

Kodak Portrait Proof Paper is a medium-rough, single-weight developing-out paper slightly slower than Platino. It is intended for making proofs by contact with reduced illumination, or by projection. Its surface texture, which gives pleasing proofs with a minimum of retouching, has made this paper popular for finished work. Portrait Proof is widely used for photomurals.



Kodak Velox Unicontrast Paper, Rapid F, is for use by the photofinisher primarily with continuous printing and processing equipment. It is supplied in 1000-foot rolls, 2¾, 3, 3¼, and 3½ inches wide, straight or deckle edge, in the "F" surface only. It is also available in 500- and 5000-sheet packages, straight or deckle edge, and die-cut in the proper shape for the Kodak Album Print Folder. Sizes are 3 x 3½, 3¼ x 4½, 3½ x 3½, 3½ x 5, 3½ x 5¾.

Kodak Translite Sheet Film. This film is coated on both sides with an emulsion similar to that used for Kodak Platino Paper. It is flat-lying, translucent, and capable of producing extremely brilliant results. It is especially useful for making advertising and display transparencies which will last longer and be more satisfactory than the usual paper prints. It yields beautiful transparencies when colored with Kodak Transparent Oil Colors.

*Packaged
Perfection...*

Saves you time

Saves you worry

*Just mix with water for
developers which are
Always the Same
... Always Right*

Kodak Dektol Developer is an ideal all-around developer bringing out the best inherent qualities of your printing papers. It has excellent keeping qualities with practically no sludge or discoloration from use. Container to make 5 gallons of stock solution, \$3.00 list.

Kodak Selectol Developer yields delightfully medium-warm prints when used with Kodak Opal and Platino Papers. It has the added advantage of great capacity and long life. Particularly recommended for prints which are to be toned. Container to make 5 gallons of stock solution, \$1.75 list.

Kodak Selectol Soft Developer is Kodak's newest—for the photographer who wants to make his prints warm and soft. Portraits processed with it cause comment wherever they're shown, either toned or untoned. Container to make 1 gallon of stock solution, \$.50 list.

EASTMAN KODAK COMPANY
Rochester 4, N. Y.

COMMERCIAL



DEVELOPER

PORTRAIT



DEVELOPER

SOFT PORTRAIT



DEVELOPER

*Available from
your regular dealer.*

Kodak
TRADE-MARK