

KODAKERY

A NEWSPAPER FOR THE MEN AND WOMEN OF EASTMAN KODAK COMPANY

Vol. 5, No. 5

Copyright by Eastman Kodak Company, Rochester, N. Y.

February 6, 1947

EK to Tell Ad Plans At Parley

Messages for 1947 Listed in Millions

Millions of Kodak messages will go to photo dealers, finishers and their customers in 1947.

This was revealed today as a new Kodak exhibit prepared to open at the 22nd Annual National Convention and Photographic Industry Trade Show in Cleveland on Monday, Feb. 10. This is the five-day convention sponsored by the Master Photo Dealers' and Finishers' Association.

Some to Fly

The Kodak plane is scheduled to fly to the show KO-ers unable to obtain Cleveland hotel accommodations. Flights are planned for Tuesday, Wednesday and Thursday mornings, return trips being made to Rochester each evening. Kodakers are expected to attend from KO, KP, CW and H-E. Company technical representatives and salesmen also are slated to attend, together with representatives from Kodak's branches.

Billboard Announcements

Largest Kodak show prepared by Advertising's Exhibit Section this year, it announces in billboard fashion that Kodak will back the dealers and finishers in their contacting the public—their customers—to the extent of many millions of messages in 1947.

Three continuous belts, rotating under the sign, will be filled with samples of Kodak advertisements appearing in magazines, trade papers, newspapers and house organs, together with window and

Microfilming Erases Kodak Storage Problem



Little Ones Out of Big Ones—When Kodak plants were faced with the big task of storing millions of clock cards covering people who were engaged in war work, Recordak took on the job and reduced it to a normal operation. At left, Christine Ingram feeds cards into Recordak machine and at right she gets new supply from piles in H-E Timekeeping Office. Assisting her is Margaret Zillioux of the same office. Transfer of the records to microfilm made storage possible in small filing cabinets in the various plants. Records must be retained for seven years.

counter displays, literature and scripts of Kodak's radio ads.

A panel will picture all the material concerning the National High School Photographic Awards, available to dealers and finishers.

There will be good news for the convention members at the photographic papers display. The shortage is believed to be over and it's expected there'll be plenty to meet demands in 1947, according to K. O. Richardson of KO Sensitized Goods Sales Dept. To prove it, Kodak papers will be on display in quantity.

A new model of a Kodak prod-
(Continued on Page 5)

EK to Introduce Durol, New Film Developer

Kodak Durol 7 and Kodak Durol 10, new film developers and replenishers to be exhibited for the first time at the National Convention and Photographic Industry Trade Show in Cleveland next week, will almost "do all" for the photofinishers.

The ready-to-use developers and replenishers are keyed to the characteristics of modern film emulsions and to the need for critically uniform developer performance. Easy to use, they require only mixing with water.

Difference between the two is that Durol 7 is adapted for use in 7-minute commercial photofinishing machines, while Durol 10 is geared for 10-minute machines.

Each developer has its own replenisher, adjustable by dilution to proper carry-out rate, doing away with separate machine and tank replenishers.

Yielding high-quality negatives, it utilizes the full emulsion speed of films, and results in remarkably low fog on negatives. Made to give less contrast than some developers, the negatives will print easier and faster, and give more pleasing pictures on normal-grade paper.

This new chemical also brings with it three freedoms—freedom from sludge, scum and scale, together with an anti-fungus agent.

Resistance to aerial oxidation has been increased, resulting in longer tank-storage life. As many

February Contest

What about those winter scenes and activities for KODAKERY's February Photographic Awards? Better send them in for there may be little left of winter after this month.

This is the first week of the February contest, so you'll have sufficient time. But, remember, there are only 28 days in this month. Don't wait too long before sending your entries.

Recordak Cuts Task On Records

Clock Cards Put On Microfilm Rolls

Recordak has cut down a major storage problem at Kodak to microfilm size.

The problem involved the millions of clock cards covering people engaged in work on war contracts during the more than five years that the Company was engaged in such production.

Government contracts specified that the clock card records used on war projects be retained for seven years after the war's end. Endless rows of filing cabinets were needed at Kodak plants to store the cards which had accumulated since 1940.

Recordak to the Rescue

Then the midget magic of Recordak microfilming stepped into the picture and the rows of cards began dissolving into microfilm dimensions. Complete and permanent records were made of the cards on 100-foot rolls of 16-mm. film.

Hawk-Eye alone had more than 1,500,000 clock cards, all of which are stored now in one filing cabinet—thanks to the magic of Recordak microfilming. Each roll was marked and filed in numerical sequence by department and date, making a simple and ready method of obtaining information when necessary in the H-E Timekeeping Dept.

Some idea of the saving gained at Kodak Park through the Recordak process may be gleaned from the fact that KP's entire time records from 1940—4,500,000 of them—now are stored in 72 cubic feet of space. To store the cards bearing the same data an area of 2800 cubic feet would be required.

Recordak has transformed into tiny pictorial records the huge piles of clock cards at the Park and now the microfilm is stored in two small cabinets in the Time Office for easy reference.

File '46 Tax Returns Early, U.S. Revenue Collector Urges

Although Mar. 15 is the deadline, Kodak men and women are urged by the Collector of Internal Revenue to complete and file their Federal Income Tax returns as soon as possible.

Every person whose 1946 gross income was \$500 or more must file a return, and the following instructions of the U.S. Treasury Department describe the three methods of making a return:

"1—Withholding Statement—You may use your Withholding Statement (Form W-2) as your return if your total income was less than \$5000, consisting wholly of wages shown on Withholding Statements or of such wages and not more than \$100 of other wages, dividends and interest. (This is the Withholding Statement recently enclosed with Company pay checks.)

"2—Short-Form Return—You may make a Short-Form Return on Form 1040 if your income was less than \$5000, by using the tax table on the form and tearing off pages 3 and 4. If your income was wholly from salaries, wages, dividends and interest, you need fill out only page 1. If you had other income you must also use page 2.

"3—Long-Form Return—You must make a Long-Form Return on Form 1040 if your income was \$5000 or more or if you claim deductions amounting to more than 10 per cent of your income. In either of these cases, you must

use page 3 instead of the tax table on page 4.

"If you use a Withholding Statement as your return, or make a Short-Form Return on Form 1040, your tax is figured from a tax table (you will find the table on page 5 of this issue) provided by law which automatically allows about 10 per cent of your total income for charitable contributions, interest, taxes, casualty losses, medical expenses and miscellaneous expenses. Therefore, if you use either of those methods of making a return you should not deduct any such expenses on your return. If you make a Long-Form Return on Form 1040 and your income is \$5000 or more, you may either take a standard deduction of \$500 for such expenses or claim them in detail, whichever is to your advantage."

Those who decide to itemize their deductions on page 3 of Form 1040 will be interested to know that the Collector's Office says no deduction will be allowed for U.S. taxes on furs, cosmetics, jewelry, telephone service, admissions, railroad tickets, and other similar federal taxes.



Here's Durol—John Faro operates machine which fills containers with Kodak Durol, the new film developer and replenisher, in the Powder and Solution Dept., Bldg. 18, at KP. Durol makes its bow Monday, Feb. 10, at Photographic Industry Show.

Comedy Night Scheduled for Feb. 11 By Kodak Park Foremen's Club



Funsters — Here are two of the top billed entertainers for the program of the Kodak Park Foremen's Club slated on Tuesday, Feb. 11. At left is "Professor Backwards," who makes a specialty of writing backwards, upside down and sideways. At right is Charles W. Summers, a dealer in hilarious hokum and stuff.

Camera Club Picks Judges For February Competition

Ken Williams, director of Eastman Kodak's Photographic Studio, Kodak Office; Jordan Ross, local photographer and salon critic, and Robert Chick, portrait and commercial expert, comprise the panel of judges for a February print competition. It will be held in conjunction with the Kodak Camera Club Monochrome Section's dinner meeting at the

Dutch Mill on Feb. 21.

Cash prizes and ribbons will be awarded to winners in beginners', advanced, and expert classes. Each entrant is permitted to submit four prints. A novel feature at the meeting will be an electric voting machine which will make the judges' results visible to all present. A public address "mike" also will be provided to catch the highlights of the discussion.

Those planning to attend are urged to obtain their tickets before the deadline on Feb. 18 at Camera Club headquarters.

To encourage versatility and promote fairness, a new system of classification will be inaugurated when the Color Section of the Kodak Camera Club holds its next meeting at the Dutch Mill on Feb. 17. A steak dinner, to be served at 6:30, will be followed by a color slide competition and criticism period. Each member will be allowed six slides, to be delivered at the Camera Club, Bldg. 4, by Feb. 13. Judges for the contest will be Henry Staehle, Bldg. 59; John Mulder, Bldg. 26, and Oscar Wiegell, Kodak Office.

3 Classes Established

Because judges in past competitions have found it increasingly difficult to choose between outstanding portraits and landscapes, it was decided to establish three classes, each of which will be honored with cash prizes and ribbons.

These are:

- Class A**—Still life (flowers, table tops, etc.)
- Class B**—Human interest (children, portraits, animals, etc.)
- Class C**—Landscapes and architecture (seascapes, scenic views)

Entrants are requested to mark their slides with name, title and classification, taking care to include the letters A, B or C.

In addition to the nine prize winners in the regular competition, the judges will select six more slides to be added to the group and judged for an additional cash prize of \$10, the best transparency of the 15 entered to be determined by means of an applause meter. Comments on all winning slides will be made by an advanced amateur color photographer.

Tickets, which must be obtained by Thursday, Feb. 13, are \$1.25 for members and \$1.50 for guests.

In what is described as a completely different type of program, Charles W. Summers will tickle the risibilities of Kodak Park Foremen's Club members at their meeting Tuesday evening, Feb. 11, in the State Street auditorium.

Billed as a purveyor of hilarious hokum, Summers has entertained audiences from coast to coast and will be making his first appearance in this city.

Setting the stage for what promises to be a comedy-packed evening is "Hap" Hazard, madcap aerialist, who does several remarkable balancing feats atop a high perch. A delightful contrast to these aerial acrobatics is offered in the mental gymnastics of the self-styled "dean of laughology," Jimmy Edmondson, better known in radio as "Professor Backwards."

Blackboard Whiz Kid

The agile professor mystifies his audience by writing on a blackboard upside down, backwards, and sideways such verbal mouthfuls as "heteropsychologically" and "antidisestablishmentarianism." He interlards this routine with clever gags and double talk, also delivered backwards. A return visit by the Malone Sisters, instrumentalists, also is billed.

Supplementing the program will be a travel film, "Weekend in Bermuda," done in color and released by American Airlines. Another short subject is "Wings Over Latin America." Ted Cox, program chairman, also is seeking pictures of the Army-Navy football game.

Vic Sweet and his orchestra, with Vic at the Novachord, will play popular melodies.

Photo Patter—

*Try Character Sequences!
They're Interesting---Fun*



Needling — You can have a barrel of fun if you take a series of sequence pictures, built around situations like this. They are still funnier if you file them in the photo album.

Do you have any actors in your family?

Perhaps there's one you haven't yet discovered. And here's a snapshot idea that will help you find out. Furthermore, it will provide interesting winter activity for your camera.

The idea is to make character sequences — just snapshots in a series—three, four, or half a dozen—showing your actor in some kind of situation.

For the best results, make these pictures close-ups — emphasizing your model's face and expression. Then you'll be able to tell your story in the most forceful manner. If your camera won't focus for big close-ups, don't let that worry you. Work as close to your subject as the lens will allow. Then plan to trim or crop the pictures when they are printed or enlarged.

What kind of sequences should you shoot? You might try something like the needle threading sequence pictured here. Or you might have your subject attack an obstinate walnut—first with a nutcracker (which obviously fails to work), then with a hammer, then perhaps with a mallet and chisel, or a sledge. As an ending show some sweet young thing opening it for him with just a tap.

These pictures, of course, should be mounted in your snapshot album in proper sequence. A clever title will help put the idea across—or, if you've thought of a clever title for such a sequence, you can work backwards and build a picture story around that. Good titles often suggest picture parodies on popular songs, advertising slogans, or current slang.

Toy puzzles—such as a wood-block puzzle or a metal link puzzle—are always good for an expressive sequence. And tricks of parlor magic are effective, too—especially when the trick runs completely haywire. In fact, you can build picture sequences of this type around almost anything — from comic strip characters to politics.

However, no matter how many brilliant ideas you may have, you won't get very far with them unless you get that camera of yours and start work while the idea is still fresh in your mind. If you outline a few of these story-telling sequences, you'll find you can probably make the whole set in just a few hours. Try it. It's fun.

sometimes spends \$50,000 for food on one shopping trip.

"Wallets," they add, "are completely useless, and everyone carries wads of thousand-dollar bills."

Buddie, Can You Spare \$100? That's Beggars' Chant in China

"Pardon me, sir," the Chinese begged in flawless English, "but could you possibly spare a hundred dollars?"

"Yes, this is China," write Larry and Marjorie Parker Wales from Shanghai where Larry is assistant to Kodak branch manager.

"China," they state, "is where \$100 is worth less than a nickel; where rice, the nation's staple, is so expensive that we foreigners don't buy it."

The couple, both Kodakers of long standing, sailed for China last July. Larry was at Kodak Panama during the war and spent the spring of 1946 in KO's Export Dept., and Margie was at KO prior to their marriage in 1941.

"After years of waiting for a pleasure cruise on a transpacific luxury liner, our boat trip was something to remember," they declare. "The U.S. General M. C. Meigs is a beautiful 20,000-ton two-stacker ship not yet converted for civilian travel. So we rode regular troop-transport style, Larry in a cabin with 18 passengers, while Margie had the deluxe model with only 12 roommates."

"From San Francisco we sailed to Vancouver, Canada, to pick up 1400 Japanese who were being re-

patriated. They rode down in the hold, but occasionally straggled up on our deck and were immediately chased downstairs."

"We took the northern route across the Pacific to Yokohama where 'we tossed the Japs overboard.'"

The trip was dismal, commented Larry, with the foghorn blowing night and day. They never did see the Aleutians for the fog.

Sailed Yellow Sea

From Japan they crossed the Yellow Sea and rode up the Yangtze and the Whangpoo to Shanghai.

Kodak Shanghai's office is slowly getting a semblance of organization after the war.

"After the five lean years, the Chinese photographic market is like a big dry sponge in which the complete production of Kodak Park for one week would be like one drop of water!"

"Shipments of film from the States are few and far between," continued Wales, "but the Kodak men all gladly give out good advice on what to do if you had a roll of film."

Shortage of Everything

"No more can you buy inexpensive silks, linens, curios and carved items. The Japs," they report, "kept Chinese industry at a minimum during the war, and there's a shortage of almost everything. The city's population increased from a pre-war two million to four million people, and this has caused a terrific housing shortage."

The Waleses are living in an apartment in the old French concession with Morley Reid. Morley returned to China from Kodak Rochester early in 1946.

Shopping is quite something there, according to Margie. With approximately 3350 Chinese dollars equal to one U.S. dollar, a loaf of bread costs hundreds of dollars in Chinese money, and a pound of butter comes to thousands. She



Larry and Margie Wales



(T. M. Reg. U.S. Pat. Office)

Test your knowledge with the questions below. Grade 10 for each question. If you score 60 you're "super"; 50—you are still remarkable; 40—not bad at all; 30—time to brush up!

(Answers on Page 4)

- What is the life of a No. 2 Photoflood Bulb?
 - Two hours
 - Six hours
 - Twelve hours
- An electrocardiogram is:
 - A chart made on photographic recording paper which shows, electrically, the action of the heart
 - An illuminated board which shows to spectators the play of cards in a bridge tournament
 - A new type of card game played by children who operate it by pressing buttons that turn on lights
- How can one take a good picture while facing the sun?
 - By loading the camera with solar film
 - By using a sun diffuser
 - By using a lens hood or shade to protect the lens from direct rays of the sun
- What is a foot-candle?
 - Unit of measurement for light
 - Method of lighting at the lower extremity of a photographic subject
 - The illumination from a candle one foot in diameter
- Who rolled the highest single game this season among Kodak bowlers?

John Weagley Bill Teerlinck
Tony Rittinger
- How is it possible to make freckles or other skin blemishes less prominent in a portrait?
 - By using Panchromatic Film
 - By using Orthochromatic Film
 - By using a bluish eliminator over the lens

110 KP Drivers Cited; 500,000 Miles of Safety



Safe Driver— Charles Ayres Jr., left, who has been operating vehicles at Kodak Park for 21 years, receives a safe driving certificate from E. L. Cook, superintendent of the Yard Dept. Ayres was among 110 KP drivers who received the certificates.

Safe driving certificates, issued as a token of appreciation by the Company, were awarded recently to 110 operators of vehicles at Kodak Park in recognition of their accident-free performance during the past year.

In announcing the awards, E. L. Cook, superintendent of the Yard Department, pointed out that some 116 vehicles of all types traveled more than 500,000 miles in 1946 without an accident. While the operating force actually consists of 118 men, 8 of these were not eligible for the honor since they have not as yet completed one year of service as drivers, Cook said.

The following, listed according to their driving records in the department, were recipients of the certificates:

21 Years—Charles Ayres Jr., Oscar Burnett, Otto Neubeiser, Charles Tarbox, Harry Marshall, William Kingston, George Appleton, Paul Dutton, Fred Musclove.

20 Years—John Skinner, Arthur Chamberlain, Donald May, William Leistman, Sidney Marshall, James Mitchell, Anthony Spahn, Roy Perkins, Norman Barber, Henry Weisner, Lawrence Meagher.

19 Years—Walter Wendt, Charles Yandow, Arthur Scorse, Charles Kinmond, Elmer Domke.

18 Years—Fred Grossman, Dean Copeland, Fred McGregor.

17 Years—Harvey Spross, Harry Zieres, William Moss, George Blank, Harold Croll, Peter Van Hanegem, Bert Schoonover, Floyd Williams, Frank Mattice, John Doble.

16 Years—Raymond Wilson, Laverne Gosman, Edward Granger, Arthur Toal, LeRoy Dunkle, Edward Thow, Harry Spring.

15 Years—Purcell Steele, Stanley Coe.

14 Years—Harold Flynn, John De Groote, Herman Vragel.

13 Years—John DeVelder, Walter Henchen.

12 Years—Joseph Pites, Sargent Newcome.

11 Years—Peter VerWulst, Frank Lyness, Lawrence Jopson, Clarence Newcome, T. Borden Johnston, Samborn Evans, Irving Hoak.

10 Years—Gena Warner.

9 Years—Daniel Coakley.

7 Years—John Corrigan, Roy Rosington, Clifford Woodams, Victor Wendt, Frank Hamman, Earl Conley.

6 Years—Clarence Wandersee, Leo Leonard, Charles Ras Jr.

5 Years—Nelson Spiegel, Robert Richards, Eric Barrett.

4 Years—Leslie Brydges, Roy Lindsey, Alvin Lake, J. Barrett McManus, F. Harold Brown, John Ras.

3 Years—Carl Ohlinger, Charles Porth, George Ford, Albert Marsh, Walter Maskell, Lon Karlton, Kendrick Montfort, David Terry, Cecil Palmateer.

2 Years—Cornelius Bushart, Emil Miel, Warren Fox, Ray Conley.

1 Year—Frederick Steffer, Richard Coe, Howard Chamberlain, Edward Boomsma, Roscoe Wolfe, Albert Quackenbush, George Tennant, Warren Rapp, John Groden, Francis Dunn, Brighton Clemons, Warren Crump, Joseph Glomboski, John Smith, Herbert Remming, John Weber.

Park Seeks Claimants for \$555 on Ideas

Checks for a total of \$555.50 on unclaimed and unsigned suggestions for the 13 periods of 1946 are awaiting claimants at Kodak Park.

If your number appears on the following list, please call at the Suggestion Office, Bldg. 2, for your check. The numbers represent unclaimed awards.

M47286, B541, B18659, B22907, C263, C660, C816, C1575, C7288, C8293, C11449, C11653, C11986, C12598, C12831, C12853, C14786, C16116, C18479, C18847, C19171, C19332, C20411, C20795, C20957, C21101, C22642, C22909, C23130, C23307, C23398, C24044, C24584, C24787, C24987, C25320, C25318, C25387, C25392, C25477, C25882, C25900, C26468, C26670, C26675, C27381, C28645, C28753, C28908, C28972, C29017, C29108, C29120, C29185, C29186, C29199, C29416, C29496, C30060, C30236, C30280, C30715, C31107, C31708, C31725, C32128, C32460, C32594, C32709, C32780, C34068, C34774, C34874, C35154, C35160, C35456, C35879, C36345, C37002, C37317, C37905, C38171, C38312, C38585, C40194, C40248, C40694, C40914, C41060, C41234, C41338, C41532, C41765, C41991, C42047, C43194, C44523.

5 at KP Join 25-Year Folks

Five persons will complete 25 years of service with the Company this month.

They are Raymond F. Quirk, Research Laboratories; Nellie Perry, Paper Mill; Harold W. Crouch, Dept. of Mfg. Experiments; Marion S. Hull, Acetate Sheet Film, and John T. McMaster, Baryta.

Homer Mumby Dies

Homer H. Mumby, Chemical Plant Lab, died suddenly Thursday, Jan. 30.

He joined the Park in 1915, starting in the Emulsion Coating Dept., and transferred to the Chemical Plant in 1925. A son, Alvin, is in the Emulsion Coating Dept.

Army Doctor: "What is the first thing you would do if you got hydrophobia?"

Rookie: "Bite the Captain."



Number 99— Agnes Nevin, left, and Mary Ackroyd of the Industrial Relations Dept. at KP are shown opening the door of Bldg. 99 which recently was added to Park operations as a conference center. It formerly was a terminal point for the RTC.

Bldg. 99 Added to Park As New Conference Center

Minus any fanfare, Bldg. 99 recently was added to the Park's operations.

The low brick structure, located opposite the main entrance to the plant, has been a familiar landmark in Lake Avenue for many years. At one time it served as a terminal point of the city streetcar system. With the advent of motor buses, the site was abandoned and remained unoccupied until Kodak purchased the building and adjoining property. The latter now is used as a parking lot for Kodak Park people.

Transferred to the new quarters at the present time is the Military

Records Office, formerly in Bldg. 2, as well as several members of the Industrial Relations Dept. staff. Most of the space has been converted into rooms to be used for supervisory conference meetings and the projection of informational films. An oil heating plant has been installed and workmen have been completing the task of re-landscaping the area surrounding the building.

The choice of number 99 for the new unit was explained by a Company spokesman as being in keeping with a policy of allocating numbers from 1 to 100 for all Kodak Park East buildings.

It's in the Park: Winter Social Season in Full Sway... Hundreds Attend Parties and Dinners

You might say that the New Year is somewhat in doubt, judging from this belated but fetching pose of little Karen April Burns. The nine-month-old "glamour gal" is the great-granddaughter of Bill Fry of the Roll Coating Dept. . . . Enjoying the Jaycees' recent ski trip to Old Forge in the Adirondacks were "Dottie" Marsh, Bldg. 14; Evelyn Marsh and Lillie Fuller, Bldg. 25, and Merlynn Cook, Medical Dept. . . . After an absence of 16 months because of illness, Jerry Avery has returned to the Roll Coating Dept. . . . A bridal shower for Bertha Hammond was held at the home of Lorraine Ewing by girls of the Paper Service Dept. . . . Bill Sears, Bldg. 120, who recently moved into a newly-purchased house in Greece, is still one of the Rochester Royals cage team's most rabid rooters. Bill and his wife have missed only two home games in the last two seasons. . . . Lawrence Allen, X-ray Dept., left Jan. 17 for Arizona. . . . Double birthdays were celebrated in the Cafeteria, Bldg. 28, on Jan. 22 by Isabel Cady and Joan Zietse. . . . And speaking of anniversaries, Adelbert Blood, Acid Plant, celebrated his 65th birthday on Jan. 24. Members of the department surprised him with a cake, complete with candles, during the lunch period. . . . A recent patient in St. Mary's Hospital was William Mattern, Ciné Dept., Bldg. 58.



Karen April Burns

A farewell party for Vera Aab, who has left the Machine Shop Office to enter Grinnell College, was held at Midvale Country Club on Jan. 23. Ed Albrecht outdid himself as master of ceremonies while Jack Walsh made a gift presentation to the honored guest. Music was furnished by Tom Lyons, Vincent Carroll and Charles Loveland. Serving on the committee in charge of the party were Herb Hanse, Janet Fox and Catherine Sullivan. . . . Bert Allen, 16-mm., in ill health for the last six months, has been undergoing a thorough physical check-up in Highland Hospital. . . . Clemens Stark, Roll Coating Development Division, has been elected to the board of directors of Huntington Hills Inc. . . . A bridal shower for Gertrude Sherman, Emulsion Research, Bldg. 3, was held at the home of Gertrude Hart on Jan. 24. Gertrude (Sherman), a KODAKERY correspondent in her department, will make her future home in Syracuse. . . . Martin Walsh, Carpenter Shop, is recuperating at his home from injuries suffered in an automobile

accident which occurred Jan. 18. Some of his associates, who recently paid him a visit, report that he will soon be back on the job. Martin's son, Jack, is a member of the Machine Shop.

Eunice Attridge, Engineering, Bldg. 23, has been added to the KODAKERY correspondents' staff and will be assisted by Ethel Curtis, Dorothy Gross, Dorothy Fey, Jean West, Betty Braggins, Elizabeth Smith and Mary O'Brien. . . . "The Pay-Off," an informal publication covering "news and views of the Time Office," Bldg. 2, made its appearance recently. The editorial staff includes Don Garman, Jim Levis, Eunice Sehm, Rita Shaw, Vivian Ver Crouse and Doris Whitbeck. . . . Girls of the Industrial Relations Dept. entertained Betty Maynard at the Pine Tree Inn on Jan. 23. Betty has left the Company to return to her home in Wellsboro, Pa. Birthday greetings to Jane Bliss and Lovenna Corbett also were extended at the party. Anna Pearce handled the arrangements. . . . Frank Corrigan, Wage Standards, Bldg. 12, is recovering after an operation. . . . Bride-elect Rita Davis, Time Office, who will be married in the Pro-Cathedral of the Sacred Heart on Feb. 8, was feted by her colleagues at a dinner party at Lin Far's on Jan. 30. . . . Ed Hartman, Bldg. 6, and Wayne Wall, Wage Administration, are back after spending some time at the Chicago Processing Station. . . . Robert Sherwood, Industrial Laboratory, has returned to the Park after an absence of several weeks. Bob underwent an operation at General Hospital recently.



Eunice Attridge



Loula Alden

Loula Alden is the new KODAKERY correspondent in the Emulsion Research Dept., Bldg. 3. . . . A sweet singing trio is that made up of Harold DeMallie, Al Denison and Al Smith, who recently entertained at a party given by members of the Ciné-Kodak Processing Dept. DeMallie's individual comedy act, a la Bob Hope, came in for a lot of extra praise. . . . An alarm clock shortage is the least of her worries now, says Emma Weis, Bldg. 5, whose husband recently presented her with a pair of singing canaries. . . . A strange hobby indeed is that of Bob Paige, Roll Coating, who raises white mice in his spare time. Bob hasn't found a practical outlet for his pets as yet but is open to offers from the Rockefeller Foundation. . . . Art Drew, Machine Shop, who retired Feb. 1, was guest of honor at a party Jan. 9 at the Pine Tree Inn. Jack Walsh was master of ceremonies and R. G. Wedel presented a gift. The festivities were arranged by a committee headed by Herb Hanse, aided by Bill Mitchell. . . . Those little bluish flowers which Lawrence Rowden, Printing Dept., exhibited during the warm spell last week came from his garden. They're violas, according to Larry.



Night of Fun for Ice Follies Fans—Members of EK recreation clubs and their wives or husbands—1187 strong—took

in the Ice Follies at Buffalo last week. Excursion trains carried 600 KPAA folks Saturday, after 587 CWRC, HEAA and KORC people had made the trip Thursday night. One

group in Kodak section is shown at right, above. At left is partial view of the crowd at Terrace Park Station following the performance ready for return trip to Rochester.

BOWLING STANDINGS

CW Friday Webber		W L
Portrait	36 27/Azo	33 30
Vltava	34 29/Illustrators	32 31
Velox	34 29/Aero	31 32
Kodalure	33 31/Translite	20 43
CW No. 1		W L
Duos	35 25/Juniors	30 30
Seniors	31 29/Retinas	29 31
Kodaflectors	31 29/Recomars	28 32
Vollendas	31 29/Tripods	25 35
CW Friday Avery		W L
Dept. 10	21 6/Cine Mach.	12 15
Access. Mach.	19 8/Recordaks	10 17
Airgraph	15 12/Duplex	9 18
Proj. Printers	14 13/Velox	8 19
CW Office		W L
Brownies	30 18/Retinas	24 24
Recomars	29 19/Bantams	21 27
Recordaks	26 22/Enlargers	19 29
Kodascopes	26 22/Cines	17 31
CW Wednesday Men		W L
Bantams	34 17/Vest Pockets	20 31
Vigilants	34 17/Synchros	22 29
Brownies	30 21/Enlargers	20 31
Kodaks	26 25/Kodamatics	19 32
CW Wednesday Girls		W L
Doublets	34 17/Twindars	25 26
Daks	34 17/Bimats	21 30
Supermatics	29 23/Diamatics	20 31
Dakums	25 26/Ektras	17 34
CW Supervisors		W L
Enlargers	41 22/Liftys	30 33
Kodascopes	38 25/Targets	30 33
Cine	38 25/Kodaks	30 33
Shutters	38 25/Bantams	29 34
Monitors	38 25/Magazines	28 35
Vest Pockets	37 26/Brownies	26 37
Juniors	37 26/Six-16	25 38
Medalists	33 30/Vigilants	25 38
Six-20	33 30/Ektras	22 41
Bullets	31 32/Recordaks	21 42
KP Film Emulsion		W L
P.M. Group	30 21/K. C. Office	29 31
Doctors	35 25/K. C. Control	25 35
Melt. Office	34 26/Control	25 35
F. E. Office	31 29/Finishing	22 38
H-E Men's Ridge		W L
Drafting	34 20/Rinky-Dinks	27 27
Ramblers	32 20/Supervisors	26 26
Grinders	31 23/Vig Wags	26 28
Elec. Shop	31 23/Purrets	26 28
Recordak	30 24/Mach. Shop	25 29
Pushovers	29 31/Dept. 24	25 29
Oilers	28 26/Recordak II	20 34
Hotshots	27 27/Dept. 41	19 35

KPAA Kodak West B-8		W L
Bldg. 203	39 15/Bldg. 204	29 25
Recovery	38 16/Syn. Chem.	23 31
Gel-Makers	33 21/Bldg. 117	16 38
F.D. 5	30 24/Bldg. 129	8 46
KPAA Thursday A		W L
P&S	36 18/Bldg. 29	27 27
Chemical	36 18/N.C.P.	27 27
Bldg. 42	35 19/Testing	26 28
F.D. 4	31 23/Sen. Pap. Pkg.	22 32
Yard	30 24/Cines	21 33
Kodacolor	29 25/Tool Room	19 35
Steel Fab.	29 25/Mach. Design	19 35
Sundries	27 27	
KPAA Friday B-8		W L
Bldg. 57	43 14/Wage Stds.	29 28
Port. Pan.	40 17/X-ray	22 35
Res. Lab	37 20/Bldg. 23	20 37
Micro Photo	32 25/EWO. 5050	5 52
Rochester Women's Industrial		W L
Kodak Park	41 16/Ritter	26 31
Hawk-Eye	35 22/Taylor	26 31
Bond	33 24/Stromberg	25 32
B & L	33 24/Amer. Ldry.	18 29
Roch. Prod.	32 25/Clapp	16 41

Bussy Bowls Big 644 Series

One of the best three-game totals of the current bowling season was shot by Clarence Bussy last week in the KP Roll Coating League. Aided by 236 and 219 games, Bussy posted a 644 series. In the same circuit Cliff Sadler had a 607 set.

While John Schilling's 257 solo and 695 series stole the spotlight, there were other outstanding marks crayed in the KPAA Thursday A League Jan. 30. Roy Nesbitt and Art Pero had 245 and 234 singletons, respectively. Other 600 series included Harold Servis' 631, Milt Dow's 629, Warren Stephens' 608 and Antonio Christopher's 606.

Picking four tough splits during the evening and striking out in all three games, Jack Bergan fashioned a formidable 605 series Jan. 28 in the KPAA Tuesday B loop. His third game—230—was his best.

George Esse, bowling with the Grinders in the H-E Ridge League, copped high single and series honors with a 601, including a 246.

By winning three games from the Supervisors last week, the Pushovers in the H-E Ridge League jumped from 14th to 6th place. In the same league, Drafting, with a 2790 three-game total, erased the high series mark for the season.

Kingpin twins in the KPAA A bowling wheel are Mike and Frank Falzone. The brothers Falzone are currently one-two in the league's individual average standings, Mike holding a 198-pin level while Frank boasts 194.

Films Asked For Germany

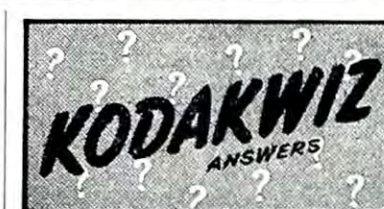
Motion pictures are expected to play a vital role in the re-education of the German people, and the U.S. Education Mission to Germany has recommended that additional supplies of motion-picture equipment and raw film stock be sent there.

"War and its aftermath destroyed more than 50 per cent of the films and picture equipment in Germany," according to Dr. William Zook, president of the American Council of Education, who headed the mission. "In view of the present abnormal shortages of instructional materials, types of visual aids, including films, assume more than their usual importance."

"The Germans are starved for information as to what has been going on in other parts of the world," he added, "and they rely on the motion picture for it."

Pin Honor Roll

MEN'S LEAGUES	
High Individual Single	
Tony Rittinger, H-E Dept. 29	289
John Weagley, H-E Dusty	280
Rog Ryan, H-E Webber	277
Ed Hendrickson, CW Guards	272
Larry Stavalone, H-E Dept. 29 Shift	268
Ed Behrndt, KP Film Emulsion	266
Bill Midavaine, KPAA Wed. B-8	266
Al Huber, KPAA Thurs. A	265
Mike Falzone, KPAA Thurs. A	259
Phil Perkins, CW Supervisors	259
Victor Scheid, KPAA Thurs. B	259
Harry Watt, KPAA Thurs. A	259
Bob Graffrath, H-E Webber	258
Clyde Cole, KPAA Tues. B	258
Lester Kuech, E&M	258
Gerry Roth, H-E Ridge	258
Ken Voellinger, KP Ridge	258
High Individual Series	
John Schilling, KPAA Thurs. A	695-683
John Barhite, KPAA Thurs. A	683
Dave Berry, KPAA Thurs. A	678
Al Huber, KPAA Thurs. A	673
Frank Smith, KPAA Friday B-8	670
Gerry Bagne, KPAA Thurs. B-16	669
High Team Single	
P&S, KPAA Thurs. A	1115-1069
Chemicals, KPAA Thurs. A	1073
Planning, H-E Webber	1067
High Team Series	
P&S, KPAA Thurs. A	3108-3003
Yard, KPAA Thurs. A	2970
WOMEN'S LEAGUES	
High Individual Single	
Louise Christopher, KP Dusties	241
Hazel Lemcke, KPAA 16-Team	232
Arlene Walters, CW Girls	224
Marion Ellis, KPAA 16-Team	224
Olive Head, KPAA 12-Team	223
Elsie Faas, KPAA 16-Team	214
High Individual Series	
Frances Blaes, CW Friday	584-561
Marion Ellis, KPAA 16-Team	565
Louise Christopher, KPAA 16-Team	551
Edith Kelley, KPAA 16-Team	545
Zoe Bickel, KPAA 16-Team	544
High Team Single	
Finished Film, KPAA 16-Team	879
Kodak Five, KPAA 16-Team	856
Box 2, KPAA 16-Team	850
Cine Proc., KPAA 16-Team	791
Cines, CW Friday	777
Reflex, CW Friday	773
High Team Series	
Finished Film, KPAA 16-Team	2442
Kodak Five, KPAA 16-Team	2430
Cines, CW Friday Girls	2263
Cine Proc., KPAA 16-Team	2217
Reflex, CW Friday	2217
Five Misses, H-E Girls' Ridge	2132



(Questions on Page 2)

1. A No. 2 Photoflood Bulb has a life of six hours. Since the bulb is turned on only while the picture is being taken, the bulb can be used over a much greater length of time for numerous pictures.
2. An electrocardiogram is a chart made on photographic recording paper which shows, electrically, the action of the heart.
3. You can obtain good pictures while facing the sun if a lens hood or shade is used to shield the lens from direct rays.
4. A foot-candle is a unit of measurement for light. It is the intensity of light thrown by a standard candle at the distance of one foot from a screen.
5. Tony Rittinger, while bowling with the Hobs in the Dept. 29 Shift League of Hawk-Eye, rolled a 289 game.
6. It is possible to make freckles or skin blemishes less prominent in a portrait by using Panchromatic Film. Orthochromatic Film emphasizes such things because it is not sensitive to red light, which they reflect.

Badminton Club To Buffalo Meet

At least a dozen members of the Kodak Badminton Club will compete in the Buffalo Athletic Club's international badminton tournament Feb. 7, 8 and 9.

Phil Michlin, H-E, who is chairman of the Buffalo tournament committee, along with Frank Comstock, another H-E player, advanced all the way to the finals in the Niagara Falls, Canada, Badminton Club's tournament last weekend before bowing out. The Kodak pair lost to Ray Young and Don Bechtel of Buffalo, 15-6, 14-18 and 15-12.

524 Series Tops EK Women Bowlers

Frances Laging had a 524 series, including a 203 solo, to pace Kodak women bowlers last week. The league leaders were:

High Individual Series	
Frances Laging, KPAA 16-Team	524
Gert Hess, KO Girls	462
Ruth Heim, H-E Girls' Ridge	452
High Individual Single	
Frances Laging, KPAA 16-Team	203
Mary Goy, KO Girls	190
Ruth Heim, H-E Girls' Ridge	167

Kodak Exhibit For Sportsmen Hits the Road

Kodak's sportsman exhibit, which opened last Saturday and runs through Feb. 9 at the New England Sportsman Show in Boston, will remain on the road until Apr. 15 to be displayed at similar shows in New York, Philadelphia, Cleveland and Minneapolis.

The exhibit, produced by Kodak's Advertising Exhibit Section in conjunction with the Sales Service Div., highlights what the hunter, fisherman and other sportsmen can do "round the clock" with motion-picture and still cameras. Three cases feature the variety of black-and-white and color pictures that can be made with miniature, roll and movie Kodaks.

Emphasis on Color

Giant 30-by-40-inch color transparencies are featured. The emphasis is definitely on color photography with a showing of color prints and small transparencies.

Among the Kodak personnel stationed at one or more of the five exhibits to answer questions about Kodak products will be Sales Service Div. members Bob McPherson, Ev Moses, Gene Johnson, Bob Waggershauser and Frank Wakeley. Kodak salesmen who will attend include Bob Perry, Harvard (Wilkie) Wilkinson, Bob Waldman, A. H. (Doc) Dockray, Ted Rohr, Harold Adams, J. W. Neely, John Karl, Jay Weller, Ray Troutner and Dean Hamley.

KODAKERY

Vol. 5, No. 5 February 6, 1947

T. M. Reg. U.S. Pat. Office
Published weekly at Rochester, N. Y.
with offices at 343 State Street
and printed at Kodak Park.

EDITOR		Phone
BOB LAWRENCE	- - - - -	4100
ASSOCIATE EDITORS		
ART WOOD	- - - - -	3207
WILMER A. BROWN	- - - - -	3216
DIVISION EDITORS		
IKKE SHYNOOK	- - - - -	
Kodak Park	- - - - -	6289
SIDNEY P. HINES	- - - - -	
Camera Works	- - - - -	334
JOHN CONNELL	- - - - -	
Hawk-Eye	- - - - -	305
KAYE M. LECHLEITNER	- - - - -	
Kodak Office	- - - - -	5128
ROAD SHOW EDITORS		
HORACE S. THOMAS	- - - - -	
Kodak Office	- - - - -	4132
DOROTHY E. CRAIG	- - - - -	
Kodak Office	- - - - -	4294
STAFF PHOTOGRAPHERS		
NORMAN ZEMPEL	- - - - -	3107
JIM PARK	- - - - -	3107
KODAKERY Correspondents are located in every shop, department, branch and store.		

What's Doing Around Town

At the Movies . . .

Loew's ROCHESTER—"The Chase," "The Return of Monte Cristo," "PALACE"—"The Razor's Edge," "TEMPLE"—"Windjammer," "Daniel Boone," "CENTURY"—"Cross My Heart," "REGENT"—"The Time, the Place, the Girl," "CAPITOL"—"It's a Wonderful Life," "The Verdict," "RIVIERA"—"I've Always Loved You," "My Pal Trigger," Feb. 6, 7, 8; "The Show-Off," "Two Smart People," Feb. 9, 10, 11; "Caesar and Cleopatra," Feb. 12, 13.

At the Theater . . .

EASTMAN—Nathan Milstein, violinist, Feb. 7; Pop Concert, Harrison conducting, Feb. 9; Georges Enesco, violinist, Feb. 13.

AUDITORIUM—"Blossom Time," Feb. 7, 8.

In Sports . . .

U of R—Alfred at Rochester, Feb. 8.

SPORTS ARENA—Rochester Royals vs. Ft. Wayne, Feb. 8.



Head New Division—Kenneth Williams, right, heads Kodak Advertising Dept.'s new Photographic Illustrations Div. George Waters and Pete Braal, at left front, are assistant managers of the division. The trio is examining a Kodak advertisement which will appear in national magazines beginning next week.

EK to Reveal '47 Ad Plans

(Continued from Page 1)

uct has been promised for the show's merchandise section, which will include still and motion-picture cameras and other photographic equipment. Sales Dept. members will staff this section.

To Outline Yule Program

Kodak's Christmas greeting card program for 1947 also is to be outlined in detail for the convention audience and the latest photofinishing equipment will occupy a prominent spot at the show.

The new negative developer, Durol, will be announced to the trade at the chemical section of Kodak's show. It is described in a separate story on page one.

Joe Allendorf, manager of Kodak's San Francisco Branch, has been invited to speak at the convention for the second consecutive year. His topic is listed as "The Answer Is 'Know.'"

To Talk to Managers

Will Peterson, Kodak technical representative, is to speak to plant managers at one of the opening conferences on equipment arrangement and maintenance of photofinishing equipment.

Demonstrations of the making of color prints by the Kodak Dye Transfer Process from Ektachrome and Kodachrome transparencies will be given at a separate booth, and the movie on Ektachrome Film

Williams Heads New Division In Advertising

Formation of a new Photographic Illustrations Division is announced this week by Kodak's Advertising Dept.

The new division is to have Kenneth W. Williams as its manager, Peter J. Braal as assistant manager in charge of studio operations, and George L. Waters Jr. as assistant manager in charge of picture procurement.

New Program Planned

Functions of this new division will include the operation of the present Advertising Studios and a new program of procurement and utilization of illustrative photographs.

Williams has headed the Advertising Studios for several years, Braal has been in charge of special surveys for the Advertising Dept., and Waters has been developing the plan for the picture procurement program.

will be projected continuously throughout the convention.

Five 30 by 40 color transparencies, made by Kodak, will greet convention guests as they enter the Cleveland Auditorium lobby.

The Advertising section booth will be a handy spot for all visitors for it will supply large envelopes to hold literature picked up at convention displays.

TEC Creates New Divisions, Koda and Teca

Tennessee Eastman has announced the creation of two new divisions—Koda and Teca—replacing the former Acetate Yarn Division.

Koda Division, headed by C. E. Bachelder with H. R. Childs as assistant, includes continuous filament spinning, twisting, winding, beaming, quality control, inspection and packing, shipping and stores, and acetate yarn development.

Teca Division, consisting of dope, Teca, and mechanical development for both Teca and Koda, is under the direction of E. G. Guenther as division superintendent.

Both of the new operating units will report directly to J. S. McLellan, general superintendent of plant operations.

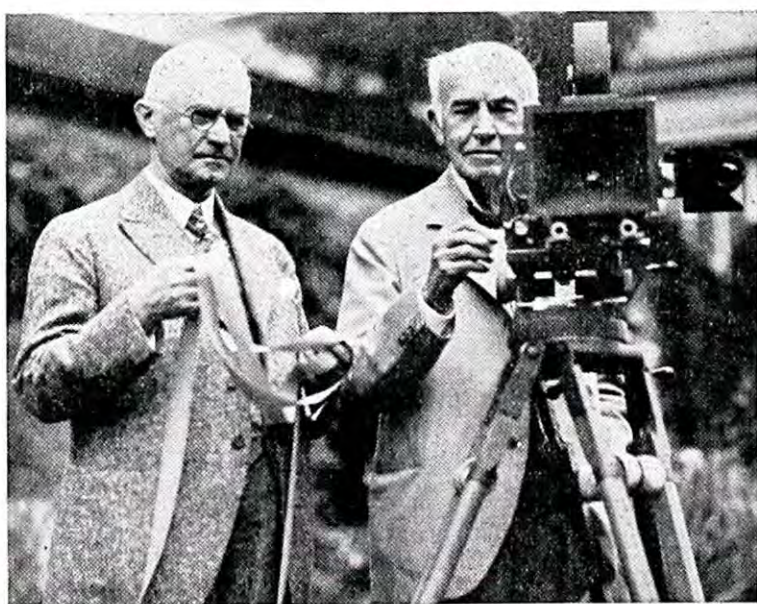


In Appreciation—Kodak recently received a scroll from the Chinese government conveying the personal thanks of Chiang Kai-shek for its part in training Chinese sent to the U.S. during the war. Above, Gen. Oscar Solbert, right, receives the scroll from Dr. V. K. Wellington Koo, in behalf of Thomas J. Hargrave, the Company's president.

Optional Tax Table Which May Be Used to Figure '46 Tax

If total income is—		And the number of exemptions is—				If total income is—		And the number of exemptions is—							
At least	But less than	1	2	3	4 or more	At least	But less than	Your tax is—							
		1	2	3	4			5	6						
\$0	\$550	\$0	\$0	\$0	\$0	\$2,225	\$2,250	\$288	\$193	\$98	\$3	\$0	\$0		
550	575	1	0	0	0	2,250	2,275	292	197	102	7	0	0		
575	600	5	0	0	0	2,275	2,300	296	201	106	11	0	0		
600	625	10	0	0	0	2,300	2,325	300	205	110	15	0	0		
625	650	14	0	0	0	2,325	2,350	305	210	115	20	0	0		
650	675	18	0	0	0	2,350	2,375	309	214	119	24	0	0		
675	700	23	0	0	0	2,375	2,400	313	218	123	28	0	0		
700	725	27	0	0	0	2,400	2,425	318	223	128	33	0	0		
725	750	31	0	0	0	2,425	2,450	322	227	132	37	0	0		
750	775	35	0	0	0	2,450	2,475	326	231	136	41	0	0		
775	800	40	0	0	0	2,475	2,500	330	235	140	45	0	0		
800	825	44	0	0	0	2,500	2,525	335	240	145	50	0	0		
825	850	48	0	0	0	2,525	2,550	339	244	149	54	0	0		
850	875	52	0	0	0	2,550	2,575	343	248	153	58	0	0		
875	900	57	0	0	0	2,575	2,600	347	252	157	62	0	0		
900	925	61	0	0	0	2,600	2,625	352	257	162	67	0	0		
925	950	65	0	0	0	2,625	2,650	356	261	166	71	0	0		
950	975	70	0	0	0	2,650	2,675	360	265	170	75	0	0		
975	1,000	74	0	0	0	2,675	2,700	365	270	175	80	0	0		
1,000	1,025	78	0	0	0	2,700	2,725	369	274	179	84	0	0		
1,025	1,050	82	0	0	0	2,725	2,750	373	278	183	88	0	0		
1,050	1,075	87	0	0	0	2,750	2,775	377	282	187	92	0	0		
1,075	1,100	91	0	0	0	2,775	2,800	382	287	192	97	2	0		
1,100	1,125	95	0	0	0	2,800	2,825	387	291	196	101	6	0		
1,125	1,150	100	5	0	0	2,825	2,850	391	295	200	105	10	0		
1,150	1,175	104	9	0	0	2,850	2,875	396	299	204	109	14	0		
1,175	1,200	108	13	0	0	2,875	2,900	401	304	209	114	19	0		
1,200	1,225	112	17	0	0	2,900	2,925	405	308	213	118	23	0		
1,225	1,250	117	22	0	0	2,925	2,950	410	312	217	122	27	0		
1,250	1,275	121	26	0	0	2,950	2,975	415	317	222	127	32	0		
1,275	1,300	125	30	0	0	2,975	3,000	419	321	226	131	36	0		
1,300	1,325	129	34	0	0	3,000	3,050	427	327	232	137	42	0		
1,325	1,350	134	39	0	0	3,050	3,100	436	336	241	146	51	0		
1,350	1,375	138	43	0	0	3,100	3,150	445	344	249	154	59	0		
1,375	1,400	142	47	0	0	3,150	3,200	455	353	258	163	68	0		
1,400	1,425	147	52	0	0	3,200	3,250	464	361	266	171	76	0		
1,425	1,450	151	56	0	0	3,250	3,300	474	370	275	180	85	0		
1,450	1,475	155	60	0	0	3,300	3,350	483	379	284	189	94	0		
1,475	1,500	159	64	0	0	3,350	3,400	492	388	292	197	102	7		
1,500	1,525	164	69	0	0	3,400	3,450	502	397	301	206	111	16		
1,525	1,550	168	73	0	0	3,450	3,500	511	407	309	214	119	24		
1,550	1,575	172	77	0	0	3,500	3,550	521	416	318	223	128	33		
1,575	1,600	176	81	0	0	3,550	3,600	530	425	326	231	136	41		
1,600	1,625	181	86	0	0	3,600	3,650	539	435	335	240	145	50		
1,625	1,650	185	90	0	0	3,650	3,700	549	444	343	248	153	58		
1,650	1,675	189	94	0	0	3,700	3,750	558	454	352	257	162	67		
1,675	1,700	194	99	4	0	3,750	3,800	568	463	361	266	171	76		
1,700	1,725	198	103	8	0	3,800	3,850	577	472	369	274	179	84		
1,725	1,750	202	107	12	0	3,850	3,900	586	482	378	283	188	93		
1,750	1,775	206	111	16	0	3,900	3,950	596	491	387	291	196	101		
1,775	1,800	211	116	21	0	3,950	4,000	605	501	396	300	205	110		
1,800	1,825	215	120	25	0	4,000	4,050	615	510	406	308	213	118		
1,825	1,850	219	124	29	0	4,050	4,100	624	520	415	317	222	127		
1,850	1,875	223	128	33	0	4,100	4,150	633	529	424	325	230	135		
1,875	1,900	228	133	38	0	4,150	4,200	643	538	434	334	239	144		
1,900	1,925	232	137	42	0	4,200	4,250	652	548	443	342	247	152		
1,925	1,950	236	141	46	0	4,250	4,300	662	557	453	351	256	161		
1,950	1,975	241	146	51	0	4,300	4,350	671	567	462	360	265	170		
1,975	2,000	245	150	55	0	4,350	4,400	680	576	471	368	273	178		
2,000	2,025	249	154	59	0	4,400	4,450	690	585	481	377	282	187		
2,025	2,050	253	158	63	0	4,450	4,500	699	595	490	386	290	195		
2,050	2,075	258	163	68	0	4,500	4,550	709	604	500	395	299	204		
2,075	2,100	262	167	72	0	4,550	4,600	718	614	509	405	307	212		
2,100	2,125	266	171	76	0	4,600	4,650	727	623	518	414	316	221		
2,125	2,150	271	176	81	0	4,650	4,700	737	632	528	423	324	229		
2,150	2,175	275	180	85	0	4,700	4,750	746	642	537	433	333	238		
2,175	2,200	279	184	89	0	4,750	4,800	756	651	547	442	342	247		
2,200	2,225	283	188	93	0	4,800	4,850	765	661	556	452	350	255		
						4,850	4,900	774	670	565	461	359	264		
						4,900	4,950	784	679	575	470	367	272		
						4,950	5,000	793	689	584	480	376	281		

Edison Centennial Observed



Centennial—The Centennial Anniversary of the birth of Thomas Alva Edison is being observed throughout the nation on Tuesday, Feb. 11. Thomas J. Hargrave, president of Kodak, is the Rochester representative on the National Centennial Committee which is headed by Henry Ford. George Eastman, founder of Kodak, and Mr. Edison were close friends. The above picture of the two men, whose inventive genius combined to make movies possible, was taken in 1928 when Mr. Edison was Mr. Eastman's guest.

The Market Place

KODAKERY ads are accepted on a first-come, first-served basis. Department correspondents in each Kodak division are supplied with ad blanks which, when your ad is typed or printed on them in 25 words or less, are put in the Company mail addressed to "KODAKERY," or handed in to your plant editor. All ads should be received by KODAKERY before 10 a.m., Tuesday, of the week preceding issue. HOME PHONE NUMBERS OR ADDRESSES MUST BE USED IN ADS. KODAKERY reserves the right to refuse ads and to limit the number of words used. Suggested types are: FOR SALE, FOR RENT, WANTED, WANTED TO RENT, LOST AND FOUND, SWAPS. KODAKERY READERS ARE ASKED TO PLACE ADS ONLY FOR THEMSELVES AND HOUSEHOLD—NOT FOR FRIENDS OR RELATIVES. TO DO THIS IS TO DENY SPACE TO THE PEOPLE OF KODAK FOR WHOM THIS SPACE IS RESERVED.

FOR SALE

ACCORDION—120-bass, Italo-American special model. 180 Child St., upstairs.
 ACCORDION—Hohner, 12-bass, case and instruction books, \$45. Also 1" Starrett micrometer, .0001 grad. \$6. 828 Flower City Pk.
 AIR COMPRESSOR—Twin cylinder without motor or tank, \$5. Also side-arm gas hot-water heater, \$3. 222 Avondale Rd.
 AUTOMATIC STOKER—Bin-fed, complete. Also boy's coat and cap for 5-year-old. Florence range oil burner. 62 Thorndyke Rd., Glen. 6415-M.
 AUTOMOBILE—1929 Ford Tudor. 74 Somerset St.
 AUTOMOBILE—1932 Willys. \$300. Glen. 6318-M.
 AUTOMOBILE—1933 Buick coupe. 583 Washington Ave.
 AUTOMOBILE—1933 Buick coach. 1744 Edgemere Dr.
 AUTOMOBILE—1934 Plymouth sedan. 177 Cherry Rd.
 AUTOMOBILE—1935 Ford, 4-door. 22 Sycamore St.
 AUTOMOBILE—1935 Oldsmobile sedan. \$325. 456 Lyell Ave., rear.
 AUTOMOBILE—1936 Chevrolet sedan. Willard Harndon, 791 N. Clinton Ave., upstairs.
 AUTOMOBILE—1936 Chevrolet, master sedan. Ed McKinney, 101 West Ave., Spencerport, phone 192-J.
 AUTOMOBILE—1936 Chrysler, 4 door sedan. St. 1017-R.
 AUTOMOBILE—1936 Dodge, 4-door. Gen. 2409-J.
 AUTOMOBILE—1936 Oldsmobile, 2-door. C. Warner, 195 Kenwood Ave.
 AUTOMOBILE—1936 Oldsmobile sedan. 314 Stonewood Ave., Char. 627-W.
 AUTOMOBILE—1936 Pontiac, 2 door sedan, \$300. St. 1625-J.
 AUTOMOBILE—1936 Studebaker. Also girl's ice skates, size 5. Cul. 1948-J.
 AUTOMOBILE—1936 Tudor sedan, \$500. Gen. 1069-R.
 AUTOMOBILE—1937 Chevrolet coupe. 801 Joseph Ave.
 AUTOMOBILE—1937 Chevrolet town sedan. 737 East Ave.
 AUTOMOBILE—1937 DeSoto. 130 Genesee St., Gen. 2535.
 AUTOMOBILE—1937 Dodge. Cul. 4633-W.
 AUTOMOBILE—1937 Ford coach, \$350. Char. 1126-R.
 AUTOMOBILE—1937 Hudson sedan. \$350. 30 Federal St., Cul. 5732-M.
 AUTOMOBILE—1937 Lafayette, 4-door sedan. 135 Merrimac St.
 AUTOMOBILE—1937 Oldsmobile, sedan. Gen. 146-W.
 AUTOMOBILE—1937 Packard, 6-cylinder, 4-door. 580 Jay St., upstairs, side door.
 AUTOMOBILE—1937 Plymouth, 2-door sedan. 39 O.K. Terr.
 AUTOMOBILE—1937 Plymouth, 4-door sedan. 419 Ridgeway Ave.
 AUTOMOBILE—1937 Pontiac sedan. 271 Conkey Ave.
 AUTOMOBILE—1937 Studebaker coupe. Also Arvin car heater and small oil heater. 114 Adelaide St.
 AUTOMOBILE—1937 Studebaker. \$375. Also car battery, \$12; 2-burner electric grill, \$5; rollaway cot, \$18; spray gun and hose, \$15. Char. 1029-M.
 AUTOMOBILE—1937 Terraplane, 2-door sedan. Also prewar boy's and girl's bicycles. 707 Norton St.
 AUTOMOBILE—1938 Plymouth, 2-door sedan. Also Corona typewriter. 56 Avenue A.
 AUTOMOBILE—1939 Lincoln Zephyr. 227 Fourth St.
 AUTOMOBILE—1939 Master de luxe 4-door sedan. 73 Kron St.
 AUTOMOBILE—1939 Plymouth coach. Char. 2096-J.
 AUTOMOBILE—1940 Ford club convertible. 87 Heberle Rd., Cul. 1623-M.
 AUTOMOBILE—1940 Ford, club convertible. Also breakfast booth, \$15; 22 caliber rifle, Marlin 8-shot, bolt action. \$10. 4 Chippendale Rd., Char. 285-M.
 AUTOMOBILE—1940 Pontiac coupe. 561 Elm Grove Rd., Glen. 5821-R.
 AUTOMOBILE—1940 Studebaker Commander sedan. Also man's dark blue suit, size 44-stout. 2100 Lake Ave., Glen. 6074.
 AUTOMOBILE—1941 Chevrolet truck, 1/2-ton panel. Also 1939 Packard, 4-door sedan. \$795. Cul. 6354.
 AUTOMOBILE—1941 Chevrolet sedan. Char. 661-R.
 AUTOMOBILE—1941 Chevrolet, special club coupe de luxe. Mon. 3757-M.
 AUTOMOBILE—1941 Chevrolet sport sedan. 1356 Norton St.
 AUTOMOBILE—1941 Buick, club coupe. Gen. 5639-R.
 AUTOMOBILE—1941 Hudson sedan. 4577 Culver Rd., Cul. 6338.

FOR SALE

AUTOMOBILE—1941 Pontiac sedan. \$1095. 1211 Park Ave., Apt. 1-B.
 AUTOMOBILE—1942 Buick, sedan. Joe, Main 1077-M.
 AUTOMOBILE—1942 Hudson six, 4-door sedan. Char. 969-M.
 AUTOMOBILE—1942 Nash, 4-door sedan. Gen. 2811-M.
 AUTOMOBILE—1946 Hudson coupe. Will consider older car as trade-in. Mon. 7186.
 AUTOMOBILE—Ford, model A. 14 Bradford St.
 AUTOMOBILE—Jordon, 4 door sedan. Also Remington Rand shaver. 270 Laburnum Cresc., Hill. 1187.
 AUTOMOBILE—Model A Ford coupe. Glen. 1529-W.
 BABY CARRIAGE—Folding. Hill. 1525-W.
 BABY CARRIAGE—Kroll. Also pair lady's prewar ice skates, size 6. 39 Bonesteel St.
 BABY COMFORTER—For crib. \$4. St. 741-L.
 BABY CRIB—Complete, large size, ivory enameled. Char. 245-M.
 BABY FURNITURE—Folding carriage; bathinette; nursery chair. Char. 1495-M.
 BABY STROLLERS—Two, metal. 308 Maiden Lane.
 BABY SWEATERS—Hand-crocheted and sweater sets made to order. Char. 1930-M.
 BASINETS—For twins. 532 Glide St., Gen. 2981-M.
 BATHINET—Storkline. Also Rock-A-Bye swing on metal standard. Glen. 5809-J.
 BATTERY—Willard. Also white porcelain apron sink, 30"x20"; furnace blower, thermostat; coal hot-water heater; gas hot-water heater and tank. Char. 1395-W.
 BEAGLES—Two 16 months old and two 2 months old. 171 Wellington Ave., Gen. 1128-M.
 BED—Double, oak, coil springs, matching bureau. \$12. Char. 491-R.
 BED—Single, metal, coil spring. Also pair goose-feather pillows. Glen. 413-W.
 BEDROOM SUITE—New, complete double bed, colonial maple, \$125. Spencerport 309-F-3.
 BEDROOM SUITE—18th Century, 3-pc., mahogany, new. 100 Bidwell Terr.
 BEDROOM SUITE—Waterfall, walnut. Gen. 7499-W.
 BEDSPREAD—Quilted, purple satin. Also boudoir chair. Gen. 2808-J.
 BICYCLE—Boy's, 28". Cul. 1615.
 BICYCLE—Boy's, Victory, 28". 46 Hoff St.
 BICYCLE—Girl's, 28". Also lady's black cloth coat, size 12, fox collar. Mon. 1990.
 BICYCLE—Girl's, 28". Also lady's red blazer, size 9; girl's green Chesterfield coat, size 12. 242 Rand St., Glen. 2748-W.
 BINOCULARS—Bausch & Lomb, 9x35, with case. Arthur Walther, RD 4, Canandaigua, phone 1316-M.
 BLOWER—Minneapolis Honeywell, 6 h.p., thermostat control. Also Bucket-A-Day stove. Char. 2816-J.
 BLOW TORCH—Two gallon. Also gas range, heat regulator and 24" hot-water radiator. Cul. 1911-J.
 BREAKFAST SET—Six-piece, maple, natural wood, \$60. 78 Orland Rd.
 BRIDESMAID'S GOWNS—One rose satin, size 14; 1 aqua satin, size 16, each complete with matching tias and elbow-length gloves. Also cello and case; 2-burner hot plate, \$5; and 35-mm. Univex Mercury camera, 3.5 lens, case, flashbulb attachment. 97 Nantucket Rd.
 BUILDING LOT—Large, level, 64'x164', corner Parkwood Rd. and Bernice St. \$650. Glen. 5179-M.
 CABINET HEATER—Montgomery Ward kerosene, 23"x23"x42", with flue piping. \$50. 3300 East Ave.
 CAMERA—Bell & Howell, 16-mm. Glen. 3170-W.
 CAMERA—35-mm., f/3.5 lens, carrying case, range finder, tripod, photoelectric exposure meter, portrait lenses. \$75. Mon. 1461-W.
 CAMERA—Brownie Reflex, \$7.50. Also 4-burner apartment gas stove, \$30; young man's overcoat, size 38. \$10. Mon. 3613-J.
 CAMERA—Kodak Vigilant 620. Cul. 4394-J.
 CAMERA—Leica, Model 3A with f/2 lens, 35-mm., carrying case, filters, lens shade. Hill. 2172-R.
 CAMERA—Leica, 35-mm., f/1.2 Summar lens, built-in range finder, green filter, lens guard, carrying case. St. 3831-L after 6.
 CAMERA—Miniature Foth Derby, f/2.5 lens, curtain shutter, 1/25 to 1/500 speed. Glen. 241-W.
 CAMERA—Univex 8-mm., and projector. \$60 for both. Spencerport 46-R.
 CAMERA—Wigen 35-mm., f/2.9 lens, 1/500 Compur shutter, carrying case, lens shade, adapter, 2 portrait lenses, 3 filters and rangefinder. Gen. 7075.

FOR SALE

CAR BATTERY—\$2. Also Ford model A clutch, \$2.50; Venetian blinds, 31" wide, \$2.50 each; toboggan, prewar, 8', \$15; electric train set, \$15. 768 Jefferson Ave.
 CAR DEFROSTER UNIT—Attaches to Chevrolet heater. Char. 1903-J.
 CAR HEATER—Complete with defroster unit and fan. \$12.50. Mon. 5826-W.
 CAR RADIO—For 1939 Chevrolet. Glen. 203-R.
 CARD TABLE—Also 2 metal chairs. \$5. Gen. 431.
 CHAIR—Barrel wing back, gold damask. Also brown fur jacket, size 14; lady's coat, squirrel collar. Char. 1201-R.
 CHEST AND DRESSER—\$25. Also 2 full-size metal beds, 1 coil spring, \$20; coffee table, \$4. Glen. 5925-J.
 CHILD CARE—In my home during day. 71 Augustine St., Glen. 347-J.
 CHILD CARE—Evenings and weekends. Nancy Moxon, Glen. 3170-W.
 CHILD CARE—In my home, age 2-4. Also lady's bicycle. Glen. 1973-M.
 CHILD CARE—Will care for children over 2 years old in my home by hour or day. 4359 Lake Ave., Char. 2289.
 CHIME CLOCK—Also Radiant heater; fireplace set; alarm clock; Red Cross heater; airplane motor; lady's brown shoes, size 6 1/2; and electric corn popper. Cul. 757-R.
 CLOTHING—Boy's sport jacket, size 26; Boy Scout shirt and pants, size 12; child's ice skates, size 1. 35 Parkdale Terr., Gen. 2659-M.
 CLOTHING—Boy's, teal blue Eton suit, size 5; blue tweed cloth topcoat and cap, size 6; black oxford, size 12 1/2 AA. 144 Wyndale Rd., Char. 2816-R.
 CLOTHING—Boy Scout uniform, with equipment, windbreakers, size 12 or 14; knickers, size 12. Also large scout tent; coat; sled; skis; developing outfit; walnut poster single bed. Glen. 5142-J.
 CLOTHING—Bridemaids dress, blue, size 16. Gen. 5051-M.
 CLOTHING—Cashmere wool dress, size 14; sweaters, size 38-44; young lady's suits, size 14-16. Main 5951-J.
 CLOTHING—Girl's, black coat, squirrel front, size 16; rose taffeta formal, size 16; shoes, size 7B. Char. 2406-M.
 CLOTHING—Girl's blue coat, size 10, \$10; navy blue reversible snowsuit, size 12. \$8. Char. 2147-M.
 CLOTHING—Lady's, 3 coats, black with Persian lamb collar, size 38; blue with fur collar, size 42; brown striped with fur collar, size 38. Glen. 3852-W.
 CLOTHING—Lady's black cloth coat, imitation Persian lamb, size 46; man's blue overcoat, size 42; several pairs of ice skates, sizes 1-6. 299 Winchester St., Glen. 6584-W.
 CLOTHING—Lady's, brown gabardine shoes, size 9 narrow, \$3; maternity dress, size 14-16, \$2.50, or will trade for baby crib. 460 Campbell St.
 CLOTHING—Lady's seal coat, black fox collar, size 16; seal jacket, size 14; cloth coat with badger collar, size 16; lady's ski boots, size 8; lady's skates, tubes, size 7. Also square top end tables. Mon. 7519-W.
 CLOTHING—Lady's dress, size 18; chenille robe, aqua, size 18. Also sled back-rest. 39 Briarcliff Rd., Greece.
 CLOTHING—Lady's wool coat, brown, fur collar, size 12-14; lady's brown; black Selby Arch shoes, size 7 1/2 AA; brown loafers, size 7 AA. Glen. 5306-M.
 CLOTHING—Lady's sweater, navy, size 42-44, \$2; man's regulation Navy pea coat, size 38-40, \$7. Also 2 ceiling fixtures, bronze, \$2 each. 513 Frost Ave., Gen. 4395-W.
 CLOTHING—Man's black Chesterfield, size 38, \$25; man's ski boots, size 7, \$3; lady's blue ski jacket, size 12-14, \$5. Hill. 3140-R.
 CLOTHING—Man's complete wardrobe, suits, size 48; shirts, size 16. Also mahogany dining room suite. 28 Lawton St.
 CLOTHING—Man's overcoat, size 38 short; man's Oxford gray suit, size 35-short; new buckle overshoes, size 9; two man's overcoats, black, sizes 38 and 40. Also regulation-size billiard table. St. 130-J.
 CLOTHING—Man's suit, 2 pair trousers, size 42; overcoat, size 44. Mon. 7524-R.
 CLOTHING—Man's topcoat, size 39; tuxedo coat, size 39; 3-piece oxford gray suit, size 40. Mon. 2122-W.
 CLOTHING—Wool dresses, size 14-16; sweaters; skirts. 1177 Lake Ave.
 COAL HEATER—Also gas stove, icebox. Mr. Archer, 44 Wyndham Rd.
 COAT—Chinese mink, size 18. \$100. 290 Broad St.
 COAT—Girl's, red, winter, size 11. Also 2 pairs ice skates, sizes 4 and 5; Easy washer. 198 Illinois St., Cul. 799-R.
 COAT—Lady's, black fitted, gray fur collar, size 16, \$25. Main 128.
 COAT—Lady's black wool, silver fox collar, matching hat, size 18. \$35. Mon. 3707-M.
 COAT—Lady's fitted, black Forstmann wool with mink collar, size 12. Also lady's brown riding boots, size 6 1/2. Hill. 2665-W.
 COAT—Lady's Harris tweed brown, fall, size 12-13. Glen. 1267-R.
 COAT—Lady's raccoon, size 16. Glen. 2943-W.
 COAT—Light tan Chesterfield, size 12. 101 Biltmore Dr.
 COAT—Lady's winter, Persian tweed, lynx collar, small size 14, \$35. Gen. 3960-J.
 COAT—Laskin mouton, size 12. \$150. Mon. 1595-M.
 COAT—Man's, black wool, size 44. Glen. 1219-M.
 COAT—Man's, size 42. Also man's hat, size 6 1/2; machinist's tools. 407 Magnolia St., Gen. 2377-W.

FOR SALE

COAT—Man's, size 44. 4182 Lake Ave., Char. 1929-J.
 COAT—Natural gray fox fur, size 11, 7/8-length. 435 Columbia Ave.
 COAT—Winter, size 14, teal-blue, genuine squirrel collar. \$35. Gen. 2386-J.
 COATS—Lady's, fur collars, sizes 36 to 40. \$10-\$25. 63 Edmonds St.
 COIL SPRING—Glen. 6950-W.
 COMBINATION DOOR—And hardware, 80 1/2"x31 1/2", \$7. Also 2 tires, 6.00x16, recapped. Glen. 2177-R.
 COMBINATION—Radio-record player, Philco table model, \$45. 217 Electric Ave.
 COMBINATION—Radio-victrola, 1941 Philco floor model, \$80. Gen. 833-R.
 COOLERATOR—50-lbs. \$20. 1596 Chili Ave., Gen. 1523.
 COOLERATOR—White enamel, 100-lbs. 610 Portland Ave.
 CRIB—Baby, blond, matching chiffon-robe. Or will trade for 8-mm. movie Kodak. Hill. 1806-M.
 CRIB—White, about 35" long. \$8. Hill. 1955-R.
 DAVENPORT—Blue frieze, \$125. Hill. 2397-J.
 DAVENPORT AND CHAIR—Rust color mohair frieze with wood trim. Also lady's dresses, size 12-14; girl's black spring coat, size 14. Char. 2515-J.
 DAVENPORT STUDIO COUCH—Blue. \$50. Glen. 7420-W.
 DESK—Boy's flat-top. Glen. 5599-R.
 DESK—Rolltop. Gen. 3785-J.
 DESKS—Office, 42" oak, 3 drawers, \$5; and spinet desk, \$10. Also pressure canner, \$5. Hill. 3168-W.
 DINING ROOM SUITE—Duncan Phyfe mahogany, 9-piece. 101 Parkview Terr., Stop, 48, Irondequoit.
 DINING ROOM SUITE—Modern, maple, 9 pieces. St. 2674-R.
 DINING ROOM SUITE—Nine-piece, mahogany. 325 Rutgers St., Apt. 8.
 DINING ROOM SUITE—Nine-piece, 5070 Ridge Rd. W.
 DINING ROOM SUITE—Nine pieces. Also Simmons bed with coil springs. Glen. 1809-W.
 DINING ROOM SUITE—Nine-piece mahogany. Main 2322.
 DINING ROOM SUITE—Nine-piece. Also Bendix washer. Gen. 421-R.
 DINING ROOM SUITE—Nine-piece, with table pads. Char. 811-J.
 DISHES—China. Also mahogany what-not stand. Glen. 4100.
 DOG—Doberman pinscher, male, red and rust, AKC registered. C. M. Elliott, 493 Trimmer Rd., Spencerport, phone 308-F-31.
 DOG—Irish setter, 2 1/2-year-old. 45 Marshall St.
 DOGS—Two beagles, fully trained, field bred. Cul. 1972-W.
 DRAPES—Brown figured, 64" long, 2 pair, \$5; rust, 43" long, 2 pair, \$4. Glen. 4826-M.
 DRILL—Combination drill, emery and buffer. \$10. 10 Velox St.
 DRILL—Electric, 1/4". Also girl's hockey skates, size 5; boy's hockey tubes, size 8. Cul. 2534.
 DUNCAN PHYFE TABLE—Drop-leaf. Also Universal 4-quart pressure cooker; cubic extension curtain rods. Glen. 6199-J.
 ENGAGEMENT RING—Diamond, size 6. 199 Eastman Ave., Glen. 2575-W.
 EVENING GOWN—White top, black tulle skirt, size 16; evening wrap, black velvet, size 16. Also 2 pink shag rugs; 3 pair pink print drapes; 2 pair beige print drapes. Glen. 4463-R.
 EVENING WRAP—Black velvet. Also blue strapless evening gown, size 10-12. Char. 439-W.
 FILE—Single drawer, steel, letter size. Glen. 2104-R.
 FISH TANK—Tropical, 14"x14"x33", with lighting hood and base. Char. 1086-R.
 FLASH GUN—Mendelsohn with solenoid, model E. 159 Johnson Rd., Glen. 3355-W.
 FORD MOTOR—Model A, converted for marine use, accessories. Also model A transmission, Baldridge reverse gear and Scripps, both engines 6 cylinder. 29 Alpha St., Char. 1540-M.
 FORMAL—White, with mits, size 13-14. Glen. 3790-W.
 FORMALS—Sizes 12 and 14, black-and-white, \$10 and \$7. 15 Hollywood St., Glen. 2998-R.
 FOX FUR—Silver. Also birdcage with stand. 77 Brooklea Dr.
 FRIGIDAIRE—248 Richard St., Mon. 4990-J.
 FRIGIDAIRE—4 cubic feet. Also Sun Ray white table-top gas range, oven control. 313 Roxborough Rd., Gen. 7057-M.
 FUR COAT—Alaskan seal, size 16. Gen. 1652-J.
 FUR COAT—Black Hudson Bay seal, size 16-18. \$15. Gen. 1859-J.
 FUR COAT—Black Hudson seal, size 18-20. 1317 Scottsville Rd.
 FUR COAT—Brown, size 14-16. \$40. Mon. 5801-R.
 FUR COAT—Gray coney, size 18. Char. 3005-W.
 FUR COAT—Gray kid, size 36. \$50. Also gas water heater and 30-gallon range boiler, \$15. 206 Alameda St., Glen. 2910-R.
 FUR COAT—Hudson seal, size 14. Glen. 3949-J.
 FUR COAT—Lady's black seal, size 16-18. Also several pairs of shoes, size 5 1/2 B and 7 AA. Glen. 6877-M.
 FUR COAT—Mink-dyed muskrat, size 16. Glen. 2211-M.
 FUR COAT—Mouton lamb, size 16. \$125. St. 5569-R.

FOR SALE

FUR COAT—Northern seal. Char. 1937-J.
 FUR COAT—Sable-dyed coney, light gray, size 18. Also 2 boy's plaid jackets; 2 pairs wool trousers, brown, size 16. 140 Winchester St., Glen. 1513-R.
 FUR COAT—Silver muskrat, small size. \$25. Mon. 4536-M.
 FUR JACKET—Black Hudson seal, size 18. 31 Probert St.
 FUR JACKET—Gray. \$50. 26 Owen St., Apt. 10.
 FURNACE—Williamson, 20", new series. Gen. 4640-M.
 FURNACES—Two. Also hot water heater. Main 5284.
 FURNITURE—Breakfast set, \$20; 9-piece dining set, \$20; single bed, maple, \$10; collapsible Hedstrom carriage and pad, \$25. 23 Glenora Dr., Glen. 5687-W.
 FURNITURE—Bathbub; kitchen sink; round oak table and 6 chairs; rocker; overstuffed chair; 11 rolls of roofing. Glen. 7441-J.
 FURNITURE—Bedroom set, 4-piece; kitchen set; refrigerator. Gen. 5531-R.
 FURNITURE—Bedroom suite, walnut, twin beds; walnut dresser, chiffonier, double bed; set of hand-painted dishes; 9'x12' rug with pad. 396 Brooks Ave.
 FURNITURE—Day bed; 1 single bed and full-size bed; mission wood buffet, table and chairs. Glen. 814-W.
 FURNITURE—Dining room suite; records and player; work bench and vise; sewing cabinet; rugs; dishes and linens. Glen. 885-J.
 FURNITURE—Icebox, 75-lb.; 5 odd tables; 3 small stands; 3 benches; wicker rocker; nantucket; 3-piece porch set; two 3 ladders; 4 ladder; wine press and grinder. 82 Alpha St., off Beach Ave.
 FURNITURE—Living room set; Duncan Phyfe dining room set; bedroom set; refrigerator; gas range; sewing machine; bicycles, boy's 2- and 3-wheel; kitchen set and typewriter. 30 Seabrook St., St. 2355-L.
 FURNITURE—Modern walnut veneered bed, complete, \$60; 3/4 bed; small icebox, \$5; 2 pairs curtains; fiesta dishes, service for 6. Also lady's diamond ring, 16-point. 198 Brayton Rd., Char. 1344-M.
 FURNITURE—Simmons studio couch; walnut dresser; lounge chair and ottoman; oak dinette set, table, 4 chairs with red leather seats; porcelain-top table and 4 chairs, \$10. Main 3138-J.
 FURNITURE—Three-piece modern living room suite; porcelain combination stove; Easy washing machine. 157 Weaver St.
 GASOLINE HEATER—Stewart-Warner. Mon. 2617-J.
 GOLF CLUBS—Man's, with bag. Glen. 7355-W.
 GOLF CLUBS—Man's left-handed, leather bag. Glen. 3739-M.
 GUITAR—Also case, \$30. St. 1474-X.
 GUN—Pump, No. 12 gauge, Browning. Or will trade for 12-gauge automatic. 223 Stony Pt. Rd., phone N. Chili 3-43-53.
 GUNS—Rifle, .22, 6-shot, \$20; 32-20 Savage, 6-shot with cleaning rod and cart-ridges; double-barrel shotgun, \$20; and Remington .22 rifle, 18-shot with scope, \$35. 170 Marlborough Rd., Gen. 4955.
 GUNS—12-gauge Ithaca feather-light, pump; 16-gauge Ithaca feather-light; Remington Gamemaster, 35-cal. Also 220 Swift cartridges, 35 Remington's, .22 long rifle Hollowpoints; 6 Tru Temper rods, reels. 147 Arnett Blvd.
 HAWAIIAN ELECTRIC GUITAR—Rick-ebacker. Cul. 5926-J.
 HAWAIIAN GUITAR—With case. \$8. 79 Chevalin St., off North St.
 HEARING AID—Zenith. \$10. 45 Gothic St., St. 3892.
 HEATER—Coal, 3 years old. \$60. St. 3636-J.
 HEATER—Penfield automatic hot water, with copper tank. Also Savage health motor vibrator for reducing. 34 Argyle St.
 HIGH CHAIR—204 Garford Rd., Irondequoit.
 HOT-WATER HEATER—Gen. 1674-J.
 HOT-WATER HEATER—Bucket-A-Day, side-arm gas, 30-gal. tank. St. 2597-J.
 HOUSEHOLD FURNISHINGS—Including piano and some antiques. 642 E. Main St., Main 4670.
 HOUSE TRAILER—28', 3-room with enclosed glass porch attached, 1946 model, located at Forest Lawn. Cul. 2055-W.
 HUNTING DOGS—Five weeks old. 522 McCall Rd.
 ICE SKATES—Boy's tubes, size 4 1/2, \$4. 262 Ridge Rd. W.
 ICE SKATES—Boy's, size 8 hockey. \$5. St. 4573-J.
 ICE SKATES—Boy's, hockey tubes, size 9, \$6. Cul. 1139-J.
 ICE SKATES—Boy's hockey, size 5, \$4; and girl's skates, size 6, \$3. Char. 2854-J.
 ICE SKATES—Boy's, size 6 1/2, \$3. Glen. 4401-W.
 ICE SKATES—Boy's, size 7, \$3. 1351 Winton Rd. N.
 ICE SKATES—Canadian tube hockey, hard toe, steel arch, used twice, size 11. 16 Rugroff St.
 ICE SKATES—Girl's, hockey tubes, size 8; boy's, size 9. Also girl's brown suede jacket; green whipcord jodhpurs, size 14. 70 Brentwood St.
 ICE SKATES—Girl's, size 7. Patricia Parke, 23 Lake View Pk.
 ICE SKATES—Hockey, size 5. Also pair high shoes, size 5. 461 Flower City Pk.
 ICE SKATES—Lady's, size 7. \$7. 140 Electric Ave., Glen. 5644-W.
 ICE SKATES—Man's, steel, size 11, \$4. 124 Clay Ave., Glen. 158-W.

(Continued on Page 7)

FOR SALE (Continued from Page 6)

ICE SKATES—On shoes, size 5, \$3. Also rubber military boots, size 7, \$2. Glen. 1265-W.

ICE SKATES—Racing tube, size 9 and 10, \$5 pair. 455 Hollenbeck St., upper.

ICE SKATES—Sonja Henie, size 6, \$5. Mon. 4471.

ICE SKATES—Two pairs, sizes 8 and 11. 845 Portland Ave.

ICE SKATES—Two pairs, girl's, white shoes, size 1-6. Also lady's silk jersey dress, melon color, size 20. 1509 Lake Ave., Apt. 2.

IRON—Automatic electric. Also Easy washing machine; 4½ cu. ft. Frigidaire. Mon. 8872-W.

IRON—Samson automatic. Glen. 5543-J.

KITTENS—Persians, 140 Winchester St., Glen. 1513-R.

LAMP—Rayo. Also milk glass dresser set; Parian figure under glass dome; crystal turquoise water bottle; pair blue-white cake plates; pair Japanese plates; colored glass. Char. 2246-W.

LAMPS—Floor and table. Also dining room fixture; oriental rug, 3'x5'8". Mon. 2417-R.

LIVING ROOM SET—Maple. Also maple tea table and footstool. Char. 1520-W.

LIVING ROOM SUITE—Mohair, 3-piece. 104 Duffern Dr., Greece.

LIVING ROOM SUITE—Three-piece. Glen. 3759-R.

LOG-AND-TREE SAW—Also buzz saw attachment; approximately 100 apple trees. 6 Oxbow Rd., Fairport, Box No. 5.

LOG LOADER—Lionel, signal control and crossing gate. Hill. 2459-R.

MARBLE—Hand-carved, table-top. Char. 1034-J.

MICROMETER SET—Lufkin inside, range 1½" to 32". 75 W. Main St., LeRoy, phone 420-M.

MIRROR—26"x66", with or without frame. \$15. Glen. 6789-J.

MOTOR BICYCLE—26". Main 2739.

MOTORBOAT—Inboard 27', Red Wing motor, 32 h.p. 4182 Lake Ave., Char. 1929-J.

MUFF PURSE—Medium size Persian lamb. Also black lynx collar; fireplace grate. Glen. 479-J.

OIL BURNING UNIT—Steam or hot water, gun-type burner and controls, 1400-foot radiation. \$275. Glen. 6930-J.

OIL DRUM—50-gallon. \$3. Glen. 3456-R.

OIL HEATER—Perfection, and Radiant heater, 715 Seward St., Glen. 3194-J.

ORGAN—Reed. Char. 193-W.

OVERCOAT—Man's double-breasted, size 38. Glen. 5117-M.

OUTBOARD MOTOR—5 h.p. Waterwitch, \$50. Also mandolin, \$5; girl's bicycle, sidewalk, \$10. Char. 2602-M.

PHONOGRAPH—Portable. Glen. 772-J.

PIANO—Baldwin-Sargent, baby grand. \$600. Char. 470-R.

PIANO—Upright, may be had by paying cartage. Mon. 5481.

PING-PONG TABLE—Regulation size, \$25. Glen. 4883-J.

PLAYPEN—\$3. St. 4165-L.

PLAYPEN—Also child's training chair. St. 2688-J.

POCKET WATCH—Man's Elgin, 17-Jewel. 156 Cooper Rd.

PUPPIES—Dobberman-poodle, 6 weeks old. Mon. 2870-W or Main 692-W.

PUPPIES—Irish setter crossed with collie, 4 weeks old. Mendon Rd., Rush.

PUPPIES—Pedigreed registered cocker spaniel. 86 Newton Rd., Glen. 2861-R.

PUPPIES—Police, black, tan and gray. Cul. 6012-R.

PUPPIES—Scottie. 4401 East Ave.

PUPPY—Collie, male, 3 months old. A.K.C. registered. Lima 85.

PUPPY—Male, German shepherd, 2½ months old. \$15. Also mother dog, age 3 years, \$10. Harry J. Dean, Redman Rd., Brockport, 829-F-21.

RABBITS—Gray Flemish giants. Char. 154-R.

RADIO—Atwater-Kent. Also 2 formal, pink and blue with matching blue hat, sizes 12-14; lady's tan pumps, size 6½-7; man's black overcoat, size 38-40, \$8. 158 Lake Ave., Char. 2577-J.

RADIO—Battery-electric, Emerson. Also iron bed and spring; small book cases; utility closet; small writing desk; child's desk; child's marble machine. Glen. 3556-M.

RADIO—Floor model. Also porcelain-top kitchen table. \$10. Emmett Durfee, 900 Dewey Ave.

RADIO—Majestic, floor model. Also victrola and records; 3-piece satin finish bedroom suite; 2 parrot cages. Char. 224-M.

RADIO—FM, push buttons. Also 14" fluorescent bed lamp. Mon. 8542-M.

RADIO—Floor model. Glen. 1606-R.

RADIO—Philco floor model, ivory finish. Mon. 3813.

RADIO—RCA Victor, 6 tubes. Main 588-M.

RADIO—Record player, 9-tube, floor model; electric record player. 236 Ridgedale Circle.

RADIO—Victor. \$30. St. 579-J.

RADIO—Zenith floor model. St. 5158-X.

RANGE—Bengal combination. Also kitchen cabinet and folding baby buggy. Cul. 5014-W.

RANGE—Coal. Andes. Hill. 1183-W.

RANGE—Combination. St. 1486-X.

RANGE—Combination, Kalamazoo. Gen. 7216-J.

RANGE—Electric, 4-burner with coal combination. \$60. Hill. 2315-J.

RANGE—Gas. Also 2 side-arm heaters, and hot-water tank, 30 gallon. 93 Kingston St.

RANGE—Norman, bungalow, combination, cream-and-green. Char. 853-W.

RANGE—Red Cross bungalow. Cul. 3807-W.

FOR SALE

RANGE—Westinghouse electric, four burners and oven. 217 Beach Ave., Char. 955-J.

REFRIGERATOR—7 cu. ft. Hill. 1868-M.

REFRIGERATOR—100-lb. top-icer. 183 Dorking Rd., Hill. 1128-J.

RIDING BOOTS—Man's, size 11D. Also riding pants, size 33. 19 Langham St.

RIFLE—8-mm. Mannlicher Haenel sporter type. Cul. 355-R.

RIFLE—22 Mossberg repeater, model 64-B, weaver scope attached, \$37. Main 1932-J.

RIFLE—Mossberg, 22 automatic, 2 boxes, 22 long rifle ammunition. \$20. Glen. 5306-M.

RIFLE—Winchester 32/20, lever action with 4X telescope. \$60. 53 Kansas St., Cul. 3974-R.

RING—Diamond engagement, yellow gold. Main 3334-M.

ROASTMASTER—Electric, complete with cabinet standard. Also birdcage. Glen. 183-W.

ROLLAWAY COT—Coil spring. \$5. Glen. 3000-W.

ROLLER SKATES—Chicago, man's, size 12. \$15. St. 4738.

ROLLS RAZOR—With traveling case. \$10. Glen. 1523-J.

RUG—Brussels medallion pattern, 9'x12'. \$10. 224 Lake Breeze Rd.

RUG—Rose twist 9'x14', with pad. Gen. 3679.

SHIRTS—Five white, size 15½-34. Also 2 print house dresses, size 40; 1/4.5 candid camera; water heater and 30-gal. tank. Cul. 523-R.

SHOES—Lady's. Also overshoes, rubbers, size 5 and 5½B. Char. 2456-J.

SHOES—Lady's, size 8AA, 7½AA and bedroom slippers, size 7AA. Char. 704-R.

SHOES—Two pairs, Red Cross, size 7-AAA. Char. 2258-W.

SHOTGUN—Savage automatic, full choke. Cul. 4640-M.

SINK—Enamel, 22"x37", double chrome faucets. 172 Fulton Ave., Glen. 64.

SINK—Wall type, reversible drain board, 2 faucets. \$5. Glen. 5656-J.

SKATE GRINDING—At 87 Eastman Ave.

SKI OR SNOW BOOTS—Size 5 or 5½. Also beaverette coat, size 12. 30 Desmond Rd.

SKIS—Hickory, 6'9", steel edges, cable bindings. Also lady's, ski boots, size 5. 663 Eaton Rd.

SKIS—Northland, 6'6", with clamps and poles. \$20. Also ski boots, size 7. \$10. Glen. 2919.

SKATES—Girl's, size 6. Also old sewing machine with motor. Glen. 6542-R.

SNOWSUIT—Girl's all-wool, forest green, size 14. Glen. 4252-R.

SNOWSUIT—Girl's, size 14. Also baby bottle sterilizer. Glen. 6641-J.

SNOWSUIT—Girl's, size 8-9-10. Also child's kitchen cabinet. Char. 2258-W.

SNOWSUIT—Toddler's, 1-piece, size 3. Also maternity dress, size 38-40. 111 Wyndham Rd., Char. 284-R.

SPANISH LESSONS—Complete set of 30 lessons on 15" records. \$10. Vachel Blair, Glen. 4359-R.

STORAGE SPACE—Will store piano for its use. Cul. 4632-R evenings.

STOVE—Combination coal and wood. Webster 220-F-4.

STOVE—Electric, 1943 General Electric, triple-oven Stratoliner, stored 2 years, includes \$50 worth of cable, box, plugs, etc. \$225. Gen. 3942-R.

STOVE—Norman gas range, 4-burner, table-top. Glen. 3903-W.

STOVE—Red Cross combination. \$10. Glen. 2211-J.

STOVE—Sterling combination. 532 Glide St., Gen. 2981-M.

STOVE—Sterling, coal-wood, with hot-water tank, attachments, \$15. Cul. 2236-M.

STOVE—Three-burner oil, portable oven. Glen. 7441-J.

STOVE—White table-top, oil and gas combination. Cul. 5389-J.

STUDIO COUCH—Bed combination. \$35. Also dining room suite, 9-piece walnut, \$150. 156 Bronson Ave.

STUDIO COUCH—Green, \$15. Also pure linen luncheon set for eight; blue-and-white chenille bedspread. Cul. 5381-W.

STUDIO COUCH—Simmons inner-spring. \$35. Gen. 5300-M.

STUDIO COUCH—Mon. 4471.

SUIT—Boy's. Also overcoat, size 10. Char. 2258-W.

SUIT—Lady's black-and-white check, 3 piece. \$60. 56 Parkwood Rd.

SUIT—Lady's green wool, black trim, size 15-16. \$20. Also pair French doors. Glen. 5537-M.

TABLE—Old, oval, tilt-top. Glen. 6676-J.

TABLE—Kitchen, white-porcelain top. Also base cabinet with porcelain top; 30-gal. hot-water tank, \$3. St. 2677-L.

TABLE—Kitchen, white-porcelain top, 25"x40", 4 matching white chairs. \$15. 406 Electric Ave.

TABLE—Kitchen, with 4 chairs. Also Silverstone floor model radio. \$45 for both or will sell separate. 985 Thomas Ave.

TABLECLOTH—And napkins, double damask Irish linen. \$20. Also lady's white shorty coat, size 12. \$10. 2389 Norton St., Cul. 6321-M.

TABLECLOTH—Lace, large size, Chinese handmade. \$18. Mon. 2042-M.

TANK—Extra heavy, hot-water, 30-gal., complete with gas heater coil. 25 Belvedere Dr.

TIRES—4 used, white side wall tires, 6.00x16, U.S. Royal de luxe. \$15. Glen. 3816-M.

TIRES—Four used, 1 new, 6.00x16. Char. 2490-M.

TEA SET—Antique silver, 4-piece. Hill. 1955-R.

FOR SALE

TOBOGGAN—8' and pad. \$20. Glen. 5466-M.

TOOLS—Standard machine screw taps, dies, reamers, die and tap holders. Also pattern makers and cabinet makers' tools. 214 Weaver St.

TRACTOR—Farmall, F-14 on roller, and double-bottom plow. \$650. Also saddle horse. 687 Gillette Rd.

TREES—Two blue spruce, 406 Clay Ave.

TUXEDO—Single breasted, size 36. Also gray tweed sport coat, size 32; lady's silver evening sandals, size 6½. St. 4738.

TYPEWRITER—Royal noiseless, \$60. Cul. 1266.

VACUUM CLEANER—Also hand cleaner. Char. 3032-J.

VACUUM CLEANER—Electrolux, \$15. Also man's blue sport coat, \$5, size 35. Char. 708-W.

VACUUM CLEANER—Electrolux, all attachments. \$20. Also baby playpen, guard gate, etc. 170 Wimbledon Rd., Glen. 5349-R.

VACUUM CLEANER—General Electric. \$20. Cul. 320-R.

VACUUM CLEANER—Sweeper. Also store ceiling fixtures; Juice-o-matic. Glen. 3461-J.

VELVET DRAPERIES—Two yards long, wine colored. Also girl's gabardine ski pants, navy. Glen. 5303-J.

VENETIAN BLINDS—Two, 42". Glen. 2437-J.

VICTROLA—Floor model; day bed; dining room table and 6 chairs; occasional table; Morris chair. 71 Mallory Dr.

WALL CASES—Three. Also 4 show cases. 471 N. Goodman St.

WASHER—Easy with spin dryer. Char. 2070-M.

WASHING MACHINE—Electric. 152 State St., Batavia.

WASHING MACHINE—Kenmore. Also gas stove; telephone stand and seat combination. Char. 2653-J.

WHEEL CHAIR—Adjustable back and foot rests. \$50. 142 Mallory Dr., Glen. 4986-M.

WRISTWATCH—Man's, 17-jewel Hamilton. Mon. 6571-R.

HOUSES FOR SALE

COTTAGE HOUSE—7-room, nice yard, newly painted. \$7000. 334 Avenue B.

DOUBLE—60 Forester St., hardwood floors, double garage, oil heat, extra lot for terrace, screens, storm windows, new roof. \$8000. \$38 monthly carries everything. St. 1031.

East-Main Culver section, 5/4 Boston, hardwood floors, separate furnaces, cellars, 2-car garage. \$6800. Cul. 2856-W.

FARM—72 acres, modern improvements. 369 Hill Rd., Parma, phone Hilton 70-F-12.

6-room, Koda Vista section, garage, available Feb. 15. Glen. 5665-J.

Eight-room, St. Paul Blvd. Char. 2458-R.

Plymouth-Flint section, 7-room single, near bus line. \$5000. Glen. 6641-R.

Ridge Road W., lot 87'x251', attached garage. Glen. 3444.

Single, 6-room, 4 lots, beautiful location, facing Durand-Eastman Pk., immediate occupancy. \$6000. Glen. 3170-W.

Mt. Hope Ave. section, double, converted from single, 4 rooms and bath up and down, immediate occupancy of lower flat. \$7900. Mon. 30-R.

Point Breeze, 3 bedrooms, laundry room, modern kitchen, double garage, insulated. \$5500. Also small cottage. 955 Bennington Dr.

Semi bungalow, 7½ rooms. 112 Minnesota St., off Main Street E.

Seven-room, modern conveniences, double lot. 27 Mill St., Ontario. Ont. 3671.

Eight rooms, newly decorated, easily converted into double, across from Hawk-Eye. Glen. 4040-W.

2447 Culver Rd., six rooms, new brick front and stucco construction, attached garage. Main 1881 or Main 8819.

Six-room, new roof, furnace, newly painted outside. Char. 3305-R.

St. Paul Blvd. section, 9 rooms, modern, all conveniences, shown by appointment. Char. 873-J.

Winona Boulevard, shingle and stone, 3 bedrooms, 2-car garage, oil air-conditioned heat, built 1940. \$18,900. Char. 2487.

17 Florentine Rd., 7 rooms, master bedroom, red brick veneer. Char. 1291-J.

250 Berlin St., 4-family, can be converted to 2-family, yearly income \$1100, price \$6600. 17 St. Casimir St.

275 Sagamore Dr., 4 bedrooms, den, oil heat. Char. 404-J, open Sunday afternoon.

777 Britton Rd., bungalow, 2 bedrooms, attached garage. \$10,500. Char. 899-R.

WANTED

AUTOMOBILE—1936-1940 coupe. Gen. 784-R.

AUTOMOBILE—Child's metal, suitable for 4-yr.-old. Gen. 7242-M.

BABY SCALES—Glen. 5644-W.

BOOKCASE—Large. Gen. 175-M.

CAMERA—Folding, for serviceman overseas. 28 Siebert Pl.

CAMERA—Kodak 35-mm. range finder model, with or without Kodaslide projector. Glen. 636-J.

CANOE—17' Old Town preferred. Gen. 5336.

CHEST OF DRAWERS—Don McKibben. KO ext. 3242.

DESK—Mahogany knee-hole type. Gen. 375-R.

DOLL CARRIAGE—Medium size. Write GSC, Box 2, Hulberton, N.Y.

WANTED

DRAFTING TOOL SET—St. 4791-X.

FILM PACK HOLDERS—2¼x3¼. Gen. 1069-R.

GAS ENGINE—2-6 h.p., air-cooled, motorcycle or stationary type. Hill. 1183-W.

ICE SKATES—Man's, size 12. Char. 1528-R.

ICE SKATES—Size 11, racing tubes. Gen. 469-R.

ICE SKATES—Size 7. Also toboggan or large sled; sleeping bag. St. 1960.

LAWN MOWER—Power. KODAKERY, Bldg. 28, KP.

NIGHT TABLE—Birds-eye maple. Char. 333-W.

OIL BURNER—To fit kitchen range. Glen. 1707-R.

PANTS—Boy Scout, size 34 or 36 waist. Hill. 2459-R.

PRESS—Used, dry-mount, will pay \$50. 198 Troup St.

RADIATOR AND GRILL—For 1936 Oldsmobile Eight. Gen. 4596-J.

RIDE—For 2 girls from Clifford and Goodman to CW and back, hours 7:30 to 4:30. CW KODAKERY.

RIDE—From Dewey at Glendale Park, to KP, 8 to 5 p.m. Glen. 2492.

RIDE—From KO to West Chili—Chili Ave. and Union St., at 5 p.m. Scottsville 16-F-12.

RIDE—From West Bergen to KP, hours 8-5. Charles Gilbert, Bergen 58-F-21.

RIDE—From 283 Beach Ave. to KP and return, 8 to 5 p.m. Char. 2218-W.

RIDE—From Williamson to KP, 8 to 5 p.m. Glen. 690-W.

RIDE—To and from Brockport and KO, hours 8-5. Glen. 2734-R between 6-8, reverse charges.

RIDE—To and from Camera Works, corner Lake Rd.-Baker Rd., Webster. Cul. 6175-R.

RIDE—To and from corner Bay and Rochester Roads, Webster, to KP, hours from 7 a.m. to 7 p.m.; 11 p.m. to 7 a.m.; and 3 p.m. to 11 p.m., one-week trips. Webster 148-F-5.

RIDE—To and from KP from corner of Elm Grove and Buffalo Roads, 8 to 5 p.m. 2924 Buffalo Rd.

RIDE—To and from KP from corner Hazelwood Terrace and Culver Road, 8 to 5 p.m. Jean Ward, Cul. 4265.

RIDE—To and from NOD, Winton Road and Main, or Barnum Street and Main, hours 8-5. Cul. 4178-R.

RIDER—Someone to share ride and expenses to New York City, on April 1. Jerry Creamer, St. 3565-L.

RIDERS—To and from CW, Stone Road and Dewey, 7:40-4:40. 671 Bonesteel St.

SEWING MACHINE—Treadle, Singer, preferred. 125 Winchester St.

TARGET PISTOL—.22-gauge preferred. Cul. 5707-M.

TOBOGGAN—7' or 8'. Glen. 848-J.

TYPEWRITER—Portable. Gen. 3271-J.

WASHING MACHINE—ABC spin dryer. Glen. 2873-W.

WOMAN—To do cleaning one day each week. Gen. 2938.

APARTMENTS WANTED TO RENT

By 2 Kodak dietitians, 2 or 3 rooms, furnished. Mon. 2427-W.

Desperate, must have home for 2½-yr.-old daughter, wife and myself, forced to move, has anyone a place around Ben Franklin High? St. 2817-L evenings.

Five or 6 rooms, flat or house, west side of city preferred, desperately needed. Glen. 1554-M.

Flat, 3-4 rooms, furnished or unfurnished, references. Mon. 1723-M.

Flat or house, family of 3, unfurnished, urgent. 680 Brown St., Gen. 7115-J.

Flat or house, 4-6 rooms, unfurnished, for H-E man and family of six who must vacate by Feb. 1. Cul. 5227-R.

Four or 5 rooms for man and wife and 2 children. Glen. 1075-R.

Four-5 rooms, or flat, for Kodak foreman and wife, both employed, rent \$50 or \$65, in city. Mon. 2361-J.

Four or 5 rooms, urgently needed by young couple, references. Glen. 432-J.

Four rooms, unfurnished, private bath, heated, references. Glen. 2672-J.

Furnished, for 3 employed adults. Glen. 4742-J.

Furnished, for couple who want to return there from honeymoon. Hill. 2837-J.

Furnished or unfurnished, or house by veteran and wife. St. 4852-J.

In or near Rochester, 3 or 4 rooms. Mon. 5831-R.

Or flat, 5 or 6 rooms, unfurnished. Thomas Muir, Glen. 6841-J.

Or flat, unfurnished, for veteran and bride, both working, east side of city preferred. Cul. 3636-M.

Please help us find a place to live so we may be married soon, both employed. Char. 519-W.

Three or more rooms, or flat or house, for young couple. Glen. 197-W.

Three rooms, furnished or not. 53 Scottsville Rd.

Three or 4 rooms, unfurnished for veteran, on or before April 1. Hill. 2543.

Three rooms, private bath, for working couple, references. Char. 1364-W after 6 p.m.

Three-4 rooms, unfurnished. Peggy, Char. 237-M between 5-7 p.m.

Three-4 rooms, furnished or not, by April 1, needed in order to get married. Cul. 5735-R or Gen. 3735-R.

Three-four rooms, unfurnished, before April 1, for young working couple. Mon. 4252-J.

Three-4 rooms, furnished, by April 20, for newly married couple. Gen. 7589-W.

APARTMENTS WANTED TO RENT

Three or 4 rooms, or year-around cottage by 2 ex-Marine office girls. Char. 720-W between 5:30 and 6 p.m.

Three or 4 rooms, unfurnished, for business couple, pay up to \$50 a month. Mon. 1068-W after 6 p.m.

Three-4 rooms, quiet, refined couple. Mrs. Wilson, Main 2791, ext. 95.

Three-four rooms, heated, vicinity Lake-Dewey for 2 adults, mother-daughter. Glen. 5212-M.

Three rooms if possible, unfurnished, for veteran and wife. Cul. 5758-M.

Two bedroom, half double or single house for couple with 1 child. Gen. 6307-R.

Two or 3 rooms, unfurnished, location immaterial, by veteran and wife, urgently needed. Webster 148-F-5.

Two-three rooms, furnished or not, or studio apartment, by April. St. 6904.

Two-three rooms, furnished or not, by veteran and bride-to-be. St. 4656 after 6 p.m.

Unfurnished, for employed couple, references. Gen. 6307-J after 6 p.m.

Unfurnished, house or flat, at least 2 bedrooms, for veteran, wife and child. Cul. 5183-R.

Unfurnished, 2 or more rooms, mother and daughter, both employed, quiet and refined. Cul. 2397-M.

Urgently needed by young couple. Glen. 1877, ext. 105, ring 3.

Urgently needed, for employed couple, both veterans, excellent references. Char. 522-M.

Veteran and wife need 3 or 4 rooms, urgent, both working. Glen. 7441-J.

FOR RENT

APARTMENT—Will share with woman. Glen. 3949-R after 6 p.m.

APARTMENT—Four-rooms and bath to person willing to buy furniture for \$2000. Mrs. Charles Phillips, 23 Market St., Brockport, N.Y., mornings and Sunday.

BOX STALLS—For two horses. Webster 217-F-22.

ROOM—For refined couple in private home near Lake-Dewey bus lines. Glen. 4367-J evenings.

ROOM—Front, to accommodate 3 men, garage, phone convenience. Gen. 4091-R.

ROOM—Front, with twin beds, gentleman preferred, \$6.50 each. Mrs. Davey, 143 Shepherd St., Mon. 2896-M.

ROOM—Furnished, prefer man. 47 Lauderdale Pk.

ROOM—Gentleman preferred, with breakfast. \$10. Mrs. Moore, 204 West High Terr., after 5 p.m.

ROOM—Large bedroom for 2 girls. 854 Portland Ave. after 5 p.m.

ROOM—Nicely furnished, suitable for 2. Glen. 4534-J.

ROOM—Seneca Park section, breakfast and garage optional. Glen. 4275-W.

ROOM—Stonewood-Lake section, girl preferred, eating privileges arranged, ride to and from H-E included. Char. 1352-W evenings.

ROOMS—Three, furnished or unfurnished at Nine Mile Point. Webster 227-F-12.

STUDIO APARTMENT—Completely furnished, private home, \$15. Cul. 203-R.

WANTED TO RENT

COTTAGE—Near Rochester for young working couple for months of July and August. Cul. 1429-J after 6 p.m.

COTTAGE—On Conesus Lake for two weeks in July. Gen. 5735-W.

HOUSE—Flat or apartment, 3 bedrooms. Cul. 3599-M.

HOUSE—Urgently needed by family of three, very reliable, will take care of property. Glen. 335-M.

ROOM—Girl giving up apartment to G. I. would like room with home privileges in KP section by Mar. 1. Char. 64-J between 6-7 p.m.

ROOMS—Three or 4 for middle-aged couple, both employed. 1533 Culver Rd., Cul. 1178-J.

ROOMS—Three or 4, furnished or unfurnished by veteran to be married in May. Glen. 4485-J.

ROOMS—Two, unfurnished, for couple with baby. Gen. 2901-M, Sundays.

SWAP

AUTOMOBILE—Plymouth tudor, 1935; For any 1938 model coupe and cash. Cul. 5559-W.

HOUSE—Large, 4-bedroom single, 17th Ward; For house in Town of Greece or 10th Ward. Main 2969-M.

LOST AND FOUND

FOUND—Several keys on ring near Bldg. 2, KP. Inquire KODAKERY, KP.

FOUND—Two black-headed rosaries. Inquire KODAKERY, KP.

FOUND—Two pairs of men's fur-lined gloves in KP. Inquire KODAKERY, KP.

LOST—Diamond ring on Jan. 15 in Bldg. 5 or vicinity, reward. Gen. 4888-R.

LOST—Diamond shaped silver ring in KO 9th or 4th floor washroom. M. Muir, 519 Lake Ave.

LOST—Lady's Crosby Swiss-make lapel watch, gold, in or around CW. Contact CW KODAKERY.

LOST—Pen. Sheaffer, brown with gold top. KO KODAKERY.

LOST—Single key, automobile, in or near KP recently. Return KODAKERY, KP.

Kaypees Down CW Quintet for Dusty Lead



Outnumbered — Kodak Park players really had Howie Long (No. 11) fenced in when this shot was made last Friday night during the crucial CW-KP Major Industrial League game. Surrounding the CW player are Ralph Taccone (arms outstretched) and A! McEntee, at left, and Harry Horn (foreground) and Jack Ellison, to the right in the picture. Kaypees won, 40-35, to remain unbeaten.

BOWLING STANDINGS

KO Repair Shop		W L	KO Girls		W L
Continental	30 24	28 26	Brownies	31 25	28 26
Cines	28 26	25 29	Bulls-Eyes	29 25	27 27
Inspection	28 26	23 31	Kodaks	28 26	25 29
KO American			Retinas	28 26	20 34
Stock	35 19	26 28	KO National		
Receiving	30 24	24 30	32 22	Indians	26 28
Shipping	28 26	24 30	31 23	Braves	26 28
Maint.	28 26	23 31	28 26	Cards	26 28
CW Saturday			28 26	Reds	25 29
Jiffys	40 26	32 34	27 27	Yanks	21 33
Recordaks	38 28	32 34	CW Friday Girls		
Kodascopes	36 30	31 35	42 21	Vigilants	32 31
Enlargers	35 31	31 35	41 22	Monitors	32 31
Monitors	35 31	29 37	39 24	Ektas	32 31
Hawk-Eyes	34 32	29 37	38 25	Hawk-Eyes	31 32
Bantams	33 33	27 39	37 26	Bullets	29 34
			36 27	Kodascopes	28 35
			36 27	Brownies	27 36
			33 30	Magazines	20 43
			33 30	Targets	17 46
			33 30	Medalists	12 51
			CW Engineering		
			34 20	Cines	26 28
			34 20	Shutters	25 29
			34 20	Monitors	19 35
			28 26	Ektas	16 37
			CW Guards		
			33 24	Bldg. 11	27 30
			33 24	Bldg. 12	26 31
			30 27	Bldg. 15	22 35
			H-E Webber		
			37 20	Shellers	29 28
			35 22	Planning	29 28
			34 23	Inst. Makers	28 29
			32 25	Purchasing	27 30
			30 27	Swiss Navy	24 33
			30 27	Assemblers	18 39
			29 28	Blockheads	15 42
			H-E Saturday Shift		
			44 16	Tool Room	28 32
			36 24	Tool Grinders	29 32
			35 25	Blanchards	25 35
			34 26	Shell Gang	25 35
			34 26	Inspectors	24 36
			33 27	Dept. 59	22 38
			30 30	High Speed	22 38
			H-E Girls' Ridge		
			37 17	Bulldozers	26 28
			36 18	Rolling Pins	24 30
			34 20	Zephyrs	22 32
			32 22	Rockettes	21 33
			28 26	Payrollers	21 33
			27 27	From 55	16 38
			KPAA Wednesday B-8		
			49 5	Wage Stds.	24 30
			33 21	Bldg. 42	20 34
			31 23	Film Dev.	18 36
			29 25	Ind. Eng.	12 42
			KP Bldg. 29 Maintenance		
			39 21	Eagles	30 30
			33 27	Jay Birds	27 33
			33 27	Hawks	25 35
			31 29	Larks	22 28
			KPAA Triceworkers		
			35 13	Bldg. 30	26 22
			33 15	Emul. Making	23 25
			33 15	Bldg. 57	19 29
			31 17	Bldg. 12	7 41
			28 20	Bldg. 50	6 42
			KPAA Girls' 16-Team		
			47 13	Printing	31 29
			44 16	Film Emul.	26 34
			36 24	Sensitometry	25 35
			35 25	Film Dev.	23 37
			34 26	Plate	23 37
			34 26	Box 1	21 39
			34 26	Bldg. 48	20 40
			33 27	Testing	14 46
			KPAA Girls' 12-Team		
			40 11	Indus. Rel.	22 29
			38 13	Accounting	22 29
			33 18	Stores	21 30
			32 19	F. E. Coating	20 31
			26 25	Bldg. 42	16 35
			25 26	Bldg. 30	11 40
			E&M Field Division		
			37 26	Electric	30 33
			35 28	Engineer	30 33
			35 28	Chemical	28 35
			33 30	Carpenter	24 39

Bldg. 23 '5' Wins 10th Straight

Bldg. 23 cagers registered their 10th consecutive triumph last week on the John Marshall floor, taking a pair of wins by decisive margins to move well ahead of the pack in the KPAA Departmental League.

After Jack Ellison, with 18 points, had paced the victors to a 49-35 verdict over the Emcos, "Gord" Anderson's charges returned the following night to drub the Research Laboratories quint, 52-33. Bill Tomkiewicz, Pete Fitzgerald and Danny Meagher were potent factors in the second victory, scoring 33 points among them, while the Labmen were held to 13 counters in the second stanza.

Treize Toss Settles It

Jim Curtin's Film Emulsion crew, beset by hard luck after leading the race earlier in the season, captured a hard-fought battle from Bldg. 12, 40-39, to hang on to the runner-up spot. Les Norton's adept foul-shooting in the closing minutes of the game kept Curtin's forces slightly in the lead, with Harry Treize tossing in a 2-point clincher from the floor. A thorn in the side of the winners all evening was the duo of George Horn and Ray Thomas, Bldg. 12, who tallied 12 and 11 points respectively.

Synthetic Chemistry, after dropping 8 straight games, broke into the win column last week as forward "Gerry" Rauber ran wild to score 22 points and loom large in his team's 36-28 conquest of a strong Bldg. 14 outfit. The Synthetics led at half-time, 17-8.

Engineers Gain Ground

The most notable advance of the week in the league standings was manufactured by the Engineering quint which fashioned a masterful 30-19 victory over the Emcos to jump from fifth to third place. Mack Finlan's 9 points proved to be the best effort of the low-scoring fracas, the Emcos being held to a meagre five-point first half. Joe Collings, the loop's outstanding scorer, notched 6 points to stay out in front of his rivals.

After leading 15-14 at the end of the first session, Power lived up to its name by finishing strong to trounce Bldg. 58, 31-24. Joe Rorick's 8 counters took scoring honors in the tussle. Standings:

	W L		W L
Bldg. 23	10 0	Bldg. 12	4 5
Film Emul.	8 2	Power	3 5
Engineering	7 4	Research Lab	2 7
Bldg. 14	5 4	Bldg. 58	2 7
Emcos	5 5	Syn. Chem.	1 8

Girls' Cage Race Ends in Deadlock

Supremacy in the KPAA Girls' Basketball League was to have been decided last night with a playoff game between Industrial Relations and Color-Box fives, winners in contests played last week on the Bldg. 28 floor.

Breaking a three-way deadlock for first place, Industrial Relations topped Bldg. 12 by a 25-17 count, while Color-Box snared a 17-10 decision over Stores.

Peg Wilson's 12 points and Hazel Luce's 8 accounted for most of the Industrial Relations attack, while Eleanor Witty netted 10 markers to maintain her consistent scoring record for Bldg. 12.

The closely-contested nightcap, which saw stellar defensive play by both teams, featured the meshwork of Helen Lutz, Color-Box, and Carolyn Smith, Stores, with 7 points apiece. Final standings:

	W L		W L
Ind. Rel.	6 3	Bldg. 12	5 4
Color-Box	6 3	Stores	1 8

(Additional Sports Page 4)

Horn Stars As KP Wins 4th in Row

Kodak Park took undisputed possession of first place in the Rochester Major Industrial League's National Division race last Friday night by tripping Camera Works, 40-35. It was the fourth win in as many outings for the Kaypees, and the first loss of the season for the Cameras. Nearly 1000 fans turned out for the CW "booster night" attraction.

The veteran Harry Horn and Ralph Taccone were the big guns in the Parkers' attack. Horn snared six fielders and dropped in five from the charity stall to lead the

NATIONAL	AMERICAN
Kodak Park 4 0	Graflex 4 0
Camera Works 3 2	Ritter 3 1
Balco 2 2	Buttons 3 1
Products 2 2	Hawk-Eye 2 3
Delco 2 3	Taylor 1 3
Justewriter 0 4	DuPont 0 5

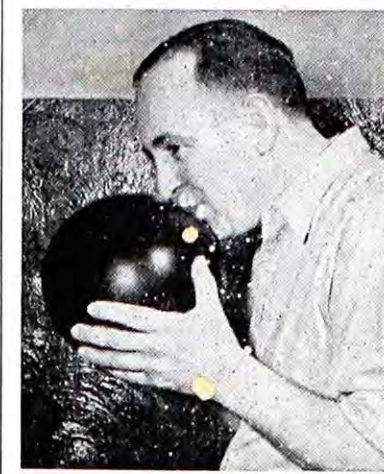
scorers with 17 points. Taccone, in addition to sinking four field goals, played a bangup game defensively.

Johnny Charcholla, playing his last game for Camera Works, garnered 6 points to retain the individual scoring lead in league competition for Kodakers.

Charcholla is returning to the University of Illinois where in 1942, prior to entering the Marine Corps, he starred in basketball and baseball.

On Feb. 3 Coach Bernie Messmer's boys dropped their second straight, bowing to Delco, 30-27. Hawk-Eye won its second in a row, trouncing DuPont, 47-36. The Hawks had denied the win column Jan. 29, beating Taylors, 41-27. Felix Soler scored 36 points in the two games. Leaders for four games:

	G	Fg	Ft	Tp
John Charcholla, CW	4	23	12	58
Jack Ellison, KP	4	22	9	53
Stan Lolek, KP	4	15	17	47
Bob Keegan, CW	4	13	13	39
Ed Malolepszy, CW	4	16	6	38
Harry Horn, KP	4	11	9	31



Happy Kegler — Tony Ritter, who rolled 289 game, highest of season to date, kisses the mineralite with which he turned the trick. Tony bowls in H-E Dept. 29 Shift League.

Schilling's 695 Tops Bowlers

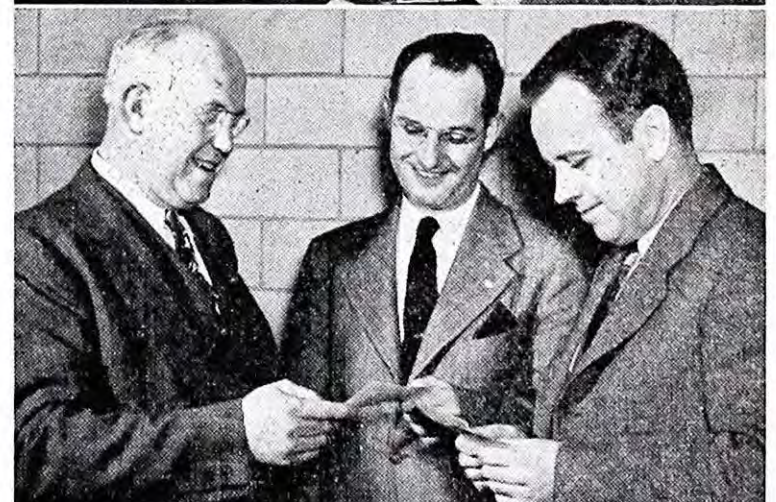
John Schilling turned in a sizzling 695 series last week in the KPAA Thursday A League, setting a new high three-game total. Previously Schilling and teammate John Barhite had posted 683's.

Last week's league leaders:

High Individual Series	
John Schilling, KPAA Thurs. A.	695
Clarence Bussy, KP Roll Coating	644
Jimmy Giesman, KO National	615
Cliff Haskell, KPAA Thurs. B.	614
John Schmid, KPAA Fri. B-8	609
Robert Ulrich, CW Supervisors	606
Jack Bergan, KPAA Tues. B.	605
George Esse, H-E Ridge	601

High Individual Single

John Schilling, KPAA Thurs. A.	257
Karl Naramore, KO American	246
George Esse, H-E Ridge	246
Robert Ulrich, CW Supervisors	243
Frank Donovan, KPAA Tues. B.	238
Clarence Bussy, KP Roll Coat.	236
John Murphy, KPAA Fri. B-8	234
Cliff Haskell, KPAA Thurs. B.	232
Jimmy Giesman, KO National	231
George Temnitz, KO Repair	228
Harold Benz, H-E Webber	224
Jack Armond, KPAA Wed. B-8	224
George Romanko, H-E Sat. Shift	221
Lester Kuech, E&M F.D.	213
Joe Smith, KP Bldg. 29 Maintenance	200



Tourney Winners — Winners of recent bowling tournaments at their awards. Above, C. K. Flint, EK vice-president and KP general manager, presents Henry Spindler, winner of KPAA Men's Singles Handicap, the Flint Trophy. M. F. Fillius, left, superintendent of Paper Service Dept., in which league Spindler bowls, looks on. In lower photo Jim Thompson, center, and Reg Farnham receive checks from Charley Kivell, left, CWRC president. Thompson won CWRC Lucky Strike Tournament and Farnham was runnerup.

SEC. 562 P. L. & R.
U. S. Postage
PAID
Permit 6
Rochester, N. Y.

KODAKERY
EASTMAN KODAK COMPANY
Rochester 4, N. Y.
Return Postage Guaranteed

KP