

CW, H-E Earn State Safety Awards

Hollywood Lab Begins Printing Kodachromes

Newly installed facilities have been put into operation at the Hollywood Processing Laboratory to process Kodachrome prints. This provides better service to EK dealers in far western states.

Reports from the lab at 1017 North Las Palmas Ave., Hollywood, 39, Calif., state that first shipments of finished work have been made. Meantime, progress is continuing on fitting the section of the lab so that the prints can be turned out in increasing quantities.

This project is part of the Company's over-all plan for expanding its Color Print Service. A similar service was set up at the Chicago Lab in the fall of 1945.

The new Hollywood department operates under the direct charge of Walter Bent of the Company Sales Dept., who was sent to the coast from Rochester to handle sales and service of the prints. The actual making of the prints is carried on by the laboratory staff under direction of B. J. Burns, laboratory manager.

Service for Dealers

Establishment of this new division of the Color Print Service makes it possible for Kodak dealers to send their Kodachrome print orders either to Hollywood or Chicago, depending upon which offers the dealer better parcel post service. Orders for Kodachrome prints in all sizes, including process-and-print Kodachrome orders, are now being accepted there.

To make room for the new machines, offices and staff required for the department addition, a new third floor was built on top of the Hollywood Laboratory last fall.

James Barry of the Ciné Processing Dept. and A. Van Wie of Color Control went to Hollywood, as did Al Krieger of the Color Print Service, to assist in setting up the new department. All three are from Kodak Park.

2 Plants Hear Good News on Safety Efforts



Lead in State—Bill Dermody, left, head of the H-E Safety Dept., and Joe Nighan, assistant safety supervisor of Camera Works, read the announcement that their respective plants have qualified for two special awards for outstanding safety records in New York State. Forty-three awards will be presented Mar. 12.

'Operation White Tower'

Mt. McKinley Expedition Schedules Tests Of Kodak Color Film on 20,300-Foot Peak

Special tests of Ektachrome and Kodacolor Aero Film will be made high on Mount McKinley this spring. Bradford Washburn, noted explorer and mountain climber, will supervise the tests of Kodak Film when he leads his expedition to the summit of Alaska's 20,300-foot mountain.

"Operation White Tower," as the expedition is named, will test Army equipment and bring back valuable scientific information on weather, glacier motion and cosmic rays.

A complete photographic record of the expedition's progress will be made in the two-month assault on

the highest peak in North America.

Washburn will conduct the experiments for the Kodak Research Laboratories on sheet Ektachrome and Kodacolor Aero. Purpose of the tests is to determine behavior of the film under unusual field conditions of the Arctic.

Dr. Walter Clark of the laboratories spent three months with the

5 Park Units Qualify For Honorable Mention; 100 Per Cent for KO

Two Kodak plants will receive special awards for outstanding safety records in New York State on Mar. 12.

Camera Works earned the award with the highest number of accident-free man-hours—1,505,392—in the 22nd Annual Statewide Accident Prevention Campaign of the Associated Industries.

Hawk-Eye Works receives a similar special trophy for 1,303,454 accident-free man-hours during the 13-week period in 1946.

H-E's Grand Award

A year ago Hawk-Eye won the grand award, a gold trophy presented by the Associated Industries, after rolling up a record of 1,940,129 man-hours worked without a single lost-time accident during the campaign conducted for 13 weeks in 1945.

There will be no presentation of the grand award this year. No industry, with more than a million man-hours worked, finished without a lost-time accident.

Other Kodak units will receive recognition for their accomplishments during the campaign. Kodak

Office will receive a 100 per cent certificate and trophy in its class.

Five Kodak Park units are to receive honors along with Distillation Products Inc. Finished Film and Sundries, Paper Packing Division, Film Emulsion Manufacturing Depts., Ciné Processing Division and the Service Division, all of Kodak Park, receive honorable mention certificates in their respective classes. DPI gets a 100 per cent certificate in its class.

EK Success Praised

Praise of the Company for its "splendid showing" in the campaign came in a letter to T. J. Hargrave, Kodak president, from William H. Roberts, chairman of the State Board of Standards and Appeals. Chairman Roberts, whose board is charged with preparation of codes to insure safety of workers, wrote, in part:

"It is an inspiration to members of this board to find so many large industries are making a determined effort to reduce what has been an appalling accident toll during the past years."

Col. Howard G. Hoffman, former governor of New Jersey, will be the principal speaker at the dinner Mar. 12 in the Chamber of Commerce when the awards are to be made. This annual Industrial Management Council dinner and rally will be attended by many EK people. Martin F. Hilfinger, Syracuse, president of the Associated Industries, will present 43 awards to the Rochester area firms.

Students in EK Families Eligible for Contest

Entry blanks in the National High School Photographic Awards are being snapped up by pupils, reports from many parts of the country indicate. Kodak sponsors the competition.

Students in the ninth to 12th grades and who are members of Kodak families are eligible for the Awards, along with others of the country. They may obtain entry blanks at their schools, from photographic dealers or from headquarters of the National High School Photographic Awards at 343 State St. Entries must be sent to the same address on or before May 15, 1947.

Cash awards will total \$3500 with a grand prize of \$500.

This Winter Put the 'Br' in Britain

Brrrrr. With one long shiver, Edward Peck (Ted) Curtis, Kodak vice-president, described his stay in England.

Ted, who returned last week aboard the Queen Elizabeth from a month of business in England and France, declared:

"I don't advise England in January as a pleasure trip. Of course, as far as I was concerned, it was just a temporary inconvenience. The British are really having to live with this coal shortage and extreme cold. For four days," he pointed out, "my hotel room was never above 45 degrees, and everyone wore coats and hats indoors."

"Our people at Kodak Ltd., as is true of the English in general, are facing up to the situation. At Harrow Works there isn't enough coal to keep running on anything like full production. It was about half shut down when I left. They hope to keep going at least partially by shutting down in sections."

The finishing departments, he continued, have operated all the

time, so at present the amount of sensitized goods reaching the market has not been cut, but it will be soon if the coal remains scarce.

Electricity throughout England has been shut off from 9 a.m. until 4 p.m. daily for domestic use and stores. Except for the running of most essential machinery, no electric power is available at any time for factories. Elevators were shut off entirely.

London did not receive much snow, but parts of England were buried under, he declared. The English usually don't have much snow and aren't equipped to fight it. Frozen pipes caused great trouble in London, added Curtis. There were 2000 breaks in the water system of the city, and in many houses the plumbing burst.

A better picture was presented in Paris, he continued. "You can buy anything you want in the restaurants provided you have enough francs. The coal shortage there is acute, too. Elevators aren't running, and we climbed five flights

(Continued on Page 4)



Edward P. Curtis

explorer in Alaska in 1938. He explained that Washburn made previous tests for Kodak when the Company developed black-and-white aero film before the war.

"A lot of practical knowledge of what our black-and-white aero film could do came from Washburn. Now he'll try out our newest color film on McKinley," Dr. Clark said.

Two Motion Pictures Planned

In a recent letter to the Kodak scientist, Washburn explained that two motion pictures of the ascent are planned—one in 16-mm. Kodachrome, one in 35-mm. black and white. Two professional cameramen will handle these assignments.

"The majority of the pictures will be taken below 15,000 feet, but we hope to be able to top off both pictures on the summit if the weather favors us in May," Washburn wrote.

He added that "by far the most dramatic part of the mountain lies between 7500 and 13,000 feet, a region that has been scarcely photographed at all."

One Woman in Party

Mrs. Washburn will accompany the expedition of 11 persons which will fly from Minneapolis to Anchorage late in March. They will establish a base at 6000 feet on Muldrow Glacier, near Wonder Lake in McKinley National Park.

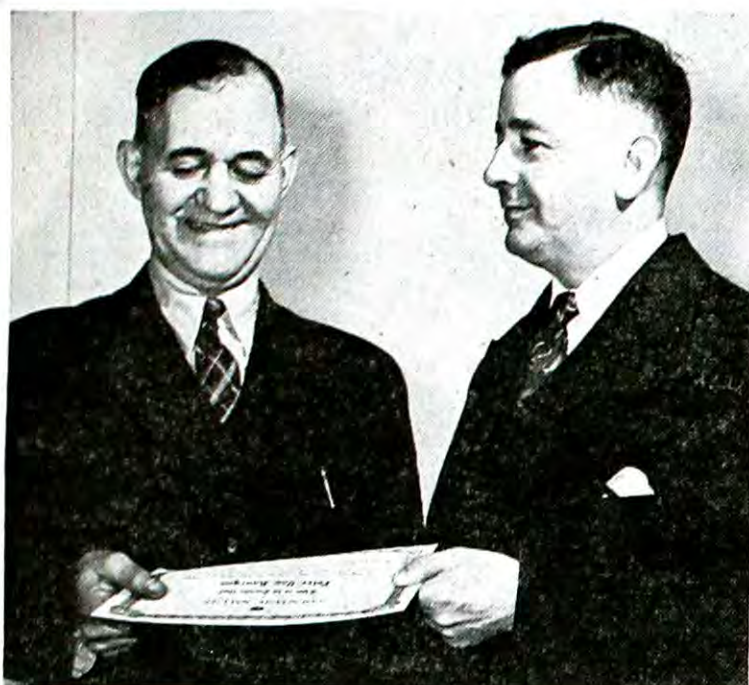
From there the group will go on foot, supported by dog teams and ski-equipped planes, to an advance 10,000-foot base on the head of the towering glacier.

Special instruments for survey work and high-altitude cosmic ray

and weather apparatus will be used. Much of this equipment is to be parachuted to the expedition by the Army Air Forces' Tenth Rescue Squadron at Anchorage, Alaska.

Surveys will be made to help translate high-altitude photographs now being taken by the AAF into more accurate aerial navigation charts. Such photographs recently have revealed large areas of unexplored terrain.

Pete Wins Plaudits of Public For Politeness to Pedestrians



Courtesy Salute—Pete Van Hanegem, left, driver of Kodak's interplant bus, receives certificate from Harvey W. Southgate in recognition of Pete's courtesy on the road, especially to pedestrians. Southgate is chairman of the Kiwanis Club's Courtesy Committee which awards the certificates.

"Doing what comes naturally" is the easiest way to describe the faculty of Peter Van Hanegem of Kodak Park's Garage for doing a good deed. As driver of the interplant bus, he takes his cue for courtesy from many years of experience behind the wheel. Less use of the horn and a more generous application of the brake, claims Pete, will get you farther.

He has a recent citation from the Rochester Kiwanis Club to prove his point. The award, made to citizens for their contributions to the public welfare, was in recognition of two particular incidents wherein the pedestrian safety of two small children was concerned. In both cases, Pete took time from his regular duties to assist the youngsters whose lives were endangered by vehicular traffic. More recently, he stopped his bus in a busy street to go to the aid of an old man who had slipped on the ice. In every instance, Pete proved himself a good Samaritan.

He was one of 110 Park drivers to receive a safe driving certificate from the Company for his work during 1946.



(T. M. Reg. U. S. Pat. Office)
Test your knowledge with the questions below. Grade 10 for each question. If you score 60 you're "super"; 50—you are still remarkable; 40—not bad at all; 30—time to brush up!

(Answers on Page 4)

- How can Lumenized lenses be identified easily?
(a) By checking number of lumens.
(b) Circled "L" appears after the focal length marking or serial number of the lens.
(c) Lens has smoky appearance.
- The Kodak Universal M-Q Developer may be used only for processing films.
True False
- When does the annual KORG badminton tournament begin?
Feb. 20 Mar. 8 May 8
- How can you lighten the shadow side of a subject?
(a) Powder or paint it white.
(b) Apply luminous paint.
(c) Use sheet of white cardboard or cloth to catch light and reflect it into shadow area.
- When using Kodacolor Film to take a picture of an average subject under a hazy sun, what should normal exposure be?
(a) 1/25 of a second at f/16
(b) 1/50 of a second at f/8
(c) 1/200 at f/11
- What new isotope produced at the Kodak Research Lab was shipped late in 1946 to aid medical science?
(a) Carbon 13
(b) "Heavy" nitrogen
(c) Nobrac 31

Quick Twist



Ten yards in a half minute! That's the speed with which Kunji L. Gahlot can wind his turban, as he shows Oscar Wieggen of KO's Color Studio.

From India, where he is a Kodak dealer and photographer for the State of Bikaner, Gahlot came to the U.S. to study at the New York Institute of Photography. Now he's observing in KO's Color Studio and touring Kodak plants.

He hopes to introduce Kodachrome and Ektachrome still pictures to Bikaner, where temperatures in summer rise to 116 degrees.

The Maharajah of Bikaner, a photography enthusiast, sent Gahlot to the States for training.



Box Shots—Here's proof that excellent pictures can be made with simple box cameras. The one at right is by John Bowman, who uses nothing but box cameras and is a consistent prize winner in contests throughout the country.

Linguist in Kodak Advertising Dept. Fought Tropical Ills in Many Lands

Most people shy away from mosquitoes—but not Dr. Manuel Zariquiey. He has hunted the anopheles in the Belgian Congo, Egypt, Turkey, Sicily, Italy, Central and South America.

Dr. Zariquiey, who joined the Office Advertising's Medical Div. recently to look after Kodak's Spanish medical and dental advertising and educational activities, has devoted much of his life to preventing and curing tropical diseases, especially the dread malaria transmitted by the anopheles.

Born in Barcelona, Spain, where his father was a noted pediatrician, he entered the field of research rather than child health. "Although I had assisted my father many times and acted as his X-ray technician, little did I think then that I would be actively interested in Kodak's X-ray products in future years," he commented.

Earned 3rd Doctorate

After studying malaria hematology and biochemistry at Madrid's School of Public Health in 1927, he took a year to obtain his doctorate in philosophy and history at La Sorbonne, Paris. His third doctor's degree was awarded him upon graduation from Barcelona's Medical School.

He completed two years of study at Hamburg's Institute for Tropical Medicine and then went to Fernando Poo in Spanish Guinea, Territory of Rio de Oro, and the Belgian Congo. Better treatment, epidemic control and studies of land drainage and sanitation in these sections came under his scrutiny. He experimented with monkeys and other animals native to the jungle to see if they could develop a malaria immunity.

Study of Malaria

Need for a new stain for malarial parasites brought him to Guatemala in 1936 to work with Prof. Erwin Jacobstahl. Next, he joined El Salvador's Health Department where he further studied malaria's effect on the blood of the victim.

From 1940 to 1942 the doctor traveled into country rarely seen by foreigners, going by plane, car, horseback, dug-out canoe and days



Malaria Authority Joins KO—Dr. Manuel Zariquiey, whose malaria research has led him to three continents, has now joined KO Advertising's Medical Div.

at a time on foot. His assignment: to conduct a malaria survey and epidemiological study in Venezuela with emphasis on conditions of the Indian tribes of the Orinoco and Paraguay Rivers and the Venezuelan Guayana.

Once his plane radio rescued him and his party when they were forced down in the jungle. A ham operator in Brazil picked up their message and notified the Venezuelan government which sent a rescue party. This, he claims, was his big adventure.

He visited the diamond fields in Venezuela and found beriberi prevalent among the miners in addition to tropical diseases. The government now is attempting to rectify this situation.

Most times he did not treat the people of the towns. He would lecture to them on malaria, its treatment and preventives, and then talk to the village doctor, leaving

him quinine, atabrine and other medicine for his patients.

His main concern was to locate sections ripe for epidemics and then submit measures to the government to prevent outbreaks.

Then Dr. Zariquiey became medical director of "Vita" Research Chemical Laboratories in Caracas, before joining New York University, College of Medicine, to further his research.

Edited Magazine

In New York, he became editor of the Spanish magazine, *El Hospital*, and was assistant editor of *América Clínica*.

Well equipped for this job, he speaks Spanish, French, Italian, Portuguese and English, and has a reading knowledge of German and Latin.

In his spare time, however, the doctor goes artistic. A carved burro in his office is his work, and he does pen sketches besides oil and water-color paintings.

Photo Patter

Box Camera Can Get 'em If You Plan Fine Shots

Maybe the camera you now have is just a simple box camera that for years has given faithful service. If it is, you should remember one important fact. It's the man or woman behind the

camera, and not necessarily the equipment itself, that makes the difference between sparkling, dramatic pictures and hopelessly dull prints.

Most of us have a tendency to underestimate the possibilities of the camera equipment we have. When we see a really good photograph, we usually think the photographer must have spent a fortune on his camera. The opposite is just as likely to be true. Although good pictures very often are made with expensive, complicated cameras, many of these same pictures can be made just as successfully with the simplest cameras.

A couple of years ago a photographic critic equipped 10 of New York City's finest professional photographers with simple box cameras, all loaded with identical film. The pictures which these top-notch men produced would knock your eyes out! Their prints were just as fine, on the whole, as any that could be turned out with their best equipment.

As a matter of fact, many first-rate photographers choose simple box cameras deliberately. You may have heard of John Bowman, of Mayville, N.Y. John has three box cameras—and that's his complete photographic equipment. But with those cameras he has won prizes and awards throughout the country in open competition with the best cameras made. He even has a permanent photographic exhibit in a

museum in Stockholm, Sweden.

You might suspect that he gets most of his good results from special developing and printing techniques. But he never has developed or printed a picture in his life.

The plain fact is that if you rely on your own two eyes to pick out and compose interesting subjects, you can be pretty sure that the camera you have will turn out a good photograph.

So if you have an inexpensive camera, don't be discouraged. And if you own a jewel-like masterpiece embodying the finest precision craftsmanship and the latest in engineering design, don't depend too much on that beautiful gadget to do your thinking for you.

The only way to become a good amateur photographer is to practice. Take pictures—plenty of them. Experience counts.

Even more important than experience is the ability to learn from experience. So study your prints—and study every picture you see. Try to find out what makes a picture "good." And learn the capabilities and limitations of the camera you have.

Don't expect to turn out a masterpiece every time. Even the best photographers can't do that. But do expect to show some improvement in your snapshots from month to month. If you're improving, you're on your way toward success—and that's what counts!



10 Men, Woman, of Kodak Park Prepare to Retire in March



Jesse Haight

W. H. Cornish

George Maid

Ed Granger

Edna Marthage

H. P. Burdick

John Grant

Edgar Roesgen

Charles Desmond

It's in the Park

Snowbound Hut Holds Skiers ... Lorie Stumps the Experts

Ruth MacDonald of the Tax and Dividend group in the Time Office, Bldg. 2, holds the honor and distinction of becoming the first grandmother in the department. Also taking bows is her husband, Eliell, a member of the Emulsion Coating Dept. . . . Lois Groth, Paper Planning, was a member of the cast of the play, "High Pressure Homer," given at a Rochester church Feb. 6-7. . . . Leonard Morrell, who was in the Film Developing Dept. before entering the Army, has joined the Wood Cellulose Dept., Kodak West, since his return to civilian life. An ex-corporal, Len spent 11 months at Ft. Richards, Alaska. . . . Ardent devotees of the hickory staves are Lee Gage and John Rosequist, Wood Cellulose Dept. Both enjoyed the skiing at Turin, N.Y., on different weekends, the latter figuring in an additional adventure when he and five friends were snowbound overnight in a hut in the hills. . . . Joyce Fisk, Kodaloid Dept., Bldg. 105, who is planning a cross-country trip to California via trailer, was given an office sendoff on the eve of Washington's Birthday. . . . Barrington Ware, who recently transferred from the Machine Shop to the Metal Shop, is receiving the condolences of his associates upon the death of his wife. . . . Four members of Bldg. 26 have returned to the Park after spending midwinter vacations in sunny (?) Florida. They are Jessie Bruce, Charles Flagg, Esther Rowe, and Loretta Saucke.



Ruth MacDonald

Otelia Thone, Wage Calculation, has left for Phoenix, Ariz., on an extended leave of absence. She was the guest of honor at a dinner party held at the Colony Restaurant on Feb. 10, arranged by close friends including Anita Moore and Doris Roosevelt. . . . Deane Hobbs, Paper Sensitizing Dept., after covering plenty of territory during World War II as a member of the submarine service, is continuing his peregrinations these nights on the bedroom floor. Yep, it's a boy. . . . Dick Stumpf, Wood Cellulose, qualified for an "Open the door, Richard" role on Feb. 9 when he and a friend, driving in the vicinity of Lima, N.Y., became snowbound and were forced to inquire at a neighboring farmhouse for accommodations overnight. Instead, the good farmer hid himself to the home of a friend, borrowed a snowplow, then proceeded to extricate Dick's car from the drifts. Our hero finally reached Rochester, a sadder and wiser man, at 1 a.m. . . . Gloria Mundi, Power Dept., who became Mrs. Harry Hipp on Feb. 1, was "dined" by the girls of the department at "The Ridge." . . . A skilled puck chaser is Art Bliss, Bldg. 118, who formerly pastimed with the Hershey, Pa., team which appeared regularly in Buffalo's Memorial Auditorium. While in the Army, Art spent two months as a prisoner of war in Mannheim, Germany. . . . Among the members of the Time Office who are supplementing their daytime duties with evening classes in local schools are Al Farley, Dave Willis, Blanche Rozitus, Doris Redder, Marjorie Vary, Ann Crawford, Bob Zollweg, Bob Kirchoff, Ed Solark, Dorothy Bergstrom and Don Garman. . . . Myrtle "Bunny" Smith has rejoined the KPAA Office staff in Bldg. 28 after undergoing an operation.

Mildred Steenberg has been appointed a KODAKERY correspondent in the Power Dept. . . . A linen shower and dinner was held at the Wishing Well on Feb. 26 for June Emler Rothmond by her office associates in Bldg. 58. . . . Two excited voyagers to the British Isles are Charlie Butler, Bldg. 28, and C. Newton Carter, Export Shipping. Carter sails from New York City today while Butler is in the throes of final packing for departure on Mar. 7. Both will enjoy the hospitality of the luxury liner Queen Elizabeth. . . . It's "Sad" Sam Newberry these days. Sam, a member of Ciné Stock, Bldg. 56, is lamenting the recent theft of his car from a Long Pond parking lot. At last reports, the vehicle had not been recovered and our hapless victim is preparing for the worst. . . . A young lady who can ask questions as well as answer them is Lorie Friel, women's counselor in Bldg. 29. Lorie has won three radios on the "Quiz Kids" program, one of them a handsome console model, for stumping the mental mites. She is also proudly displaying a set of Encyclopedia Britannica which she received for confounding the panel of experts on the famous "Information Please" radio feature.



Mildred Steenberg

A Box of Snickers

First Old Maid: "I shiver every time I think of a handsome young man kissing me."

Second Old Maid: "And here I've been thinking you had St. Vitus dance all these years."

Stern parent to applicant for daughter's hand: "Young man, can you support a family?"

Young man (meekly) — "But I only wanted Sally."

Office manager to new office boy: "Has the stenographer told you what to do in the afternoon?"

New boy—"Yes, sir, I'm to wake her up when I see you coming."

Doctor: "There goes the only woman I ever loved."

Nurse: "Why don't you marry her?"

Doctor: "I can't afford to. She's my best patient."

Group Served In Many Depts.

Retirement of 11 Park people becomes effective Mar. 1.

They are William H. Cornish, Chemical Plant; Leon Eberlin, Research Laboratories, who has been ill recently; Jesse A. Haight, Chemical Plant; George E. Maid, Ciné-Kodak Processing; Edward A. Granger, Garage; Charles T. Desmond, Chemical Plant; John Grant, Roll Film; Frank E. Hohenbeck, Paper Sensitizing; Edgar I. Roesgen, E&M; Edna J. Marthage, Sens. Paper Packing; and Herbert P. Burdick, E&M. (Both Eberlin and Hohenbeck were absent when the above pictures were taken.)

Total 113 Years

Cornish, Haight and Desmond, all members of the Dope Dept., have aggregated 113 years of service with the Company, nearly all of it in the same department. Cornish has almost 40 years to his credit, starting in 1907. Haight began his career in 1909 and Desmond in 1912.

The trio has witnessed the expansion of the Dope Dept. from its original staff of 12 members and the change in operating techniques from wooden barrels to the present iron mixers.

Eberlin joined the plant in 1903 as a member of the Industrial Laboratory, Bldg. 4, transferring later to the Research Laboratory, Bldg. 3, where he collaborated with Dr. S. E. Sheppard on a process for the electrodeposition of rubber and Eastman Kodak non-silica glass.

Began in Bldg. 9

One of the first men to be employed in the Ciné-Kodak Processing Dept., Maid started in the Cotton Nitrate Dept., Bldg. 9, where experiments on 16-mm. film then were being carried out. From there he went to Silver Nitrate, Bldg. 46, thence to the Dope Dept. for a short stay. He plans to spend much of his spare time traveling, beginning with a trip to California this spring. His associates are giving a farewell dinner tonight at the Dutch Mill, citing his 37½ years of service. A son, George Jr., is in the Planning Division, E&M.

A veteran of the Yard Dept., Granger is completing 36 years as a driver of the Park's numerous vehicles. A charter member of the "Crutch Club," he is looking forward to a Vermont trip and a summer in the Adirondacks.

33 Years in Department

Grant, after a short stay in Bldgs. 18 and 48, has chalked up almost 33 years in the Roll Film Dept., Bldg. 25. Hohenbeck and Roesgen began their Kodak careers almost a year apart, Hohenbeck in 1918 and Roesgen in 1919. The latter, before joining the Machine Shop, did machine assembly work in Reel Mfg., Bldg. 48, and served for a time as slitter-knife repairman throughout the Park. He is planning a visit to his twin brother in the State of Washington this summer. A daughter, Charlotte Howard, is in Bldg. 26.

Edna Marthage, who joined Kodak Park in 1922, plans to raise flowers and vegetables as a hobby. Burdick, after two decades in the E&M Dept., hopes to journey to Oregon this summer. He plans to return early next year to his farm near Hornell, N.Y.

Suggesters Earn \$7294; 415 Okayed in 1st Period

The adoption of 415 suggestion ideas, marking one of the busiest meetings in several months for the Park's Suggestion Award Committee, was reported for the first period of 1947.

In addition to \$4576.50 in regular awards, a total of \$2718 in checks for suggestions approved during the last four periods of 1946 was given out in 1947.

Anthony J. Amann, Sundries Developing, received the top award in the regular group, a \$150 check for a suggestion which proposed the use of a dye combining two operations in the manufacture of Photostat and Dexagraph spool ends. It is his seventh successful suggestion effort.

Five men received \$100 apiece for their ideas. They are Kenneth Reitz, Roll Coating; Charles B. Walker, Film Emulsion Making; Edmund B. Edmondson, Film Emulsion Coating; Paul R. Beaumont, Ciné-Kodak Processing, and William G. Coene, F.D. 10.

Reitz's Idea

Reitz suggested relocation of a roll in one of the film coating machines to accomplish an improved manufacturing condition. Walker's idea dealt with an adjustable arm which is used for holding a hopper on a film-coating machine.

A suggestion on safety on construction work being carried out at the Park scored for Edmondson. Beaumont proposed a method of chilling processing solutions and at the same time reducing the amount of chilled water used for this purpose. Coene introduced a special-type filter into a dope-making apparatus which insures proper control of viscosity readings.

11 Get \$50 Each

Ten men and one woman are listed for \$50 checks. They are Grace E. Ward, Sensitized Paper Packing; Marshall S. Loke, Roll Coating; Frank E. Klick, Roll Coating; Frank H. Pike, Film Emulsion Making; Harry E. Yost, Paper Mill; Raymond Smith, Baryta; Danzil H. Garrett, Paper Service; Edwin R. Corts, Imitation Leather; George M. Brown, Ciné Reel; Henry A. Henderson, Printing, and Leo J. Huberth, Sundries Mfg.

John J. Zurovski, Reel Mfg., topped all additional award winners with \$335 on an original award of \$15. By the adoption of his suggestion for improving the operation of a reel assembling machine, maintenance and machine down-time have been reduced.

Other high winners in the supplementary bracket are George Wagner, Roll Film Spooling, \$270; Harry Yost, Paper Mill, \$200; Jack Brightman, Roll Film General, \$150, and Alfred Spuck, Roll Coating, \$200.

Changes Mask Design

Wagner recommended a change in the design of Ready-Mount masks which made it possible to seal masks formerly discarded as defective. Yost suggested a different operating procedure on a paper-making machine whereby the production time of the machine is increased. Spuck's idea resulted in less upkeep on solvent pumps with the installation of different type valves.

A total of \$96 in awards went to suggesters in the Company's processing stations in Chicago, San Francisco and Washington.



Anthony J. Amann

6 To Complete 2 Score Years

Two members of the Powder & Solution Dept., Joseph Lavine and Karl Boeyink, are included in a group of six Park members who will observe 40 years of service with the Company during March.

The others are George Ofslager, Film Emulsion; Albert W. Covell, Emulsion Coating; Edward Marcille, Paper Sensitizing Emulsion; and Jacob Dementint, Paper Sensitizing Coating.

Qualifying for membership in the Pioneers' Club are three members who are preparing to celebrate their 25th service anniversaries. They are Ernest J. Grealey, Paper Sensitizing Emulsion; Carl C. Withey, Paper Sensitizing Coating, and Richard Redeman, Perforator Maintenance.

Max Woldach Dies

Max Woldach of the Dope Dept. died Thursday, Feb. 13. He had been ill since last December.

Hired at the Park in October of 1926, he started in the N.C. Products Dept., West Kodak, transferring to Recovery in June 1927. He joined the Dope Dept. in 1928.

Need a Notary? Park Has Three

Services of a notary with seal, required in the adjustment of ex-servicemen's terminal leave pay and the verification of true copies of discharge papers, are available at the Park.

Supplying these and other official indorsements without charge to KP folks are P. C. Wolz and Velma McCall, Employment Office, and C. A. Benson, Suggestion Office. All are located in Bldg. 2.

Glenn E. Matthews Honored By International Photo Society

Glenn E. Matthews, technical editor at the Kodak Research Laboratories, has been elected an associate member of the Oval Table Society. The honor was conferred upon the Kodak Park man for his contributions to photographic progress. The society is an honorary organization devoted to "advancement of the art and science of photography."

Among the 92 members are many persons distinguished in the world of photography. It was founded in 1935 and arranged the first photographic exhibition admitted to the National Academy of Arts. It since has sponsored outstanding salons in this country and abroad.

Matthews has been associated with Kodak since 1921 as a research chemist and later as technical editor. He has written and lectured widely on applied and scientific photography, color, photographic chemicals and amateur movies.

He is a fellow of the Royal Photographic Society, Society of Motion Picture Engineers and the Photographic Society of America. He served as technical editor of the PSA Journal from 1935 to 1940 and as a member of the PSA's board of directors from 1943 to 1946.

Other Kodakers who are members of the Oval Table Society are: Dr. C. E. K. Mees, Dr. John G. Cap-



Glenn Matthews

staff and John I. Crabtree, Kodak Park, and Adolph Stuber, Harold M. Bennett, Robert W. Brown and Fenwick G. Small, Kodak Office.

Curtis Tells Of Coal Lack, Chilly England

(Continued from Page 1)

to Kodak Pathe's offices each day. "The factory at Vincennes," he reports, "is producing well ahead of its prewar top, and yet it can't turn out enough to meet demands for Ciné and roll film and sensitized papers."

Curtis flew from New York to Ireland nonstop, missing the transatlantic record by only five minutes. "I think we could have broken the record if we had known we were so close to it," the World War I Ace and flying general of World War II said with a hint of regret in his voice.

Coming home was a much slower trip, taking five days. "You can't imagine how incredible it was," he concluded, "to step aboard the Queen Elizabeth which was warm and had plenty of food, after being in England where conditions were the direct opposite."

ES&L Modernization Loan Rush Seen as Harbinger of Spring

Spring must be just around the corner, according to the Eastman Savings and Loan Association. This belief is based on the rush of applications for modernization loans which is well under way at ES&L even though the calendar says spring doesn't begin for three weeks.

"The ES&L has become the Kodakers' Modernization Loan Headquarters as well as their Mortgage Loan Headquarters," according to Doug Foxall, ES&L head.

Quick Service Offered

Kodak people are finding the Savings and Loan especially suited to their needs under the Association's streamlined system.

No fuss or feathers are involved in obtaining a modernization loan. When necessary the money may be obtained on the day of application if requirements for the loan are met. There is no charge other than payment of the principal and interest.

One of the big advantages to loans obtained through ES&L is

that they may be repaid through payroll deductions.

People of Kodak are planning a wide range of improvements to homes and property in 1947, judging from the applications approved in the last few days for the FHA Modernization Loans.

These include: new roof, asbestos siding, modernizing bathroom, remodeling kitchen, storm sashes, screens and shades, refinishing hardwood floors, interior decorating, new furnace, asphalt drive, insulation, oil burner, installation of sewer, new cellar floor and electric wiring.

Kodak men and women may obtain information on modernization loans at the ES&L's Main Office at State Street or KP people may call at the branch in Bldg. 26 at KP.

Kodak Camera Club News

Volume 1

February 27, 1947

Number 3

CW Man Tops Field in Club Color Competition

A CAMERA WORKS photographer, Clifford Hathorn, captured top honors in the February color transparency competition held recently at the Dutch Mill. His "Winter Doorway," an excellent outdoor night



Hathorn

snow scene, gained the popular vote of the audience as determined by an applause meter, an innovation in club competitions this season. Another Hathorn entry, "Portrait at Piano," took a second prize in the Class B judging.

A complete list of the winners and their slide titles follows:

Class A (Still life and close-ups):

1. James B. Cummings, KO, "Flame Red"
2. Russell Tesmer, KP, "Garden Pride"
3. August K. Olsen, CW, "Queen of the Lily Pond"
4. Nettie J. Olsen, KP, "Lilies"

Class B (Human interest):

1. Jeannette Klute, KP, "Gate and Boy"
2. Clifford Hathorn, CW, "Portrait at Piano"
3. Doris Woehr, KP, "Camping"
4. Clarence Meteyer, KP, "Valentines"
5. Davis Whitcomb, KP, "Autumn Leaves"

Class C (Scenics and architecture):

1. Erling A. Dalaker, KP, "Boat and Buoy"
2. Clifford Hathorn, CW, "Winter Doorway"
3. Joseph Hale, KP, "Lifting Fog"
4. Betty Haithwaite, KO, "Boat"

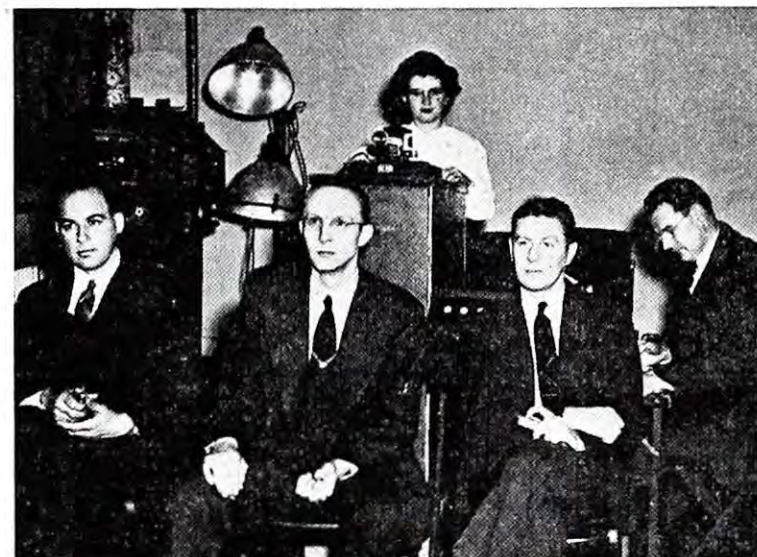
The committee of judges reports that projection was slowed down considerably because the operator had to examine slides individually for proper positioning. Of the 167 slides submitted, 30 were not properly classified, and 20 were not thumbmarked.

Remember, it is very easy to thumbmark your slide. Simply hold it the way you want it to appear on the screen and put a mark on the lower left-hand corner.

MY FAVORITE PHOTOGRAPH



"SYDNEY ANNE" Sutherland



Judging Process— Shown judging entries in Kodak Camera Club's February color competition, left to right: Henry Staehle, Bldg. 59, KP; Ossie Wieggen, Kodak Office, and John Mulder, Bldg. 26, KP, using electric voting machine, as Lois Tompkins and Joseph Hale, both of Kodak Park, record the vote.

My Favorite Photograph

(This is the second in a series of personal impressions by well-known Kodak photographers, featuring this week comments by Ralph Sutherland, KP pictorialist. See picture in column 3, below.)

"Sydney Anne" is my favorite picture because, better than any other I have of her, it represents my little daughter, Sydney, as I like to think of her. Actually, she is a junior hoyden and my problem (for pictorial reasons) was to portray her in a sweet and shy mood. With Sydney this is not so easy. She may be sweet but she certainly is not shy.

"The solution, however, was simple for I discovered that, fresh from her afternoon nap, 30 or 40 minutes are required for her to overcome a semblance of shyness and to become once more the complete extrovert I know so well. During her nap, I set up the lights. These consisted of one No. 2 Photoflood as a modeling light, one No. 2 as a camera light, and a No. 1 to light up the backdrop for tone separation.

"When she awakened, she was quickly washed and combed. Before putting on her dress, her face and shoulders received a slight application of face cream in order to introduce highlights and accentuate roundness. Her lips were deepened slightly with rouge because I planned to use panchromatic film.

"The exposure was made in a 3 1/4 x 4 1/4 Graflex on Super-XX Film Pack for 1/90th of a second at f/5.6. Development was in DK-60A for four minutes. No other retouching was done save the removal of a bruise mark on the right cheek, the result of a tumble the day before. This was accomplished by the use of New Coccine on the negative. The 16x20 print was made on Opal G developed in Selectol."



Sutherland

Club Eyes First Place in PSA Competition

Only 31 points out of first place 36 clubs located in the U.S. and Canada.

Represented in the local collection are transparencies made by Betty Haithwaite, KO; Clifford Hathorn, CW; Alton J. Parker, KP; Erling Dalaker, KP; Jeannette Klute, KP; Clarence Meteyer, KP, and H. Wes Vokes, H-E.

Train Trouble Mars Tom's Trip

A snowplow collision, flat wheels on a train and a runaway engine combined to give Tom Miller, Photographic Training Dept. head, an eventful trip home from a week's vacation in Iowa City.

It pointed to a quiet ride when Tom boarded the train, but five miles out of Toledo the onrushing train struck a snowplow, killing the two drivers.

A two-hour delay resulted before the train limped into Toledo. The train's brakes had been applied so hard in an effort to stop that the wheels had been flattened.

The conductor told Tom it was the end of the line for that train, so, noticing an east-bound train on the station's next track, he boarded it with only seconds to spare.

The train rolled along in fine shape until just outside Cleveland when the cars slowed to a stop. The engine, nevertheless, chugged forward at a great speed, the coupling having broken.

Another engine had to be brought from Cleveland, and two hours more sped by as Tom sat on the immobile train.

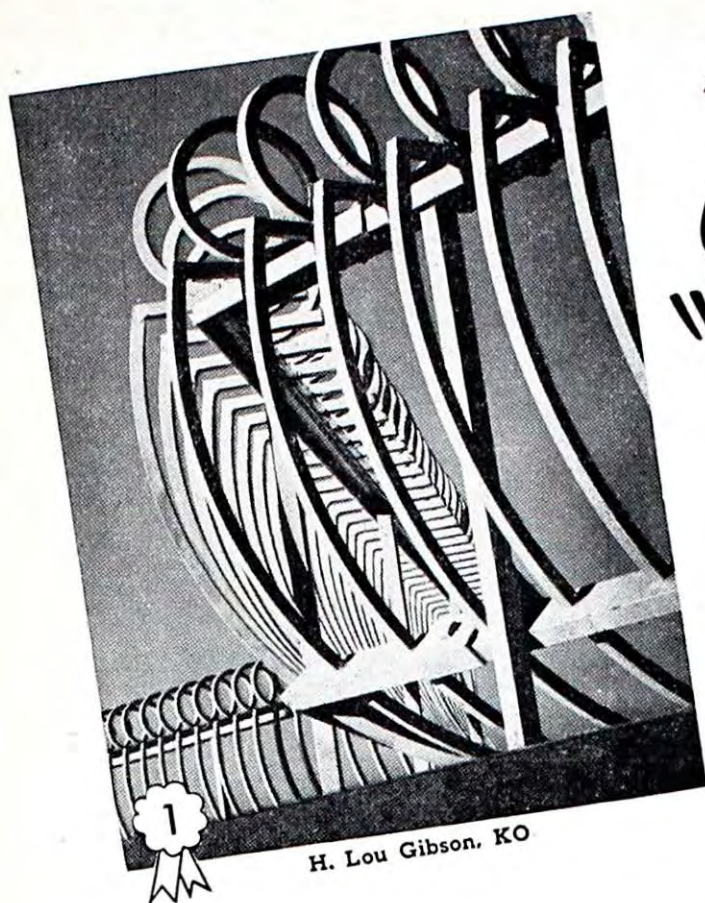
To climax his day, an eastbound train roared down the tracks puffing white smoke clouds in derision at the stalled cars. This train was made up of ex-passengers of the train which hit the snowplow.

BOWLING STANDINGS

CW Friday Webber			
Vitava	42 30	Kodalure	37 35
Portrait	39 33	Aero	35 37
Azo	39 33	Illustrators	35 37
Velox	39 34	Translite	21 51
CW Supervisors			
Enlargers	47 25	Bullets	35 37
Vest Pockets	44 28	Jiffys	34 38
Junior	43 29	Bantams	34 38
Monitors	43 29	Targets	32 40
Kodascopes	42 30	Magazines	32 40
Shutters	42 30	Brownies	30 42
Cinés	40 32	Vigilants	30 42
Six-20	39 33	Six-16	29 43
Kodaks	38 34	Ekstras	26 46
Medallists	36 36	Recordaks	24 48
CW Friday Girls			
Shutters	48 24	Vigilants	37 35
Cinés	47 25	Ekstras	35 37
Reflex	45 27	Hawk-Eyes	35 37
Bantams	44 28	Monitors	34 38
Enlargers	43 29	Bullets	33 39
Jiffys	43 29	Kodascopes	31 41
Retinas	43 29	Brownies	28 44
Junior	41 31	Magazines	21 51
Recordaks	40 32	Targets	19 53
Vest Pockets	38 34	Medallists	15 57
KO American			
Stock	38 25	Receiving	31 32
Kodakery	33 30	Traffic	29 34
Shipping	32 31	Manuals	29 34
Maintenance	32 31	Finishing	28 35
H-E Dept. 29 Shift			
Turrets	39 24	Hobs	31 32
Chucks	37 26	Motors	28 35
Spindles	33 30	Lathes	22 41
CW Wednesday Girls			
Daks	41 19	Dakons	30 30
Doublets	38 22	Domatics	26 34
Supernatics	33 27	Blmats	22 38
Twindars	31 29	Ekstras	19 41
KPAA Kodak West B-8			
Bldg. 203	45 18	Bldg. 204	35 28
Recovery	42 21	Syn. Chem.	25 38
Gel Makers	41 22	Bldg. 117	17 46
F.D. 5	37 26	Bldg. 129	10 53
KP Paper Service Dept.			
Toners	40 20	Pulpers	26 34
Developers	40 20	Printers	24 36
Retouchers	36 24	Fixers	20 40
Bleachers	36 24	Strippers	18 42
H-E Men's Ridge			
Drafting	44 22	Wig Wags	32 34
Oilers	39 27	Turrets	32 34
Grinders	37 29	Dept. 24	32 34
Recordak	37 29	Supervisors	30 34
Elec. Shop	36 30	Mach. Shop	29 37
Ramblers	36 28	Pushovers	28 38
Rinky-Dinks	35 31	Recordak II	24 43
Hotshots	33 33	Dept. 41	23 44
CW No. 1			
Duos	43 26	Junior	33 36
Seniors	37 32	Retinas	32 37
Vollendas	35 34	Recomars	32 37
Kodaflectors	33 36	Tripods	31 38
KPAA Trickworkers			
Paper Sens.	41 16	Bldg. 30	30 27
Baryta	40 17	Bldg. 57	26 31
Paper Mill	39 18	Emul. Making	25 32
Bldg. 29	37 20	Bldg. 50	8 49
Finishing	31 26	Bldg. 12	8 49

KODAKERY Contest "TOPS"

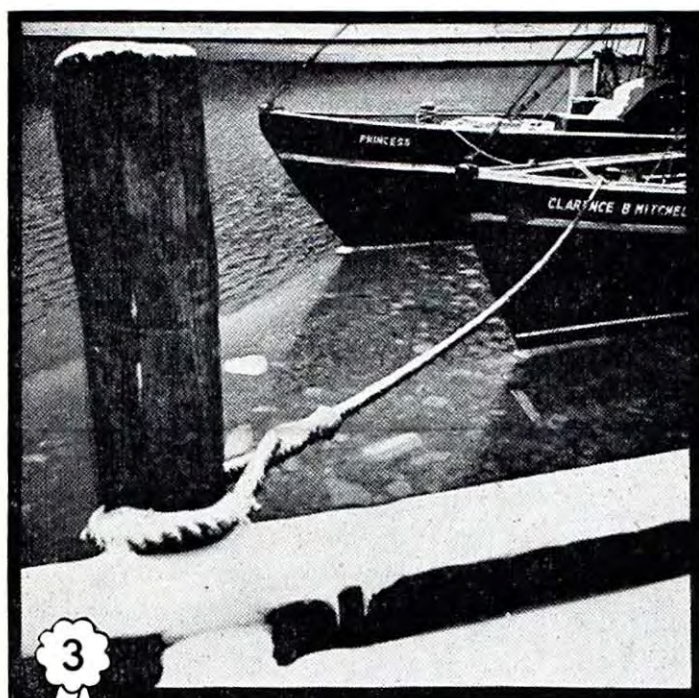
HERE are 12 of the prize winners in KODAKERY's January Photographic Awards, showing the wide variety of subject matter which the contest permits. First prize each month is \$25, second is \$15, third is \$10 and there are 10 prizes of \$5 each. An additional 25 contestants receive Merit Certificates.



H. Lou Gibson, KO



Lowell Miller, KO



Clifford Hathorn, CW



H. Wes Vokes, H-E



John N. Rice, NOD



Kenneth A. Van Dyck, CW



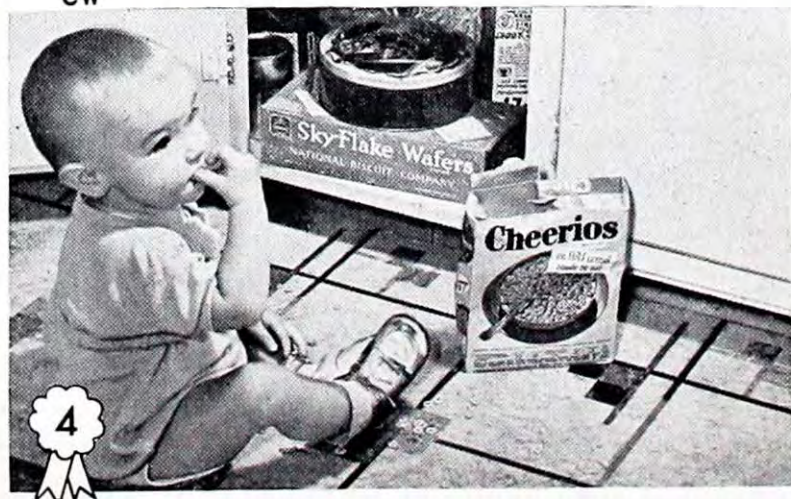
Charles Bridgman, KO



Shirley H. Houston, KO



G. D. Aydlett, CW



Roy L. Wood, KP



Larry Weis, H-E



Helen Jarvis, Duluth

The Market Place

KODAKERY ads are accepted on a first-come, first-served basis. Department correspondents in each Kodak division are supplied with ad blanks which, when your ad is typed or printed on them in 25 words or less, are put in the Company mail addressed to "KODAKERY," or handed in to your plant editor. All ads should be received by KODAKERY before 10 a.m., Tuesday, of the week preceding issue. HOME PHONE NUMBERS OR ADDRESSES MUST BE USED IN ADS. KODAKERY reserves the right to refuse ads and to limit the number of words used. Suggested types are: FOR SALE, FOR RENT, WANTED, WANTED TO RENT, LOST AND FOUND, SWAPS. KODAKERY READERS ARE ASKED TO PLACE ADS ONLY FOR THEMSELVES AND HOUSEHOLD—NOT FOR FRIENDS OR RELATIVES. TO DO THIS IS TO DENY SPACE TO THE PEOPLE OF KODAK FOR WHOM THIS SPACE IS RESERVED.

FOR SALE

ACCORDION—Piano, 120- and 48-bass. 3284 Mt. Read Blvd.
 AIR COMPRESSOR—Twin piston, ball bearing, heavy duty type, mounted on small tank with gauge. 20 Potomac St.
 ALUMINUM—Weaver, 6 pieces. Also marble-top table; walnut vanity table and bench; birdcage; china tea set. Glen. 2844-J.
 APPLE WOOD—In 12" length, seasoned. \$6 per face cord. 149 Moulson St., St. 4204-X.
 AUTO BATTERY—New, \$11. Gen. 7407-M.
 AUTOMATIC HEAT CONTROL—Reading system. Also thermostat, transformer, \$15; French Renaissance style, 5 piece bedroom suit, coil spring, \$150; mahogany 4-poster bed, coil springs, \$35. Glen. 2550-M.
 AUTOMOBILE—Ford, Model A. St. 4260-L.
 AUTOMOBILE—1930 Ford, Model A, convertible. 150 Brayton Rd.
 AUTOMOBILE—1933 Chevrolet, tudor, 6.00x16 tires. Gen. 237-R.
 AUTOMOBILE—1934 Chevrolet coupe. Service Station, corner Main and Ford.
 AUTOMOBILE—1934 Hudson, 2-door, 520 Peck Rd., Hilton 82-F-13.
 AUTOMOBILE—1935 Chevrolet coach, 693 Campbell St., upstairs, Gen. 4734.
 AUTOMOBILE—1935 Ford sedan, \$300. Cul. 2309-R.
 AUTOMOBILE—1935 Oldsmobile sedan, \$350. 29 Moulson St.
 AUTOMOBILE—1935 Plymouth coach. Also complete outfit of Marine Corp dress blues, 616 Post Ave., Gen. 455-J.
 AUTOMOBILE—1935 Pontiac sedan, 4215 Buffalo Rd., Spencerport 3-4337.
 AUTOMOBILE—1935 Terraplane coach, Glen. 607.
 AUTOMOBILE—1936 Dodge sedan, \$300. Gen. 559-W.
 AUTOMOBILE—1936 Studebaker, 4-door sedan, 590 E. Ridge Rd., West Webster.
 AUTOMOBILE—1936 Pontiac 2-door sedan, Glen. 4971-W.
 AUTOMOBILE—1937 Buick sedan, 487 Broadway, Main 6137.
 AUTOMOBILE—1936 Chevrolet coach, 740 Dewey Ave.
 AUTOMOBILE—1937 Chrysler Royal, 25 Eastview Ave.
 AUTOMOBILE—1937 Dodge sedan, Char. 365-R.
 AUTOMOBILE—1937 Ford coupe, 100 h.p. engine. Glen. 7125.
 AUTOMOBILE—1937 Ford sedan, Macedon 4520.
 AUTOMOBILE—1937 Ford tudor, Char. 2086.
 AUTOMOBILE—1937 Ford 378 Broadway.
 AUTOMOBILE—1937 Oldsmobile, 8 Concord St.
 AUTOMOBILE—1937 Oldsmobile coach, Main 3544-J.
 AUTOMOBILE—1937 Oldsmobile, 4-door sedan, 480 N. Plymouth Ave.
 AUTOMOBILE—1937 Oldsmobile coach, 305 Sneak Ave.
 AUTOMOBILE—1937 Plymouth, 4-door sedan, Main 7791.
 AUTOMOBILE—1938 Buick, \$950. Glen. 2477-J.
 AUTOMOBILE—1939 Buick tudor, 59 Chippendale Rd.
 AUTOMOBILE—1939 Buick, 4-door, \$695. 87 Montaine Pk.
 AUTOMOBILE—1939 Dodge tudor, \$750. Glen. 1405-M.
 AUTOMOBILE—1939 Ford, de luxe coupe, 38 Willmae Rd., Greece.
 AUTOMOBILE—1939 Hudson convertible, \$395. Webster 58-F-14.
 AUTOMOBILE—1939 Hudson, 4-door, 148 Ravenwood Ave.
 AUTOMOBILE—1940 Buick, 5-passenger coupe, \$650. Gen. 6693.
 AUTOMOBILE—1940 Ford convertible club coupe, 116 Parkdale Terr.
 AUTOMOBILE—1940 Plymouth de luxe, 126 Weld St.
 AUTOMOBILE—1940 Oldsmobile, 6 cylinder, 4-door sedan, 978 N. Greece Rd.
 AUTOMOBILE—1941 Dodge coach, Cul. 203-R.
 AUTOMOBILE—1942 Plymouth de luxe, \$1200. Cul. 4997-R.
 AUTOMOBILE—1946 Buick, Glen. 6873-R.
 AUTOMOBILE—1946 Willys Jeep, Bernard Love, Gen. 5333-W.
 AUTOMOBILE—Lincoln Zephyr sedan; will take smaller car in trade. 449 Hudson Ave., Main 5933.
 BABY CARRIAGE—Folding, \$20. Also girl's 28" bicycle. Char. 326-R.
 BABY CRIB—Maple, large. Also maple chifforobe, Glen. 7130.

FOR SALE

BAR—Red leather, black glass top, 2 stools, \$50. Cul. 787-W.
 BATHTUB—Also bathroom sink; 54" kitchen sink. 117 Avenue B, Glen. 3813-J.
 BATHTUB—5 ft. Also wall sink. 56 Avenue A.
 BED—Double, walnut, complete. Char. 1951-R.
 BED—Hollywood, complete. 278 Stone Rd., Char. 654.
 BED—Maple, complete with coil spring. Also 6 yds. royal blue velvet material. Gen. 5879-M.
 BED—Metal, complete. \$45. Glen. 6171-R.
 BED—3/4, white enamel, complete with new box spring. Also steel folding bed, complete; medicine cabinet. Cul. 5798-R.
 BEDROOM—SUITE—Walnut, double bed, dresser, chest, vanity and bench. Char. 2532-J.
 BEDROOM SUITE—Four piece, black walnut. Hill. 1643-W.
 BEDROOM SUITE—4-pc., burl walnut. 2438 Lyell Rd.
 BED SHEETS—New, best quality muslin, full size, 1 doz. Canandaigua 1316-J.
 BENDIX—De luxe model. \$200. Fernwood Pk., Apt. 35, Cul. 288-W.
 BICYCLE—Girl's, 26", 1071 Vroom Rd., Spencerport, N.Y., phone 349-F-13.
 BICYCLE—Girl's, 28", victory type. Main 7579.
 BICYCLE—Girl's 28". Also formals, one pink, one blue, one white, one yellow, all size 16. 280 Stone Rd.
 BICYCLE—Small size, suitable for beginner. Also darkroom equipment. Glen. 766-R.
 BICYCLES—Two boy's, 28", balloon tires. Gen. 750-J.
 BINOCULARS—German made, 8x30, new. Also floor model General Electric radio; GE exposure meter, type DW-48, leather carrying case. Glen. 1353-M.
 BOAT—St. Lawrence Guiding, 24' long, marine engine. Also Elto outboard motor, 5 h.p. Glen. 5912-W.
 BOAT—Thompson 14', Evinrude, 17.6 h.p. outboard, boat trailer. \$450. Glen. 4423-R.
 BOAT—15', 5 h.p. Johnston motor. Also 12'x12' platform; screens for porch for house trailer; 2-burner gas plates; 2 heavy sleeve boards. 82 Alpha St.
 BOOKCASE—Three-section Colonial. Char. 2810-R.
 BOOKS—Modern fiction. Mon. 605-J.
 BOWLING BALL—Lady's, three-finger, with bag, \$12. 293 Taft Ave., third floor.
 BREAKFAST SET—Porcelain-top extension table, maple finish, four chairs. \$30. Hot-water tank, 30-gal. new, \$11. Gas side-arm heater, \$5. St. 4422-R.
 BRIDESMAIDS DRESSES—Blue, size 14; and pink, size 16, satin tops, net bottom. St. 2932-R.
 CAMERA—Kodak Reflex, f/3.5 lens, case and flash attachment. Char. 602-M.
 CAMERA—Kodak, f/4.5 lens, Compur rapid shutter. Mon. 4279.
 CAMERA—Reflex, f/4.5 lens, with case. 147 Parkdale Terr., Glen. 7503.
 CAR HORN—Chevrolet 1939. Also bathtub; kitchen sink; man's bowling ball; man's ice skates, size 8; and replacement meter for Voltomist Jr. 515 Stonewood Ave.
 CAR HEATER—Also 4 wool blankets; lady's shoes, size 8C; lady's black coat, size 16. Glen. 4559.
 CAR HEATER—Arvin, hot water. Gen. 1674-J.
 CAR HEATER—\$10. Glen. 3979-R.
 CARRIAGES—Two, English coach and wicker, \$2 each. Gen. 5287-W.
 CATALOG—Or sample case, 12"x16"x16", brown, top grain cowhide, 3 compartments, \$10. 97 Adams St., Brockport, phone 308-J.
 CHAIR—Wing, \$45. Cul. 566-R.
 CHILD CARE—During day, child 2-4 years old. Glen. 5213-J.
 CLOTHING—Dresses, beige coat, size 10-12; also shoes 5 1/2 AA, 6 AAA, Mon. 2830-W.
 CLOTHING—Girl's dresses, size 1-5; snow suits, sizes 6-7. Cul. 3035-R.
 CLOTHING—Girl's 2-piece wool spring coat and bonnet, size 1. \$2; girl's 3-piece wool winter outfit, size 3, cost \$27.50. 250 Electric Ave., Glen. 4888.
 CLOTHING—Gown, light blue, size 14; green jodhpurs, size 14. Glen. 4061-M.
 CLOTHING—Lady's dresses, coats, suits, size 12-16; boy's clothing, size 2-3; girl's pink three-piece wool suit, size 2. Char. 2764-M.
 CLOTHING—Lady's gray tweed coat, size 44-46, \$5. Also black gabardine coat, \$5. Also mohair davenport, \$45. Char. 749-R.
 CLOTHING—Lady's green cloth coat, brown fur collar, matching hat; and gray suit, size 14-16. Glen. 1706-R.
 CLOTHING—Man's brown Homburg hat, size 7 1/4; overcoat, size 44-46; trousers, wool, size 44; high shoes, size 10 1/2 B. Char. 827-R.

FOR SALE

CLOTHING—Man's overcoat, size 38-40; topcoat, suit. 31 Florence St., Gen. 157-M.
 CLOTHING—Wedding gown, moire, size 14-16; lady's shoes, size 8-9; 3 pairs man's shoes, size 11AA; silver fox cape scarf. Also 3' plate warmer for restaurant. Char. 1858-M.
 COAT—Brown, size 12. Also suit, purple wool, size 12. Glen. 4185-W.
 COAT—Dark blue fitted with white fur collar, size 12, \$30. Glen. 2948-J.
 COAT—Girl's all wool red Chesterfield, size 8-10. 9 Maplehurst Rd.
 COAT—Girl's, brown Chesterfield, size 12. Gen. 6136-W.
 COAT—Girl's coat set, size 5; coat, size 14. Also ice skates, size 5; combination door 3'x6'9", wireless record player. Glen. 5925-M.
 COAT—Girl's, teddy bear, size 14. Char. 2332-W.
 COAT—Girl's winter, size 12 or 14. Char. 3032-J.
 COAT—Lady's, plaid sport, size 18-20. Glen. 1602-M.
 COAT—Lady's black, fur trim, size 16, \$15. 19 Ridgeway Ave.
 COAT—Lady's, black fitted winter with silver fox collar, matching fur trimmed hat. Glen. 2877-M.
 COAT—Lady's, green, fur trimmed, size 16. Glen. 5255-M.
 COAT—Lady's, navy blue, belted, 3/4 length, size 14. 128 Rosedale St., upper bell.
 COAT—Lady's, spring, size 12. Mon. 6595.
 COAT—Man's overcoat, Jason fleece, size 38. Randall Holden, 191 Rand St., Glen. 2432-W.
 COAT—Raccoon, size 16-18. St. 4526-X.
 COAT-AND-LEGGINGS SET—Girl's, size 5. 35 South Ave., Webster, phone 86-W.
 COATS—Boy's overcoat, \$8; reversible, \$5, size 10-12. Gen. 2277-J.
 COATS—Lady's black seal, size 40; man's overcoat, size 38. 49 Pullman Ave., Apt. 5.
 COCKER SPANIEL—Black, male, \$25. Mon. 445-W.
 COFFEE TABLE—Maple. Mrs. Harold Holden. 459 Lyell Ave.
 CONCRETE MIXER—Char. 1963.
 CRIB—Large size. Also baby's toilet seat; baby's car seat; small oil burner. St. 1960.
 CRIB—Medium size, white, complete. \$10. Glen. 98-J.
 CRIB—Maple, \$15. Also high chair, \$5. 59 Lapham St.
 DAVENPORT—With slip covers. Glen. 3538-R.
 DESK—Flat-top. Also birdcage with standard. Glen. 5061-M.
 DESK—Secretary, mahogany. Also two black Hitchcock chairs. Mon. 7618-W.
 DESK—Standard flat-top, with red leather swivel chair to match. \$50. Gen. 3960-J.
 DIAPERS—Two dozen Birds-Eye, new, \$2.50 dozen. 25 Colebourne Rd.
 DINETTE SET—Light oak, 6 chairs. St. 5518.
 DINETTE SET—Seven pieces. St. 654-X.
 DINING ROOM SET—Oak, round table, 6 armchairs, buffet, davenport tapestry. Mon. 1213-R.
 DINING ROOM SET—Nine piece, oak. Main 1359-W.
 DINING ROOM SUITE—8-piece. \$85. Glen. 2932-J.
 DINING ROOM SUITE—Round oak table, 6 chairs, buffet. Gen. 2412-R.
 DINING ROOM SUITE—Ten piece, American walnut. Also lady's coat, size 12-14, brown with pink trim, \$30; boy's brown camel's hair overcoat, size 34. \$20. 255 Wendhurst Dr., Char. 1442-R.
 DINING ROOM SUITE—Duncan Phyfe mahogany, 9 pieces. Also combination coal and gas stove. 3862 Lake Ave., Char. 1165-J.
 DOORS—French, one pair, 2 1/2"x6'10", with double acting hardware. James Proud, 627 Clay Ave., Glen. 3790-W.
 DOORS—Two inside panel. Also Arvin car heater; English baby carriage; baby scale, beam balance type. Cul. 2109-W.
 DRESSES—Three maternity, size 12. Mon. 3350-R.
 DRESSES—Wool, silk, cotton, sizes 12-16. Also sweaters; skirts; beach clothes; light blue Chesterfield coat, \$10. 1177 Lake Ave.
 ELECTRIC FIXTURES—Suitable for cottage. Also 42" kitchen sink with faucets. Gen. 7556-J.
 ELECTRIC IRON—Hotpoint, automatic heat control. Glen. 1595-W.
 ELECTRIC IRON—Westinghouse. Glen. 6075-M.
 ELECTRIC IRONS—Two. Also child's training seat and Girl Scout uniform, size 10. Glen. 3810-R.
 ELECTRIC RAZOR—Remington Threesome. \$10. 81 Seville Dr., Glen. 5365-M.
 ELECTROLUX—Glen. 1554-M.
 ENLARGER—Solar model 120, with lens. Gen. 5421-R.
 FISH TANKS—12x16x34 stainless steel; 12x12x24 stainless steel; 20x12x12. 228 Plymouth Ave. South, Apt. 8, rear.
 FIXTURES—Three indirect lighting. Also leather bed-davenport. 141 Driving Park Ave., Glen. 2954-R.
 FORMAL—Pale blue, size 12-14. Char. 723-R.
 FORMAL—Rose, size 14, \$15. Also Hickock tube volt ohmmeter and capacity checker. \$60; 8-foot toboggan with heavy pad. \$20. 873 Arnett Blvd.
 FORMAL—Taffeta, size 14. Glen. 1655-R.
 FORMAL—White, girls, size 12. Glen. 4821-J.
 FORMAL—White mousseline de sole with slip, size 14. \$10. 113 Melville St.

FOR SALE

FRENCH DOORS—One pair. Also gumwood swing door with hardware; 10" crosscut saw; and 10" rit saw. 99 Rockview Terr., Glen. 1776-W.
 FRIGIDAIRE—6 cubic ft. \$75. Cul. 4042-W.
 FUR—Red fox. \$50. 97 Lorimer St.
 FUR COAT—Black Persian paw, size 20; brown sable-dyed muskrat, size 18. St. 6264-L.
 FUR COAT—Brown Mendoza beaver, size 20. Also black dress with sequin trim, size 16-18. Mon. 8678-J.
 FUR COAT—Lady's black Persian paw, fitted style for short person. 4269 Culver Rd., Apt. 4, Point Pleasant.
 FUR COAT—Lady's muskrat, size 14, \$60. Also General Electric hand vacuum cleaner, \$10. Main 3246-M.
 FUR COAT—Marmot, size 16. Also 50, lb. icer and icebox. Mon. 3378-R.
 FUR COAT—Marmot, sable dyed, size 38. 3 Durgin St.
 FUR COAT—Mink, size 16. \$500. Main 4748, Room 711.
 FUR COAT—Muskrat, size 12. Main 6568-R.
 FUR COAT—Sable dyed muskrat, size 16. Cul. 3946-J.
 FUR COAT—Silvertone muskrat, 3/4 length, size 14. 215 Flower City Pk., Glen. 1267-R.
 FUR JACKET—Lady's, black skunk, size 12-14. 263 Goodman St. S., side entrance.
 FURNITURE—Baby carriage, \$4; bassinet, \$4; playpen, \$7; Philco floor model radio. \$15. Cul. 4532-M.
 FURNITURE—Bedroom suite; bed and dresser, new springs; bedspread; maroon leather hassock. Also furnace grates and door. Glen. 820-W.
 FURNITURE—Dining room suite, 9 pieces. St. 4291-L.
 FURNITURE—Dining room suite, 9 piece, table pad; 8'3"x10'6" rug, \$55. Also full-size maple bed, complete, \$50; 3-piece chrome-and-red leather breakfast set, \$30. Gen. 2220-W.
 FURNITURE—Dishes; mirrors; pillows; roaster; electric iron; refinished bird cage and standard. 599 Lake Ave., Apt. 2.
 FURNITURE—Five-piece bedroom suite; floor and table lamp; electric coffee set; electric percolator; living room mirror; table; curtains; draperies. Cul. 3077-W.
 FURNITURE—Living room suite and kitchen set, complete. Glen. 1458-W.
 FURNITURE—Maple bedroom set. St. 2616.
 FURNITURE—Mahogany oval library table; oak writing desk; small heating stove; Orthophonic victrola; kitchen clock; sewing table; small stand. Gen. 1680-R.
 FURNITURE—Modern solid walnut dining room suite, matching oak library table; settee; rocking chair; arm chair. Mon. 179.
 FURNITURE—Studio couch, maroon, \$25. Also walnut dresser, \$10. Mon. 6922-M.
 FURNITURE—Studio couch; dining room set, 9-piece, round table; portable typewriter, 15 Rainier St.
 FURNITURE—Telephone table and chair set; walnut dresser. Also girl's housecoat, size 8; 2 white muffs. Char. 590-R.
 FURNITURE—Three-piece wicker set, white with red leather cushions. Also coil springs for double bed. Gen. 6135-J.
 FURNITURE—Turquoise upholstered Chippendale type sofa; leather top coffee table; Simmons studio couch. Cul. 2109-W.
 FURNITURE—Thor washer; table-top stove; 50-lb. icebox; kitchen set; junior bed; Venetian blinds; 9'x12' rug; lamp; houseware. Gen. 6292-R.
 FURNITURE—Used. Mon. 3216-M.
 FURNITURE-FURNISHINGS—Modern, complete 5 rooms. 780 Jefferson Ave.
 GAS RANGE—Modern Bengal combination, with coal attachment. \$25. Cul. 4819-R.
 GENERATOR—For 1939 V-8 Ford. \$8. J. Van Dorpe, Fairport 126-M.
 GOWN—1 pink satin; 1 peach satin and marquisette, size 9. St. 3089-R.
 GUN—Remington pump, Model 31, 20-gauge. \$60. Char. 1007-J.
 HAWAIIAN GUITAR—Glen. 332-M.
 HEATER—Gas, 30-gal. hot-water tank. Cul. 777-J.
 HOT BED SASH—Fifty. Also single record player. 1180 Long Pond Rd., Greece.
 HOT-WATER BOILER—30 gallon, side arm gas heater and Bucket-A-Day coal stove for same. F. L. Smith, 174 Eastman Ave., Glen. 3469-J.
 HOT-WATER HEATER—Automatic, Viking, 20-gal. fuel storage drum. Also electric mixer with juicer. Cul. 4995-R.
 HOT-WATER HEATER—Bucket-A-Day and 30-gallon tank. Cul. 287-J.
 HOUSEHOLD FURNISHINGS—Char. 737-R.
 ICEBOX—50-lbs., giving away. 571 Thurston Rd., Glen. 1710-R.
 ICEBOX—50-lbs., white enameled metal. St. 4927-J.
 ICEBOX—50-lbs., white porcelain. Also folding iron cot. 136 Goodwill St.
 ICEBOX—Graves, cork lined. Also White Star gas range, right-hand oven; Brunswick victrola, console model. Char. 2524-J.
 ICE SKATES—Boy's, size 5 and 1 1/2, black; girl's size 6, white; and children's skis. Char. 2422-W.
 ICE SKATES—Boy's, size 10, tube. Mon. 1163-J.
 ICE SKATES—Girl's, size 7. Also man's, size 11. Cul. 2935-M.
 ICE SKATES—Hockey, size 9, Canadian, hard toe. 129 Hawley St., Gen. 1596-W.

FOR SALE

ICE SKATES—Tubes, size 11, size 12. Glen. 6307-R.
 ICE SKATES—Two pair, tubes, sizes 8 and 10. \$4 a pair. Char. 2846-J.
 INSULATION—Twenty boxes rock wool batts. \$1.75 each. Also 2x4 boards, 4' long, 10 cents each. 250 Auburn Ave., Glen. 3169-M.
 JACKETS—B-3 Army surplus, leather with sheep lining. 50 Maplewood St., Honeoye Falls, phone 259.
 JUNIOR BED—With side rails. Also No. 53 Winchester rifle; 32 calibre Weaver scope. Cul. 1833-M.
 KIDDIE CAR—Also rocking horse; reed stroller; child's arctics, sizes 6 and 9; headphones; congo drum rug 6'x8'. 19 Kisslingbury St.
 KITCHEN SET—Maple, porcelain top. Also 3-piece living room set. 49 Galusha St.
 LACE CURTAINS—4 pair; 3 window shades 44"x68"; 2 window shades 44"x43", 1 floor lamp; 1 table lamp. Char. 1696-W.
 LADDER—Extension, 40'. Char. 2109-R.
 LAWN MOWER—Power, Doyle Cyclomower. Glen. 7574-W.
 LIGHT METER—G.E., latest model, 8DW58Y4, carrying case. \$20. 17 Minnesota St., Cul. 4678-R.
 LIVING ROOM SUITE—Three-piece, \$25. 15 Ross St., Glen. 3132-R.
 LOT—On Victor-Mendon Rd., nearly 1 acre. 327 Mercer Ave.
 MANGLE—Thor. Glen. 6642-R.
 MOTORCYCLES—Harley Davidson and side car, German B.M.W., and English Triumph, twin. 198 Brayton Rd., Char. 1344-M.
 MUSIC BOX—Mahogany, table model, with 20 records. \$90. 269 Winfield Rd.
 NURSE'S CAPE—Also 4 nurse's uniforms, size 18. 503 Columbia Ave., Gen. 2544-M.
 OATS—Hay, near Victor. Glen. 5063-R.
 OIL BURNER—Pot type. \$45. Main 8090.
 OUTBOARD MOTOR—Champion, 3 1/2 h.p. \$50. 181 Primrose St.
 OUTBOARD MOTOR—Waterwitch, 5 h.p. 150 Spruce Ave.
 OVERCOAT—Man's, black, size 40. Pittsford 152-J.
 PEN-AND-PENCIL SET—Eversharp, gold-maroon skyline. \$10. Martha McNeilly, Main 2791, ext. 92.
 PHONOGRAPH—Electric, automatic, 7-tube, brown alligator case. \$55. Gen. 7038-R.
 PHONOGRAPH—Portable. \$15. St. 3152-J.
 PIANO—Ludwig upright. 97 Pulaski St., rear.
 PIANO—Kimball upright, oak. \$65. 129 Rutgers St., Mon. 4896-R.
 PLAYPEN—Raised. 53 Vaness Ave.
 POCKET WATCH—Hamilton 21 jewel, adjusted to 5 positions. Glen. 2054-J.
 POCKET WATCH—Man's Hamilton masterpiece, 23 jewels. Berge Rd., Ontario, phone 3927.
 PUPPIES—Dachshund, two, \$50 each. Also 2 dogs at stud, small size registered stock. 66 Goodwill St., Glen. 2669-W.
 PUPPIES—Irish collie, 6 weeks old. Rush 96-R.
 PUPPIES—Registered, Beagle, 3 males, 3 females. C. Weidman, 69 Winfield Rd.
 PUPPY—Collie—Shepherd, male, 5 months old. Richard Taylor, 543 Benton St., Mon. 4297-J.
 PUPS—Beagle, pure bred, born Jan. 7, 1947. 275 Sylvan Rd.
 RADIO—Automobile, Motorola. \$20. Also Argus miniature camera, f/4.5, 1/200, with enlarger, \$50; ABC washing machine, \$30. 153 Glide St.
 RADIO CABINET—Also oak dining room table and 6 chairs. St. 5261.
 RADIO—Ivory table model Zenith. Mon. 4391-J.
 RADIO—G-E, push-button console. \$15. Glen. 5665-M.
 RADIO—Philco, console, 11 tube. Char. 1134-R.
 RADIO—RCA, cabinet style. 218 Birr St., Glen. 56-M.
 RADIO—Stewart-Warner console. Glen. 1440-M.
 RADIO—Table model, 8 tubes. Mon. 3350-R.
 RADIOS—Philco and RCA floor model. Also wireless record player. 259 Seward St., Gen. 3297-M.
 RANGE—Andes gas, insulated oven with heat control. Char. 2114-M.
 RANGE—Gas, table-top. 141 Wendhurst Dr.
 RANGE—Gas, Norman, green-and-white, good condition, \$65. Glen. 2360-W.
 RANGE—Oil, cream-and-green, with bottled gas. Main 2136.
 RANGE—Sterling combination coal and wood; lady's all-wool fuchsia suit, size 18; rainjacket, medium size. 301 Peck Rd., Spencerport.
 RAZOR—Remington Threesome electric. Main 3545-J.
 RECORD PLAYER—Automatic. Also GE automatic heating pads; Sun-Kraft sun lamp. Char. 2732.
 REFRIGERATOR—Electric. Also rugs. Cul. 3448-J.
 REFRIGERATOR—Leonard, apartment size. Cul. 287-J.
 REFRIGERATOR—Modern top icer. \$75. Cul. 3029-R.
 REVERSE GEAR—Marine. Also prewar bicycle; pair roller skates; 2 cylinder, 2 cycle marine engine, 6 H.P. Char. 1027-J.
 RIDING BOOTS—Lady's, size 7. \$5. Char. 994-J.
 RIDING BOOTS—Size 8 1/2. Also jodhpurs, size 32 waist; white dinner jacket, size 36. Cul. 3870-W.

(Continued on Page 7)

FOR SALE (Continued from Page 6)

RIDING HABIT—Lady's, coat and breeches, size 14, boots, size 7. Char. 373-M.

RIFLE—Crosman, air, factory rebuilt with 1000 pellets. Gen. 1698-R.

RIFLE—Remington, 37 target, micrometer sights. Gen. 407-W.

ROLLER SKATES—Girl's, white, size 8, Chicago Rollers, and carrying case. Also shoes, size 8½AAA, pumps and sandals. Char. 627-W.

ROWING MACHINE—\$6. Also mahogany piano bench, \$4. Char. 2788-J.

RUG—Axminster, 9'x12'. Also ¾ size bed; day bed; side arm hot water heater; 3-armed rocking chairs; Airway vacuum sweeper and equipment; 2 electric fixtures. 235 Steko Ave., Glen. 920-W.

RUG—One 9'x12', slightly worn, \$15. 92 Armstrong Ave.

RUG—Sanford Beauvais Thelton, 9x15, neutral coloring. Gen. 2437-W.

RUG—With mat, 8'x10', unused since dry-cleaned. 50 Maplewood St., Honeye Falls 165.

RUGS—9'x14', blue broadloom, \$100; 9'x10' wine broadloom, \$80. 1351 Winton Rd. N.

SADDLES—Two riding, McClelland Army style. 126 Ridgeway Ave., Hill. 2054-J.

SAILOR SUIT—For 5-yr.-old boy, navy wool. Also plaid shirt; rubbers; arctics. \$4 takes all. Gen. 6947-M.

SEWING MACHINE—Electric Singer, portable. \$70. Also Zenith hearing aid; and 2 Acme adjustable dress forms. 45 Jones Ave., Glen. 2923.

SEWING MACHINE—Electric White, complete with attachments. Char. 2629-R.

SEWING MACHINE—Electric, \$40. Also washing machine, \$30. Gen. 2181-R.

SEWING MACHINE—White, drop-head, \$25. Glen. 4321-J.

SEWING MACHINE—Wilson No. 8, foot treadle. Also water tank, 30 gallon. Glen. 4287-M.

SHOES—Boy's, white and brown, sizes 6 and 9; boy's coat-and-leggings suit, blue, size 2; and baby push sled. Glen. 5530-M.

SHOES—Lady's Cherry Coke, size 5, with matching purse. Cul. 4701-W.

SHOES—Lady's, genuine alligator, size 7B, \$10. Also girl's navy blue suit, size 15; extra warm tan winter coat, size 14-16, \$5 each. 495 Cedarwood Terr., Cul. 3296-M.

SHOES—Woman's, Arch-Lock, 7½C; suede, 7B; Enna-Jettick, 7½D; also 3 pair slightly used, 7C and 7½C. Mon. 2122-W.

SINK—42" white porcelain with 7" apron, chrome mixing faucets and hangers. 151 Lenox St.

SINK—White porcelain, 54", apron sink, right hand drainboard, mixing faucets. 1015 Long Pond Rd.

SKIS—6' maple with binders; ski shoes, size 10½; metal ski poles; ski gloves; odd ski hickory 6'9". Also washing machine. 140 Conkey Ave.

SKIS—Three pairs, hickory with bindings, 1 pair Flexible Flyer laminated with metal edges and safety bindings. 213 Belcoda Dr., Char. 2492-J.

SLED—4½'. Also lady's brown pumps, size 7AA; blue net formal, size 14. Glen. 6955-W.

SLED—Flexible Flyer, 3-passenger. Glen. 7108-R.

SLIDE RULE—Pollyface, 10". Also mechanical engineer text books; electric razor. Glen. 4973-W.

SOUND PROJECTOR—Victor, 16-mm., with three 1600-ft. reels of film. \$200. 128 Peck St.

SPRINGS—Simmons Beautyrest inner-springs, for ¾ size bed. \$20. Glen. 656-R.

STORM WINDOWS—And screens, 6 pair, 34x46. Hill. 2787-W.

STOVE—Combination coal, oil and gas. 179 Albemarle St.

STOVE—Florence, combination gas and oil. 111 Keehl St.

STOVE—Gas range table top, 4-burner. 221 Knickerbocker Ave.

STOVE—Norge, \$70. Glen. 6028.

STOVE—Table-top gas. Glen. 5730-J.

STOVE—Three burner, gas. Also maple-rocker. Hill. 1773.

STUDIO COUCH—And chair, mohair. Also Florence two-burner oil stove, \$35 complete. 43 Morris St.

STUDIO COUCH—Glen. 3115-W.

STUDIO COUCH—\$40. Char. 2084.

SUITCASE—Man's genuine black walrus, shirt compartment. Also single maple bedstead; single barrel shotgun; cot; electric Schick razor. 345 Augustine St.

SUITS—Lady's, two, size 12-14, \$35 for both or will sell separately. Main 3246-M.

SUMP PUMP—For cellar drain. \$40. Char. 2602-M.

SUN ROOM FURNITURE—Three-piece wicker set. Glen. 5481-W.

TABLECLOTH—Pure Irish linen, 72x90. Box 52, Hulberton, N.Y.

TABLE SAW—8". Also Wheeler Wilson treadle sewing machine. Glen. 1117-M.

TELEPHONE STAND AND CHAIR—One combination. Glen. 6344-M.

TEA SET—4-piece, antique silver plated. \$50. Also child's hand-knit helmet and red mittens, size 2-2½ yrs. Hill. 1955-R.

TIMOTHY HAY—Baled 18 tons, \$15 a ton, barn delivery. Main 2781-J.

TIRE—6.50x16, new recap. Glen. 7527-W.

TIRES—Two, 6.00x16, driven 300 miles, \$25 for both. Main 3319-R.

TIRES—With tubes, 7.00x15. Glen. 3906-M.

TIRES—16", two. Gen. 4219-M.

TIRES AND TUBES—Two nearly new, 4.50x25. \$25. Char. 1221-J.

TOBOGGAN—With pad, 10'. Glen. 6223-J.

FOR SALE

TRICYCLE—10", \$10. Also 2 pair skis, 7' and 7¼", metal edges, adjustable length and width clamps. \$20 pair. 59 Rye Rd.

TRICYCLES—Velo-King, \$8, another \$4. Also 2 stoves, 1 small combination, 1 gas, \$10 each; baby crib, \$3; sled, \$1. 348 Electric Ave.

TUXEDO—Double-breasted, 39 short, \$30. Gen. 2842-W.

TUXEDO—Single breasted, size 40-long. Char. 542-M.

VACUUM CLEANER—Also Westinghouse hand cleaner; \$25. Glen. 5726-W.

VACUUM CLEANER—Kenmore. \$25. Also mahogany piano stool. Gen. 4303-M.

VACUUM CLEANER—With attachments, upright. St. 4526-X.

VIOLIN—Gen. 1321-R.

VIOLIN—With case and stand. 75 Sycamore St.

WASHING MACHINE—Bendix Dial-A-Matic home laundry. Cul. 4796-J.

WASHING MACHINE—Easy. 54 Merrill St.

WASHING MACHINE—Easy, with wringer and twin porcelain laundry tubs on steel stand. Hill. 1382-W.

WASHING MACHINE—Glen. 3626-M.

WASHING MACHINE—Maytag. Also 2 tires and tubes, 6.50x16; large chemistry set; two Boy Scout camp cooking kits. 502 Seward St.

WASHING MACHINE—Portable. Also small radio. 1382 Emerson St.

WASHING MACHINE—Whirl-Dry. Cul. 3290-R.

WEDDING DRESS—Size 14, white satin top with long sleeves, full net skirt entrain, never worn. \$38. Glen. 3060-R.

WHEEL CHAIR—Small. \$25. Glen. 5734-R.

WRIST WATCH—Man's, Lord Elgin, 21-jewel. Mon. 8542-M.

HOUSES FOR SALE

Cape Cod, 6 rooms, attached garage, large lot, built in 1941, 12 minutes from KP, occupancy by April 1. Glen. 7365-M.

Double, 2-car garage, modern conveniences. Glen. 1934-R Sunday from 12 noon to 4 p.m.

Eight rooms, with furnishings. Char. 737-R.

Eight rooms, Ridge-Culver section, two-car garage, two bathrooms, copper roll screens, oil heat, lot 90'x150'. Cul. 4328-J.

Large, 6-room, double garage, acre land, all improvements. 4488 Mt. Read Blvd. Meigs St., easily converted into 2 apartments, has separate entrance for up and downstairs. \$5500 to close estate. Cul. 3764 after 6 p.m.

Portland-Norton section, 6 rooms, single, garage. Cul. 4916-J.

Single, 6 rooms, garage, 5-minutes walk from KP. Glen. 4757-W.

Six rooms, remodeled, hot water heat, 2-car garage, lot 75x150. Mon. 8306.

6 rooms, modern, on Terrace Pk., extra room on 3rd floor, shower and bathroom in basement, enclosed side porch, storm windows throughout, 2-car garage. Gen. 7570-W after 5 p.m.

6 rooms, with 3 acres in Webster, ¼ mile from Lake on State highway, well landscaped, see owner E. Happ, Van Alostyne Rd., Webster.

Six rooms, newly decorated, sun porch, extra room on third floor, large mirror over fireplace, modern kitchen, large flower garden, furnished or unfurnished. Char. 530-W.

7-room semi-bungalow, comfortable, lot 60x225, 14 garages, 1 block from school, shopping, bus, furniture optional. Gen. 7767-J.

W. Ridge Rd., lot 87x251, fenced in, oil heat, fireplace, 6-years old, master bedroom, attached garage, screened porch, sun deck, powder room. \$13,800. Glen. 3444.

BUNGALOW—Culver-Titus section, modern, 5-room, 2-car garage. Glen. 875-R.

BUNGALOW—Modern, new roof, painted recently, gas heat, new steel and porcelain sink, furnished, low tax district. \$5500. 166 Chalford Rd.

BUNGALOW—Six-room, new, garage, large well-shrubbed yard, 15 minutes to KP, low assessment, possession on closing. Glen. 5179-M.

COTTAGE—At White City, complete with furniture. \$4000. 23 Lake View Pk., Glen. 6554-M.

COTTAGE—Oneida Lake, 4 bedrooms, large living room, kitchen, electric refrigerator, combination range, \$4000. Cul. 3410-W.

FARM—145 acres, 3 miles south of East Bloomfield. Mon. 5067-R.

WANTED

AIRPLANE LUGGAGE—Lady's, 2-piece. 155 Morrill St.

AUTOMOBILE—Buick club coupe, 1940-42. 94 Maryland St.

AUTOMOBILE—Model A Ford. Also registered springer spaniel puppy, male. Main 692-R.

AUTOMOBILE—1930-31 Ford. Main 5163-R.

BABY BASKET—On standard. Write Mrs. J. DeVey, 122 Ridgeway Ave.

BABY CARRIAGE—Whitney, folding. Char. 2570-W.

BABY'S BED—High-sided or a youth bed. A. Williams, 909 Park Ave., Cul. 3070-R.

BED—Single, or twin beds, maple. Char. 2106-R.

BENCH SAW—Also drill press for home use. Glen. 4045-J.

CAMERA—8-mm. movie. Glen. 4101-R.

CAMERA ADAPTER—For 18 Recomar, 35-mm. Glen. 685-R.

CAMERA LENS—One wide angle for 16-mm., Model K Ciné-Kodak. 139 Fillmore St.

WANTED

CAMERA—Duo Six-20, with f/3.5 lens and Compur shutter. Char. 1205-M.

CAMERA—Speed Graphic, 4x5, no lens, any condition. C. Hurlburt. Glen. 7083.

CHEST—Highboy or secretary. Also table and cupboard. Char. 1201-R.

CHILD CARE—Woman to care for 3 children aged 2-5-7. Mrs. R. Raymond, 34 Oakland St.

CONCRETE MIXER—Hand or power driven. Or will rent. Hilton 158-F-4.

DAGUERREOTYPES—Cul. 3598-R.

DESK—Governor Winthrop secretary. 138 Northfield Rd., Glen. 1044-W.

DESK—Kneehole type, mahogany preferred. Char. 375-R.

DESK—Office. Cul. 6877-R.

DINING ROOM SUITE—Modern, mahogany, medium size, 9 piece. Mon. 1627-R.

ELECTRIC WELDER—Gas driven, 300 amp. Fairport 910-F-23.

ENLARGER—Elwood or similar type, 5x7. Glen. 371-W.

FENDER—Left front for 1939 Plymouth. Char. 134-J.

FENDERS—1938 Chevrolet, left and right rear. Also car radio. Glen. 4397-W.

FILE CASES—Two, letter size. Glen. 2665-R.

FILM HOLDERS—2¼x3¼ Graphic, cut. 1011 University Ave., Apt. 46.

FIREARMS—Antique, preferably muzzle loaders, pistols or long guns. J. F. Collins, 95 Devon Rd., Gen. 407-W.

FRAME—For Ives tinplate. Also Lionel cars and locomotive. 607 Driving Park.

FURNITURE—Dresser or chest of drawers, wardrobe, floor lamp. Mon. 2030-R.

GARAGE—S. Plymouth Ave. and Troup St. or vicinity. Glen. 386-J.

GOLF CLUBS—Used set. Mon. 3348-M.

HOUSE—Single, around \$5000, urgent. Cul. 3555-R.

KITCHEN SET—Porcelain top. Gen. 6699-R.

LADDER—Extension. 380 Durnan St.

LIFT CHAIN—For ½ ton Ford or Triplex block hoist. 20 Potomac St.

METRONOME—Cul. 4331-W.

METRONOME—Glen. 5500-M.

MITRE BOX—Carpenter's, and saw. Mon. 3882-J.

MOVIE CAMERA—8-mm. Glen. 4101-R.

OFFICE DESK—Metal or wood. Cul. 1828-R.

OIL BURNER—Rotary, or gun type. Also good standard typewriter. W. Beeley, Avon, N.Y.

PIANO—Cul. 1607-R.

PIANO—Glen. 7131-W.

PIANO—Small, studio size or spinet. 22 Essex St.

PIANO—Spinnet. Marjorie Narrie, Glen. 4431-W.

PLAYPEN—Baby's. St. 1017-R.

Notice!

Because of the large number of ads KODAKERY receives each week, we have found it necessary to enforce some of the rules more strictly than in the past. All ads must be on ad blanks and signed by the person handing in the ad, with department included. Ad blanks may be obtained from the correspondent in your department or in your KODAKERY Office. After Mar. 1, no ads will be published unless they are on ad blanks and signed.

PROJECTOR—No. 2 Kodaslide. Main 519-M.

RANGE—Apartment size, 3-burner. St. 5669-J.

RAW SKINS—Muskrat and mink. Webster 253-R.

RIDE—Culver and Fairlea Dr. to KP and return, start 8 a.m. Cul. 3692-J.

RIDE—Daily, to and from CW and Wendhurst Dr. Char. 935-J.

RIDE—From Lake and Pollard Ave. to KP, 8 to 5 p.m. Char. 202.

RIDE—From Monroe and Goodman, or Park and Goodman to KP, 8 to 5 p.m. Mon. 1865-W.

RIDE—From N. Chili to KP, 7 to 3 p.m., Mon. thru Fri. 45 Orchard St., N. Chili 34205.

RIDE—From Webster-Fairport Rd., corner State Rd. to KP, Mon. 8 to 5 p.m., Tues. through Fri., 8 to 6 p.m. Webster 208-F-12.

RIDE—From Williamson or Ontario to KP, 8 to 5 p.m. Glen. 6910-W.

RIDE—To and from H-E, regular shift, from Merwin, off Winton Rd. 105 Merwin Ave.

RIDE—To and from H-E from southern tip of Conesus Lake. 8-4:30. Livonia 800-F-12.

RIDE—To and from KP, 8 to 5, corner Child and Masseth St., Gen. 7531-W.

RIDE—To Los Angeles about March 1, light luggage, will share expense. Cul. 4037-J.

RIDE—To KP from Brockley Rd., 7 to 3 p.m. St. 3403-R.

RIFLE—22 automatic with telescope. 204 Sanford St.

RUG—8'x10'. Glen. 6839-R.

RUG—9'x18' or 12', rose. Cul. 757-R.

SANDER—Electric, portable, belt type, about 3". Cul. 566-M.

SAW—Circular, 7"-8". Cul. 1549-R.

SAW—8" or 10" tilting arbor combination. Char. 2472-W.

SEWING MACHINE—Prefer Singer portable. Glen. 6947-W.

WANTED

SINK—White porcelain, 84" long. 1386 Lake Ave., Glen. 1229-R.

SNOWSUITS—Sizes 7 and 10. Also set of Encyclopedia Britannica. Char. 1858-M.

SOCCER—Or basketball, used. Glen. 2712-J.

SPINET—Or small upright. Mon. 7826.

SUIT—Men's tails, size 38-40. Gen. 6604-W.

SUMP PUMP—Automatic; laundry trays; oil burner or space heater. Cul. 1769-W.

TARPAULIN—Approximately 10'x12'. Perkins, Cul. 2213-W.

TWIN BEDS—Walnut. Char. 3148-W.

TYPEWRITER—Elite type preferred. Gen. 1069-R.

TYPEWRITER—Standard keyboard. Glen. 5925-M.

TYPEWRITER—Underwood Standard preferred. St. 6274.

UNIFORM—Nazareth, size 16, heavy weight. St. 1241-J.

WARDROBE TRUNK—Glen. 6028.

WARDROBE TRUNK—Or foot locker. Cul. 1916-W.

WASHING MACHINE—Electric. Also sewing machine, electric preferred. Glen. 1226-R.

WASHING MACHINE—Small, apartment size. 31 Harrison Terr.

APARTMENTS WANTED TO RENT

Available April 1, furnished or unfurnished for young married couple. Char. 1909-M.

By Kodak engineer, wife and child, 4-room, unfurnished. Cul. 5627.

By middle-aged couple, 3 or 4 rooms, unfurnished, or flat. Ivan Pickett, Glen. 2868.

Call Cul. 477-J.

Flat or Boston, unfurnished 4-5 rooms, veteran and wife, both employed. Hill. 2404 after 6 p.m.

Flat or house, 2 bedrooms, unfurnished, couple and baby. Gen. 6710-M.

Flat or house, unfurnished. Char. 2799-R.

Flat or house, unfurnished. 590 E. Ridge Rd., West Webster.

Flat or house, 2 or 3 rooms. Roman Bostwick, 70 Savannah St.

Flat or rooms, for veteran and wife, both employed. Gen. 3357-J.

Flat or house, unfurnished, to accommodate 5 adults. Char. 1915-J.

Flat or small house, 2 bedrooms. CW KODAKERY.

Flat or apartment, for 3 adults. 2 working, best references. Glen. 2092.

For veteran and wife, furnished or unfurnished by April 1, or house. Betty Hall, Mon. 5157-W.

For two adults. Glen. 3756.

For two business girls, furnished. Gen. 5976.

Furnished, for working couple. St. 1476-L.

Furnished or unfurnished by employed veteran and wife. Glen. 2786-J.

Furnished or unfurnished, 2 to 4 rooms, for returning veteran and wife. Mon. 4141.

Furnished or unfurnished, 3 or 4 rooms, by young couple, both employed, prefer KP area. 152 Alpha St., Char. 955-R.

Furnished or unfurnished, Kodak veteran, wife and child, by May 1. Bob Mahone, 306 East Ave.

House or flat, 4-5-6 rooms, veteran, wife and 2 children, urgently needed. Cul. 6877-R.

Newly married couple, East Side preferred, by April or May 1, will pay up to \$85. Cul. 5386-J.

Or flat, 3-5 unfurnished rooms, veteran and wife, both employed. Mon. 3973.

Or flat, 4-5 rooms, for 3 adults. St. 1411-R.

Or flat, for 3 adults. Gen. 4455-W.

Or house, 4-5 rooms. Cul. 6225.

Or house, 4-5 rooms, in city, for veteran and wife. H-E KODAKERY Office.

Or house, five rooms, unfurnished, for veteran, wife and child. Glen. 6459-M.

Or half house, 4 or 5 rooms, furnished or unfurnished, for KO member, husband and well-disciplined 14- and 12-year-old daughters. Mrs. Davis, Main 8172 after 6 p.m.

Small, for employed couple. Gen. 1462.

Three or four rooms, unfurnished, for veteran and wife, both working, by April 1. Char. 519-W.

2-room, kitchenette, urgently needed by mother with daughter of high school age. Hill. 1986 between 9 a.m.-5 p.m., ask for Mrs. Louise Lane.

3 rooms, unfurnished, by April 15, CW KODAKERY 6256-334.

Three-4 rooms, for young working couple. Main 4570-R.

Three or 4 rooms, unfurnished, for married couple and 4-month-old baby. Glen. 1412-W.

Three or 4 rooms, by business couple, by May, good references. Main 2726-M or Gen. 1832-W.

Two or three, for young married couple, not over \$40. Char. 1013-M.

Two or more rooms, unfurnished, urgent by March 1. Gen. 7115-J.

Two or 3 rooms, for summer months only, by veteran and wife. Gen. 2816-M. evenings.

Two or 3 rooms, for working couple. Mon. 2617-J.

For young couple, complete facilities. Glen. 1877, 105 Ring 3, days.

Four or 5 rooms, or house, furnished or unfurnished, for veteran and wife, both employed. Cul. 5182-R.

Four or 5 rooms, 2 bedrooms, heated, by family of 4 adults, in city or suburbs, before May 1, references. Glen. 6786-R after 6:30.

APARTMENTS WANTED TO RENT

Two or 3 rooms, 2 adults, both working, references, urgent. Mrs. Speers, Main 7459.

3-4 rooms, unfurnished, urgently needed by veteran and wife, preferably on East side of city. St. 4465-L.

2-bedroom apartment, furnished, by 3 business girls. CW KODAKERY.

Quiet couple urgently need 1 or 2 bedrooms in desirable location. Cul. 160-R after 6 p.m.

Unfurnished, 3 or 4 rooms, convenient to KP, employed couple. Mr. Merritt, Char. 1902-R.

Unfurnished, 3 or 4 rooms, middle-aged couple. 1533 Culver Rd., Cul. 1178-J.

Unfurnished, by May 1, for H-E engineer and wife. Glen. 6802-M.

Unfurnished, two or three rooms, for young married couple, both working. Glen. 3761-J after 6 p.m.

With kitchen and bedroom. P.O. Box 153, Rochester 1, N.Y.

FOR RENT

FLAT—In KP section, or swap for other accommodations by couple with 2 children. Glen. 2932-M.

HOUSE—Or will trade 7-room single house in Buffalo for home or flat in city or suburbs. J. Foulon, Main 2791, ext. 57. Or Buffalo phone HU7770.

HOUSE—To share with 2 girls. 163 Earl St. off Genesee.

ROOM—Breakfast, gentlemen preferred, convenient to bus lines. Mon. 2548-J evenings.

ROOM—For gentleman. 148 Driving Park Ave., evenings only.

ROOM—For 3 gentlemen, \$4 each. Rutgers St., Mon. 7143.

ROOM—Gentleman preferred. Mon. 2948-W.

ROOM—Heated, suitable for 2, 5 minute walk from KP. 97 Avis St., Sat. or Sun. after 10 a.m.

ROOM—Large single, in private home, Lake Ave., near Driving Pk. Glen. 5731 after 6 p.m.

ROOM—Newly furnished and decorated, five minutes from KP, gentleman preferred. Glen. 820-R.

ROOM—Furnished, double bed, prefer working couple. 54 Hull St., Cul. 4619-W.

ROOM—Studio bedroom, board, working couple or 2 business girls, references. Char. 1467-M.

ROOM—To share with 2 young girls, completely furnished for 3, your share \$8 a wk. Glen. 366-R.

ROOM—Twin beds, 2 gentlemen or couple preferred. 420 Pullman Ave.

ROOM—With private bath, gentleman preferred. 406 Clay Ave.

ROOM—With private bath. 287 Westminster Rd., Mon. 30-R.

ROOMS—Two bedrooms. 91 Arnett Blvd., Gen. 5322-R.

ROOMS—Two single, one with double bed, \$6; one with single bed, \$5, breakfast and dinner optional. Mrs. Archambault, 473 Meigs St., Mon. 696-M.

WANTED TO RENT

COTTAGE—First 2 weeks in July, for 4 people. Gen. 3503-R.

COTTAGE—Vicinity Crescent Beach or Grand View, 3 sleeping rooms, for months of July and August. Cul. 4334-R after 6:30 p.m. or Sundays.

COTTAGE—Summer, within commuting distance of H-E, must have refrigerator and electricity. July, August or season. 67 Evergreen St.

FLAT—Preferably in suburbs, 4 rooms, unfurnished, for refined couple. J. Lundberg, H-E Ext. 453.

HOUSE—Or lower flat, for family of 3. Will take care of your property and pay year's rent in advance. Glen. 355-M.

HOUSE—References. Main 4350-M.

HOUSE—Four adults need 3 bedrooms, unfurnished, references. Glen. 402-W, or write Connie Howard, 51 Parkdale Terr.

HOUSE—Flat or apartment, before Apr. 15, by research chemist, wife and baby, references. Glen. 4238-W.

HOUSE—Four bedrooms, or 2-bedroom apartment. Mon. 5570-R.

HOUSE—Preferably outside city, small, by young couple and baby, will do remodeling and maintenance free by first-class carpenter. Bernie, Glen. 4765.

HOUSE—Six room, oil heat, will pay \$65-\$70 a month. Main 5325-M.

HOUSE—Small, unfurnished, or apartment for young couple. Mr. Searle, Glen. 1986-M after 6 p.m.

LIVING QUARTERS—By veteran and wife forced to move April 1, both employed, urgent. Gen. 6305 after 7 p.m.

SWAPS

APARTMENT—Veteran and wife will exchange 3-room apartment: For 4-room modern flat or apartment at moderate rate. Gen. 1069-R on Friday from 6:30 to 9:30 p.m.

BINOCULAR—7x50 Bausch & Lomb; For Precision A enlarger or equivalent. Char. 1352-W.

BUNGALOW—New, 5-room, 10 minutes walk from Kodak Park; For home in St. Paul Blvd., Summerville area. Glen. 7400-R.

CAR RADIO—For box trailer. Glen. 5985-J.

LOST AND FOUND

FOUND—Small earring, colored stones; and pair man's maroon wool gloves. Inquire KODAKERY, KP.

LOST—Earring, at H-E near canteen. H-E Lost and Found Dept.

LOST—Zippo cigarette lighter with initials JWC in Bldg. 28 cafeteria. Return KODAKERY, KP.

KP Ice Skater Eyes Olympics; Plays Pro Ball

Don't be too surprised if a Kodak Park speed skater represents the United States in the 1952 Olympics. For Bert Smith, Olympics skating scout, rates the Park's Paul Callipare a contender for international honors. Paul caught the expert's eye while taking part in the Eastern States meet at Saratoga Springs last month. Skating against 34 crack bladesmen, including three former Olympic stars, he was one of eight to qualify for the finals. Although he fell in the 440- and 880-yard events, Paul managed to place fourth in the mile and fifth in the three-mile races.



Paul Callipare

At the Great Lakes meet held in Jamestown, N.Y., Feb. 9, his brother, Anthony, of Camera Works, copped the crown, with Paul taking second. Both boys will compete in an indoor event in New York City on Mar. 16. They have also accepted an invitation to represent Western New York next New Year's Day at the North American championships in Detroit.

Meanwhile, to keep those racing legs in top condition, Paul has signed a contract to play professional baseball with a Boston Brave farm club. He will report in Bloomingdale, N.J., Apr. 3.

112 in KP Girls' Tourney

A field of 112 keglerettes will compete for the C. K. Flint Trophy Saturday, Mar. 1, when the KPAA Women's Singles Handicap Tournament is run off at Ridge Hall. Defending champion will be Evelyn Long, who rolled a 536 scratch and won the tournament last year with a 606, including handicap.



Shirley Lankford

KP Keglerette Rolls 244 Solo

Eight straight strikes enabled Shirley Lankford to fashion a booming 244 game last week in the KPAA Girls' 12-Team League, establishing a new season high for Kodak's keglerettes.

Shirley thus erased the previous record solo, a 241 posted in Industrial League competition by Louise Christopher, also of Kodak Park. She started off with a miss, then added three spares before starting her string of strikes. Shirley, who bowls with the Kodoloids, finished with a 485 series.

League leaders last week:

Shirley Lankford, KPAA 12-Team	244
Madeline Lamb, KPAA 16-Team	216
Thelma Ryan, CW Friday	186
Gert Ludian, H-E Girls	178
Ann Byrne, KO Girls	175

PIN STANDINGS

E&M Field Division			
	W	L	
Machine	44	28	Electric 36 36
Tinsmith	40	32	Engineer 34 38
Pipe	38	34	Chemical 32 40
Millwright	37	35	Carpenter 27 45

KPAA Girls' 12-Team			
	W	L	
Emp. Rec.	43	17	Indus. Rel. 28 32
E&M Plan.	40	20	F.E. Ctg. 25 35
Kodoloid	40	20	Stores 25 35
Cine Proc.	38	22	Accounting 25 35
Paper Service	32	28	Bldg. 42 18 42
Color Print	29	31	Bldg. 30 17 43

KPAA Thursday A			
	W	L	
Chemical	41	19	Sundries 29 31
Bldg. 42	40	20	Bldg. 29 29 31
P&S	38	22	Testing 28 32
Yard	36	24	Sens. Pap. Pkg. 25 35
F.D. 4	34	26	Tool Room 23 37
Kodacolor	34	26	Cinés 23 37
N.C.P.	30	30	Mach. Design 21 39
Steel Fab.	29	31	Bldg. 10 20 40

KPAA Girls' 16-Team			
	W	L	
Fin. Film	52	17	Printing 37 32
Kodak 5	51	18	Film Emul. 30 39
Film Pl.&Rec.	42	17	Plate 28 41
Spooling	40	29	Sensitometry 28 41
Kodakery	39	30	Film Dev. 26 43
Cine Proc.	39	30	Bldg. 48 26 43
Box 2	38	31	Box 1 22 47
Syn. Chem.	37	32	Testing 17 52

CW Friday Avery			
	W	L	
Dept. 10	25	11	Cine Mach. 17 19
Access. Mach.	25	11	Recordak 15 21
Airgraph	18	18	Duplex 14 22
Proj. Print.	18	18	Velox 12 24

CW Office			
	W	L	
Brownies	35	22	Bantams 26 31
Kodascopes	34	23	Retinas 25 32
Recomars	32	25	Enlargers 24 33
Recordaks	30	27	Cinés 22 35

CW Engineering			
	W	L	
Reflex	39	24	Shutters 31 32
Magazines	39	24	Kodascopes 30 33
Medalists	37	26	Monitors 22 41
Cinés	33	30	Ektras 21 42

KO Girls			
	W	L	
Brownies	34	29	Bantams 33 30
Bulls-Eyes	34	29	Vollandas 32 31
Retinas	33	30	Kodaks 30 33
Bullets	33	30	Cinés 23 40

CW Saturday			
	W	L	
Jiffys	44	31	Enlargers 37 38
Recordaks	44	31	Brownies 37 38
Monitors	40	35	Reflex 36 39
Bantams	39	36	Ektras 36 39
Hawk-Eyes	38	37	Cinés 35 40
Magazines	38	37	Medalists 33 42
Kodascopes	37	38	Vigilants 31 44

H-E Saturday Shift			
	W	L	
Benchw'mers	50	19	Tool Room 33 36
Grinders	41	28	Tool Grinders 30 39
Blockers	39	30	Blanchards 30 39
Lesoks	38	31	Shell Gang 28 41
Polishers	37	32	Inspectors 29 40
Royals	36	33	High Speed 28 41
Dept. 17	36	33	Dept. 59 27 42

KO National			
	W	L	
Bums	36	27	Braves 31 32
Pirates	34	29	Reds 31 32
Cubs	32	31	Tigers 30 33
Giants	32	31	Indians 29 34
Cards	32	31	Yanks 28 35

H-E Webber			
	W	L	
Ektras	42	24	Planning 32 34
Estimating	41	25	Inst. Makers 32 34
War.-Swasey	39	37	Shellers 31 35
Recordak	38	28	Assemblers 30 36
Production	35	31	Swiss Navy 29 37
Metals	35	31	Blockers 23 43
Dept. 82	34	32	Hendeyes 21 45
Purchasing	32	34	

Keglers Clash in Interplant Mar. 8

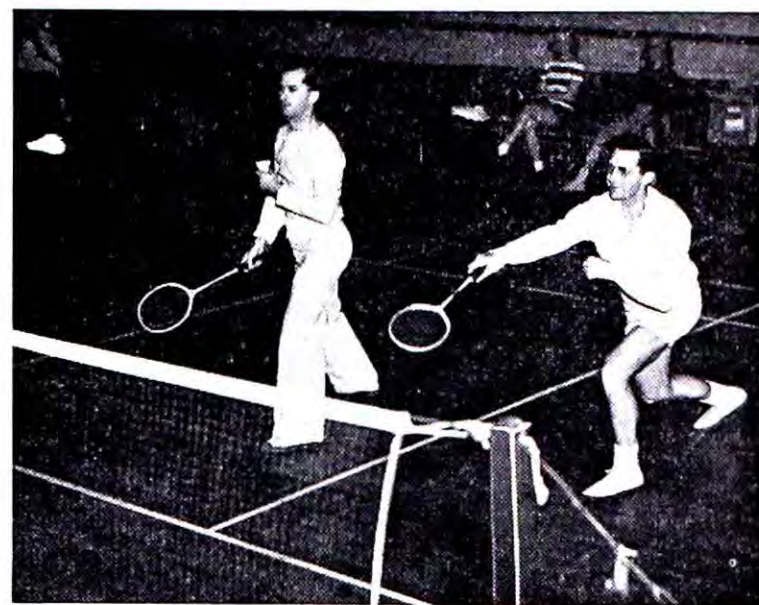
Park Teams Defend Lovejoy, Sulzer Trophies

Kodak Park keggers will be defending champions in both men's and women's divisions when the 12th annual Interplant Bowling Tournament is run off Saturday, Mar. 8, at Mink's Bowling Hall.

In addition to the team events there again will be men's and women's singles and doubles competition. Last year the Kaypee men wrested the Lovejoy trophy from Hawk-Eye, 1945 champion, by posting a 3013 score and 115 points, under the Petersen system. Kodak Park women, winning the title for the fourth time, crayed a 2534, including handicap, to take the Sulzer trophy away from Hawk-Eye.

Personnel of the 1947 plant and office teams will be announced next week, according to Harry Irwin, KORC director. Serving on the tournament committee with Irwin are Cap Carroll, HEAA director; Johnny Doyle, CWRC head; Executive Secretary C. A. Benson and Joe Minella of the KPAA, and Barney Pilot, KORC. Past winners:

Men		Women	
1936—Camera Wks.	1940—Camera Wks.	1941—Kodak Park	
1937—Hawk-Eye	1941—Kodak Park	1942—Kodak Park	
1938—Hawk-Eye	1942—Kodak Park	1943—Kodak Park	
1939—Hawk-Eye	1943—Kodak Park	1944—Kodak Office	
1940—Kodak Park	1944—Kodak Office	1945—Hawk-Eye	
1941—Camera Wks.	1945—Hawk-Eye	1946—Kodak Park	
1942—Camera Wks.	1946—Kodak Park		
1943—Kodak Office			
1944—Kodak Office			
1945—Hawk-Eye			
1946—Kodak Park			



Tournament Warmup—The doubles team of Phil Michlin and Frank Comstock of Hawk-Eye, among Kodak Badminton Club's top-seeded entrants, engages in a practice match in the State Street auditorium in preparation for impending tournament. Michlin, foreground, is shown returning bird. Third annual KORC Badminton Tournament is slated for Mar. 8-9 in auditorium.

Scott Hits 696 in CW League; H-E Kegler Rolls 735 Outside

Walt Scott smashed out a record 696 series last week to lead the pace-setting Bantams to three more victories in the Camera Works Wednesday Night wheel and notch the highest three-game total of the season in Kodak circles.

The previous high individual series was the 695 turned in recently by Johnny Schilling in the KPAA Thursday A League. In outside competition, Sam Kreason, H-E hotshot, plastered the pins for a fat 735 series in the East Side Bowling League Feb. 21. League leaders last week:

High Individual Single			
	W	L	
Everett Poppink, KP Film Emul.	266		
Don Wolz, KPAA Wed. B-8	258		
Leo Gertin, CW Supervisors	246		
George Horn, KPAA Thurs. A	245		
Walt Scott, CW Wed. Night	245		
Ed Laskowski, CW Fri. Webber	241		
Milt Murningham, KPAA Thurs. B	241		
Norm Heberger, H-E Ridge	237		
Shirley Smith, KP Paper Service	237		
Albert Kaiser, E&M Field Div.	233		
Bill Statler, KO American	224		
Bill Burandt, H-E Dept. 29 Shift	220		
Joe Scheiblaue, H-E Webber	216		
Archie Latoy, H-E Sat. Shift	214		
Chet Maynard, KO American	213		
Al Klein, KO Repair	211		

High Individual Series			
	W	L	
Walt Scott, CW Wed. Night	696		
Tony Stavalone, H-E Dept. 29 Shift	658		
Everett Poppink, KP Film Emul.	630		
Joe Polatas, KPAA Thurs. B	629		
Clayt Benson, KPAA Thurs. A	625		
Eddie Greenauer, H-E Webber	611		
Ralph Meyer, CW Supervisors	607		
Norm Heberger, H-E Ridge	603		

RESULTS LAST WEEK

Film Emulsion 55, Bldg. 58 28; Bldg. 12 32; Engineering 31; Bldg. 14 31; Research Lab 19; Bldg. 58 2, Syn. Chem. 0 (forfeit); Emcos 31; Power 29; Bldg. 12 2, Syn. Chem. 0 (forfeit).			
---	--	--	--



Post High-Team Scores—The Finished Film five of the KPAA 16-Team circuit gave a finished performance Feb. 17, hammering the Ridge Hall lanes for new women's season high singles and series marks. Rolling a 2505 total, including a 994 game, the gals eclipsed their own records of 2442 and 879, respectively. Members of the team, reading from left, are Madeline Lamb, Charlotte Rehberg, Edna Usselman, Virginia Doane, Edith Kelley.

Soler Bags 24 In Dusty Fray

Felix Soler, Hawk-Eye's crack basket sniper, singled the cords for 24 points Monday night to boost his season's total to 105.

Despite Soler's spree, and a 17-point contribution by Jack Kearns, the Hawks dropped a 63-61 verdict to Rochester Buttons. On the same Major Industrial card Kodak Park thumped Justowriter, 56-33. Guido Troiano and Jack Ellison, with 17 and 10 points, respectively, paced the Kaypees.

Camera Works rallied to top Rochester Products, 50-43, Jan. 20. With Ed Malolepszy dumping in 16 points, and Howie Long contributing 10, the CW quint erased a 22-17 half-time deficit to notch its fifth victory and advance into a second-place tie.

Kodak's leading scorers in Dusty competition follow:

Player	G	Fg	Ft	Tp
Felix Soler, H-E	6	37	31	105
Jack Ellison, KP	8	35	14	84
Stan Lojek, KP	8	25	24	74
Harry Horn, KP	8	26	16	68
Ed Malolepszy, CW	6	23	16	62
Ralph Azzarone, H-E	8	35	16	58
Bob Keegan, CW	6	18	15	51
Ralph Taccone, KP	8	22	6	50

NATIONAL			
	W	L	
Kodak Park	7	1	Graflex 7 0
Balcos	5	2	Roch. Button 6 2
Camera Works	5	2	Ritter 5 2
Delco	3	4	Hawk-Eye 2 6
Roch. Prod.	2	5	Taylor 2 5
Justowriter	0	8	DuPont 0 7

(Does not include games of Feb. 26.)

SCHEDULE FOR WEEK
Friday, Feb. 28 — Ritter vs. Taylor; Products vs. Delco.
Monday, Mar. 3 — Products vs. Justowriter; DuPont vs. Roch. Button.
Wednesday, Mar. 5 — Taylor vs. Hawk-Eye, 7:45 p.m.; Camera Works vs. Kodak Park, 9 p.m. at Jefferson.

EK Girls Advance In T-U Pin Classic

Gert Ludian, Hawk-Eye keglerette, posted a 594, and Gwen Boynton of Kodak Park rolled 590 in last Sunday's second-round T-U Classic competition.

Other Kodakers advancing to the semifinals were Frances Laging (543), Zoe Bickel (535), Edith Kelley (534), Mary Clarke (573), Helen Carr (542), all of Kodak Park; Mary Staffieri (522), Maurine Smith (570) and Betty Heisinger (536) of Hawk-Eye; Lois DeWilde (555) and Mary Goy (532), Kodak Office.

SEC. 562 P. L. & R.
U. S. Postage
PAID
Permit 6
Rochester, N. Y.

KODAKERY
EASTMAN KODAK COMPANY
Rochester 4, N. Y.
Return Postage Guaranteed

KP