

M.B.E. Arouses Curiosity— Here's Story Behind Initials

Sydney B. Farman, M. B. E., of Kodak Ltd., was a visitor at Kodak Office the other day.

That might be an item suitable for the personal column but for the fact that there's an interesting story connected with the M. B. E. tacked on the end of the Englishman's name.

The M. B. E. means Medal of the British Empire. It was presented to Farman personally by King George VI in Buckingham Palace and the document accompanying it was signed by the Dowager Queen Mary.

But the beginning of the story goes back to Christmastime of 1940—about the time when the Luftwaffe was hammering the "tight little isle" from the air.

RAF's Problem

Farman, now assistant superintendent of the Wembley Park factory of Kodak Ltd., was called to the office of Donald McMaster, then at Harrow and now vice-president of the Company here.

The Royal Air Force had a problem and they asked Kodak Ltd. to help solve it. Their aerial cameras were inadequate for the job at hand since they produced only 4 by 5 prints. Larger ones were required to check the accuracy of bombing forays of the RAF against

the foe's industrial plants supplying the German bombers.

Farman's knowledge of aerial cameras, gained while associated with another firm in England, made him the logical man for the job in McMaster's opinion, so he was given the task.

"We had to start from scratch," said Farman. "A factory had to be found and the people to operate it."

The job was doubly difficult since few trained people were available. Many of them had to be trained on the job.

"Those people really did the job, for they worked night and day to supply the camera needed," said Farman who minimized his own part in the project.

Within the year some 800 cameras, the housings mostly made from castings, were supplied to the RAF. Equipped with 20- and 36-inch lenses, they produced 7 by 9 prints which could be blown up for study by the aerial photographic experts to tell the RAF how well they had smashed their targets.

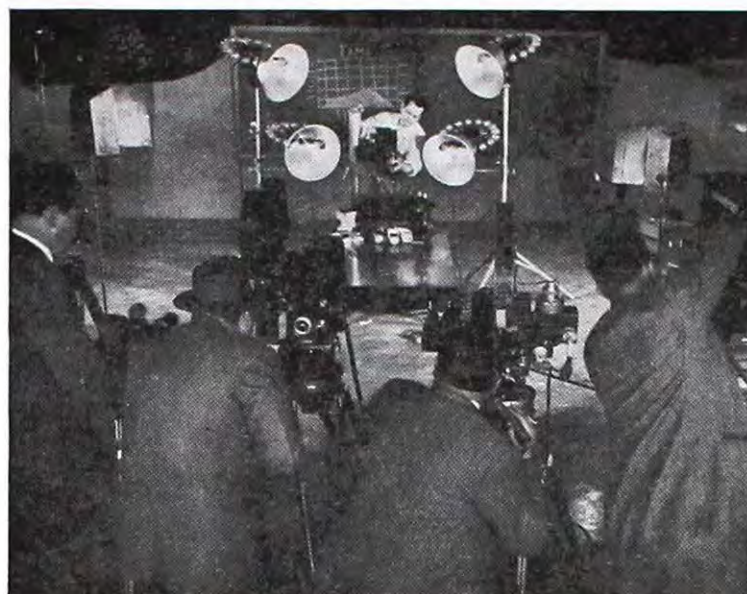
The cameras, produced under difficult circumstances, filled in the breach until the later precision aerial cameras could be produced.

So well was the project carried out that the name of Sidney B. Farman appeared on the King's New Year's list of honors on Jan. 1, 1942. He was summoned to Buckingham Palace with others for the presentation ceremonies in which the King gave the medals with words of commendation.

"I feel that my associates in the project really earned the honor," said Farman, "but it must be presented to an individual and I was their representative."

Farman is here to study methods of film spool manufacture at Kodak Park and he has conferred

(Continued on Page 4)



Flytography — Newsreel men were on hand when Henry M. Lester shot high-speed motion pictures of the flight of a fly at 3000 frames a second with his Eastman High-Speed Camera, and moviegoers will soon be seeing the unusual event on the screen. KODAKERY readers will recall that this publication had a story in its Oct. 30 issue on Lester's high-speed studies of the fly, in which he discovered some outstanding and hitherto unknown principles which may be adapted to aircraft and industrial machines.

French Striving to Recover, Kodak-Pathé Aide Declares

"France is working and working hard," declares Harold Ritter of the Kodak-Pathé staff. He returned recently to the States from Paris where he had been since 1945. It was a short stay here, however, for he is sailing again this week for France.

"Everyone asks me: 'Are the French helping themselves back to recovery or are they going to need permanent help?'" he continued.

"Emphatically yes, they need help now," and "emphatically no, they won't continue to need help from America in the long run."

He believes they would be almost back on their feet by now except for an extraordinary set of circumstances. He has great confidence in France and says any money loaned will be well spent by the French.

Loyal People

For an example of their working, he pointed to Kodak-Pathé's Sunday shift which reported almost 100 per cent on the job during the transit stoppage. This was true all over Paris, he said. People made terrific efforts, coming on bikes, trucks and even walking.

"Not only is Kodak-Pathé operating at better than prewar efficiency, many companies are. One large concern marks its efficiency at 115 per cent of its prewar rate, and this is on hungry stomachs and in cold rooms. French production generally, whenever coal is available, is at prewar level."

Bad weather is the principal cause for France's needing help today, he continued. The wheat was ruined by the winter freeze, and the summer drought withered most of the other crops. Ponds, which had always had water, dried up.

Dust Brings Disease

"The fine dust always in the air of bombed cities is causing respiratory diseases. This is aggravated by the housing shortage. Approximately 1,200,000 dwellings were demolished in the bombings."

A manpower shortage has resulted, Ritter added, not only from the loss of life in World War II but also dating to World War I.

"These factors, together with a lack of freight trains and scarcity of gasoline which necessarily is

(Continued on Page 4)

PSA Hears High-Speed Photo Talk

N.Y. Expert Discusses Lighting Techniques

New photographic techniques that helped to produce unexcelled color pictures of insects were discussed by Henry M. Lester, high-speed camera expert of New York City.

Here last week to address the Rochester Technical Section of the Photographic Society of America, Lester also told of the methods which he employed in photographing a drone fly. These experiments with the fly, that disclosed gyroscopic principles of the insect, gained nationwide publicity.

Lester worked with Dr. Harold E. Edgerton of MIT and Frank Carlson of GE, chairman of the technical section of PSA, in developing the lighting system used to obtain the insect photos. The pictures are considered without peer in quality and definition.

Fill Entire Frame

This light source used by Lester, expert with the Eastman High-Speed Camera, Type III, produced the color shots in which the insect fills the entire frame. The extreme closeups were possible because the special system produces a lag in the firing of the lights. Previously the insects were destroyed by heat of the lights. In Lester's pictures, through use of his special techniques a wasp, for example, is shown so large that the head and shoulders practically fill the frame. Experts at the meeting here agreed that the clarity is superb.

Lester also presented a color film of the opening and decay of a yellow rose, showing in about two minutes the unfolding and eventual death of the bloom during a week's time. Automatic controls were used to actuate the lights for the pictures. They were taken every two minutes of the night and day during the week.



Harold Ritter

Helpful Harry Catherall Retires After Half-Century with Kodak Ltd.

It was way back in the "good old days"—in 1897 to be exact—when Kodak Limited was still in Oxford Street, that Harry Catherall joined the Company. And now, after 50 years of service, he has retired with a record of service spanning many difficult periods of exacting work.

He leaves with the best wishes of his friends and colleagues at Kingsway and numbers of people outside the organization with whom he came in contact in the course of his work. He will be remembered, too, by members from Kodak Houses overseas and other visitors from across the world who used to come to him to unravel problems of travel permits, passes and application forms.

Joined Army in '17

Harry was away from the Company in World War I. He joined the Army in 1917, but was invalided out after being wounded the following year. From then on until 1933, he was in charge of Kodak's retail shops in London, his next appointment being assistant to S. Loveday in the Company's Government Liaison Dept.

(Continued on Page 4)



Harry Catherall

EK Safety Score

Here is the 10th week's standing of 18 Kodak units in the 13-week safety campaign:

KP Roll Coating.....	99%
KP Chemical Plant.....	99%
KP Film Emul. Coating..	97%
KP Film Emul. Mfg.....	97%
KP Yard Dept.....	97%
KP Cine Processing.....	100%
KP Paper Div.....	98%
KP E&M-Eng. and Stores	100%
KP Sens. Pap. Pkg.....	99%
KP Fin. Film & Sundries	97%
KP Service Depts.....	100%
Kodak Park Gen.....	95%
KP E&M Shops.....	100%
KP E&M Field Div.....	93%
Kodak Office.....	100%
Camera Works.....	98%
Hawk-Eye.....	100%
Navy Ordnance Div.....	96%



BUCKINGHAM PALACE

13th November, 1947.

Sir,

The Princess Elizabeth desires me to say that Her Royal Highness will most gladly accept the 16 m.m. Cine-Kodak and projector which The Kodak Organization so kindly offer as a Wedding Present. Her Royal Highness is, in fact, being given a Camera and projector, but it is of a much larger kind and she will find a 16 m.m. Camera of the kind you describe exceedingly welcome.

Yours truly,

John Cornwell

Private Secretary to
The Princess Elizabeth.

H.S. Carpenter Esq.,
Kodak House,
Kingsway,
London, W.C.2.

Princess Accepts — This is the letter sent to Kodak Ltd., in answer to the offer of a 16-mm. Ciné-Kodak and projector as a wedding gift. The Ciné and projector were presented by Kodak Ltd., in behalf of and "with sincere good wishes from men and women in Kodak organizations the world over."

First Workshop Draws Producers Of 16-mm. Films to Kansas City



At Work At Workshop — John Maynard of J. E. Brulatour, Inc., distributor of Kodak's professional motion picture film; Robert Corbin, assistant manager of Kodak's Motion Picture Film Dept., and Kenneth Edwards, Kodak adviser on nontheatrical films, from left, take notes at a demonstration-discussion at the Workshop, sponsored recently by the Calvin Co.

A unique motion picture production Workshop recently brought together for the first time those engaged and interested in the production of educational, religious and commercial 16-mm. films.

The Calvin Co., producers of such films, sponsored the four-day Workshop in its studio in Kansas City, Mo., for 135 of its customers and competitor producers.

Kenneth Edwards, Kodak adviser on nontheatrical films, and Robert Corbin, assistant manager of the Company's Motion Picture Film Dept., attended.

Practicing what it preaches, the Calvin Co. used many visual aids to illustrate its program. First on its schedule was a demonstration of the minimum equipment required for production, accompanied by displays on a number of the company's actual sets.

Film Outline Discussed

Preparation of a film outline, examples of script format and discussion of purpose were detailed.

From there, the function of photography came to the fore, hitting on such topics as how to tell a story with pictures, and common errors in writing, directing, shooting and editing.

The Calvin Co., itself, shoots only Kodachrome, even if the customer desires a black-and-white film. It prefers to make a black-and-white copy from the color original. It reasons that when the customer sees both, he will choose the color film.

Editing tools and technique which have been found successful were demonstrated.

The "how" of preparing master

EK Changes Credit Setup

The Credit Dept. at KO has consolidated Kodak customers' accounts and is now handling all accounts receivable including those of KP's Color Print Service.

Formerly the Print Service handled its own, which meant that most photographic dealers had two accounts with Kodak.

More Efficient

Confusion as to where to pay the two bills has now been eliminated by the consolidation. Billing is still done at the Print Service office, copies of the bills then being sent to KO for posting to accounts receivable.

Several girls have been transferred from KP to help handle this new Credit work. Eleanor Waterbury came to KO in the summer, and Terry Daansen, Annabelle Young, Clara Alger, Jean Girard, Jacqueline Mahar and Georgina Austen have moved to State Street.

A get-acquainted party was held for them and other new Credit members by the department at the Walz-Krenzer clubhouse Dec. 4.

scripts, the final written form revised for recording, was next on the schedule. Main rule emphasized is that the narrative must only supplement the photography—the pictures must tell the story.

Next logical step was sound recording and rerecording with a discussion of how to appraise sound tracks and the integration of music into scripts. These were of great interest to the group since so many more 16-mm. films now are sound films.

The Workshop concluded with a detailed session on major problems of utilization and distribution of nontheatrical films.



T. M. Reg. U.S. Pat. Office
Test your knowledge with the questions below. Grade 10 for each question. If you score 60 you're "super"; 50—you are still remarkable; 40—not bad at all; 30—time to brush up!

(Answers on Page 4)

- What gives that bluish color to prints often seen in photographic exhibitions?
 - The exposure was made with a blue filter over the lens.
 - A blue toner was used in processing the print.
 - Age sometimes causes the blue tone.
- What is the approximate amount of the Wage Dividend to be paid in March?

\$5,265,032	\$8,104,329	\$11,650,000
-------------	-------------	--------------
- How is a glossy finish produced on prints?
 - Through use of a glossy type of paper and drying on a ferrotype tin.
 - The print is buffed and polished with a soft brush in the drying process.
 - Air streams are turned on the wet print to both dry it and give the glossy finish.
- The name of the metallic yarn made of aluminum and Kodapak is:

Kodalum	Lurex	Lumiyarn
---------	-------	----------
- What is the name of the book published by Kodak which tells the amateur how to make good movies?
 - How to Make Good Movies.
 - Make Your Home a Movie Studio.
 - Shooting Stars at Home.
- Name the Kodak bowler who rolled a 299 game recently.

Lloyd Boyle	Howie Bolles	H. E. Myst
-------------	--------------	------------

Photo Patter

Begin 'Shooting' at Home To Get Good Photographs

When it comes to finding subject matter most picture takers are perennial "I wish I was-ers." They wish they were in Bali—Hong Kong; think of the pictures I could get there! And just as their best friends supposedly won't tell them certain other things, nobody ever seems to take the time to point out that, like charity, good pictures begin at home.

Sure, if those photographers could get to Bali or Hong Kong they could make some fine pictures. Anybody could, because he'd be wide awake for every picture opportunity, evaluating everything he saw for its pictorial possibilities. But if that same amount of energy and ambition went into evaluating possible snapshot subjects around home an equal number of fine pictures would result.

Take today's illustration, for example. It's a nice little snapshot—but it could have been one of a series. Whenever a dog like this gets a bath there are plenty of picture possibilities from the moment he eyes the tub with utter distaste until he showers water in every direction as he shakes himself dry. Closeups and medium shots could be varied to give pictorial variety and interest, and an

excellent picture story could be built around this simple homey act.

Another picture story could be built around parties and picnics in which the family is participating. And there are good shots to be made of family members at work about the house, street scenes in your neighborhood, closeups of interesting little objects and details normally overlooked, and portraits of your friends and neighbors.

Study Illustrations

It might pay you to look through some of the books of photography—and to study the illustrations there. Such books often feature pictures that might have been made in any neighborhood.

Not long ago a photographic commentator remarked that by seeing 100 photographs of any man's work you should be able to tell when the man lived, what conditions were when he was alive, and what his life was like. By picturing life in your home, and in your neighborhood, you can best keep your personal record.



Homey Snapshot — Don't overlook those ordinary activities around home when you're seeking a good snapshot subject. They abound there and provide a record of the family and its customs and habits for future enjoyment.

English Author Visits Kodak En Route to Movie Capital

One of England's top playwrights, Warren Chetham-Strode, visited KO recently on his way to Hollywood to adapt an English novel for MGM. Much of his time here was spent with C. Z. Case, Executive Staff.

His interest in Kodak dates back to his association with Kodak Ltd. where he headed Ciné-Kodak Sales until 1937. In this connection he previously had visited Rochester in 1929 to make arrangements to introduce Kodacolor in England.

Ten of his plays already have been presented in London's theaters, and two of his most successful, "The Guinea Pig" and "The Gleam," now on tour in the English provinces, played concurrently in the capital's theater district.

Filming in England

He also has written the movie scripts of "The Guinea Pig" and another of his plays, "The Doctor," now being filmed in England.

The novel which he plans to adapt for MGM is Mary Renault's "Return to Night."

When he and his wife landed in New York, an incident occurred which normally would happen only in stage plays or novels. Interviewed on the radio about the English theater and his plays, he



Warren Chetham-Strode

received a phone call from James-town, N.Y., a few hours later. The caller was the mother of a G.I. flier who had recuperated from a dunking in the English Channel at Chetham-Strode's home. The lad had visited him several times before going to Singapore with an oil company, but then they had lost track of each other. The mother had heard the broadcast and had spent several hours phoning New York hotels to locate and thank the Englishman.

Human Eye Distinguishes 17,000 Colors

Did you know that your eyes can distinguish over 17,000 distinct colors of equal brightness?

Well, they can, according to the findings of Dr. David L. MacAdam of Kodak's Research Laboratories, who is specializing in research on color vision.

When you get into tints of varying brightness, Dr. MacAdam says, the number of distinguishable differences which the human eye can detect runs into several millions.

On the other hand, only about 500 distinct shades of gray of equal brightness—ranging from black to white—can be detected.

Color Is Big Factor

However, when color is introduced, Dr. MacAdam says, each shade of gray in the middle range of the scale of about 500 shades is expanded up to 17,000 times.

Therefore, to the Kodak research men working for superior reproduction of color in pictures, in the change-over from black-and-white to color photography, they must contend with an increase from 500 to several million distinguishable differences.

The ultra-fine differences in color studies in the laboratory are known to scientists as "distinct chromaticities" which are the distinguishable features of color when brightness is disregarded.

In arriving at his new figure Dr. MacAdam estimates that there are about 250 distinguishable colors in the spectrum, plus 10,000 distinguishable tints of spectral colors and 7000 additional colors, like purple, which do not resemble any spectral colors.

The discharged sergeant walked into the barber shop, draped himself into the barber chair and without a second glance said to the barber, "Shave and a haircut."


The barber picked up the brush and started to lather the face. He stopped in the middle of the operation, a smile of enormous proportions spreading over his face as he reached for the razor.

"Well," he said heartily, "if it isn't my old sergeant!"

It's in the Park

Bucks Bagged by Kodakers...
Harvey Fishes for Headpiece

Charlie Carr, Wage Standards, back from a recent vacation in sunny Florida, tells of meeting many retired Kodak Parkers in the vicinity of Largo and Clearwater. Among them were **Herb Thorpe**, Paper Sensitizing; **George Brackley**, Gelatine, and **Bill Thompson**, Bldg. 29. Also on hand to exchange greetings were **Leon Wadsworth**, Bldg. 32, and **George Weatherill**, Cotton Nitrate, Bldg. 46. Mr. and Mrs. Carr enjoyed a round of dinner parties and fishing trips and left the land of sunshine reluctantly to return to northern ice and snow.



Charlie Carr and the Missus in Florida.

... **Dr. Max Herzberger**, Research Laboratories, has been elected associate editor of the Journal of the Optical Society for a period of six years. ... **Martin Enders**, Yard, who suffered a leg injury recently, will greet his friends in Genesee Hospital for at least two more weeks before returning to his home. ... **Larry Bown**, Power, returned from a recent hunting trip to the Southern Tier with a fox and a seven-point buck. ... Not so fortunate were **Harry Baker** and **Warren Stephens**, Emulsion Coating, who saw but failed to bag their quarry in the rolling hills of New England. ... **Barbara Benson**, a summertime member of the Park, is one of several Rochesterians in the Heidelberg College choir in Tiffin, Ohio. Barbara is the daughter of **Clay Benson**, KPAA executive secretary. ... Those slips of the tongue will cost you money in the Yard Office where the girls have set up a glass bank to catch the coins of unwary members. ... **Bill Kondolf**, Acid Plant, is hosting housewarming sessions at 80 Yarker Ave. ... Venison is on the menu at the home of **Lorne Johns**, Dope Dept., since his recent hunting trip to Canada. ... One good coat of tan deserves another, believes **Anthony Leib**, Acid Plant, who was so impressed by the job "Old Sol" did on **Ernest Forrester** that he decided to take the treatment himself. ... **Ned Bauer**, Bldg. 6, armed with his trusty 35-mm. camera and accompanied by Mrs. Bauer, took in the colorful Army-Navy grid classic in Philadelphia's spacious Municipal Stadium on Nov. 29. ... **Harvey De Young**, 16-mm., lost his hat but not his head on Nov. 28 when high winds carried his top-piece into the reservoir adjoining old Bldg. 28. Harvey promptly commandeered a window pole and fished out the damp chapeau. ... "No competition for KODAKERY" was the way **Correspondent Bob Halpin** of the Garage described an illegible newspaper from Bombay, India, which a friend had passed on to him. No wonder—the sheet was done in Sanskrit, perhaps the oldest language in the world.

A set of china and an electric mixer were among the gifts presented to **Joan McNulty**, Paper Service, by her friends and associates on Nov. 24. Joan was married on Thanksgiving Day. ... A steak dinner was enjoyed recently by members of the Industrial Engineering Dept. at the Hotel DeMay. The party was well handled by master-of-ceremonies **Carl Fessler**, with entertainment based on a nightclub theme directed by **Harold Groh**. Department members furnished a full orchestra as well as various musical and comedy acts. ... **Eunice Sehm**, Bldg. 2, enjoyed a recent vacation in Cleveland. ... Recovering nicely from an operation is **Harry Eustance**, Bldg. 23.

Members of the Kodak Park Major Industrial Softball League team, together with their wives, attended the group's annual party Dec. 3 at Barnard Exempt. ... Back from a three-month trip to Holland is **Abraham Pol**, Paper Mill, who reports a stormy return journey of nine days due to inclement weather. Mr. and Mrs. Pol made a complete tour of the Netherlands and bring back word that bombed-out Rotterdam, where live relatives and friends, is being restored gradually. In spite of many restrictions on food and clothing, Abe found his relatives in good health and spirits, grimly determined to see Holland once more among the prosperous nations of the world.

Engineering Dept. members will hold their first annual Christmas party and dance at Doud Post, Buffalo Road, on Dec. 12. There will be cards, prizes and entertainment, as well as dancing to Jack Nunn's music from 9 to 12, to be followed by a buffet supper. ... **Bill Mulroy**, Emulsion Coating, vacationing near Birdsall, N.Y., recently used one shot to bring down a 225-pound buck. ... When it rains, it pours for **Bob Strong**, Plate Dept., who was rushed to the hospital several weeks ago for an operation. Recovering nicely, he came home on Wednesday morning, Nov. 12. In the afternoon his wife was taken to the hospital where she presented Bob with a baby daughter, Kathy Leigh. At last reports, mother, father and baby were all doing well.

Lecture on Wise Food Buying Slated in
Bldg. 28 by Red Cross Nutrition Expert

"Buy the Wise Way" is the subject for a meeting to be held today, Dec. 11, in the auditorium of old Bldg. 28 beginning at 6:15 p.m. Guest speaker will be Mrs. Ethel L. Marth, nutrition director, Rochester Chapter, American Red Cross, who will give a lecture and answer individual questions from the audience on food buying.

Tips on buying fruits and vegetables, milk and milk products, meat, poultry, fish and eggs will be given, as well as valuable information regarding their cost and nutrition with an eye to meeting the



Ethel Marth

family budget.

Mrs. Marth will point out that high-cost food is not necessarily the most nutritious, the optimum health of the family being contingent upon the wisdom of the buyer.

The meeting is co-sponsored by the KPAA and the Nutrition Department of Kodak Park.

E&M Members Increase Skills
In Special Job Instruction Classes

Less than one year old, the E&M training classes for supplementary job instruction have already drawn close to 200 students, according to latest reports.

The sessions, now held in Bldg. 99, originated last February in old Bldg. 28 and represent a variety of trades. Of the registered students, 70 are pipefitters and 46 are employed in the Machine Shop. Following in order are 21 electricians, 19 Metal Shop members, 17 machine erectors, 11 millwrights and the same number of sheet metal workers.

Other Subjects

At the present time three subjects—shop mathematics, blueprint reading and freehand sketching—make up the curriculum, with shop metallurgy slated to be added soon. To date 69 students have completed the freehand sketching course, while 41 have successfully mastered class requirements in shop mathematics.

The classes are organized so that each group is composed of men following the same trade and the subject material is taught to fit their needs. For example, pipefitters study pipe drawings while electricians devote their full time to interpreting electrical circuits. Because Metal Shop operators perform much of their own layout work, they are encouraged to specialize in geometry.

Twice Weekly

"Experience has shown that men who attend classes twice weekly will learn as much in 20 lessons as will those who report weekly over a 30-week period," says Instructor Gordon J. Skinner of Bldg. 23. Skinner receives a part-time assist in his teaching chores from Clayton DeLong of the John Marshall High School faculty staff.

Typical of the men enrolled in the E&M school program is Tony Lasaponara of the Metal Shop.

KPAA, Camera Club Dues
To Be Deducted Once Yearly

To expedite handling of yearly membership dues deductions for KPAA and Camera Club members, the officers of both organizations have approved a change whereby individual deductions will be made once a year instead of two or four times as heretofore.

It is hoped that this new procedure will, in addition to reducing the number of small deductions for individual members, facilitate the handling of records in both the KPAA and Time Offices and eliminate much clerical work.

The annual deductions, to be made shortly after the first of each year, will be inaugurated Jan. 1. To conform with Payroll Dept. practices, both period and weekly payroll members will be requested to fill out new cards au-

First Smoker
Set Tomorrow

A full house is expected tomorrow evening in the auditorium of old Bldg. 28 when the KPAA stages its first winter smoker of the season.

The show will feature movies and stage entertainment, with Chet Keehley's orchestra providing the music. An excellent vaudeville program has been arranged, including the Timpsons, Southern song and comedy stylists. The occasion also will mark the Park debut of Pat Sanseverino, Roll Coating, in a short program of popular ballads.

Arranged for KPAA members only, the affair gets under way at 8:15, with admittance by membership card and gate pass.



KP Classroom — The E&M training classes are giving new and increasing knowledge about their respective jobs to many KP people. Above, from left, Clayton DeLong, assistant instructor, looks on while Gordon Skinner, right, instructor, demonstrates a special working model to William Muir, student.

After completing studies in freehand sketching and shop mathematics during the past 10 months, Tony now is putting in three hours weekly on blueprint reading.

"I find this instruction particularly useful in my daily job as a welder," says Tony. "There's a deep personal satisfaction to be gained from starting and finishing a job according to exact blueprint specifications."

Equal commendation was voiced by John M. Walsh, general foreman of the Machine Shop, who is convinced that the program reflects the considerable effort spent in making it work. Similar praise was forthcoming from Ed Habel, Metal Shop general foreman, one of the originators of the Company-sponsored project. It has helped

to develop more and better mechanics, he believes, and definitely is playing an important role in carrying out E&M's diversified duties.

Josephs Win
Bridge Honor

Racking up a total of 200.5 match points, Mr. and Mrs. Martin Josephs annexed top honors in the open pair tournament conducted by the KPAA Bridge Club on Oct. 29, Nov. 5 and 12. Finishing second were Mr. and Mrs. Richard Miller with 184.5, one match point in front of the two-some of Charles Vilbrandt and Tom Farrell.

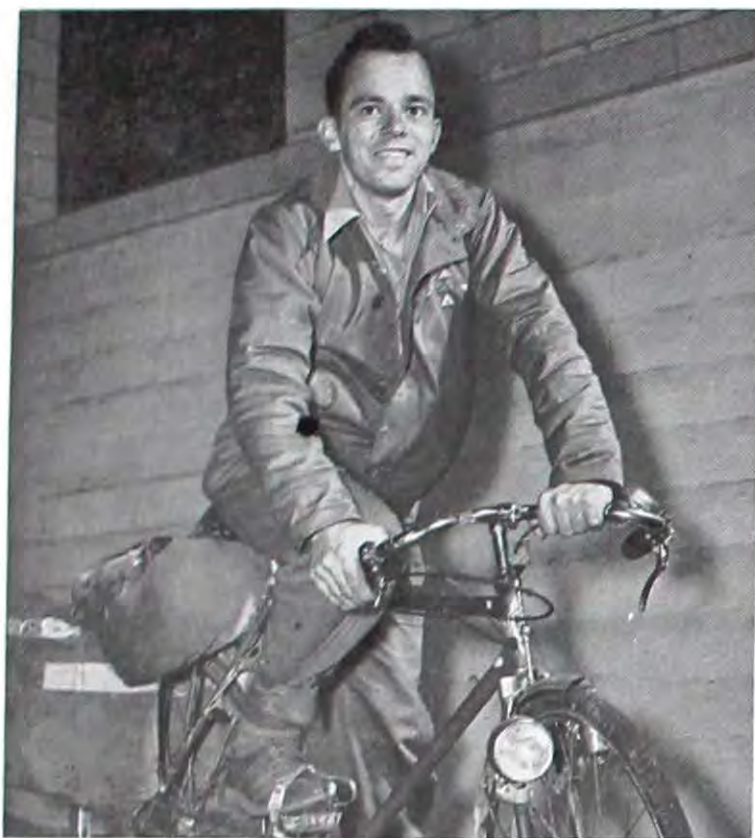
In the consolation flight, Charles Kenyon and Russell Fraize posted a 59.75 average to nose out Scheuring Fierke and Don Bellis who compiled 57.25. Mrs. Foster and Mrs. Pellett third with 56.25.

An individual tournament is now in progress, the results to be announced later. Those wishing to compete in a two-ply event may avail themselves of a special open pair tourney arranged for their benefit. Bob Sanford is handling details for the individual affair.



Pioneers' Guest List — Frances Holihan, treasurer, and Frank Walch, president of the Pioneers' Club, send out invitations to retired 25-year people who will be among the guests of honor at the annual dinner program Wednesday, Dec. 17, in the new cafeteria. Entertainment will be in old Bldg. 28.

Globe-Circling Cyclist Snaps Picture Record of Travels



Eric J. Cooke . . . cycling photog.

"Around the world on a bike" is the aim of London-born Eric J. Cooke. He arrived at Kodak Office recently after traveling over 17,000 miles on his globe-circling journey. Eric has kept a picture record and that was the reason for his stop at KO. He wanted to gather additional information on photography and to check on pictures he had taken.

Cooke carries two Kodaks on his light English bike to keep the running film record of his trip.

Beginning in Holloway, a suburb of London, England, in March 1946, Cooke traveled a scenic route up the Cornish coast. By boat he crossed to Belfast, Ireland, from whence he proceeded down the coast. There he had to wait seven weeks for transportation from Eire to North America. Finally, he gained passage on a freighter to New York City. After a short stay in New York, he headed on his bike for Canada by way of Buffalo.

Weather Alters Plans

He visited Toronto and then went west where he was forced to alter his itinerary. At Detroit he was forced south by cold weather in October. Cooke toured 9000 miles all through the United States. He spent Christmas '46 in Hollywood—cycled up Palomar Mountain, 6000 feet above sea level—climbed 7000 feet up to Crater Lake in Oregon—and traveled 3000 miles through Canada.

Throughout the entire trip, Cooke took more than 1000 shots, over half on 35-mm. Kodachrome. Among these are color shots of the Canadian and Stateside Rockies, the Ozark Mountains in fall and the Pasadena Rose Parade last New Year's Day.

On his way to New York now, Cooke has hopes for a lecture-tour booking on which he plans to cycle as he goes. Then, he will finish cycling "around the world." He will settle in New Zealand.

KODAKERY

Vol. 5, No. 49 December 11, 1947

T. M. Reg. U.S. Pat. Office
Published weekly at Rochester, N. Y.,
with offices at 343 State Street
and printed at Kodak Park.

EDITOR - - - BOB LAWRENCE

Associate editors—Art Wood, Wilmer A. Brown. Division editors—Ike Shynook, Kodak Park; Sidney P. Hines, Camera Works; John Connell, Hawk-Eye; Kaye M. Lechleitner, Kodak Office. Out-of-Rochester editor, Dorothy E. Craig. Staff photographers—Norman Zempel, Jim Park.

for fear of taking food away from the French. To the contrary, tourists are most welcome there, he said. They spend dollars which in turn can be used by the French to buy needed American supplies.

Help for France Seen Temporary

(Continued from Page 1)

imported, have placed the French in a position where they have no alternative but to ask for help.

"Compared to the 18,000 locomotives of prewar days, they now have 5000. Twelve of its largest ports were put out of commission, and it's slow work reconstructing them.

"The French are a proud, intelligent and independent group who will do their best to help themselves.

"It is these same characteristics which will keep them from going Communist," Ritter says. "Each Frenchman is an individualist. Most of them have a stake in their country, for they cherish the plots of land they own."

Stories about being able to buy anything in Paris if you have the money are true, he added, but the majority of the French haven't this money.

Another impression which struck Ritter upon his arrival in the States is that many Americans don't want to travel in France

Xmas Party Slated Dec. 19

Levity will be the keynote of the club's Christmas Party to be held in old Bldg. 28 on Dec. 19. Open to all Monochrome and Color Section members and their families, the evening promises to be one of the gayest get-togethers in the club's history.

The fun to be derived from photography as a hobby will be stressed, and the committee in charge assures everyone that there will be no long-winded harangues on pictorialism and composition, no technical dissertations on methods and practices.

Dispose of Equipment

Beginning at 7:45 p.m. with a disposal of old and obsolete Camera Club equipment, including enlargers, printers, cameras, studio lights, trays and other items, all of them used and some in need of repair, the festivities will get into high gear at 8:30 when the "Honorable Hugh Gibbs Adam," publicized by the committee as the "little-known" critic imported from England for the occasion, takes the stand to point out the extremely poor quality of club members' work. Also on the bill of fare will be Oscar Fulreader, pianist and humorist, presenting "A Night at the Opera"; a "Whatizzit" color slide contest with prizes, several valuable door prizes and dancing. Turkey sandwiches and coffee will be served. No tickets are necessary.

Transparency Deadline Nears

If you haven't already done so, better dig into your color files right away and find four slides to enter in the Color Section's December Transparency Contest. Friday, Dec. 12, is your last chance to enter.

Duplicate cash and ribbon awards will be made to winners in advanced and beginners' classes and the judging, open to members, will start at 7:45 p.m. Monday, Dec. 15, on the 3rd floor, old Bldg. 28, KP. Serving as judges will be Robert Morris, KO, lecturer and instructor in color photography; Clifford Ulp, director of the art department at RIT, and a nationally known painter and color slide maker, and Oscar Westgate, a national exhibitor of color transparencies.

CAMERA CLUB CALENDAR

Dec. 12—Deadline for color slide contest.

Dec. 15—Judging of color slide contest.

Dec. 19—Monochrome and Color Sections' combined Christmas Party.



'Medalist'—Sydney B. Farman, right, of Kodak Ltd., confers with W. S. Vaughn, assistant to the general manager of Kodak. Farman, who received the Medal of the British Empire, has been studying manufacturing methods at Kodak Park.

Kodak Camera Club News

Volume 2

December 11, 1947

Number 10



Joins Club on 13th—Jean Hecker, of the Kodak Camera Club staff, presents membership card to Edward M. Schlosser, KP watchman, who joined the club Nov. 13. The proverbial '13' has figured prominently in Schlosser's life.

'13' Figures Prominently In Life of New Club Member

Thirteen people became members of the Camera Club on Nov. 13. Nothing unusual about that—people join every day. But one of those 13 was Edward M. Schlosser, who divulged to the club's staff members several interesting facts regarding his 13-complex.

Born at 13 Princeton St., Schlosser led a normal life as a youth. He began at Camera Works on Sept. 13, 1912, and bought his first Kodak in 1913. He was called to the service on Feb. 13, 1918, served in the Navy on 13 ships, crossed the Atlantic 13 times, and on June 13 of that same year was washed overboard in a lifeboat with 13 of his crew members.

And Still More!

Returning to Camera Works on Mar. 13, 1919, he transferred 13 years later to Kodak Park on Feb. 13, 1932. He started as a watchman in Bldg. 13 on Route 13 and had 13 keys on his first ring. During World War II, Schlosser served as an auxiliary fireman at Engine House 13 where he votes regularly. His registration number this year was 184 (add up those numbers). The three fires he has reported have been from boxes 94, 76 and 58 (add those too). During the war he collected and distributed 1300 packs of cigarettes to his KP friends.

When he moved into his present home a few years ago on Nov. 13, Schlosser soon discovered that 13 other people on the same street were also employed by Kodak. At the present time, 13 members and relatives of the Schlosser clan are

with the Company.

We don't want to carry this thing too far but Schlosser insists that the only day this year he didn't drive his own car to the plant, he rode in on bus No. 1300 and returned home on No. 1313.

Library Exhibits Winning Snapshots

An exhibit featuring winning prints in the 1947 Newspaper National Snapshot Awards, sponsored by Kodak, opened last week at Rundel Memorial Library and will continue until Jan. 3. The display—containing the 12 major prize winners as well as the 70 winners of \$50 awards—is being sponsored here by the Democrat and Chronicle, one of the 75 participating newspapers.

The exhibit has thus far been booked by 43 of the newspapers represented in the 1947 competition, which was the ninth sponsored by the Company and the first held since the war.

Aide of Kodak Ltd. Ends 50-Year Span

(Continued from Page 1)

When Loveday retired in 1945 after 50 years' service, Catherall took over the department.

Having a fondness for the open air and the country and being a keen gardener, Harry will doubtless spend much time in his Essex garden enjoying his hobby—a hobby which has become an "essential occupation" rather than a leisurely pastime.

A farewell luncheon was given in his honor at the Waldorf Hotel.

M.B.E. Recipient Visits EK Plants

(Continued from Page 1)

with EK people also at other plants in Rochester. These methods soon will be incorporated in production at the comparatively new unit of the Harrow Works but located at Wembley Park, four miles from the main plant.

Landlady—"As a whole, how do you like your room?"

Tenant—"As a hole it's all right but as a room, I don't know."

Let's Get Down to Cases - - -

From cow to camera case is not such a very long distance—at least, not the way it's handled in the Camera Works' Leather Case Dept.!

It may never have occurred to you, as you acquired a new camera case or admired the handsome, richly-glowing leather of one on display in a store, that these, too, are Kodak products. These good-looking, high-quality cases are made in the same plant where cameras they will contain are turned out—in Camera Works. It's a highly specialized department, too, where experts in their lines work with fine leather to produce these photographic accessories.

Cowhide, most commonly used for manufacture of camera cases, straps, etc., is delivered to the plant already tanned and dressed. That's not enough, however; the very first item on that "cow's" agenda is a thorough inspection for satisfactory tanning and fineness of quality.

Each hide as received is really only "half a cow," cut, as it were, along the backbone of the animal. And each hide will be completely used, until only slivers and useless fragments of leather remain as waste.

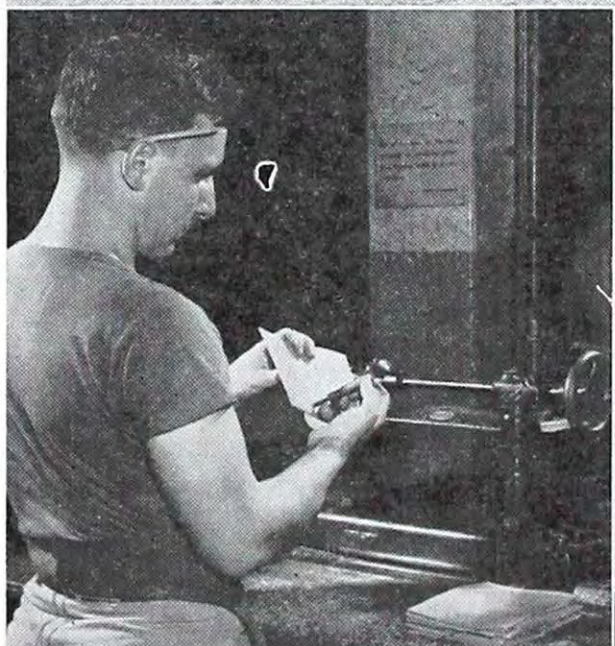
Okayed for use, the hides are sent to the Leather Case Dept., where experts rough-cut the skin into easily handled sections. Then it is cut to size on machines with the use of dies, formed into desired shapes to accommodate different model cameras and the latest styles of fashion. The parts are then carefully sewed or glued together, depending on the use intended, and the case is assembled step by step as pictured on this page.



'Cow in the Nude' — That's what Leather Case Dept. folks at CW call the cowhides which they make into camera cases and accessories. Here Louis Holdrich, who cuts the leather, removes from the rack one of the hides, which come to CW already tanned and dressed. When received, they are first of all inspected for quality by the Chem. Lab and Raw Materials Inspection Dept., before any work is done upon them.



Clicking — Hides are cut into pieces of desired size and shape on clicking machines with dies, as Raymond Matczak is doing above. No part of the hide is wasted, the dies being fitted as closely together as possible; of vital importance is preciseness on the part of the cutter, whose responsibility it is to utilize every bit of the hide.



Skiving — Robert Deutsch splits or "skives" the leather to proper thickness for its purpose, which may be anything from the rich, glossy cover of a case to a simple strap or handle. Here he's measuring a skived piece with a micrometer, to assure accuracy. These pieces are intended for Medalist inserts, and are split to a .060 part of an inch for thickness.



Forming — Cases and inserts must be of the proper shape to hold and protect cameras of different sizes and shapes; already cut to pattern, they are first wet, then inserted in a hydraulic press for forming, as John Bryant is doing above.



Sewing — One of the most exacting parts of case manufacture is the sewing, which must be perfect if the case is to pass inspection. Here Ralph Ronzo is stitching together an insert and a formed piece for the lens mounting of a 35-mm. camera; the two parts are held in place temporarily by tacks during sewing. One skipped stitch would reject the case at inspection.



Inside — The Ciné-Magazine case (completed ones are seen stacked in background) is lined with an attractive, long-wearing cloth which is cut to size and glued in as shown by Lela Engelking, above left. In background, Frances Colombo glues into place small wooden blocks, designed to hold camera and accessories securely in place.



Finishing Touches — Snipping threads, rubbing up the finish and inspection for perfection before a case leaves the department. Here Doris Tangry is checking a group of completed cases for the finish. Those intended for light cameras. At left, Betty Whit-Kodak Reflex. Now the trip from Cow to Case is completed, with more glues leather, cut to size, on wooden box frames: the assistance of a lot of energy, accuracy and careful handling by the members of the Leather Case Dept.

Outside — Cases which will have a heavy weight to support are made differently from othy Tangry is checking a group of completed cases for the finish. Those intended for light cameras. At left, Betty Whit-Kodak Reflex. Now the trip from Cow to Case is completed, with more glues leather, cut to size, on wooden box frames: the assistance of a lot of energy, accuracy and careful handling by the members of the Leather Case Dept.

The Market Place

KODAKERY ads are accepted on a first-come, first-served basis. Department correspondents in each Kodak Division are supplied with ad blanks which, when your ad is typed or printed on them in 25 words or less, are put in the Company mail addressed to "KODAKERY" or handed in to your plant editor. All ads should be received by KODAKERY before 10 a.m., Tuesday, of the week preceding issue. HOME PHONE NUMBERS OR ADDRESSES MUST BE USED IN ADS. KODAKERY reserves the right to refuse ads and to limit the number of words used. Suggested types are: FOR SALE, FOR RENT, WANTED, WANTED TO RENT, LOST AND FOUND, SWAPS, KODAKERY READERS ARE ASKED TO PLACE ADS ONLY FOR THEMSELVES AND HOUSEHOLD—NOT FOR FRIENDS OR RELATIVES. TO DO THIS IS TO DENY SPACE TO THE PEOPLE OF KODAK FOR WHOM THIS SPACE IS RESERVED.

FOR SALE

ACCORDION — 120-bass, 3445 Dewey Ave., Char. 0539-R.
AERO-MAIL EXERCISING TOY—Similar to Irish Mail, 3-6 year old child. Mon. 5342-W.
AIR RIFLE—Red Ryder. Char. 0794-R.
AUTOMATIC DRAFT REGULATOR—Hercules, for warm air furnace or boiler, complete, \$10. Mon. 1768-J.
AUTOMOBILE — 1932 Chevrolet, 4-door, \$150. 31 Fien St.
AUTOMOBILE—1934 Oldsmobile 8 convertible coupe. St. 4595.
AUTOMOBILE—1934 Chevrolet master coupe, \$275. 467 Lake View Terr., Webster.
AUTOMOBILE—1936 Oldsmobile sedan, 312 Lake Ave.
AUTOMOBILE—1936 Plymouth coupe, \$315. Cul. 3892-W.
AUTOMOBILE — 1938 Buick sedan, 8 Valois St. off 1612 North St.
AUTOMOBILE — 1939 Oldsmobile, 60 series, sedan. Glen. 2802-W, after 6 p.m.
AUTOMOBILE — 1941 Buick super. Becker, 48 Radio St., Main 4461, after 6 p.m.
AUTOMOBILE — 1941 Buick coach. Hilton 138-F-14.
AUTOMOBILE — 1941 Chevrolet. Char. 0558-J.
AUTOMOBILE — 1941 Dodge, 2-door. Cul. 0293-R.
BABY CARRIAGE — Folding. Cul. 2703-W.
BABY CARRIAGE — Twin, leatherette. Char. 2328-R.
BABY CRIB — Also nursery chair. Glen. 5381-W.
BABY CRIB — Large, maple, \$15. Glen. 6409-R.
BABY EQUIPMENT — Playpen, porch gate, Taylor Tot, car seat, bathnet, sterilizer and bottles, gym set, scales. Also girl's ice skates, size 10; man's ice skates, size 11. 707 W. Main St.
BABY FURNITURE—Highchair, maple; bathnet; training chair; swing stand; hobby horse. Also G-E hand vacuum. 2504 W. Ridge Rd.
BABY FURNITURE—Maple bed, large size; chifforobe. Glen. 0044-M.
BABY FURNITURE — Small crib; buggy; bathnet; other pieces. 431 Glenwood Ave.
BABY STROLLER — \$8. Also Silvertone radio, \$10. Glen. 1203-J.
BABY STROLLER—Parkway, \$4. Glen. 7483.
BAMBOO ROD—Split, ext. tip. Glen. 0688-W, after 5 p.m.
BANJO — Mandolin, with leather case. Char. 3173-W evenings.
BASSINET — On wheels. Glen. 0480-J.
BATHTUB — White, 5 ft. Cul. 5591 after 6 p.m.
BED — Maple, single, \$20. Also prewar baby sled, \$4. Cul. 6218-J.
BED—Metal, springs. Glen. 0539-R.
BED—Windson, steel, Simmons springs, \$20. Also 9x12 rug and pad, \$5. 160 Augustine St.
BEDROOM SET — Walnut Waterfall, 5-pc. 452 Electric Ave., Glen. 3137-J.
BEDROOM SUITE—Blond oak, single bed, vanity, bench, chest of drawers. St. 5556.
BEDROOM SUITE — Walnut, 4-pc. Also spring. Char. 2914-R after 5:30 p.m.
BEDROOM SUITE — Walnut, 3-pc. Glen. 3418-J.
BEDROOM SUITE—Walnut, 3 pc. Also 9-piece walnut dining room suite; Detroit Jewel gas stove, 9 Fairview Heights, Glen. 2560-M.
BEDSPRINGS—Three, full sized. Glen. 7373-W, after 6 p.m.
BENCH DRILL — Craftsman, 1/2-inch, less motor, \$40. St. 2597-J.
BENCH SAW — Eight-inch; Craftsman tilting table, \$40. Also Craftsman 24" jigsaw; Delco twin auto horns, \$3; portable reducing machine, motor driven, \$8. Char. 1296-J.
BICYCLE—26", chrome fenders. Cul. 0687-J after 6 p.m.
BICYCLE — Boy's, \$32. 822 Norton St., evenings.
BICYCLE — Boy's, 28" Roadmaster. Glen. 7450-J.
BICYCLE — Boy's, new tires, speedometer, \$11.50. Char. 0178-J after 6:30 p.m.
BICYCLE—Girl's, balloon tires. Glen. 0366-R.
BICYCLE — Girl's 26", balloon tires. Char. 1657-M.
BICYCLE—Girl's 24", 183 California Dr., after 6 p.m.
BICYCLE—Prewar 28", \$30. Also American flyer electric train set, \$10; hard toe hockey ice skates, size 9, \$3. Gen. 5562-J.
BICYCLES — Two 28" girls' Roadmaster. Char. 1286-J.
BICYCLES — Boy's 28", victory 28", lady's 28". Also 4-burner, gas stove. Hill. 3015-R.

FOR SALE

BOILER — Steam or hot water, 475-ft. radiation. 83 Avenue C, Pt. Pleasant.
BOOTS — Lady's black velvet, size 4. Glen. 4004-R.
BOWLING BALL—Bates grip, 16 lbs., \$13.50. Gen. 1895-M.
BOWLING BALL — Brunswick Mineralite, 3-finger, \$12. Also Schick "super" twin blade, \$15; Columbia Grafonola record player, \$12. St. 4545-L after 7 p.m.
BOX TRAILER — Welded frame, 16" tires, \$50. Webster 230-F-3.
CAMERA — Graflex 4x5, with automatic diaphragm control, flash synchronization, cut film magazine, \$125. Cul. 3960-M.
CAMERA — Kodak 35, with 1/4.5 lens, flash shutter. Glen. 4973-W.
CAMERA — Kodak Anastigmat, 5x7 view, 7" lens, 1/6.3. Also tuxedo, 37 long. Mon. 3152-W.
CAMERA — Leica D, Elmar 3.5 with sunshade and filters. D. Johnson, 313 Field St., Mon. 6079-W.
CAMERA—Recomar "18" with synchro flash, focusing back, film pack adapter, lens hood and filter holder, cut film holders, double extension bellows with tripod, \$85. Gen. 0877-M.
CAR HEATER — Gasoline. Also electric razor; bowling ball. Gen. 2674-M after 5 p.m.
CEDAR CHEST — Lane, walnut. Gen. 2811-W after 6 p.m.
CHEST OF DRAWERS — Walnut, modern. Glen. 6755-M.
CHILD CARE — Pre-school age. Mrs. Quinlan, 317 Steko Ave.
CHRISTMAS TREES—Your choice, any size, \$1 ea. Glen. 7060-M.
CLOTHING — Black skunk coat, size 12-14. Also man's suit, size 38; girl's formal, size 12. 185 E. Ridge Rd., Apt. 1. Glen. 7144-R.
CLOTHING — Boy's camel's hair coat, brown tweed suit, size 14-16; girl's jacket, size 12-14. Also toy stove, sink, icebox; electric broiler grill. 420 Flower City Pl., Glen. 1136-W evenings.
CLOTHING — Boy's shortie coat, brown, size 14; wool sport jacket, size 14; skirts, 24", waist; gabardine jodhpurs; suit dress, size 11; hunting pacs, 2 pair, size 7 1/2, 8 1/2. 213 Eastman Ave., Glen. 3093-R after 5 p.m.
CLOTHING — Coats, suits, skirts, dresses, size 12 or 13. Glen. 6056-J after 6 p.m.
CLOTHING — Girl's red wool coat, size 12-14; 2 spring coats, size 10 and 12. Glen. 2649-J.
CLOTHING — Peach taffeta dress, size 16; girl's English riding breeches, size 16; navy blue dress, size 16. Also bassinet. Glen. 5778-R.
CLOTHING — Raccoon coat, size 14; child's red-white coat, hat; 2 dresses, size 12; dress, size 7. Also coffee table; 2 child's rugs; doll cradle. Gen. 2219-R after 6 p.m.
CLOTHING — Man's brown topcoat, brown suit, size 39; Oxford gray overcoat, size 39; Hudson seal coat, size 14. Glen. 3949-J.
COAL HEATER — Bucket-a-Day. Also oil burners for kitchen range; 8" saw table 5'x1 1/2" shafting and hangers; 1/4-horse electric motor. 278 Stone Rd.
COAT—Black fitted Chesterfield, size 16. Also man's overcoat, size 39; dresses, black and gray, size 14-16. 1177 Lake Ave.
COAT — Girl's teddy bear, size 10, \$5. Char. 1296-J.
COAT—Girl's red, size 14. Also girl's riding jacket size 15; 2-burner gas plate. Glen. 2649-R.
COAT — Child's, red velvet, with leggings, size 2. Also maternity dress, black crepe, size 14-16; pure Irish linen tablecloth with 12 dinner napkins. Char. 2906-J.
COAT — Lady's black fitted, size 14-16, \$30. Glen. 5151, after 5 p.m.
COAT—Lady's winter, aqua, fur trim. 40 Rowley St., Apt. 8, after 6 p.m. or Sun.
COAT—Lady's brown winter, fur collar, size 18. St. 4137-R.
COAT—Lady's, raccoon, size 14. Also gray suit, size 14; gabardine suit, size 16; boy's green fingertip coat, size 10-12. Mon. 1313-M.
COAT — Mouton lamb. Also hickory skis, 7', with or without clamps. 15 Medfield Dr.
COAT — Lady's, winter, gray squirrel trim, size 9. 1351 Dewey Ave., Glen. 4867-R.
COAT — Lady's, size 18. Cul. 6810 between 5-7 p.m.
COAT — Mouton lamb. Also hickory skis, 7', with or without clamps. 15 Medfield Dr.
COAT—Muskrat, size 18. Cul. 2858-R.
COAT — Muskrat, brown, size 16-18. Mon. 1975-J.
COAT — Sable fur, blended muskrat, size 14-16. Hilton 90.
COAT — Winter, tuxedo front, black skunk fur trim, size 14. St. 4866-X.
COAT — Woman's plain black reefer, size 11. 1949 N. Clinton Ave.
COATS — Winter, for girls, size 10-12. Also boy's sport coats. St. 1047-J.

FOR SALE

COATS — Boy's overcoat, size 38 stout; lady's dark green with fur collar, size 14-16; muskrat fur, size 14-16. Also lady's blue suit, size 10-12; man's blue-stripe suit, size 40 stout. 207 Ellison St.
COATS — Lady's winter plaid, raccoon collar; navy blue fitted reversible. Also wool dress, all size 14-16. Char. 0588-R.
COMFORTERS — Heavy twin, \$12 for pair. Glen. 2022-W, after 6 p.m.
COT — Complete. Gen. 2889-J.
CRIB — Infant's, complete, \$5. Also Teeterbabe, \$2; English stroller, \$5, or all for \$10. Gen. 0478-R after 5 p.m.
CRIBS — Two; full size, \$15; small, \$8. 29 Lattimore Rd., U. of R. Village.
CURTAINS — Two prs., tailored marquisette. Also boy's covert coat, size 12. Glen. 3203-R.
DAMPER CONTROL—Blue Coal. Also storm windows, 2'x5'; kindling wood. Cul. 3478-W.
DAMPER CONTROL—Sears, thermostat, \$10. Glen. 3426-R.
DAVENPORT—Full size. Also lady's cloth coat, fur trim, size 40; large enamel roaster, 19 Ridgeway Ave., Glen. 4107-J.
DAVENPORT—Kroehler bed, 90". Also barrel chair; gate-leg table; end tables. Glen. 6090-M.
DAVENPORT—Maroon, 70 Weston Rd., Char. 1655-R.
DESK — Child's roll-top, chair. 1949 N. Clinton Ave.
DESK—Mahogany, flat top, 9 drawers. Glen. 7582-M, after 7 p.m.
DESKS — Children's maple, two, roll-tops with chairs, medium size, \$9, small size, \$8. Glen. 5200-M.
DIAMOND RINGS — Two, \$375, \$125. R. Ammering, Gallup Rd., Spencerport 323-F-22.
DINING ROOM SET — With 6 chairs, buffet. Also 4-burner gas stove. Cul. 5349-J.
DINING ROOM SUITE — Also Roper gas stove, good condition. Cul. 0770-W.
DINING ROOM SET — Walnut. Glen. 4430-J.
DINING ROOM SUITE — Oak table, 6 chairs. Char. 3348-W.
DINING ROOM SUITE — Mahogany, extension table, 5 chairs, buffet. St. 4303-J.
DINING ROOM SUITE — Six chairs, table seats ten, china cabinet, sideboard. Moffitt, 514 Peart Ave., Pt. Pleasant.
DINING ROOM SUITE—Walnut, 9-pc. Also kitchen sink, drainboard. St. 6629-L.
DINING ROOM TABLE — Round Oak, \$5. Glen. 5658-J.
DISHES—Hand-painted. Also trays. St. 1531-L after 6 p.m.
DOGS — 1 beagle, 1 1/2 years old; 2 pointers, 6 years and 3 years old, broken heels. 223 Stony Point Rd., North Chili 3-43-53.
DOLL CARRIAGE—Medium size. Cul. 1351-J after 6 p.m.
DOLLS — Seven-inch bisque glamour dolls, brides, hand-dressed, \$3.50 ea. Cul. 3702-W.
DOORS — Eight, large, heavy hardwood. Mon. 0021 evenings.
DOWN-PUFF — Quilted, rose and blue, \$10. Also jodhpurs, brown, size 5 1/2 AAA. \$4. Glen. 5601-R.
DRAFTING SET — Complete. Char. 1787.
DRESS—Rust-beige corduroy, size 9. Also lady's shoes, size 7AA. Glen. 6955-W.
DRESS SUIT—Size 40, complete. Hill. 2187-W.
DRESSES—Red velvet, aqua gabardine, blue wool, black-white check, all size 9-11. 118 Mitchell Rd.
DRESSES — Two "Teentimers." Also 3 wool skirts, all size 8. Glen. 2030-W.
ELECTRIC DRILL — One-half inch. Also 3 section window casing and windows for opening 57"x84"; furnace blower, thermostat. Char. 1395-W.
ELECTRIC RANGE — Westinghouse, \$50. 13 West College St., Brockport 278-M.
ELECTRIC SHAVER—Sunbeam Master. Mon. 5898-J.
ELECTRIC TRAIN — Lionel, engine, complete, \$20. 52 Catalpa Rd., Char. 2537-M.
ELECTRIC TRAIN — Lionel, streamlined engine, 4 cars, tracks mounted on plywood, recent model. Also large doll bed. Glen. 1516.
ELECTRIC TRAIN — Three coaches with tracks, \$15. Rolfe, 75 West Pkwy.
ERECTOR SET—Large with motor. Also smaller one. Hill. 1455-W after 6 p.m.
ERECTOR SET — Motor, extra set. Also bingo game; chequards card game, 19 Anderson Ave., Mon. 0860-J.
EVERGREENS—VanAlstyne Rd., Webster 154-F-12.
FACIAL CHAIR — Black leather adjustable, footrest. Cul. 2856-J after 6 p.m.
FIREPLACE SCREEN — 31x31. Also fireplace grate, 31" long. Cul. 2460-J.
FURNITURE — Blue marquisette, size 12. \$15; also lady's coat, camel's hair with zipper lining, size 14. Main 3246-M.
FURNITURE — Gold faille taffeta, size 12. 79 Bakerdale Rd.
FURNITURE — Size 13, \$15. Also aqua dress, size 16. 1177 Lake Ave.
FURNITURE — Five, three white, blue, pink, sizes 12-14. 355 Spencer Rd., Cul. 6942-J.
FURNITURE — Moss green, gold, yellow, size 12. Char. 0254.
FURNITURE — White net, also yellow marquisette, size 12; aqua satin, size 10. Cul. 1788-J.
FUR COAT — Also rocking horse. 60 Roth St.

FOR SALE

FUR COAT—Blue fox, 3/4 length, size 16. St. 5153-X after 6 p.m.
FUR COAT — Mink-dyed muskrat and matching hat. Also light brown coat with muskrat trim, both size 16-18. Char. 1992-J.
FUR—Silver fox, single. Main 4369, 8-5 p.m.
FURS — Mink, 5, \$50. Also red Chesterfield coat, size 12, \$8. Mon. 6917-J after 6 p.m.
FURS — Two natural dyed fox, \$75. Also Toastmaster, \$10. 1100 South Ave., apt. 31, Mon. 8346-W.
FURNACE CONTROL — Electric Janitor, Minneapolis Honeywell. Mon. 1840-W, after 5 p.m.
FURNITURE—All kinds. Glen. 1438-R.
FURNITURE — Child's large maple table, chairs, \$10. 3537 Lake Ave.
FURNITURE — Large table; chairs; dresser; commode; pictures; library table; oil heater; 2 large mirrors; Majestic radio. Glen. 3085-J.
FURNITURE—Light blue tapestry davenport. Glen. 5773-M.
FURNITURE — Living room. Glen. 3741-W.
FURNITURE — Solid maple bed; oak kitchen and other tables. Also Universal vacuum cleaner. 448 Winona Blvd., Char. 2648-R.
GALOSHES—Lady's brown high heel, size 7, \$3; child's brown, 10 and 11, \$7.5 ea. Also lady's black shoes, \$4; lady's black suede, 8AAA, \$1. Glen. 6389-R.
GAS BURNER — Three plate. Hill. 1196-R after 5:30 p.m.
GAS HEATER — Sidearm, with 30-gal. tank. 902 Glide St.
GAS HEATER — Sidearm, 30-gal. galvanized tank. 27 Stonecliff Dr.
GAS PLATE — Three-burner. Ruth Burgomaster, 159 Whitman Rd., Char. 1978-M.
GAS RANGE — Hi-Grade, side oven. Char. 1292-W.
GAS RANGE — 16 Gordon Pk., Main 1077-R.
GAS RANGE — White Star, 4 burners. Glen. 6271-M, after 5 p.m.
GAS STOVE — Also Kalamazoo coal heater. C. Smith, 382 Hinkleyville Rd., Adams Basin.
GUITAR — Hawaiian, with case. St. 1474-X.
HEARING AID — Sonotone 600. Also nylon green formal, size 12, \$20. Mon. 1617-W.
HEATER — Oak, \$15. Char. 2387, after 5 p.m.
HEATER — Southwind, gasoline. Mon. 1310-M.
HOCKEY SKATES—Boy's Silver Arrow, 5-6. Char. 1364-W.
HOT-WATER HEATER — Bucket-a-day. Also skis; ski poles; man's ski boots, size 8 1/2; fur coat, size 16. Char. 2210-M.
HOT-WATER HEATER — 30-gal. tank, side arm, Bucket-a-Day, \$20. 177 Wellington Ave.
HOT-WATER BOILER — For 4-5 room house. M. Speers, 1241 Hilton-Spencerport Rd., Hilton 176-F-13.
HOT WATER HEATER—Bucket-a-Day, 30-gal. tank, copper fittings. Gen. 7239-J.
HOT-WATER HEATER — Bucket-a-day, \$10. Glen. 4232-M.
HOT-WATER HEATER — Bucket-a-day, with 30-gal. tank, \$10. Glen. 2448-W.
HOT-WATER HEATER — Bucket-a-day, \$5. Also small gas heater, \$3. 156 Warner St.
HOT-WATER HEATERS—Two, side-arm, 30-gal. tanks. Gen. 1092.
HOT-WATER TANK—40-gal., side arm heater, \$10. Glen. 3776-R.
HOT WATER TANK — 50 gal. Also Bucket-a-Day heater. Gen. 5690-J.
HOUSEHOLD FURNISHINGS — Stove; Maytag washer; 7 ft. Frigidaire; living room; dining room; child's bedroom. 122 Sheraton Dr., Greece.
HOUSEHOLD ITEMS — ABC oil burner; Norman stove; two electric blankets; mahogany desk. Also black check wool coat; cherry wool suit, size 14. 73 Rosalind St., Gen. 0282-J.
ICEBOX — White. Mon. 3531-M.
ICE SKATES — Boy's, shoes, size 6. Also Lionel electric train, track. Glen. 7486-W.
ICE SKATES—Child's, white shoe, 2 pair, size 2. 481 Child St., Apt. 1 upstairs.
ICE SKATES—Girl's black, shoe size 5, \$4. Glen. 4481-R.
ICE SKATES—Hockey tubes, 2 prs., size 5; 2 prs. 15" tubes, size 8. Gen. 6142-M.
INNER TUBES—Goodrich Seal, 4, 6.00x 16. Hill. 1197-R.
JACKET — Man's, blue wool, size 40, \$10. 380 Durnan St. after 5 p.m.
JEEP—1947 Willys, heater. Char. 0490-J.
JODHPURS — Lady's, size 13. Also boots, size 8. Mon. 3325-R.
KITCHEN SET — Porcelain-top table, 5 straight-legged chrome chairs. Cul. 5025-J.
KITCHEN SINK — Porcelain, flat-edge, with back, chrome faucet, good condition, easily installed in cabinet. Gen. 4296-W.
LIVING ROOM SUITE — Two-piece blue, \$60. Glen. 5900-R.
LOT — 1/2 acre, Brighton, well-located, reasonable restrictions. Henry Davis, Marion 3771.
LOT — North side of Ashbourne Rd., 80'x123', 400' west of subway station, bungalow-type house permitted, \$1200. St. 6725-R.
MAH JONG SET—Complete with cards and case. Also kidney, mahogany coffee table. St. 1314-X.
MAN'S SUITS—Two, size 38, both for \$15. 258 Alphonse St., after 6 p.m. or Sat.

FOR SALE

MATERIAL — Lace medallion valencienne, 9 yds., \$50 per yd. Also 1" lace insertion, \$12 1/2 per yd. Gen. 4395-W.
MIRRORS — Round 24"; 14"x40", rosewood frame. Cul. 4067-J in a.m.
OIL HEATER — Beauty, heats 5 rooms. 26 Erie St. during day or between 6-7 p.m.
OIL HEATER—Pipeless, \$10. 149 Woodbury St.
OIL HEATER — Portable. Glen. 3199-J.
OIL HEATERS—Two, \$50 for one—\$75 for other with automatic refueling pump. 676 Monroe Ave.
OUTBOARD MOTOR — Mercury, 7 1/2 h.p., \$170. Ward, Brockport 321-M.
OVERCOAT — Brown. Also 2 blue sports jackets, all size 40. St. 4303-J.
OVERCOAT — Man's, size 40-42, \$20. Gen. 6779-R.
OVERCOAT — Man's gray, size 40-42. Glen. 6991-W.
OVERCOAT — Man's brown, size 44. 852 Arnett Blvd., Gen. 2606-W.
OVERCOAT — Man's, size 37. Gen. 6284-R.
OVERCOAT — Man's, worsted, size 40-42. Also lady's suede leather jacket, size 12-14. Char. 1162-W.
OVERCOATS — Oxford gray, size 38; green, size 37; man's reversible, size 37. Mon. 3342-R.
OVERCOATS—Boy's, 2, size 14-16. Glen. 3069-J.
OXFORDS — Nurse's white Air-Step, size 7AA. Gen. 3397-R.
PHONOGRAPH—Mechanical, \$15. Also girl's ice skates, size 5 1/2, \$8. Also 9x12 rug, \$10. Gen. 0687-R.
PHONOGRAPH — Portable, records, \$15. Also formal, black satin, size 14, \$20. Glen. 0127, between 5-7:30 p.m.
PIPER CUB—J-3. Fairport 373.
PUPPIES — Cocker, blonde females, golden male, AKC registered. 203 Collingsworth Dr.
PUPPIES — Collie thoroughbreds. 120 Cobbs Terr., evenings, Sundays.
PUPS—AKC Registered, Cocker. 766 Coldwater Rd.
PUPPY — Cocker, 3 mos. old, registered. Fairport 101-R.
PUPPY — Six months old. 108 Glenwood Ave.
PURSE—Hand crocheted, royal blue. 106 Gilbert Dr.
RADIO — Grunow, floor model. Glen. 6269-R.
RADIO—G-E, 10-tube console, walnut, \$35. St. 4165-L.
RADIO—Philco, 1946, combination record player. 230 Ravenwood Ave.
RADIO — Small. Also baby high chair; bassinet, baby bathtub, Trimble bathnet, aluminum stand, \$13; kiddie stroller, rocking horse, baby clothes tree; curtain stretcher; maple smoking stand. Glen. 5538.
RADIO — Zenith, 19 Bedford St. after 4 p.m.
RANGE — Andes, combination. Char. 1675-R.
RANGE — Combination. Also sink. Gen. 3147 after 6 p.m. or weekends.
RANGE — Combination Red Cross. Also icebox; arched reed fernery with bird cage. 963 Woodbine Ave.
RANGE—Table top, \$25. Glen. 1448.
RAINCOAT — Satin Sealskin Aquitog, size 16. 117 Ridgeway Ave.
RAZOR—Electric, \$8. Glen. 4991-M.
RECORDER—Admiral and records, \$40. 114 S. Union St., upstairs after 7 p.m.
REFRIGERATOR—Electric, 4' Frigidaire. Char. 0834.
REFRIGERATOR — Electric. Glen. 3196-W.
REFRIGERATOR — Electric, apt. size. Also 4-burner gas range; electric washing machine; 2 portable galv. tubs. 90 Palm St., Glen. 7390-W.
REFRIGERATOR—G-E, 6 cu. ft. Gen. 5912-R.
REFRIGERATOR—G-E, 7 cu. ft., \$100. Glen. 6269-R.
REFRIGERATOR — Stewart-Warner, 6' 41 Upton Pl., Char. 0243-W.
RIDING PANTS — Man's, waist 31". Also riding boots, man's, size 9; stove for hot-water tank; Unity spotlight, prewar, or will trade for 22 rifle. Char. 0613-M after 5:30.
RIFLE — Springfield, automatic, .22, \$30. 437 Remington St. evenings.
RIFLE — Winchester, 22 caliber, \$18. 445 N. Landing Rd.
RIFLES — .22, \$15 ea. Also baby swing. St. 4155-R before 7 p.m.
ROBE — Girl's. Also dress, \$4 ea.; blouse, size 14, \$2; ice skates, size 4-5, \$3 pr. Cul. 5431-R.
ROCKERS — Two, reed. Also screen door, 31 1/2"x60"; girl scout dresses, size 10-12; Eastern Star ring, black onyx. Char. 2493-W Friday.
ROLLER SKATES — Chicago, lady's, white, size 6. Char. 3286 after 6 p.m.
RUBBERS—Lady's black size 8 1/2. 87 Holbrook St., St. 3512-L evenings.
RUG — Axminster, with pad, 9x12, brown pattern. Char. 2225-J.
RUG—9x12. Glen. 0422-W.
RUG—Maroon, 9x15, with 3 scatter rugs, \$85. Also venetian blinds, three, 29x69, \$15. Glen. 1460-J.
RUG — Oriental, 4'x7', \$50. Mon. 3325-R.
RUG — Wine, 8 1/2'x10 1/2'. Also 2 formals, white, pink, size 18-20; boy's brown reversible coat, size 12-14. Char. 0021-J.
RUGS — Two, Chinese, blue and gray, one 2x4, one 4x7. \$150. Char. 0588-W.
RURAL MAIL BOX—Cul. 3897-M.
SAV-U-TIME—Two, 30 gal. tanks, side arm heaters. Glen. 2049-W.
SEWING MACHINE — White, rotary. 1128 Joseph Ave., front, after 6 p.m.

(Continued on Page 7)

FOR SALE

(Continued from Page 6)

SHIRTS — Men's, 4 white, 4 colored, 14½-33, \$1 ea. Char. 2024-J.

SHOES — Baby doll black suede sling pumps, size 5½B, \$10. Mon. 4955-J after 6 p.m.

SHOES — Red Cross, brown suede, size 5C, \$5. Gen. 6708-R after 6 p.m.

SHOES — Two pairs women's brown, size 7B, Mon. 3041-J after 6 p.m., except Thurs.

SHOOFLY — Also wheelbarrow; 2 antique beds; paint spraying outfit. Glen. 6910-W or Ontario 3165.

SHOTGUN — 12-gauge, shells. Also pr. hunting boots, size 10, also hunting pants, size 33. St. 3009-L.

SHOTGUN — 16-ga. single, \$12. 581 Child St.

SHOTGUN SHELLS — Box 16-gauge, 6 ch. Peters high velocity, \$1.50. Cul. 0355-W.

SIDE-ARM HEATER — Thirty-gal. galvanized tank. 45 Allerton St., Glen. 5438-M evenings.

SINK — Right-hand drainboard, 52", 8" apron. 55 Lakeview Pk.

SINK — Large. 263 Dearcop Dr., Gates, Gen. 6047-J.

SKATES — Boy's hockey tubes, size 7. Also erector set, No. 8 all-electric with motor; light blue wool dress, size 12. 153 Winchester St., apt. 5.

SKATES — Ice, size 9. Also roller, size 8. Glen. 1981-M.

SKATES — White, size 3; black, size 1. Also black military boots, size 3; black rubbers, size 2; raspberry coat-leggings set, size 8. Gen. 6243-M.

SKIIS — Five ft., \$2. Also 50-lb. ice-box, \$4. Glen. 1041-J.

SKIIS — Two pair, 7", metal edged, \$15 per pair. Glen. 4333-J.

SKIIS — 7 ft. Ridge top, harness, poles, shoes, size 9. 791 N. Clinton Ave.

SKI JACKET — Navy blue and red reversible, size 12. Also dark brown shoes, 7½AA; riding boots, women's brown, size 7½. Cul. 1798-J.

SKI OUTFIT — Chippewa boots, size 11; poles, hickory Northland skis, cable bindings, \$35. Also lady's English riding boots, size 6, \$5. 189 Grafton St.

SLIDE — Child's large. Glen. 2236-R.

SNOW JACKET — Girl's, blue and red, size 12. Gen. 2733-R after 6 p.m.

SNOWSUIT — Boy's, 1-pc., size 1, \$5. Mon. 2408-R.

SNOWSUITS — Blue, size 10-12; green, size 16-18. Also brown coat with beaver trim, size 12-14, brown Chesterfield, size 12; dresses, size 12-14. Glen. 4321-J after 6 p.m.

SNOWSUIT — Girl's three-piece wool, with leggings, size 3. Cul. 0525-W.

SNOWSUITS — Two, boy's, size 1, 3. Also playpen; Taylor Tot; rocking horse; car bed. Char. 2845-M.

SOAPBOX RACER WHEELS — And axles. Glen. 6392-M.

SPRING — Coil, complete. Glen. 3329-W.

STOKER — Fairbanks Morse with controls, \$100. 44 Pierpont St., Glen. 6576-M.

STORM SASH — 2'4"x5'2", \$15. Mon. 6957-J.

STORM WINDOWS — Three 35½"x46½"; four 35"x42½". 154 St. Casimir St.

STORM WINDOWS — With matching bronze screens, California red wood. Gen. 3759-M.

STORM WINDOWS — Eight, size 30"x48", one size 28"x46". Also 10 screens, size 30"x48". 766 Coldwater Rd.

STOVE — Combination. 591 Driving Park.

STOVE — Combination, \$10. 49 Tacoma St.

STOVE — Combination, oil and bottled gas. Glen. 0250-R.

STOVE — Combination, white, Bengal. 84 Saratoga Ave. after 5 p.m.

STOVE — Combination coal-gas, Steward. Gen. 5765-W.

STOVE — Apartment size. Also side icebox, white; other household articles. Also 2 formal, size 12. Glen. 2102-J after 7:30 p.m.

STOVE — Bengal, combination, tabletop. 22 Scramton St.

STOVE — Combination gas and oil, \$60. Also 2 kitchen tables, 2 chairs, \$6; Radiant gas heater, \$4; full-size bed, complete, \$5. Char. 1177-J.

STOVE — Gas, 4-burner, oven, \$15. 187 Huntington St., Sea Breeze, Sat. Sun.

STOVE — Electric, Westinghouse, 4 burners, oven. Also Glenwood combination Brockport 838-F-15.

STOVE — Kerosene, white porcelain, low oven with indicator. 263 Dearcop Dr., Gates, Gen. 6047-J.

STOVE — Norman combination coal-gas, \$25. 84 Somerset St.

STOVE — Norman combination with Florence oil burners. Also baby crib. St. 4074-L.

STOVE — Oak heater, complete. 92 Comfort St., upstairs.

STOVE — Red Cross combination, \$30. Also Servel gas refrigerator, 4½", \$75. Glen. 7671-M.

STOVE — Tappan, \$15. 285 Summit Grove Pk., Glen. 0578-J.

STROLLER — Whitney Steer-o-matic, \$15. Also highchair. 244 Almay Rd., Greece.

STUDIO COUCH — \$35. 55 Avondale Rd.

SUIT DRESS — Two-piece, black, size 16, \$5. Also maroon sport shirt, size 15½, \$5. 39 Garfield St.

SUIT — Boy's, navy, wool, size 8-10, \$8.50. Cul. 2868.

SUIT — Man's double-breasted, 2 pair trousers, size 42-38, \$25. Also man's gray Stetson de luxe hat, size 7½, \$6; Hercules Hopper soft coal stoker, \$75. 97 Adams St., Brockport 308-J.

SUN LAMP — Sperti portable, \$28. Char. 2349-W after 6 p.m.

TABLE SET — Child's. Also sled box; rocking horse; gun cabinet. Cul. 5500-J.

FOR SALE

TABLE — Duncan Phyfe, drop-leaf extension, solid mahogany, seats 12, \$100. Glen. 0335-R.

TABLE — Porcelain top, four chairs. Also large davenport; Hendryx birdcage. Char. 2429-M.

TABLES — Also roll-top desk; chest of drawers; washing machine. 53 Chimo Rd., evenings.

TAILS — Man's, size 36. Glen. 4321-J after 6 p.m.

TIPUPS — Two doz., for winter fishing. Glen. 6718-M.

TIRES — Five, 5x5.50x18, 4 ply. Glen. 7060-M.

TIRES — Goodyear de luxe, 5. 7.00x15, tubes, \$35. Char. 2649-J.

TOBOGGAN — Seven ft., complete, \$21. Also North Star skates, size 10, \$7. 37 Maplehurst Rd., Glen. 4640-J.

TOOL BOX — Millwright's. Cul. 2948-W.

TRAIN TRANSFORMER — American Flyer, 100 Watts. Gen. 5631-R.

TRAPEZE SET — Junior size. St. 6261-X.

TRICYCLE — Also baby carriage. Cul. 5499-R.

TRICYCLE — Velo-king, 20". Henrietta 365-W.

TRICYCLE — Small. Also three-wheel propeller auto-aeroplane; spring horse, small three-wheel scooter; other toys. 17 Highland Ave., between 5:30-7 p.m.

TRUCK — Ford, 1-ton. Cul. 2921-M.

TRUCK — Chevrolet, 1938, 1½-ton stake, long wheel base. Cul. 6810.

TUXEDO — Complete, 37-38. Also 2 steel folding cots. Char. 2214-R.

TUXEDO — Size 35, complete, \$35. Cul. 4218-W.

TWIN BLOWER — For furnace, \$15. Char. 3161-R.

TYPEWRITER — Corona portable and case. Also Glenwood side-oven gas range; man's large trousers; coat; lady's and girl's clothing. Glen. 5600-R.

TYPEWRITER — Cul. 2124-W after 6 p.m.

TYPEWRITER — Underwood. Also Hawaiian guitar with case, music equipment. 252 Navarre Rd.

VACUUM CLEANER — Air-Way Sanitizer. Glen. 1093-M.

VACUUM CLEANER — Airway. Also Silvertone radio console; Kenmore washing machine; boy's shoe roller skates, size 8½; boy's ice skates. 370 Merchants Rd., Cul. 5521-R.

VACUUM CLEANER — Premier, \$8. Gen. 3968-R.

VACUUM CLEANER — Kenmore. Gen. 6699-R.

VICTROLA — Victor console, 50 records, \$15. Also men's ice skates, size 10 and 10½. Pittsford 223-J.

VIOLIN — 3/4 with stand. 27 Eddy St., after 6 p.m.

WARDROBE TRUNK — Hartmann, full size, \$35. KO ext. 6201.

WASHER — Kenmore. 1305 Long Pond Road.

WASHER — ABC, \$20. Glen. 3037-M.

WASHER — Easy Spindrier. Also Shavemaster electric razor; gas hot-water heater sidearm; mirror stand. Glen. 3234-W.

WASHING MACHINE — Agitator type, insulated tub, drain pump. Glen. 4033-M.

WASHING MACHINE — Apex, 5-ft. tub. Cul. 3896-M.

WASHING MACHINE — Thor, \$75. Cul. 2208-R.

WASHING MACHINE — Apex. Also vacuum cleaner, \$3. Glen. 6072-J.

WASHING MACHINE — Easy. Also davenport, reversible cushions. 390 Elm-grove Rd., Greece.

WASHING MACHINE — Will deliver, \$25. Also vacuum cleaner; antique spinning wheel; yarning loom; oil burner unit. 509 Vosburg Rd. off Lake Rd., Webster.

WOOL MITTENS — Knitted by order, \$4 pr. St. 5101-J.

WRISTWATCH — Man's, Swiss, 30-minute recorder, \$45. Mon. 5236-W, after 6 p.m.

HOUSES FOR SALE

HOUSE — 156 Flint St., immediate possession, modern 6 rooms, converted single, large living room, open fireplace, 3-car garage, income about \$500, plus owner's apartment, price reduced.

HOUSE — Six rooms, steam heat, storm windows, screens, insulated, stone fireplace, 2-car garage, 1 acre of land. Also wardrobe trunk; cross-cut saw; mackinaw, medium size; damper control with thermostat. 4488 Mt. Read Blvd.

HOUSE — Five rooms, attached 2-car garage, porch, black-top drive, gas heat, 72x255 lot, on Culver near Ridge, immediate occupancy. St. 2008-L.

Latona, 249 Rye, immediate occupancy, 6 rooms, fireplace, powder room, gas heat, screens, storm sash, woods, lot 80x326. Glen. 6813-R.

WANTED

AUTOMOBILE — Model A Ford coupe. 18 Phelps Ave.

BABY CRIBS — Two, for twins, large size. Gen. 4621-J.

BANTAM SPECIAL — 1/2. Gen. 2811-M after 5 p.m.

BENCH VISE — Machinist's. Also ¼ h.p. motor. St. 1312-R.

BICYCLE — Boy's, 28". St. 2194-X.

BICYCLE — Girl's. Main 0519-M, after 5:30 p.m.

CAMERA — 16-mm., f/3.5 lens or better. Gen. 4060-W.

CHRISTMAS MANGER — With or without statues. Gerald Vogler, Glen. 5796-M.

CLOTHING — Boy's jacket, size 10. Also girl's winter coat, size 6-7. Glen. 0859-J after 6 p.m.

WANTED

CONTACT PRINTER — 4x5 or 5x7. Glen. 7097-J.

CURTAINS — To launder in my home. Also sewing and ironing. Glen. 5985-J.

DESK — Prefer small. Also metro-nome. Gen. 6630-R after 6 p.m.

DOLL CARRIAGE — Also doll house, for 7-yr.-old. Also table-and-chair set for 4-yr.-old. Gen. 5218-J.

DOLL CARRIAGE — 23 inches. Cul. 5634-J.

DOLL HOUSE — Wood, with furniture. Char. 2429-M.

ELECTRIC TRAIN — With tracks. Gen. 7242-M.

ENLARGER — With lens, 3¼x4½. St. 6811-L between 6 and 7 p.m.

ERECTOR SET — St. 4547-R between 5:30-7 p.m.

FIREPLACE SET — Complete with screen, andirons, tools. 658 Melville St., after 6 p.m.

GARAGE — On Augustine St., between Dewey-Dove. Glen. 0584-J.

GARAGE — Vicinity of Averill Ave. and Ashland St., or reasonable distance. 73 Averill Ave.

GARAGE — Vicinity Oxford-University Ave., St. 1291-J.

GOLF CLUBS — Men's, complete set. Glen. 3030-J mornings.

HELP — Elderly woman wanted for 2 weeks between Christmas and New Year's. Glen. 6183-R.

ICE SKATES — Boy's, size 5; girl's, size 6½ and 8½. Mon. 8312-J.

ICE SKATES — Lady's, white, figure, KO ext. 284.

ICE SKATES — Men's tube, size 9-10. Mon. 1833-M.

ICE SKATES — Man's, size 9. Glen. 6532.

MAHJONG SET — Char. 2548-R.

RIDE — Between Howard Rd., Gates, and KP, hours 8-5 p.m. C. Habgood, Gen. 1346-J.

PIANIST — Capable of accompanying vocalist rendering classics. Mon. 7534, evenings after 5:30.

PIANO — Must be small studio type, or will store spinet or baby grand for its use and upkeep, adults. Cul. 4042-W.

POOL TABLE — 117 Ridgeway Ave., Glen. 7623-J.

RIDE — From 424 Webster Ave., near Bay St. to H-E, 8 to 5 p.m. Cul. 1091-R.

RIDE — From Bergen, route 33A to NOD, by girl who must be at work at 7:30 a.m. CW KODAKERY 334-6256.

RIDE — From Brookfield Rd., zone 10, to H-E and return, hours 8-5. Cul. 2010-J.

RIDE — From Brookfield and Atlantic or Brookfield and Humboldt to H-E and return, hours 8-5 shift. Cul. 3673-M.

RIDE — From Brockport to H-E and return, hours 7 a.m. to 3:30 p.m. Brockport 48-R.

RIDE — From Bronson and Jefferson to H-E and return, 7:48 to 4:48, 156 Bronson Ave.

RIDE — From CW to Elmtree Farm, Latta Rd., 7:35 to 4:35. Char. 0581-R.

RIDE — From KP to Clifford-Portland, 5 p.m., 5 nights. St. 5450-J.

RIDE — From Fairport Rd., Webster to H-E, 7 a.m. to 3:30 p.m. H-E KODAKERY Office.

RIDE — From Fairport to KO and return, 8-5 p.m., by three KO girls. Fairport 456-J or KO 5206.

RIDE — From Genesee Park Blvd.-Raeburn Ave. section, to H-E and return, hours 8-5. Gen. 1788-J, after 6 p.m.

RIDE — From Goodman-Ridge Rd. E. section to KP and return, hours 8-5. Mary De Wind, 2518 Parker Rd.

RIDE — From Hamlin to KP and return, hours 8-5 p.m. Hamlin 33-F-11.

RIDE — From Ridge and Culver to KP and return, hours 8-5 p.m. Dick Dunnett, Cul. 0640-M after 6 p.m.

RIDE — From Sodus to CW or vicinity and return, hours 7:35-4:35 p.m. Sodus 5119.

RIDE — From Thurston Rd.-Rosaling St. section to H-E and return, hours 8-5. Gen. 3395-M after 6 p.m.

RIDE — From vicinity of Allendale Ave. and Humboldt St. to H-E and return, hours 8-5. Cul. 2330.

RIDE — From Webster to CW and return, hours 8-5. Stibner, Webster 47-M.

RIDE — From Webster to CW, hours 7:30 to 4:30. CW KODAKERY 334-6256.

RIDE — For 2 from corner of Lake Rd.-Orchard Pl., Forest Lawn, to KP and return, hours 8-5 p.m. Cul. 0469-R after 6 p.m.

RIDE — From LeRoy to KP and return, hours 8-5 Monday, 8-6 Tuesday-Friday. R. M. Richards, 7 Gilbert St., LeRoy.

RIDE — From vicinity West High Terr. -Genesee St. to KP and return, hours 8-5 p.m. C. Zimmerman, Gen. 4531-R.

RIDE — To Albany or New York City, Dec. 19 or 20, willing to share expenses. Dorothy McQuaig, Mon. 7482.

RIDE — To New York-New Jersey area any Friday after 5 p.m. Gundlach, 100 Gibbs St.

RIDE — Urgently needed, from Spencerport to CW and return, hours 7:35-4:35 p.m. Spencerport 331-F-2.

RIDERS — From Dewey-Stone section to KO and return, hours 8-5 p.m. Char. 1021-R after 6 p.m.

RIDERS — From Holley or Brockport to H-E or CW, 7:36 a.m. to 4:36 p.m. Holley 2777.

RIDERS — From Pittsford to KP and return via East Ave. and Winton Rd., hours 8-5. Bill Shannon, Pittsford 136-F-21.

RIDERS — Two ladies, vicinity Mt. Hope Ave.-Strong Memorial section to KP and return, hours 8-5 p.m. Mon. 6536-M.

WANTED

SHOTGUN — 12-ga., Belgian-Browning, 26-or-28-in., modified. Main 4078-R evenings.

SEWING MACHINE — Portable. Glen. 0365-J.

SKI OUTFIT — Boy's, size 12-14. Char. 0846-R.

SKI PANTS — Boy's, size 16. Gen. 4638-M, evenings.

SKIIS — Six ft. long, complete, size 3. Char. 0846-R.

SKIS — Suitable for 10-yr.-old. Char. 0718-W.

SNOWSUIT — Girl's, size 16. Gen. 2733-R, after 6 p.m.

SPINET — Or small upright piano. St. 0873, after 5 p.m.

STEAMER TRUNK — Moderate price. Cul. 0981-R.

STORM WINDOWS — Ten, various sizes. Bailey, 97 Adams St., Brockport 308-J.

STRING BASS — Bergen 38-F-3.

STUDIO COUCH — And chair. Gen. 5433-R, ask for Vincent.

TOBOGGAN — 6' or 8'. Glen. 2623.

TOY TRAIN — Transformer, 25-cycle, 20-volt output. Write A. E. Weaver, Bergen, N.Y.

TRAPEZE SET — With ladder. Glen. 4337-R.

UPRIGHT PIANO — Small, studio size. Mon. 4354-J.

APARTMENTS WANTED TO RENT

Abode by quiet couple, furnished or unfurnished. Char. 0581-R, after 5:30 p.m.

By veteran and bride-to-be, furnished or unfurnished, by Feb. 1st. Gen. 5945-J, after 5:30 p.m.

Employed woman in urgent need of 2-room unfurnished studio apartment. Main 0800 before 5 p.m., St. 4645-L after 6 p.m.

Employed woman in urgent need for 3-room, unfurnished studio apartment. Main 0800 before 5 p.m.; St. 4645-L after 6 p.m.

Employed woman in urgent need for 3-room unfurnished studio apartment. Main 0800 before 5, St. 4645-L, after 6 p.m.

Family of 3 adults needs 5 rooms immediately, best of references, forced to move. Cul. 2597-R.

Flat or housekeeping rooms for two employed ladies, highest references. Cul. 0936-J nights.

Flat or 4-room apartment for veteran and wife, and baby. Cul. 3487-R.

Four-5 room cottage, for 2 working adults, or will buy. 155 Breck St.

Four-5 rooms. Gen. 6370-J.

Four-5 rooms, heated, unfurnished, by employed mother and 3 employed adult children, references. Mrs. Musson, 15 Costar St., apt. 117, Glen. 7142, after 6 p.m. or all day Saturday.

Four-5 rooms, unfurnished or flat, half double, best of references, urgent. Glen. 0044-M.

Furnished or unfurnished, 2 rooms and private bath. Gen. 4421-W after 5 p.m.

Furnished, or unfurnished, 3-4 rooms for two adults. St. 1191-L.

Furnished or unfurnished, 2-3 rooms, moderate rent for veteran and wife, before Jan. 1. Mr. Langeland, Mon. 2538-M, evenings.

Or flat, unfurnished, for employed couple. Gen. 4129-J.

Or flat, by employed couple. Char. 2577-M.

Or flat, 3-4-5 rooms. Main 3008-W.

Or flat, urgently needed, refined family, 3 adults. Gen. 1616-W.

Or flat, by refined middle-aged couple, 3-4 rooms, 19th Ward preferred. Gen. 0582-W.

Or flat, 4-5 rooms, please help. Cul. 6105-M anytime.

Or house, or flat with 2-3 bedrooms. Cul. 4926-M.

Three-4 unfurnished rooms. CW KODAKERY 334-6256.

Three-4 unfurnished rooms for young married couple, both working. Glen. 2763-W.

Two rooms, kitchen and bath, near Dewey-Lake bus line. CW KODAKERY 334-6256.

Three rooms, unfurnished, for mother and daughter in Flower City Park section. Glen. 4634-W.

Three rooms, furnished, by working couple, within 30 days, will redecorate if materials are furnished. 46 Argyle St., Mon. 9214, between 6-7 p.m.

Three-4 rooms, by young couple. Glen. 5392-R.

Two or 3 rooms including cooking facilities needed by mother and son. St. 5368-J.

Two rooms, unfurnished, private bath and kitchenette, for young employed couple, \$50 or under, prefer South side. Mon. 8050.

Two-3 rooms, furnished or not, around Dewey-Lake section, by veteran and wife. Mrs. Skelly, St. 4396.

Unfurnished by widow, daughter, best references, Kodak vicinity preferred. Glen. 2741-M.

Unfurnished, studio apartment or share with employed woman, must have some room for furniture. Char. 0189-R.

Unfurnished for veteran and bride, best of references. Glen. 5718-M, after 6 p.m.

Unfurnished living quarters desperately needed by H-E toolmaker, wife and two children. Mon. 4839-W.

Urgent, 3 rooms, unfurnished, veteran and wife, both employed. Glen. 1798-J.

Urgently needed, 4-5-6 rooms, for woman and invalid brother, forced to move due to sale of house. Main 3008-W.

Working couple would like three unfurnished rooms. Char. 1787.

FOR RENT

Two-room unfurnished apartment, gas, electric, heat, garage, private front porch, garden space, excellent for middle-aged couple who desire quiet home, \$12 per week. 133 Glade St., evenings.

APARTMENTS — Maplewood Ave., one 3-room downstairs, one 4-room upstairs, all modern, tile baths, cabinet kitchens, porches, oil heated, hot water, ready for immediate occupancy. Glen. 5357-R.

APARTMENT — One room, furnished, semi-private bath, kitchenette, \$6.90 weekly. Mrs. McWilliams, Park Ave., Mon. 3933-R.

APARTMENT — Two rooms, kitchen, pantry, studio-living room, private entrance, unfurnished, heat, light, hot water, share bath, \$60-\$65 monthly. Mrs. Mendelson, 87 Field St., Mon. 3122-W.

APARTMENT — Two-room, private bath, gas, electric, hot water, suitable for 2 girls, kitchen privileges, \$8 each weekly. Mr. Hall, 123 Ardmore St.

APARTMENTS — Two, two-room, kitchen and studio room, separate entrance, \$65 per mo. Three-room, kitchen, living room, bedroom, heat, light, hot water, share bath until spring, separate entrance, \$80 per month. Mrs. Mendelson, 87 Field St., Mon. 3122-W.

GARAGE — 2 Lake View Pk., Glen. 5099-W.

ROOM — 685 Lake Ave., apt. 7, after 5:30 or KP ext. 7263.

ROOM — Large, double bed, double closet, prefer 2 men or business couple. Glen. 0056-M.

ROOM — For young lady. Cul. 0034, 74 Melville St.

ROOM — Breakfast if desired. Char. 2912-M.

ROOM — Furnished, Park Ave. busline, gentleman preferred. Mon. 1305.

ROOM — Furnished, breakfast if desired, on bus line, girl preferred 1044 N. Goodman St., Cul. 6325-M.

ROOM — Furnished, large, front bedroom, private entrance, Thurston-Chill section, woman preferred. Gen. 1092.

ROOM — Furnished, private family, 87 Holbrook St., St. 3512-L, evenings.

ROOM — Girl preferred, pleasant, single. Glen. 4212-M.

ROOM — Middle-aged person preferred, on bus line, laundry if desired. 225 Lyndhurst St.

ROOM — Single, private home, girl preferred. 10 Conrad Dr., Char. 0417-J.

ROOM — Single, pleasant, gentleman preferred. Glen. 5570-M.

ROOM — Single, gentleman preferred, breakfast if desired, \$6 weekly, 26 Quincy St.

ROOM — Single, breakfast, girl preferred. Mrs. Sugarmen, 4 Menlo Place, Mon. 8109-M.

ROOM — Single, next to bath, use of phone, Park bus line, man preferred, \$7, 194 Westminster Pk., Mon. 3549-W at noon or after 6 p.m.

ROOM — Single, private home, Glen. 4010-R, evenings or weekends.

ROOM — Sleeping, furnished, gentleman preferred, within walking distance to H-E. 8 Kay Terr.

ROOM — Third floor with private bath and private entrance. Apperman, 19 Vassar St., Mon. 7098.

ROOM — Warm, quiet, adjoining bath, parking space, \$8.50 per week. Char. 2057-M.

ROOM — Large, furnished, ideal location, suitable for 1-2 people, with garage, 658 Melville St. after 6 p.m. Cul. 0337-J.

ROOM — With enclosed porch, employed gentleman preferred. Gen. 2695-W.

ROOM AND BOARD — For couple, large, modern home. 161 Cinnabar Rd.

WANTED TO RENT

Apartment with living room, bedroom, kitchen and private bath, for couple. 140 Cummings St.

GARAGE — Vicinity 98 Meigs St. Schmidt, Mon. 3321-R.

GARAGE — Vicinity 238 Lexington Ave. Inquire 238 Lexington Ave.

HOUSE — Or flat, 2 bedrooms, unfurnished, by Kodak foreman, and wife, good section. Mon. 2361-J.

SWAP

Four-room apartment in Park Ave. section, beautifully furnished, including piano; for smaller apartment, furnished or unfurnished, in any section. Mr. Langeland, Mon. 2538-M, evenings.

LOST AND FOUND

LOST — College ring with red stone, engraving "T.D. Roberts," along Westfall Rd., Brighton, Glen. 4447-W.

LOST — Gold ring, initials FW, vicinity Platt St. lobby or in CW, CW KODAKERY 334-6256.

LOST — Billfold, near Dept. 20, CW. Reward. CW KODAKERY 334-6256.

LOST — Ronson lighter, vicinity Bldg. 28, KP, on Nov. 21. Glen. 1942-R.

LOST — Ronson lighter, with initials "G.J.M." on St. Paul, near Ave. E. H-E KODAKERY Office.

LOST — Partial plate, vicinity KO. KO KODAKERY.

LOST — Tie clip, initials "H.B.D." vicinity of H-E H-E KODAKERY Office.

FOUND — Girl's red coat, vicinity of Hart St. and St. Paul. Char. 0745-M.

FOUND — Ronson lighter, in front of CW on State St. on Dec. 3 in afternoon. KO KODAKERY, ext. 4224.

Plants, Office to Floor Teams In New Kodak Basketball Loop

Formation of a Kodak Interplant Basketball League to be comprised of major quints from Kodak Park, Camera Works, Hawk-Eye and Kodak Office was announced last week by plant and Office athletic and recreation directors. Tentatively scheduled to open the season immediately after the holidays, the league will operate at the State Street auditorium with two games slated to be run off every Monday night.



Get Softball Trophy — Manager Jim Gallagher, left, and his assistant, Al Tinsmon, receive Major Industrial Softball League trophy for 1947 from Dr. John Norris, KPAA prexy, at banquet honoring Kaypee nine. The Kaypees won both the Major League pennant and City Tournament last season.

City Champion KP Nine Feted; Gallagher Retained as Pilot

Kodak Park's city championship softball team had its night on Dec. 3 when the KPAA tendered Jim Gallagher's team its 12th annual banquet at Barnard Exempt. Close to 80 persons attended the affair honoring the 1947 aggregation which copped both Major League and city crowns. Since 1934 the Kaypees have annexed 11 major, 6 city, 6 state, 4 regional, 2 national titles.

It was announced that Gallagher will again pilot the Kaypees during the 1948 season.

Dr. John Norris, KPAA prexy, served as master of ceremonies at the dinner which also featured brief remarks by R. W. Waldron, superintendent of the KP Industrial Relations Dept. Following a trophy presentation to Gallagher by Dr. Norris, KPAA Vice-President George Patterson handed out individual awards to Al Tinsmon, George Beane, Tommy Castle, Charlie Dick, Bill Finucane, Leo Gallagher, Harold (Shifty) Gears, Mike Golisano, George Krembel, Frank (Bud) Oister, Johnny O'Rourke, Ralph Taccone, Ralph Woodhall and Paul Heuser, team trainer.

Bill Finucane and Skipper Gallagher's wife led group singing during the dinner, with the players, their wives and other guests enjoying dancing for the remainder of the evening.

The chap is all wrong who thinks the key of success fits the night-latch.

Bldg. 23 Drops Power Quint From Unbeaten Ranks at KP

Division leads in the KPAA Departmental cage wheel were narrowed down last week as both National and American division clubs turned in decisive wins. Only five teams, all of them in the National division, remain undefeated. They are Bldg. 58, Bldg. 23, Bldg. 12, Film Emulsion and the Emcos. Industrial Engineering hoopers, sporting one victory and one defeat, top five contenders in the American loop.

Emcos Win, 41-36

In the closest game of the week, the Emcos tagged Emulsion Research with its third straight loss, 41-36, as Joe Cirrincione, held scoreless in the first half, broke loose with a 15-point barrage in the closing session to overcome a half-time deficit of 15-12. Don Brown turned in 13 points and a strong floor game to help the cause.

Bldg. 30, after being held to an 8-8 tie in the opening quarter, pulled away to upset Bldg. 14, 56-25, as Phil Hutton sparkled for Bldg. 14. Close checking marked the fray between Bldg. 58 and Synthetic Chemistry, taken by the former, 35-25. Ralph Abel and Jerry Rauber tallied 9 points to lead their respective clubs.

The opening night schedule, as tentatively arranged last week, pits Jack Brightman's Kaypees, top-heavy favorite to win the championship, against Kodak Office in the 7:30 game, with Bill Kearns' H-E five facing Camera Works in the 8:30 skirmish. While the starting date was not definite at this writing, the season's opener will likely be scheduled for Jan. 5.

Kaypees Trim Collegians

Norm Robinson, CW basketball director, Tuesday named Bernie Messmer as the Cameras' coach. The KO cage commissioner, Andy Andrews, will be assisted by Fred Fogarty in handling the Office entry. With the exception of the Park team, which has already played several exhibitions, none of the league teams are set. The Kaypees won their second game in three starts Dec. 2 at Lima, thumping Genesee Junior College, 51-41.

Kearns, the veteran H-E player-coach, has two veterans from last year's squad. One is Tony Soler, who had a tryout with the Rochester Royals at the season's outset, and the other is Joe Ross. The CW and KO major quints probably will be chosen from their respective intraplant leagues.

While all four Kodak units previously have been represented in local industrial hardwood circles, the new league is the first of its kind in the history of Kodak. The Rochester Major Industrial League will not operate this season.

Dept. 49 Leads CW Cage League

Dept. 49 won its fourth straight in the CW Intraplant League last week. Woodworth & Smith was the victim by a 49-16 count.

In other games Dept. 11 routed Dept. 23, 55-16, and Dept. 66 eked out a 31-25 verdict over Dept. 25.

LEAGUE STANDINGS

W	L	W	L
Dept. 49	4 0	Dept. 66	2 2
Dept. 11	3 1	Dept. 23	1 3
Dept. 25	2 2	WW & Smith	0 4

Games, Dec. 17, KO Auditorium
8 p.m.—WW & Smith vs. Dept. 25.
9 p.m.—Dept. 11 vs. Dept. 49.
10 p.m.—Dept. 23 vs. Dept. 66.

LEADING SCORERS

fg	ft	tp
John Coia, Dept. 49	23	3 49
Gordon Stoll, Dept. 11	21	3 45
Bill Maslanka, Dept. 66	17	10 44
Charlie Price, Dept. 25	19	5 43

Jim Curtin's Film Emulsion crew registered one of the league's highest point totals to date in defeating Messenger Service, 52-17, with Harry Trezise connecting for 10 field goals. Art Steele and Jack Dewhirst, the loop's leading scorer, posted 12 points apiece. Bldg. 23's defending champions racked up their third consecutive win by beating Power, 51-25, with "Marty" Byrnes finding the baskets for 11 points.

Bldg. 12 held its place among the leaders by trouncing the Cafeteria, 42-24. Paul Wackerow's 7 field goals for the winners were eclipsed by Les Mort's 16-point effort for the losers. The standings as of Dec. 4:

National Division				American Division			
W	L	W	L	W	L	W	L
Bldg. 58	3 0	Emcos	2 0	Ind. Eng.	1 1	Emul. Res.	0 3
Bldg. 23	3 0	Power	2 1	Syn. Chem.	1 2	Cafeteria	0 3
Film Emul.	3 0	Eng.	1 2	Bldg. 30	1 2	Messengers	0 3
Bldg. 12	3 0	Bldg. 14	0 3				



Big Buck — Earl Quinn, of the Dept. of Manufacturing Experiments at KP, is shown above with the 11-point buck he brought down near Mount Morris in Livingston County as the deer-hunting season opened.

Houser Hits Hefty 268

Two CW keggers, George Houser and Walter Szymula, shared the limelight last week at Kodak.

Houser, bowling in the CW No. 1 League last Friday, posted a booming 268 solo. After a first-frame spare he put on eight straight strikes. A sticky 5-pin cost him a strike in the 10th, but he picked the spare and struck out.

Szymula rolled a 656 series in the CW Saturday. The leaders:

Score	Score	Score	Score
George Houser, CW No. 1	268	Don Spitalo, KO National	258
Robert Bradley, KPAA Mon. B-8	254	Ed Olson, CW Friday	247
Mike Lanek, CW Saturday	246	Harold Servis, KPAA Thurs. A	245
Roy Sill, KPAA Thurs. A	242	Harry Windholz, CW Office	242
Walter Szymula, CW Saturday	237	Jim Gallagher, KPAA Thurs. A	237
Mike Falzone, KPAA Thurs. A	236	Frank Schirmer, CW Supervisors	236
Robert Vroman, KPAA Trickworker	235	Jim Santarose, CW National	233
Dan Engle, CW Saturday	232	Ed Butts, CW National	231
Joe Mongello, CW Friday	227	Frank Lortz, E&M	226
John Judge, KO Repair	225	Nelson Brule, CW No. 1	225
George Kuhn, KPAA Tues. B	225	Joe Poweska, H-E Webber	225
Elmer Smathers, H-E Ridge	223	Bill Midavaine, KPAA Friday B-8	223
Al Worboys, KO American	223	Chet Maynard, KO National	222
Fred Fogarty, KO American	222	Ray David, CW Friday	221
Charles Martindale, CW Saturday	221	Herbert Heinrich, CW No. 1	220
Ralph Sill, E&M	220	Dave Simonsen, KPAA Tuesday B	220
Frank Ever, KPAA Tues. B	220	Edward Hamilton, KPAA Tues. B	217
Raymond Blasie, CW No. 1	217	Tom Gagie, KPAA Tues. B	217
Ed Hull, H-E Webber	216	Dave Alexander, CW Saturday	216
John Ernie, CW National	216	Bill Ceely, KO National	215
Duke Puffer, KO National	215	Bernard Van Sice, CW Wednesday	215
Paul Yeager, CW No. 1	215	Joseph Smith, Bldg. 29 Main	214
Lon Barnes, KPAA Monday B-8	214	F. E. Cook, CW Supervisors	214
Bill Hickey, E&M	214	Bob Perry, KO American	214
Richard Roote, E&M	213	Bill Palleschi, H-E Ridge	213
George Brown, CW Friday	213	Art Pero, KPAA Trickworkers	213
Wes Van Graafeland, H-E Ridge	213	James Thompson, CW Office	213
Bill Schellinger, H-E Webber	213	Bernard Closser, CW No. 1	212
Tom Evans, E&M	212	Emido Vittore, H-E Saturday Shift	212
Art Berndt, H-E Ridge	212	Burt Oakes, H-E Webber	212
Ken Hitzke, H-E Ridge	212	Robert Lawrence, KO National	212
"Chub" Collins, KO National	211	George Gillette, KO National	211
Val Shellman, CW No. 1	211	Harold Dreschmidt, KPAA Fri. B-8	211
Clem Sedor, CW Saturday	211	Walt Gluchowicz, H-E Sat. Shift	211
Frank Koehler, H-E Sat. Shift	210	Harold Markham, CW Engineering	210
Walt Snell, KPAA Tues. B	209	Max Berg, KPAA West Kodak B-8	209
Charles Smith, E&M	209	Frank Smith, KPAA Friday B-8	209
Jerry Leverenz, CW Supervisors	209	Harold Brion, H-E Ridge	209
Barney Nelius, KO American	209	Charles Lembo, H-E Ridge	208
Donald Sturtz, CW No. 1	208	George Krewaitz, H-E Webber	208
Norm Heberger, H-E Webber	208	James Iota, CW Friday	207
Ken Dill, H-E Ridge	207	Frank Muszak, KPAA T'workers	207
Al Sill, KPAA Tues. B	207	Elmer Graef, CW Saturday	206
Ed Behndt, KPAA Trickworkers	206	Elwin Smith, H-E Ridge	206
Tom Gagie, KPAA Trickworkers	206	Joe Martin, KO National	205
Jack Almond, KPAA Mon. B-8	205	Bob Gilmer, KPAA Friday B-8	205
Stan Bissell, KO National	204	Walter Bull, KO National	204
Charles Newwood, CW Supervisors	204	Howard Reulbach, H-E Webber	204
John Muszak, KPAA Trickworkers	204	Bernie Ostrander, H-E Ridge	204

Stock Five Upsets KO; Vets Win

Avenging their only setback of the season, Rochester Branch Stock handed the Office Penpushers their first loss last week, 41-35. Outcome of the contest threw the KO Intraplant Basketball League race into a two-way deadlock.

The Shipping Vets gained their second verdict of the campaign over the Repair Fixers, 41-35, in the other skirmish on Dec. 3.

Art Frantz sparked the Stock offensive with 19 points and Bob Clarke swished the nets for 10 as the Rochester Branch quint jumped into a 13-8 first-quarter lead and was never headed. At half-time the Penpushers trailed 26-13, and at the three-quarter mark the score stood 38-22.

Ken Mason, the loop's leading point-getter, paced the Office outfit with 11, running his total to 56.

Duane Doty dumped in 18 to pace Shipping. The Vets held a scant 11-9 lead at the first-quarter turn and managed to cling to a 16-14 advantage midway. They increased their lead to 37-22 in the third period, and staved off a late Repair rally to win out.

LEAGUE STANDINGS

W	L	Pct.
Roch. Br. Stock	3 1	.750
Penpushers	3 1	.750
Shipping	2 2	.500
Repair	0 4	.000

Games, Dec. 17, KO Auditorium
5:45 p.m.—Penpushers vs. Shipping.
6:45 p.m.—Stock vs. Repair.

LEADING SCORERS

fg	ft	tp
Ken Mason, Office	22	12 56
Duane Doty, Shipping	18	7 43
Chuck Arnone, Shipping	16	3 35
Bob Clarke, Stock	14	5 33
Tommy Allison, Stock	12	6 30
Art Frantz, Stock	10	8 28
Frank Biggs, Stock	10	3 27
Tom Duignan, Shipping	12	3 27
Tom Ioannone, Shipping	11	5 27
Jim Arnold, Office	8	11 27

PIN STANDINGS

H-E Saturday Shift

W	L	W	L
Dept. 10	23 10	Dept. 17	18 15
Lesoks	22 11	Blanchards	15 18
Dept. 32-1	20 13	Lucky Strikes	13 20
B'chwarmers	19 14	Royals	11 19
Dept. 59	19 14	Stock X	11 19
Raiders	18 15	Tool Room	10 20
Dept. 16	18 15	Inspectors	8 19

KO American

W	L	W	L
Receiving	23 13	Maintenance	18 18
Roch. Br.	20 16	Shipping	16 20
Manuals	19 17	Kodakery	15 21
Traffic	18 18	Finishing	15 21

KPAA Kodak West B-8

W	L	W	L
Recovery	28 2	F.D. 5	11 19
Bldg. 203	26 4	Bldg. 129	10 20
Testing	19 11	Bldg. 204	8 22
Syn. Chem.	14 16	Bldg. 117	4 26

KORC Repair Shop

W	L	W	L
Cinés	19 14	Stock	17 16
Continental	18 15	Kodaks	15 18
Inspection	18 15	Sound	12 21

CW Office

W	L	W	L
Retinas	19 8	Bantams	12 15
Recordaks	15 12	Cinés	12 15
Enlargers	15 12	Brownies	10 17
Kodascopes	15 12	Recomars	10 17

KP Bldg. 29 Maintenance

W	L	W	L
Wrens	22 11	Jays	15 18
Orioles	18 15	Larks	15 18
Hawks	17 16	Eagles	15 18
Owls	16 17	Robins	14 19

Jim Anderson, CW Friday	203
Ralph Weller, CW Engineering	203
George Dash, CW No. 1	202
Fred Frens, CW Saturday	202
Jack Johnston, KPAA T'workers	202
Fred Barthelman, KO American	202
Ken Huff, KPAA Tues. B	201
Craig Jensen, KPAA Tues. B	201
Harold Jensen, KO National	201
Charles Welker, CW Supervisors	201
Harold Rowe, KO American	201
Bud Habes, H-E Ridge	201
Carl Koehler, H-E Webber	201
Cliff Sessler, KO National	201
Maynard Fox, KPAA Tues. B	200
Blase Nicosia, CW Saturday	200
Charlie Wilson, Bldg. 29 Main	200
Steve Sesny, CW Supervisors	200
Walt Cornish, H-E Saturday Shift	200
John Rockefeller, H-E Webber	200
Frank Kesel, KPAA Friday B-8	200
Ross Mitchell, H-E Ridge	200
Connie Schulz, CW Office	200

600 SERIES

Walter Szymula, CW Saturday	656
Mike Lanek, CW Saturday	632
George Houser, CW No. 1	627
Don Spitalo, KO National	619
Ed Olson, CW Friday	612
Ralph Weller, CW Engineering	606
Howard Deihl, KPAA Thurs. A	600
Roy Sill, KPAA Thurs. A	600
Joe Poweska, H-E Webber	600

WOMEN'S LEAGUES

High Individual Singles			
Lois Hankinson, KPAA 12-Team	182		
Betty Heisinger, H-E Girls	180		
Ora Marshall, H-E Girls	180		
Kay Emrich, KO Girls	167		
Ann Fedele, CW Wednesday	163		
Geraldine Osborne, CW Wednesday	161		
Jean Ester, KPAA 4-Team	151		