

Suggestion's Worth \$1200 To Park Man in 7th Period



\$1200 for Paul— Paul Muckstadt of KP's Dope Dept., right, discusses his idea for change in filter press plates with, from left, John Folwell, superintendent of the Chemical Plant; Richard Baybutt, assistant superintendent; and V. E. Kimmel, general foreman of the Dope Dept. Paul received \$1200.

THE SECOND highest award to be paid to a Kodak Park suggester during the first seven periods of 1948 went to Paul Muckstadt of the Dope Dept. recently.

Muckstadt received a check for \$1200 for an idea approved in the seventh period dealing with a change in the procedure of dressing Dope Dept. filter press plates. More dope can be filtered by the application of the principles outlined in his suggestion without sacrificing quality, it was explained. In addition to these benefits, the number of plate changes is reduced and a saving in solvents is effected as a result of the suggestion.

Formerly a member of Hawk-Eye Works, Paul went to Kodak Park in 1939 and was employed in the Powder & Solution Dept. until 1941 when he transferred to the Dope Dept. Since participating in the Park's Suggestion Plan, he has received awards for three other suggestion ideas.

14th Kodak Salon Slated

The 14th Kodak International Salon of Photography—open to Company men and women throughout the world—suspended in 1938 because of the war, is being revived this year with the largest prize list in its history.

The event is being sponsored by seven Company camera clubs—Kodak Camera Club and the Hawk-Eye Camera Club of Rochester; Kodak Works Photographic Society, Harrow, England; Kodak Staff Photographic Society, London; Kodak Heights Camera Club, Toronto, Canada; Kodak Staff Photographic

Society, Sydney, Australia; Kodak Works Camera Club, Melbourne, Australia.

Entries this year are being sent to the Kodak Camera Club at Kodak Park. Deadline for receiving the entries has been set for Nov. 1. Following the judging, the winning

(Continued on Page 4)



Entries on Way— These three members of the Kodak Camera Club staff are mailing out entry blanks to Company overseas branches for the 14th Kodak International Salon of Photography. From left are Lois Tuttle, Neva Newman, Jeanne Hecker.

Micro-File Machines Added To Kodagraph Products Line

Marking further expansion in the field of industrial photography, Kodak announces the addition of Micro-File machines, film and accessories to its Kodagraph line of products.

The Kodagraph machines are primarily for 35mm. film, but may be converted to 16mm. use with accessory parts. Kodagraph Micro-File Film comes in 100-foot rolls.

The new Kodagraph line will include four different models of microfilming machines for photographing engineering drawings and record files on both 16- and 35-mm. film, each for a specific field of application, including a portable unit for use in the field.

Other Units

There is also a Kodagraph Film Reader for viewing film on a translucent screen, a Kodagraph Portable Projector for viewing film on a screen or wall and a Kodagraph Micro-File Enlarger for reduced, actual size or enlarged duplicates on Kodagraph Projection Paper.

Kodagraph Micro-File Machines are expected to see wide usage in the industrial field where the Company's line of Kodagraph reproduction papers has made such rapid strides since its introduction only last fall. Adding the microfilmers to this line is part of a long-range Company plan to enable its Industrial Sales Division to offer to industry as complete a photographic program as possible for photoreproduction.

Engineering departments, already large users of Kodagraph papers, are expected to employ the machines for the protection and duplication of engineering drawings, floor plans, sketches, maps, etc. Industry, in general, too, is interested in putting its business records, correspondence, etc., on film for protective purposes and to save



Popular Model— This is expected to be one of the most widely used of the Kodagraph Micro-File Machines, one of four models offered in the line. It will handle industrial drawings up to 26½ by 36¼ inches. With an accessory copy board, it is adaptable for drawings as large as 37½ by 52½ inches.

valuable space.

In the engineering drawing field alone, potential users will recover much lost filing space by disposing of old, obsolete drawings after they are microfilmed. It will enable them also to reproduce old, faded,

worn and opaque drawings to better than original quality.

An advertising program is being mapped featuring Kodagraph microfilming advantages, including convenience, safety, permanence and space-saving.

Metal Fingers Crease Bellows for Cameras In Machine Devised by CW Technicians

Mechanical fingers now are creasing camera bellows.

They are featured parts of a machine called the bellows folder that helps turn out these camera components in Dept. 32 at CW.

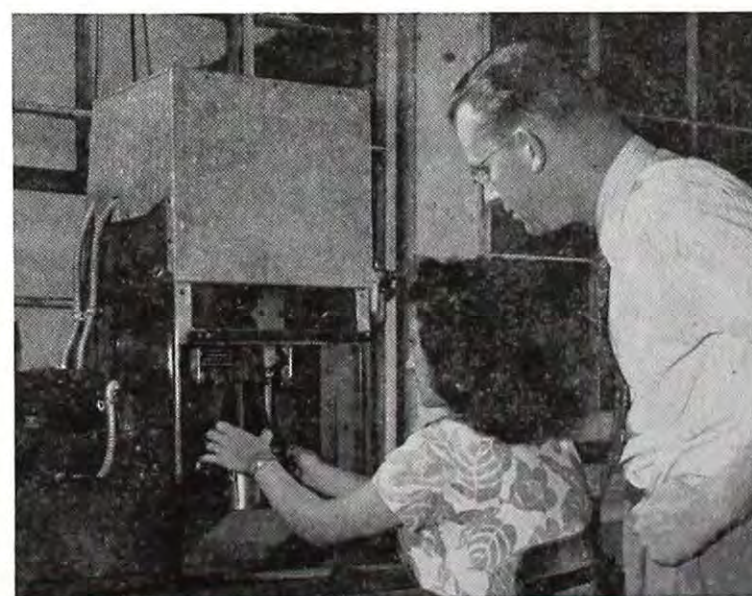
Nimble-fingered operators had been doing the creasing work on the bellows since folding cameras went into production in 1890. Increasing demands for cameras in recent years, however, brought the problem of quickened production of the bellows to the attention of the CW Production Engineering Lab where the bellows-folding machine became a reality.

How It Operates

Here's how the handy instrument works: The operator first warms the shaped bellows in a small heater to make the synthetic leather softer and more pliable. Then she clamps it in an upright position with the large end down on the metal base or platen.

When a transparent safety door is closed it actuates a switch that raises the bellows to a specified height. The small end rests against a tube and compressed air is admitted into the bellows.

And here's where the mechanical fingers do their work. When the bellows comes into this first raised



Fast Folding— Mae Pedano of Dept. 32 at Camera Works operates the bellows folder as Charles Weaver of CW's Production Engineering Lab watches the working of the machine. Weaver helped to devise the folder for Dept. 32.

off to fit exactly into the design-position, it sets inside the fingers or metal blades which are stepped

nated crease areas on the bellows. At this point the operator steps

(Continued on Page 4)

Study Flowers First, Then Shoot, Says Fred



Grows 'em and Snaps 'em—Fred Brehm, with light reflector in hand, examines his rose climber. At left is a picture of a night-blooming cereus which Fred took over 50 years ago with a homemade camera and light from a kerosene lamp. At right is a cluster of roses pictured by Fred.

There are only two requisites for obtaining beautiful pictures of flowers, according to Fred Brehm, former CW superintendent and longtime photographic instructor at KO and RIT.

Know your flowers and know your equipment is the advice of the retired Kodaker.

Fred combined his two hobbies, his garden and photography, to become an expert in picturing flowers right in his own backyard.

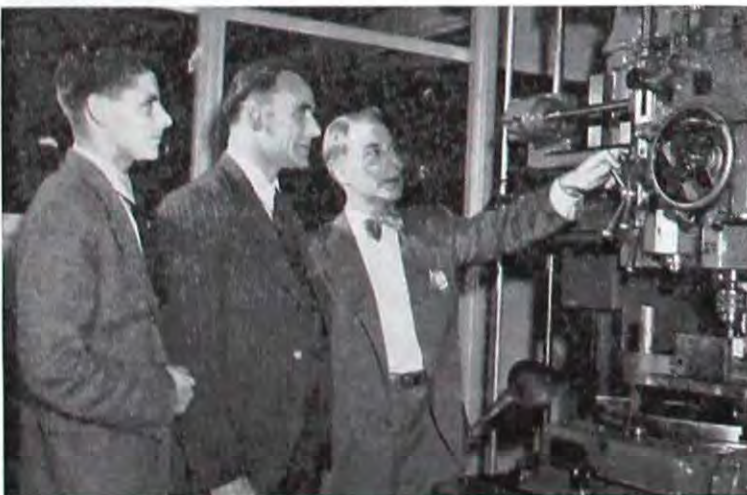
His contention is that most people look at flowers without noticing the detail of their beauty. Planting a garden and watching the flowers bud and open teaches botany and a love of botany, according to Fred.

Photographic equipment can be simple or complex, he says. The main thing is to know what can

be expected of it. For instance, portrait lens attachments will be required for closeups, but fine pictures can be obtained with standard lenses.

Study the background, too, he continued. The earth is good for some, blue sky and clouds for others, black velvet for still others. Light may be increased and shadows diminished by such simple reflectors as white cloth or sheets of crinkled tinfoil.

The last few years, Fred has concentrated on color pictures of roses.



Here from England—Two Kodak Ltd. men are visiting here two months for the purpose of studying all phases of Camera Works and Hawk-Eye production. They are from left Dr. John Tearle, assistant superintendent of the Wembley Factory of Kodak Ltd., England, and John Hardy, superintendent of the Harrow Mechanical Production Division. Larry Martin, assistant to the plant manager of Camera Works, points out to them a feature of the precision jig borer in the CW Tool Room.

Byrnes Family Boasts 3 Generations at EK, 2 at Park and New Arrival at Kodak Office

The Byrnes family is strictly a Kodak family—grandad, dad and son.

Grandad George Byrnes is second of the Byrneses in length of service with Kodak. He has been in KP's Print Shop since coming to Rochester 13 years ago from Connecticut.

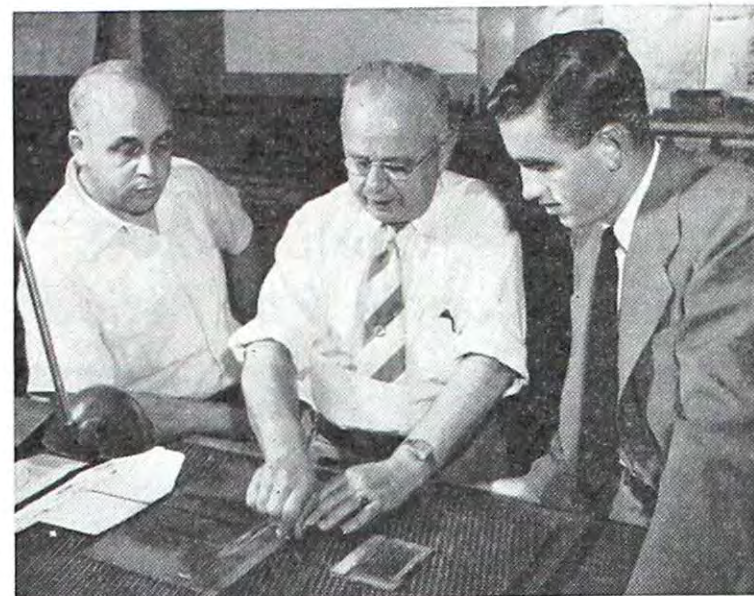
His son, Clinton, preceded him to Kodak Park by nine months. Clinton is concerned with production maintenance in the Film Emulsion Coating Dept.

Son's at KO

Now, George's grandson and Clinton's son, Clint, has joined KO's Training Dept. and is at present located in the Rochester Branch. Graduated from the U. of R. in June with a B. A. in economics and business administration, he had spent one summer vacation at Kodak Park West.

Clint's college education was interrupted by the war, and from 1943 through 1946 he was in the Air Force. As a first lieutenant and communications officer, he supervised the installation of blind landing equipment in the Pacific Theater and then had charge of a radio station at an airbase in Japan.

Grandad George also has two daughters at Kodak Park. They are Trudy Boylan of Bldg. 6, and Dale



Three Generations—Grandad George Byrnes looks up a form for the press on the stone in the Printing Dept. as Son Clinton, left, of KP and Grandson Clint of KO watch.

Schudel, Bldg. 65. Both joined the Park during War II years.

The fourth generation of Byrneses won't be ready to come

to Kodak for some time. Clint's daughter, Nancy, is just a toddler, but he says she'll probably be with the Company some day, too.

Photo Patter

Shift to Sidelighted Snaps To Cut Shadow Areas

Many amateur photographers still insist on working with their backs to the sun for all shots.

We suspect that this is in part a hangover from the early days of the box camera. Film speeds were slow in those days. To picture a person or group of people acceptably, full frontal lighting was necessary. Only when the subject faced the sun, and the camera was pointed away from it, could a good picture be made.

But with fast films today more and more camera users are finding that better results can be had by picturing people when the sun strikes them from one side or directly behind.

Prevents Squint

Sidelighting or backlighting tends to reduce the shadows full frontal lighting often produces. A second point in favor of side- or backlighting is that the subject is less likely to squint than when facing the sun.

Today's picture serves as a good illustration of a sidelighted shot.

Visitors Study EK Methods

Two men from Kodak Ltd. in England are here to study CW and H-E production procedures. They are John Hardy, superintendent of the Mechanical Production plant, which corresponds to Rochester's Camera Works, and Dr. John Tearle, who is assistant head of the Wembley Factory, Kodak Ltd.'s optical plant.

Primarily concerned with the manufacture of products similar to their own, they also are interested in seeing new products in their fields. Production control, methods and administration will be of special interest to them during their two-month stay.

Hardy's purpose in Rochester is twofold. He also will meet the three couples who cared for his two children over a period of five war years. They are the Howard Pattersons, CW; Mr. and Mrs. Paul Vittum, KP, and the Robert Sheridans, KP.

The Vittums and Sheridans, who made a home for Hardy's daughter, now 18, will be interested to know that she is engaged to be married. The Pattersons will hear more about their Kodakid, now 21, who is in the Army.

Kodakwiz



(Answer on Page 4)

This is a:

- Kodak Reflex Camera.
- Jiffy Kodak Six-20 Camera.
- Brownie Flash Six-20 Camera.

Gunnery instructor: "Now listen, you guys, this new bullet will penetrate three inches of wood, so keep your heads down."



Sidelighting—A dramatic quality and flattering touch are added to the portrait when sidelighting is used. Too many amateur photographers fail to make use of this lighting.

Dept. Old-Timers to Picnic



Here's the Place—A. W. Crittenden, left, and Urban Statt, also standing, discuss with Oscar and Mrs. Johnson arrangements for the fifth annual old-timers' outing of the Film Emulsion Melting Dept. It will be held Saturday, Aug. 14, at Shady Lawns, the Johnsons' home at Clarkson Corners on the Ridge.

Hubby—"What possessed you to choose lemon color for your new gown?"

Wife—"It was because I had such a job squeezing the money for it out of you."

"You say you found a letter in a woman's handwriting in my pocket this morning. I'm sure I don't know how it got there."

"I do! I gave it to you to mail three weeks ago!"

Park Pioneers' Club Prepares Life Cards For Active and Retired Kodakers on Roster

In for life—that's the pleasant sentence being meted out to approximately 2207 Kodak Park men and women, all members of its Pioneers' Club. Now in the process of preparation are life membership cards for all those who have completed 25 years or more of service with the Company.

The largest number of "lifers" is made up of those in the 25- to 39-year category, 1573 of whom are listed on the club's rolls. In the same service span, but retired, are 419 members, while 66 others have records ranging from 40 to 49 years. Oldest in the club are three men who retired after completing 50 years with Kodak.

284 Women on Rolls

It was pointed out that the life membership cards will go to some 1923 men and 284 women, with the total figure expected to be increased by close to 84 Park folks who will observe their 25th service anniversaries before Jan. 1, 1949.

Oscar Zabel, Bldg. 23, president of the club, is supervising the distribution of life membership cards, assisted by A. J. Eilinger, Bldg. 48, vice-president; A. J. Schell, Bldg. 2, secretary; and Frances C. Holihan, Bldg. 26, treasurer.



Life Memberships—Preparing the life membership cards in the Kodak Park Pioneers' Club are, from left, Ruth MacRae, Bldg. 28; Frances Holihan, Bldg. 26, club treasurer, and Oscar Zabel, Bldg. 23, president. The cards will be sent to all members of the club made up of folks with 25 years' service or more.

Never yawn before a guest. Let the guest yawn first.

The less a man knows—the more he tells.

It's in the Park: 40 Fete Pease . . . Jacked Jeep Confuses Connell . . . Ted's Top Ridge Fan . . . Graham Favors Fish Mart

George Esterley, Testing, received his 25-year Eastman service pin from D. W. Rupert, Testing Dept. superintendent, as well as a gift presented by Lot Wilder on behalf of his associates. George



D. W. Rupert, Testing Dept. superintendent, presents 25-year pin to George Esterley. At right is R. S. Scott, superintendent of the Cine-Processing Dept. Rupert also received gifts.

has been with Testing since 1947, previously having been a member of the Cine-Kodak Processing Dept. . . . Marie McKenna, Bldg. 26, and her husband, Jim, Bldg. 23, are preparing to renovate the interior of their home following fire damage caused by defective wiring in their electric toaster. . . . Dr. Arnold Weissberger, Synthetic Organic Research Laboratory, and Mrs. Weissberger attended the Gordon Research Conference at Colby Junior College, New London, N.H., over the July 4 weekend. Dr. Weissberger presented a paper on "Mechanisms of Some Auto-Oxidation Reactions." . . . George Schick, E&M Accounting, has returned to his desk after a six-month illness. . . . Ann Hoskins, Mary Louise Reinhardt and Joan Hallett have returned to the Medical Dept. for the summer.

Anna Chesler has left the Printing Dept. to devote her full time to domestic duties. . . . Emerson Bowen, Employment Office, recently landed a 24-inch pike while on a weekend fishing trip to Black Lake in the Adirondacks with his wife. Em reports that he fished all

day long without luck, pulling in his prize catch as the sun went down. . . . Ruth Collamer Cort is back from her two weeks' honeymoon in Washington, D.C. . . . Dr. C. F. H. Allen, Synthetic Organic Research Laboratory, and Mrs. Allen are spending a three-week vacation in Maine. . . . An impromptu party was held July 9 in the Dope Experimental Dept., Bldg. 103, to celebrate the completion of 25 years of service by Milford Pease. Richard Baybutt, assistant superintendent of the Chemical Plant, made the Eastman medal presentation to Pease, who has been in the same department during his entire span of service. Refreshments were served to approximately 40 persons. . . . Clarence Raymond, Printing, away from his duties since April, following an operation, dropped in to greet his friends in the department July 13. He hopes to be back at his post soon. Also recuperating at home after surgery is Printing's Alex Dembeck.

A sadly frustrated young man one day recently was Edward Connell, Power, when his projected take-off in the department jeep for West Kodak failed to materialize. Ex-G.I. Ed strained his mechanical ingenuity and taxed his vocabulary in an effort to start the

Coating. Rollo H. Wilkinson died July 28 after a brief illness. He came to the Park in 1929 and served in the Yard Dept.

pesky vehicle, but all to no avail. Some practical joker had blocked the rear wheels, keeping the jeep stationary until a helpful bystander suggested using the four-wheel drive. . . . A jolly good time was reported by all who attended the old-fashioned picnic held at Bay View July 17 by the Printing Dept. Jane Boyer served as chairman of the arrangements committee which included Belle Ford, Doris Cooper, Eileen Tubbs, Frances Laging, Edna Horrocks, Jane Parsons, Wally King, Bob Waples and Ed Magin.

Gunter Jahn, formerly of Film Planning & Record and now living in Bridgeport, Conn., writes that he will be married Aug. 14. He was a member of the 1947 KP team in the Rochester Industrial Tennis League. . . . Florence Kirk, Export Billing, Bldg. 56, and her husband, Howard, Film Emulsion, Bldg. 30, are motoring to New York Aug. 6 to meet their daughter, Martha, who is returning from an eight weeks' bicycle tour of Europe. Martha is a student at Beaver College. Her sister, Lewessa, is a member of the Research Laboratories, Bldg. 59.

Members of the Plate Dept., their families and friends, held a picnic July 17 at the Ira Jacobson Legion Post home. A barbecue dinner, novelty games and dancing made up a busy day. On the committee were Millie Ernise, Ray Hayes, Leona Smolarek, Betty Hartle and Cal Tripp. . . . Konrad Strasser, Machine Shop, has left on a round-trip flight to Switzerland where he will visit relatives. . . . Lois DeHond, Sheet Film Packing; Irene Johnson, Nitrate Cine; and Virginia Wagemaker, Bldg. 99, recently spent a week at Fourth



Here are members of the committee that arranged the recent Plate Dept. picnic. From left, Millie Ernise, Raymond Hayes, Leona Smolarek, Betty Hartle and Calvin Tripp.



George Shannon of Roll Coating inspects one of his Easter lilies which bloomed for a second time this year. The new flowers came in midsummer—a horticultural rarity.

Lake in the Adirondacks. . . . Avis Diable has left the Roll Coating Dept. to take up household duties in Williamson, N.Y. . . . Peter Bianchi, Gelatine, is back after a two weeks' visit in New Orleans. Another member of the department, Reta Butler, enjoyed some fine fishing at Lake Mazinau in Canada. . . . Janet Lawrence, a student at Keuka College, is back for the summer months in Export Billing, Bldg. 56. Her father, Al, is in Export Shipping.

A loyal supporter of all KPAA Ridge Noon-Hour League games is Ted Chamberlain, retired member of the Metal Shop, who invariably occupies a seat along the first-base line. . . . Doris Mayer and Sally Wills, Medical, are looking refreshed after their recent vacations, while Margaret Cusack, Betty Dunn and Monica Nolan are enjoying theirs at widely scattered points. . . . A swell time was enjoyed by members of the Portrait Sheet Film Dept., Bldg. 12, at their picnic June 26 at the St. Paul Exempts' grounds. Games and refreshments and a picnic dinner were on the program. Among the guests were two retired members, Louis Reese and Fred Meigs. . . . Earl Graham and Arnold Appleton, Bldg. 120, recently spent their vacations in Canada, where Earl, who bought a fishing license, finds it cheaper to buy the fish.

Anna Koser, Sheet Film Packing, is spending her vacation with her son, a World War II veteran,

who is ill in a hospital in Williamsport, Pa. Another son is serving with the U. S. Navy in the Atlantic area. . . . Burrell Robertshaw, supervisor of the E&M section of the Accounting Dept., has been elected director of education for the Rochester Chapter, National Association of Cost Accountants. He replaces Maurice Moss, Accounting Dept. supervisor, who has transferred to the Eastman Gelatine Corporation. . . . A. W. Crittenden, Emulsion Melting, who recently completed 20 years' service with the New York State Guard, has been assigned to the Reserve list with a commission of major. . . . Back home after recent vacations are Armand Kirchhoff, Lorraine Larrabee and Margaret Christensen, all of Sheet Film Packing.

Easter lilies usually bloom but once in late winter, and no one was more surprised than George Shannon, Roll Coating, who discovered three large white blooms in his garden recently, the second time they have flowered this year. . . . The annual picnic of the Paper Finishing Depts. will be held at Glen Edyth on Saturday, Aug. 14. A buffet dinner, to be served at 1:30, will be followed by a fun-filled program of entertainment, including a ball game, horseshoe pitching and novelty games. . . . Pat Crino, of the Medical Dept.'s night staff, has returned from a vacation trip to Arizona. . . . Ben Schove, Roll Film Spooling, is spending two weeks at Buck Lake in Canada, where he hopes to get in some fine fishing.

Little Bobby Selbert, son of Chet Selbert, Electric Shop, piloted his racer to second-place win in one of the heats in the annual T-U Soap Box Derby at Durand-Eastman Park July 17. Bobby also snared a third place in one of the heats in the losers' bracket. . . . Filomena Agostinelli, Roll Film Spooling, has returned to her duties after a two months' illness. . . . A recent trip to New York City by Charles Goldrey, Industrial Engineering, resulted in a meeting with Ed Shille, formerly of the Cine & Sheet Film Dept. and now with Motion Picture Sales in the Big City. Ed sends his greetings to his many friends at Kodak Park.



Ed Shille

Two Park Men Pass

Two Kodak Park men died recently. Horace F. Smith of the Roll Coating Dept. died July 27 after being out ill since September 1946. He joined the Park in 1927 and was in the Industrial Economy Dept. before transferring to Roll Coating where he served as a supervisor. A son, Richard, also is in Roll

Kodak Camera Club Plans Outing



Picnic Prizes— Trying out some of the prizes to be given away at the Kodak Camera Club picnic Aug. 21 are, from left: Donna Jane Klein, Color Control, KP; Beatrice Martin, E&M, KP, and Earl Wallace, KP Safety, who is chairman of the committee.

Kodakwiz

ANSWER



(Question on Page 2)

This is a Kodak Reflex Camera, one of the newest in the Kodak line. It has shutter speeds from 1/2 to 1/200 second and features built-in flash synchronization. Both lenses are Kodak Anastigmat f/3.5's.

E. P. Curtis Attends Defense Session

Evidence of several witnesses on the subject of reorganization of the national defense setup was weighed recently by Edward P. Curtis, EK vice-president, in Washington.

Curtis sat as a member of a sub-committee of the Hoover Commission which is studying organization of all government services.

Tricky Device Folds Bellows

(Continued from Page 1)

on a pedal and the platen pushes the bellows and blades higher in the machine for the final step in the creasing, forcing the blades in against the bellows to form the folds. Here a timing switch automatically holds the bellows in this position for a few seconds while it takes a "set." Then the blades recede and the platen drops with the creased bellows so that the operator may remove the unit from the machine.

The bellows then is placed in a small box press and moved over to a second operator who inspects it and attaches paper tape to keep it in the compressed position.

The entire operation requires such a brief period that 1500 units can be turned out by the machine in a day.

A new machine of this type is nearing completion at CW for use in folding the bellows for the new Kodak Tourist Camera.

"I understand your wife came from a large family."

"She didn't exactly 'come from'—she brought it with her!"

Picnic Set Aug. 21 At Seneca Park

Kodak Camera Club members and their families will make merry on Saturday afternoon, Aug. 21, when they hold their picnic in the lower area of Seneca Park from 2 to 6 p.m.

Heralded as one of the best affairs ever held by the group, the outing will feature a beef barbecue and corn on the cob, as well as plenty of soda pop, ice cream, peanuts and candy. Among entertainment features listed is a hole-in-one golf tournament, as well as novelty races and games of all kinds, with prizes galore for young and old. Adding interest to the fun will be a monochrome and color picture-taking competition for prizes, in which everyone will be invited to participate. Full details will be announced at the start of the afternoon's program.

Wallace Heads Committee

Earl Wallace, Safety, is chairman of the committee in charge, assisted by Ray Englert, B-23; Mel Wright, B-4; Leo Gallagher, B-23; Lois Tuttle, B-4; Jim Gallery, B-29; Everett Wadman, B-12; Harold Hudson, B-59; Jack Mitchell, B-57; Jeannette Klute, B-65; Anna Grum, B-4; Bob Orne, B-23; Jim Cropp, B-57; Earl Esty, B-50; Bob LaFave, B-29; Neva Newman, B-4; Jeanne Hecker, B-4; Joseph Hale, B-14; Dan Lawrence, B-57; Art Wignall, B-23; W. F. Kaiser, B-23; Marvin Simonsen, B-57; Irv Howland, B-6; Ken Brenner, B-23; Bob Kleinschmidt, B-57; Donna Klein, B-65; and Beatrice Martin, B-23.

KODAKERY

Vol. 6, No. 31

Aug. 5, 1948

T. M. Reg. U. S. Pat. Office
Published weekly at Rochester, N. Y.,
with offices at 343 State Street
and printed at Kodak Park.

EDITOR - BOB LAWRENCE

Associate editors—Art Wood, Wilmer A. Brown, Division editors—J. E. Shynock, Kodak Park; Sidney P. Hines, Camera Works; John Connell, Hawk-Eye; Kaye M. Lechleitner, Kodak Office; Out-of-Rochester editor—Dorothy E. Craig, Staff photographers—Norman Zempel, Jim Park.

Plans Underway for EK Salon of Photography

(Continued from Page 1)

entries will be exhibited at the Rochester Memorial Art Gallery, in the Kodak Park auditorium and

the State Street auditorium.

Entry blanks were mailed out to Kodak divisions all over the globe last week, giving all Company people an opportunity to enter the salon.

In Five Sections

The salon is divided into five sections: (1) Pictorial Monochrome Prints; (2) Pictorial Color Prints; (3) Nature Monochrome Prints; (4) Pictorial Color Transparencies; (5) Nature Color Transparencies.

Prints, which must be the work of the entrant, should be mounted on 16 by 20 mounts, each marked in block letters on the back with the name and address of the maker, the title, the section and a number to correspond with the entry form listing. Prints in the color section may be either hand-colored prints or manufacturers' multicolor prints, if the original monochrome print or color transparency is the work of the entrant.

Must Mark Transparencies

Color transparencies must be marked as are the prints. Pictorial color transparencies (Section 4) may be 2 by 2 slides or larger, while nature color transparencies (Section 5) must be 2 x 2 slides.

Not more than four prints or four transparencies may be submitted by an entrant in any one section. Prints or transparencies accepted in any previous Kodak International Salon are not eligible for competition.

Photographs made during regular working hours or while on photographic assignment for any



Spreads Knowledge of Norway—Hjordis Kittel Parker, right, shows a brochure of her illustrated lecture on Norway to Ken Edwards, EK adviser on non-theatrical films.

Pictures Hold Key to Peace, Norwegian Lecturer Believes

Hjordis Kittel Parker believes pictures can cement world peace.

She feels it so strongly that this year she has lectured to U. S. audiences on Norway and to Norwegians on Southern California.

Visiting KO recently, two days after docking in New York, she declared she had spent the last two and a half months in Norway making a Kodachrome motion picture on daily life in Norway's cities, industrial areas, fishing and farming communities and its culture.

Working in connection with the Norwegian State Travel Association, she shot 4000 feet of Kodachrome which she hopes to make into an 1800-foot lecture. In addition, she has approximately 400 Kodaslide taken on her trip.

Born in Norway and educated in the U. S., she first became interested in giving illustrated lectures three years ago. She attended a talk on Norway so boring that it harmed the country, she said.

Now her slides are used as visual aids in geography classes in West Coast schools and much of her time is spent lecturing and showing her pictures to adult groups. She usually dresses in Norwegian peasant costume to give additional atmosphere to her talks.

Most American audiences, she

declared, express amazement that the cities are modern and that everything isn't covered with snow in Norway. Actually, she declared, water for swimming is often warmer than off California.

Everyone in Norway these days, she commented, feels much unrest and hopes that today's efforts to restore battered sections of Norway will not be in vain.

Softball Standings

| KPAW WEST KODAK | | | | |
|-----------------|---|---|---|-----|
| | W | L | T | Pts |
| Renegades | 3 | 2 | 1 | 7 |
| Wood Cellulose | 3 | 3 | 0 | 6 |
| Syn. Chemistry | 2 | 2 | 1 | 5 |
| F. D. 5 | 2 | 3 | 0 | 4 |

| KPAW LAKE AVENUE | | | | |
|------------------|---|---|---|-----|
| | W | L | T | Pts |
| Giants | 3 | 0 | 2 | 8 |
| Yankees | 3 | 0 | 2 | 8 |
| Dodgers | 2 | 4 | 0 | 4 |
| Birds | 0 | 4 | 0 | 0 |

| KPAW RIDGE | | | | |
|------------|---|---|---|-----|
| | W | L | T | Pts |
| Royals | 4 | 1 | 0 | 8 |
| Bears | 3 | 2 | 0 | 6 |
| Wings | 3 | 3 | 0 | 6 |
| Bisons | 1 | 5 | 0 | 2 |

| KPAW TWILIGHT American Division | | | | |
|---------------------------------|---|---|--------------|-----|
| | W | L | T | Pts |
| Kodacolor | 7 | 1 | Emul. Making | 3 5 |
| Engineering | 6 | 2 | Bldg. 30 | 2 5 |
| F. D. 10 | 6 | 2 | Syn. Chem. | 1 5 |
| Organic Ridge | 5 | 3 | Recovery | 0 7 |

| National Division | | | | |
|-------------------|---|---|--------------|-----|
| | W | L | T | Pts |
| Kodacolor | 7 | 1 | Phys. Test. | 3 5 |
| Paper Service | 6 | 2 | Emcos | 3 5 |
| Printing | 5 | 3 | Cafeteria | 2 6 |
| Research | 4 | 4 | Sensitometry | 2 6 |

| CW INTRAPLANT National | | | | |
|------------------------|---|---|----------------|-----|
| | W | L | T | Pts |
| WW & Smith | 5 | 0 | Milling | 3 3 |
| Depts. 37-56 | 4 | 2 | Insp. & Stock | 2 4 |
| Tool Room | 3 | 1 | J Bldg. | 2 4 |
| Dpts. 20-21-Sh. | 3 | 3 | NOD St'ck & R. | 0 5 |

| National Division | | | | |
|-------------------|---|---|---------------|-----|
| | W | L | T | Pts |
| NOD Eng. | 5 | 0 | Dev. & Office | 2 3 |
| Lacquer | 4 | 1 | Engineering | 1 3 |
| Plating | 4 | 2 | Press | 1 4 |
| Maintenance | 3 | 2 | NOD Product. | 0 5 |

RESULTS LAST WEEK
National Division—Depts. 20-21-Shutter, 13, J Bldg., 5; Inspection & Stock, 3, Depts. 37-56, 12; NOD Stock & Rec., 3, Milling, 16; WW & Smith vs. Tool Room postponed; American Division—NOD Engineering vs. NOD Production postponed; Dev. & Office, 3, Plating, 15; Lacquer, 4, Press, 0; Maintenance vs. Engineering postponed.

Dusty Horseshoers

| | W | L |
|-----------------------|-----|-----|
| Kodak Park | 233 | 92 |
| Camera Works | 196 | 104 |
| Bausch & Lomb | 175 | 125 |
| Ritters | 159 | 141 |
| Gleason Works | 136 | 139 |
| Rochester Products | 163 | 187 |
| Distillation Products | 106 | 194 |
| Hawk-Eye | 106 | 194 |
| Taylor Instrument | 101 | 199 |

GAMES LAST WEEK—Roch. Prod., 19, DPI, 6; CW, 21, Taylors, 4; Roch. Prod., 15, Hawk-Eye, 10; Ritters, 19, Taylors, 9; Kodak Park, 21, Balcos, 4; Balcos, 15, DPI, 10, Kodak Park, 20, Roch. Prod. 5.

Rifle Instructor: "How come you get five bull's eyes? The range is 600 yards but your sights are set for 300 yards."

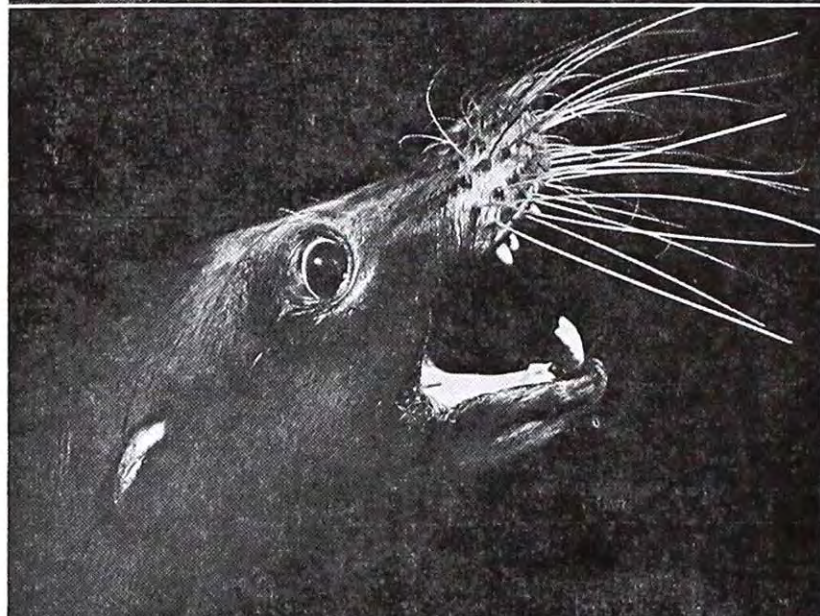
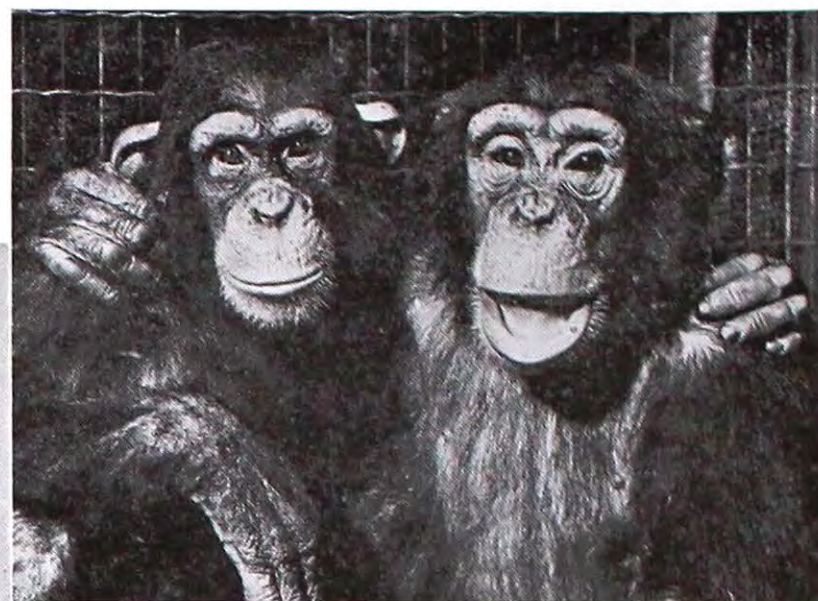
Mountaineer Rookie: "See that rock halfway there? I'm bouncin' 'em offa that."

J.H.



Flicker Photog— Recognize the dapper cameraman in this picture? He's Jack Collins of KO's Photographic Illustrations Division. He was shooting a comedy for the old Eagle Film Company back in 1914, the ever-present stogie clamped between his teeth. That's the director in the center telling Rex Adams (with the shootin' iron) and Tweedle-Dee of the French comedy team of Tweedle-Dee and Tweedle-Dum how it's done. The locale is the City Park in Jacksonville, Fla.

Photos by Ylla



Ylla and Her Animals

Photographic sensitized materials are to Photographer Ylla the paintbrush and palette of the artist. This Roumanian-born naturalized American is recognized as an outstanding photographer of animals, and her pictures have been featured in many magazines, including two covers on Life. After working with all kinds of animals in both this country and Europe for several years, Ylla has infinite patience with them and no fear. And she has been bitten by many of her subjects, she admits!





Mary Upchurch and her collection of stuffed dolls.

Park Woman's Hobby Began With Experiment

A doll for her daughter. That's what Mary Upchurch, Record Room, KP Bldg. 14, wanted 15 years ago. And that's what started her on the road to a new hobby . . . a hobby that's grown to such heights that Mary's daughter, Mona Claire, now 17, has a collection of every variety of animal and a pair of dolls, boy and girl, from almost every country in the world.

Learns to Sew

Mary had never taken a lesson in sewing, but her first attempt at making stuffed dolls turned out so

successfully that she has kept it up all these years. Today many of the dolls and animals which she has made for friends are owned by people in a number of states and Canada. One of her colored dolls, the size of a one-year-old baby, is owned upon request by Rochester's Carver House, Negro youth center.

Her daughter's favorite is a cowboy named Scrappy. "Scrappy's more of a cowhand now," Mary told, adding that the once-hand-some cowboy has lost his original color because of strenuous play.

Kids Love Clown

One doll which has caught the eye of neighborhood children is a three-foot, gangly clown clothed in a gay orange and aqua costume. It's funny face is embroidered, as are all the other doll faces.

Mary first sketches the features on the material and embroiders over the lines she has drawn. All doll ideas and dress patterns she has designed herself. Prior to making a boy and girl doll of another land, however, she studies the children's dress of that country. This insures accuracy in details.

In her daughter's collection is a life-size baby doll dressed in delicate clothing. A fascinating animal is a plaid kangaroo she has made. It's complete with pouch and baby kangaroo. Raggedy Ann and Andy are a favorite pair, too.

A Trick to Remember

"It doesn't take long at all to make one," Mary revealed. She usually finishes a doll in an afternoon. The whole secret to making the sturdy things, she said, is to stuff only a little cotton at a time. This keeps them from matting and becoming lumpy, she explained.

The clothes she makes for the dolls are as fine work as she would do on her own clothes. As a matter of fact, the versatile KP-er does make all her own clothes, including coats.

The Way We Heard It

FOR A CHANGE—Give variety to vegetables by adding chopped chives, parsley, peanuts or almonds to melted butter or oleo poured over them.

A REMINDER — Chill dishes on which cold foods are to be served. Hot foods will stay hot longer if served on dishes that have been preheated.

Gen Gets Requests for Blanket Instructions

When Gen DeVeny, KO Editorial Service Bureau, decided to knit for her cousin's baby, she wanted it to be something simple.

Although the carriage robe she's making appears complicated, it's really quite elementary, Gen says.

Having admired her work, many of her friends have asked her for the directions. They appear below.

Approximately 8 oz. of worsted knitting wool, 4-ply, is required; 1 pr. of No. 9 needles, 14 in. in length, and 1 coarse crochet hook to crochet the border of the robe.

Abbreviations used in the directions are k for knit, st for stitch, ch for chain, sc for single crochet and tr c for treble crochet.

Carriage Robe

Cast on 126 sts. K row 1, k row 2. Row 3: k 1. *Wrap yarn around needle 3 times, k 1. Repeat from * across row. Row 4: *(Slip the first st without knitting onto the right-hand needle. Drop the wrapped yarn in between sts.) Repeat this 6 times more, so that there are 7 long slipped sts on the right-hand needle. Pass the 2nd, 3rd and 4th slipped sts over the last 3, and place all 7 back on the left-hand needle. Now k each st separately. Repeat from * across row, taking 6 slipped sts each time. K off last slipped st of row. Repeat these 4 rows 17 more times. K 2 rows and cast off loosely.

Crocheted Edge

Starting at corner of robe, ch 4 * yarn around hook twice. Skip 2 sts on edge of robe. Insert hook in next st, picking up whole st. Draw loop through this st. Draw 1 loop through next 2 loops on hook (3 loops remaining on hook).

Yarn over hook, skip next 2 sts on robe. Insert hook in next st, draw yarn through this st, yarn

over, draw loop through first 2 loops on hook, draw loop through next 2 loops on hook, draw loop through next 2 loops on hook, draw loop through last 2 loops on hook.

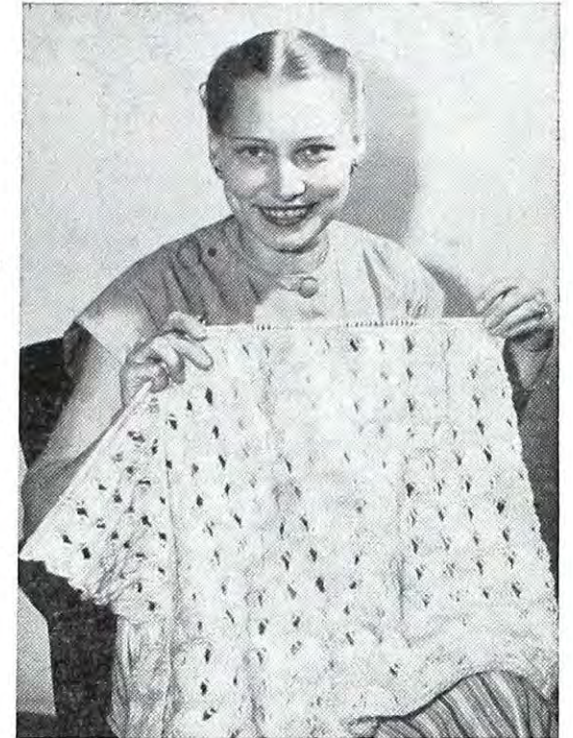
Ch. 3. Yarn over, insert hook through loose st on top of cross, then under cross. Drawn yarn through, draw loop through first 2 loops on hook, draw loop through last 2 loops on hook. Repeat this cross-stitch pattern from * all around robe, making 1 pattern at each corner and ending with a slipped st at start of first pattern. Now make a tr c thus: yarn

around hook twice, insert hook and draw loop under ch 3 of first cross-stitch of row below. Yarn over hook, draw loop through first 2 loops on hook, yarn over hook, draw through last 2 loops on hook. Ch 3, make picot at top of tr c; 1 tr c; 1 picot; 1 tr c; 1 picot; 1 tr c; 1 picot; 1 tr c (there is no picot at top of 5th tr c). 1 s c under next ch 3 of row below. You now have a fan of 5 tr c in the top of one cross-stitch and 1 s c in the top of the next. Repeat all around robe. Darn in all ends.

A Gift for Baby

Gen DeVeny, KO, displays the carriage robe she's finishing up for her cousin's new baby.

Using variegated wool, she has knitted the delicate blanket in the three most common baby colors . . . pink, blue and white.



Interesting Job

Eleanor Designs Nameplates



Works with Tiny Type — It's Eleanor Parkhurst's job in the CW Styling Dept. to sketch the designs for etch plates and decals used on Kodak products. Above, she points to a board containing etch plate samples.

Designing nameplates for Kodak products is the job of talented and pleasant Eleanor Parkhurst of the CW Styling Dept. The instruction stickers or decals attached to cameras and equipment also can be credited to her.

Interesting work, which requires imagination, deftness of hand and exactness, Eleanor declares it suits her because she has had an artistic inclination since childhood. It was this natural ability that led her to taking an art course for one year at the Rochester Institute of Technology after high school.

She soon became one of the few Camera Works draftswomen, and took over her present work four years later, in December of last year. Preparatory to it, she attended six weeks of classes, a special course in drafting, at RIT.

Eleanor's art work for etch plates (usually nameplates) and decals is minute in detail. Her target is seldom larger than the card containing your Social Security

number. If you were to drop in on her today, however, you'd see on her desk a 4½ by 11-inch sketch. The etch plate from it will be affixed to the new Kodak Conjugate Gear Checker. Although the largest nameplate she has designed, the type sizes used are just as minuscule as on the others.

Because dealing with tiny type is her job, a sense of proportion and a steady hand are necessary. "It's sometimes a job to get all the printing in, and do it gracefully," she admits. The results of her efforts must hold much important data, such as the name of the product, name of the Company and its location, patent number and often short instructions. Eleanor decides upon the size of the plate, but it

Garden Gab



CHRYSANTHEMUMS

Chrysanthemums, which are making their first appearance at this time of year, should be watched for aphids that may attack them. Spray the plant with a nicotine solution according to the strength indicated on the bottle.

A mildew cure is the Bordeaux mixture. For red spider, use dusting sulfur. If you notice cone-shaped galls on the leaves, appearing on the upper side, they are the homes of adult midgets or very small orange flies. To prevent further weakening and destruction by the adult midget, apply a solution of 1 t. of nicotine sulfate and 1 oz. of liquid soap to a gal. of water. Spray nightly for 10 days.

During the long hot days of August, it is good to mulch around the base of the chrysanthemum plant with lawn clippings, straw or peat moss.

HYDRANGEAS

The remarkable hydrangea has the facility of changing color according to the acid or base condition of the soil.

If you want to keep hydrangeas blue, use a sandy soil, peat moss, leaf mold or any other acid-creating material.

Blue hydrangeas turn pink, because of a change from the acid to the alkaline. If blue is preferred, add iron filings to the dirt or water with a solution of alum at the rate of 1 t. to a gal. of water.

must conform proportionately to the size of the product.

Many of her designs never go outside of Kodak, for she is continually making them for sample products, which engineers complete in every detail to give them a finished look.

Another phase of her job is that of redesigning plates and decals that are outmoded in their design or need revision of information.

It's fascinating work, Eleanor claims, not only because it's the sort of thing she's cut out to do, but because it keeps her up to date on EK products of all the plants.

Snared

Paired

Heired

Engagements

KODAK PARK

Jane Gaetano, Eng., to Thomas Camilo. . . Ruth Burt, Eng., to Jerry Acquard. . . Shirley Hayward, Mfg. Exp'ts., to John W. Sexton. . . Shirley Buckley, Cine Proc., to Don Bigham.

CAMERA WORKS

Alice Yeager, Dept. 93, to John Bird.

HAWK-EYE

Teddy Neva, Dept. 23, to George Cole.

KODAK OFFICE

Marillyn Kieffer, Comptroller's Dept., to George Wise, CW.

Marriages

KODAK PARK

Shirley Pike, Box, to Raymond Keiner. . . Arline Kaufman, RF Veri. Spig. Dept., to John Lynch. . . Elmer Kebich, RF Veri. Spig. Dept., to James Donnelly. . . Mildred Wright to Robert Shaw, Printing Dept. . . Ruth Whitney to Ralph Kramer, Printing Dept. . . Helen Rowley, Cine Reel Dept., to John Moagher. . . Jill Attoma, Cine Reel Dept., to Alfred Prince.

CAMERA WORKS

Nora Croston, Dept. 98, to George Ehrhardt. . . Bridget Fico, Dept. 95, to Philip Micchia. . . Shirley DeFelice, Dept. 43, to Fay Thompson.

HAWK-EYE

Marjorie Printy, Dept. 38, to John Harmsman, Dept. 10. . . Helen Brennan, Dept. 61, to Harold O'Connell.

KODAK OFFICE

Betty Post, Roch. Br. Billing, to Howard Appell. . . Jean Neufeglise, Repair Office, to Bob Latt.

Births

KODAK PARK

Mr. and Mrs. George Wagar, daughter. . . Mr. and Mrs. Frank Ligocki, son. . . Mr. and Mrs. Lynn A. Bradt, daughter.

CAMERA WORKS

Mr. and Mrs. John Portanova, daughter. . . Mr. and Mrs. Fred Benway, daughter. . . Mr. and Mrs. Thad Burnette, son. . . Mr. and Mrs. Caesar DeLorenzo, son. . . Mr. and Mrs. Ed Kohler, son. . . Mr. and Mrs. Milt Windhauser, son. . . Mr. and Mrs. Henry Gefell, son.

KODAK OFFICE

Mr. and Mrs. Bill Losee, son.

The Market Place

KODAKERY ads are accepted on a first-come, first-served basis. Department correspondents in each Kodak Division are supplied with ad blanks which, when your ad is typed or printed on them in 25 words or less, are put in the Company mail addressed to "KODAKERY," or handed in to your plant editor. All ads should be received by KODAKERY before 10 a.m., Tuesday, of the week preceding issue. HOME PHONE NUMBERS OR ADDRESSES MUST BE USED IN ADS. KODAKERY reserves the right to refuse ads and limit the number of words used. Suggested types are: FOR SALE, FOR RENT, WANTED, WANTED TO RENT, LOST AND FOUND, SWAPS. KODAKERY READERS ARE ASKED TO PLACE ADS ONLY FOR THEMSELVES AND HOUSEHOLD—NOT FOR FRIENDS OR RELATIVES. TO DO THIS IS TO DENY SPACE TO THE PEOPLE OF KODAK FOR WHOM THIS SPACE IS RESERVED.

AUTOMOBILES FOR SALE

Buick, 1939 Special, recent overhaul. 57 Commonwealth Rd.
Buick, 1941 sedan 4 door, radio, heater, good tires, \$995. Cul. 0132-J.
Chevrolet, 1933, coach, \$125. Char. 1706-R.
Chevrolet, 1935, \$100. 1238 Bay Shore Blvd.
Chevrolet Truck, 1941, sedan panel, \$850. 57 Selina Dr. after 6 p.m.
Dodge, 1935, 4-door sedan. Also Hawaiian electric guitar with speaker. Main 5497.
Dodge, 1941, half-ton truck. 24 Catherine St.
Ford, 1931 2-door. 250 Latona Rd., Glen. 4288-R.
Ford, 1935, with 1940 V-8 engine. Gen. 2892-J.
Ford, 1936, tudor, \$300. Hill. 1381-R.
Ford, 1937, coach, all accessories. Char. 2194-M.
Ford, 1937, tudor, new tires. 80 Kenilworth Terr., Apt. 3.
Ford, 1941 de luxe. First \$775 gets car—no dealers. C. Haskell, 766 Ridge Rd., Webster 268-F-12.
Oldsmobile, 1937, coupe. 19 Marks St.
Plymouth, 1935, sedan, \$235. 131 Orange St.
Reo, 1931 Royal sedan. Cul. 6171-M after 7 p.m.

FOR SALE

ARCHERY SET—25-lb.-pull bow, footed arrows, leather quiver, arm guard, finger tab. Also large size tennis net. 132 Clearview Rd.
BABY EQUIPMENT—Taylor-Tot, Teeterbabe, rocking horse, tricycle, \$10 for lot. Glen. 3733.
BABY FURNITURE—Matched bedroom, blond birch, complete. 60 Woodman Pk., Cul. 4248-J.
BABY SITTING—By day or week. Glen. 5154-R.
BABY SITTER—51 Cabot Rd. off Ridge Rd. W. St. 1686.
BASSINET—Folding standard, \$5. Also folding door-gate, \$1. Glen. 4391-W.
BATHINETTE—Also bassinet; car bed for baby, can be converted into seat. Glen. 4212-M.
BED—Complete, junior size, \$25. Main 6495-J.
BED—Double, solid mahogany, complete, half price. Hill. 2110-W.
BED—3/4 size, complete. Also twin beds; Victor console with records. Gen. 2636-R.
BEDROOM SUITE—Modern, complete, 5-pc. Also washing machine; stove; cooler; kitchen set; 6 chairs. Main 5853.
BEDSPREAD—Orchid, \$8. Also two knobby tread tires, 6.00x16 recaps, \$3 each. Glen. 3733.
BICYCLE—Boy's 26", St. 1465-R.
BICYCLE—Boy's 26", 125 Louise St.
BICYCLE—Columbia, 24", \$15. Also Spalding cowhide punching bag, standard size, with stand, \$20. 181 Glen Elynn Way, Mon. 6157-M.
BICYCLE—Girl's, \$30. Glen. 2376-J.
BICYCLE—Girl's 28", chrome finish, balloon tires. Glen. 0749-J.
BICYCLES—Two, boy's 26", girl's 26", 21 Taylor St. after 5 p.m.
BINOCULARS—Man's, German make, Hensoldt Wetzlar, power 10x50, length 10 inches, with carrying case, \$75 cash. 157 Atkinson St.
BIRD CAGES—One with standard, one without. Cul. 5716-W.
BOAT—Chris-Craft, 19 ft., 95 h.p. Can be seen Saturday or Sunday at Harrison Marine Corp., Bay View, or weekdays. Glen. 0561-W.
BOAT—14 ft. Thompson with deck and fittings. 117 Grafton St. after 5:30 p.m.
BOATS—Century outboard and inboard. Also new Mercury motor, will demonstrate. M. Calitree, Harrison Marine Service, Bay View Rd.
BOX TRAILER—Strong frame, \$60. 614 W. Ridge Rd., Webster 18-F-6 after 6 p.m.
BOX TRAILER—Tires 6.00x16. Or will swap for small boat. 1048 N. Clinton Ave., upper rear.
BREAKFAST SET—Black - white chrome. 1420 Emerson St., Glen. 1653-M.
BRIDGE TABLES AND CHAIRS—Hardwood, blond or mahogany finish, leatherette table top and chair seats. 71 E. Ridge Rd., Glen. 1631-R.
BUSHES—Barberry, large, free if you dig them. C. W. Carroll, 1862 Spencerport Rd.
CABIN CRUISER—43 ft., needs some work on bow, \$400. Miller's Boat Works, or Char. 1136-R.
CAMERA—Bush Pressman, 2 1/4x3 1/4, with accessories. Also Voigtlander camera, 2 1/4x3 1/4, f/6.3 lens, flash attachment. Gen. 2768-W.
CAMERA—Cine-Kodak Eight, Model 20, f/3.5, with case. Cul. 6232-W.
CARRIAGE—Mon. 0605-J.

FOR SALE

CAMERA—Graflex, 3 1/4x4 1/4, f/4.5 Anastigmat Lens, revolving back, complete set of adapter backs, other accessories. Also Thayer bathinette; model airplane engine. Jim Brobeck, Main 4800, Ext. 3204.
CAMERA—Mercury II, filter, holder, homemade case, \$60. LeRoy Foster, 122 Southland Dr., Henrietta, N.Y.
CAMERA—Rolleicord 1A, twin lens, reflex, Zeiss f/4.5, Compur shutter, speeds to 1/300, with carrying case, Kodachrome adapter, Kalart Master synchronizer and flash gun, \$100. Mon. 5236-W.
CAR RADIO—Custom built, for Plymouth, Dodge, Chrysler or DeSoto. Glen. 3725-J.
CHAIR—Wing, green upholstered, \$35. Also lamp and shade, \$5. 53 Scottsville Road.
COAT—Lady's shortie, red, size 16. Also shoes, brown kid, 7B. Main 6688-M.
COAT—Shorty tailor-made, aqua wool, gray lining, \$20, size 14. 51 Cabot Rd.
COCKER SPANIEL PUPPIES—Thoroughbred \$15. 50 Rochelle St.
CRIB—Large. Also carriage; playpen; high chair; Philco portable radio. Cul. 4097-J.
CRIB—Maple, child's. Gen. 0751-M.
CRIB—Maple, complete. Also matching chest of drawers. Glen. 2333-R after 11 a.m.
DARKROOM EQUIPMENT—Complete, includes Federal 347 enlarger, f/4.5 lens, easel, trays, safelight, tank, etc., \$60. 122 Southland Dr., Henrietta, N.Y.
DAVENPORT—\$25. Mon. 7734-W.
DAVENPORT TABLE—Also large medicine cabinet; breakfast set, maple, 5-piece. Gen. 7019-R.
DEEP FREEZER—Refrigeration Engineering make, 35 cu. ft. or 1600 lb. capacity, good for store or farm, \$375. Mon. 1339-R.
DESK—Walnut, 6-drawer, typewriter. Also small mimeograph with all equipment; swivel desk chair. Main 5163-R after 6 p.m.
DINING ROOM SUITE—Dark walnut, 8-piece. Mon. 2885-R after 6 p.m.
DINING ROOM SUITE—Eight pieces, no china cabinet, suitable for cottage. 1 Beechwood St., Cul. 6041-R.
DINING ROOM SUITE—Rush 67-M.
DINING ROOM TABLE—Duncan Phyfe, mahogany, 6 chairs, tapestry seats, open stock. 14 Mill St., Ontario.
ELECTRIC TRAIN—Also radiant heater; vacuum cleaner; double poster bed and spring; 12 ft. flag pole; tailored curtains; Cogswell chair; 3/4 bedspread; bird cage, standard; 2 throw rugs; 7 6x9 green rugs; floor lamps, clothing, after 5 p.m. Cul. 0757-R.
ENLARGER—Solar 4x5 Condenser, \$75. Mon. 2240-W.
FOOD MIXER—Dormeyer. St. 5800-X between 5-7 p.m.
FORMALS—Pink, size 9; orchid, size 11; yellow, size 15, with matching headpieces. Mon. 2273-M.
FORMAL—Blue velvet, size 14, \$20. Glen. 4688-J after 5 p.m.
FRENCH DOORS—Two, 6' 8", heavy gumwood, \$25 each. Also 2 room-size rugs, \$10 each; 2 iceboxes, \$3 each; several rockers; good cottage furniture. 2420 Ridge Rd. W.
FURNACE—21-inch. 483 Plank Rd., Webster.
FURNITURE—Maple table with 4 chairs, \$35; davenport and 2 chairs, suitable for cottage. Char. 2193-W after 5:30 p.m.
GAS RANGE—Norge. Also 5-piece black-and-white kitchen set; Speed Queen washer; coffee table; baby furniture and clothing. 630 Eaton Rd., 3125-M.
GOLF CLUBS—Lady's, 2 woods, 4 irons, bag. Char. 2682-M.
GOLF CLUBS—Lady's, Craig woods, personal model, matched set, 2 woods, 7 irons, putter, 133 Parkside Ave., Cul. 3254-W after 6 p.m.
HAMMOCK—Jungle with nylon netting and cords, rainproof, \$4.95. KP ext. 7264.
HEARING AID—Bausch & Lomb Acousticon, \$25. Glen. 0399-M.
HORSE—Sorrel mare, sound, well-mannered, can be ridden or driven. Also Western saddle, bridle and breast collar. Cul. 0721-J after 5:45 p.m.
HOT WATER HEATER—Bucket-A-Day, \$5. 283 Wisconsin St., Cul. 3341-W.
HOUSE TRAILER—Sleeps 4, bottled gas, real bargain. Also boat and inboard Briggs & Stratton motor, new last year. Mon. 4212-M.
HOT WATER HEATER—Automatic, 30 gal., \$60. Also Simmons studio couch, makes double bed, \$50. 2210 Baird Rd., East Rochester 487-F-5.
INBOARD MOTOR—Marine, 6 cyl., 150 h.p., complete starter and generator. Cul. 0327-R.
IRONER—Kenmore Deluxe. Glen. 3163-W.
IRONER—Easy, \$95. William Lindsay, 51 Fair St., Nunda, N.Y., Nunda 206-2.

FOR SALE

KELVINATOR—Eight cu. ft., \$150. Also clothes reel, \$7. Gen. 4555-R.
KITCHEN SET—Porcelain-top table, 4 chairs. Also floor model G-E radio. Glen. 1295-W after 6 p.m.
LADDER—40-ft. extension. Also folding carriage with pad; high chair. Cul. 3635-W.
LIVING ROOM SUITE—Wine frieze, 2-pc., custom made, drycleaned slip covers included. 49 Frost Ave.
LOT—Oakridge Dr., residential district in Irondequoit, over 1 1/2 acres of shady land; quiet, private, convenient. Cul. 6171-M.
MACHINERY—For complete home work shop: lathe, drill press, buffer, motors, etc., fluorescent fixtures, billing machine, electrical testing equipment, sold in lot or separately. 123 W. Elm St., E. Rochester, phone 9-J, 7-9 p.m. or Sat. p.m.
MANGLE—238 Avis St.
MATERIAL—For suit, 5 1/2 yds. Glen Plaid, brown tone, worsted wool. Or swap for 8" table saw. Gen. 1240-J.
MOTOR—1/3 h.p., with attached 6' flexible cable and buffing wheel. 148 Boxart St., Char. 0755-R.
MOTOR—Whizzer, on Schwinn bike. Char. 1690 between 7-9 p.m.
MOTOR BIKE—Whizzer, fair condition, motor just overhauled. Cul. 2261.
MOVIE CAMERA—Revere Model 99, f/1.9 lens. Also Revere projector, \$200 complete. Mon. 2691-J after 7 p.m.
OFFICE WORK—Correspondence, typing, bookkeeping, billing, done at home for business men requiring occasional assistance. Glen. 5138.
OIL STOVE—Five-burner. Also white cooler. R. M. Luckenbach, Henrietta.
OUTBOARD MOTOR—Champion, 4.2 h.p., 1947 with safety gas can, \$70. Also screen moulding, picket fence, Adirondack chairs. Glen. 0329-J.
OUTBOARD MOTOR—1 1/2 h.p., \$35. Glen. 1869-J, between 5-6 p.m.
OUTBOARD MOTOR—6 h.p. Glen. 4973-W after 6 p.m.
OUTBOARD MOTOR—Neptune, 6 h.p. Mon. 4898-W.
OUTBOARD MOTOR—Neptune, 5 h.p., alternate firing. Also GE 1/4 h.p. one-phase motor. 49 Fillingham Dr., off 2227 Dewey Ave.
OUTBOARD MOTOR—Neptune, 6 h.p., \$50. Glen. 1460-W.
PUPPIES—Cocker Spaniel, thoroughbred, 98 Roth St.
PUPPIES—AKC registered, pedigree collies, male and female, \$35, all 6 for \$200. W. A. Reedy, Spencerport 137-J.
PUPPIES—Mexican Chihuahua, 8 wks. old. 49 Mapleale St., Cul. 2214-W.
RADIO—Zenith, with attached recorder. St. 5324-L.
REFRIGERATOR—Electric, 5 cu. ft., \$30. 211 Rand St.
REFRIGERATOR—Westinghouse, 1946, 7 cu. ft., 26-month guarantee. 80 Culver Rd.
REFRIGERATOR—Hotpoint, 6 cu. ft. St. 5324-L.
REFRIGERATOR—Philco, double door, 7 cu. ft. Also Truetone cabinet radio; mahogany rocker; brown print rugs, 9x12 and 6x9; stairway runner; red bird cage; day bed. Glen. 6699-R.
RIDING BOOTS—Man's, 9 1/2 D, Colt English style. Glen. 6978-R.
RUBBER BOAT—One-man, complete with collapsible mast and sail, \$20. 3 Goodger Pk. off Alpha St.
RUG—Porch. Also 8-ft. wide drop curtain; porch chair. Mon. 6785-R after 5 p.m.
SAILBOAT—Thompson Seagull, fully equipped. Hampshire Marine Service, Char. 1264.
SCREEN DOOR—3 1/2"x6'8", window screens, miscellaneous sizes. Glen. 5303-J.
SHOES—Lady's five pairs, brown, wine, black oxfords, blue, size 5B, 1 pr. 7 1/2 medium, all from Genesee Bootery. 407 Flint St.
SILVER—Sterling, 11-piece setting. Gen. 1892-R.
STOVE—Sterling combination gas-oil, including oil burners, oil pump and drum, \$35 for quick sale. St. 3830-X.
STOVE—St. 2683-L.
STOVE—Tappan, white table top, 4 burners, oven control, side compartments. Glen. 5675-M.
STUDIO COUCH—With chair. 33 Kislisbury St., Glen. 4265-W between 5-7 p.m.
SUITS—Three wool, size 15, gray check, black gabardine with brilliant buttons, brown pin stripe. Glen. 3030-J.
TABLE—With 4 chairs, blond oak. 542 Empire Blvd.
TENT—5x7 frame top, side walls, \$13.50. Cul. 6970-R after 5 p.m.
TIRES—Two, 6.5x18, with tubes, \$45. Cul. 4997-R after 5 p.m.
TRAILER—1947 Prairie Schooner, sleeps 4, 3861 Mt. Read Blvd., Char. 0980-J.
WASHING MACHINE—Bendix, home laundry, \$75. Also camera, 3 1/4x4 1/4 press, complete, \$100. Gen. 3882-W.
WASHING MACHINE—Quarter h.p. motor, 60-cyc., \$18. 873 Arnett Blvd.
WASHING MACHINE—Easy. 707 Norton St.
WASHING MACHINE—Wringer type, \$25. Char. 1046-R.
WATER HEATER—Side arm. 30-gal. tank, 3 yrs. old, \$7. 140 Howland Ave., Mon. 0950-M.
WATER HEATER—Side arm. Also washing machine; pressure cooker, capacity 7 qts.; maroon sisal rug, 6'x12". Cul. 5320-R.
WATER HEATER—Bucket-A-Day, automatic controls, copper tubing connections, \$10. Gen. 3168-W.
WATER HEATER—Bucket-A-Day, International. Cul. 5591 after 6 p.m.

FOR SALE

WHEEL CHAIR—Chrome pipe, folding, corduroy seat and back, \$85. 74 Berlin St., or St. 2743-X.
WINDOW FRAME—Sash and storm windows for opening 60"x60", \$8. 39 Hampton Blvd., Char. 1395-W.
HOUSES FOR SALE
COTTAGE—At Honeoye Lake, 2 floors, all city improvements, including extra lots, furniture, dock, boat, etc. Mon. 8083-M.
WANTED
AUTOMOBILE—Chevrolet, 1931 coupe. Joe Soppe, Main 7810.
BED—Single, with coil springs. Glen. 3867-W evenings.
BINOCULARS—Second hand. Glen. 0098-J.
BOY—To board, between 6 and 11 years old. 103 Kimbark Rd. Hill. 1101-M.
DOLL BUGGY—Glen. 6368-R.
ELECTRIC RECORD PLAYER—Call Gen. 0392-J.
ELECTRIC TRAIN—Small, for sick boy in Europe. Must be reasonable. Cul. 4225-M.
EVENING WORK—Kitchens and bath-rooms specialty, painted or washed, estimates at your convenience. Gen. 0673 after 5 p.m.
EXPOSURE METER—Char. 1832.
GARAGE—Vicinity Driving Park Ave. and Pierpont St. Glen. 4396 after 5:30 p.m.
GOWN—Bridemaids, size 12, pink marquisette with hoop skirt, matching hat and gloves. Main 6421-R, 21 Fien St., evenings.
HOME—And understanding care for 8 yr.-old deaf girl until school time, Genesee St. district preferred, references. Gen. 6302-M.
LUGGAGE CARRIER—Auto top, basket type, preferably with tarpaulin. Char. 2846-M.
MAN—With own tools, to plow land in vicinity of W. Ridge Rd., near Dewey. Glen. 1593.
MOTOR—Marine, 4 cyl. Cul. 0327-R.
PAPER BALER—Glen. 0209.
PROJECTOR—16mm. Glen. 5609-W.
RIDE—Culver and Winton Rd. section to and from KP, hours 8 to 5. Cul. 5871-W.
RIDE—From Avon or E. Avon to KP, hours 8-5, Monday thru Friday. Avon 5870.
RIDE—From E. Rochester to KP and return, Mon. thru Fri., hours 8-5. E. Rochester 453-J, 119 W. Hickory St.
RIDE—From Parma-Hamlin Town Line Rd., near Walker Rd., Hilton, to KO and return, hours 8-5. Hilton 119-F-3.
RIDE—From Springwater to Kodak Park, trickwork. Springwater 528.
RIDE—From 766 W. Ridge Rd., Webster, to KP, hours 8-5. C. Haskell, Webster 268-F-12.
RIDE—Monday thru Friday, hours 8-5, to and from Hilton. Hilton 129-F-3.
RIDE—Monday thru Friday from East Rochester to KP, East Rochester 517-W.
RIDE—To and from Thurston Rd. to KP, hours 8-5. Gen. 0756-R.
RIDE—To Inlet, N.Y., with couple or 2 other girls, over Labor Day weekend. Hill. 2354.
RIDERS—25 miles out East Lake Rd. Earl Reafel, Pultneyville area. Williamson 6922.
STEAMER TRUNK—Large. Spencerport 3-4335 after 6 p.m., or write 4222 Buffalo Rd., Rochester 11, N.Y.
TENT—Approx. 7'x9'. Also folding cot. Richard Peterson. Glen. 0179-R.
TENT—Sleep two to four. KO ext. 4105, Phyllis Holt.
TOBOGGAN—Large, for utility use. Glen. 1504-W.
TRUNK—Wardrobe or steamer preferred. KO ext. 4203.
TYPEWRITER TABLE—Gen. 4555-R.
APARTMENTS WANTED TO RENT
By mother and working daughter. High St., Fairport 248-W.
By Sept. 1, 3-4 unfurnished rooms, by working couple, references if necessary. Cul. 7291-R after 5:30 p.m.
Business girl desires apartment with private bath, references. Cul. 2228-J after 6 p.m.
For employed couple, by Sept. 1, 3-4 rooms. St. 7158-L.
Furnished or unfurnished by Sept. for young employed couple. Mon. 9372 after 5:30 p.m.
Or flat, 5 rooms, unfurnished. Also garage. Cul. 3786-J.
Or flat, unfurnished 4 rooms, with porch, near St. Paul-South Ave. bus, by business woman. Mrs. A. L. Border, Glen. 3586-W.
Or flat, 4 rooms, by couple expecting baby. St. 5037-R.
Or house, reasonable rent, in or out of city, for couple and child, references if desired. Gen. 4384.
Or house, 4-5 rooms desperately needed by young working couple and year-old child. 447 N. Clinton Ave.
Young couple with sister, all veterans, desire 3-5 rooms, unfurnished, suitable location. Miss Claire Schilling, YMCA Cafeteria, St. 2942, after 10:30 weekdays.
Two-3 rooms furnished, near KP, working couple. KP KODAKERY.
Two-3 rooms, furnished by business couple. Glen. 0093-R after 6 p.m.
Three rooms, unfurnished, by Sept. 1, heat and light. Gen. 6293-J.
Three rooms and bath, city or suburban, by Sept. 1, employed couple. Pittsford 74-J, collect.
Three rooms, private bath, by young employed couple, references. Char. 0955-W.

APARTMENTS WANTED TO RENT

Small apartment, 2 or 3 rooms, by man, cooking facilities preferred, furnished or unfurnished. Mon. 3129.
Three-4 rooms, unfurnished, by mother-daughter, both Kodak members, references furnished. R. MacRae, Glen. 6153-J.
Three rooms, furnished or not, by Sept. 1 or Oct. 1. Mon. 3862-W.
Three-4 rooms, by Kodak research chemist, wife and child. Cul. 3082-R, or Tuddenham, KP 2632.
Three rooms, unfurnished, by KP couple by Sept. 1, good references. Char. 0093-J.
Three-5 rooms or flat, unfurnished, GI and wife, both employed, will pay up to \$50. For reference, Mon. 6255-J.
Three-4 rooms by Aug. 1, preferably near KP, urgently needed by working couple. Glen. 5217-J.
Three-4 rooms unfurnished, willing to redecorate, young couple to be married soon. Donald Baker, Cul. 0843-R.
Three-4 rooms unfurnished, for employed couple. Call KP KODAKERY.
Three rooms, unfurnished, and garage, on or before Sept. 1, prefer West Side, references, by Kodak nurse. Gen. 6851-J evenings.
Four-5 rooms, unfurnished, 2 adults. KP Ext. 7271.
Four or more rooms, unfurnished, by young employed couple, willing to redecorate, around \$45 per month, Mrs. Virginia Millsap, Main 2791, ext. 123.
Small unfurnished apartment near Kodak, \$35-\$40 per month, by widow and daughter. N. Herrick, KP 8142 after 5 p.m.
Unfurnished or furnished, by KP chemist, one child, references furnished. Mrs. Borden at Glen. 2473.
Veteran, wife and child would like 4-5 rooms, can pay \$40-48 per month. Glen. 2850-W.
FOR RENT
APARTMENT—Two-room unfurnished, share kitchen and bath, for woman. Mon. 3531-M.
BOX TRAILER—With tarpaulin cover, weekly, during Aug. and Sept. St. 6811-J.
COTTAGE—East side Conesus Lake, city conveniences, available first and last weeks of Aug., month of Sept. Genesee 345-M.
HOME—Will share my home with young couple with privilege of using their own bedroom furniture if desired. Call St. 2023-R after 6 p.m. or weekends.
HOME—Will share my completely up-to-date home with couple, lady to care for home, no rent to pay; or middle-aged woman, more for home than wages. Arthur Scorse, 1934 English Rd., Glen. 6104-J.
OUTBOARD MOTOR—\$10 weekly, for vacations. 42 Conrad Drive., Char. 1029-M.
ROOM AND BOARD—Girl preferred, \$15. 6 1/2 Orleans St.
ROOM—Comfortable and pleasant, Cobbs Hill section, gentleman preferred. Mon. 4649-R.
ROOM—Furnished, private home. 683 Jefferson Ave.
ROOM—Furnished, South Pk. section, attractive, private home, on bus line. Gen. 7097-M.
ROOM—Large double, new furniture and bedding, cross ventilation, near KP. Glen. 6978-R.
ROOM—Neat clean room for single person, convenient to bus lines. Inquire at 224 Otis St.
ROOM—Pleasant, furnished, with private family, suitable for 1 or 2 employed people, use of phone, close to bus, breakfast arrangement possible. Glen. 4027-M.
ROOM—Use of phone and laundry. Char. 0583-M, after 6 p.m.
ROOM—With double bed, semi-private accommodations for gentleman in quiet section, walking distance KP. Mrs. Cutcliffe, 173 Bryan St., Glen. 1612.
ROOM—With private bath and shower, centrally located, suitable for 1-2 girls. Main 0892.
ROOM—Sleeping, for 2 gentlemen, near KP, twin beds. Glen. 3725-J.
ROOMS—Two furnished, 70 Mohawk St.
ROOMS—Sleeping, in private home, near bus line, 10 min. from Kodak Park, gentlemen, references. 161 Willis Ave., after 7 p.m.
ROOMS—Two, girls preferred, \$10 each. Mrs. Sansone, 42 Villa St.
ROOMS—Two furnished, share kitchen, young employed couple. 39 Winchester.
ROOMS—Two pleasant sleeping rooms within walking distance of KP, young men preferred. 24 Carlisle St. or Glen. 5507-J.
WANTED TO RENT
HOUSE—Out of city 10-14 miles. R. M. Luckenbach, Henrietta, N.Y.
HOUSE—Two bedrooms, Boston or semi, 19th Ward preferred. 3 adults. Main 1191-M, CW KODAKERY 6256-334.
ROOM—Unfurnished, in KP vicinity, by young woman. Glen. 6613-R, between 6-9 p.m.
SWAPS
FORD—1941 de luxe 2-door. For: cabin trailer with good chassis. C. Haskell, 766 W. Ridge Rd., Webster 268-F-12.
PUPPY—Beagle. For: pointer puppy. 843 Seward St.
LOST AND FOUND
LOST—Money, in folded bills, near West Hanford gate, Tuesday-Thursday. Call KP 8117.
LOST—Zircon coat pin, in or around NOD. Return to NOD Safety Dept.
LOST—Brown billfold, valuable papers. Reward. CW KODAKERY 6256-334.

Sports Roundup

Indian Scout...Schmidt Added... Hanna Wins... KO Golfers Set

ED DUNK, KP, has been appointed Rochester area and Monroe County baseball scout for the Cleveland Indians, it was reported recently. . . . Ed Thaney was among the low scorers in the 13th annual Brook-Lea

trundled up to Buffalo to look on at the State Amateur golf event. . . . Third KORC men's golf meet of the season has been scheduled for Aug. 21 at LeRoy. The year's finale is billed for sometime in September, possibly at Brook-Lea.



Schmidt

Dusty Tennis Standings

| | W | L | Pct. |
|----------------|----|----|------|
| Kodak Park | 41 | 3 | .82 |
| Balcos | 31 | 8 | .62 |
| Kodak Office | 27 | 17 | .54 |
| Hawk-Eye | 22 | 16 | .44 |
| Roch. Products | 14 | 29 | .28 |
| Camera Works | 13 | 27 | .26 |
| Strombergs | 12 | 28 | .24 |
| Wollensaks | 6 | 38 | .12 |

Results last week: July 26—Balcos 4, Roch. Products 2; July 27—Hawk-Eye 4, Wollensaks 1; July 28—Kodak Park 6, Camera Works 0; July 29—Kodak Office 4, Strombergs 1.

Hole-in-1 Won By KO Golfer

For the second consecutive year, Lois Patchen, Kodak Office golfer, won the women's title in the Times-Union hole-in-one contest. . . . Lois put all five of her shots on the target green for a score of 10. Her first three shots were within the 40-foot ring for two points apiece, her fourth was in the 60-foot circle for a one and the last shot was in the 20-foot marker for a three.

Dept. 42 Blanks Production, 1-0

Dept. 42, titleholders in 1946 and runners-up last year, clinched a play-off berth in the H-E Intramural League last week, when they edged out Production in a 1-0 thriller. They join the Memos, Estimators, and Production in the play-offs this week.

The lensmen combined a walk to Joe Murphy and hits by Nelson Gutzmer and Don Kausch to produce their winning marker in the first inning. Line score: Dept. 42 100 000 0-1 5 0
Production 000 000 0-0 1 0
Bischoff and Palleschi; Schneider and Neidenbach.

| LEAGUE STANDINGS | | | | | |
|------------------|---|---|---------------|---|---|
| Memos | 8 | 0 | Dept. 29 | 4 | 4 |
| Estimators | 7 | 1 | Apprentices | 4 | 5 |
| Dept. 42 | 6 | 1 | Recordak Asm. | 2 | 5 |
| Production | 6 | 3 | Recordak Eng. | 2 | 5 |

Park Captures Major League Championship

Kodak Park clinched the Major Industrial Softball League title Monday night by nosing out Graflex, 3 to 2, while second-place Ritters bowed twice in a twin bill.

The Kaypees rallied in the last of the seventh to score their victory, with Bud Oister cracking out a double to send Bill Doyle and Ralph Taccone across the plate.

Loosing a 16-hit barrage, the Kaypees blanked Gleasons, 9-0, behind the two-knock twirling of Ken Busch. Al Smith connected for three blows in as many trips to lead the batting attack.

Limited to a single hit, Camera Works bowed to the Balcos, 2-0. Ed Mayer, who was nicked for the two runs in the opening frame, turned in a good game, allowing but three bingles.

STANDINGS

| | W | L | Pct. |
|------------|----|---|------|
| Kodak Park | 15 | 2 | .82 |
| Ritters | 11 | 5 | .62 |
| Delco | 11 | 6 | .54 |
| Wollensak | 11 | 7 | .51 |
| Balco | 10 | 8 | .50 |

Accounting Gets 1st Place in Golf

The Accounting linksmen captured first place at the end of the regular season's play in the H-E Twilight Golf League, splitting their 18-point match with the Paint Shop.

Play-offs for the championship got under way last Tuesday at Lake Shore with a round-robin elimination series.

Five golfers hit the blind bogey right on the nose in last week's matches with handicap scores of 78. They are George Meyers, Dave Charles, Jim McEneaney, Bob Johnson and Walt Dubiel. Other blind bogey award winners were Hank and Earl Bauman and Harvey Brown.

Final League Standings

| | W | L | Pct. |
|------------|-----|----------------|------|
| Accounting | 80½ | Question Marks | 54½ |
| Mongrels | 69½ | Estimators | 49½ |
| Paint Shop | 66½ | Supervisors | 42½ |
| Dept. 42 | 61 | Production | 36½ |
| Personnel | 60½ | Recordak | 34 |

Trickworker Gets Sub-Par 69 To Win Kaypee Golf Tourney

Frank Weis fashioned a sizzling three-under-par 69 to cop top honors in Class A of the KPAA Trickworkers' Golf Tournament held at Ridgemont July 27. Weis finished with a low net score of 66, carding 4 birdies en route and missing an eagle on the 485-yard 18th hole.

In the Class B firing, Irv McCone shot an 84 aggregate which, with his 20-stroke handicap, netted him a 64 for first place just ahead of Hugh Dodge who posted 83-18-65.

Al Burnett finished 8 strokes in front of his nearest rival in the Class C event by carding 92-29-63.

Winners:
Class A—Frank Weis, 69-3-66; Lindsay Johnston, 73-5-68; Adrian Twist, 75-7-68; Eugene Messenger, 77-8-69; Dick Habes, 74-3-71; Leo Lynd, 81-10-71; Frank Arioli, 84-13-71; John O'Connell, 83-12-71.

Class B—Irv McCone, 84-20-64; Hugh Dodge, 83-18-65; Frank Miles, 92-22-70; Phil Burnham, 95-24-71; Jack Kennedy, 87-16-71; Ray O'Boine, 91-19-72; John Dickson, 97-24-73; Martin Conheady, 96-23-73.

Class C—Al Burnett, 92-29-63; Don Volkmar, 102-31-71; Fred Grossman, 104-32-72; Joe Finucane, 101-28-73; Don Kykendall, 105-32-73.



Sacrifice — This bunt by Joe Kinsella figured in the scoring Wednesday noon in the Lake Ave. Noon-Hour League at Kodak Park. The play advanced Don Stollery to second and Don trotted across with the game's only tally when Tom Castle, with the bat in background, tripled. Jack Finucane is the Dodger catcher and the umpire is Gary Willis.

Pace-Setters Hard-Pressed In KPAA Noon-Hour Leagues

Leaders continue to be pressed in Kodak Park's three noon-hour softball leagues.

Jim Moyer's Renegades retained their lead in the KPAA West Kodak wheel by blanking Synthetic Chemistry, 4-0, as Joe Franz hurled a no-hitter. Dave Putnam's and Frank Fox' hitting featured. Wood Cellulose jumped from the cellar to second place by defeating the Renegades, 3-1, and upsetting F.D. 5, 4-3. In a heavy-hitting contest, Syn. Chemistry walloped Wood Cellulose, 13-1, with Eddie Abel and Bill Stumphauer posting two homers apiece.

The Giants and Yankees remained tied in the KPAA Lake Avenue race. Jim Gallagher's Giants downed the Dodgers, 5-1, and the Yankees edged Mike Farrell's outfit, 1-0. The Dodgers retaliated by shutting out the Birds, 6-0, Sid Dilworth and Al Smith starring. In a pitching duel, Howie Niedermaier and Shifty Gears battled to a scoreless tie between the Giants and the Yankees.

Roger Hall's Royals hung on to their loop lead in the KPAA Ridge

KPAA Horseshoe Loop

| | W | L | Pct. |
|---------------|----|----|------|
| 16mm. | 91 | 59 | .605 |
| Electric Shop | 89 | 61 | .590 |
| Metal Shop | 84 | 66 | .560 |
| Maintenance | 69 | 49 | .460 |
| Bldg. 203 | 64 | 86 | .427 |
| Syn. Chem. | 36 | 64 | .360 |
| C-K Proc. | 23 | 52 | .306 |

KO Clinches First Place

Scoring its sixth win in a row, the Kodak Office Dusty team clinched first place in the Eastern Division of the Champion Industrial League last week by trimming Ritters, 8-1.

Paul Mastrella kept the losers' five hits well scattered and received excellent support from his teammates who turned in one double play and several other fielding gems.

Carl Ziobrowski and Jack Lynch led the KO 11-hit attack, Lynch getting three for three. Carl garnered a tremendous homer among his three hits. Bob Wallace added two solid blows.

The Office nine fell on the Ritter pitchers early to pile up a six-run margin in the first two frames.

Score by innings: 000 010 0-1 5 2
Ritters 240 200 x-8 11 1
Barone, Boehler, Clifford and Ranelletta; Mastrella and Ziobrowski.

Bldg. 65 Takes Top In KPAA League

Bldg. 65 rang up its third straight win in the KPAA Girls' Softball League last week to take over first place, defeating Medical, 10-9. Bernice Fenlon, Irene Lochner, Martha Westgate and Judy Ciccone turned in fielding gems. Vivian Granger, Medical, banged out a triple in the fourth inning.

In another scheduled contest, Reel Manufacturing downed Color Control, 15-10, as Doris Shaw, hurler for the Reels, struck out six batters. Standings:

| | W | L | Pct. |
|---------------|---|---|-------|
| Bldg. 65 | 4 | 0 | 1.000 |
| Reel Mfg. | 4 | 1 | .800 |
| Color Control | 1 | 3 | .250 |
| Medical | 0 | 5 | .000 |



Tee Talk — Irving McCone, left, and Frank Arioli, of the Dope Dept., discuss things before teeing off in the KPAA Trickworkers' tourney last week at Ridgemont. McCone topped Class B and Arioli was in a tie for fourth in Class A.

E&M Ridgemont Golf

(Standings as of July 28)

| | Points |
|-------------------------------|--------|
| Perc Stevens-Jim Jenkinson | 32½ |
| Louis Gerhardt-Oscar Zabel | 28 |
| Jack Walsh-Effie Slater | 26½ |
| Jim Culhane-George Lawrence | 26 |
| Dave Harris-John Hickey | 26 |
| George Hayes-Harold Mosher | 23½ |
| Leo Closser-Al Kaiser | 22 |
| George Patterson-Bill Hallett | 21½ |
| Jim Scott-Louis Moss | 21 |
| Harry Horn-Clayton Benson | 20½ |
| Jim Weigand-Henry Brown | 19½ |
| Fred Kunkel-Cecil Aronson | 19½ |
| Bob DeBerger-Louis McManus | 19 |
| Lewis Behrnt-Harold Gunderson | 17½ |

SEC. 562 P. L. & R.

U. S. Postage

PAID

Permit 6

Rochester, N. Y.

KODAKERY

EASTMAN KODAK COMPANY

Rochester 4, N. Y.

Return Postage Guaranteed