

A NEWSPAPER FOR THE MEN AND WOMEN OF EASTMAN KODAK COMPANY

Vol. 8, No. 3

Copyright 1950 by Eastman Kodak Company, Rochester, N. Y.

January 19, 1950

Dutch Diplomat Dined Here



Ambassador Visits Kodak—Eelco N. Van Kleffens, left, Netherlands ambassador to the U. S., and T. F. Robertson, director of EK Public Information, enter KO on their way to a luncheon in the ambassador's honor. Van Kleffens spent the afternoon touring KP. His visit to Rochester was to express his nation's gratitude to Alan Valentine, U. of R. president, who served as chief of the Marshall Plan mission to The Netherlands. Both were special guests at the annual Chamber of Commerce dinner.

Young Gets Top Kodak Salon Prize

News direct from Harrow, England, is that Art Young, H-E Superintendent's Office, won the George Eastman Gold Medal in the 15th Kodak International Salon of Photography.

His "Flower Study" was judged the best pictorial print of the show. Young also won a silver medal in the Pictorial Class with his boat scene, "Drifting Match."

The exhibition will be opened officially Tuesday evening, Jan. 24, at the Kodak Factory at Harrow. It will be on view at the Royal Photographic Society in London from Feb. 6 to 17 and then at the Kodak Gallery, London, Mar. 13-25.

Eighteen countries are represented in the salon open to members of the Kodak Organization throughout the world.

The entry list is a large one, with 740 monochrome and color prints, and 450 color transparencies. The judges have selected some 250 prints and 150 transparencies.

Others from Rochester

Several other Kodak Rochesterians are among the award winners.

Robert F. Edgerton, KP Paper Service, won the J. J. Rouse Memorial Trophy for his pictorial monochrome, "Reveille," the 4th place Silver Medal for "Secured," a certificate for his "Frozen Design." He won the Donald McMaster Award for the three best prints entered by one contributor. His "Lady Pamela" was voted the A. Stuber Award.

Silver medals in the Pictorial Monochrome Class go to Larry Spaven, CW, and Joe Hale, KP; bronze medals, Peg Macaulay, KO, and C. W. Fairbanks, KP; certificates, John Fish, KP, and Don Nibelink, KO.

The W. T. Roach Award for the best hand-colored print has been won for the second year in a row by Germaine Anna Grum, KP. Information on the remaining awards in the Pictorial Color Print Class and about some other awards had not been received by KODAKERY by press time.

Rochesterians also did well in

Best Pictorial Print in Show



Excels in Salon—Art Young, right, of H-E Superintendent's Office, receives congratulations from J. Lawrence Hill Jr. after Young was informed from Harrow, England, that he won the George Eastman Gold Medal in the 15th Kodak International Salon of Photography. He's holding a copy of the winning print. Hill of Bldg. 23 at KP is North American chairman.

the Nature Monochrome Print Section, Fairbanks, KP, winning the E. S. Farrow Trophy. H. Lou Gibson, KO, has the silver medal in this class, and Fish, bronze medal. The Pictorial Color Transparency Class was divided into two sections.

In "Other Sizes," Germaine Anna Grum won the I. N. Hultman Award. Robert Kleinschmidt, KP, merited both the E. E. Blake Award and the silver medal. Two awards in "Miniatures" went to

(Continued on Page 4)

How About Exemptions?

Has the number of your income tax exemptions changed lately? Is there a new addition to the family? Is somebody you previously claimed as a dependent now earning \$500 or more a year? Has your marital status changed?

If any of these things or others have happened to change your exemptions in any way, you should fill out a new Form W-4 so that the correct amount of income tax may be withheld from your pay check in 1950. The Bureau of Internal Revenue, you know, makes it your responsibility to see that your exemption status is up to date.

A blank Form W-4 may be obtained from the department timekeepers at Kodak Park and Hawk-Eye; from the Industrial Relations Dept. at Camera Works and NOD, or from the Personnel Dept. at Kodak Office and DPI.

If there's any question in your mind about your exemptions, your

plant Industrial Relations Dept. will be glad to discuss it with you.

If there are no changes in your exemptions, just don't fill out a form.

You Need These!

Members of the Eastman Savings and Loan Association are urged to save their semiannual statements. Mailing of them will be completed this week.

The statements contain information which members will need to complete income tax returns, such as dividends credited, mortgage interest and real estate taxes paid.



Cross-Country Report's Optimistic—When Kodak's Branch Management Staff met in Rochester last week, managers brought optimistic news with them from all sections of the U.S. Christmas business had been good, they reported, and they are optimistic about 1950 sales. It was their annual meeting in Rochester to discuss accomplishments in 1949 and formulate plans for 1950. Shown at the first conference, from left, are Tom Connors, New York Branch manager; L. L. (Farnie) Farnsworth, Rochester Branch assistant manager; Jim Smith, Los Angeles manager; Don Kerr, San Francisco assistant manager; Eric Sitzenstatter, KO Sales Territorial Management Staff; Ted Pevear, assistant general sales manager; Jim McGhee, vice-president and general sales manager; John Schulz, Chicago manager; Joe Allendorf, San Francisco manager; Ross Robertson, Rochester manager, and Jim Bessellieu of KO's Sales Territorial Management Staff.

No Break in Kodak Service To Result from Layoffs

Layoffs due to slack work haven't ever caused a break in service for some Kodak Plans. In the case of Wage Dividends and Sickness Allowances, however, layoffs of more than six months have meant a break in service. People returning after such layoffs have had to requalify for these payments on the same basis as newly hired people.

From now on, this no longer will be the case. No layoff occurring after January 1, 1949—no matter how long the layoff may be—will result in a person having to start again as a new employee for these plans.

This means that when a laid-off person returns to work he will be given credit for his employment before the layoff and will qualify for Sickness Allowances on the basis of his earlier period of service plus his service since his return from layoff. Any Wage Dividends, payable after his return will be based on all earnings he has had during the five calendar years immediately prior to the payment date even though he may have had a layoff on account of slack work during this period.

Credit for Pensions

As far as pensions are concerned, the rule in respect to layoffs has always been the same as the new provision for Sickness Allowances and Wage Dividends, credit having been given for prior service.

In addition to this, a recent change in the pension rules now has eliminated all breaks in service in figuring the pensions of eligible people. This change provides that any person who returns to work after an interruption in service for any reason, including resignation, will receive pension credit for all service, both before and after the interruption, if he or she remains at Kodak until normal retirement age.

TEC Names Texas Staff

David C. Hull has been appointed manager of the Texas Division, the new plant of Tennessee Eastman Corporation at Longview, Tex., James C. White, president of TEC, announced.

Others named to the managing personnel are: H. H. Imray Jr., assistant division manager; W. R. Saunders, superintendent of manufacturing operations; S. W. Sayre, division comptroller, and W. R. Burton, superintendent of engineering and services.

Hull joined the Kingsport organization in 1931 and has been superintendent of TEC's Acid Division since 1936. He was director of chemical production for Clinton Engineer Works—TEC at Oak Ridge, Tenn., during World War II. Imray has been assistant to the president of TEC since 1947. He joined the Kingsport firm in 1933.

Saunders was head of the Acid Division of Holston Ordnance Works which was run by TEC for the government in World War II. Changes were announced at TEC as a result of the appointments.

C. C. Hyatt Jr. succeeds Hull as superintendent of the Acid Division. Edwin S. Painter succeeds Saunders as head of the Acetic Anhydride Dept.

The name "Hydroquinone Division" has been dropped and is reconstituted as the Organic Chemicals Division, headed by H. Von Bramer. H. D. McNeeley, as assistant to the president, takes over Imray's duties.

Color Movie on Japan, Lecture Slated by Club



Karl Robinson on location for "Japan Journey."

An intimate glimpse of present-day Japan, including the atomic bomb city of Hiroshima, will be presented to Kodak Camera Club members Jan. 24. Karl Robinson, noted film lecturer, will show his 70-minute color movie, "Japan Journey," in the KP auditorium in Bldg. 28. The program begins at 8 o'clock.

Robinson has spent 25 years in foreign fields. He has made photographic studies of Japan, China, Germany, Greece, Switzerland and Alaska. He completed "China Journey" just ahead of the Communist surge that has closed that country to foreign travelers. This has been followed by extensive travel in Japan and the subsequent release of "Japan Journey."

Limited Resources

This postwar film story of Nippon presents aspects of Japan's limited natural resources. It gives extensive coverage to her picturesque pearl industry and to the manner in which she is being aided by our Army of Occupation.

Tickets are available now without charge at the Kodak Camera Club, Bldg. 4, KP; Harry Irwin, KRC; John Doyle, CWRC, and Cap Carroll, HEAA.

Kodak Gives Info On Special Plates

Special sensitized plates and films for the scientific and industrial laboratory are described in an eight-page Kodak booklet.

It includes a description of emulsions available for spectrographic work, photomicrography, and nuclear track studies. Complete information is given regarding the sensitivity of these emulsions. The booklet is available without charge from the Industrial Photographic Division.



Like It? — This attractive six-room house just completed and for sale by Peter Weaver, builder, is fairly typical of the 50 homes in this tract, frequently referred to as "Weaver Village." About 90 per cent of these homes are owned by Kodak people and are financed by Eastman Savings and Loan. This house is at 469 Weidel Rd., off 646 Bay Rd.

EK Careers Close for 2 Technical Men

Two technical service representatives, each with a long photographic service record, retired Jan. 1. They are Roland Metzger, Daytona Beach, Fla., and Ed Byrdsdorfer of King, Wis.

Metzger came to Kodak from the Duarski Studio in Duluth, Minn. Prior to his service in Duluth he worked for several leading photographers in America. An interesting highlight in his career was his work in photographing the Metropolitan opera stars.

Metzger began his EK career May 8, 1928, as a technical representative. In that capacity he spent 21 years in New York City, where he contacted all types of photographic consumers — among them some of the largest in the country. Metzger covered portrait and commercial photographers as well as the photofinishing and Graphic Arts trade.

Trained Technical Men

Through the years, Metzger has assisted in training many new technical representatives. He also made numerous prints for Kodak's displays at conventions.

For the past six months he has been in Florida, where he will make his home.

Ed Byrdsdorfer began his photographic work in 1903 with the Ford Lewis Photographic Gallery in Celina, Ohio. He worked in a number of photographic studios before joining Kodak.

At the time of his retirement, Ed rounded out 25 years with Kodak. He began service Jan. 1, 1924, as technical representative in the



Byrdsdorfer

Metzger

Fort Wayne, Ind., territory. In 1928 he was transferred to the Pittsburgh area as a film and plate demonstrator. Ed remained in that area until October 1944, when he was transferred to Wisconsin. For the past five years he has covered the eastern half of Wisconsin and the Michigan peninsula.

Taught at Winona

Byrdsdorfer spent 21 summers in the Photographic Association of America Summer School of Photography at Winona, Ind. Here he was a Kodak representative and instructor of negative processing and general film processing.

At the 1949 convention of the Wisconsin Professional Photographers Association, Ed was presented an honorary life membership. He is also a PSA member.

5 Years Ago

(KODAKERY Jan. 16, 1945)

Kodak folks have given 22,759 pints of blood to Red Cross, mostly on visits of mobile unit. Frank Noce tops list of donors with 20 pints, with Mr. and Mrs. Homer Kenyon just a pint behind. They're all from Kodak Park.

Perley S. Wilcox, president of Tennessee Eastman since 1933, becomes chairman of board of TEC; succeeded to presidency by James C. White.

Gen. H. C. Ingles lauds Kodak for war production in 1944 in letter to T. J. Hargrave.

Camera Works' telephone system expanded. . . . Herbert Dean, F.D. 7, tops Park's suggesters for period with \$250. . . . Kodak Park girls' basketball team upsets Hawkettes, 26-15. . . . KO War Activities Committee seeks boost in payroll deduction War Bond buying.



Coach Is Good Salesman for EK — "I have been telling everyone about Kodak's new Daylight Projection Viewer. In fact, I think I have sold one for you right now. They're the best thing I have found since I began in football," declared Lefty James, Cornell's noted gridiron coach. Above, James, standing, uses the new projector to show Lew Swift, KO Cine-Kodak Sales Div., the Big Red team in action. "Being able to work in the daylight," he continued, "saves about 30 per cent of the time usually needed to go over a game." The only complaint he had about the new projectors is that he has a hard time keeping his assistants from "stealing" them.

Photo Patter

Silhouettes Are Fun to Make, Enjoyable Party Stunt, Too

Looking for something different to try with your camera on a winter's evening? How about some silhouettes? They're easy to make and lots of fun. You might even try some silhouettes as a party stunt. Just hang a sheet in an archway with a light behind it. Place the "actors" between the sheet and the camera. The bright light behind the sheet makes the people in front of it stand out in striking silhouettes.

A good idea for a party stunt is to tell the guests, some singly and others in groups, to strike poses depicting some action. Then snap 'em.

Some of the guests probably will pose as jitterbugs, orchestra conductors, ice skaters, etc. Naturally, profile poses are best.

Simple Procedure

The technical aspects of silhouette making are very simple. The bulb behind the sheet can be a No. 1 photo flood in a reflector. With this arrangement your exposure will run about one second at f/8 when using fast panchromatic films. With a box camera use the largest opening and allow for an exposure of about two seconds. Experiment a bit for best results. If you have regular snapshot film in the camera, just double the above exposure times.

You can use a regular 100-watt bulb for your light source if you wish. In this case, if the bulb is in a reflector and your film is the fast panchromatic type, the exposure will be about three seconds at f/8 for the adjustable camera. It would be about eight seconds for the box camera.

Silhouettes can be made outdoors as easily as inside. Place your sub-

C. W. Ring Retires After 25 Years

Charles W. Ring, outside salesman for the N. Y. 39th St. Store, was honored recently at a retirement and 25-year dinner at the Columbia University Club.

Presentation of the 25-year pin and Eastman Memorial Medal, plus gifts for Charley and his wife, was made by Manager George E. Suddell.

Speakers who paid tribute to their retiring associate were Assistant Manager William Falconer, George Fincke, James Curran, John Biddle and Anthony Colagiacomi.

Special guests included Mrs. Charles Ring, son Richard and his wife, Jim Lehman, retired Shipping Dept. head, and Adelaide Kurz, former N. Y. Stores member.

Tables were decorated with flowers and the ladies wore corsages. Solos were rendered by Angelo Napoli and Abe Hoffberg.



Ring



Try 'em — If you haven't tried any silhouettes, why not take a whirl at it now. All you need is a white sheet with a light behind it to make your subjects stand out.

Girls' Valentine Party Feb. 16 Features Style Show, Dance



Calling All Girls—A feature of the KPAA Girls' Valentine Party to be held Feb. 16 in Bldg. 28 will be a fashion revue featuring spring and summer finery. KP girls will share the spotlight with professional models. Shown here are two of the Park girls rehearsing their roles. They are Mary Ellen Flanagan, left, B-29, and Betty Adams, B-28. Looking on, left to right, are Dorothy Upchurch, B-65; Betty Crouse, KPW Medical; Ann Carroll, B-65; Helen Miles, B-12; Betty Powers, B-42; Katherine Jacobs, B-65; Winnie Walters, B-42, and Doris Berquist, B-42.

KPAA girls are readying plans for a Valentine party to be held Thursday evening, Feb. 16, in the Bldg. 28 gym.

A dinner to be served in the second floor cafeteria from 5:15

Green Retires; Started in 1915

Fred S. Green of the KP Industrial Engineering Dept. retired Jan. 1.

Green came to the Park in 1915 as a member of the Finished Film Supplies Dept. In 1918 he left for military service, subsequently serving in all major operations of World War I.



Green

Upon his return he joined the Box Dept., transferring in 1924 to Industrial Economy, now Industrial Engineering, where he remained until his retirement.

Fred plans to devote most of his spare time to a private business in which he has long been interested. A son, Howard, is at the Distribution Center at Kodak West.

Square Dance Friday

KP devotees of the square dance have another treat in store for them Friday evening, Jan. 20.

Tickets are now on sale in the KPAA Office at 80 cents each.

to 6:30 will start festivities. Stage entertainment, featuring KP talent, will be presented, with Chet Keehley's orchestra providing the music.

Highlight of the evening will be a fashion revue, sponsored by B. Forman Co. and introducing spring and summer finery worn by both professional and KP models.

Boy friends and husbands of the girls will be admitted to the gym after 9:30 for dancing.

Serving on the advisory committee for the affair are Emma Weis, Bldg. 65; Ena Titus, Bldg. 2; Mary Whalen, Bldg. 42; Helen Sielaff, Bldg. 12; Marie Oldach, Bldg. 2; Dorothy Celehar, Bldg. 25; Alma Delles, Bldg. 42, and Caroline Brooks, Bldg. 18.

Lab Folks Honor 40-Year Member

Approximately 60 members of the Industrial Laboratory, Bldg. 23, gathered at Ridgmont Golf Club recently to honor Margaret Townsend. The occasion was her 40th anniversary with Kodak.

Henry B. Lea, master of ceremonies, introduced Harry Vick and F. J. Hopkinson, who reviewed Margaret's long career with Kodak. Lea presented her a gift on behalf of her associates in the laboratory. She also received her gold 40-year service pin.

An avid stamp collector, "Marge"

Lost and Found Quarters Moved To KPAA Office

Have you lost something lately? If you have, you may find it at the Lost and Found Dept. which has moved from the Cashier's Office to the KPAA Office in Bldg. 28.

Numerous miscellaneous articles found in or near Kodak Park have been turned in. If they are not claimed within 30 days from the time they were turned over to the Lost and Found Dept., they become the property of the finder.

Here is a list of the items awaiting identification by their rightful owners:

A textbook, "Highway to God"; 1 pair man's brown gloves; 1 pair man's black gloves; 1 man's brown glove; 2 men's sweaters; 1 lady's white scarf; 2 men's white scarves; 6 pairs glasses; 4 pairs glasses with cases; 1 lady's change purse; 6 sets of keys; 2 ladies' bracelets; 1 man's wrist watch; 1 pair sun glasses; 1 lady's green-covered coat button; 1 lady's black glove; 1 identification bracelet; 1 man's tie clip; 2 ladies' rings; 1 cigarette lighter; 1 cuff link; 1 fountain pen; 1 pocket knife; 1 lady's compact.



Lose Something?—If so, you might find it in the Lost and Found Dept. at the KPAA Office in Bldg. 28. Personal effects ranging from keys to coats find their way here with unceasing regularity. They become the property of their finders if unclaimed at the end of a 30-day period. Above, Rosemary Kenny displays her current store of odds and ends awaiting identification.

IT'S IN THE PARK



Harry Coover, John Sagal, James Guillet, Newton Shearer and D. J. Wallace have left the Tennessee Eastman Div. of the Research Laboratory to assume new duties in Kingsport. . . . Ice cream and cake were served Jan. 6 in Bldg. 120 honoring Harold Richards, who recently completed 25 years' service.

Chemical Plant Superintendent John Folwell made the service medal presentation and Assistant Superintendent Frank Thorne



Weaver

awarded Harold his service pin. . . . Dr. Max Herzberger, Research Laboratory, has returned from Cambridge, Mass., where last week he delivered two lectures at the Physical Colloquium and the Aeronautical Seminary of Harvard University.

Reginald Young, Bldg. 120, has returned to his duties after a prolonged illness.

Dorothy Garrison, Bldg. 30, and her husband are back after spending the Christmas holidays in Florida. . . . Recovering at her home from a hip injury is Lola Cockburn, Roll Film Verichrome Spooling. . . . Robert Shaw, X-ray Screen, Bldg. 16, and his wife are celebrating the arrival of a baby daughter, Betty Jean. . . . Four members of the Research Labora-

and Keith Bradley. . . . Charles Schultz, Fin. Film General, is recovering from an illness. . . .



Betty Jean Shaw, four days old, eyes Mommy through window of the hospital nursery.

Ellen Hussey, Bldg. 30, who recently spent a vacation in the Adirondacks, bemoaned the lack of snow for skiing.

William Basnip, formerly of Bldg. 25, has joined the Public Relations Dept. staff in Bldg. 28. . . . Rhoda Everett, Paper Planning, Bldg. 57, was guest of honor at a farewell luncheon given by the girls of the department in the service dining room. Rhoda has invited all her friends to visit her in Canandaigua. . . . Joan Steele, Spooling Dept., Bldg. 25, who has left the Park to take up household



They'll Help—Two tractors have been added to the Garage Dept.'s mobile equipment and already are in service. One is shown above, with E. L. Cook, left, Yard Dept. superintendent, looking on as James Corke handles the controls inside the special Kodak-made cab. The other tractor has been equipped with a rotary brush for light sweeping duty all year round.

5 Kodak Parkers Taken by Death

Five KP men, one of them in retirement since April 1948, died recently. They are R. Earl Zimmerman, Paper Mill; Luigi Rotondo, Cine Processing; Joseph A. Dreschmidt, Perforator Maintenance; William F. Benwitz, Film Emulsion Melting, and Elias L. Fetter, formerly of the Emulsion Coating Dept.

Zimmerman died Dec. 24 and Rotondo Dec. 30.

Dreschmidt started in the Machine Shop in 1920, transferring in 1927 to Perforator Maintenance. Ill since September, he died Jan. 5. Two sons are at the Park, Edward, Finished Film Supplies, and Harold, Portrait Sheet Film.

Fetter, a member of the Film Emulsion Coating Dept. for more than 35 years, died Jan. 1 at his home in Hollywood, Fla. He began his career at KP in 1912 and retired Apr. 1, 1948. A son-in-law, Barton Hutchinson, is a member of the same department.



A. I. Hess poses with P&S men who transferred. Front row, from left: Conrad Vogler, Hess and Loren Cox; rear: Elmer Richmond and Louis Vrielynck.

tory were hospitalized recently when the car in which they were riding met with an accident on Dewey Ave. They are Mary Rath, Robert Maibaum, Peter Trapolino

Stamp Club to Meet

The KPAA Stamp Club meeting, originally scheduled for Jan. 24, has been postponed to Jan. 31. Charles Wahl, Bldg. 99, president of the group, will preside.

Kodak Park Calendar of Events

CAMERA CLUB—Monthly meeting, Jan. 24, 3rd floor gym, Bldg. 28, with Karl Robinson the principal speaker, showing his color movie, "Japan Journey."
KPAA FISHING CLUB—Lessons, Tuesday evening, Jan. 31, 3rd floor gym, Bldg. 28, starting at 8 p.m.

duties, received a bedspread from her associates as a parting gift. Her husband, Art, is in Film Emulsion, Bldg. 30. . . . Seven P&S men were honored at a dinner party given by department friends. They are Dirk (Pop) Weaver, who has retired, and Loren Cox, Elmer Richmond, Conrad Vogler, Louis Vrielynck, Edward Lathrop and Ernest Steffen, all of whom have transferred to Bldg. 205. A. I. Hess presented each with a billfold on behalf of the department. Art White directed games and stunts, and Christmas carols were sung under the direction of Peter Truelson. On the committee were Viola Becker, Caroline Brooks and Nettie Diel.

3 EK Men to Address PSA Section Sunday



Lawrence R. Martin



Dr. Walter Clark

Three Kodak executives will be among the speakers at the January meeting of the Rochester Technical Section of the Photographic Society of America next Sunday.

"Photography Under Unusual Circumstances" is the theme of the meeting opening at 3:30 p.m. in the Chamber of Commerce. A buffet supper will be served at 6:30 p.m.

Dr. Walter Clark, head of the Black and White Photography Dept. of Kodak Research Laboratories, will discuss problems facing the photographer in the moist climate of the tropics. He will explain the work being done at Kodak's tropical research laboratory in Panama to overcome such problems.



Barbee

Jan Hahn of Woods Hole Oceanographic Institution will talk on the special techniques used in underwater photography.

Barbee to Show Film

A 16mm. sound color movie on "Functional Photography in Industry" will be presented by Paul Barbee, manager of Kodak's Industrial Photographic Sales Division at KO.

"Photography in the Rocket Test Program," a discussion of the Navy's use of photography in the study of guided missiles, is the subject of a talk to be delivered by Lawrence R. Martin, assistant to the manager of Camera Works. He

will speak for Carlos H. Elmer of the U.S. Naval Ordnance Test Station, Inyokern, Calif. A sound color movie will illustrate the talk.

A feature of the meeting will be showing of the Academy Award winning Technicolor movie of the Navy's last Antarctic Expedition, Lt. C. C. Shirley, who accompanied Admiral Byrd on the expedition, will present the film and describe the difficulties in photographic operations in subzero weather.

Howard E. Smith, Kodak Park, chairman of the Rochester Technical Section, will preside.

Kodak Plate Credited with Atomic Find

A new type of atomic particle is believed to have been found on a special Kodak photographic plate in experiments conducted by University of Rochester physicists.

The nuclear track plate, produced in the Emulsion Research Dept. of Kodak Research Laboratories, disclosed "strong evidence" of a neutral meson, the physicists reported.

This is the first time that this particle in a neutral state—having no electric charge—has been observed, it was said. Physicists previously had identified two types of mesons, light and heavy, with both positive and negative charges. Evidence that such neutral particles exist is considered a significant advance in the understanding of the tremendous forces within the atomic nucleus.

The finding was made in cosmic research conducted by Dr. Helmut L. Bradt, visiting professor of physics, from Switzerland; Dr. Bernard Peters, assistant professor of physics, and Morton F. Kaplan, a graduate student in theoretical physics at the U. of R.

The neutral mesons, reported by the scientists, were found in an atomic "explosion" on a photographic plate that was carried to an altitude of 20 miles by a balloon released near Harrisburg, Pa.

This "explosion" took place when one of the silver atoms in the photographic emulsion was struck by a high-energy cosmic ray consisting of an alpha particle. The photographic record of this collision has been named the "Rochester star" by the physicists.

Tax Time's Here Again!

This is to remind all taxpayers—especially new property owners! Real estate taxes will be due this month. Be sure that you get your tax bill and forward it to your mortgage holder if you maintain a tax account with them.

If your mortgage is held by the Eastman Savings and Loan and the arrangements call for payment of the taxes by ES&L, your bill should be sent to the Association before Jan. 25.

Bills covering property located in the city will not be mailed out unless requested by the owner. In surrounding towns collectors usually mail the bills directly to the registered owners.

City and county records may not have been adjusted to show new owners. In such cases the bills might go to the previous owners or be held by the collectors.

It is the responsibility of the property owner to obtain the bill. Penalties are provided if the taxes are not paid before Feb. 1.

Recordak Aids 'Sweeps'

The Irish Hospitals Sweepstakes are keeping Kodak Dublin's Recordak Dept. busy.

Vince Corcoran of the Dublin office writes that the Sweeps recently have taken 22 Recordak machines.

"The last Sweep was our first attempt, and it was a great success. We recorded on microfilm nearly 2,000,000 counterfoils (stubs)," he added.

The Sweeps, suspended during the war, are the largest and most profitable single "industry" in the Irish Free State. Since their beginning in 1930, the Sweeps, based on three annual English races, have become the largest lottery in the world.

One quarter of the profits are retained for the benefit of Irish hospitals, the rest being paid out in prize money.

Corcoran, who visited the States and Kodak Rochester in 1948, was then in Kodak Dublin's Camera Repair Dept.

He now devotes full time to the growing Recordak business. He also looks after Recordak needs of the banks of Dublin and the north and south of Ireland.

"I went home last night a bit under the weather and my wife didn't suspect a thing."

"Couldn't she smell your breath?"

"That's just it. I ran the last block home, and when I got to her I was all out of breath."

Aerial Shot Exhibit Shows Location of Historic Ruins



Beaumaris Castle—Constructed in the late 13th century, the remains of Beaumaris Castle in Anglesey, England, are well preserved today. Strongly fortified with bastions and gatehouses, it was made even more secure from enemy attack by an outer wall and moat. This photograph is from an exhibition of British aerial photography now on display in the George Eastman House, world photographic center.

Discovery of ancient ruins entirely below ground through use of photography is the subject of an exhibit now at George Eastman House.

It features unusual British aerial photographs of archeological sites in Britain. They date back to the Roman conquest.

This is first in a series of special exhibitions designed to show varied uses of photography.

Chemical discolorations of the soil and "crop markings" in even a level grain field show the presence of subsurface archeological sites only through aerial photography. This factor has made systematic aerial photography an important archeological tool.

A second group of photographs included in the exhibition features low-altitude aerial photographs. These show ruins of famous British castles and religious houses constructed during the Middle Ages.

The entire exhibition is the work of Dr. J. K. St. Joseph of Selwyn College, Cambridge. It was shown originally at the Kodak gallery in London, and later in Leeds.

Use of aerial photography as an aid to archeologists was recognized first during World War I. British fliers in Mesopotamia noted how ancient cities and irrigation systems in the Euphrates Valley could be seen in great detail.

Check Insurance On Wind Damage

Most fire insurance policies now have "broad coverage" which includes wind damage. It is recommended that those who had losses in the recent storm get in touch with their insurance agent immediately. This will eliminate any complications in arriving at a settlement later on.

If damage was caused to your property the Eastman Savings and Loan Association is ready to finance the cost of repairs with up to three years to repay, stated its spokesman. There is no red tape or cost involved other than the repayment of principal and interest. This same type of financing is available for practically all home repairs and improvements.

Winners in Salon

(Continued from Page 1)

Gibson. He won the A. K. Chapman Award and a silver medal. L. J. Bader, KP, was voted the E. P. Curtis Award. Lowell Miller, KO, earned a bronze medal; Lou Parker, KO, A. J. Parker, KP, and Warren Syverud, KP, certificates.

In the Nature Color Transparencies Class, F. Arthur Garlick, Rochester Recordak Service, has received the M. J. Hayes Award. A silver medal went to J. G. Mulder, KP, and a bronze one to E. H. Bourne, KP.



Product Study—The Industrial Photographic Lab at Kodak Office was just one of the many stops for the Kodak technical representatives supervisors when they were in Rochester last week. William E. Barr, left, general manager of the Sensitized Goods Sales Div., leads a discussion on paper. From left, the supervisors are: M. L. Bokman, West Coast; James E. Whiteley, New York metropolitan; William Campbell, Midwest, and Ed Cann, Eastern area. They spent the week conferring with various people in the Company to get up-to-date information on Kodak products to take back to the technical representatives in their territories.



Bambi and Bobbie—Bobbie DeSmit, 7-year-old son of Albert DeSmit of the Kodak Assembly Dept. at CW, and his pals have made a pet of this young doe which roams the woods near their home in Gates. That's Bob Bosdyke, a pal of the DeSmit boy, at right. First idea that the elder DeSmit had that Bobbie had made friends with the doe was when he strolled into the yard one Sunday, saying, "Dad, I got a deer." And he had.

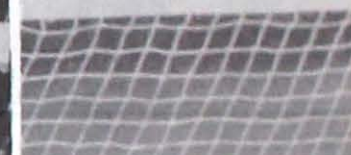
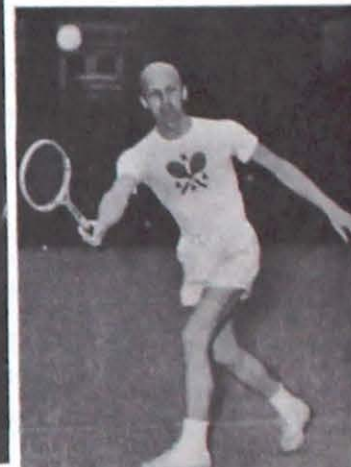
1910—KPAA Notes - 40 Years of Activity—1950



Just 40 years ago this month, the KPAA was organized. It was one of the first recreation clubs of its kind. Today, it is one of the largest, with a membership of over 17,000.

Almost every conceivable recreation is sponsored by the KPAA . . . everything from bridge and fishing to bowling and basketball. The Boys' Softball Program is probably the most renowned of its activities. The ham radio enthusiasts are among the most recent groups to form under KPAA.

There's never a dull moment for the Kodak Park Athletic Association . . . and proof of this is that the Bldg. 28 gym is booked solid every night through April for KPAA-sponsored activities.



Interesting Job

KP Woman Holds Key to Overseas Shipments, Directs Preparation of Clearance Papers

Clear the way! That's what Mary Fischer does in Export Billing at the Distribution Center. She and her group of 35 members see to it that papers are in order to clear shipment of Kodak products out of the country. It's a big job. The papers for just one shipment are plenty, and Kodak ships to some 70 countries.

Mary, a friendly woman with a contagious smile, never appears ruffled in her work. This is particularly amazing because as group supervisor she must (1) meet exact time schedules and (2) have her finger on the pulse of Kodak's export activity.

She receives weekly shipping and sailing schedules from KO's Traffic Dept. This, plus bulletins from the Chamber of Commerce and the U. S. Department of Commerce, instructions from various foreign branches and dealers, and material in the Shippers Export Encyclopedia, keep her informed. There's a good deal to digest. Rules and regulations change constantly. Exchange difficulties and dollar shortages in the foreign countries present many problems for people in export work. "How do you do it!" is a familiar phrase to Mary.

One of her biggest jobs is to set up work schedules for members of her group. This is done upon receipt of detailed records from the Shipping Dept.

From here on in, timing is important. Those shipping and sailing schedules must be met. A most important step after records have been priced is checking shipments against letters of credit, U. S. export licenses and import permits issued by the foreign governments. All have a definite time limit. Documents are prepared for the clearance of shipments through U. S. customs.

Likewise, commercial invoices are made to clear shipments through the custom departments of foreign countries. Foreign consuls require that clearance documents be presented at a specified time. She closely watches the progress

of all this detail work.

Mary also takes care of much correspondence, many phone calls and any questions that may arise. Then too, she gets inquiries from outside the department. "When does that shipment leave for Bolivia?" Or, the inquiry may pertain to billing prices. Mary knows the answers.

One group of people under her supervision does typing in Spanish. It's ironic that Mary never studied Spanish in school, but learned three other languages . . . Latin, French and German. Habit and her good language background, however, have stood her in good stead. She now knows all the Spanish she needs to.

Mary joined the Export Billing Dept. when fresh from college 22 years ago. She prepared for the teaching profession, but "I haven't been sorry that I didn't go into it," she assures. She loves her job.

You get a pretty good idea of what conditions are like in other countries, she told. Good clues are rates of exchange and the rules and regulations governing import and export of commodities. You learn your geography too.

One of Mary's most interesting pastimes is a direct result of her work. She corresponds with a girl in Cape Province, South Africa, and another in Southern Rhodesia. Both began writing when they saw her name on invoices.



Here's Mary—

The woman who's responsible for much of the paper work before Kodak products are shipped abroad is Mary Fischer, seen here in a typical pose.



Snared . . . Paired . . . Heired

Engagements . . .

KODAK PARK

Elizabeth Rowe, Film Control, to Clarence C. Noyer. . . Genevieve Erdle, Roll Film Pkg., to William Christiansen, Ind. Eng. . . Margaret Frisbee, Portrait Sheet Film, to Kenneth Aphardt. . . Edythe Tuschong, Portrait Sheet Film, to Robert Peck. . . Lorraine Ewing, Ind. Relations, to Douglas Smyth. . . Lorraine L. Forey, X-ray Sheet Film, to Joseph A. Howard. . . Corinne Martin, X-ray Sheet Film, to Ronald Tuschong. . . Helen Harris, X-ray Sheet Film, to Cyril Rowley, Roll Ctg. . . Carmella Todisco, X-ray Sheet Film, to Louis R. Luciano. . . Hazel Houser, X-ray Sheet Film, to Jacques Emond. . . Rosemary Kenny, Cashier's Office, to Edward Fischer. . . Betty Brightman, Film Testing, to Ray Anderson, Film Testing. . . Edwina P. Rinehart, Statistical, to Eugene Bailey. . . Mary Cinquegrani, Pan Spig., to Frank J. Greco, CW.

CAMERA WORKS

Mary Walsh, Dept. 72, to Robert Ragot, H-E. . . Nettie Testa, Dept. 52, to Larry DeBellis. . . Angeline Sceusa, Dept. 52, to Carl Cosgriff. . . Martha Hondori, Dept. 52, to Lincoln Coddington. . . Eva Bauman, Dept. 15, to Berwyn Payne. . . Margaret Stallman, H-E, to Roger Ruth, Dept. 90.

HAWK-EYE

Helen Callipare, Dept. 11, to John Zazzara. . . Ruby Rodas, Final Inspection, to Gar Reeves, KP. . . Florence Fruscione, Dept. 43, to Victor Benedetto.

KODAK OFFICE

Jo Calabresi, Stenographic, to Dominic Ricci. . . Lois Hess, Circulation, to Bob Morton. . . Helen Tobey, Export, to Sgt. 1/c Ray Flack. . . Dorothy Skenel, Adv. Print Shop, to Larry Hecht. . . Marge Anderson to Bob Mothorp, Repair Factory. . . Jeanne Adams, Medical, to Joseph Walczak.

DPI

Geraldine Gillette, Eastman Organic Chemical Dept., to Stanley (Kip) Jordan.

Marriages . . .

KODAK PARK

Doris Stone, Roll Ctg., to John VanDerMallie.

Births . . .

KODAK PARK

Mr. and Mrs. Louis Christopher, son. . . Mr. and Mrs. Daniel Andrews, son. . . Mr. and Mrs. Ralph H. DeVries, son. . . Mr. and Mrs. Emilio Tortora, son. . . Mr. and Mrs. Jerry Morris, son.

CAMERA WORKS

Mr. and Mrs. Kenneth Schleyer, daughter. . . Mr. and Mrs. Nick Furibondo, son.

HAWK-EYE

Mr. and Mrs. Arnold Kroll, daughter.



Myrna Made 'em—KO's Myrna Stetten, a sewing veteran, models three of the outfits she stitched herself. At left is a pretty print with a pink and white background and aqua flowers. A drape on one side appears to wind up on the other. When Myrna wants to do some "fancy stepping," she dons the creation above center. It's a baby blue bridal satin, an extra-heavy fabric, with matching purse. At right is a suit that's really different. The big bow is removable. The unusual button arrangement makes it necessary to slip into the jacket head first. The skirt is a beige wool crepe; jacket and hat are tweed, predominantly beige.



Tries for Size—Joyce Robson, KO Export Dept., slips into a pair of comfy green and yellow mukluks made by Gertrude Mosher, KO Planning Dept., at left. Jean Edgcumbe, KO Export Dept., who has started a fad for crocheting soles of the lounge socks, looks on.

KOer Makes Many Mukluks, They're Fun, Fast and Easy

Making mukluks was Jean Edgcumbe's novel introduction to crocheting.

Little did she realize at the time that her new handiwork was launching her on 40 pair of these lounge socks. She's still going strong too. Many of her friends have caught the mukluk bug from the KO Export girl.

"They're so simple," says Jean. A pair of athletic socks, two balls

of rug yarn and a crochet hook are the only "equipment" needed.

Crochet two soles, sew them to the socks and add a colorful touch of embroidery. That's all there is to it. Give Jean two free evenings and presto . . . a pair of mukluks.

Would you like to make a pair? Jean submitted the directions to KODAKERY, but has a bit of advice before you start.

Buy athletic socks with nylon reinforced toes and heels. These usually are available for a little over half a dollar in the five and tens. KPAA members may obtain them in the KPAA Office.

Different brands of rug yarn vary somewhat in texture. Jean has found Clark's O.N.T. excellent. The KOer's best pointer is to crochet two or three colors into the mukluk. It's more fun this way. If you do this, purchase three instead of two balls of yarn.

MUKLUK DIRECTIONS

Use metal hook No. G or smaller, if desired.

These directions are for 8-, 9- and 10-inch soles. In directions where three figures are used, the first figure applies to the small size, the second figure to the medium and the third to the largest size.

SOLE—With lightest weight cotton rug yarn chain 22-26-30. First round—3 sc in second chain from hook (heel). Sc in each of next 11-13-15 ch; dc in each of next 7-9-11. Four dc in last ch (toe).

Then working along opposite side of foundation chain, make dc in each of next 7-9-11; sc in each of next 11-13-15. Second round—sc in both loops of each st around, increasing 2 sc evenly across heel and 5 sc evenly across toe. (To increase, make 2 sc in 1 ch.)

Repeat last round 3 or 4 more times, according to width desired.

Next round—Turn. With wrong side facing, work sl st (slip stitch) in each sc around.

Following round—Turn. Chain three; dc in the back half of each sl st. Join with sl st in top of ch 3 first made.

Next round—Ch 1 and make 2 rows of sc. Next round—Sc around, decreasing 3 sc evenly across heel, and 7 sc evenly across toe. (To decrease, insert hook in next st and draw loop through. Do the same with the next st and then draw yarn through all 3 loops on the hook.)

Join and fasten off; put sock on foot and pin sole in place. Sew sole to sock, using 2 strands of the 4-ply yarn. Don't use long strands, as they break easily.

Sc with colored yarn around top of socks and embroider a design on front. Knitting yarn is suggested for embroidery work.

The Market Place

KODAKERY ads are accepted on a first-come, first-served basis. Department correspondents in each Kodak Division are supplied with ad blanks which, when your ad is typed or printed on them in 25 words or less, are put in the Company mail addressed to "KODAKERY," or handed in to your plant editor. All ads should be received by KODAKERY before 10 a.m., Tuesday, of the week preceding issue. HOME PHONE NUMBERS OR ADDRESSES MUST BE USED IN ADS. KODAKERY reserves the right to refuse ads and limit the number of words used. Suggested types are: FOR SALE, FOR RENT, WANTED, WANTED TO RENT, LOST AND FOUND, SWAPS. KODAKERY READERS ARE ASKED TO PLACE ADS ONLY FOR THEMSELVES AND HOUSEHOLD—NOT FOR FRIENDS OR RELATIVES. TO DO THIS IS TO DENY SPACE TO THE PEOPLE OF KODAK FOR WHOM THIS SPACE IS RESERVED.

AUTOMOBILES FOR SALE

Chevrolet, 1938. 416 State St.
Chevrolet, 1948 Aero sedan. Can be seen at 76 Burling Rd.
Chevrolet, 1949, Tudor. Gen. 5475-W.
Ford, 1939, Convertible. Cul. 0337-J.
Ford, 1947, Delux sedan, \$895. Char. 0778-W.
Ford, 1940, Delux coach. Hill. 1643-W.
Hudson, 1940, Tudor. Can be seen any time at 746 Monroe Ave., or call Char. 3040-R.

FOR SALE

ARVIN HOT WATER HEATER — \$12. 73 Averill Ave.
BABY BED—\$15. Selma Bain, 2452 Browncroft Blvd.
BABY CARRIAGE — Hedstrom, \$20. Glen. 5434-W, after 6 p.m.
BABY CARRIAGE—Storkline folding. Also West Bend sterilizer; two maternity dresses, size 14. Gen. 5323-J.
BABY CARRIAGE—Whitney, \$10. 581 Falstaff Rd.
BABY SITTING — By older woman available at reasonable rates. Char. 2175-M.
BASINETTE — Also washing machine. Glen. 1985-M.
BEDROOM SETS—Two. One ivory and one mahogany colonial style; double beds complete with dressers and chests. Gen. 5336.
BEDROOM SUITE — Complete, solid hard wood, light finish, \$150. Baker 2021.
BICYCLE—Boy's 26", balloon tire, \$5. Also Rexair cleaner and humidifier. Glen. 3296-R.
BICYCLE—28" girl's, \$15. Mon. 6265-J.
BICYCLE—Girl's full-size, needs tires, \$15. Also 3-piece living room furniture; bedroom set; rockers, ideal for cottage. Glen. 2146-R after 6 p.m.
BICYCLE—Man's, Schwinn. Cul. 4520-M, after 5:30.
BINOCULARS—10x80 power. Also table radio with shortwave. Or will swap for wire recorder, radio equipment or American Flyer train accessories. 461 Manse Lane off Creek St., Cul. 5863-W evenings.
BOOKCASE — Oak, adjustable shelves. Also living room suite, blue velvet two-piece; 11x13 Olson all-wool reversible rug; chifferobe, waterfall design; chest of drawers; Simmons studio Hide-A-Way bed. Gen. 8002-W.
BOWLING BALL — One Speigel grip. Manhattan; 1 Bates grip, Evanite, \$10 each. 624 Eaton Rd., after 5 p.m.
BOWLING BALL—Three finger, leather bag, \$15. Also heavy duty outside light string, porcelain and rubber sockets with bulbs, ideal for used car lot, \$10. Cul. 5764.
BUCKET-A-DAY STOVE — Hamltin 9281, after 6 p.m.
BUFFET—Sheraton walnut. Cul. 2079.
CAMERA—4x5 View, all swings gray and chrome finish, 1/4.5, 7/12" lens, \$65. Glen. 0636-J.
CAMERA—Cine 8, Model 20. Also case, haze filter, portrait attachment, tripod, \$30. Mon. 4836-R.
CAMERA—Retina #1, Schneider-Xenar f/3.5 coated lens, compur-rapid 1/500 shutter, leather carrying case, photo electric meter, \$55 complete. Glen. 2469-M.
CAMERA—Rolleiflex, Tessar f 3/5 lens, pre war model. Also case, combination sunshade and filter holder, \$135. Char. 0828-W.
CAMERA — Retina 35mm. No. 2, \$80. Glen. 6721-R after 5 p.m.
CAMERA—Speed Graphic, 3 1/4 x 4 1/4. Anniversary model with Mendelssohn speedgun. Also Hugo Meyer range finders; film holders; film pack adapter; lens shade; K2, A and 85B filters; carrying case; quick-set Elevator Senior tripod. Muriel Spindler, Char. 2157-J.
CAMERA—Zeiss Ideal B, 9x12 cm., Zeiss Tessar f/4.5 filters and lenses, cut film holders, film pack adapters, developing tank, \$110. Mon. 4391-W.
CAMP TRAILER—Higgins 1947, extras. Glen. 5535-M.
CANARY—Also bird cage. Char. 1883-J between 5 and 6 p.m.
CELLAR DRAIN SUMP PUMP—Char. 0638-J.
CHILD'S AUTOMOBILE—\$12. 111 E. Henrietta Rd.
CHINA — Imported Limoges Haviland, conventional design. Glen. 0764-M.
CHINA CABINET—Maple. Also rollaway bed 39" wide; Rheem automatic gas water heater; coil springs. Glen. 1197-R.
CLOTHING — Three women's coats, sizes 12 and 14. Also icebox and antique rocker. Glen. 5600-R.
COAL—Five tons stove. Gen. 5475-W.
COAT—Black cloth, with silver fox collar. Char. 1789-M.
COAT—Lady's winter size 12, blue with blue fox collar. Gen. 7378-R.
COAT — Mouton lamb, short, size 14. Mon. 4320-J, after 6.

FOR SALE

COAT — Fuschia, with Persian lamb trim. Also black coat; black velvet evening wrap; two formals, size 16; silver fox fur; pink gabardine snow suit, size 2; man's suits and coats, size 42 long. Char. 0044-M.
COAT—Size 14, gray with fur collar, \$15. Also girl's bike, \$10. Hamltin 3001.
COAT—Woman's red Chesterfield, size 16. Also gray wool suit, size 18. Glen. 3030-M.
COATS—Girls', two, size 14, \$10 for both. 42 Locust St.
COMBINATION RADIO AND PHONOGRAPH—Emerson, \$10. Locust 9718, after 5 p.m.
COT — Roll-a-way. Also Philco table model combination. Glen. 6715-W after 6 p.m.
DIATHERMY — Short-wave, excellent for home use, \$50. Cul. 2650-W.
DINETTE SET—Modern table, 4 chairs. Cul. 4828-J.
DINING ROOM SUITE—Black walnut Queen Anne, extension table, 5 side chairs, master chair, buffet, china cabinet. Also Simmons daybed; pair man's ski boots, size 9. Glen. 0885-R.
DINING ROOM SUITE — 9-piece, walnut, large table with 4 extension boards. Also ice skates, size 4, \$2. Mon. 6465.
DINING ROOM TABLE — Extension, with 8 leaves, hand-carved legs. Also other furniture and household furnishings. Cul. 3715-W.
DISHES—French Haviland, service for 12. Baker 1423.
DOG—One year old, half cocker, half springer, free to anyone who will give him good home. Char. 2835-J.
DRESSES—Sizes 12 and 14. Hill. 2934-W.
ELECTRIC SUN LAMP—\$2. Also man's overcoat, blue, size 40, \$8. Hamltin 9552.
ELECTRIC TRAIN—American Flyer, 40 sections track, 150 watt transformer, 6 cars, locomotive, tender. Char. 1370-W.
ERECTOR SET—Gilbert #6 1/2, complete. CW KODAKERY 6256-334.
EVENING GOWNS—Chiffon and taffeta, both white; orchid satin, all size nine. Glen. 4340-W.
FENCE—50 ft. and 5 steel posts, \$10. 88 Biltmore Dr.
FIREPLACE SET—Consists of andirons, folding screen, shovel, broom, poker and holder, all of solid brass. Glen. 5227-R.
FUR COAT—Hudson Seal, 38" length, size 4. Glen. 4396 after 5:30 p.m.
FUR COAT—Muskkrat, size 18, lining and fur in good condition. Char. 3466-J.
FUR COAT—Mutation muskrat, with hat to match. Glen. 4924-M.
FUR COAT—Size 40. Gen. 6725-R.
FURNACE—Coal, with forced hot air system, blower, motor available. Glen. 3036-R.
GAS RANGE — Magic Chef. Spencerport 3-4546.
GAS RANGE—Norman, 4-burner with oven, \$10. Glen. 4279-W.
GAS STOVE—Norman, \$2. Glen. 6220-R.
GAS STOVE—Table top, pastel green, automatic oven heat control. F. D. Janoska, 103 Saranac St.
GAS WATER HEATER — Side arm. Glen. 2561-M.
GREEN SATIN—Size 12. Char. 0788-W, after 5:30 p.m.
GUN—German Luger automatic complete with extra clip. Locust 8276 after 5 p.m.
HAMSTERS—Nice for pets, male, \$1; female, \$1.50. Char. 1027-J.
HAND CLEANER—Kenmore Jr. Also car heater. Hamltin 3119.
HOT WATER TANK—30-gal., with gas burner and coil, complete, \$10. 21 Lyndhurst St., Hamltin 2493.
HOUSEHOLD FURNISHINGS — Beds, chests, rugs, oak dining room suite, dishes, kitchen set. Also full-dress suit, size 36 regular. Glen. 7140-J.
HOUSEHOLD FURNISHINGS — Maple bedroom set; modern living room suite; 12x15 rug; bridge lamp; floor lamp; 2 end tables; Philco combination radio; table lamp; telephone table and chair; Hamilton Beach mixer; electric iron; Toastermaster; Hotpoint refrigerator; Norge gas range, 58 Colonial Rd., between 9 a.m. and 2 p.m.
ICEBOX—Colaire, white porcelain, \$15. 349 Orange St., Gen. 1196-W.
ICE SKATES—Girl's white shoe. Char. 3107-M.
ICE SKATES—Hockey, white shoes, size 2, \$3. Mon. 3684-M.
ICE SKATES—Sizes 2, 3, 4, black, \$3.25 each. 434 Thomas Ave., Char. 0516-W.
ICE SKATES—Women's, white, size 9. Also black, sizes 8 and 9. Cul. 5653-M.
IRONER — Iron-Rite, white, \$140. Gen. 7531-M after 6.
IRONER—G. E. motor. Char. 2690-J after 6 p.m.
KITCHEN SINK — White porcelain 36" with mixing faucets, drain board and trap, \$10. 1237 Long Pond Rd.

FOR SALE

LAMPS—Two end table. Also Jewel clock; radio. 36 Ridgeway Ave.
LIVING ROOM SUITE—Maple, 3-piece. Glen. 3140-J.
LIVING ROOM SUITE — Two-piece frieze. Apt. 9, Standish Apts., 49 Troup St.
LIVING ROOM SUITE—Two-piece blue mohair. Also wine color tapestry chair with foot stool, \$150. Baker 5467.
LOT — 52'x126', all improvements, 10 minutes walk to KP, handy to new Shopping Center. Glen. 6220-R.
MIDGET MOTORS—One Ohlson and Rice 19, 1 Herkensen O.K. 29", and 1 Hurricane 24, will run glow-plug or ignition system. Locust 8936, between 5 and 7.
OIL BURNER — Space heater for 1-2 rooms. Baker 0547.
OSCILLOSCOPE — Three-inch Claude-Bringle, with vertical and horizontal sweep circuits, \$25. Cul. 3863-M.
OUTBOARD MOTOR—5 h.p., \$10. Cul. 3249-M.
OVERCOAT—Clippercraft herringbone. Also used gray overcoat and 2 gray suits. Cul. 0442-W.
OVERCOAT—Man's imported wool, size 38-40, too large for owner, \$25. Also double coil spring, \$15; double bed flat spring, \$3; Bucket-A-Day stove, \$8. 113 Ridgeway Ave., Glen. 6939-R.
OVERCOAT—Man's, National, size 36, blue. Also brown wool trousers, 28" waist, new. Char. 0417-J.
PIANO—Fisher, \$15. Glen. 7202-R, 5 to 7 p.m. only.
PIANO—Spinet Minipiano, walnut. Also Westinghouse Laundromat. 338 Cedarwood Terr.
PROJECTOR — 16mm Keystone, new bulb. Also 15-shot 22 automatic rifle with scope; child's desk. Glen. 0607 or Gen. 1402-M Sundays and evenings.
RABBITS — With breeding equipment, cages, feeding bowls. Glen. 3219-W after 4 p.m.
RADIATOR—68 sq. ft., \$20. Also 100 ft. of 1" black pipe, unused. Gen. 7036-M.
RADIATORS—Three, hot water. Also washbowl. Make small offer. Glen. 1715.
RADIO AND PHONOGRAPH — 1949 model. 67 Parkview Terr.
RADIO PHONOGRAPH—With cabinet, \$25. Cul. 3951-W, after 4 p.m.
RADIO — Philco console model. Char. 3053-R.
RADIO — Philco combination, walnut, 1942, \$50. 4042 West Henrietta Rd., Mon. 1820-J.
RADIO — Philco console. Also Easy Spiralator washing machine. Cul. 1518-R.
RADIO—Philco floor model, \$10. Gen. 7732.
RADIO—RCA Magic Eye, 10-tube with 3 wave band, floor model, \$60. Cul. 5025-J.
RADIO—1948 Spartan console combination, AM-FM. Char. 3648-R after 6 p.m.
RADIO—RCA portable, electric or battery. 954 Plymouth Ave. S.
RECORD CHANGER—Webster-Chicago, 10-12 inch, 78 rpm, \$15. Also Philco LP record player. Baker 8365.
RECORD PLAYER — Admiral, walnut cabinet, plays 10 and 12 in. records. Mon. 8554.
RECORD PLAYER — Three-speed. 240 Leonard St., Apt. 104.
REFRIGERATOR — Coldspot, 1516 St. Paul St., rear, between 5 and 7:30 p.m.
RUG—Axminster 9x12, floral pattern. Also velvet club chair, blue and tan; triple plate glass mirror; 3 cabinet drawers, 16"x24"x10". Glen. 2870-W.
RUG — Plain blue, all-wool Mohawk, 7' 9"x9' with pad, \$25. 215 Flower City Park after 5 p.m.
RUGS — Two, scatter size, burgundy with fringe edge, \$7. Mon. 3312-W.
SEWING MACHINE — Perfect make, motor conversion, excellent stitcher. Char. 0819-J.
SEWING MACHINE — Singer portable, round bobbin. 126 Johnson Rd., after 6 p.m.
SEWING MACHINE — White treadle with accessories, \$20. Gen. 2261-R after 6 p.m.
SHOES — Either dress or sportswear, size 4-B. Also suit, size 14. Hill. 2934-W.
SIDE-ARM HEATER — Also pot-belly stove. Char. 2928-M.
SKATES—Boy's hard-toe Hockey, J. C. Higgins, size 4, new, in original carton, \$6. 190 Scholfield Rd., Glen. 1143-R.
SKATES — Girl's, figure, white shoes, size 5. Also baby carriage, Thayer; playpen; high chair. 98 Roth St.
SKI BOOTS—Size 8, \$5. 434 Thomas Ave., Char. 0516-W.
SKI SHOES—Size 9. 180 Asbury St., Mon. 3000-R, after 6 p.m.
SKI SUIT—Girl's junior size 10, dark brown, reversible zippered jacket. Glen. 3580-J.
SNOW PLOW—Attach to bumper of car for snow removal. Char. 0590-R.
SPRING—Double coil, \$6. Glen. 6839-R.
STERLING SILVER—Service for eight. Gen. 5303-J, evenings.
STORKLINE CARRIAGE — Crib complete. Also Taylor-Tot with pad; vanity with large mirror, dark mahogany with matching commode. Char. 2999-W.
STOVE—Tappan gas, 4-burner, divided top, \$60. 24 Burbank St.
STUDIO COUCH—Simmons. 38 Leonard Rd., Char. 0651-M.
STUDIO COUCH—With slip cover. Also 18 ft. ladder, 1 section; used lumber, 4x4, 2x6, 2x8, and 6x6; Bucket-A-Day stove and galvanized tank. Locust 9059.
TETTER BABE—Play pen and pad; Whitney baby buggy; Taylor-Tot; bathinette, all for \$25. 219 Fulton Ave., upstairs front, after 6.
TENNIS RACKET—Wright and Ditson All-American with Spalding press, \$5. Char. 2011-W.

FOR SALE

THERMOSTAT—Cul. 1734-W.
THERMOSTAT—For coal furnace with all controls, \$10. Also a Bucket-A-Day hot water heater with side arm gas heater and 20-gal. tank, \$10. Hamltin 9552.
THERMOSTAT — Langie's, \$25. Glen. 5041-W.
TIRE—4.75x19. Glen. 0576-W.
TRAIN — American Flyer, complete tracks on board. Also GE upright vacuum cleaner. Gen. 7732.
TRAVELING BAG—Man's, genuine top grain cowhide Valpack, \$15. Mon. 2417-M.
TYPEWRITER — Royal portable, \$50. Char. 2762-M.
TYPEWRITER—Underwood with wide carriage. Also Argus 35mm. model "A" camera with case. Glen. 0804-M.
VACUUM CLEANER—Hoover with attachments. Char. 2254-J.
VACUUM CLEANER—Singer, \$45. Glen. 6830-J.
VENETIAN BLINDS — Five, 28 in., standard window. Char. 3939-R.
WASHING MACHINE — Easy, model VP-9 with vacuum cup action, electric water pump, white finish. Glen. 1522-R.
WASHING MACHINE—Apartment size. Glen. 6281-M.
WASHING MACHINE — Bendix automatic, deluxe model, plus all plumbing, \$100. 512 Daytona Ave., Webster.
WASHING MACHINE — G-E, \$30. Glen. 2043-R evenings or weekends.
WASHING MACHINE—HotPoint, with spinner, \$15, good for basement. Char. 0216-M.
WASHING MACHINE — Kenmore, \$25. Char. 2155-R.
WEDDING DRESS — White satin brocade, Princess style, size 17. Cul. 3021-M.
WHEELS — Also springs, axel, tires, welded for making trailer, \$12. Also car top box with clamps, \$6. 12 Bartlett St.

HOUSES FOR SALE

HOUSE—New, 4 rooms with bath and large dinette, expansion attic, oil heat, storm windows and screens, lot 50x130, 440 Britton Rd.
HOUSE—Five rooms, garage-workshop, 1 1/2-acre lot, modernized, low taxes, in North Bergen, immediate possession, reasonable. Best route Stony Pt. Rd., off Buffalo Rd., west on Dewey St. across Lake Rd to Reed Rd., west to N. Bergen Rd., 1st place west of church. Carl Huhtanen, R.I. Bergen, N.Y.
HOUSE—Six rooms, beautiful location, with attached garage, screened porch, large living room with fireplace, master bedroom with wardrobe closet. 478 Winona Blvd., Sat. or Sun.
HOUSE — Seven-room Dutch Colonial, attic, automatic heat, hot water, free school tax district, dead end street, lot 45x168, 214 Bakerdale Rd., Char. 2328-W.

WANTED

ACCESSORIES—For H. O. model trains. Char. 2880-M.
AMMUNITION—For 45 cal. automatic and 9mm. for German Luger. Also a reloading outfit. Mon. 2625.
CAMERA—Cine-Kodak, Model K. Char. 2350-M.
CONTACT PRINTER—8x10 or larger. Char. 3326-M.
GARAGE—Between Clifford Ave. and Herman St. or Hixon St. Baker 4084.
GARAGE—In Driving Park, Pierpont vicinity. Glen. 6417-W.
GARAGE—Near H-E, from 7:30 a.m. to 4:45 p.m. Glen. 4556-W.
GARAGE — Year-round, vicinity of Jewel and Norton St., Glen. 0636-J.
ICE SKATES—Girl's, size 6, white preferred. Spencerport 455-R.
METRONOME—Gen. 2877-W Sat. or Sun.
PIANO—Baby Grand or small upright, 373 Fernwood Ave.
PIANO — Small upright, spinet type. Cul. 0276-J.
PIANO—Spinet. Glen. 2432-R.
POOL TABLE — Folding, home type. Mon. 5976-J.
RIDE—Douglas Dr. Chili Rd. section to and from H-E, 7:48 to 4:48 p.m. or part of distance. H-E Ext. 430 or Gen. 0671-J.
RIDE—For 2, from vicinity Sherman and Otis Sts., to KP and return, every day, 8 to 5. Glen. 4721-W, after 6 p.m.
RIDE—From Alexander and Monroe to KP and return 7:30 a.m. to 4:30 p.m. Hamltin 9713.
RIDE — From Ballantyne bridge to Hawk-Eye and return, 7:36 to 4:36 p.m. H-E Ext. 248.
RIDE—From Blossom Rd. and Landing Rd. to Hawk-Eye. H-E Ext. 319.
RIDE—From Blossom Rd., near Winton to KP and return, 8 to 5. Cul. 0993-R.
RIDE—From Bull's Head to KP and return, 8 to 5. Gen. 6390-J.
RIDE—From Cottage St., Spencerport, to CW and return, hours 8-5. Spencerport 98-J.
RIDE—From Lake Breeze Rd., and Culver to KP, mornings only. Cul. 1718-J.
RIDE—From Mt. Hope and Linden St., to KP and return, 8 to 5. Mon. 6446-W.
RIDE—From Orchard St. and Lyell Ave. to KP and return, 8 to 5. Gen. 1588.
RIDE—From Pinnacle Rd., Henrietta to KP West, 8 to 5. Fred Hull, KP Ext. 2602.
RIDE—From Spencerport to KP and return, 7:30 a.m. to 4:30 p.m. Spencerport 198-J.

WANTED

RIDE—From vicinity Avery St., and Lyell Ave. to KP and return, 8 to 5. Glen. 5236-J.
RIDE—From vicinity of Campbell and Ames Sts. to KP and return, 8 to 5. Gen. 6348-W.
RIDE—From vicinity of Genesee-Monica or Milbank Sts. to Bldg. 65, KP, about middle of March. Gen. 2733-R, after 6 p.m.
RIDE—From Whitman-Stone Rd. to KO and return, 8-5. Mrs. Cooper, Char. 3637-M.
RIDE—From Winton Rd. and Empire Blvd. to KO. KO ext. 4212.
RIDE — To Schenectady-Albany area, any weekend. Will share driving and expenses. Glen. 5613-W.
RIDERS — From Norton-Goodman Sts. section to KP and return, 8 to 5. Geo. Roman, Cul. 0544-R.
RIDERS—From vicinity Durnan and North Sts. to KP, 8 to 5. 138 Durnan St.
RIFLE — 22 Hornet with or without scope. Also 30.06 U.S. Army Springfield. Mon. 2625.
RUG—Plain color, 9x12 or larger. Glen. 3277-R.

APARTMENTS WANTED TO RENT

Two-bedroom, centrally located, 2 adults. Cul. 3715-W.
Lower, or flat, by February 1, for 3 adults, moderate rent. Glen. 4623-W evenings.
Three-4 rooms, or flat, will redecorate, under \$50. Glen. 4266-M.
Three or 4 rooms, living-bedroom-kitchen, May or June, \$45-\$50 per month. Gen. 3509-R.
Three- or 4-room furnished, or unfurnished, for young couple with 7-month-old child, up to \$50 per month. Cul. 1965-J.
Four or five unfurnished rooms, middle-aged couple, KP section preferred. Glen. 2765-J.

FOR RENT

APARTMENT — Complete one-room. Glen. 1635-W.
APARTMENT—Four-room, heated, living room, dining room, bedroom and tile bath, gas and electricity extra, heat and water provided, \$50 per month, on Park Ave. 39 South Ave.
APARTMENT — Furnished, to share with woman, near H-E, Locust 5027.
APARTMENTS—Two, 3-room, living, bedroom, bath, adults preferred. 49 Priem St.
APARTMENT — Three lower front rooms, couple or working lady preferred. Gen. 5336.
GARAGE—Mt. Hope Ave. and Linden St. Mon. 6446-W.
HOUSE—Furnished, 3 bedrooms, 2-car garage, available now through April, St. Paul Blvd., \$150 per month, Mon. 3586 or KP Ext. 8221.
ROOM—Breakfast and home privileges. Glen. 2253-R.
ROOM—Front, for girl, automatic heat and hot water, near Lake bus, 365 Raines Pk., Glen. 0764-M.
ROOM — Furnished, for gentleman, breakfast, privileges. Gen. 3139-R.
ROOM—Furnished, warm and pleasant, near bus line. 218 Burr St., Glen. 0056-M.
ROOM—In private home, near buses, heat, electricity, phone, \$5. 39 Fort Hill Terr., Mon. 2115-R.
ROOM—Large, front, Kodak Park section. Gentleman only. Glen. 3725-J.
ROOM—Large, one or two gentlemen preferred, breakfast or dinner. Char. 2406-M.
ROOM—Private entrance, on Croastown busline, \$7 for one, \$11 for two. 23 Austin St.
ROOM — Private home, between Mt. Hope and South Ave. Mon. 2115-R.
ROOM—23 Gardner Ave., large, ground floor, private entrance, adjoining bath, use of phone, gentleman preferred. Gen. 1172-R.
ROOM—Single, furnished, garage available, gentleman preferred. 86 Radio St., Locust 6232.
ROOM — Single, gentleman preferred, opposite H-E, 28 Malling Dr.
ROOM—Studio, and kitchenette, in KP-H-E section. Glen. 6830-J.
ROOM — Suitable for 1 or 2, front, breakfast optional, near Park Ave. Mon. 6150-J.
ROOMS—Furnished, pleasant home, automatic hot water, kitchen privileges, garage. 7 Seneca Pk. Circle.
ROOMS — Singles, newly furnished, pleasant home, for gentlemen, community kitchen, automatic hot water, privileges, garage, across from KP, 417 Maplewood Dr.
ROOMS—Two furnished, one with twin beds. 324 Burr St.
ROOMS — Two attractively furnished, phone and laundry privileges, breakfast if desired. Glen. 2058-J.

WANTED TO RENT

GARAGE—Vicinity of Owen St. Glen. 5962.
LOST AND FOUND
FOUND — Earring, gold with twisted pearl dangle, near main entrance of KO. KO KODAKERY Office.
LOST — Hawk-Eye pay envelope, between Pepper Pot and Hawk-Eye. Mr. B. Ferron at H-E ext. 532.
LOST — Rhinestone bracelet, reward. Glen. 3449-J.
LOST—Ring, sardonyx, lady's, between KO and Marilyn's, Roman figure on stone, sentimental value only, reward. Jerry Conn, Billing, Roch. Br., KO.

KP Hands CW 1st Loss, Nears 2 League Titles



Tense Moments in KP-CW Court Clash — When two unbeaten teams clash on the basketball court, anything can happen. These pictures relate some of the action in last week's tense battle between Kodak Park and

Camera Works, both of whom entered the fray boasting undefeated records in the Rochester Major Industrial League. At left Chuck Nesbitt, guarded by Neale Tucker, attempts an under-the-basket shot. In the center picture the Kaypees' "Red" Overmyer endeavors to get past John-

ny Coia. "Hap" Chandler, No. 4, Chuck Gray and Ronnie Kraftschick, No. 18, can also be seen. No. 11 is CW's Tucker. Dribbling in the third photo is Ralph Taccone. The CW guard is Dick Spiegel. Kodak Park won the hard-fought contest, 63-56, to take the undisputed league lead.

Ind. Eng., Emul. Res. Upset In KPAA Basketball League

Two previously unbeaten teams fell by the wayside as Bldg. 23 and Roll Coating assumed the dual leadership in the KPAA's Departmental Basketball League last week. Gene Waddington's Kodacolor quint won the lion's share of the glory with its 45-35 upset of Industrial Engineering.

Also suffering its first loss was Emulsion Research, which bowed to Roll Coating, 56-40. Gord Anderson's Bldg. 23 aggregation moved up by virtue of its 46-34 conquest of Synthetic Chemistry.

Norm Wetzel was the big gun for Emulsion Making, scoring 20 points as Wilson Pask's netters downed Emulsion Coating, 44-39.



Wetzel

National Division			
	W	L	
Bldg. 23	8	1	Kodacolor
Roll Ctg.	8	1	Sensitometry
Film Emul.	7	1	Emul. Making
Ind. Eng.	7	1	Syn. Chem.
Emul. Res.	4	1	Bldg. 42

American Division			
	W	L	
Plate Busters	4	3	Bldg. 58
Field Depts.	5	5	Emul. Ctg.
Cafeteria	4	4	Color Con.
Bldg. 126	4	6	Testing
Bldg. 14	3	5	

INDIVIDUAL SCORING LEADERS			
Fritz Czerkas, Roll Ctg.	8	58	14
Doug LaBude, Ind. Eng.	9	50	19
Duane Hagen, Kodacolor	7	52	14
Ed Teirlynck, Emul. Res.	5	47	19

KO, CW Plan Basketball Doubleheader January 28

A basketball doubleheader involving KO and CW Major Industrial League teams has been scheduled for Saturday night, Jan. 28 at the State St. auditorium. Norm Robinson has booked the Syracuse

Silents as CW's foe, while Sid Nichols will send his KO quint against RG&E in the 7:30 p.m. curtain-raiser. The Silents are four-time national deaf mute champs. There will be no admission charge.

'Hash' McNeil Named KO Cage Commissioner

Harry (Hash) McNeil, one of Kodak's all-time basketball greats, has been named commissioner of the KORC Intraplant Basketball League. He succeeds Andy Andrews.

McNeil starred for the old Rochester Centrals, American League champs, for 11 seasons. The Kodaks, KORC quint led by "Hash," and managed by Freddie (The Fox) Fogarty, soared to the heights in industrial circles in 1925.

The KORC loop, under McNeil's guidance, was to have opened its 1950 campaign Monday night. Three new coaches are listed this season. They are Gordon Swanson, who supplants Tony Adams at the Shipping helm; Ralph Hagen, suc-



McNeil

Swanson

ceeding John Scheible as the Rochester Branch mentor, and Jack Lynch, who will pilot Repair.

Swanson, who predicts his Shippers will annex the title, lists the following players: Duane Doty,

Chuck Arnone, Tom Ioannone, Don Neufeglise, Bob Beaney, Bernie Rausch, Will Heise and Glen Bachman.

Hagen's Branch roster lists Bobby Clarke, Jim Manion, Bob Sullivan, Bob Lawrence, Bob Wilson, Boyd Losee and George (Digger) Donaher.

On the Repair squad, besides Lynch, are Dom DeFendis, George Schaller, Rudy Almagnault, Johnny Judge and Al Bertman.

The Penpushers' lineup will include Ken Kingston, John Yaeger, Jim McGee Jr., Dick Mayberry, Dick Fortman, Jack Welch and Ken Mason.

The league will play Monday nights in the KO auditorium.

U.S., Canadian Bird Stars Vie In EK Tourney This Weekend

Badminton moves into the sports spotlight this weekend as shuttlecock specialists 100 strong converge on Kodak. The event is Kodak Badminton Club's sixth annual invitation tourney, and the place will be the State St. auditorium. Play starts Saturday noon, Jan. 21, with the windup slated for Sunday p.m., Jan. 22.

Last year's champions include three Kodakers—Cliff Schmidt, KP; Doris Minges and Bernice Terhaar, KO. Cliff teamed with Bob Traquair, Buffalo, to win the 1949 Class A-B men's doubles. Doris and Bernice walked off with the Class C women's doubles crown.

Some 20 Canadian and United States clubs are expected to enter representatives.

Lois Patchen, club president, emphasized that the public is invited to view all sessions. Tickets are 50 cents each for Saturday and Sunday, or 75 cents for both days.

CW Leaders Nip Dept. 70, 32-30

Dept. 49 remains undefeated in the CW Plant Basketball League, with the 49ers' Johnny Coia and Chuck Gray of Dept. 63 waging a ding-dong battle for the loop's individual scoring leadership.

	W	L		W	L
Dept. 49	5	0	Dept. 70	2	3
Dept. 63	4	1	Dept. 66	1	4
Dept. 32	2	3	"J" Bldg.	1	4

INDIVIDUAL SCORING LEADERS			
	Fg	Ft	Tp
Johnny Coia, Dept. 49	28	11	67
Charles Gray, Dept. 63	22	20	64
Hap Chandler, Dept. 49	20	9	49
Barney Humphrey, Dept. 70	19	5	43

Play in Benefit



Lanny Schantz, left, and Sparky Zubert will be rivals in benefit soccer game here Sunday.

Kodak athletes will play active roles in the exhibition soccer fray to be staged Jan. 22 between the Thistles and the Italian-Americans. The game will be played on the Rochester Sports Club field, with proceeds going to the Rochester Polio Benefit Fund.

In the Thistles' lineup will be the Hawk-Eye trio of Jim Bird, Rob Schantz and Bill (Red) Ferron, while Lanny Schantz, Len Hackshaw, Milt Pearce, Don Crowley and Les Mort will cavort for Kodak Park. Andy (Sparky) Zubert, KP star, will play for the Italian-Americans.

Officials will be Bruce Donald, KP, referee; Jack Williams, KP, George Reynolds, KO, linemen.

Tuschong's 701 Tops Bowlers

Highest three-game total on record this season among Kodakers is the torrid 701 series crayoned by Elmer Tuschong. Rolling with Kodak Park in the Rochester Industrial League, Tuschong recently belted the lumber for games of 266, 197 and 236.

Big noise in the KPAA "A" League last week was Art Pero's 625. Art's spill included a 233 solo.

A high single game recently posted in the KPAA Cine Processing wheel was Don Wolz' 246.

SEC. 34.66 P. L. & R.

U. S. Postage
PAID
Permit 6
Rochester, N. Y.

KODAKERY
EASTMAN KODAK COMPANY
Rochester 4, N. Y.
Return Postage Guaranteed