

KODAKERY

A NEWSPAPER FOR THE MEN AND WOMEN OF EASTMAN KODAK COMPANY

Vol. 8, No. 9

Copyright 1950 by Eastman Kodak Company, Rochester, N. Y.

March 2, 1950

Kodak Hit By Short Coal Supply

As KODAKERY goes to press, it is not known just how seriously Kodak will be affected by the coal shortage. Already some operations have had to be reduced. The vital importance of conserving what coal remains has made this necessary.

Kodak Park and DPI are going on a 4-day schedule this week. These plants will be closed tomorrow, Friday, the 3rd.

Further study is being given to the situation in the other plants and Office. Whether full operating schedules can be maintained in these units is a question. It all depends on developments. In the meantime, every possible measure is being taken to conserve heat, light, and power.

Some Facilities Closed

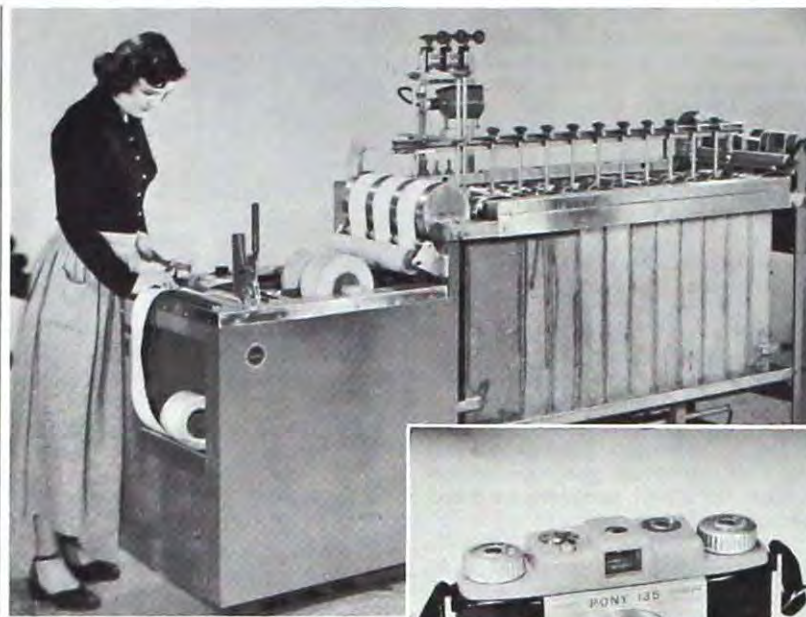
Facilities which are not vital to Company operations are being closed. At Kodak Park, the recreational areas in Bldg. 28 are closed for the duration of the emergency. Night activities in the auditorium at State Street have been canceled.

Shorter work schedules in some plants may mean that their people will be away on Friday, Mar. 10, which is Wage Dividend day. The Company is making special arrangements to distribute Wage Dividend checks earlier in the week to these people.

Company officials have expressed regret over the necessity for reducing work schedules and are hoping that a quick settlement of the coal dispute will ease the situation soon. But as we go to press, uncertainty over future developments makes it impossible to predict what is going to happen.

Strict economy in the use of steam, water, electricity, refrigeration, compressed air and heating and ventilating systems is urged. The following fuel-saving suggestions are recommended:

1. Turn off lights when not needed.
2. Shut off idle motors and other electrical equipment.
3. Shut off steam when not needed.
4. Avoid waste of gas, refrigeration, compressed air and water.
5. Report all leaks promptly.



They're New—The new Kodak Continuous Paper Processor, Model 2, is shown above with Jerry Zelden of Adv. Dept. at the operations end. The inset shows the Kodak Pony 135 Camera. Both will be shown at the Master Photo Dealers' and Finishers' Association convention.



Radio Show Shocks Walt But \$38 Prize Appeases Him

Walt Kisner knows what it's like to sit in the hot seat. He did it on radio's Truth or Consequences show on Saturday, Feb. 11. Walt, of KO's Motion Picture Film Dept., and Tom Miller and Phil Chamberlain, of KO's Photographic Training Dept., attended the Hollywood, Calif., program emceed by Ralph Edwards.

Tom and Phil claim they were most anxious to participate in the show, but it was quiet Walt, who happened to be sitting in an aisle seat, who was chosen.

His part on the program seemed simple. Five persons had lines to read. Walt's line was "ouch!" ... to be uttered when the participant next to him jumped up and pressed a button.

His exclamation, he found, was practically an automatic response. Much to his surprise, he was sitting in a hot seat, electrified by the button his neighbor pressed!



Walt Kisner

For his spectacular performance Walt received \$38 in prize money. Now he wonders if he hasn't a great future in radio.

The trio spent two weeks at the Hollywood Office of the Motion Picture Film Dept. They gave an intensive course in color photography for members of the motion picture studios and laboratories.

EK Shows Pony 135, Processor at Parley

Two new Kodak products will be introduced this month. They are the Kodak Continuous Paper Processor, Model 2, and the Kodak Pony 135 Camera. Both will be shown at the convention of the Master Photo Dealers' and Finishers' Association Mar. 20-24 in Cleveland.

Featured in the still-camera section of Kodak's big display at Cleveland will be the Pony 135—the smartly styled new camera. It completes a Kodak "team," the Pony 135 being the 35mm. counterpart of the Pony 828 Camera.

The Pony 135, however, provides automatic film stop, an automatic exposure counter, a rewind and other devices needed for use of 135 film containers. It has 34 more parts than the Pony 828, which accounts for the difference in price. The new camera is \$34.75, including federal tax.

The fine Kodak Anaston Lens, 51mm., f/4.5, provides clear, sharp pictures in black and white and Kodachrome.

The new camera is being assembled in Dept. 41 at CW.

Developed at CW

The Kodak Continuous Paper Processor, Model 2, was developed by the Camera Works Engineering Group. It was designed and is being produced by the E&M Dept. at Kodak Park.

Model 2 is smaller than the earlier model and it is not equipped with an attached drying drum.

The new processor handles from one to three strands of paper, the width depending upon the number in use. It accepts printed rolls up to 500 feet long.

Model 2 processes 1300 prints an hour of 3½x5 inches, or 1700 an hour of the 2¼x3¼-inch prints. Processing time from supply roll to wet takeup roll is 17 minutes.

All rollers and tanks in the

Model 2 are made of stainless steel. The machine requires only 8 feet 6 inches by 2 feet 2 inches of floor space. Its height is 4 feet 4 inches and the weight is 1300 pounds when loaded with solutions ready for operation.

The unit is priced at \$4500 net including federal tax.

Take a Letter!

They Wrote 'em On Clay Back In 1050 B.C.

Sumerians and Assyrians went to a lot more trouble to make duplicate copies than do KO secretaries today.

In fact, if 20th Century secretaries operated as did the scribes 3000 years ago, each of their desks would have a pile of clay.

Gordon Thompson, KO Advertising, called attention to this when he brought in two clay tablets found at Ur, Sumerian site in Mesopotamia.

These ancient people recorded deeds, bills of sale, contracts, and other business transactions on tablets of clay. Since the tablets were fragile, those bearing data of great importance were enclosed in a protective clay envelope. Duplicate text, together with necessary identifying marks, was inscribed on the outside of the envelope, Gordon explained. His father taught the Assyrian and Sumerian languages at Columbia U, and Gordon derived his interest from him.

Any 'Carbon Copy'?

It often is difficult, he continued, to determine by visual inspection whether or not one of these clay specimens is a single tablet or an envelope-tablet combination.

Breaking it open to determine if it is an envelope type often damages the specimen.

Gordon interested Bill Cornwell, Medical Technical Service Lab, in the tablets, and they found a new method of ascertaining the status without any damage.

They X-rayed the tablet, which showed up the inner one clearly. The inside hieroglyphics can't be read by X-ray, but they are always the same as those on the outside.



Gordon Thompson
... letter from long ago.

Display at Eastman House Honors Pioneer on Photos

A special exhibition at George Eastman House honors the man whose inventions formed the cornerstone of modern photography. The occasion is the 150th birthday of William Henry Fox Talbot.

The British inventor's negative-positive process was one of the basic photographic discoveries.

Rare photographs, autographed letters, documents, books and portraits by Talbot are on display this month. They are part of the Eastman Historical Photographic Collection. Museums, libraries and private collectors also have contributed to the special show.

First Paper Negatives

Two of the first paper negatives made by Talbot in 1835 are featured in the exhibition. They were lent to George Eastman House by Harold White, the British photographer who is writing Talbot's biography.

Although the negative-positive process is best known of Talbot's inventions, he is credited also with several other photographic "firsts." He published the first book illustrated with photographs, made the first enlargements and photomicrographs, made the first exposure by electric flash, and even predicted infrared photography.

His photogravure process was the first to use a mesh screen to break up the gray tones in a photograph into minute divisions of black and white. This invention

proved to be basic in the printing industry.

Fox Talbot was born at Lacock Abbey, England, 10 miles northeast of Bath, on Feb. 11, 1800. He died in 1877.

In 1833, using small cameras and wide aperture lenses, the inventor found he could record camera images on paper that had been made light sensitive with silver chloride. Talbot's first pictures required an exposure of half an hour on a sunny day.

Exact replicas of the tiny cameras used in his first experiments were made in England for George Eastman House.

Bridge Postponed

Postponement of the IMC Open Pair Match Point Duplicate Bridge Tournament was announced Monday due to the coal shortage.

Kenneth Klingler of DPI, who is tournament chairman, said new dates will be set when the serious coal situation has been solved. First date was Tuesday, Feb. 28. Play was scheduled in Recreation Bldg. 28 at Kodak Park.



'Here's the Situation'—Oscar V. Sprague, assistant superintendent of the Power Dept., informs department heads at KP of coal situation. Carey H. Brown, general superintendent of KP Service Depts., told the group at the same meeting that "every employee must be made conscious of the fact that a serious situation exists and every measure must be taken to ward off more serious consequences of the coal shortage."



Kodak Guests—An informal question and answer period dealing with Company policy and phases of plant operation featured a recent visit of a group of Rochester clergymen and their wives. Kodak President Thomas J. Hargrave and other officials took their turn at the microphone in answering the queries of the visitors. Here Craig P. Cochran, far left, director of industrial relations for the Company, addresses the assembled guests in the Bldg. 28 service dining room at Kodak Park.

European Recovery Strides Amaze Withus on UN Trip

"European recovery in the last year and a half is amazing." This was the prime conclusion drawn by Bill Withus, who has just returned from the Continent. The KO Advertising member

went to Switzerland as the United States representative to the January General Council of the World Federation of United Nations Association. He spent a few days renewing acquaintances in England, France, Belgium, Holland and Western Germany.

"Production has been tremendous in all the countries," he declared. "This is due to ECA funds and the industriousness of the Europeans," he continued. "A year and a half ago hardly anything was being manufactured in Western Germany; today shop windows are full, and there's much rebuilding."

"Main problem arising now," he added, "is to get distribution of the goods it is possible to make in all the European factories."

DPI Reveals New Circuit

An ionization gauge control circuit, capable of accurately measuring the highest vacua attainable, has been developed by Distillation Products Industries.

Called the DPA-38, the new circuit particularly is useful in determining the difficult ranges. Its high sensitivity also permits the user to take advantage of the entire life of the VG-1A Ionization Gauge Tube with which it works. The new circuit features a direct-reading scale. Another asset of the DPA-38 is its heavy-duty, adjustable, automatic relay. This assures maximum life for the ionization tube.

Furnished in a handsome cabinet of crackle finish, the unit comes complete with all necessary cords and plugs.

F. H. Satterwhite Of T-L Div. Marks 40th Milestone

Fletcher H. Satterwhite, sales manager of the Taprell Loomis Div., marked his 40th anniversary with the Company recently. He began service Jan. 1, 1910, with the Glenn Photo Stock Co., Atlanta, Ga. This firm was acquired by Kodak in 1910 and became known as Eastman Kodak Stores, Atlanta.

Satterwhite worked as a salesman for the Atlanta Store until 1925, when he was transferred to the Taprell Loomis Div. as southern traveling representative. In 1936 his headquarters were moved to Chicago.

Fletcher is a brother of Randall Satterwhite of KO Sales Dept.

A world economy must be established, he believes, and trade must be on a "one-world" basis.

Withus, a member of the Board of Directors of the American Association for the United Nations, returned from Europe with great enthusiasm for World Federation. The Federation, composed of the voluntary associations of individuals of many countries, is bringing about an exchange of ideas and a consensus of opinion on many varied topics.

Expansive Program

World betterment through studies and surveys of peacetime uses of atomic energy, manpower and population, conservation of land and development of submarginal areas are all being undertaken, he reported.

Withus was particularly enthusiastic about one mission accomplished by him during his trip. Plans now are under way to have a guide service at the Palais des Nations (the former League of Nations headquarters) in Switzerland, similar to the one conducted by the AAUN at Lake Success. In addition to promoting world knowledge among tourists in Switzerland, the guides themselves will be drawn from various countries.

Before returning to the States, Withus vacationed on the Riviera.



Historical Figures—This set of chessmen attracts plenty of attention when Art Danielson of KP Film Emulsion Coating Dept. displays it. The figures painstakingly were carved from wood by Art's father during the days immediately preceding World War II. They represent the key men in the formation of the Axis bloc. Only inches high, they are amazing likenesses of Hitler, Mussolini, Stalin et al. Although not for sale, Art places the value at around \$1000. The inset is Art.

John Mulder Keeps on Go As PSA Head

The lecture circuit in the interest of photography is keeping John Mulder pretty busy.

Fresh from a visit to the Delaware Camera Club in Wilmington, Del., where he spoke on the subject, "Color Photography for the Beginner," Mulder will fulfill three other speaking engagements in coming weeks. He's in the Film Office Division, Bldg. 26.

'Photography Is Fun'

President of the Photographic Society of America, he will appear at the Metropolitan Camera Club Council's "Tops in Photography" program Mar. 9 in New York's Hotel Statler. His topic is "Color Photography Is Fun."

On Mar. 11 he will attend the New England Camera Club Council meeting at the Boston Academy of Arts and give a talk.

At Kent University, Ohio, Mar. 21-24, he will take part in the National Press Photographers' Association conclave, speaking on "Hypersensitizing Film."

On May 13 he will journey to Cincinnati to serve as a judge on the color jury for the Cincinnati salon.

5 Years Ago

(KODAKERY, Feb. 27, 1945)

Kodak marks 50th anniversary of Pocket Kodak, forerunner of modern, roll film, box-type camera. Model for the camera was first presented on Washington's Birthday in 1895. First Pocket Kodak was compact, weighed 5 ounces and was priced at \$5.

Harold Russell, Hawk-Eye, helps write article for "Die Casting" on the engineering of M-10 Range Finder manufactured at H-E. It explains how welding methods were applied to aluminum die castings and tubing. Developments at Kodak resulted in change of design and improvement of range finder.

Lt. (j.g.) Walter Foertsch, Kodak Park Employment Office, returns home on leave. The torpedo officer's ship, the destroyer Reid, was sunk in the Philippines area.

Voted "The Ideal Patient to X-ray" by three G.I.'s serving in a general hospital in Italy is Dorothy Aitchison, Photographic Illustrations Div. Basis of judgment was picture of Dorothy appearing on "Radiography and Clinical Photography" cover.



Jim Dandy—Just before Jim Bessellieu, Kodak Territorial Management Div., left for Dallas, Tex., to supervise completion of the Dallas Branch building, his associates feted him at a luncheon at the University Club. Above, Randall Satterwhite, who emceed the party, presents him with one of the group's gifts. That's Jim at right. He's in the middle, too.

Photo Patter

Want Spectacular Pictures? Shoot Those Winter Sports

Do you like to take sports pictures? If you do, the winter scene is a must. Winter sports, with all their grace and beautiful settings, offer terrific opportunities for spectacular pictures. Most people think of skiing. That's only one of the many outdoor activities of winter. In many areas skating is popular and it offers lots of action. Tobogganing and sledding are others. There are lots more to be snapped.

Since all of these are action shots, you should use a fast shutter speed. If the action occurs close to you, use the fastest on the camera.

Here's a point to remember—motion directly toward or away from the camera is easiest to stop. When it gets around to a 45-degree angle to the camera, it requires a shutter speed twice as fast. At right angles to the camera such action needs twice the shutter speed of the 45-degree angle.

Box Camera Shots

You can get such action shots, though, even with a box camera. Snap the picture when the action is directly toward or away from the camera. And pick a moment when the action is least violent. With a simple camera click the shutter when the action is some distance from the camera.

Here's another way to stop action without using a fast shutter speed. Pan the action with your camera—follow it along through the viewfinder and snap it while the camera is moving with the subject. This way you stop the action, but get a blurred background

Get 'em on the Go—A winter action shot like this is easy to stop when the skier is approaching the camera.

which denotes movement or action in the picture.

Take advantage of sunshine when you can. It gives added punch to winter sports shots. Side lighting or back lighting usually is best. A low camera angle also can be used to good advantage on occasion.

City Clinic Hears Kent Reitz of KP

The day of single sample testing with high precision apparatus is fast vanishing, according to L. Kent Reitz of the KP Paper Service Dept.

Reitz spoke on "Statistical Methods in the Testing Laboratory" at the sixth annual clinic of the Rochester section of the American Society for Quality Control. The meeting was in the Chamber of Commerce recently.

Advances in development of precision testing equipment for the laboratory have a parallel in the increasing application of statistical methods to interpret results of laboratory tests, Reitz said.

The question of accuracy of precision tests can be answered best with statistical techniques. Use of these techniques brings improvement in testing methods, he told the gathering.

Monochrome Unit Of Club Schedules 'Beginners' Night'

A "Beginners' Night," open to all Kodak people, will feature the next meeting of the Kodak Camera Club's Monochrome Section Mar. 16 in the subbasement of Bldg. 28, Kodak Park. It begins at 7:45 p.m.

Designed strictly for newcomers in the photographic field, the session will provide a real opportunity for the beginner to learn how to get started in monochrome competitions. Those attending are encouraged to bring along as many prints as they wish for discussion. These may be mounted or unmounted, contact or enlargement.

An informal judging of the prints will be conducted, suggestions will be offered on composition, cropping, dodging and other technical points. A demonstration of trimming, spotting, mounting and other print finishing methods will precede the session.

Hotel Manager: "Did you find any of our towels in that man's suitcase?"

Hotel Detective: "No, but I found a chambermaid in his grip."

IT'S IN THE PARK



A surprise party at Rupert Gray's marked the 25th service anniversary of **Mildred Seemann**. More than 70 former and present members of the Medical Dept. attended the affair and saw **Dr. John Norris** make a gift presentation on behalf of Mildred's associates. Entertainment was provided by members of the KP Medical Dept., with **Dr. Leonard Jones** acting as master of ceremonies. Also enjoyed was the ventriloquist performance of **Louis Bonehill**, Kodak Office. . . . **Otto Behn**, Bldg. 58, was guest of honor at a retirement party tendered by the "58 Club" Feb. 18 at the Ukrainian-American Club. Otto, who lacks one month of having completed 43 years' service with the Company, received a gift presented by **Rufe Wesson**, department head. **Fred Pringle**, a retired member of the department, was on hand as a special guest. . . . **F. J. Hopkinson** and **Henry B. Lea**, Industrial Laboratory, recently spent several days in New York City, where they attended the Water Pollution Abatement Conference of the Manufacturing Chemists Association. . . . A small group of P&S Dept. members braved a snowstorm on St. Valentine's night to help entertain the shut-ins at St. John's Home for the Aged. Songs were rendered by **Emma Widman** and **Peter Truelson**, accompanied by **Dick Brown** at the piano. Color slides of the West Coast were shown by **Nettie Deil** and narrated by **Caroline Brooks**. **Gertrude Roberts** designed the favors used on the tables. . . . A wedding banquet for **Peg Preissing**, Film Processing, was held Feb. 1 in the Empire Room of the Powers Hotel. **Astrid Gleockle**, former women's counselor in the department, and **Shirley Schlottman**, Training Office, were introduced as guests. Arrangements were under the direction of **Sue Mater** and **Betty Evans**. . . . Three new volumes have been added to the KPAA lending library in Bldg. 28. They are "Love Story" by Ruth McKenney, "Mingo Dabney" by James Street, and "Jubilee Trail" by Gwen

Mildred Seemann, left, is parted on 25th Kodak anniversary. Dr. John Norris presents gift.



Their Night Out — The final KPAA men's smoker of the season lured some 1200 active and retired members to the Bldg. 28 gym Friday night, Feb. 17. Movies and vaudeville acts were on the program. A portion of the crowd is shown above.

Bristow. . . . A dinner party was given Feb. 3 at the Turn Verein Club by members of the X-ray Sheet Film Dept. for **Sarah Mears** and **Mabel Stallman**, who retired in January. The two had 27 and 26 years' service, respectively, to their credit. Each received a gift, the presentation being made by **Evelyn Bengston** and **Frances Conlon**. **Marion Hull** acted as hostess for the occasion. . . . **Robert Sherman**, Accounting, has gone to England for a five-month visit.

Joan Brennan, who has left the Industrial Laboratory to assume housekeeping duties, was a dinner guest of the girls in the department. . . . The Birthday Club of Bldg. 48 entertained **Ruth Wright** in the service dining room Feb. 21. . . . All smiles a mile wide is **Cliff Schmidt**, Bldg. 42, KP tennis and badminton star, whose wife presented him with a daughter, their first child. "She's gonna be another Gussie Moran," says Cliff. . . . **Elsie Lindsay**, Time Office, recently flew to Philadelphia to spend the weekend with her cousin. A highlight of the visit, which included glimpses of the home of Betsy Ross and the grave of Benjamin Franklin, was the stage show, "Yes, My Lord." . . . Friends of **Eddie Hunt**, Portrait Film, Bldg. 12, are extending their sympathy on the death of his father. . . . **Kay Halter**, Suggestion Office, is proudly displaying a coat of tan which she acquired while spending two weeks in Florida with her husband, Jack, and her parents, Mr. and Mrs. **Ray Fishbaugh**. Ray is a member of the Capital Assets Dept. at Hawk-Eye. The quartet divided its time between Fort Myers and St. Petersburg and reported ideal weather for swimming and sun-bathing.

"What happened after you were tossed out the side exit?"
"I told the waiter I belonged to a very important family."
"Then what?"

"He begged my pardon, asked me in again and threw me out the front door."



Prevue — Women of the KPAA got a prevue of spring styles at the recent fashion revue in the Bldg. 28 gym. Two models in the show were **Ann Carroll**, left, Color Print, and **Helen Miles**, X-ray. The evening's program included a dinner and dance.

Voting Begins for KPAA Board

Ten officers will be elected to two- and three-year terms as 24 candidates seek berths on the governing board of the Kodak Park Athletic Association. Ballots will be in the mail soon, according to **Joe Minella**, KPAA executive secretary. Results will be announced in KODAKERY as soon as final tabulations have been made, probably late this month.

Louis K. Eilers, Roll Coating, and **George W. Patterson**, Film Emulsion Coating, will vie for the presidential post vacated this year by **Dr. John Norris**, Medical Dept. The winner will serve for a two-year term.

Also making bids for key positions are **James P. Culhane**, Film Planning; **Walter C. Nelson**, Paper Finishing; **George H. Gustat**, Ind. Engineering, and **Charles McCracken**, Cine and Sheet Film General. Culhane and Nelson are contesting for the office of first vice-president, Gustat and McCracken for the chair of second vice-president. Both offices are for two-year periods.

Three trustees, including Culhane, relinquished their duties upon expiration of three-year terms. The others are **Madeline Lamb**, Bldg. 12, and **Carl Christ**, Bldg. 2. **Audrey Klippel**, KODAKERY, present recording secretary, has been renominated and will seek re-election, being opposed by **Eleanor Hammill**, Film Emulsion. **Herbert Shaw**, present incumbent, has been renominated for the office of treasurer.

Trustees Candidates

Three men and two women will be returned as trustees for terms of three years. They will be selected from the following list of candidates: **Michael Corrigan**, Printing; **James Gallagher**, F.D. 10; **Robert Gell**, Paper Mill; **Edwin Hart**, Film Emulsion; **John McEntee**, Accounting; **E. Mount Norris**, Power; **John Quistorf**, Yard; **Ray Raufelsen**, E&M Stores Warehouse; **James Scholes**, Chemical Plant Office; **Audrey Herrick**, Film Emulsion Coating; **Eleanor Judson**, Chemical Plant Office; **Melissa Mater**, Film Planning; **Frances Molinari**, Roll Film Packaging; **Jean Roesser**, Employment, and **Patricia Sullivan**, Ind. Engineering.

Harold Gunderson, Bldg. 23, is chairman of the nominating committee which prepared the 1950 slate. Assisting him were **Thomas Davis**, Bldg. 29; **J. F. Morris**, Bldg. 23; **John Tozier**, Bldg. 46, and **Harryette Lux**, Medical.

Rebers Capture Euchre Tourney

The team of **John Reber**, Bldg. 23, and **Bernard Reber**, Metal Dept., compiled 98 points over an eight-game route to sweep top honors in the third KPAA men's doubles euchre tourney of the season held Feb. 21 in Bldg. 28.

One point behind the winners were **Frank McGregor**, Yard, and **Ray Clark**, Bldg. 209. Both combinations qualified for the I.M.C. meet to be held soon at the Chamber of Commerce.

Other prize winners were **A. Pschirrer** - L. Kuech, 95 points; **George Garnham** - H. Hale, 94; **Charles Lembach** - Tom O'Rourke, 90; **William Kubitz** - H. Rockenbrock, 100, and **Lloyd Wood-Hans Ritchie**, 99.

A total of 68 teams took part in the event, the next edition of which is scheduled for Wednesday, Mar. 29.

KP Library Adds 6 Mystery Stories

Like mystery stories?

Six new "shockers" have been added to the KPAA lending library in Bldg. 28 and are available for your pleasure at the standard rental of 2 cents per day.

The new titles include "What a Body" by **Alan Greene**, "The Case of the Cautious Coquette" by **Erle Stanley Gardner**, "Inland Passage" by **George Harmon Cox**, "Trouble in Triplicate" by **Rex Stout**, "Cat of Many Tails" by **Ellery Queen**, and "Crooked House" by **Agatha Christie**.

Here Are KPAA Candidates



Louis Eilers . . . for president
George Patterson . . . first vice-president
James Culhane . . . first vice-president
Walter Nelson . . . first vice-president



George Gustaf . . . second vice-president
Charles McCracken . . . second vice-president
Audrey Klippel . . . recording secretary
Eleanor Hammill . . . recording secretary



Herbert Shaw . . . treasurer
Frances Molinari . . . for trustee
Jean Roesser . . . for trustee
Pat Sullivan . . . for trustee



Mount Norris . . . for trustee
John McEntee . . . for trustee
John Quistorf . . . for trustee
Ray Raufelsen . . . for trustee



James Scholes . . . for trustee
Audrey Herrick . . . for trustee
Eleanor Judson . . . for trustee
Melissa Mater . . . for trustee



Michael Corrigan . . . for trustee
Jim Gallagher . . . for trustee
Edwin Hart . . . for trustee
Robert Gell . . . for trustee

Backers' Buddies Prove 'Friends Indeed'

It's one thing to be down on your luck but quite another to ride out your difficulties on a tidal wave of friendship.

At least that's the way **Frank Backers** of the Testing Dept. looks at life.

Frank met his first reverse Jan. 31 when he was taken to St. Mary's Hospital suffering from a kidney ailment. On top of that, the stork was hovering over the household. To further complicate matters, Mrs. Backers' aunt was scheduled to arrive in New York from Holland for a visit of several months. Cer-

tainly major problems for a man and his family who themselves have been in the U. S. less than a year, fresh from the "land of the dikes."

But there is a happy sequel to this tale of woe. Frank's associates have made emergency plans to get Mrs. Backers to the hospital when necessary, taking care of the couple's 3½-year-old daughter in the interim. They also have arranged to meet Frank's aunt in New York City on her arrival and to escort her to Rochester.

All's well that ends well!

Big-Time Revue, Movies, Dinner Booked by Foremen's Club Mar. 14



Fun for Foremen—Two of the headliners in the big show slated for the meeting of the Foremen's Club Mar. 14 are shown here. At left is Guilli Guilli, a sleight-of-hand expert. The zany guys at right are the "Three Pitchmen." They perform a lot of novel stunts with miniature musical instruments.

H. P. Nelligan Elected Head, Smith Assistant at Peabody

Henry P. Nelligan has been elected president and general manager of Eastman Gelatine Corporation by the directors. He succeeds John P. Newbury, who died Feb. 2.

Gregory Smith was appointed assistant general manager.

Nelligan, an MIT graduate, joined the American Glue Company in 1915 as a chemist. He

was promoted successively to assistant superintendent and to superintendent of the plant at Peabody, Mass. He had been superintendent since 1930 when Kodak purchased the plant.

Smith, also an MIT grad, joined Kodak Park in 1931 as a chemist in the industrial lab. He transferred to the Gelatine Dept. a year later and in 1938 became assistant superintendent of the department. He was appointed assistant to the general manager of Eastman Gelatine in January 1949.

Veterans Retire From T-L Div.

TAPRELL LOOMIS DIV.—John Blyth and Art Hansen were honored at a dinner party recently on the occasion of their retirement Feb. 1. About 90 of their associates gathered at Como Inn for the party.

Following the after-dinner speeches, John and Art were presented with gifts from fellow Kodakers. Dancing rounded out the evening.

John started as a press feeder on Apr. 12, 1902, with the original Taprell Loomis & Co., which was taken over by Kodak on June 30 of that year. In 1904 he became foreman of the Box Dept. John was made foreman of the Finishing and Assembling Depts. in 1933.

Art started with Taprell Loomis Div. in 1929 and holds an enviable record for punctuality as night watchman.



'Congratulations, Herb!'—C. Herbert Holt, left, Dept. head of CW Industrial Relations, has just received congratulations from Craig P. Cochrane, director of Industrial Relations of EK. Holt was elected president of the Rochester Hospital Service Corp. He's the first industrial representative to be so honored.

An all-star revue of night-club entertainment will be presented by the Kodak Park Foremen's Club at its next soiree Tuesday, Mar. 14, in the Bldg. 28 auditorium. A dinner in the second floor cafeteria begins at 5 p.m.

A 20-minute program of movie shorts will be shown at 6:10 p.m. Don Cummings, comedy star of stage, radio and television, will be on hand to keep the performance moving at a fast pace. Cummings will introduce the following headline acts:

The Dancing Raymonds—A dancing pair which has had five appearances on Milton Berle's television show. Verna Raymond, a youngster who also appears in the act, is the youngest member of Jack Barry's "Juvenile Jury."

Lester Cole and the Debutantes—Cole conducts a quartette of attractive young singers in a program of popular and classical tunes. The group is currently featuring songs from the stage hit, "South Pacific."

Joe Rankin—Novelty xylophonist, generally recognized as one of the country's foremost exponents of this instrument.

The Impressionaires—A talented trio presenting impressions of favorite radio and movie stars including Clark Gable, Jimmy Durante, Bing Crosby, Frank Sinatra, Perry Como, the Ink Spots, Vaughn Monroe, Frankie Laine and many others.

Guilli Guilli—An audience participation show made up of an unlimited assortment of novel tricks.

Three Pitchmen—Recently seen in Rochester at the Firemen's Benefit Show, this act features three young men who perform novel musical stunts with miniature instruments.



Some Safety Record!—E. L. (Ted) Cook, left, Yard Dept. superintendent at Kodak Park, presents safe driving pins to William Kingston, Fred W. Musclove and Otto R. Neubeiser, l. to r. Each has been driving since 1926 without a reportable accident or one in which he was held responsible. Pins also went to 115 other drivers with varying safety records.

Pins Awarded to 117 Drivers Of Kodak Park at Dinner

Safety records of 118 Kodak Park drivers, some of them dating back 24 years, were recognized at a recent dinner at KP.

City officials and Company representatives were among those who gathered to honor the drivers of the Park's vehicles. And wives of the honored men were guests.

E. L. Cook, superintendent of the Yard Dept. at KP, presented a special pin to each of the men in recognition of his record. Tops in the group were four drivers who have driven KP vehicles since 1926 with no reportable accidents or accidents in which they were held responsible. They are William Kingston, Harry Marshall, Fred W. Musclove and Otto R. Neubeiser. Records of other drivers range down to three years.

David B. Brady, Rochester commissioner of public safety, was the principal speaker at this third annual dinner for the drivers. He lauded their accomplishments and urged that they continue their excellent records for safety. Phillip C. Wolz, assistant superintendent of Industrial Relations at KP, was master of ceremonies. He introduced Commissioner Brady and other guests to the more than 300 diners.

Among the guests were Donald McMaster, EK vice-president; Gerould T. Lane, assistant manager of KP; Elmer K. Smith, president of the Rochester Safety Council; Edwin F. Smith, Council director, and Inspector George V. Heisel and Capt. Albert O. Daniels of the Rochester Police Dept.

John A. Quistorf, assistant superintendent of the Yard Dept., was in charge of arrangements.

Kite-Sail Carries H-E Man Skimming Bay Ice on Skates

Traveling at a pace of 45 to 50 miles an hour is not much of an accomplishment in this day and age of supersonic speeds. Norm Rosenburgh puts distance behind him at that rate, though,

with nothing more than a pair of ice skates and a sail to propel him. Norm, who is in Recordak Engineering, is as much at home on ice as he is on "good old terra firma." He began ice skating at the age of 4. At 6, his father, who was a professional hockey player in his youth, taught him the art of ice sailing. And he has been at it ever since.

Makes Own Sail

Weekends during the winter, weather permitting, find him either on Braddocks or Irondequoit Bay, zooming across the ice under full sail. Norm made his own sail. Consisting of two bamboo poles and a stretch of canvas, it is 14

feet high and shaped like a kite. In action, he positions the sail behind his back, holding onto the vertical extension with his left hand and the horizontal pole with his right. To stop, he merely lifts the sail over his head or turns directly into the wind.

"I've taken a lot of spills," says Norm, "but it is a great sport for a real thrill."

A Patient Fellow

All things come to him who waits... just ask Hector Martin, Woodland, Calif., photographer, who has been waiting 13 years.

Martin sold some negatives to Kodak back in 1936. Since then he has waited for one of them to be put to use.

Recently the Company used one in one of its publications... Martin had not waited in vain!

Zari's Our Hero For Effort at Zero

Dr. Manuel O. Zariquiey thought he was quite a hero the other morning—for a little while anyway. With the temperature outside at zero, Zariquiey was awakened at 6 a.m. by his gas furnace which was emitting terrific noises and rumbles.

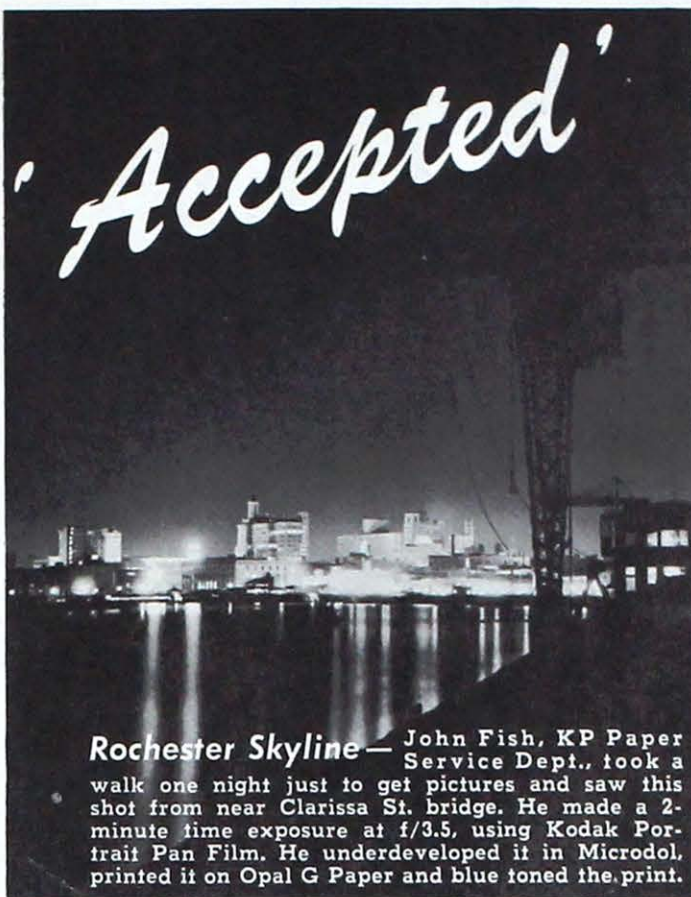
Fearing it would explode any second, Zariquiey, barefoot and clad only in pajamas, dashed outdoors to turn off the gas supply valve.

Almost frozen, Zari, who is a member of the KO Export Dept.'s Medical Sec., hurried back into the house and phoned the gas company.

A serviceman soon arrived to allay Zari's fears. He declared: "No, despite the noises the furnace wouldn't have exploded. And you needn't have rushed outside in the cold to turn the valve. There's a valve right here in your basement for your convenience."



Ice Sailor—Here's Norm Rosenburgh of Recordak Engineering at Hawk-Eye with his sail that sends him skimming over the ice. He hits speeds of 45 to 50 miles an hour. There are lots of spills, but plenty of thrills, according to Norm.



Rochester Skyline— John Fish, KP Paper Service Dept., took a walk one night just to get pictures and saw this shot from near Clarissa St. bridge. He made a 2-minute time exposure at f/3.5, using Kodak Portrait Pan Film. He underdeveloped it in Microdol, printed it on Opal G Paper and blue toned the print.

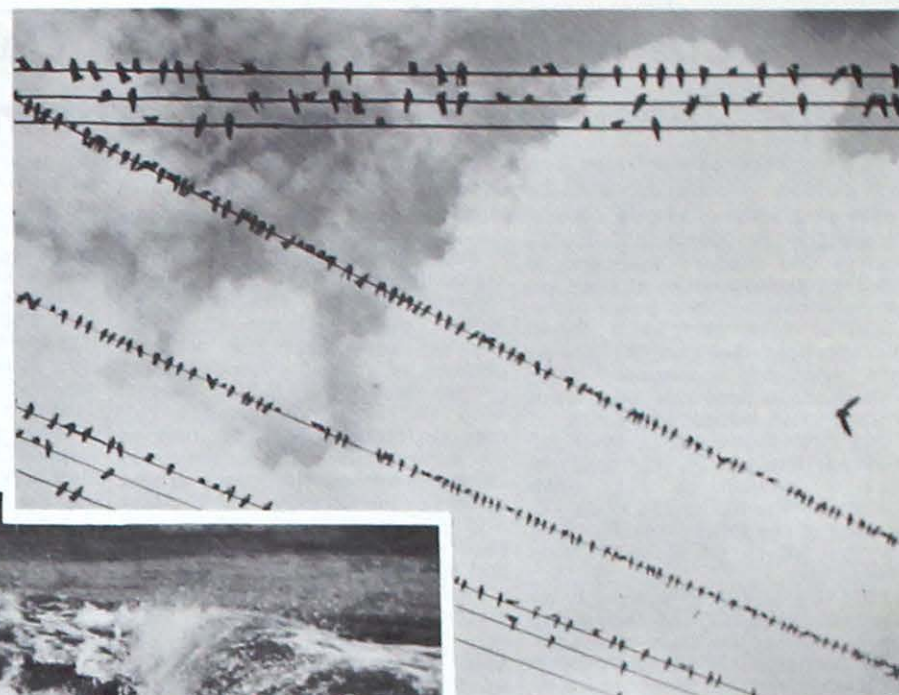
The 14th Rochester International Salon of Photography opens tomorrow at the Memorial Art Gallery.

From the 1250 prints and 1450 transparencies submitted by 538 photographers in 21 countries, the judges selected 300 prints and 330 slides.

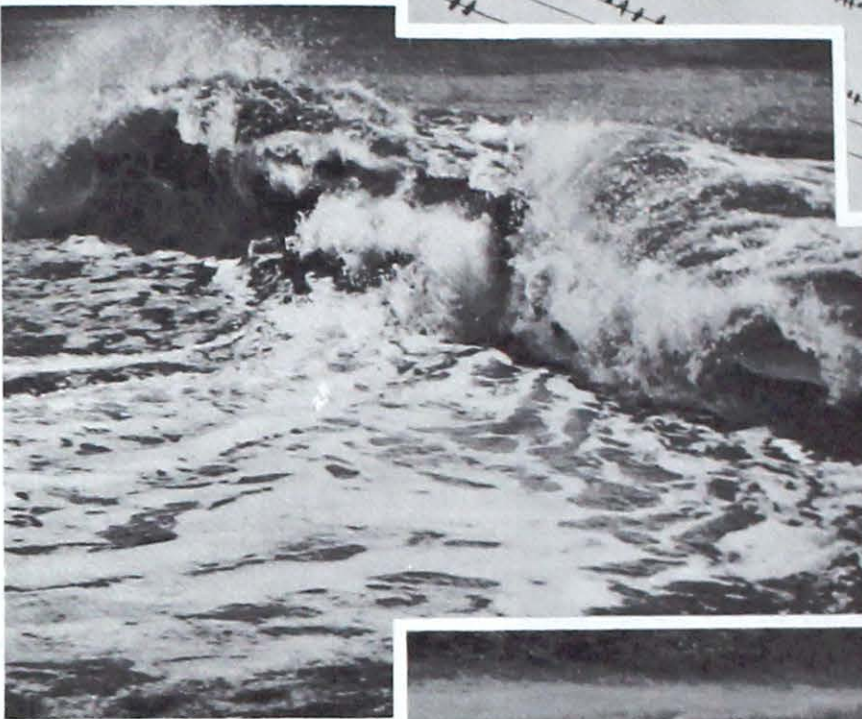
Following tomorrow's opening, the salon, sponsored by Rochester camera clubs and photographic industries, will continue through Apr. 2.

Transparencies will be projected in the Gallery's theater Mar. 5, 8, 12, 15 and 19.

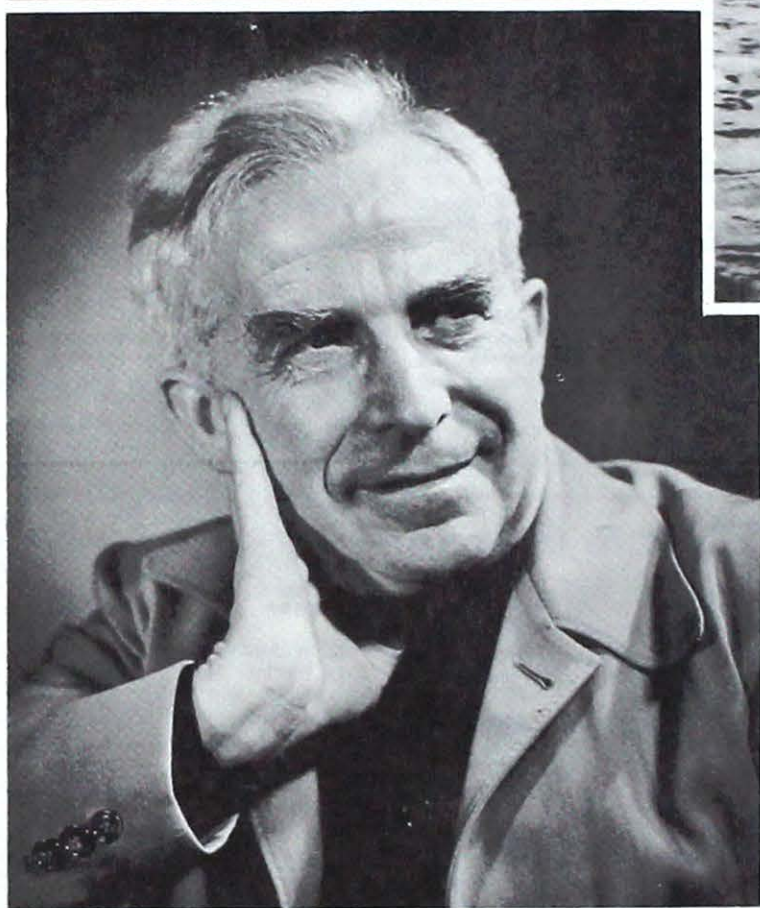
Some black-and-white prints made by EKers and hanging in the salon make up this page.



Symphony— Charles W. Fairbanks, KP Paper Service Dept., shows what may be done with telephone wires, birds and clouds. He used a K2 Filter to separate clouds from sky.



Breaking Wave— Joseph B. Hale, KP Manufacturing Experiments, stopped this wave on the south shore of Nantucket Island. His Kodak Medalist was set for 1/50th of a second at f/16.



Uncle Dan— When Charles Edens, KP Research Lab, met the father of his associate Daan Swick, he immediately wanted him to model.

Lazy River— Curving in an S and with its old dory, this Maine river attracted Lowell Miller, KO Govt. Sales. A foggy day caused the flat lighting and soft effect.



Winter Sunset— Driving in the country, W. Arthur Young, H-E Superintendent's Office, spotted this landscape on Ayrault Rd. in Perinton. He borrowed a friend's camera, shooed a curious horse out of the way, and took the picture. The sun sank about two minutes after this was exposed.



Winter Wonderland— Richard Harold, H-E Dept. 35, was led outside by the beauty of iced trees and came upon this driveway scene on Clinton Ave. S. near Highland Ave. He gave it an 8-minute exposure at f/11.

Sentinel— Lawrence Spaven, CW Dept. 78, took advantage of the sun's proximity to the horizon between 5 and 6 p.m. to get this picture at Portland Head Light in Maine.



Betty Tags Kodak Salesmen and Dealers, Keeps Them on 'Course' in Training Center

If you were to visit the Sales Training Center, no doubt the first person you'd see would be attractive Betty Donohoe, who'd greet you with a "hello" and friendly smile. This has been the

experience of numerous Kodak dealers and dealers' salesmen. A different group arrives at the Center approximately every two weeks to take part in a Retail Photographic Salesmen's Conference designed to acquaint them with Kodak products and basic photographic selling principles.

Over 500, representing 45 states, have participated in this program since it opened in July 1948. Everyone who visits 285 State St., location of the Sales Training Center, just south of Kodak Office, meets Betty.

Yes, she is the girl who helps make sure that all 25 of each group are introduced to each other, receive the helpful identification tags she has lettered for them and generally are made to feel at home.

Besides playing the role of receptionist, Betty is secretary to Howard Kalbfus, director of the Sales Training Center. As such, she is responsible for a large amount of correspondence, which ranges from the initial contact with the dealer concerning this special training program to making the arrangements for hotels, traveling accommodations and proper clothing for Rochester's climate. She also sends home excess baggage and writes letters of thanks and appreciation to both those who attended and their management.

Once they're here, she takes care of most of their personal needs or whims, as the case may be. She's obtained tickets to basketball games, rented a typewrit-

er, and even was requested to write to one dealer's wife to inform her that he had arrived safely.

She rented a room in a private home for a man who wanted to extend his visit to a month. She advises the group members where to shop and where to eat. She obtains transportation for them. As her boss puts it, "To them, Betty personifies the spirit of the Sales Training Center and Kodak."

Many of the out-of-towners are women . . . either regular group members or wives of those attending. For them, she is a hostess, occasionally taking them to lunch and dinner.

Obtains Transportation

If there's a goodly number, she enlists Kodak Office friends to help her entertain. The friends usually are secretaries to men in the KO Sales Dept. who take an active part in the training sessions. Another important task is arranging proper transportation for the plant trips and visit to Eastman House.

One of the big events of the visitors' stay is a Saturday trip to Niagara Falls. Here again, Betty arranges transportation. She makes out the customs papers for equipment, which are necessary in order to get in and out of Canada conveniently. She has been on several of these trips herself.

Another big event is the final dinner. That's when the students put on comedy acts and invariably present Teacher Kalbfus with a humorous gift . . . like a live guinea pig, an all-too-real duck or set of toy teeth that chatter when wound.

Helps Find Props

Betty assists in getting the props when necessary. Once, however, the tables were turned. She was given a homely cowbell to use instead of the euphonious chimes she usually sets ringing at the end of each class session.

With the final dinner, a full 10 days end for both her and out-of-towners. But already the Sales Training girl has started the ball rolling for the next class. Yes, Betty Donohoe has an interesting job, and she'll go along with that statement by declaring, "There's always something new coming up. It seems as though anything can happen here."

Prior to taking over this job of receptionist-secretary-hostess, she was a member of Territorial Management in the KO Sales Dept. A sister, Marguerite Donohoe, and brother, Tom, are at Kodak Park.

Being within earshot of many of the lectures that transpire in the Training Center, she has picked up, in between typing and phone calls, more know-how about photography and its equipment. "Well, anyway, I've been 'educated' to more than a box camera," she laughs.

Suited for Easter

It's a pin check worsted wool that Marge Murphy, KO Telephone Office, is modeling. And her hat of Swiss milan straw is set off by a saucy red rose and velvet trim. Note standup Peter Pan collar, double-flapped pockets and cuffed sleeves of this McCurdy's suit. It would be chic for "the Easter Parade."



Meeting the 'Students'—Betty Donohoe, at right, greets two students at the Sales Training Center and presents them with name tags which will help them get acquainted with other members of the class. They are Rudy Rubin Jr. and his wife, Bernice, of Midland, Tex.

Snared . . . Paired . . . Heired

Engagements . . .

KODAK PARK

Arlis Fallon to Richard Buckingham, TEC Research Lab. . . Beverly Ingersoll, Sheet Film Packing, to Fred Roos, Engineering. . . Agnes Fromm, X-ray Sheet Film, to Robert Bauer. . . Betty Dunn, Medical, to David Perry, E&M.

CAMERA WORKS

Florence Hauck, Dept. 48, to Elmer Metzler, Dept. 66.

KODAK OFFICE

Lois Sharp, Credit, to Raymond Diringer. . . Marjorie Hull, Camera Club & School Service, to Tom Hefferin, Photographic Illustrations Div.

Marriages . . .

KODAK PARK

Shirley Phillips, X-ray Sheet Film, to Arthur Tarricone. . . Emily Cook, X-ray Sheet Film, to Harold Snyder. . . Margaret Preissing, Film Proc., to Russell Thayer, Process Control. . . Cathryn Mikolako, Paper Finishing, to Deane Butler. . . Dorothy Baumer, Paper Finishing, to Jack Kleisley, KO. . . Thelma Done, Paper Finishing, to Glenn Post. . . Jean Gaenzler to Rowland Carroll, Testing.

CAMERA WORKS

Jean Schafer to George McVeigh, Dept. 6, NOD.

HAWK-EYE

Edna Parno to Peter Michaels, Eye Dept.

KODAK OFFICE

Dorothy Baumer, KP, to Jack Kleisley, Repair Factory.

Births . . .

KODAK PARK

Mr. and Mrs. Frederick Bixby, daughter. . . Mr. and Mrs. Charles Knope, daughter. . . Mr. and Mrs. Ronald Vogt, daughter. . . Mr. and Mrs. Fred Seidel, twin daughters. . . Mr. and Mrs. Robert Long, son. . . Mr. and Mrs. Melvin Kofahl, son. . . Mr. and Mrs. Glady Hood, son. . . Mr. and Mrs. James Robinson, son. . . Mr. and Mrs. Richard Millham, son.

CAMERA WORKS

Mr. and Mrs. Robert Lichtwart, daughter.

HAWK-EYE

Mr. and Mrs. Richard Schulz, daughter. . . Mr. and Mrs. Henry Weezorak, daughter.

KODAK OFFICE

Mr. and Mrs. Don Lewis, son. . . Mr. and Mrs. Robert Maher, son. . . Mr. and Mrs. John VandenBrul, daughter. . . Mr. and Mrs. Kenneth Jamieson, son. . . Mr. and Mrs. Kenneth Mason, son.

DPI

Mr. and Mrs. Gordon Allardice, son.

BENEFITS OF GOOD BREAKFASTS



MORE ENERGY—
ability to do more work



FASTER REACTION—
ability to think and act more quickly



LESS TREMOR—
steadier with less muscular fatigue

A campaign now is in full swing, and will be for several months, to promote better breakfasts. It's sponsored by the Monroe County Nutrition Committee, which states that the morning meal should supply one-third of the daily food needs. Best of all, a good breakfast is non-fattening. The body is low in energy in the morning. Scientists confirm that calories eaten at an average breakfast are consumed by lunch time. Recent scientific tests prove that a good breakfast results in more work done, speedier reactions in making and carrying out decisions, greater mental alertness and less fatigue before lunch. Write to Wintress Murray, 343 State St., for free pamphlet on breakfasts.

About the Model

The Murphy family has three of its members at Kodak, and one of them is pretty Marge Murphy who models the fashion above. The other two are her father, Thomas, of Camera Works and sister, Helen Murphy, DPI.

Marge is a member of KO's Telephone Office, but is familiar to those passing KO's main reception desk, where she occasionally subs. Her hobby is collecting cups and saucers. She started it in Canada a couple of years ago and now has a pretty collection of 12. She's engaged to John Sullivan, RIT student.

4 EKers to Guide Museum Visitors

Four Kodak women will play an active part in a program at 8:15 p.m. next Wednesday at the Rochester Museum of Arts and Sciences. They are Isabel Schmitt and Margaret Wilson, both of KP Research Lab; Gladys Welch, KO Executive Offices, and Mildred Manhold, CW Dept. 63.

Acting as volunteer guides of the Women's Advisory Council, these Kodakers will point out interesting features of exhibits on Iroquois Indians to groups of visitors. "As a volunteer guide, you learn a good deal about the history and makeup of Rochester and vicinity," said Isabel, who is guide chairman.

Bread Query Answered by EK Dietitian

A question about bread caught Wintress D. Murray, EK nutrition adviser, right on guard. She not only had profound thoughts about the subject, but also had a fine recipe on hand.

Is enriched white bread more nutritious than home-made white bread?

In New York State, there is a law which requires that all white bread offered for sale, and most

kinds of white flour, be enriched. Many bakers also add milk solids (dry milk) and soya flour when making white bread. This adds calcium and good quality protein. If the homemade bread contains these same ingredients, it will be as nutritious.

Dr. Clive McCay, Cornell Research professor, recommends the following recipe for "a better staff of life".

HOMEMADE BREAD

2½ c. unbleached flour (with 2% wheat germ)
1 c. water
1½ t. salt
2 t. sugar
2 t. shortening
3 T. soy flour
3½ T. non-fat dry milk solids
½ cake yeast (½ ounce)

Method: Dissolve yeast in one cup of lukewarm, not hot, water (about 85°). Combine all dry ingredients in mixing bowl. Pour in the yeast solution and start mixing. Add shortening and mix until the dough is smooth. Place the dough in a well-greased bowl, cover and allow to rise in warm place (80 to 85°F.) for 1½ hours. Punch dough down by plunging the fist in center of the dough. Fold over edges of dough and turn upside down. Cover and allow to rise for 15 to 20 minutes. Shape into a loaf and place in greased 9x4x3-inch bread pan and cover. Allow to stand in warm place until it fills the pan . . . about 55 to 65 minutes. Bake about 35 minutes in 400°F. oven.

"I have tried this bread and recommend it to you as a fine loaf which will give your family a bonus in nutrition," said the nutrition adviser. "It is available at two local stores, and a committee of housewives is now trying to interest other bakers in offering it for sale because of its high food value. In the meantime, why not try it yourself?"

The Market Place

AUTOMOBILES FOR SALE

Chevrolet, 1947, tudor, 2-tone blue. 47 Roser St.
 Ford, 1948, 2-door, sedan, \$1025. Mon. 8483-W after 6 p.m.
 Nash, 1948, "600", 4-door sedan. Cul. 5001-W.
 Plymouth, 1936, coach, \$35. LOcust 8545, 13 1/2 Eagle St.
 Oldsmobile, 1936, "6", rebuilt motor, \$100. Cul. 6985-M.
 Studebaker, 1940 Commander. Cul. 4093-W.

FOR SALE

AQUARIUM — Stainless steel, 50-gal. Also plants; fish; heaters; thermostat; air compressor. Roy Gebhard, 17 Oneida St.
 BATHINETTE — Aluminum, full size, \$11. Glen. 1059-M.
 BED — Single, 4-poster, mahogany, complete. Glen. 4367-J.
 BEDSPREADS — Twin, rose color. Also 30 gal. galvanized water tank, copper coil; 11 kitchen cabinet doors. Char. 2612-J before 6 p.m.
 BOAT — Car-top, 11 ft., weighs 87 lbs., \$85. Char. 0490-J.
 BOAT — 9 1/2-ft. car top. Will trade for 5 h.p. motor. Albion 1061-R reverse.
 BOAT — 14-ft. Thompson, 10 h.p. Super Mercury, 1949. Albion No. 9, reverse.
 BONNET AND COAT SETS — Twin girls', pink flannel, size 2. Also hot feeding plates, child's harness. Glen. 7256-M.
 BOOKCASE — Four-section. Also walnut davenport, matching chair; table model, combination Motorola radio, remote control. Glen. 7066-W after 10 a.m.
 CAMERA — Leica III-C, Leica Flash VIII, Weston Master II light meter, tripod, filters, sunshade, Pola screen, Kodak Bantam enlarger, photo floods and dark room equipment and other photo accessories, \$500. Baker 7400.
 CAMERA — Recomar, No. 33, 1/4.5 coupled range finder, carrying case, synchronized flash attachment. Cul. 2109-W.
 CLARINET — Conn, late model B flat. LOcust 3149.
 CLOTHING — Boy's gabardine jacket, size 7 years; short jacket, brown and tan, size 10; 4 jerseys, brown and white navy and white trim; 4 wool sweaters, size 10 years; rain coat, size 12 years. Glen. 5264-W.
 CLOTHING — Two spring coats, blue, green, size 12; winter coat, red, size 12; teal snow suit, size 10; printed, quilted robe, size 10. Also pair white ice-skates. Glen. 1919-W.
 CLOTHING — Black, shortie, spring coat, size 14; tan, silk gabardine raincoat, size 12; grey gabardine spring suit, size 14; black, aqua wool dresses, petite 14. Glen. 2360-M.
 COAT — Boy's, with leggings, Eton cap set, brown, size 4, \$12. Also grey flannel Eton suit size 4, \$3, dry cleaned. Mon. 8930.
 COAT — Lady's black broadcloth, belted, size 16 tall. Glen. 3983-W.
 COAT — Lady's, winter, size 12-13, matching hat, \$20. Char. 3405-R.
 COATS — Winter, black, fitted style, size 14; light-colored box style, size 16. Glen. 1136-J.
 COATS — Girl's navy wool, spring, dry cleaned, size 7-8, \$4; red winter, size 8, \$4. Char. 1319-R.
 CRIB — Child's. Mon. 0642-W.
 CRIB — Blond maple. 359 French Rd.
 CRIB — Large, maple, with matching combination chest - wardrobe. Glen. 4038-J.
 CURTAINS — Three pair marquisette, 54"x86"; 2 pr. Koroseal plastic, blue figured, 50"x60"; cottage set, white and red, \$10. Mon. 8483-W after 6 p.m.
 DINETTE SET — Oak, table with extension leaf, 6 chairs, pad, \$30. 371 North Ave., Glen. 6129-J.
 DINING ROOM SET — Nine-piece. Glen. 5372-R.
 DINING ROOM SUITE — Three-piece, maple. Also Martha Washington sewing cabinet. Char. 3192-W.

FOR SALE

DINING ROOM SUITE — Walnut, 8 pieces. Also 2 rugs. Glen. 5855-R.
 DINING ROOM SUITE — Walnut, 9 pieces. Glen. 6718-M.
 DOOR — Combination storm and screen, 80"x36", with hinges, \$7. Mon. 5037-R.
 DRAPES — Two pair. Glen. 5264-W.
 DRESS — Flower girl, light green taffeta, dark green velvet trim, size 3. Char. 1027-R.
 ELECTRIC RANGE — Westinghouse, automatic, deepwell, \$50. Char. 3887.
 END TABLES — Coffee table. Also radio and record player; records and record stand. 478 Winona Blvd, evenings or Sundays.
 FIREPLACE — Rock-built, 1-piece, gumwood mantle, bookcases with leaded glass doors, gas log, andirons. 321 Bernice St., Glen. 5179-W.
 FIREPLACE — Also rolltop desk, 3-band console radio or will swap for portable typewriter or steel filing cabinet. 793 Ave. D after 6 p.m.
 FURNITURE — Also television set. Glen. 7044-M.
 FURNITURE — Living room, dining room, kitchen. Also boy's full-size bicycle. Glen. 5658-J.
 GARDEN AID — Allis Chalmers, 3/4 h.p. Briggs & Stratton motor, cultivator, snowplow attachments, \$185. 33 Parkside Cres., Char. 2623-J.
 GAS RANGE — Magic Chef. Char. 0858-W.
 GAS STOVE — Four burners, side oven, \$10. Glen. 6220-R.
 GOWN — Bridesmaid with mitts and headpiece, mint green satin, size 13, \$20. 1071 Lake Rd., Webster.
 HEATER — Sidearm, 30-gal. tank, \$10. Char. 0813-M.
 HOT WATER TANK — 30 gal. Also side arm heater, \$5. Cul. 4206-R.
 HOUSE COAT — Blue and white, rayon, size 32. Char. 3285-J.
 HOUSE TRAILER — Folding, \$130. Also under carriage for boat or box trailer, \$12; Aladdin kerosene lamp; carrier for top of car, \$5; 3 single beds, complete. 12 Bartlett St.
 KODASCOPE — Model 20, 8mm. 150-watt, \$15. Mon. 4860-W.
 LAMPS — Table, 2. Also tier table; blond maple crib with chifferobe; 7 storm windows; 27 screens; rayon satin bedspread; 3 pairs drapes; 2 fireside chairs. 89 Nye Pk., Glen. 5096-J.
 LIGHT FIXTURE — Living or dining room. Also 2-pc. living room suite, end tables, coffee table. Glen. 6874-R.
 LIVING ROOM CHAIRS — Two, reupholstered, slipcovers. 155 Wisconsin St.
 LOT — 120x325, 1.8 miles south of Fairport on Mosley Rd., water and electric installed. Cul. 3871-W.
 LOT — Pittsford, 100' frontage, 2 1/4 acres, highly restricted. Mon. 3202-W.
 MOTOR BIKE — 1947 Schwinn, Whizzer, motor, \$95. 74 Atwell St., Char. 0266-R.
 OUTBOARD MOTOR — 1949 deluxe, 5 h.p., Champion, 2061 Dewey Ave., Glen. 3983-W.
 PHONOGRAPH — Portable, electric, up-to-date classical records included if desired. 50 Pardee St.
 PLATFORM ROCKER — Char. 2297-J.
 RADIO — Zenith Trans-oceanic, portable, 8-tube, superheterodyne, \$75. Also skis, poles, boots, size 11, \$20; set of golf clubs, 3 Walter Hagen woods, seven Aristo irons, canvas bag, 10 balls, \$45; or will swap for 22 Hornet or 25-20 rifle. 1636 Parma-Hilton Rd.
 RADIO - PHONOGRAPH COMBINATION — Philco, floor model. Cul. 5427-W.
 RANGE — 1 Bengal bungalow coal and gas. Also 1 boy's finger tip coat, 10 yr. old size; 2 storm sash 2'4"x7'4". And 1 door 4'6"x7'4". Glen. 5306-M.
 RANGE — Kalamazoo, combination gas and coal or oil, \$25. 28 Burrows St., Glen. 1729-W.
 RECORD ALBUMS — One of Marches and one of Ben Yost Singers, \$1 each. 731 Flower City Pk., Glen. 5500-R.
 REFRIGERATOR — Leonard, apartment size, \$30. Also 2 kitchen lighting fixtures. Cul. 2840-W after 6 p.m.

FOR SALE

REFRIGERATOR — 1948, Kelvinator, 10 1/2 cu. ft., Mon. 8204-J.
 REFRIGERATOR — Leonard, 6 cu. ft., \$25. Also man's tubular ice skates, size 11; woman's tubular ice skates, size 5, \$5 pair. Cul. 3785-R.
 REFRIGERATOR — Philco 1949, Model 883, 8.1 cu. ft., 52 pounds frozen food space, \$210. 556 Averill Ave. evenings, Char. 0570-M anytime.
 RIFLE — 30-40 Krag, Redfield rear sight, sling, \$50. Glen. 8161-R.
 ROOFING TILE — Will sell small amounts. 69 Electric Ave., Glen. 1635-W.
 RUG — Wilton, 9'x15', 42 Bonesteel St.
 RUGS — Wilton, figured, 9'x12', Ozite pad; 3'x5' scatter rug, \$48; plain rose, 8'8"x6'6", \$15. Also breakfast set, \$23; table lamp, \$7.50; Junior bridge lamp, \$5; metal bed, complete, \$15. Glen. 0231-J.
 SADDLE — English, \$45. 1647 Creek St., W. Penfield; E. Rochester 492-F-22.
 SAXOPHONE — Conn E flat alto, make offer. Glen. 6483-R.
 SHOES — Lady's, black calf pumps, Airstep, cuban heel, size 6 1/2 AAA. KP Ext. 7280.
 SIDE ARM HEATER — With tank complete with fittings. Char. 2988-M.
 STOVE — Andes, combination oil and gas, white enamel. Glen. 1716-J.
 STOVE — Chambers, gas. 332 Sheldford Rd., Cul. 2433-W.
 STOVE — Florence combination oil and gas, make offer. 373 Fernwood, Hamlin 5421.
 STOVE — Small gas range. 21 Arnett Blvd., Glen. 1854-J.
 STUDIO COUCH — Recovered, matching drapes. 55 Ridgeway Ave. after 6 p.m.
 SUITS — Man's, brown and blue, size 42 regular, extra trousers, reasonable. Glen. 5855-R.
 TIRES — Set of 4 B. F. Goodrich, 6.70x15, tubes, extra low pressure. Glen. 4227 evenings.
 TRAILER — 1947 Sparton, 25 ft., fully equipped. Char. 1809-W.
 TWIN CARRIAGE — Whitney Steer-O-Matic. 583 Tremont St.
 UNIFORMS — White, short and long sleeves, size 14, \$2 each. Glen. 2360-M.
 VACUUM CLEANER — Hoover, Baker 6239.
 VALET PACK — Holds 3 suits, compartment for soiled laundry and shoes. Cul. 2124-W.
 WASHER — Blackstone, wringer type, \$55. Also bathinette, \$6; carriage, \$25; Taylor-Tot, \$5; 21-jewel, Rollex oyster perpetual wristwatch, Swiss, waterproof, chronometer movement, \$75. 439 Portland Ave., rear door.
 WASHING MACHINE — Char. 0161-M.
 WASHING MACHINE — Glen. 5855-R.
 WASHING MACHINE — Barton, Cul. 1028-R.
 WASHING MACHINE — Hot point G. E., with pump. Char. 1218-W after 5 p.m.
 WASHING MACHINE — Easy, \$10. Also Premier vacuum cleaner, \$5; room heater for wood or coal, \$10 or will trade for cross-cut saw, bench vise. Char. 2980-W.
 WASHING MACHINE — 1942 Thor. Also 30-gallon automatic gas water heater; tire chains 6.50x16. And side arm heater with tank and Sav-U-Time. Hill. 3252-R.
 WASHING MACHINE — ABC, new motor, new wringer rolls, \$15. Glen. 6835-R.
 WASHING MACHINE — ABC, pump, \$20. Also large crib, complete, \$12. 10 Benedict Dr., Glen. 5107-R.
 WOODWORKING LATHE — Glen. 3452-W.

HOUSES FOR SALE

HOUSE — 6 rooms, 3 bedrooms, immediate possession, near KP, shopping center. 125 Parkdale Terr. Glen. 4924-W after 6 p.m.
 HOUSE — Six room with attached garage and enclosed yard. Call evenings or Sundays at 478 Winona Blvd.
 HOUSE — Six rooms and garage, new siding roof, venetian blinds, automatic hot water heater, walking distance to Bond's factory. Cul. 4434-W.
 HOUSE — Story and half, 2 bedrooms, expansion attic, breezeway to garage, automatic oil heat-hot water, city bus at door, near school and stores. 965 Britton Rd., Char. 1826-J.

WANTED

BABY'S PLAYPEN — Char. 2767-M.
 BUILDING LOT — In Greece, suitable for bungalow. Glen. 1985-M.
 CAMERA — Kodak "35", range finder, Spencerport 356-L.
 CHILD CARE — By hour or day in home. 6 Roosevelt St., Mon. 7310-J.
 COATS — Girl's spring size 12; boys spring size 7-8. Char. 1319-R.
 CRIB — Drop-side, complete, \$10. Hilton 4288.
 HOUSE — Six rooms in northeast section, price about \$6500, cash. LOcust 9772.
 HOUSE — U-shaped, with the U curve facing back of lot, house facing north if possible. R. M. Wright, Glen. 1024-M.
 MAPLE TWIN BEDS — Hamlin. 2556.
 ORGAN — Hammond, Home Model E. Write Harrison Winters, Box 3132, City or Glen. 5939-R.
 PLAY PEN — Baby's. Also bowling ball, 3-finger grip. C. Knope, Hamlin 7126.
 PONTIAC — 1941 or 1942, sedanette or sedan. Glen. 5979-J after 5 p.m.
 PUPPY — Female Beagle, reasonable, no papers required. CW KODAKERY 6256-334.
 RIDE — From Monroe Ave. and Glen Ellyn Way to KP and return. 8-5 p.m. KP Ext. 2195.

WANTED

RIDE — Or exchange driver from Mendon vicinity to Bldg. 65, KP and return. 8-5 p.m. Howard Ott, Strong Rd., Victor 162-F-21.
 RIDE — From Waring and Culver Rds. to KP and return. 8-5 p.m. J. Walker, Cul. 1028-R.
 RIDE — To and from E. Main near Durham to H-E, hours 8-5. H-E Ext. 629. Nora Ehrhardt.
 RIDERS — From Scottsville Rd., Chili, Genesee St., Bulls Head bypassing KO and CW to KP and return. E. Mosholder, Glen. 5562-J.
 RIDERS — From Renouf Heights, Chili, Blvd. areas to KP and return. 8-5 p.m. Glen. 8270-W.
 ROLLER SKATES — Girl's, size 5 1/2, reasonable. Glen. 7071.
 SEWING MACHINE — Electric, Also automatic washing machine. Glen. 5613-W evenings.
 VIOLIN BOW — Wood. Also 2 tires, 6.50 x15. Mon. 1339-R.

APARTMENTS WANTED TO RENT

Four unfurnished rooms by employed couple. Glen. 8629-R after 6 p.m.
 Or 5-room house by 3 adults, Kodak or Greece section. Glen. 6834-R.
 Three rooms, unfurnished, by responsible, employed, couple, prefer KP vicinity or suburbs, Apr. 1 occupancy. Hamlin. 3452 evenings.
 Three rooms, furnished or partly furnished, by Mar. 15, by employed couple. Char. 2157-J.
 Two or three rooms with private bath by employed couple on or about Mar. 15, all utilities included, \$50 or \$60. Glen. 3160-J.
 Four rooms unfurnished, three employed adults. K. Koppler, 275 Park Ave. after 6 p.m.
 Unfurnished, 4-5 rooms, reasonable. CW KODAKERY 6256-334.

FOR RENT

APARTMENT — Studio, kitchenette, bedroom, private bath, garage, handy to all Kodak plants. Glen. 6483-R.
 APARTMENT — Three rooms, unfurnished, bath, sunporch upstairs, gas and electricity furnished, near busline. 183 Champlain St.
 APARTMENT — Two rooms, kitchen, bedroom, large clothes closet, new stove, private entrance, porch, all utilities, \$65 per month. 50 Edgerton St., Mon. 4778-M.
 APARTMENT — Woman will share with middle-aged woman, near H-E. 101 Roth St., LOcust 5027.
 BEDROOM — Large, nicely furnished, for 1-2 business people, near buses. Cul. 4928-W.
 COTTAGES — St. Lawrence River, Chipewa Bay, boats, motors, week or weekends, \$25, \$30. 12 Bartlett St.
 GARAGE — 72 Avis St. Glen. 1973-R after 5 p.m.
 ROOM — Attractive, all utilities. 69 Electric Ave., Glen. 1635-W.
 ROOM — Gentleman preferred. Cul. 5086-W after 4 p.m.
 ROOM — In return for baby sitting 3 evenings a week, very light housework for refined working girl, references exchanged. 124 Flower City Pk.
 ROOM — For young man, convenient to H-E or KP. 145 Saranac St., Glen. 1125.
 ROOM — Front, use of phone. 13 Fairview Heights, Glen. 6963-J.
 ROOM — Furnished, double, front, twin Hollywood beds, private semi-bath. 103 Albemarle St., Glen. 1700-M.
 ROOM — Gentlemen preferred or employed couple, some kitchen privileges if desired. 168 Ave. E.
 ROOM — Pleasant, gentleman, 5 minutes to KP. 48 Ridgeway Ave., Glen. 0843-R.
 ROOM — Studio with kitchenette. Glen. 6830-J.

FOR RENT

ROOM — Studio, large, \$8 per week, \$10 for 2. 596 Monroe Ave., Mon. 7639, after 6 p.m.
 ROOM — Use of home, for reliable, young man, some meals if desired, garage available, Titus Ave. Cul. 5336-J.
 ROOM — Furnished; woman only, student or employed, breakfast optional, privileges arranged. 1042 Monroe Ave., Mon. 5791-M.
 ROOMS — For man and wife, furnished, use of kitchen, \$10; single, for girl, kitchen privileges, \$5. 760 Harvard St., Mon. 2316-M.
 ROOMS — Furnished, single. Also rooms with 2 single beds, automatic hot water, \$5, garage, across from KP. 417 Maplewood Dr.
 ROOMS — One for man and wife, furnished, use of kitchen, \$10; single for girl, kitchen privileges, \$5. 760 Harvard St., Mon. 2316-M.
 ROOMS — Two single, gentlemen preferred, no cooking facilities, garage available, \$10-\$12 per week. Glen. 0728-R.
 ROOMS — Two bedrooms, near buses. 21 Arnett Blvd., Glen. 1854-J.
 SLEEPING ROOMS — Two, kitchen privileges if desired, walking distance to KP and H-E. 4 Fairview Heights.
 SPACE — Parking, for 16 cars, \$3 per month. 417 Maplewood Dr.
 COTTAGE — Canandaigua Lake, July, prefer West Side. Mon. 2199-J.
 COTTAGE — For 2 weeks in July or August, modern conveniences. Char. 0819-J.
 COTTAGE — For month of August. Baker 8998.
 COTTAGE — On the East Lake Road, Canandaigua or Conesus, modern facilities, minimum of two bedrooms, for the last two weeks in July, references. Glen. 2510-R.
 COTTAGE — West side Conesus Lake, by 4 couple for season. Scott Grover, Mon. 9372.
 GARAGE — Vicinity Dewey and Ravine Ave. Glen. 3004-R.
 GARAGE — Vicinity Strong and St. Paul St. Paprocki, 1809 St. Paul St.
 GARAGE — Vicinity of Saranac and Beach. Call Frank Comstock, Cul. 1019-J.
 HOUSE — Furnished, for three months, July, Aug., Sept., family of five adults. Eugene Dill, Char. 2194-W.
 HOUSE — Or lower or half-double, urgently needed by responsible couple with school girl, unfurnished, 2 bedrooms. Glen. 3983-W.

SWAP

CHEVROLET — 1937, For: Outboard motor. 25 Hartsdale Rd., Cul. 6026-W.
 ELECTRIC WASHER — Speed Queen. For: Porch glider or what-have-you. C. Lorz. Cul. 7246-W.

LOST AND FOUND

FOUND — Beige shorty string gloves, woman's, in KO Savings & Loan about Xmas time. KO Savings & Loan.
 LOST — Black knitting bag with blue sweater inside, on South Ave. bus. Mon. 6403-J.
 LOST — Book of verse, "Leaves of Grass", by Walt Whitman. Mrs. Char. Pope, 361 Sagamore Dr.
 LOST — Diamond ring, vicinity Driving Pk. and Dewey Ave., reward. Glen. 4848-J.
 LOST — Hamilton wrist watch, leather strap, cracked crystal, near E. Hanford Landing entrance. KP Ext. 2380.
 LOST — Ring, yellow-green gold amethyst stone. Reward. KO 4274.
 LOST — Set of indoor Kodacolor Prints in KP mail, William Paulson, Bldg. 205, KP Ext. 7269.

WHAT'S WRONG WITH THIS PICTURE?



H-E Bowling Champions



Cop Triples Test — Palmer Gaetano, Lucy Murray and Clarence McVea, pictured above from left, captured the HEAA Lucky Strike Mixed Threesome bowling tournament and top prize of \$45 with a 2496 total. Earlier in the season, Lucy shared top honors in the All-Kodak Threesome.



Dusty Finalists — The Camera Works basketball team pictured above won its semifinal test last week to advance to the finals along with KP in the Rochester Major Industrial League playoffs. From left, above, kneeling: Norm Robinson, CWRC athletic director; Howie (Hap) Chandler, Joe Gerew, Bill Maslanka and Paul Ratigan, coach; standing: Dick Spiegel, Chuck Arnold, Charlie Gray, Neale Tucker, John Coia. Absent when the picture was taken were George Mamo and Lloyd Anthony.

Sports Roundup

Keglers Eye Kodak Singles; Baryta Boys Enter Enmasse

Among the early entrants in the third annual All-Kodak Men's Singles Handicap were 30 members of the Baryta Bowling League. This is practically 100 per cent representation from this KP trick-

Winners Galore!

One out of every four entrants in the last men's All-Kodak Singles Handicap walked off with cash prizes! Kodak Park, with 336 participants, had 84 winners. Hawk-Eye keggers won 54 awards, Camera Works 29 and Kodak Office 10. Some 177 cash awards totaling \$1052.49 were distributed.

The Baryta bowlers will vie with other KP, CW, H-E, KO, DPI and NOD bowlers Mar. 18-19 at Webber's. Top award will be \$100 cash and the President's trophy. Deadline for entries is Mar. 14.

BITS ABOUT 'EM—The basketball season just ended marked the first time in 24 years that Sid Nichols did not cavort as a player. Instead, the one-time Hobart cage luminary confined his court activity to coaching the Kodak Office Dusters. . . . Misfortune marred the season's initial outing for Doug Harvey and Art Tyler, CW bobsled enthusiasts. Competing in the open-team event on the first day of racing on the Mt. Hoevenberg run at Lake Placid, their sled "Rochester" overturned. . . . One of top girls' solos fired in the recent KPAA Mixed Three-some was Vida Ingerick's 208.



Nichols

An all-Kodak curtain-raiser to the Royals-Ft. Wayne game Saturday night at the Sports Arena has been scheduled. Ken Mason will send a KO aggregation against Gordie Anderson's Bldg. 23 quint, KPAA Departmental League leader. Tipoff will be at 7:30 p.m.

Herb Schumske, KO kegler, mauled the Oxford Hall maples for a sizzling 669 series last week. His total included a fat 253 singleton.

Novice marksmen are expected to be out in force on the Beatty Rd. Range Sunday, Mar. 19, when the KPAA Gun Club stages its annual merchandise shoot. The event, open to all club members and their friends, will enable shooters of all ranges of ability to compete for valuable prizes. These include fly rods, casting rods, reels, lanterns, stoves, hip boots and other paraphernalia for the sportsman. Shooting will begin at 9 a.m. and carry on until 3 p.m. Refreshments will be served.

Charlie Nesbitt and Ronnie (Red) Overmyer, KP cagers, are piling up a terrific point total for Jack Brightman's Kaypees. In 27 games Nesbitt has a 475 total on 205 field goals and 65 free throws. Overmyer, in 28 games, has scored 165 goals and made good on 115 charity tosses for 445 points.

CW, KP Cop Playoff Openers

Gray Notches 32 Points as Cameras Win

With Chuck Gray, its 6-6 pivot ace, racking up 32 points, Camera Works downed Hickok, 80-71, while Kodak Park trounced Bausch & Lomb, 81-60, in last week's Major Industrial League playoff openers.

The victories brought the two teams together in the post-season tournament finals. This game was to have been played last night.

In regular-season competition the Kaypees sailed through a 10-game schedule unbeaten. Paul Ratigan's CW courtmen came in second, dropping only two games in 10 outings. Both losses were to Kodak Park.

See-Saw Battle

The CW-Hickok contest was a nip-and-tuck affair. After trailing 26-20 at the end of the first period, the Cameras grabbed a 44-39 half-time lead. Hickok's edged ahead, 63-62, in the third stanza, but with Gray and Johnny Coia clicking consistently, CW outscored the enemy 17-9 in the fourth quarter.

Gray's under-the-basket output netted him 12 field goals, and he added eight points from the charity stripe. Coia popped in 21 points, including one free throw. Bill Maslanka and Neale Tucker, besides caging 12 and 11 points, respectively, starred defensively.

In subdividing the Balcos, Jack Brightman's Kaypees ran their season record to 25-3. Charlie Nesbitt sparked the attack with 20 tallies, "Red" Overmyer added 17, and Ronnie Kraftschick 15. At half-time Kodak Park was in the van, 38-29.



Lensman — A noted wildlife photographer, Earl L. Hilfiker, above, will show color movies at the Mar. 17 meeting of the KPAA Fishing Club in the Bldg. 28 gym.

Anglers to See Outdoor Movie

Full-color motion pictures of fishing, hunting and wildlife will be served up to KPAA Fishing Club members Friday evening, Mar. 17. On that date Earl L. Hilfiker, noted wildlife expert and photographer, comes to the Bldg. 28 gym.

Hilfiker has just returned from a 9000-mile round trip by car, pack train and on foot to the Far West, where he took 6000 feet of color film.

Those in attendance will see close-ups of trout fishing in some of the most famous dry fly waters in the country.

Tickets, priced at 25 cents each, are available to all KPAA members and their families.

Lynch, Hoyt Top EK Keglers; Jeanne Glaser Leads Women

A hefty 268 solo by Gene Lynch in the KPAA B-16 League, and Phil Hoyt's 254-671 performance in the KPAA Thursday A wheel paced Kodak's bowlers last week. Jeanne Glaser, with a 216 game in the KPAA 12-Team League, led the gals. Ruth Weeks, KO, hit 214. League highs:

CW LEAGUES—No. 1: Ray Blaesi 236; George Kreiwaltis 225; Bill St. John 213; Ernie Kubanka 211. **Supervisors:** Claude Paasch 225; Art Volles 223; Hank Auer 219; H. Timian 214; C. Lamb 211; Matt Nowak 211. **Friday Men:** Harold Payne 224; Jim Englert 224. **Guards:** Al Cavanaugh 201. **Office:** Don Mills 203. **Wednesday Girls:** Sylvia Lincoln 203. **Friday Girls:** Mickey Sadden 200.

KP LEAGUES—Thursday A: Phil Hoyt 220-197-254-671; Doc Gress 252; Roy Nesbitt 235; George Malin 234; Ray Downs 232; Roger Hall 225; Joe Minella 225. **Trickworkers:** Paul Herring 244; Earl Gerstner 244; Rudy Burkhardt 240; Bill Becker 200-214-602. **Girls' 12-Team:** Jeanne Glaser 216; Hilda Smith 180-184-501. **Cine Processing:** John Buckley 222; Frank Bourcy 222. **Bldg. 65 Sunshine:** Ken Weiser 233-237-643. **Girls' 16-Team:** Lois Korsch 519. **Thursday B-16:** Gene Lynch 268-616; Al Joksas 248; Carl Schlottman 225; Dave Harris 223.

DPI LEAGUES—American: Sam Sunseri 245; Phil Mercandetti 214-244-617. **Scratch:** Walt Statucki 241-205-589. **National:** Mark Conover 232; Bill Blum 549. **Women's:** Terry Messmer 183; Dot

Trio's 2496 Wins H-E Pin Tourney

The trio of Lucy Murray, Palmer Gaetano and Clarence McVea teamed up to win the HEAA Lucky Strike Mixed Threesome bowling tournament.

The winners put together a total of 2496 to edge out the second-place combination of Lydia and Bob Schneeberger and Bill Schellinger by three pins.

For the winning threesome, Lucy totaled 830 on lines of 268-298-264. Gaetano closed with an 852, while McVea posted an 814. The winners received a \$45 slice of the prize melon. Fifteen other trios finished in the money.

Cafeteria 5, Bldg. 23 Win, Retain Leads

Industrial Engineering and the Plate Busters scored wins last week to effect the only major changes in divisional standings of the KPAA Departmental Basketball League.

Harry Horn's I-E quint turned back the Field Depts., 41-37, in a close tussle featured by Doug LaBudde's 21-point performance. The Plate Busters, led by Jose Balin and Al Burmeister, scored an easy 53-29 decision over Testing.

Bldg. 23 continued its winning ways to stay on top of the National wheel, downing Emul. Making, 55-30. Roll Coating was idle.

Emulsion Research swept to a 63-54 verdict over Kodacolor as Ed Teirlynck garnered 22 points. Duane Hagen had 18 for Kodacolor.

Art Steele's Film Emulsion crew took a 60-37 victory over Emulsion Coating. Claude Paasch meshed 23 points for the victors.

Cafeteria turned back Bldg. 14, 26-22, to hold its first-place berth in the American loop. In other games, Synthetic Chemistry downed Bldg. 58, 60-41; Sensitometry trimmed Bldg. 126, 44-20, and Bldg. 42 edged Color Control, 47-40. Gerry Braz's 28-point spree featured the Synthetics' win, and Burnett Eddy contributed 21.

National Division		American Division	
	W L		W L
Bldg. 23	13 1	Cafeteria	7 6
Roll Ctg.	10 2	Plate Busters	6 7
Emul. Res.	9 2	Bldg. 126	6 8
Ind. Eng.	10 3	Field Depts.	6 9
Film Emul.	9 3	Bldg. 58	4 10
Sensitometry	10 4	Bldg. 14	3 9
Kodacolor	9 4	Color Control	3 11
Syn. Chem.	8 5	Emul. Ctg.	1 10
Emul. Mak.	4 7	Testing	1 11
Bldg. 42	4 9		

INDIVIDUAL SCORING LEADERS		
	Fg	Ft
Ed Teirlynck, Emul. Res.	89	26
Doug LaBudde, Ind. Eng.	88	27
Duane Hagen, Kodacolor	85	25
Fritz Czerkas, Roll Ctg.	86	22
Gene Waddington, Kodacolor	71	27
Burnett Eddy, Syn. Chem.	71	26
Gerry Braz, Syn. Chem.	75	14
Jose Balin, Plate Busters	67	22
Rube Mickelson, Sensitometry	70	13

Dept. 49 Enters Playoffs Unbeaten

Dept. 49 completed its regular schedule undefeated, trouncing J Bldg., 52-37, last week in the CW Plant Basketball League. Dept. 63 won from Dept. 24, 31-24, and Joe Gerew scored 17 points as Dept. 66 conquered Dept. 32, 55-29. The playoffs have been postponed indefinitely. Final league standings:

	W L		W L
Dept. 49	10 0	Dept. 70	4 6
Dept. 63	8 2	Dept. 66	3 7
Dept. 32	4 6	J Bldg.	1 9



Court Capers — Phil Hutton of Emulsion Making takes a rebound in last week's Bldg. 23-Emulsion Making KPAA Departmental League game. From left, above: Don Lanion and Hutton of Emulsion Making; Jim Griffin and Alex Humulock, both of Bldg. 23. The league-leading Bldg. 23 quint won the game, 55-30.

SEC. 34, 66 P. L. & R.

U. S. Postage
PAID
Permit 6
Rochester, N. Y.

KODAKERY
EASTMAN KODAK COMPANY
Rochester 4, N. Y.
Return Postage Guaranteed

Harry W. Lake
296 Reynolds St.
Rochester 8, N. Y.

1 2 3