



On Its Way—Jim Laragy of Rochester Branch Stock, pulls out some 70mm. Micro-File Film to fill a customer's order. The Microfilm Corporation of Pennsylvania is a big user of this type of film.

Film Gets Westinghouse 4 Floors of Building

Film has given Westinghouse four floors of a building in Pittsburgh. Here's how it came about . . . It required the four floors to store the company's engineering drawings and other documents. Westinghouse had these microfilmed and the film takes a vault only 20 feet square.

The once dead storage space now is being used for offices.

Westinghouse uses two sizes of microfilm. More than 2,000,000 engineering drawings were put on 70mm. microfilm. Millions of smaller documents—shop orders, specifications and other records—were put on 35mm. film.

Go Back to 1885

The drawings dated back to 1885. Besides, there were blueprints of every tracing and every change. These required thousands of square feet for storage space and weighed tons.

In addition to saving space, the films provide permanent, reproducible records easily found in handy reference files.

The 70mm. films are filed separately in envelopes. This size is used for the larger drawings so that readable photographic prints up to 36 by 48 inch sizes may be made. The 35mm. films are filed by rolls for use in readers or may be blown up to 18 by 24 inches.

The Microfilm Corporation of Pennsylvania did the job for Westinghouse.

Kodak's Kodagraph Micro-File

Film, in both the 70mm. and 35mm. widths, is used exclusively by that company, according to its president, Robert G. Post. They use Kodagraph Projection Paper, too, in making reproductions. They're big users, also, of Kodak chemicals for developing and printing.

Post, quite naturally, is one of microfilming's most enthusiastic boosters.

"It is not only the most efficient system of filing," Post declares, "it is also the most economical."

"Microfilming, in my opinion," he says, "is one of photography's most important applications in the field of business."

Plants a Lawn Gets a Garden

Wanting an extra fine lawn surrounding his new home, Bob Brock, KO Maintenance, bought sludge from the City Disposal Plant.

He cultivated the ground at 119 Pinecrest Dr., Irondequoit, with the sludge, and then sewed grass seed.

What came up? Nice, thick grass—not a blade! Thousands of tomato plants sprang up!

He has transplanted 100 to his new vegetable garden, uprooted hundreds more—and still they come.

ES&L Mid-Year Report Reflects Home Buying

A lot of Kodak people have bought or are building homes this year. The Eastman Savings and Loan's mid-year report shows this. For the first six months of 1950, the ES&L approved 451 mortgage loans for Kodak people, amounting to \$2,534,600. This is nearly double the 277 loans approved last year over the same period.

Even more indicative is the fact that the ES&L's mortgage portfolio has shown a net gain of \$1,126,800 for the first six months,

compared with a net gain of \$1,159,700 for the entire year of 1949. At midyear, the Association carried \$12,939,870 in mortgage loans on its books.

The report also shows that Kodak men and women deposited \$765,000 in their ES&L accounts during the first six months of this year to bring their savings to \$20,114,816.78. This compares with \$19,295,621.49 at mid-1949.

Installment Shares Gain

Biggest increase was noted in installment shares, which offer Kodak people a long-range systematic savings program bearing 3 per cent interest. These amount to \$4,345,000. Income shares, which represent lump sum savings in units of \$100, and pay 2 per cent interest, come to \$7,912,300. Savings shares, the ES&L's short-range plan, with an interest rate of 1½ per cent, total \$7,857,450.

During the first six months, the ES&L paid \$187,460 in dividends on these savings.

The ES&L's FHA Modernization Loans now total \$565,037, of which \$241,284 was granted in the first six months of this year.

The Association's assets come to \$22,388,153. They were \$21,209,057 a year ago.

The ES&L half-year statement appears in detail on Page 2 of this issue.



Past and Present—This is Kodak's 50-year woman, Katherine Gerling, showing George Bodine, superintendent of the Paper Finishing Dept. in which she works, a few early-dated EK news publications. She has saved them all since 1907.

The Trolleys Ran to the Park Then . . .

"The trolleys used to bring us right into Kodak Park."

"It was way out in the country then."

"Girls who wanted to telephone went to a hotel nearby."

These are some of the things that Katherine Gerling recalls about her early days with the Company. Fifty years ago Sunday, Aug. 13, Katherine Gerling joined Kodak, and now holds EK's long-

est service record among women. And despite rain, sleet and terrific snowstorms, she never has been late for work.

A friendly, gray-haired, healthy woman, she's taken but one week

off other than vacations. That was to have her eyeglasses adjusted.

Eyes are mighty important in her work, too, because she looks for the most minute flaws in photographic proof paper in KP Bldg. 42. Since 1900, she has inspected practically all proof paper leaving the Company.

Proof paper was called Solio in the old days.

Instead of eating supper when they worked overtime, she says they "used to go out and get apples." Apple trees were common around the Park, located in country surroundings. "Some people had their own tea or coffee pot and would heat water on those little glue stoves," she relates.

Many Rode Bikes

A girl friend influenced her to join Kodak. For the first few years, a bicycle was the mode of transportation for the young girl in her teens. "There were many bicycle riders," she recalls. Paths for bikes ran down today's Lake, Dewey and Maplewood Avenues. "There were no houses along there at that time . . . all orchards."

Katherine still has Kodak stock given out by George Eastman. And she has saved every Kodak news publication. Her brother, the late George Gerling, was at CW for 40 years. He joined EK at the same time she did.

In way of celebrating her long career, Katherine Gerling wants no "fuss or feathers." She's content to just let the milestone pass. It may not be a coincidence that she is vacationing from Aug. 4 to 21.

"We used to think it was awful if any woman stayed 40 years," she smiles. "But it's surprising how years seem to go by like weeks."

A Letter From Japan

Tokyo, Japan
July 20, 1950

Kodakery Editor
Eastman Kodak Company
Rochester 4, New York.

Dear Sir:

Enclosed is the card informing you of the address of Lt. Ralph T. Tackett.

Lt. Tackett arrived in the Far East in September of 1949, and has been assigned as a Communications Officer. At present he is actively engaged in operations in the Korean area, and is attached to 5th Air Force Headquarters, Advanced, in the Communication capacity.

We here feel very strongly about our position and there is an overwhelming attitude that this job had to be done. Stories of the run on automobiles, hoarding, and price raising have a very sad effect on the people here. The essential need to protect our freedom is the most important thing in our minds, and without this freedom the pleasures we Americans take so for granted won't mean a thing.

I hope that through this letter, my husband will again receive the Kodakery. He enjoyed his associations at Kodak Park, and has been looking forward to the day when he could return to his employment there.

Sincerely yours,
Mrs. Virginia Tackett



Micro-Filed—At left are some of the compact files of 70mm. microfilms of Westinghouse engineering drawings. At right, the big stack of blueprints become the small stack of envelopes containing microfilms under this young lady's left hand.



New Colorama—This is a miniature version of the new color transparency at the Kodak Photo Information Center in Grand Central Station in New York City. In tune with summer, the Color-

ama is 18 feet tall and 60 feet long. It is illuminated by more than a mile of cold-cathode tubes. Thousands who pass through Grand Central view the big Colorama. H. Frederick Mayer of the EK Photographic Illustrations Div. made the pictures in a teamwork operation by the division. Les Goda sr. of Government Sales is the "grandfather" in the pictures. This is the third of the huge transparencies featured in the Colorama.

tions Div. made the pictures in a teamwork operation by the division. Les Goda sr. of Government Sales is the "grandfather" in the pictures. This is the third of the huge transparencies featured in the Colorama.

Hold It, Said Sam, and Jack Did... But Good!

Jack Shea, KP Printing Dept. golfer, had a red face recently and it wasn't all sunburn either.

Jack was one of the hundreds of fans who trudged the fairways in Columbus, Ohio, watching the country's top pros battle for the PGA crown. During a pause in a match, Jack stepped up to a drinking fountain to

slake his thirst. While he was enjoying the cooling draught, he heard a voice behind him call out, "hold it!" He turned, expecting to see a friend, but instead looked into the beaming face of Sam Snead, the tourney favorite.

Snead bent down to have a pull at the water but Shea, in his excitement, pushed the lever

down too hard, sending a sudden spray into Sammy's face. The crowd sensed humor in the situation and enjoyed a laugh as Snead took his combination drink and shower bath, while Shea's face got redder and redder by the second.

"Wonder," says Jack, "if this incident could have had anything to do with Sam's defeat?"

Photo Patter

It's Always a Good Idea To Take Extra Shot or Two

Every so often we make a shot that, for some special reasons, we want to be really good. And unless you're a superhuman photographer, there are times when it turns out to be mediocre. The saddest part about this is that the subjects of such pictures usually involve places, things, and people in some once-in-a-lifetime combination.

It would be difficult to make absolutely certain that this will never happen to you. But there is a form of insurance that will protect you most of the time from such a disappointment.

You simply make more shots of a given subject than you need or want.

Vary Your Angle

So, when it is a picture of great promise, shoot it more than once. Try it from several angles. If you've any doubt about speed or exposure, don't be afraid to experiment a little with camera settings. In this way you can hardly fail to come up with an acceptable picture. In fact, you may have some excellent ones.

Take your cue from the professional photographer. You never see him operating without this insurance. He learned a long time ago that it is far better to use up a little extra film and time and be certain that his customer will have a good picture.

Newhall Gets RPS Honor

Beaumont Newhall, curator of George Eastman House, has been elected to fellowship in the Royal Photographic Society of London in recognition of his work in the history of photography.

A widely known photographic writer and lecturer, Newhall is author of "The History of Photography," published in 1949, and a work on the photographs of Cartier-Bresson, which he did in collaboration with Lincoln Kirstein in 1948. During World War II he served in the Army Air Force.

Newhall was appointed curator of Eastman House in September, 1948. He had formerly been curator of photography at the Museum of Modern Art in New York.

He is a member of the Photographic Society of America, the Societe Francaise de Photographie, the American Association of Museums, and the Authors' League of America.

EASTMAN SAVINGS AND LOAN ASSOCIATION

Semiannual Financial Statement

Assets and Liabilities as at June 30, 1950

ASSETS			LIABILITIES		
	June 30, 1950	June 30, 1949		June 30, 1950	June 30, 1949
First mortgage loans less reserves	\$12,939,869.61	\$11,229,557.78	Due to shareholders:		
Share loans	54,869.00	33,559.66	on income shares	\$ 7,912,300.00	\$ 8,192,100.00
FHA modernization loans	565,036.80	500,405.26	on saving shares	7,857,457.71	7,381,245.97
United States Government bonds	8,457,004.58	9,015,810.41	on installment shares ..	4,345,059.07	3,722,275.52
Accrued interest on above bonds	42,465.21	43,843.01	Total due to shareholders	\$20,114,816.78	\$19,295,621.49
Shares in Savings and Loan Bank	78,000.00	78,000.00	Due to Federal Reserve Bank for Series E savings bonds issued	44,775.00	24,656.25
Cash on hand and in banks	233,573.91	282,040.92	Prepayments by shareholders for taxes and insurance on mortgaged properties	346,243.05	261,998.73
Other assets	17,334.63	25,840.67	Mortgage loans in process	254,003.76	183,277.34
Total assets	\$22,388,153.74	\$21,209,057.71	Deferred income — modernization loan interest	67,758.21	58,276.16
			Other liabilities	20,948.94	21,295.49
			Total liabilities	\$20,848,545.74	\$19,845,125.46
			Reserves, surplus and undivided profits	1,539,608.00	1,363,932.25
			Total liabilities and reserves, surplus and undivided profits	\$22,388,153.74	\$21,209,057.71

Income Statement—June 30, 1950

Six Months Ending June 30, 1950 June 30, 1949			Six Months Ending June 30, 1950 June 30, 1949		
Income:			Income before dividends	\$269,461.82	\$248,562.73
Interest received:			Dividends paid:		
First mortgage loans	\$279,880.82	\$251,748.29	on income shares	\$ 78,947.15	\$ 81,461.74
U.S. Government bonds	86,496.38	87,308.16	on savings shares	49,743.75	46,558.67
FHA modernization loans	22,832.97	18,497.80	on installment shares	58,769.44	48,492.25
Miscellaneous loans and shares	2,090.58	1,901.81	Total dividends paid	\$187,460.34	\$176,512.66
Total interest received	\$391,300.75	\$359,456.06	Net income	\$82,001.48	\$72,050.07
Profit on bond sales	2,534.06	2,534.06	Disposition of net income:		
Other operating income	2,309.99	2,257.88	Added to surplus	\$ 13,500.00	\$ 12,500.00
Total income	\$393,610.74	\$364,248.00	Added to reserve for contingencies		35,000.00
Operating expenses:			Added to reserve for investment losses		2,534.06
Salaries and outside services	\$ 53,817.55	\$ 54,556.04	Added to undivided profits ..	68,501.48	22,016.01
Tabulating service for plant accounts	7,390.00	7,515.00		\$ 82,001.48	\$ 72,050.07
Office supplies and stationery	3,786.68	2,843.94			
Postage	886.82	802.28			
Insurance premium on FHA modernization loans	4,527.08	2,994.59			
Attorney's retainer fees	750.00	750.00			
Mortgage placement expense	19,754.25	14,656.58			
Provision for mortgage loan losses	25,000.00	25,000.00			
Other expenses	8,236.54	6,566.84			
Total operating expense	\$124,148.92	\$115,685.27			

The accuracy of the accompanying statement is assured by a program of audit which subjects the accounts of the Association to an unusually thorough review. In addition to the work of the staff auditor, employed by the Association for the purpose of carrying on a continuous audit of the accounts, there is also a yearly audit by representatives of the New York State Banking Department, another audit by certified public accountants made at the direction of the directors of the Association, and a series of audits and checks carried on by an auditing committee composed of representatives of the three Rochester plants and Kodak Office.



Don't Miss These!—Children at play are choice photographic subjects. When you see an opportunity for a shot like this, don't miss it. You can take several snaps by getting the youngsters to run through the same action. That will insure at least one good picture.

'Neighbors' Meet

It took a SUNtour vacation cruise to Montreal, Quebec and the Saguenay River for two KP Bldg. 23 men to meet. They are Archie McFadden, Engineering Dept., and Jacob (Jake) VanMeurs, Paint Shop. Two other KPers also were among the three couples who met on the cruise. Going up the ladder, they are Mr. and Mrs. VanMeurs; Lyla McFadden, formerly of Statistical; Archie; Harriet Keegan, Printing Dept., Bldg. 48, and T. Keegan, P&S.



Film Testing Folks Focus Their Cameras

The emphasis is on pictures in the Film Testing Dept.

Folks in that department and members of their immediate families are participating in a snapshot contest designed to lure both beginners and advanced photographers alike.

The competition, which started July 1 and will continue through Sept. 15, is limited to black-and-white prints. Judging will be done by qualified persons outside the department.

Cash prizes totaling \$120 are being offered for the best pictures in each of three classes, in addition to special honorable mention awards.

A grand prize winner in both advanced and beginner's classifications will be selected by popular ballot, and the Kodak Camera Club will match the cash awards. All accepted entries will be exhibited in a salon to be conducted by the department Oct. 3-4-5.

Entries must be from work photographed after July 1, 1950. All types of subject matter are recommended, including household pets, horses, farm animals, wild life, zoo animals, etc. Also young people and adults, engaged in any activity, whether indoors or outdoors, and scenes and still life, such as landscapes, marine views, street scenes, buildings, as well as table-top or miniature arrangements.

Entries must be submitted to the training Section, Room 732, Bldg. 6-A, by Sept. 15, 1950.



Stories in Pictures—The pleasant task of appraising entries in the Film Testing Dept.'s first annual snapshot contest is being enjoyed by this trio of supervisory staff members. From left to right, they are Floyd Hertle and Robert Sprentall, assistant-superintendents, and D. W. Rupert, superintendent. The contest, which opened July 1, will continue through Sept. 15. Cash prizes are being offered to winners.

Death Claims 3 Park Members; Gawer Spent 29 Years Here

Death has claimed three KP men. They are John Gaffney, Paper Finishing; Camiel Wispelaere, Warehouse, Bldg. 49, and Edgar Gawer, Machine Shop, Bldg. 23.

Gaffney, a member of the same department since 1935, died July 12 after an illness of several weeks.

Wispelaere, who has a son, Edward, in the Specialty Products Dept., Bldg. 34, died July 17. Gawer started in the Machine Shop, Bldg. 23, in 1921 and in 1936 transferred to the E&M Planning Dept. He was fatally stricken July 18. A nephew, Melvin, is in Film Emulsion Dept.

Goin' Places and Doin' Things With KP People

A stag party for Jim Eichner, Irv Robinson and Dick Millham of the Accounting Dept., at the Greece Ridge Firemen's Exempt Association, drew 44 associates for an evening of fun. A skit was staged by Bill Jones, Ben Joyce and Bud



Irv Robinson, Jim Eichner and Dick Millham, l. to r., were welcomed to ranks of the benedicts at Accounting Dept. stag party.

Coyert and the three honored guests were welcomed to the ranks of the benedicts. Tom Edwards was chairman of the committee in charge of arrangements.

Dick Cuddeback, formerly of Manufacturing Experiments, and his wife, Thelma, formerly of the Suggestion Office, are proud parents of a baby girl, born July 9. The Cuddebacks are now living in Urbana, Ill., where Dick is working for his doctor's degree at the

University of Illinois. . . . Audrey Paprocki, Distribution Center, Bldg. 205, spent a two-week vacation in Minnesota. . . . John Duemmel, Bldg. 58, has left the Company to enter private business after completing 14 years of service. . . . Members of the Paper Mill, some 125 strong, gathered in the dining room for an informal party honoring Harry Lee, who recently completed 40 years at the Park. Ice cream, cake and coffee were served and a gift was presented to Harry by his admirers. . . . A dinner party was held July 5 at the Colony Restaurant for Ruth Bischoff, Distribution Center, Bldg. 205, whose marriage to Elmer Bauer took place Saturday, July 15. . . . Thelma Sprague, formerly of DPI, has joined the KP Public Relations Dept. staff in Bldg. 28.

Baseball, swimming and cards featured the annual picnic of the "Gophers' Club," made up of Kodapak Dept. members, held recently at Payne Beach. David Jardine and Hank Goldstone qualified as expert chefs in preparing a steak dinner. . . . Marion Ellis, Men's Employment, and Helen Forbes, Employment Records, motored to



Fair Queen—Queen of the New York State Fair, Phyllis Roderick, above, Syracuse University senior, will appear at the all-star softball game Friday night at the Lake Ave. ball park. Phyllis is touring the state, inviting folks to 1950 fair Sept. 2-9 at Syracuse.

Detroit, Mich., on a vacation trip. . . . "Gabe" Fyfe, Ind. Eng., and Mrs. Fyfe are spending several weeks' vacation in Nova Scotia. . . . When Hazel Lemcke and Bill Kennedy of the Printing Dept. were married July 15, Jimmie Macklin



Giles Hobin, who has his own show on WHAM-TV, sings for his fellow trickworkers at KP. Pianist is Stan Wright. Others, from left: Richard Nash, Richard Harrison, George McNamara.

served as best man, and Hazel's sister, Helen, as her attendant. A reception at her home on Manitou Rd. followed the ceremony. Also entertaining the bride was Bessie Quinn who was assisted by Iva Griswold and Jane Parsons as hostesses. A gift of silver was presented to the couple by Printing Dept. members. . . . Giles Hobin, popular young tenor and star of his own television show, "A Boy, A Girl, and A Piano," is handling trick duties in Bldg. 29.

Maj. Edward Roeper, Chemical Plant Lab, Bldg. 46, left June 30 for Camp Edwards, Mass., where he has been stationed for several weeks with the National Guard. . . . Jean Steele has returned to the Distribution Center, Bldg. 205, after an absence of several weeks. . . . Chemical Plant Lab members attended a party June 29 for Edward Zweigle who retired from active duty with the Company July 1. He was presented with gifts.

The Sundries Dept. will resume its pre-war annual picnic next month, getting together for a gala afternoon and evening Aug. 19 at Nine Mile Point Hotel. Dinner will be served at 3 p.m. and a variety

program of games is carded, with prizes for the winners. Joseph Isaacs is acting as chairman of the affair, being assisted by Dick Kinsella, Mabel Simmons, Gertrude Nolan, Gerard Deutsch, Joseph Zimmerlein, Eric Grossman, Bob Wilcox and William Vandertang. . . . Among those who retired from the Park July 1 was Irving Goldman of the Chemical Plant Lab, Bldg. 46.

Approximately 120 persons attended a party at the Crescent Beach Hotel honoring Alfred Colegrove, Distribution Center, Bldg. 205, who has completed 40 years' service with the Company. . . . Another affair at the same lakeside resort drew more than 50 to a Testing Dept. party July 11, at which Reg Rieger was the guest of honor. Reg's transfer to the new Processing Station in Dallas, Tex., particularly pleases his wife, Billie, who was born and spent her youth in Fort Worth, some 25 miles from where they will now be living.



Newshounds—Correspondents in the Industrial Engineering Dept. are, l. to r. above: Jack Narrie, Bill Heininger and Frank Dowling. They will be glad to receive personal items, tips on news stories, pictures, etc.



Matthews Meets Matthews—Boy Scout Jerry Matthews found out just how friendly Kodak people can be. Because of illness, he was "left behind" in Rochester by his fellow-Hawaiians when they stopped here en route home from the Boy Scout Jamboree. Marion Matthews, KPAA, lost no time in contacting friends in Bldg. 28 when she heard of the boy's misfortune. They all pitched in to cheer him with "sweets" and reading material. Above, the delighted boy meets Marion, as Nurse Shirley Flagler of Genesee Hospital looks on. Jerry flew home a few days later.

36-40 Club Picnic Slated Saturday

Members of the KP "36-40 Club" and their families will gather Saturday, July 29, at Cedar Springs for their annual summer picnic starting at 1:30 p.m.

George (Hack) Krembel is chairman of the committee arranging a program of stunts and games. He is being assisted by Norm Reininger and Don Bender. Mike Farrell will be in charge of refreshments.

Cedar Springs may be reached by taking Scottsville Road to North Road and turning right, Krembel said.

He Was a Corporal

Korean War Stirs Memories For KOer Who Served There

Korea's towns and cities means a lot more than unpronounceable names to Loren Jenne, KO elevator operator.

The ex-corporal was stationed in Southern Korea with the U.S. Army from February until October 1946.

Riding with President Syngman



Korean Kids—Loren Jenne, KO elevator operator, was stationed for eight months with the U.S. Army in Korea during World War II. Above, he is shown with two Korean youngsters.

5 Years Ago

(Kodakery, July 24, 1945)

Kodak people visit Municipal Airport to view Army's new medium bomber—the Douglas A-26 Invader, brought to Rochester by the Air Technical Service Command. Hawk-Eye has been making entire units of the complicated optical sight which directs the fire of the turret guns.

Kodak to push civilian output as soon as military demands lessen and the final "go" signal comes. For more than a year the Sales Dept. has directed a study of each city and territory to determine needs for adequate postwar dealer coverage.

Army men show movies and speak to Camera Works people on the Army's program for reconditioning wounded men.

With three years of sea duty behind him, Lt. Jim Arnold, USNR, of KO Credit Dept., has been assigned a shore job as assistant staff gunnery officer on the staff of the Commander in Chief of the Atlantic Fleet.

Rhee and the latter's American wife, he declared, was about the biggest thing that happened to him there.

A convoy of armed jeeps had been sent to Seoul to escort Dr. Rhee to the American headquarters, for an attempt had been made on his life.

"Did I ever feel good!" Loren continued. "A major was driving Dr. Rhee's jeep, and I, a lowly corporal, was riding in it with the president—I as a photographer."

"Dr. Rhee is very friendly," he added. Asked about the country's terrain he said that on the Western coast near the China Sea are plains and rice paddies. The eastern coast is more rugged, with mountains and forests in the North.

The majority of Koreans are farmers or fishermen. Rice and fish are their main foods. There are no cows in Korea, and saki or rice wine is the main beverage.

The cities, he described have regular modern buildings. However, their construction is flimsier than those in the States.

Houses are built of 3-inch layers of woven bamboo and clay. These are covered with stucco inside and out. Wood is scarce and the Koreans have little furniture. Wealthier ones do have low tables, but the majority eat, sleep and sit on the floor.

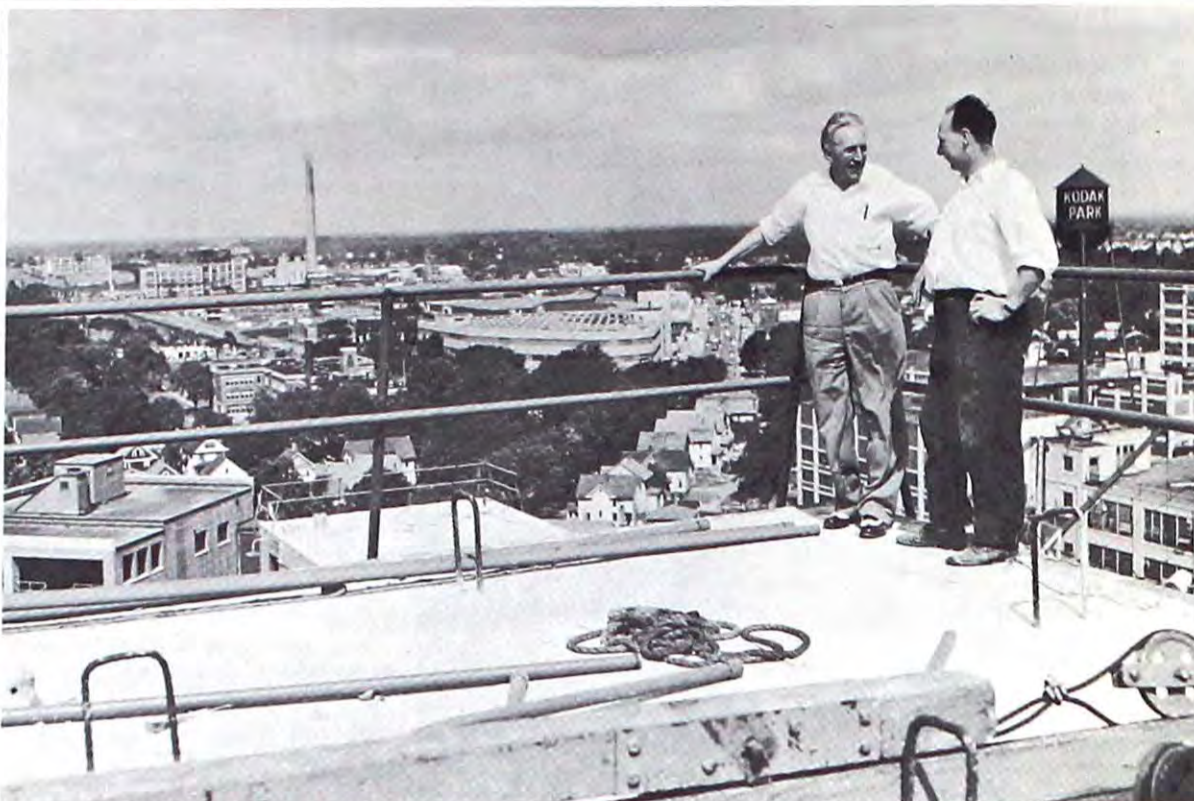
When Loren was in Korea, a cholera epidemic broke out. Medics called for soldier volunteers, gave them a half-hour's training and sent them out on the road to inoculate the natives.

"I worked for three days and two nights, with only five hours off," Loren declared, "and you certainly can jab a lot of arms in that time."

White is the color of mourning, he continued, and Koreans mourn for a relative or national figure much of the time.

Dying is not looked upon with fear by them, he explained. For years, they plan their funerals which always include banquets.

They all love uniforms, even the school children wear them, many of them ragged with wear. The Koreans are very proud of their school system, he concluded, and skipping school is unheard of.



A View That's New—KODAKERY photographer Jim Park climbed high atop the penthouse on the Emulsion Coating Dept. Bldg. 30 addition to get this panoramic view of Kodak Park and environs, looking due west. The new structure, towering more than 10 stories above street level, is now the highest point at the Park, being eclipsed only by the two familiar chimneys. More than 600,000 bricks and approximately 20,000 cubic yards of reinforced concrete were used in its construction. Shown enjoying the skyline vista are Harry Schubert, at left, and Joe Knoepfler, carpenter foreman.

Watch Out for Those Eyes!

The "eyes" have it when it come to personal safety but only if you are wearing safety glasses.

Authority for the statement is Mildred Seemann of the KP Medical Dept.'s Eye Service Division. She has distributed protective "specs" to thousands of Company men and women. The Park is believed to be one of the largest users of safety glasses among industries in the United States.

Mildred, who joined the Medical Dept. when it was located in Bldg. 5, remembers when less extensive precautions were taken to safeguard the eyes of Park people. Today the Safety Dept. exercises rigid control over areas where any possible danger exists. Glasses now may be obtained to guard against flying objects, paint, chemical vapors, welding flashes and dark-room hazards. Wearers of normal prescription glasses must switch to prescription safety glasses. Many serious injuries have been averted through their use.

Damaged parts are replaced as



Mildred Seemann issues safety glasses to Herbert Brasser.

designed by requisition. The glasses are inspected and properly adjusted by opticians to insure comfortable wear.

Increasingly more Kodak people are becoming aware of the need for adequate eye protection on the job. Last year 2600 pairs of prescription and 3200 pairs of plain safety glasses were issued. Opticians made approximately 17,000

adjustments during the year. Close to 10,000 patients received eye examinations and treatment from doctors and nurses of the Eye Dept.

The KP Safety Dept. reports a steadily diminishing number of eye injuries due to the widespread use of safety glasses. Whether plain or prescription-ground, the glasses are furnished free to plant men and women.



Meet the Sill Family—Grace Sill and her brothers, all Kodakers, dropped in to see their dad on the job when they gathered for this picture at Kodak Park. That's dad (Albert Sill) at his desk in E&M Planning, Bldg. 23 at KP. Standing from left are Fred of F.D. 1, Bldg. 29; Alfred of Engineering, Bldg. 23; Grace of the Disbursements Dept. at KO; Roy of Drafting, Bldg. 23, and Nelson of F.D. 3 in Bldg. 50 at KP.

Observatory Notes 100th Anniversary of Star Photo

KODAKERY

Vol. 8, No. 29 July 27, 1950

T. M. Reg. U. S. Pat. Office
Published weekly at Rochester, N. Y.,
and printed at Kodak Park.

EDITOR Phone 4100
ROBERT LAWRENCE

ASSOCIATE EDITORS
ART WOOD - 3207
WILMER A. BROWN - 3216

DIVISION EDITORS
Kodak Park - 6289
SIDNEY P. HINES
Camera Works - 334

JOHN CONNELL
Hawk-Eye - 305
KAYE M. LECHLEITNER
Kodak Office - 5128

EDITH ROGERS
Distillation Products Industries - 2421
WOMAN'S EDITOR

HILDA ROMAN - 4294
OUT-OF-ROCHESTER EDITOR
PAT CONNORTON

STAFF PHOTOGRAPHERS
NORMAN ZEMPEL - 3107
JIM PARK - 3107

KODAKERY Correspondents are located in every shop, department, branch and store

Harvard Observatory recently celebrated the 100th anniversary of the first star photograph. The first was made of Vega on the night of July 16-17 in 1850.

George Eastman House prepared an exhibit on the history of photography which opened at Harvard's Fogg Museum in connection with the celebration.

Dr. Mees Speaks

Dr. C. E. Kenneth Mees, vice-president in charge of research for Kodak, was the main speaker on a program held at the Fogg Museum.

Speaking on "The Progress of Astronomical Photography," he showed how the camera has superseded the human eye in astronomy. He explained the increasing importance of photography in this science.

William Swann, of KO's Industrial Photographic Sales Div., spoke at an afternoon symposium on the recording of nuclear particles by photography.

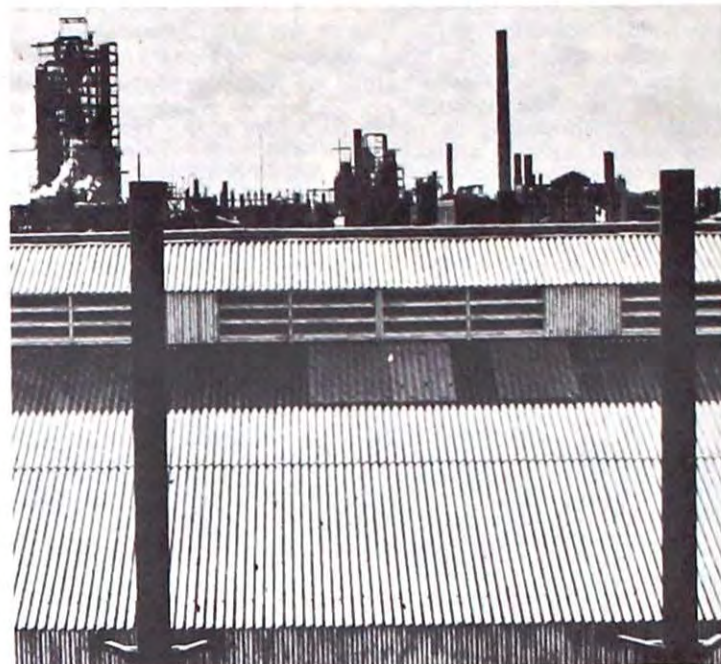
Pictures that breathe...



A flash highlighted this oil-drilling operation to give it the dramatic touch.



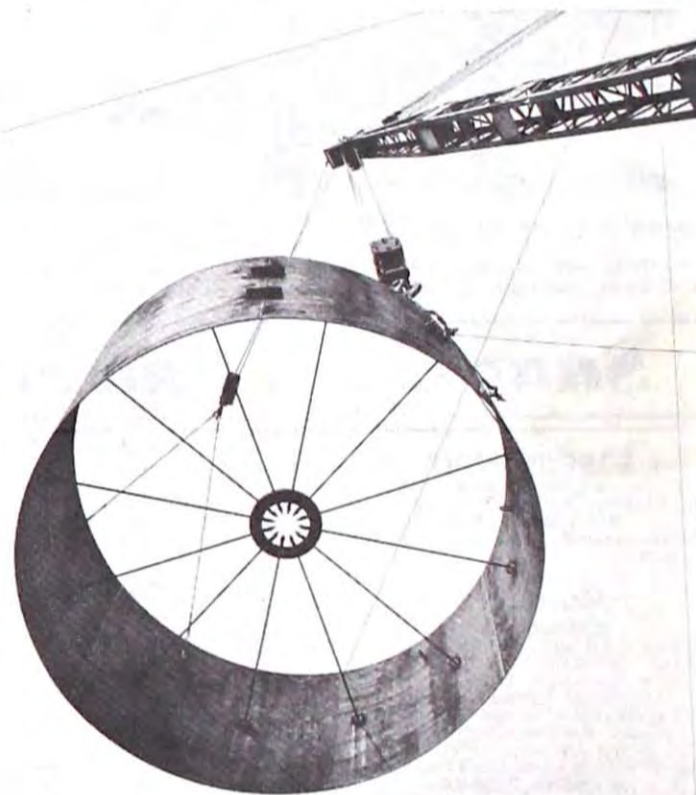
Against a background of clouds, this derrick builder walks a narrow girder with all the grace of a circus high-wire performer.



There's nothing unusual about a picture of an oil refinery, but a photographer made it so with this interesting pattern shot.



If you have an eye for the beautiful, the dramatic, the unusual, you can take an everyday subject and make it into a picture that sparkles... a picture that lives. That goes for industrial subjects, too, and here's proof. These pictures were taken by Standard Oil photographers and are part of a collection of some 55,000 in their "documentary" file. The pictures here happen to be about the oil industry, and tell their story well without the faintest trace of commercialism. Others in the Standard Oil collection are as typically "Americana" as these. George Eastman House recently featured some of the pictures in an exhibit.



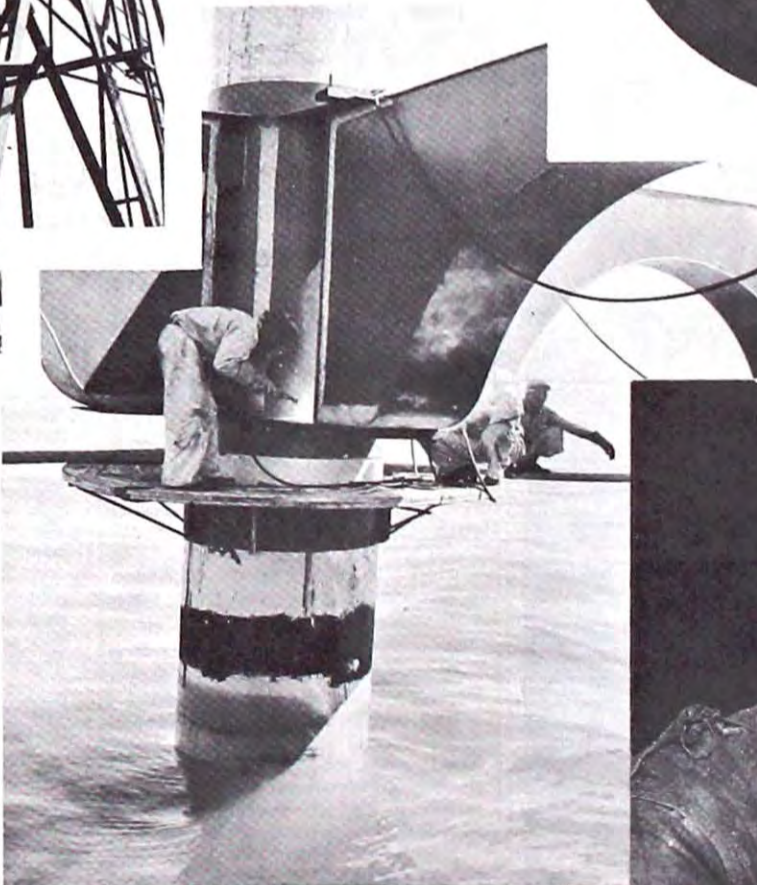
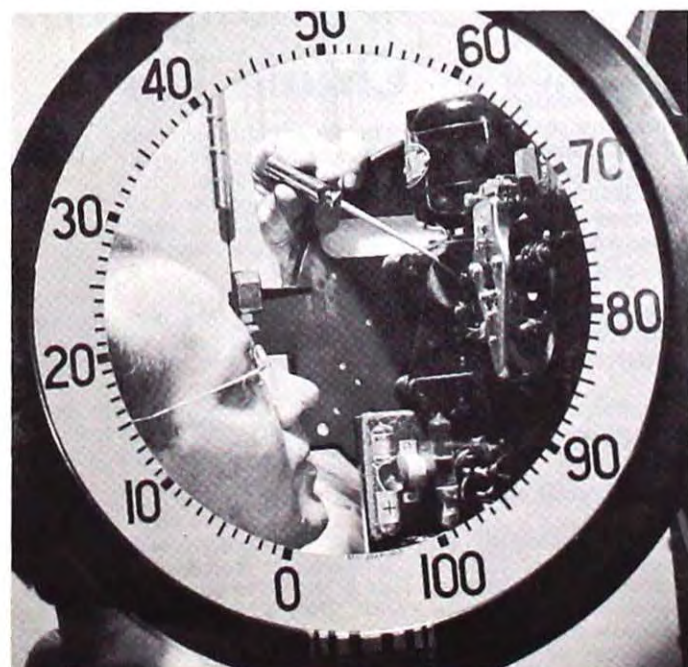
Shooting from below as a derrick lifted this huge piece of equipment took it out of the "ordinary" class.

...

Here's how the photographer saw this 40-year man... a refinery boilermaker.



This picture tells a powerful story of oil... and its people. It ties the two together quite effectively.



The water makes an interesting pattern for the above welding operation.

...

The photographer "framed" this mechanic in a Research Lab to give picture "oomph."



P Girl Uses Microscope, Camera To Hunt Nuclear Particle Tracks

Kodak's Ida Tschiderer is an "atom detective" and tells all about it in the current quarterly supplement of the PSA Journal. She hunts down the elusive tracks of nuclear particles with microscope and camera. It's this technique that she describes.

Her how-to-do-it article, a serious report, called The Photomicrography of Nuclear Tracks, appears in Photographic Science and Technique, the supplement which is published for members of the Photographic Society of America.

Ida, a member of the Emulsion Research Dept. in KP Bldg. 3, claims this is her first attempt at writing for publication. She did it at the request of several department members.

In the course of her work with special photographic emulsions,

she has produced photographs of many kinds of nuclear tracks, the trails made by nuclear particles in the emulsion. She has traced electrons, mesons, protons, deuterons, alpha particles, and as yet unnamed fission fragments.

She starts with a special highly sensitive photographic plate which has been exposed to nuclear radiation. With the developed plate placed under a high-power microscope, she hunts the tiny nuclear particle tracks . . . too small to see with the naked eye.

After locating a particular track, she photographs it section by section through the microscope. Prints are made from the negatives, and the greatly enlarged track is pieced together like a jigsaw puzzle.

Sees Thousands

Ida has photographed thousands of these nuclear tracks in the past three years to assist Kodak in developing new photographic emulsions for nuclear scientists. They use the emulsions to learn more about the atom, how it behaves.

"I also do theoretical emulsion research involving photomicrography," the technician points out. She's been with the Company since 1937, having obtained her Bachelor of Science degree at Nazareth College. She majored in chemistry and minored in math.

Ida's less technical interests include gardening with husband Joe, KP Bldg. 12, making all of her own clothes and taking pictures with a movie camera.

Her work with nuclear tracks is just one of the many new and interesting occupations created by the atomic age.



'Detective' at Work—Ida Tschiderer pursues the trails of nuclear particle tracks to assist Kodak in developing new photographic emulsions for nuclear scientists. Above, she thumbs through an article she wrote about her work methods.

Draws Duty

Joyce Robson, Export, right, who joined the Navy Reserve last year, is one of two WAVES seeing active duty for the first time. She and another girl are the first to be called from Rochester. Here, Lt. Betty Wolcott, Editorial Service Bureau, teaches Joyce to knot tie.



Grand Over Outdoor Grill: Frozen Vegetable in Foil

Can you cook vegetables on an outdoor grille?

Yes. Thaw a package of frozen vegetable . . . enough to break it into pieces. Put into aluminum foil, add seasonings and butter. Make double fold in edges of the foil to seal in moisture. Place on a grill for 10 minutes. Vegetables prepared this way retain their color and flavor and are delicious.

Should adults drink milk?

Yes. They need at least 2 glasses a day . . . 3 are better. Nutritionists believe that not only is this necessary for optimum health, but it helps to keep you looking young longer.



Wintress D. Murray

Does "overeating" refer to the quantity of food or the number of calories consumed?

It might mean either. For example, if you had black coffee for breakfast, soup or perhaps a salad for lunch, and then ate a very large dinner, you might not exceed your calorie requirement for the day—even though the quantity of food consumed at dinner could be called overeating.

I have heard how valuable liver is. Is there special value in heart, kidneys, tongue, brains and sweet breads?

These other variety meats contain some iron and vitamin A and B, but are not as good sources of these essentials as beef liver.

Among Us Girls

How she ever put 1000 miles on her new car in a little over a week is a puzzler to Anna May Gressens, Distribution Center. "We drove 250 miles through neighboring towns on the Fourth of July, but the rest was just city driving," says Anna in complete wonderment. . . . Orders to report to Great Lakes Naval Training Center were recently presented by Lt. (jg) Virginia Kupferschmid to Rochester's first woman to enter Reserve OCS. Virginia is in the CW Development Dept. . . . In Doris Casey's new Oldsmobile, she and Mary Rudolph, both of H-E Cleaning and Inspection Dept., wheeled their merry way to Cape Cod for their vacation. . . . One day in port (Portland, Me.), between 45-day trips to Persia on an oil tanker, was especially enjoyed last week by the brother of Kay Emmel. That's because Kay, who's in KO's Sales Dept., was vacationing in New England and on hand to greet him when the ship docked.



Betty Gossin

Cake Recipe Heartily OK'd By 'Samplers'

As quickly as you can say Jack Robinson . . . well, almost . . . Betty Gossin's cake is in the oven. Naturally, it's called Jack Robinson Cake. The frosting is baked right along with, and on top of it. Betty's associates in KO Roch. Branch Adjustment Dept. have sampled it and recommend it highly.

JACK ROBINSON CAKE

2 c. cake flour
3 t. baking powder
1 t. salt
1 1/4 c. sugar
1/2 c. shortening (use one recommended for quick-method cakes)
3/4 c. milk or half evaporated and half water
1 t. vanilla
2 eggs

1. Have all ingredients at room temperature before mixing.
2. Sift flour; measure. Add baking powder, salt, sugar and sift again into large mixer bowl. Add shortening, milk and vanilla.
3. Beat 2 minutes with electric mixer at low speed. Add unbeaten eggs. Beat 1 minute longer.
4. Pour into greased rectangular pan 8 1/2 x 13 1/2 x 2 inches.

BAKED-ON TOPPING

2 egg whites
1 c. brown sugar
1/2 c. chopped walnuts or pecans

1. Beat egg whites until stiff, but not dry.
2. Add brown sugar gradually and beat until well combined. Spread on top of cake batter; sprinkle with nuts and bake on center rack in moderate oven (350 degrees) for about 35 minutes. Cool.

Wedding Bells Chime Early

Her wedding invitations for Aug. 2 were ready to mail—but she can tear them up now.

Helen Tobey, KO Export, received a telephone call from her fiancé, Sgt. 1/c Ray Flack at Ft. Monroe, Va.

That was July 14, and Ray, a veteran of 64-months overseas duty, had just been alerted. Helen and her sister left Rochester two days later for Virginia.

Wedding bells rang for Helen and Ray the next afternoon. The couple now are honeymooning in Knoxville, Tenn. and visiting his family there.

He has orders to report in the State of Washington on July 31.

The soldier and Helen first met Labor Day Weekend 1942 in New York. They corresponded for seven years before seeing each other again last August when he returned from duty in Japan.

Snared . . . Paired . . . Heired

Engagements

KODAK PARK
Ida Clubley, Box, to John Lang.
KODAK OFFICE
Florence Levine, Tabulating, to Harvey Rubin.

Marriages

KODAK PARK
Helen LaMaglio, Film Pack, to Thomas Hirschak. . . . Ruth Marie Sherman, Statistical, to Leon J. Trombley. . . . Wilma Veerman, Safety Cine, to Albert Brooks, Motion Picture Film. . . . Violet Marshall, Roll Film Pkg., to Cpl. James Jackson. . . . Audrey Ann Lowe to Roy Sawyer Jr., Film Testing.
CAMERA WORKS
Elizabeth Platt, Dept. 19, NOD, to Gordon Harvey. . . . Alice Shirado, Dept. 87, NOD, to George Lally. . . . Shirley Lapp, KO, to Robert Horn. Dept. 16, NOD.

HAWK-EYE
Eulanda Nowakowski, Dept. 60, to Robert Kofsky.
KODAK OFFICE
Stella Wolak, Roch. Br. Stock, to Ted Klejment, KP. . . . Florence Knierim, Finishing, to John Keehn.

Births

KODAK PARK
Mr. and Mrs. Carl Jansen, son. . . . Mr. and Mrs. Frank Guay, daughter. . . . Mr. and Mrs. Bernard Heinsler, son. . . . Mr. and Mrs. William Wolf, daughter.

CAMERA WORKS
Mr. and Mrs. Richard McDonnell, daughter. . . . Mr. and Mrs. Clement Becker, daughter. . . . Mr. and Mrs. Robert Lamb, son. . . . Dr. and Mrs. William Feldman, son. . . . Mr. and Mrs. Edgar O. Dixon, daughter.

HAWK-EYE
Mr. and Mrs. Ross Mitchell, daughter. . . . Mr. and Mrs. Bill Sherwood, son.

KODAK OFFICE

Mr. and Mrs. George Shirey, son. . . . Mr. and Mrs. Ronnie Koepsell, daughter. . . . Mr. and Mrs. Ray Miller, daughter. . . . Mr. and Mrs. Donald McKibben, son.

Holy Year Lures 3 EK Girls to Rome

"Breath-taking experience" is the way three Kodak girls describe their private audience with the Pope.

Adeline (Delia) Mitrano, Katherine Mattle, both of KP Bldg. 25; Delia's sister, Mary Mitrano of Dept. 67, CW, and a fourth friend, Mary De Santis, took a trip to Europe, seeing four countries in their travels.

"We went because it was Holy Year," said Delia. "Through our pastor, who's in Rome now, we were lucky enough to have the private audience."

Delia, Katherine and the two Marys spent a good share of their vacation in Italy, visiting various places of interest via bus. They spent an exciting four days in Paris and then on to Switzerland where towering snow-capped mountains struck them with awe. After an all too short visit in London, they were off for Southampton to board the Queen Mary again—this time for home.

It won't be long now. Gerry Redfern's wedding day is Aug. 5 and she'll become Mrs. Gerard (Jiggs) Brodzinski. The newlyweds will "head south" on their honeymoon, eventually winding up at Myrtle Beach, S.C., a childhood haunt of Gerry's when she lived in Columbia, S.C. Washington, D.C. is one place they plan to visit en route.

Right now, apartment redecorating and wedding plans take priority over such other activities as sewing, knitting, crocheting, swimming and rifle shooting. During business hours, Gerry does secretarial work in KO Engraving Dept.

Arrow Narrow—

That's the new silhouette for fall . . . a slender skirt, 14 inches from the floor. Here, Gerry Redfern of Kodak Office models a McCurdy's suit with just such a silhouette, also featuring the new combo of velvet and tweed. Picture was taken in the Highland Park conservatory. A double begonia is the attention-getter.



The Market Place

AUTOMOBILES FOR SALE

Buick, 1947, Roadmaster convertible. Glen. 4540-W, after 5 p.m.
Chevrolet, 1935, town sedan. 70 Tyler St., Glen. 6120-M.
Chrysler, 1940, Royal club coupe. Glen. 3239-J.
Dodge, 1939, 4-door. 75 Christian Ave. Ford, 1937, coupe. HAMltn 1512.
Ford, 1939, coupe, radio, \$150. Room 17, LaRoche Hotel, 10 East Hanford Landing Rd.
Ford, 1949, 4-door, custom, nylon seat covers. Mon. 6763-J.
Plymouth, 1949, convertible, dark green, name price. Mon. 0806-R, Wednesday between 6-7 p.m.
Plymouth, 1949, special deluxe sedan, 4-door. Also 1935, 4-door Plymouth sedan. Glen. 5739-R.
Terraplane, 1937. Mon. 5196-R.

FOR SALE

AFRICAN VIOLETS—130 Oakridge Dr., Irondequoit.
ANTIQUES — And furnishings. Also chesterfield, custom built; davenport; chair; all down-filled cogs well. 166 Leland Rd.
BABY CARRIAGE — Thayer folding. Also bathinette; playpen; Teeter-Babe; car seat. Gen. 2990-W.
BABY CARRIAGE—Whitney Steer-O-Matic, English coach type. Also twin beds, complete, vanity, dresser and bench in rock maple. Glen. 4572-J.
BASSINETTE—53 Wilkins St., upstairs.
BED—Double, mahogany, 18th Century style with box springs, complete. Hill. 2046-W.
BED—Single with metal frame or will swap for a double bed. H-E Ext. 268 or Pittsford 223-M.
BEDROOM SUITE—Also dining room suite, both walnut. Cul. 0958-R, after 5:30 p.m.
BED SPRINGS — One pair, for twin beds. Gen. 7380-M.
BED SPRINGS—For ¾ size bed, \$10. Char. 1003-J.
BICYCLE—Girl's, \$20. Mon. 2791-J.
BICYCLE—Girl's, sidewalk, 12" chain drive. KP Ext. 8265.
BICYCLE—Girl's, full size, \$10. Char. 1777-R.
BICYCLE—Man's or boy's, 26", Schwinn. Cul. 0813-J.
BICYCLE—Majestic. 330 Flint St.
BICYCLES—Two boy's, 1 girl's, 24 Ely Ave., Conesus Lake, H. E. Rappleyea.
BLANKET—Kentwood, rose, 72"x90", all wool. Glen. 4923-M.
BOAT—Car-top, marine, plywood, seats three, 10 ft. long. 466 Clay Ave.
BOAT—12', deluxe, metal, \$30. Cul. 1335-R.
BOAT—Thompson, 14', with Evinrude 17 h.p. outboard motor. Nelson Holcomb, Wautoma Beach, Hilton.
BOAT—14', Thompson Zepher. Cul. 4682-R.
BOOKS—All from Book of the Month, \$1 each. HAMltn 1395.
BUFFET—Walnut, 60", \$8. Also porcelain sink, mixing faucet, \$8; 4-qt. Mirro-Matic pressure cooker, \$8; lady's black coat, size 44-46, \$5; window sash, \$1 per pair. Char. 0749-R.
CAMERA—Argus C-3, Flash attachment, carrying case, Kodaslide Projector Model 2-A, 108 Brook Rd., Pittsford, Hill. 2015-R.
CAMERA—4x5 Pacemaker Speed Graphic and accessories. Mon. 7210-J, after 5:30 p.m.
CAMERA—5x7 View Corona with reducing back, 8½" Ilex lens, four 5x7 holders and hangers, 3 boxes film, DeJur Critic Meter with or without lens. Phyllis Holt, 241 Plymouth Ave. S.
CAMERA — 8mm. Revere, magazine type, Revere Projector, both for \$185. 31 Petrossi Dr., HAMltn 0192.
CAR RADIO—And spotlight. 77 Garson Ave.
CLARINET—B flat Conn, \$75. Also Underwood portable typewriter, \$35. J. King, 28 Merrill St.
CLOTHES—Man's, suits, size 42, hats, shoes. Also lady's slack suit, size 16. Char. 0743-W.
COAL BURNER — Circulating heater, with pipes, heats 2-3 rooms, \$20. 51 Laurelhurst Rd.
COMPRESSOR — Kellogg, for paint spraying, twin motor, air filter. Also 1 DeVilbiss and 1 Binks spraygun, make offer. Cul. 0439-J mornings.
COOKING UTENSILS—Lifetime stainless steel, 16 pieces. Also electric fan. 68 Adams St.
COTTAGE LOTS—At Keuka Lake, reasonable, No. 1129 East Side Bluff Point, 11 miles from Penn Yan, owners on premises Sunday. HAMltn 5500, Ext. 548 evenings.
DINING ROOM SET—Nine-piece, English oak, red leather seats. Char. 2524-J.
DINING ROOM SET—Small, walnut, with four chairs, \$60. Also maple breakfast set, porcelain top, \$15. 363 Simpson Rd.
DINING ROOM SUITE — Nine-piece, walnut, \$35. Glen. 1099-R.
DINING ROOM SUITE—9-pc. mahogany with pads and three extensions, \$95. Glen. 4893-W.
ELECTRIC CLEANER—General Electric. Glen. 6159-M.
ELECTRIC IRON—Universal, \$8. Cul. 1156-M.

FOR SALE

ELECTRIC ROASTER — Westinghouse. Also General Electric upright cleaner. Mon. 0438-J, after 6 p.m.
EXTENSION LADDER—36", \$18. Cul. 0439-J mornings.
FRIGIDAIRE—\$35. Glen. 5532-W evenings.
FUR COAT—Mouton lamb, size 12. Char. 0913-W.
FURNACE—Williamson, blower, general stoker. 60 Cutler St., Glen. 3895-M.
FURNACE—Williamson, 24", with or without blower and automatic controls. Also Norge refrigerator, apartment size, 1455 Clifford Ave.
FURNITURE—Must be sold, round coffee table; refrigerator; junior bed; radio combination and cabinet; leather-cushioned sitting room set; blue rug 9x12 suitable for cottage. HAMltn 2163, after 5 p.m.
FURNITURE—Beautiful walnut dining room suite, \$125; bedroom suite, 9x12 Wilton run; other articles. Char. 0620-J.
GAS RANGE—Roper, white with red trim, table top. Char. 2603-J.
GOLF CLUBS—Full set man's clubs, 8 Spalding irons, 4 woods, putter and bag. Mon. 5262-R.
GOLF CLUBS—Three woods, 7 matched irons, putter, \$50. Glen. 2772-R.
GOLF CLUBS—And bag, man's, matched set of three woods and eight irons. 126 Lexington Ave., Glen. 2852-M.
GOWN—Light blue chantilly lace and net, size 13-14. Glen. 6862-J.
GRAIN BINDER — McCormack-Deering, used only for harvest of 75 acres. Lima 39-F-6 evenings.
HIGH CHAIR—And nursery chair, both for \$7. Also lady's left-hand golf clubs and bag, \$10. Mon. 0719-J.
HOT WATER HEATER—Bucket-A-Day, 30-gal. tank, \$10. Glen. 4687-J.
HOUSE TRAILER—14 ft., sleeps four. \$300. Mon. 8313-R.
HOUSE TRAILER—Glider, 1946, 24', located on large lot in attractive park, 9 miles west of KP, sleeping room attached, garden, water, bottled gas, cement patio, \$1400. 1742 Parma Hilton Rd., Spencerport 335-J.
HOUSE TRAILER — Mobile, 1949, all aluminum, refrigerator, gas stove, double sink, shower, insulated. 591 Ridgeway Ave., after 5 p.m.
ICE BOX — White porcelain, chrome handles, 100-lb. capacity. 175 Rosewood Terr., Cul. 1913-M.
ICE BOX—75-lb. and well insulated. East Rochester 772-W.
IRONER—Deluxe model. Char. 2427-W.
KITCHEN SET—Table and 6 chairs with chrome frame and leather padding. Also Frigidaire. Glen. 5504-W.
KITTENS—Free, for good home. Char. 2403-R.
KITTENS—One black, one tiger, 10 weeks old. Char. 1986-J.
KITTENS—Persian, 6 weeks old, registered, blues, whites, brown tabby. 4830 Ridge Rd. W., Spencerport.
LAWN MOWER—\$6. 23 Tyler St.
LAWN MOWER — All steel, wooden handle, \$5. 420 Clay Ave., Glen. 1987-R.
LAWN MOWER—Also upright piano; storage chest, 68" long, 21" wide, 40" high, 4 drawers, shelves; white enamel bird cage. Gen. 2263-J.
LAWN MOWERS—18-inch Craftsman, \$9.50; Pioneer electric, \$45. Hill. 2046-W.
LIVING ROOM SUITE — Three-piece, 21 Turpin St.
LIVING ROOM SET—Two-piece, rose frieze, \$35. Char. 2285-R.
LIVING ROOM SUITE — Three-piece, blue and maroon, \$150. 114 Revella St., HAMltn 2272.
LIVING ROOM TABLE—And boy's 26" bicycle, \$6. Glen. 1707-W, after 5:30.
LOT — 50x150, on Hoffman Road in Irondequoit, will accept reasonable offer. Glen. 1761-J between 6 and 8 p.m.
MOTOR—For 1936 Dodge. Also 1937 Plymouth transmission. Cul. 3219-M.
MOTOR BICYCLE—Whizzer, 1948 model, new tires and brakes, completely rebuilt motor. Char. 2603-J.
MOTORCYCLE — Harley Davidson. Fairport 917-F-2.
OIL HEATER—Two-burner, \$10. Also 2 oil stoves, 2-3 burners. 24 Ely Ave., Conesus Lake.
OIL STOVE—Cabinet, right-hand oven. Mon. 5196-R.
OUTBOARD MOTOR—1949, Johnson, 5 h.p. Also 14', Penn Yan Trail-boat. H. Linscott, KP Ext. 5289.
PASTEURIZER—Home, for milk, holds 8 quarts, all attachments, electric, half price. Lima 39-F-6.
PHOTOGRAPHIC SUPPLIES—3¼x4¼ Speed Graphic with flash; Pan type tripod; carrying case; 6 film holders; pack adapter; portable portrait lighting outfit; darkroom equipment, best offer. 651 Stone Rd., Char. 3227-R.
PIGS—Small, about 25 lbs. each. 1000 Emerson St.
PLATFORM ROCKER — Victorian, 2 matching chairs, walnut. At end of Lighthouse Rd., turn left, 3rd cottage, Hilton.
PORCH STEPS—45½"x32½", 4 steps, brand new. 59 Indiana St.
PRESSURE COOKER — National, for canning or cooking, 7 qt. size. Cul. 0813-J.
PUPPIES — Beagles, pedigree, AKC registered, 7 weeks old. 745 Dewitt Rd., W. Webster.
PUPPIES—Part Dalmatian, 2 months old. Hill. 2033.

FOR SALE

PUPPIES—Collie-Shepherd, brown and white markings, female, \$5. Ontario 3140.
PUPPIES — English Setter, purebred, not eligible for registration, from good hunting stock, \$15. 721 Curtis Rd., Hilton 3827.
PUPPY — Pedigreed, cocker spaniel, buff color, housebroken. Gen. 4881-R.
RADIO COMBINATION—Howard, 1948, blond, armchair model. Char. 2183-J.
RADIO—Philco upright, \$20. Also Cold Spot refrigerator, \$80. 1327 Jay St. evenings.
RADIO-RECORD PLAYER — Crosley combination, console model, mahogany cabinet. Baker 4439.
RADIO-RECORD PLAYER—RCA Victor, floor model, \$37.50. 88 Post Ave., Gen. 5410-M.
REFRIGERATOR—Coldspot, 6.3 cu. ft., \$25. Also GE vacuum cleaner, \$10. 527 Magee Ave., Glen. 0595-M.
REFRIGERATOR—Coldspot, 7 cu. ft. Glen. 3876-R.
REFRIGERATOR—Frigidaire, 7 cu. ft. 639 Bonesteel St., Char. 1112-J.
REFRIGERATOR — Frigidaire, sealed unit, suitable for small family. Glen. 2464-J.
REFRIGERATOR — Grunow, \$50. Also girl's 28" bicycle, \$15; tricycle for 2 to 4 yrs., \$4. Cul. 2124-M.
REFRIGERATOR — Grunow, electric, medium size, ideal for cottage or summer home, \$55. 552 Ridgeway Ave., Glen. 2673-R evenings.
REFRIGERATOR—Kelvinator, 8 cu. ft., \$35. Cul. 3616-W.
REFRIGERATOR — 6 cu. ft., Gibson. Char. 0677-R.
ROWBOAT—14 ft. 127 Cummings St.
RUGS—One 12x12 blue sculptured; one 9x12 gray floral. Also tables and lamps. 49 Werner Pk.
SAILBOAT—Skaneateles Comet, ready for water, \$325. Glen. 2968-M.
SEWING MACHINE—White, electric, console model, walnut cabinet, \$75. 90 Belmont St., Mon. 2556-J, after 6 p.m.
SHOES — Charles Chester, for men, women, children, air-cushioned, non-slip soles. 574 S. Plymouth, LOcust 3102.
SINK — White enamel, iron, 18"x30", swing chrome faucets, trap. Gen. 5162-J.
SKILL SAW—Heavy duty, 6", 2 new blades. W. T. Everitt, Webster 37-F-13.
SNOW SUIT—Girl's, waterproofed, reversible, brown with green plaid trim, size 6x. 72 Avis St., lower bell.
SPRAY GUN—Air compressor, trailer type Micio. Also 50' air and paint lines; 5 gal. and gal. paint pot, best offer. 651 Stone Rd., Char. 3227-R.
STAMPS—Mint condition, back to the Columbian Exposition in blocks of four. Cul. 2142-W.
STOVE — Combination gas-oil, white. Mrs. Scidone, 61 Greenleaf St.
STOVE — Combination Glenwood gas and oil burning, \$15. Gen. 7729-W.
STOVE—Gas, table model. Glen. 3580-W.
STOVE—Gas, 4 burners. Cul. 3017, after 5 p.m.
STOVE — Gray enamel, combination coal-gas. 74 Avenue D, Glen. 4587-W.
STOVE — Small combination coal-gas. 91 Whiteford Rd., Mon. 4512.
STOVE—White enameled, 4 burners. Also chef's coat, size 42. 118 Jewel St., Glenwood 4019-M, after 6 p.m.
SUIT—Lady's beige gabardine, size 12. Also kittens, 6-weeks old, free. 54 Nantucket Rd., Glen. 0451-R.
SUIT—Woman's gray wool gabardine, worn only twice, size 12. Also white two-piece cotton suit, size 9. 49 Enterprise St.
TABLE—Dropleaf, mahogany, Duncan Phyfe extension, custom-made pads, seats 10-12, \$50. 267 Penhurst Rd., Brighton.
TABLE—Round dining room with extension leaves, \$10. Glen. 2135-R, after 6 p.m.
THERMOSTAT — Minneapolis-Honeywell, transformer, auto draft controls, for hot air furnace. Gen. 5516-W mornings.
THERMOSTAT — Minneapolis-Honeywell. Also 40-gallon hot water tank and gas heater, \$25 for all. Mon. 2791-J.
TIRE—7.00x16, \$17. 5 Finch St., after 5 p.m.
TIRES—And tubes, two, 6.16. C. W. Carroll, Glen. 6090-M.
TIRES—Two, 7.00x15. 552 Ridgeway Ave., Glen. 2673-R evenings.
TIRES—Four 5.50x17; two 5.50x18; two 5.50x19; two 6.50x15. Also two trailers, one with 6.00x16 tires, the other 5.50x17. 158 Lincoln St., after 7 p.m. daily or before noon Sunday.
TIRES—Three, 2 inner tubes, 7.00x15, \$35 for all. KP Ext. 444 or Cul. 3267-J.
TOOLS—Starrett micrometer No. 3, 1 inch; Brown and Sharpe No. 633 thread pitch gauge, pitches 4 to 84; 79 inch flexible steel rule in metal case. Mon. 7213.
TOP-ICER—100 lbs., \$5. Glen. 7140-M.
TRAILER — American, 31-foot coach, toilet, shower, attached storm shed, 6'x8', \$2900. Greenridge Trailer Park. Ridge Rd., Garland, N.Y.
TRAILER—One-wheel, equipped with tail light, stop light. 299 Winchester St., Glen. 6584-W.
TRAILER — Utility, 4'x8' rack body, lights, 6.00x16 tires. Mr. Chandler, Apt. 5, 203 Lake Ave.
TRAILER HITCH—Fits 1939 DeSoto frame. Cul. 3249-M.
TRICYCLE—For 5-6 year old, \$10. Glen. 4123-R.
TRICYCLES — Two, 20" wheel. 1786 Edgemere Dr., Char. 1680-J.
TRIPOD—Aluminum, adjustable head, never used. Also baby's chifforobe. HAMltn 5896 Sunday between 9 and 2.

FOR SALE

TRUMPET — Martin Imperial. Char. 3542-J.
TRUNKS—Wardrobe, \$12; sample, \$10. 27 Woodside St.
TURKEYS—Broilers, dressed. 241 E. Linden St., East Rochester 462-W.
VACUUM CLEANER — With attachments, \$5. Also fruit jars, \$35 per dozen. Char. 0433-M.
WASHER—ABC Wringer, \$10. Char. 3857-M.
WASHING MACHINE — Also treadle sewing machine; Stromberg Carlson table radio. Glen. 4097-W.
WASHING MACHINE — Easy, ancient. Also 18-inch lawn mower, both running. \$5 each. 120 Bronson Ave.
WASHING MACHINE—Easy, Spindrier. Cul. 1091-R.
WASHING MACHINE—Easy, Spindrier, 1949 model. 60 Rochelle St., Char. 1458-W.
WASHING MACHINE—General Electric Spinner, \$30. Char. 3702.
WASHING MACHINE—Speed Queen, 1948 model. Glen. 5838-J.
WATER HEATER—New Sepco electric, 52-gal. deluxe, \$120. Glen. 3899-W.
WATER HEATER—Side-arm gas, 30-gal. tank and fittings. Cul. 5431-W.
WINDOW—Double hung, frame with storm window and screen, 30x20. Also sink suitable for darkroom; dining room drop fixture. Glen. 4247-M, after 6 p.m.
WINDOWS—Two, and casings, one 20x50, one 28x39, \$15 each. 146 Winstead Rd.
WINDOWS—Two, sash, 54"x48", individual glass, 6"x8½". Also baby walker; rural type mail box. Gen. 5475-W.
WINDOW SCREENS—One 28"x47", and two 24"x43". Gen. 6654-M.

HOUSES FOR SALE

HOUSE — 6-rooms, attached garage, large lot, Ellison Park Heights. Hill. 1197-R.

WANTED

BABY SITTER—Highland-Clinton section. Mon. 4536-M.
BEDS—Twin, complete with springs. Hill. 2080-R.
BEDROOM SUITE—Twin, burl walnut or dark mahogany. Gen. 3547-W.
BICYCLE—Boy's, 24". Glen. 5612-R.
BICYCLE—Boy's, 24". Also sidewalk bicycle. W. F. Swann, Char. 1664-J.
BICYCLE — Boy's, 24" frame. Glen. 2191-R.
CHILD CARE—Will care for children days in my home. 54 Vista Dr., Glen. 2798-W.
COUNTRY HOME—On 1-15 acres, 3 bedrooms, modern conveniences, within 18 miles, no dealers. Mon. 1339-R.
COUPLE—Quiet, congenial, to share home with couple or room with kitchen privileges, references exchanged. Glen. 1990-W.
DRESSER—Or chest of drawers, blond mahogany, modern style. HAMltn 2163, after 5 p.m.
FORD—Model "A". Call 237 Phillips Rd., Webster 150-F-12.
GASOLINE LANTERN — Coleman, 2, mantle type. Char. 0994-J.
GUN CABINET—Or book case, maple. Char. 1019-M.
HOME—For ¾ Dalmatian, year old female. Hill. 2033.
KITCHEN SET—With chrome finish. Char. 1915-R, after 6 p.m.
LATHE—Metal, could swap useful items. Glen. 0595-M.
MOVIE CAMERA—Cine-8 model Eight-60. Glen. 6023-R.
PERSON — To tie homemade quilt. Char. 0254.
PIANO KEYS—Or silent practice piano keyboard. Glen. 5720-M, after 6 p.m.
PING PONG TABLE—Standard size. Mon. 3221.
PIPE DIE SET—Ratchet type, for 1¼", 1½", 2" pipe. Gen. 5562-W.
PLAYPEN—With pad, will repair, reasonable. Char. 1670-M, after 6 p.m.
PORTABLE RADIO — Give make, age, price. Char. 1049-J.
POWER SAW—Portable, 6", 7" or 8", give model, price. Char. 1049-J.
RIDE—For 2 girls from west side of Conesus Lake to KP. Glen. 0426-R.
RIDE—From Albion to H-E, hours, 8-5. Albion 1063-R or H-E 493.
RIDE—From Atlantic Ave. and Landing Rd. to H-E, R-trick. Cul. 6637-W.
RIDE—From Avon to KP and return, 8-5 p.m., Monday through Friday. Avon 4803.
RIDE — From Canandaigua Lake, west side, to CW and return, for week ending Sept. 15, hours 7:30-4:30. Glen. 2993-M.
RIDE—From Chili Ave.-Hinchey Rd. to KO-CW and return, hours 8-5. Gen. 6629-R.
RIDE—From Clifford Ave. & St. Paul St. to KP and return. Mrs. Jack Kleisley, Glen. 0480-J.
RIDE—From Culver Rd. and Hartsdale Rd. to DPI and return, 8-4:45. Cul. 1139-J or KP Ext. 2424.
RIDE—From Douglas Rd., Chili Ave. section to H-E and return. Gen. 0671-J.
RIDE—From east side Conesus Lake to KP and return, 8-5 p.m., for month of August. Glen. 0426-R.
RIDE—From Gilbert Dr. near Empire Blvd. and Culver Rd. to KP and return, 7-3 p.m. Cul. 3332.
RIDE—From Penfield Center Rd. to CW and return, hours 7:35-4:35. HAMltn 4279.
RIDE—From Victor to KP and return, 8-5 p.m. KP Ext. 6253.

WANTED

RIDE—From 340 Oak Ridge Dr. off Pine Grove Ave. to H-E and return. Char. 2350-J, after 5 p.m.
RIDE—From 1231 Woodhull Rd., Webster, vicinity Nine Mile Pt. Rd. and Lake Rd., to KP and return, 8-5 p.m. Lyle Denny, KP Ext. 2116.
RIDE—From 2192 Ridge Rd. E. near Culver Rd. to KP and return, 8-5 p.m. Ruth Meitzler, 2192 Ridge Rd. E.
RIDE—Or car pool from Ontario Center Rd. between Penfield Rd. and Macedon Center Rd. to KP and return, 8-5 daily. J. C. Eaton, KP Ext. 3266.
RIDERS—From Honeoye Falls or Rush to KP or KPW, Monday through Friday, 8-5 p.m. Honeoye Falls 502-F-3.
RIDERS—From Newark to KP and return, via Monroe Ave. and St. Paul St., 7:30 a.m. to 4:30 p.m. Newark 136-W-1.
RIDERS—From Webster, N.Y., to CW or vicinity and return, hours 8-5. Webster 208-F-22, after 6 p.m.
RIDERS—418 East Lake Rd., Canandaigua to H-E, 8 to 5, for July and August. B. Gavert, H-E Ext. 616.
RIDERS — From vicinity Spencerport to KP and return, 8-5 p.m. 257 Whittier Rd., Spencerport 340-F-2.
SEWING MACHINE — Used, treadle type. 118 Peck St.
TRICYCLE—With chain drive. Char. 2297-J.
TRUCKING — Odd jobs with 1½-ton truck. Gen. 5247-R.
WARDROBE TRUNK — Medium size. Hillside 2221-J.
WOMAN—To share her apartment with KP Medical Dept. nurse and school-age son. J. Pratt, KP Ext. 2541.

APARTMENTS WANTED TO RENT

APARTMENT—Or flat, 4-5 rooms, with utilities, for immediate occupancy. Gen. 3228-R.
By working couple in KP section, utilities, parking, before September. Char. 3454-W before 7 p.m.
Or flat, furnished or unfurnished, by Aug. 1, \$65 maximum. Gen. 3522-R.
Or flat, 4-5 rooms, with all utilities, for young employed couple. KP section desired but not necessary, \$75 maximum. LOcust 6957 between 9 a.m. and 6 p.m.
Three rooms, private bath, KP section preferred, for employed couple, by Sept. 1. KO Ext. 4224.
Four rooms, with heat, Dewey or Lake section, by 3 adults. Glen. 6822-W.
STUDIO APARTMENT—Can pay up to \$45 per month. Baker 8503.
Unfurnished with two bedrooms, first floor preferred in residential area, for veteran and expectant wife. Joe Wilson, H-E Ext. 222.

FOR RENT

APARTMENT—Furnished, studio and kitchenette, utilities, oil heat, use of phone, 5 minutes to KP, middle-aged lady preferred. Glen. 4687-J.
APARTMENTS—Two-room, \$65; three-room, \$75, remodeled. 123 Warner St., Glen. 4693-J.
CABIN—By week or season, on LeRoy Island, Sodus Bay. 179 Mitchell St.
COTTAGE—Furnished, small, boat included, Black Lake, 20 miles to 1000 Islands. Robert A. Hutchinson, Rossie, N. Y.
COTTAGE—Will sleep 8, all modern conveniences, Aug. 5 to 12, good hay fever climate. Eagle Bay, Fourth Lake, N.Y. Char. 1370-W.
COTTAGES—Thousand Islands, Chipewa Bay, waterfront, boats, gas, electricity, refrigerators. 12 Bartlett St.
ROOM—And meals, all conveniences, girls preferred, Hawk-Eye Section. 50 Selye Terr., Glen. 3362-W.
ROOM—Large, furnished, suitable for 1-2, gentlemen preferred, breakfast optional, \$6 per week, on bus line. 1284 Mt. Hope Ave.
ROOMS—Bedroom and living room, furnished, for 1 or 2 persons, breakfast optional, on Park bus line, available Sept. 1. Mon. 6215-J.
ROOMS—Two, large \$8, small \$6, use of phone, girls preferred. Glen. 0215-W evenings.

WANTED TO RENT

GARAGE—Vicinity Emerson and Backus Sts. S. Speciale, 175 Emerson St., Glen. 6137-J.

SWAPS

RADIO TUBES—139 Intercom and paging equipment, dictaphone electronic recorder, radio instruments, 15,000 envelopes. Mon. 2420-M.

LOST AND FOUND

FOUND—Car key, on north platform. Bldg. 46. KP Ext. 2194.
LOST — Blue-green zircon ring with small diamond on each side, on Tuesday, July 11, or Wednesday, July 12, vicinity of KO. Hill 1460-W.
LOST—Gold bracelet, "Jane" engraved on plate. H-E Ext. 269 or Cul. 0541-J.
LOST—Gold watch, elastic band, vicinity of Palm and Rand Sts., on 7/13/50 at noon. KP Ext. 2569.
LOST—Pair of safety glasses, prescription ground, between 8th floor, Bldg. 23, KP and W. Hanford gate, July 7. G. Rugg, KP Ext. 2161.
LOST — Parker 51 pen, gray with gold cap, between Bldg. 59, KP, and bus stop, 5 p.m., July 11, reward. Mrs. Miller, Room 224, Bldg. 59, KP Ext. 7286.
LOST—Suitcoat, man's, gray glen-plaid, in lobby of Bldg. 28 gym. Cul. 5634-J.

Bldg. 12 Remains Unbeaten

Bldg. 26 and Bldg. 12 girls posted victories last week in the KPAA Girls' Softball League on the Bldg. 41 diamond. By handing the Kodakettes their first setback, Bldg. 12 assumed the league leadership.

Bldg. 26 tagged Bldg. 25 with a 13-4 setback as Bunny Ellsworth, Bldg. 26, garnered three hits, in addition to getting a base on balls her fourth time at bat. Catherine Towne, Bldg. 25, hit safely three times for a perfect night at the

plate.

The hitting of Jerry Cole featured an 18-8 win by Bldg. 12 over the Kodakettes. Jerry lined a drive to center which scored two runs but was thrown out at home trying to stretch the blow into a homer. Standings:

	W	L	Pct.
Bldg. 12	2	0	1.000
Kodakettes	2	1	.667
Bldg. 26	1	2	.333
Bldg. 25	0	1	.000
Bldg. 65	0	1	.000



Action — KPAA Girls' Softball League games never lack for action. The above scene was snapped in a game last week as Eleanor Reis raced across the plate to score for the league-leading Bldg. 12 team. Catcher Lee Carter of the Kodakettes awaits the throw. Evelyn Mank, left, approaches for her turn at bat. Bldg. 12 won, 18-8.

Dept. 61 Thumps Production, 8-4

In the only game played in the H-E Intraplant Softball League last week, Dept. 61 defeated Production, 8-4. Don Kausch and Bob Hicks with two hits apiece paced Don Argenbright's team.

KP Netters Gain on CW

Kodak Park's rampaging netmen took a commanding lead in the Rochester Industrial Tennis League race last week by defeating Kodak Office, 6-0, as singles play opened the second half schedule.

Camera Works lost ground to the loop leaders as the Balcos took a 4-2 decision, Hawk-Eye defeating Roch. Prod. by the same margin. The Cameramen, playing without the services of John Hanna and Dave Flint, posted their only two wins as Ben Morgan and Ed Tafel defeated their opponents by identical 6-4, 7-5 scores.

Jack Englert paced the Kaypees to their shutout triumph, upending Jim Archibald in a tough 3-set battle, 3-6, 7-5, 6-1. Standings:

	W	L	T	Pts.
Kodak Park	19	2	1	9 12
Cam. Works	14	7	1	6 15
Hawk-Eye	11	10	1	4 17

KPAA TENNIS LEAGUE			
	W	L	T
Ind. Eng.	19	5	8
Bldg. 65	16	7	5
Mfg. Expts.	16	8	3
Res. Lab	12	12	1

Results last week:
Ind. Eng. 3, Syn. Org. Res. 0; Syn. Org. Res. 3, Bldg. 30 1; Bldg. 65 3, Engineering 1; Ind. Eng. 4, Res. Lab 0.

Softball Standings

KPAA RIDGE NOON-HOUR			
	W	L	T
Bears	2	0	0
Royals	1	1	0
Orioles	1	1	0
Wings	0	2	0

KPAA LAKE AVE. NOON-HOUR			
	W	L	T
Dodgers	3	0	2
Yankees	2	0	2
Birds	1	3	0
Giants	1	4	0

CW SHOP LEAGUE			
	W	L	T
Cases	3	0	3
Bantams	3	1	2
Medalists	3	1	1
Printers	3	1	0
Cines	2	1	0

KP Pitchers Top CW For 10th Straight Win

Clarence Auten won five matches as Kodak Park turned back Camera Works, 16-9, in the Industrial Horseshoe League last week. Al Cope posted a 4-and-1 record. It was the league-leading Kaypees' 10th win in as many outings. Cope and Charlie Kester paced the Park shoemen to their ninth win, a 14-11 decision over Gleason's.

Major Loop All-Star Game, Dusties-Major Tilt Slated Friday; First-Place CW Tops Bond, 4-2

Tomorrow night's all-star card at the Lake Ave. ballyard shapes up as a genuine 14-karat offering.

In addition to the glitter game originally scheduled, the nightcap will see the Kaypees and KP Dusties crossing bats once again. In their last two meetings prior to Tuesday the two teams battled to 10-inning deadlocks.

All-star aggregations from the Major Industrial League's National and American divisions will clash in the 8:15 game.

On hand as a featured guest will be Phyllis Roderick, queen of the 1950 New York State Fair.

The all-star card winds up regular-season activity in the Majors. Playoffs involving the top two teams in each division are tentatively scheduled to start next week.

Mike Farrell's Dusties won, lost and tied one last week. The 2-2 10-inning stalemate with the Kaypees July 20 was almost a duplicate of their previous 1-1 tie game. Frank Giordano held the Majors to 7 hits, but Bud Oister gave the Dusties only 5.

Stollery Comes Through

The Dusties got their two tallies in the first frame as Don Stollery scored Bill Finucane with a booming triple, then countered himself on a wild pitch. Thereafter Oister was invincible.

In the fourth Leo Gallagher's lads knotted the count as Tom Castle and Herb Morris singled. Castle scored on Hack Kremble's hit, and Bill Reynolds' long fly to left brought in the tying run.

Giordano twirled a three-hitter against Grafex as the Dusties waltzed to a 13-3 win. Art Steele and Jack Finucane each collected 3 for 4.

In the Hickok game Joe Snook pitched five-hit ball and belted a long homer over the rightfield fence, but the Dusties lost, 6-5.

Camera Works strengthened its first-place grip in the Rochester Industrial League July 21 by nipping Bond's, 4-2, behind the 4-hit pitching of Howard (Hap) Chand-

Gunn's Golfers Repeat at H-E

They rang down the curtain on the H-E Men's Twilight Golf League last week with the Mongrels taking the overall honors in the two divisions of the 16-team loop.

This year's title makes two in a row for Mike Gunn's linksmen. The champs repeated the hard way, being the low handicap club in the league. Joe Garafol held down the number one spot, carrying a 2 handicap during most of the year. He was followed by Gunn with 8, Bill Short 5 and Art Simmons, 6. Alternate Pete Pero held a 5 spot.

Final standings:

Mongrels	120	Supervisors	89½
Trappers	115½	Personnel	83
Production	107	Dept. 54	80
Accounting	102½	Eng. No. 2	77
Estimators	102	Dept. 44	74½
Duffers	97½	Eng. No. 1	72½
Woodsmen	96	Inspectors	67
Painters	93	Varieties	63

EK Racqueteers Busy

Rochester Industrial Tennis League members from all Kodak divisions are taking part in the annual men's and women's singles and men's doubles tennis championships at the Tennis Club of Rochester.

The competing roster includes Jack Englert, Cliff Schmidt, Ike Shynook and Doug LaBudde of KP; Ben Morgan, Dave Flint, John Hanna and Ted Mosher of CW; Phil Michlin and Irv Michelson, H-E; and Ray Okey, Margaret Michlin and Doris Minges of KO.

Bldg. 12 Golf

McAndrews-Campbell	10
Howcraft-Short	9
Parker-Crocetti	8½
Wilgus-Wilder	6½
Walters-Wilson	6½
Salt-O'Rourke	5
Louck-Schoenmaker	4½
Clegg-Long	4
Delcour-Swanton	3
Bodine-Bourey	3



Red Warner of Kaypees lays down a bunt in game against KP Dusties.

ler. In the West Side Industrial the Cameras suffered their second

Last Call for Cleveland

Today is the last day to sign up for the weekend baseball excursion to Cleveland. "All unsold tickets must be returned to the Cleveland baseball club Friday," John Doyle, CWRC director, explained in issuing a last-minute reminder. Reservations may be made at the recreation club offices at KP, CW, H-E, KO and DPI.

The attraction is the Red Sox-Indians doubleheader at Cleveland Municipal Stadium, Sunday afternoon. The special train leaves Rochester at 7:30 a.m. July 30 and arrives back in Rochester at 11:25 p.m. that night. Total cost of the trip, including a lower reserved grandstand ticket to the game, is \$13.50. For children under 12, \$7.50.

Branch Regains KO Loop Lead

Rochester Branch regained first place in the KO Softball League last week, trouncing Repair, 8-3. Fran Biggs clouted a home run for the winners. Ralph Hagen hurled for the Bombers.

Pat Lynch's Shipping nine eked out a 4-3 win over the Penpushers as Bernie Rausch singled across Rube Lynch with the winning marker in the bottom half of the seventh.

Paul Mastrella bested Fred Powers of the losers, allowing only 4 hits. The Shipping moundsman also whiffed 5. Norm Hyldahl, Penpushers' shortstop, starred in the field. Standings:

	W	L	T
Branch	6	3	3
Repair	5	3	2

loss, bowing to Laundry, 7-4.

Major Industrial League standings through July 23:

	American Div.		National Div.	
	W	L	W	L
DPI	10	1	Ritter	11 1
Delco	10	1	KP Dusties*	7 2
Hawk-Eye	6	5	Kaypees*	7 3
Products	6	6	Balcos	8 4
Stromberg	4	8	Police	4 8
Laundry	4	8	Gleason	3 10
Kodak Office	0	11	Graflex	2 7
			Hickok	2 9

* Played 2 tie games.

F. D. 5 Clinches First-Half Flag

A hard-hitting F.D.5 team sewed up first-half honors in the KPAA Kodak West wheel last week by registering two victories. They defeated the Renegades, 6-1, and walloped Syn. Chemistry, 13-1. Howie Terhaar banged out a 2-run homer against the Renegades, while Bob Visner's three doubles told heavily against the Synthetics.

Wood Cellulose also racked up two wins, downing Syn. Chem., 8-1, and trouncing the Renegades, 11-0, as Walt Schattner and Bill Gandy homered. Standings:

	W	L	T	Pts.
F. D. 5	9	4	0	18
Wood Cell.	7	7	0	14
Renegades	6	8	0	12
Syn. Chem.	5	9	0	10



Wrong Number — Cliff Heir, KO Credit, looks with amazement at Lake Shore Country Club's 9th hole flag after having slammed the ball for a hole in one. Irony of it is that Cliff was driving for the 10th hole. Partner Glen Blinde, also of KO Credit, watched Cliff hit the ball off the toe of his club.

Here are Some Fish Tales . . .



... With Proof — There's no doubt about it, these Kodakers can tell fish stories and make them stick. At left is Bill Gregory, Bldg. 57, Kodak Park, with the three wall-eye pike he and Pat Lynch, KO, caught at Sodus Bay. The three fish averaged 4 pounds apiece. At right is Les Brydges, KP Garage, who is displaying the nice catch he pulled in at Charity Shoals, not far from Cape Vincent on Lake Ontario.

SEC. 34-66 P. L. & R.
U. S. Postage
PAID
Permit 6
Rochester, N. Y.

KODAKERY
EASTMAN KODAK COMPANY
Rochester 4, N. Y.
Return Postage Guaranteed