

LYCEUM
THEATRE

M. E. WOLFF
MANAGER

EXCLUSIVELY HIGH
CLASS ATTRACTIONS



FORKS & FINGERS

FINGERS came before forks—time was when people fished tempting morsels out of the common dish without the formality of using a fork or spoon. Nowadays none of us would care to eat at a table where such things were done. Still, so nearly universal is the practice of dipping chocolates with the fingers, that very few people ever saw or tasted any other, until we made them.

STACY'S FORKDIPT CHOCOLATES

are dipped on the end of a fork without the fingers of the operator even touching the melted chocolates. They are made throughout from the highest grade of material, and have a more exquisite flavor than hand-dipped chocolates.

¶ If your confectioner does not have them send to-day for an elegant 3-layer 20-ounce box fresh from our kitchens. \$1.00 express paid. Half size box, 50c. express paid.

O. T. STACY CO..

168-176 Clinton Ave., N., Rochester, N. Y.

Hotel Empire

—Broadway at 63rd Street—

NEW YORK CITY

IN THE VERY CENTRE OF EVERYTHING
Subway and Elevated R. R. Stations One Minute

Five
Minutes
walk to
40
Theatres
and all
Famous
Shops



ALL
Street
Cars and
5th Ave.
Motor
Busses
Pass our
Door

HOT AND COLD RUNNING WATER IN EVERY ROOM

Rooms (single)	\$1.00 per day up
Rooms (detached) Bath	1.50 per day up
Suites Private Bath	2.00 per day up
Suites Private Bath	3.50 per day up

Restaurant noted for its excellent cooking
efficient service and Moderate Charges.

We also offer you the most delightful Hotel
Accommodations at very moderate Rates.

SEND FOR FREE GUIDE TO CITY

W. JOHNSON QUINN, PROPRIETOR



Diamond Tires

Diamond Tires

are made in
all types-all
sizes and to
fit every style
of rim, in several
treads, but only
one Quality—
the highest.

The Diamond Rubber Co. of N.Y.

422 Main Street East

Rochester, N. Y.

THE PROGRAM OF THE PLAY

Thursday, Friday and Saturday, Sept. 19-20-21. Matinee Saturday.

HENRY MILLER

In

The Rainbow

A Comedy in Three Acts

By A. E. Thomas

YOUR WIFE

will escape much of the drudgery of house-keeping if she is provided with one of these up-to-date savers of time and labor. Ask her!

THE GRAVES STEP - SAVING KITCHEN CABINET

Saves

{ STEPS
LABOR
TIME
WORRY

Its real usefulness is so great in comparison with the small cost that no one can afford to do without it.

\$8.95 for this **KITCHEN CABINET**



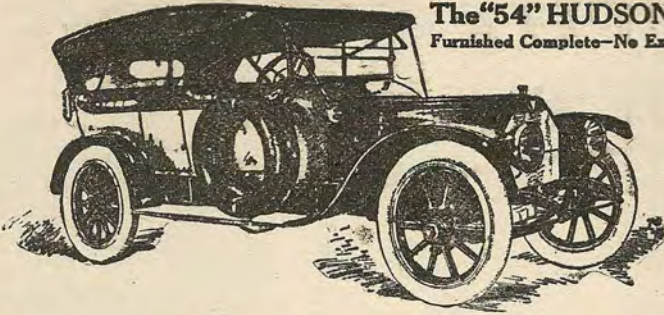
Made of well-seasoned maple, with natural finish. Is 55 inches high, with 26x44 top. Base contains molding board, flour bin and two drawers. Top has six drawers.

See large assortment of styles in our model showroom, basement department
PRICES FROM \$4.95 TO \$35.00

LOW PLAIN
FIGURE PRICES

H. B. GRAVES
78 STATE ST. ROCHESTER, N.Y.

HOMES FURNISHED
FROM PANTRY TO PARLOR



The "54" HUDSON—A Six
Furnished Complete—No Extras to Buy

Can 48 Experts Fail?

They Have Done Their Best in the New HUDSONS

By combining the experience of 48 engineers, failure is minimized in the *New HUDSON* cars.

Experiment has been eliminated. The errors due to lack of experience and lack of knowledge have been left out of these cars.

These 48 engineers received their training at 97 different factories. They came here from France, Italy, Germany, England, Belgium and Austria. Combined they have had a hand in building 200,000 cars. They joined in building the *New HUDSON* and offer the "37" as their four-cylinder masterpiece and the "54" HUDSON, the Six, as the Master of all automobiles, regardless of cost, power or make.

Not a One Idea Car

Individuals have done great work. Much advancement has been shown by different designers. But in all cars built under that method, there is a limit, for the designer, no matter how experienced or clever he may be, is bound to fall short of perfection. By combining the experience of 48 men, some man in the group is always able to make good the shortcomings of his fellows.

The *New HUDSONS* show, therefore, cars that have been built on a new idea. No similar group of men in size or experience ever before combined in building an automobile and by the same token no automobile ever built is so nearly developed along the right lines in all details as are the *New HUDSONS*.

Electric Self-Cranking—Electrically Lighted

Examine Them Now

Other cars may appeal to you because of some distinctive feature. But the chances are that every distinctive feature is also on the *New HUDSON* but is not distinctive there because it is in combination with other details equally as important. You buy the HUDSON car not because of any one idea but because it has all of them.

Can you afford to overlook such an automobile?

There are two models. HUDSON cars are furnished in two chassis—the "37," a four cylinders and the "54," a six.

The equipment is identical in both cars,

consisting of an electric cranking device, electric lighting generator and ignition system, known as the Delco Patented.

The equipment is complete in every respect including top, rain vision windshield, demountable rims, speedometer, clock, tools, etc.

The "37" has a 118-inch wheel base.

The "54" has a 127-inch wheel base.

The "37" is offered with either a Five-Passenger Touring Car, Torpedo or Roadster body at \$1875.

The "54" with either Five-Passenger Touring body, Torpedo or Roadster is \$2450. With the Seven-Passenger body it is \$2600. These prices are all f. o. b. Detroit.

See the Triangle on the Radiator

The Gillis-Baird Motor Co.

180 Clinton Ave. South

Washington Square

ELECTRICS OF COURSE

If they didn't pay we wouldn't use
them ourselves, nor would we recom-
mend them to you.

Rochester Railway and Light Company

PROGRAM CONTINUED

THE CAST



Neil Sumner	Henry Miller
Edward Fellows	Charles Hammond
Nicholas Hollins	Robert Stowe Gill
William Mortimer	H. Conway Wingfield

FOLLOWING THE PERFORMANCE

The Odenbach "Hofbrauhaus"

Excellent Music by the Rochester Ladies' Orchestra

14-16-18-20 SOUTH AVENUE

TWO DOORS FROM MAIN

PHILLIPS' COCOA THE COCOA
DIGESTIBLE WITH A RICH
CHOCOLATE FLAVOR



F. L. MAURO & CO.

LADIES TAILORS AND DRESSMAKERS

Make a call and let us show you our advanced fall styles and Samples
We are sure you will be pleased.

Bell Phone

194 MAIN STREET EAST,

3rd FLOOR GLENNY BUILDING

WE KNOW HOW

The American Union

Laundry Company

368 Main Street East
197 Clinton Avenue North
213 Monroe Avenue
77-79 South Avenue, Corner
Acqueduct

Phones :

Home 3994

Bell Main 2287

Sweeper-Vac \$10.00

The Sweeper-Vac is in some house on every street ;

There's no question about it, it can't be beat.

The price is low and it gets the dirt fast,

It's come to stay and will forever last.

Guaranteed to last twenty years,
free demonstration given in your own home.

Call or write,

R. J. STOWE

27 S. Clinton St. Bell Phone 3057 Main

LuNette
SHOP

332 East Main Street
Rochester, N. Y.

This is the home of the famous

**LuNette
Corsets**

without doubt the most stylish and comfortable corsets made. This brand is copyrighted by us and sold only by this shop. Every pair is carefully fitted by an experienced corsetiere. LuNette corsets are moderately priced. A pair \$3 to \$25.

**French
Undermuslins**

French undermuslins are also a feature of the LuNette stocks. One, two or three piece garments of the finest materials, daintily trimmed with the prettiest laces, embroideries and ribbons, some made entirely by hand are shown at moderate prices.

Single garments from \$1 to \$15

Sets from \$10 to \$60

**Outer
Garments**

The styles we show in this department may not be seen anywhere else in Rochester. The woman who looks for a Suit, Coat, Dress or Waist out of the ordinary may expect to find it here. The large number of different models will make it possible for persons of the most varied tastes to choose the one that is most becoming.

Suits, \$25 to \$75

Coats, \$15 to \$65

Dresses, \$10 to \$75

Waists, \$1 to \$25

SPACE 2 Inches High
 5½ Inches Wide
 24 Inches Long

For Your Important Papers
AT \$3.00 PER YEAR

The New Safe Deposit Vault at 25 State Street, is now Ready
 Open 9:00 to 4:00

Union Trust Co.

PROGRAM CONTINUED



James Judson	Joseph Allenton
John Carpenter Gilmore	Daniel Pennell
Bennett	George C. Pierce
Mrs. Ruth Sumner	Edith Barker



Trailing Arbutus Talcum

The Powder that has met with immediate approval by discriminating people. The delightful, refreshing aroma of the fields and woodlands in Spring set the mark of individuality and distinctiveness upon

Woodworth's Trailing Arbutus Talcum

Fineness and pure texture of powder unexcelled.
 Ask the girl behind the toilet counter for a trial sample.

Woodworth PERFUMES
 SINCE 1855

Makers of the famous perfume—BLUE LILIES



Your Attention is Called to the Well Known Brand of

GOLD SEAL CHAMPAGNE

Pronounced by Connoisseurs to be
Superior to Any Wine on the Market.
¶ In Evidence at All Social Functions
and Served at all Leading Clubs and
Cafes. ¶ After the Theatre Try a
Bottle at Your Favorite Cafe.

SOLD EVERYWHERE

URBANA WINE CO.
URBANA, N. Y.

This Institution

**Offers to you the advantages
of its facilities**

Having ample resources, representative
Directorate, conservative management

We Have Money to Loan on Bond and
Mortgages, or on Approved
Collateral

We Have the Largest and Best Equipped
Safe Deposit Vaults in the City

RESOURCES. - - \$22,000,000
CAPITAL AND SURPLUS, \$1,600,000

**Rochester Trust &
Safe Deposit Co.**

Main St. West cor. Exchange St.

One of the Good Things Made in Rochester is

Whittles

BITTER SWEETS
Main and Water Streets

KARNES

Ladies Hatter

FALL OPENING

Monday, Tuesday and Wednesday
September 16, 17, 18

No Cards

No. 135 Clinton Avenue South



Hotel Seneca

Rochester's Leading Hotel

After the performance visit our newly decorated and refurnished Pompeian Room. A Delightful Menu, Dainty Small Tables, Quick Service and Special Music.

A. B. SANDERL, Manager

PROGRAM CONTINUED



Betsy Sumner	Ann Crewe
Cynthia Sumner	Ruth Chatterton
Jane Palmer	Vera McCord
Elsie Davis	Ethel Martin
Therese	Ethel Loyd

Daniel's
"SMART-SHOP"

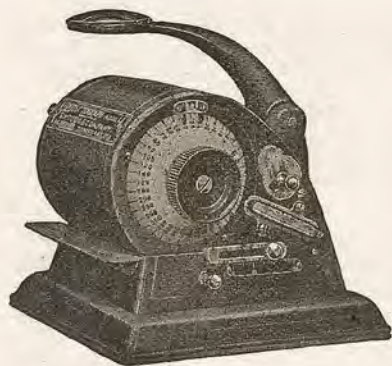
We desire to announce that our
Fall and Winter showing of
models in

Exclusive Imported and Domestic
Suits, Coats, Wraps, Dresses
Waists and Skirts

is now ready for your inspection

12 Clinton Avenue South

Daniel's Smart Shop



"The Machine that Todd Built"

There are on the market today about a dozen different devices for protecting checks against alteration—but only one Protectograph. It is a patented device, made only by G. W. Todd & Co. The word "Protectograph" is a trademark, and can be applied only to machines built by Todd.

At least nine-tenths of all the check protectors sold today are Protectographs, patented, manufactured and guaranteed by Todd.

The best as well as the cheapest check protector is the

Protectograph

On the market 12 years. Nearly 150,000 in use, adopted by U. S. Treasury, by most of the city, county and state treasuries throughout the country, by over nine-tenths of the banks, and by more than 100,000 leading business houses in all lines. It protects the biggest bank accounts in the world—and is the only form of protection that has never been successfully altered.

G. W. TODD & CO.

*Patentees and Sole Manufacturers the
"Protectograph"*

*Largest Makers of Check Protectors in
the World*

1155 University Avenue, - Rochester, N. Y.



KITTY GORDON
In "The Enchantress,"
September 26, 27, 28 and Saturday Matinee

Fall Fashions

This week, beginning Wednesday, September 18th, we make
OPENING DISPLAYS
of Fall Fashions.

Sibley, Lindsay & Curr Co.

GANSS

BROS. & CO.

"READY TO WEAR"

FURS



115-118 BECKLEY BLDG.
27 CLINTON AVENUE S.
Opposite SENECA HOTEL
Home Phone 1351 Stone

Alliance Bank

MAIN ST. E. AND STONE ST.

IN THE CENTER OF THE
RETAIL DISTRICT

RESOURCES

OVER \$8,500,000.00

Much of our new business comes through the *influence of our customers.*

Young business men will find the Alliance Bank a *valuable ally.*

SPECIAL DEPARTMENT FOR WOMEN

AFTER THE PLAY VISIT



POWERS HOTEL

RATHSKELLER
AND
ARBOR ROOM

where Specialties of Every
Kind are Served

FINE ORCHESTRA

FOR BEST RESULTS

Our New Ideas Have Proven Good



233 Powers Building

GEO. V. KONDOLF
LOUIS J. WEHLE

ROCH. STONE 7072
BELL, MAIN 2537

PROGRAM CONTINUED

SYNOPSIS OF SCENES

ACT I—Neil Sumner's Apartment, New York.



The Art Print Shop

Printers and Designers of
Catalogs, Booklets and
Stationery

Rochester Phone, Stone 6211

Sibley Block.

346 Main St. E.



An Exclamation Point.

Are your teeth giving you trouble? A little care now will save trouble and expense later. In dentistry it is especially true that "a stitch in time saves nine."

The small cavity if neglected means a lost tooth; filling it now means less cost and less risk. Perfect crown and bridge work our specialty.

Unless you can masticate properly, indigestion results—good teeth insure perfect digestion. Let us figure with you on the dental work you need

DR. FRED'K J. R. DEAN

Home Phone 5203 Stone

210-212 Mercantile Building

Young's Shell Oyster & Fish Market



ALL KINDS OF SEA FOOD IN SEASON

Lobsters, Scollops, Shrimps, Etc.

114 Main St. West, near Plymouth Ave. North

Bell Phone 3985 Main

Rochester Phone 2265

Registered and Licensed in the State of New York

Home Phone 2163, Bell, Main 4790

DR. HARRY LEISER

New York Graduate

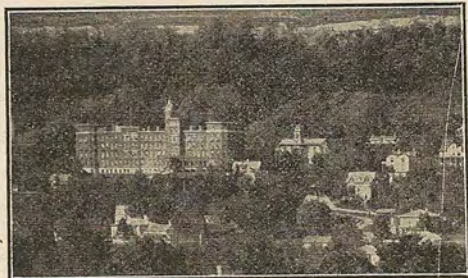
CHIROPODIST

All Troubles of the Feet Painlessly
and Antiseptically Treated.

Located at Turkish Bath Hotel

44 North Fitzhugh St.

The Jackson Health Resort



Dansville, N. Y.

One hour, and thirty-five minutes
by 4:40 P. M., through train on
the Erie Railroad.

SHOULD BE CONSIDERED

A most beautiful SUBURB of ROCHESTER, for recreating and
HEALTH PURPOSES.

So easy to get there. So delightful while there. Everything ALL RIGHT.

Table, Service, Baths, Physicians. Good Company.

Just what you need for a WEEK END ANYWAY.

Write for Literature

J. ARTHUR JACKSON, M. D.

Secretary and Manager

For Space Apply at
Box Office

The Authentic Antique Shop

45 East Avenue



Will make a
specialty of
restoring and
refinishing
antique
furniture.

PROGRAM CONTINUED



ACT II—Long Island Home of Neil Sumner.

Japanese Art Shop

433 MAIN ST. EAST

We are newly opened and
cordially invite you to in-
spect our beautiful display of
Art goods imported direct
from Japan.

After the Play, Visit the

Whitcomb House

Cafe and Rathskeller

New Entrance, Clinton Ave. S.

Excellent Menu and Music

Chicken and Lobster

Dinner Served Sunday

Evening, 6 to 8:30

— PROF. MONK'S ORCHESTRA —

Tuesday, Wednesday, September 24th and 25th
Matinee Wednesday

Werba & Luescher Present the Funniest of all American Comics

Eddie Foy

In His Smashing Musical Comedy Success

“Over The River”

Direct from Six Months at the Globe Theater, N. Y.

Nights 50c to \$2.00

Mat. 25c to \$1.50

Seats Friday

September 26, 27, 28, Saturday Matinee

GALA ENGAGEMENT

JOS. M. GAITES PRESENTS

KITTY GORDON

(THE BEAUTIFUL)

In Victor Herbert's Masterpiece

THE ENCHANTRESS

This wonderful opera comique, which ran for five months in New York and received the endorsement of the press and public, has been a romance of delight to lovers of bewitching melodies, captivating dancing, delights to the eye, and sparkling mirth. There's a stellar cast, including Nellie McCoy, the famous dancer, gorgeous production, Victor Herbert's musicians on tour, and a large singing beauty chorus.

Prices, nights, 50c to \$2.00. Matinee, 25c to \$1.50. Seat sale Tuesday 24th

ROCHESTER 310

PHONES :

BELL MAIN 375

To ride to and from the Theater in a nice conveyance
will add to your evenings pleasure. If you want the
best to be had call the "Rochester."

ROCHESTER TAXICAB COMPANY
NO TAXIMETERS

SEAMLESS TIRES

GUARANTEED FOR 5,000 MILES

SELLECK AUTO EQUIPMENT CO. 360 Main Street East

PROGRAM CONTINUED



ACT III—The Villa Marchese at Mentone. A year later.

Note:—The curtain will be lowered for a few seconds in the course of
Act I, to indicate the passing of several hours.

"THE HOUSE OF MCGREAL"

Pure Wines and Liquors

23 North Street



**GRAND
IMPERIAL
SEC**

A most delicate and
pleasant aroma Cham-
pagne, equal to the best
imported wines.

GOLD MEDAL
Wherever Exhibited

**GERMANIA
WINE CELLARS**

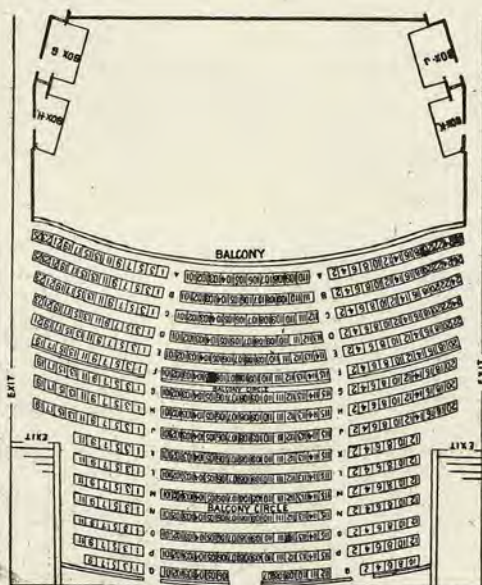
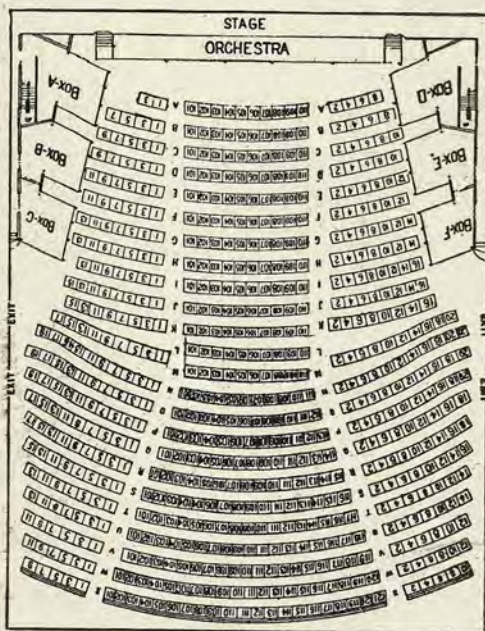
HAMMONDSPORT, N. Y.

For Sale at all First Class Cafes and
Dealers



EDDIE FOY
IN "OVER THE RIVER."

DIAGRAM OF LYCEUM THEATRE SHOWING EXITS



LYCEUM THEATRE COMPANY.

M. E. Wolff, President.
Rufus K. Dryer, Vice-President.
F. W. Zoller, Secretary and Treasurer.

DIRECTORS.

Wm. F. Balkam,
F. W. Zoller,
B. E. Chase,
Rufus K. Dryer,
Klaw & Erlanger,
M. E. Wolff.

Business Staff.

M. E. Wolff, Manager.
W. R. Corris, Jr., Representative.
Louis Brandt, Ticket Agent.
Fred I. Reinisch, Musical Director.
John Tierney, Stage Manager.
Chas. Heitsman, Master of Properties.
J. T. Wood, Advertising Agt.

HOUSE NOTICES.

BOX OFFICE OPEN 9 A. M. TO 9 P. M.

Matinees begin at 2:15, and evening performances at 8:15 promptly.

Seats for this theatre may be obtained by mail, telegraph or telephone No. 135, and will be held until such time as agreed upon when order is given. If not called for then, they will be sold.

Ladies' Parlor and Toilet Rooms. Orchestra Circle, right of Main Entrance.

Smoking Room and Gentlemen's Parlor and Lobby, first door to right. Smoking positively forbidden in any part of the Lobbies of this Theatre.

Free Check Room for cloaks, coats and umbrellas in Lobby, left of Dress Circle Entrance.

Wet Umbrellas not allowed in Orchestra Circle, Orchestra or Balcony.

Parties finding lost articles in any portion of the Theatre, will please leave them at the Box Office.

No fees of any kind allowed to ushers or attaches of this Theatre.

Patrons will please report to the manager, in person or by letter, instances of inattention or misdemeanor on the part of the attaches of this Theatre.

Special attention is called to the safety of the Lyceum Theatre. It is the only Theatre in the city located on the ground with exits on all four sides, provided with an asbestos curtain covering entire proscenium, so that in case of fire on the stage it would be impossible to communicate to auditorium. The Balcony and Gallery have iron stairs on both sides, leading to the walk, which together with main entrance built of iron and brick, will be opened at the close of each performance, or sooner if necessary. The side doors in the Orchestra Circle will also be opened at the close of every performance.

The asbestos or fire curtain will be raised upon the entrance of the orchestra. The stage is equipped with water curtain sprinkler system, stand-pipes and coils of hose, connected directly with the Holly water service.

Sanitary conditions maintained by use of automatic disinfecting appliances of Rochester Germicide Co.

RED LIGHTS IN THIS THEATRE INDICATE EXITS

Rochester Made Pianos used in this Theatre and are manufactured by Goetzmann & Co., No. 178-180-182 Clinton Avenue North.

BOTTLED AT THE BREWERY

MONROE



KING
OF ROCHESTER BEERS

— PHONES —

HOME: STONE 815 BELL: MAIN 1000

MONROE BREWING COMPANY
ROCHESTER, NEW YORK