

LYCEUM THEATRE

M. E. WOLFF, Manager,

ROCHESTER, N. Y.

FOURTH WEEK

FOURTH SEASON

BEGINNING MONDAY, MAY 15, 1916.

The Manhattan Players



MISS OLIVE WYNDHAM


Banking Connections

It is the policy of this bank to give appreciative attention to all who bring their business here, regardless of the size of their transactions.

Start an account and let it grow here.

Rochester Trust & Safe Deposit Company

Main St. W., cor Exchange
ROCHESTER, N. Y.



SALE OF

Summer Bedding

THIS WEEK

A good time to supply the cottage

Sibley, Lindsay & Curr Co.

You'll Need a Gas Fired, Copper Coil Water Heater More than Ever During the Housecleaning Season

You will find a copper coil, gas fired water heater an invaluable aid during housecleaning time. It will insure a speedy supply of hot water at any time of day or night, and you won't have to worry about the condition of the coal fire. Our prices are no higher than they were before the metal market hit the present high level.

PRICE \$16.00

Set up ready for use providing there is a flue opening in the kitchen.
Satisfactory operation guaranteed or no sale.

Bell, Main 3960

Home, Stone, 125

We will send for your order at any time or place to suit your convenience

Rochester Railway and Light Company

Programme

FOURTH SEASON

FOURTH WEEK

MONDAY, MAY 15th, 1916

The Manhattan Players

(Direction John W. Rumsey and Edgar J. MacGregor.)

PRESENT

"A FULL HOUSE"

By Fred Jackson.

Produced Originally and now under the Personal Supervision of
Mr. MacGregor.

(This is the first time this play has been performed here.)

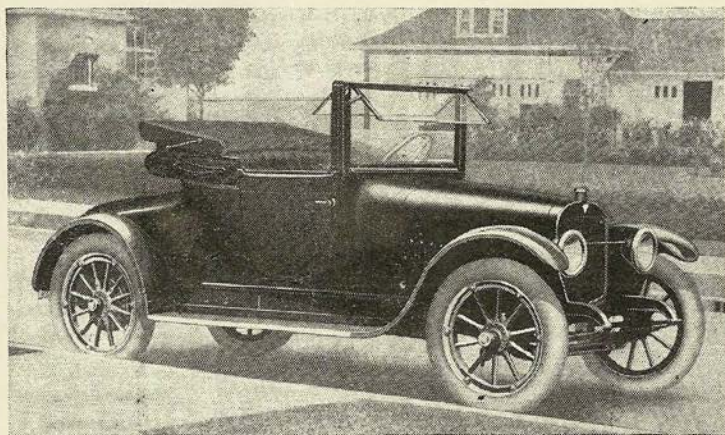
The Hofbrau "The Restaurant that is in a class by itself."

The modern high-class restaurant is something more than a place in which to eat and drink.

People who know how to enjoy life want the best of food—prepared with that artistic touch which pleases the palate—they expect prompt and polite service: but they want something more.

Beautiful and harmonious decorations, musical entertainment by capable artists, the presence of many others who are also enjoying themselves—these things complete the picture.

The Hofbrau is all that one could desire in a restaurant. It is a part of Rochester's social life.



Six Body Styles

All Master Models—in Hudson Super-Six

THE Super-Six motor has made Hudson cars supreme. It is a Hudson invention, controlled by Hudson patents. No other car offers anything like it.

This motor is 80% more efficient than other like-size motors. It delivers 76 horsepower, where other motors of this size deliver 42. Because of this fact, the Super-Six has officially broken all records for stock cars.

The patented feature eliminates vibration. It saves the power which was wasted in friction. The result is utter smoothness. Also double endurance, due to absence of wear.

With this vast reserve power the motor is never taxed. With this smoothness the motion is bird-like. No other car of any type compares with this in performance. A half-hour ride will prove this.

The Cabriolet—illustrated with top folded—is but \$1675 at Detroit.

*7-Passenger Phaeton, \$1375 at Detroit
Five Other Styles of Bodies*

Alling & Miles, Inc.
37 East Avenue



Capital and Surplus Over \$900,000 Resources Over \$10,000,000

New accounts are always welcome at this Bank, and we shall use our best efforts to make your dealings with us satisfactory in every way. You will find that every accommodation consistent with sound banking principles will be afforded you.

An invitation is extended to you to "Make this Bank your Bank."

Interest Paid on Deposits

UNION TRUST COMPANY

25 STATE STREET

PROGRAM CONTINUED

THE CAST:

Parks, an English Servant.....	John H. Lee
Susie, a Maid from Sioux City.....	Oza Waldrop
Ottillie Howell, the Bride.....	Olive Wyndham
Miss Winnecker, the Aunt from Yonkers.....	Alice Butler
Daphyne Charters, Ottillie's Sister.....	Tessa Kosta
Nicholas King, a Stranger	Ernest Cossart
Ned Pembroke, Jr., an Only Son.....	James Spottswood
George Howell, a Bridegroom.....	Reginald Denny
Dougherty, a Police Seregant	James T. Galloway
Jim Mooney, a Policeman.....	Robert M. Middlemass
Kearney, a Policeman	Geo. Spivins
Mrs. Fleming, who owns the apartment.....	Ethel Wilson
Vera Verona, a Show Girl.....	Alice Hills
Mrs. Pembroke, from Boston	Mayme Taylor

SYNOPSIS

ACT I.—The Drawing Room of Mrs. Fleming's Apartment, Riverside Drive, New York City.

ACT II.—Same.

ACT III.—Same.

TIME—Early spring of this year.

Note to Patrons—It is essential that the patrons reserving seats for any performance kindly pick them up at least twenty-four hours before that performance. Our subscribers' attention is gently called to this fact, so that undesired seats may be sold in the box office without inconvenience.

Millinery worn by the ladies of the company is from the French shop of Miss Dubelbeis, Clinton Avenue, south.

ALLIANCE BANK



MAIN STREET EAST
AND STONE STREET

OFFICERS

JAMES G. CUTLER, President
HENRY A. STRONG, Vice-President
ABRAM J. KATZ, Vice-President
THOS. E. LANNIN, Vice-Pres & Cashier
WILLIAM J. SIMPSON, Asst. Cashier
FRANK S. THOMAS, Asst. Cashier
LEON L. BENHAM, Asst. Cashier

PROGRAM CONTINUED

STAFF FOR THE PLAYERS

Richard J. Madden Business Manager
James T. Galloway Stage Manager
John Lee Asst. Stage Manager
Wilbur M. Williams Scenic Artist

MUSICAL PROGRAM.

Overture—"The Prince of Pawtucket"..... Margis-Berger
Selection—"Very Good Eddie" Jerome Kern
"Admiration"—Hawaiian Idyl W. H. Tyers
Selection—"Ziegfeld's Follies, 1915" L. A. Hirsch
Serenade V. Herbert
"Ragtime Pipe of Pan"..... Sigm. Romberg
"New York Hippodrome"—March J. Ph. Sousa

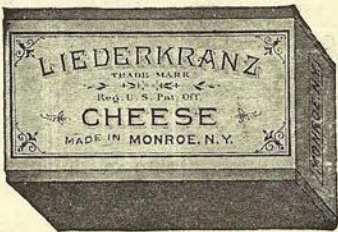


GRAND IMPERIAL SEC

Fermented in the Bottle
A most delicate and
pleasant flavor
CHAMPAGNE
equal to the best
imported wines.
GOLD MEDAL
Wherever Exhibited

**Germania
Wine Cellars**
Hammondsport, N. Y.
For Sale at All First
Class Cafes & Dealers

An Approved Delicacy



Made in U. S. A.

FOURTH SEASON

FIFTH WEEK

BEGINNING MONDAY, MAY 22, 1916.

MATINEES ON WEDNESDAY AND SATURDAYS ONLY.

The Manhattan Players

WILL PRESENT

"The Outcast"

This is the very remarkable play which served more than any other vehicle to bring Elsie Ferguson to the fore as one of America's most gifted young actresses. Oddly enough, Miss Olive Wyndham has been oftentimes compared with Miss Ferguson for a strangely striking resemblance of style and method. It was not a difficult matter, therefore, for the management of the Players to decide on this play for Miss Wyndham, directly arrangements had been concluded for her joining the Company. Hubert Henry Davies, who wrote "The Outcast," is also the author of "Cousin Kate," which served Ethel Barrymore so well and profitably in her early career, and also "The Mollusc," which enjoyed a brief but artistic career in this country with Sir Charles Wyndham in the title role. "The Outcast" has been aptly called "A woman's play," for its striking emotional depths and the wonderful play of feminine fancy in which Davies reveled. It should advance Miss Wyndham immeasurably with the discerning theatre-going public of Rochester.

Mr. Denny will be admirably cast in the role of Geoffery Sherwood, originally played by Charles Cherry, Miss Waldrop as Valentine and Mr Cossart and Mr. Spottswood as Hugh Brown and Tony Hewlett. Other members of the company will be found in congenial roles.



Travelectric



RATES---Lower than by any outhor route.

SERVICE---Fast and Frequent.

LUXURY---Parlor Car six times every week day.

TICKET OFFICES

Erie Terminal, Culver Road,
Sibley, Lindsay and Curr Co.

Empire United Railways, Inc.

Freight Office, - - - 200 Exchange Street

FREIGHT RATES---Competitive with steam lines.

FREIGHT SERVICE---Fast and certain.

FREIGHT CARS---Clean and well heated.



Shipelectric

