

TEMPLE THEATER



~ REFINED ~
VAUDEVILLE
SEASON
1916-17



Field
BAKED GOODS

129 CLINTON AVE. SOUTH

BOX OFFICE REGULATIONS

OPEN from 9 a. m. to 9 p. m.

REQUESTS BY MAIL for Reservation of Seats or Boxes must necessarily be accompanied by check or current funds to secure the desired reservation, and if the return of the seats is desired, a self-addressed stamped envelope must accompany order.

REQUESTS BY TELEPHONE for Reservation of Seats or Boxes can only be observed until 3 p. m. of day of performance, unless special arrangements be made.

Bell Phone 6 Main.

Home Phone 990.

Attention is invited to the plan adopted for the permanent reservation of seats for patrons who wish to attend performances each week. Seats may be reserved for the season by leaving name at the box office, selecting location and indicating the matinee or evening performance for which they will be required each week. Seats so engaged will be laid aside and held until the day previous to the performance. Patrons are thus assured the same seats each week.

SUGGESTIONS FOR PATRONS

Physicians who anticipate being summoned are requested to leave the number of their seats at the box office.

Lost Department—All articles found in this theater should be left at the box office, where they will be restored to the owner. Inquiries intended for this department may be directed to Manager or Superintendent.

Parlors—Women's parlor is at the left of the foyer as you enter the theater, and gentlemen's smoking room is at right, down stairs.

Attaches—Every attache of this theater is eager to lend every possible attention and courtesy to its patrons. Any information required will be cheerfully given, and it is unnecessary to tender gratuities, as the practice is not permitted by the management, and renders the recipient subject to dismissal.

Any Suggestion that may conduce to the comfort or convenience of the patrons of this theater will be gladly entertained.

Temple Theater

ROCHESTER, N. Y.

COMPANION THEATER TO THE

TEMPLE THEATER

DETROIT, MICH.

MOORE-WIGGINS CO., Limited, Proprietors

J. H. MOORE, . . . General Manager

J. H. FINN, . . . Resident Manager

EXECUTIVE STAFF

Booking Manager, CARL D. LOTHROP

Treasurer, . . . GEORGE F. GREEN

Stage Manager . . . BERT CALEY

PRICES

EVENING

Orchestra, First 10 Rows, . . .	75c
Remainder of Lower Floor, . . .	50c
Balcony, First 7 Rows, . . .	35c
Remainder of Floor, . . .	25c
Upper Balcony, . . .	15c

MATINEES

Entire Lower Floor, . . .	25c
Holidays, . . .	50c
Upper Balcony, . . .	10c

BOXES

Evening, . . .	75c
Matinee, . . .	50c

TWO FAMOUS STARS

From "Watch Your Step" Coming to the Temple
Next Week.

Elizabeth Brice and Charles King, foremost artists of the modern song and dance type, are now looked upon as standards in their line. This season they have a new musical offering, written especially for them by Herbert Moore, the Chicago writer. Brice & King need no introduction to Temple audiences. Long ago Rochester vaudeville fans voted them the most popular pair in the two-a-day.

Miss Brice is an Ohio girl and rose from the chorus of a Broadway musical comedy. She was understudy for Nora Bayes in "The Jolly Bachelors" and later sang in "The Social Whirl." She was understudy for Adele Ritchie and acquitted herself so creditably as to leave no question of her ability. Then, with Mr. King, she set out on the sea of vaudeville, and the team became one that was in constant demand. Following this the combination came to an end when Mr. King married Leila Rhodes, a cousin of George M. Cohan, and one of the features of the Cohan Revue. Prior to and following his marriage, Mr. King took Mr. Cohan's parts according as the latter finished his work in them, replacing him in such plays as "The Little Millionaires," "The Yankee Prince," etc.

Meanwhile Miss Brice fell heir to Miss Ritchie's parts, and steadily climbed the ladder to metropolitan success. She worked single in vaudeville and became one of the features of Ziegfeld's "Follies." Then came a flood of requests and demands from the public, and the vaudeville managers in turn made a series of attractive offers to Miss Brice and Mr. King to get together again. They accepted the offer and then after a season they were paired off as one of the stellar attractions in "Watch Your Step." Recently they again returned to the vaudeville stage, where they find themselves in constant demand.

Mr. King comes from a theatrical family and has two sisters, Nellie, with whom he worked in vaudeville, and Molly, both of whom now are successful motion picture actresses. He also worked in vaudeville with Bobby Higgins, who later became a member of the team of Melville and Higgins, and is now teamed with Al. Lydell.



TEMPLE THEATER



Rochester's Foremost Playhouse

Devoted to J. H. Moore Vaudeville

One of the Handsomest and Safest Theaters in the World

MOORE-WIGGINS COMPANY, Ltd., Proprietors

J. H. MOORE, General Manager

J. H. FINN, Resident Manager

NEXT WEEK

The Higher Grade of Vaudeville Catering to the Intelligent Exclusively.

The Most Popular Pair in Vaudeville

ELIZABETH BRICE & CHARLES KING

Offering a Repertoire of New Song and Dance Numbers Especially Adapted to Their Individual Talents. Former Stars of "Watch Your Step" and Other Big Broadway Successes.

That Sterling Dramatic Actor

PORTER J. WHITE

Michigan's Most Talented Thespian, Assisted by His Own Company of Players, in

"THE HIDE-AWAY,"

A New and Thrilling Play in One Gripping Act by Oliver White, with Just a Touch of Comedy to Relieve the Suspense.

Johnnie===JOHNSTON & HARTY===Sam

In "ON THE SHREWSBURY,"

A Skit Quite Out of the Ordinary with a Lot of Characteristic Humor.

THE THREE HASTINGS

In "BITS OF VAUDEVILLE."

GEORGE M. ROSENER

Character Types.

THREE HICKEY BOYS

Acrobatic Dancers.

KERR & BERKO

Juvenile Musicians in a Novel Violin Number.

ERNA ANTONIO TRIO

Sensational Gymnastics.

TEMPLE PICTORIAL REVIEW

"Bringing the World to You."

Two performances daily

Doors open for Matinee at 1:45 P. M.; Curtain at 2:15 P. M.

Doors open for Evening at 7:45 P. M.; Curtain at 8:15 P. M.

Acts are run in the order given only when feasible to do so, and the routine is subject to change without notice.



**THE
NATIONAL BANK
OF
COMMERCE**

**30-32-34 STATE STREET
ROCHESTER, N. Y.**

RESOURCES \$ 12,000,000.00

Take advantage of our annual

JANUARY FUR SALE

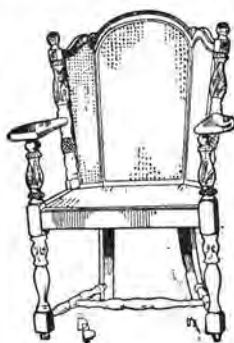
which promises this year to be even a greater Fur buying event than it has been in the past years because of the following reasons :

We have a greater variety of Fur Coats and Furs from which to choose.

And this year you will make a double saving.

The reduction of this year and the advance in the price of skins for next season.

This sale includes our entire stock of Ladies' Fur Coats, Ladies' Furs, Men's Raccoon and Moting Coats and Men's Fur Lined Coats of "Meng & Shafer" quality guaranteed.



Think of Buying a Chair

from a selection of over 400 patterns of chairs and rockers designed for living-room, library and parlor use.

Whether you are looking for a chair as a gift or for the embellishment of your own home, you cannot fail to find something of pleasing style and at the price you desire to pay from such a large assortment. Why not save time in shopping around by looking here first?

The style illustrated is a very popular number. It comes in genuine solid mahogany with cane seat and back in the antique finish. We are also showing many designs similar to this upholstered in the new velours and attractive tapestries.

We make a large and attractive showing in all overstuffed pieces covered in leather, tapestry and velour.

A Kaltex chair or rocker in the baronial brown finish and upholstered in tapestry makes an excellent "fill in" piece for the home.

MAMMOTH
ASSORTMENTS

H.B. GRAVES CO.
78 STATE ST., ROCHESTER, N.Y.

WE FURNISH
HOMES COMPLETE

GREAT WESTERN CHAMPAGNE

The Only American Cham-
pagne Ever Awarded
a Gold Medal at
Foreign
Expositions



EXTRA DRY
(MEDIUM DRY)
SPECIAL RESERVE
(VERY DRY)

Paris Exposition, 1867, France.
Paris Exposition, 1889, France.
Paris Exposition, 1900, France.
Vienna Exposition, 1873, Austria.
Bruxelles Exposition, 1897, Belgium.
Bruxelles Exposition, 1910, Belgium.

PLEASANT VALLEY WINE CO.
Oldest and Largest Champagne Producers in America
RHEIMS, N. Y.

ORCHESTRA, JOS. MONK, DIRECTOR

"Peerless" March Joseph Howard
Medley Selection Harry Lauder
"High School Cadets" J. P. Sousa

Programme—A

5 Florimonds

Novelty Offering of Unsupported Ladders.

CONSULT

CALDWELL SUPERFLOUS HAIR

MOLES, WARTS, PIMPLES,
BLACKHEADS, ACNE,
COARSE PORES, DANDRUFF,
FALLING HAIR,
ITCHING SCALP
PREMATURE BALDNESS, ETC.

Credentials from a Medical Faculty
Consultation Free

60 FORMERLY 229 EAST AVE.

Telephone Stone 3778

Office Hours 10 A. M. to 5 P. M.

Others by appointment.

PERFECT CLEANSING

of your

EVENING GOWNS

AND FANCY DRESSES

Is assured by sending them to


RAPP'S
CLEANSERS DYERS
TAILORS

64 Clinton Ave. N.

Opposite Masonic Temple

BOTH PHONES

AUTO SERVICE



WORTH REMEMBERING

Linen Sale all this week
 Southern Millinery Display, Jan. 11th
 Sale of Boys' Wash Suits, Jan. 12th
 New Royal Society Packages are Ready

Sibley, Lindsay & Curr Co.

Flowers



Edwin C. Maelber
 inc

*49 Clinton Ave South
 Diagonally opp. Lyceum Theatre*



**TOKIO
 RESTAURANT**

Oriental Dishes of every description

68 MAIN ST. EAST

Opp. Democrat & Chronicle

INTEREST ACCOUNTS

Interest is computed on these accounts June 1st and December 1st of each year for the preceding six months and is credited to the account on these dates. Deposits made within the first four days of any month receive interest as of the first of the month. These accounts are carried in the Interest department and while no unreasonable restriction is made as to the amount upon which interest will be paid, the accounts should not be used for frequent checking for cash withdrawals, or in payment of bills.—Extract from our booklet BANK NOTES FOR WOMEN.

We will gladly send you the booklet but wish you would call in person and note the courteous reception you will receive. The booklet tells how easy it is to have a checking account.

IN THE CENTER OF THE RETAIL DISTRICT

THE ALLIANCE BANK, Main St. E. & Stone St.

Programme—B

Margaret Youngblood

Detroit Society Entertainer.

Elizabeth Brice and Charles King, who come to the Temple Theater next week in the headline position, were the bright stars of that successful musical comedy "Watch Your Step." They will offer a bit of musical comedy designed for vaudeville purposes exclusively.

DANCING

every evening after the
performance
at the

WHITCOMB HOUSE RATHSKELLER

Prof. Reynolds Banjo Orchestra
in Attendance

Special After Theater Menu

ASK YOUR OCULIST
ABOUT OUR WORK

WALDERT OPTICAL CO.

MAKERS OF
PERFECT FITTING
EYE GLASSES

257 MAIN ST. EAST

OPPOSITE SIBLEY'S

BALLROOM DANCES FROM NEW YORK



A. ELLIS SMITH will return to Rochester this week from his extended trip to New York's leading dance studios.

SMITH'S SCHOOL OF DANCING

Devoted to highest ideals of the art and profession.

Beginners will be given careful and patient attention as well as children, while advanced students receive scientific instruction to improve their dancing ability and the last word from New York on Ballroom Dances.

Toe. Classical, Interpretive, Grecian, Russian, Egyptian, Stage and Professional Dancing.

42 CLINTON AVE. N.

Open Daily

Main 5637

Programme—C

5 Musical Gormans

In a Musical Interlude.

Porter J. White, that well known actor, who gave vaudeville patrons that striking dramatic classic, "The Visitor," will return to the Temple next week in a new comedy-drama entitled "The Hide-Away."

Old Photos Copied

Daguerreotypes, tintypes, etc., can be copied and finished up in a modern Photo.

We make all kinds—Crayons, Sepias, Water Colors and Oil Paintings from life or old pictures. See samples of our work. Visitors always welcome to our studio.

Take elevator

PHOTOS
SMITH-CURRY
16 STATE ST
ELEVATOR

"He profits
most who
serves best"

Clean Cut Facts

Until you have tried our Ice Cream you have not tasted the best.

We use only the purest of ingredients—rich cream and pure fruit flavors.

The hostess who serves our cream for dessert or as a refreshment, is sure to have her dinners and social affairs accorded a success.

TRY IT!

I. Teall Catering Co.
263 EAST AVENUE
Phone 281

VICTOR RECORDS WHICH SHOULD BE IN EVERY HOME

- | | | |
|-------|---|-----------------------|
| 18183 | { Mammy's Little Coal Black Rose | Orpheus Quartet |
| | { When Evening Shadows Fall | Orpheus Quartet |
| 18182 | { American Trumpeter March | Conway's Band |
| | { All America March | Conway's Band |
| 18149 | { Chin Chin (<i>Saxophone Sextette</i>) | Six Brown Brothers |
| | { Laverne—Waltz Caprice (<i>Saxophone Solo</i>) | H. Henton |
| 64622 | { Sunshine of Your Smile (<i>Violin obligato</i>) | McCormack |
| 55066 | { Lucia Sextette | Victor Opera Sextette |
| | { Rigoletto Quartet | Victor Opera Quartet |

MUSIC LOVERS' SHOPPE

The Exclusive Victrola Store

41 EAST AVENUE



Programme—D

Thomas--Dugan & Raymond--Babette

In "THEY AUTO KNOW BETTER."

Rochester has come to be the favorite city of the vaudeville actor and actress. Formerly it was looked upon by the profession as a cold town. Now it is regarded as just the reverse. Applause, which had been a scarce article for the vaudeville people, is now had in abundance.

POOR BUTTERFLY

THE BIG 1917 SONG HIT AT THE HIPPODROME, NEW YORK

With all the other songs featured each week at the Temple,
are obtainable at the

NOVELTY MUSIC SHOP

"Where the Song Hits come from"

67 CLINTON AVE. NORTH

Next to Gordon Theater

COKE—COAL—WOOD

W. F. BARRON

580 CHILD ST.

BELL 1808 GENESEE

HOME 649 GLENWOOD

SABIN'S

AFTER THEATRE SERVICE

We specialize on Luncheons and Suppers for
After Theatre Parties.

Whether it's a matinee or evening performance, you
will enjoy a Dainty Luncheon or Supper before or after
the curtain falls.

STEAKS, CHOPS, SEA FOODS, ETC.

Eagleston Hotel Building

MAIN STREET EAST, Corner STONE STREET

Programme—E

Dunbar's Old Time Darkies

In Southern Plantation Melodies and Harmonies.

Every patron of the Temple Theater who sees Elizabeth Brice and Charles King at the Temple next week will recognize in them the peers of all their line in the vaudeville profession. Don't miss seeing the performance next week.



Why spend those long, cold
winter evenings that are com-
ing without music, when for
a small payment down and a
small monthly or weekly pay-
ment you can own

A
**Columbia
Grafonola**

With 12 Selections
of Music

\$89.90



We carry every model in every finish
of the Columbia Grafonolas, made by
the Columbia Graphophone Co., of
Bridgeport, Conn.

Your terms are our terms.

Opp. Hotel Seneca

23 CLINTON AVE. SOUTH



THE WELCOME HOME

When you greet home coming friends
could anything be more appropriate as a
welcome than some of our

BEAUTIFUL CUT FLOWERS

to fill their rooms with the fragrance of
kind remembrance and the beauty of
love?

UNIQUE, Florist

111 MAIN ST. EAST

Main 5220-J

Opp. McFarlin Clothing Co.

WE SATISFY YOU

We deal in money, it is our business. Sometimes you have money to put in the bank, and sometimes you need money in the way of a loan.

It is a part of our service to make you satisfied.

We invite your business, on the strength of our ability to take care of it properly, and to both please and satisfy you.

ROCHESTER TRUST AND SAFE DEPOSIT CO.

MAIN ST. WEST AND EXCHANGE ST.

Programme—F

Alan Brooks

In His Newest Comedy Dramalet

"DOLLARS AND SENSE"

The Humorous Tragedy in Four Episodes

Written by and produced under the sole personal direction of Alan Brooks.

The Personnel:

Jack.....	Alan Brooks
Helen.....	Peggy Coudray
Billy.....	Irving Dillon
Yosi.....	M. Nishi

Scene 1—Jack's rooms. To-night. 2 A. M.

Scene 2—Helen's country home. Eight years ago. 10 P. M.

Scene 3—Billy's home. To-night. 1 A. M.

Scene 4—Jack's rooms. To-night. 3 A. M.

THE BEST MUSIC

On the Edison Diamond Disc Phonograph. No needles to change. Don't fail to hear this marvelous instrument.

88 Note
Player
Rolls
25c.



All
the
Latest
Music

EVERYTHING IN MUSIC
AND MUSICAL
INSTRUMENTS

Call the PULLMAN TAXICAB CO.

FOR PULLMAN SERVICE

MAIN
972

STONE
2179



HUDSON SUPER SIX

1917 Models
7 Passenger Touring Car
Limousines and Sedans
Special Rates for Shopping
and Calling

OFFICE AND GARAGE: 21 HYDE PARK, NEAR N. Y. C. DEPOT



STACY'S FORKDIPT CHOCOLATES

Are dipped on the end of a fork without the fingers of the operator even touching the melted chocolate. They are made throughout from the highest grade of material, and have a more exquisite flavor than hand-dipped chocolates.

If your confectioner does not have them, send to-day for an elegant 3-layer 20-ounce box, fresh from our kitchens, \$1.00. Half size box, 50c.

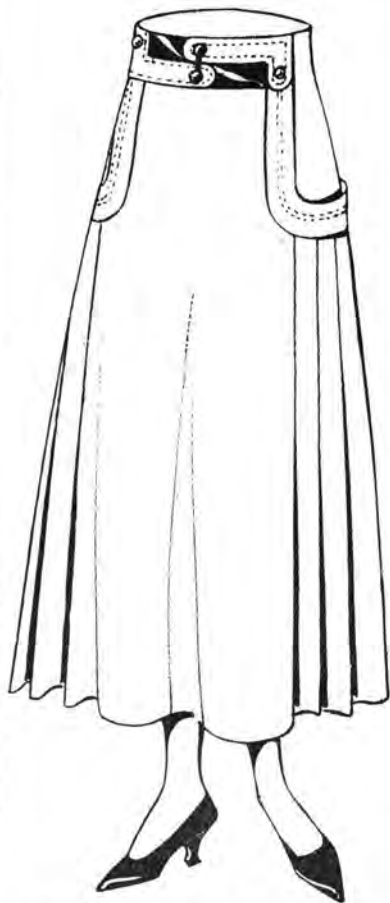
O. T. STACY CO.

Clinton Avenue North

LADIES' SMART SKIRTS

Of the Very Latest Colorings and Material, including

Serges, Whipcords, Gabardines, Velour, Plaids and Checks, Silks, Satins, etc. Also a full line of Novelty Skirts.



Made to Order or Ready-Made

\$3.50 to \$7.50

The only establishment in Rochester devoted to the manufacture of Ladies' Skirts exclusively.

Kleinberg Skirt Company

54 Clinton Ave. North

Opposite Masonic Temple

LuNette Shop For Women

IMPORTANT SALES THIS WEEK

SALE OF FINE UNDERMUSLINS

JANUARY CLEARANCE SALE OF SUITS, COATS,
SKIRTS AND DRESSES

In the undermuslins you get crisp new garments specially selected at concessions in price.

The clearance sale means reductions to you of $\frac{1}{3}$ to $\frac{1}{2}$.

LuNette Shop For Women

Thirty-five East Avenue

Programme—G

Carmela & Rosa Ponzillo

The Italian Girls.

The Baby Grand Piano used in this act is from the warerooms of E. W. Edwards & Son.

Nearly every act on the Temple Theater bill next week is new to Rochester vaudeville patrons. As the bill is one of the best balanced of the season, it is expected that the business will be very large.

LOSSES

ARE PROMPTLY PAID

If your FIRE INSURANCE POLICY is with the
COMMERCIAL UNION ASSURANCE CO.

“One of the oldest, largest and strongest companies in the world.”

Ask any C. U. A. policy holder.

JAMES MALLEY & SON

AGENTS

307 E. & B. BLDG.

BOTH PHONES



FREDERICK A. OTTO

ANNOUNCES

SPECIAL CLASS

IN

LONDON TAPS, TWO-TWO, RITZ WALTZ

EVERY THURSDAY EVENING

PRIVATE LESSONS BY APPOINTMENT

PHONE 5383 MAIN

The Lid Will Be Down Tight

On service of all departments
of the

Rochester Motoring Association for 1917

No touring information, routes, general information
or advice, stolen car or accident service, road service,
help when in trouble on the road, or supplies after
other stores are closed

EXCEPT TO MEMBERS

Rochester Motoring Association

191-195 EAST AVENUE

24 HOUR SERVICE

WHEN YOU NEED TIRES THINK OF ROWERDINK

SWINEHART PNEUMATIC TIRES

GOODRICH TRUCK TIRES

COMPLETE LINE OF

AUTO ACCESSORIES

W. H. ROWERDINK & SON

80 NORTH STREET

Programme—H

Mirano Brothers

The Flying Torpedoes, in Sensational Feats of Daring.

Patrons at out-of-town points desiring to reserve tickets for the Temple Theater in advance or to secure them for delivery to friends, may order and remit for same, and arrange for their delivery by Western Union Money Transfer, at small cost.

For Your Little Girl

YOUR LITTLE GIRL can do senior cooking in a junior way with a Hughes Junior Toy Electric Stove.

YOUR LITTLE GIRL will acquire helpful habits if she has a Hughes Junior Toy Electric Stove.

YOUR LITTLE GIRL will begin to learn home management in a fascinating way if she is provided with a Hughes Junior Toy Electric Stove.

YOUR LITTLE GIRL will some day manage a home of her own, therefore you should provide her with such toys as will enable her to know from actual experience how the work of the house should be done.

IF YOUR LITTLE GIRL knows how to do the work herself, then she'll know how to teach and direct others.

GET YOUR LITTLE GIRL an Electric Toy Stove as part of her educational equipment and start her on the way to knowing how to do the cooking for the home.

PRICE \$8.00

'PHONE OR WRITE FOR ONE

Rochester Railway and Light Co.

Bell—Main 3960

Home—Stone 3960

GOOD POSITIONS OPEN FOR YOUNG MEN

Who wish to learn Automobile Driving, Assembling and Repairing.

We prepare our pupils for this work by giving them the actual experience in our shops under the supervision of a master mechanic.

NATIONAL AUTOMOBILE SCHOOL

103 CORTLAND STREET

DAY AND EVENING CLASSES

Programme—I

Temple Pictorial

World's Events.



Osburn House

ROCHESTER, N. Y.

The Only First-Class American Plan Hotel in the City.

Rates, \$2.50, \$3.00 and \$3.50.

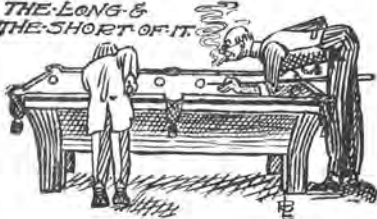
Headquarters for the Theatrical Trade.

Telephone and Running Water in Every Room.

150 Rooms, 50 with Bath.

Noon Lunch, 50c. Best in Town.

THE LONG &
THE SHORT OF IT



POCKET BILLIARD PARLOR

First-Class Equipment

Moderate Prices

WESLEY STERNER

PROPRIETOR

67 MAIN ST. WEST



Rochester Phone 2265 Stone
Bell Phone 3985 Main

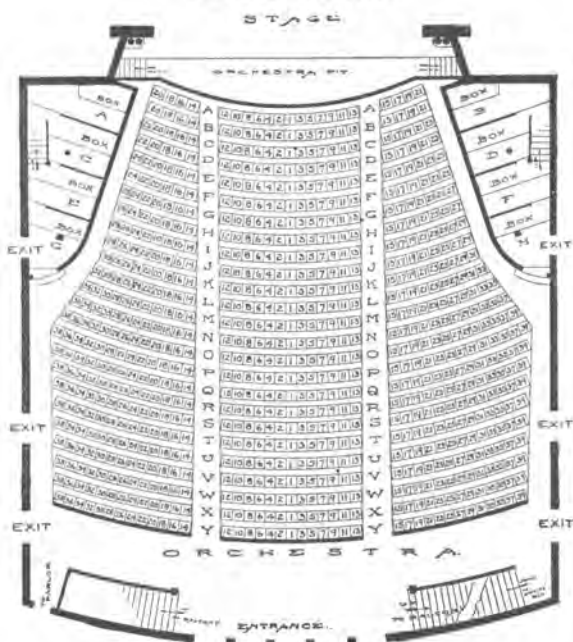
YOUNG'S

Shell Oyster and Fish Market

ALL KINDS OF SEA FOOD IN SEASON
LOBSTERS, SCALLOPS, ETC.

114 MAIN STREET WEST

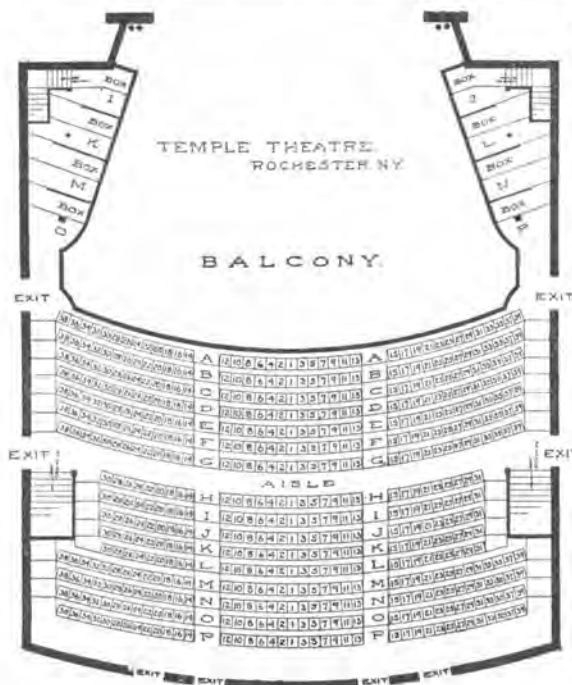
TEMPLE THEATRE



NOTICE

Look around NOW and choose the nearest exit to your seat. In case of excitement, walk, not run, to that exit. Do not try to beat your neighbor to the street.

R. ANDREW HAMILTON,
Commissioner of Public Safety.



W. M. LEAHY,  PRINTER

This is the time of night your car, if left on the street, may be taken.

This is the kind of weather your car will be ruined if left outside.

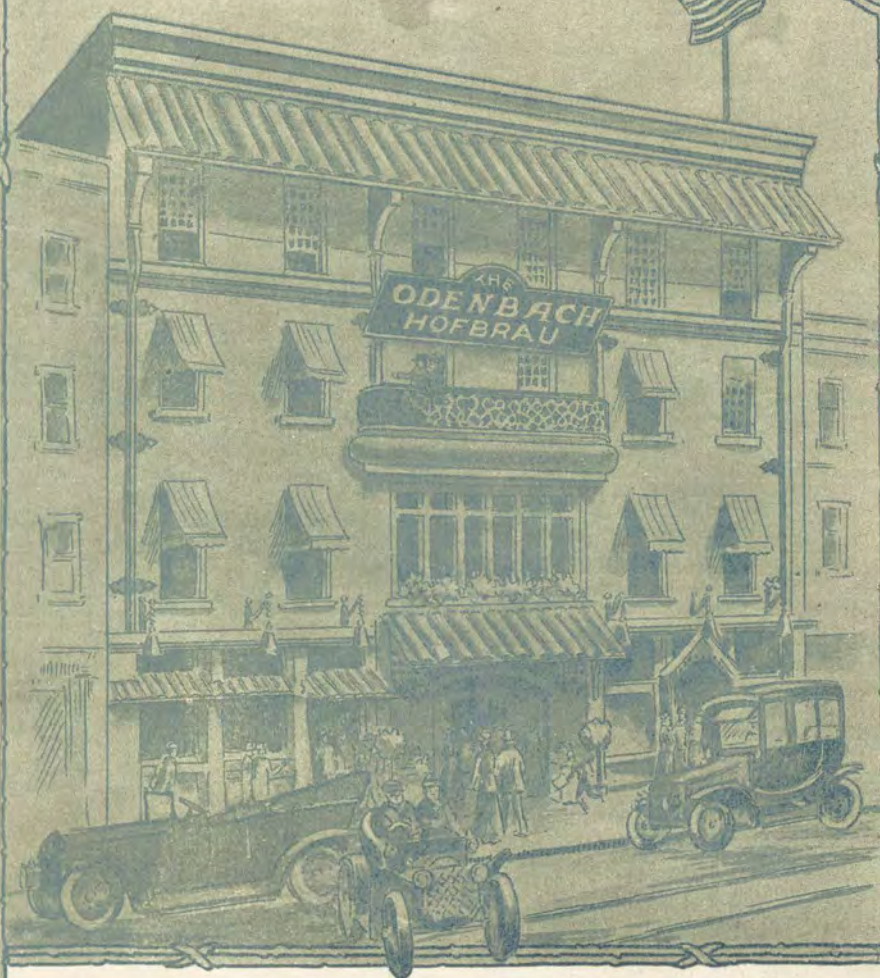
For twenty-five cents you may store it in our garage during the performance.

Rochester Taxicab Co.

MAIN 375 STONE 310

70-78 Clinton Av.S.

Call a Rochester Taxi
Anytime from Any
Place for Anywhere.



AN EVENING'S ENTERTAINMENT

BY HIGH CLASS ARTISTS

AT

THE



HOFBRAU

REICHARDT'S METROPOLITAN ORCHESTRA

In Attendance During Dinner and After Theater

From 6 to 11 o'clock

From 11 to 1 o'clock

