

TEMPLE THEATER



~ REFINED ~
VAUDEVILLE
SEASON
1917-18

THE ROCKAWAY
ROTISSERIE



23 MAIN ST. EAST

BOX OFFICE REGULATIONS

OPEN from 9 a. m. to 9 p. m.

REQUESTS BY MAIL for Reservation of Seats or Boxes must necessarily be accompanied by check or current funds to secure the desired reservation, and if the return of the seats is desired, a self-addressed stamped envelope must accompany order.

REQUESTS BY TELEPHONE for Reservation of Seats or Boxes can only be observed until 3 p. m. of day of performance, unless special arrangements be made.

Bell Phone 6 Main.

Home Phone 990.

Attention is invited to the plan adopted for the permanent reservation of seats for patrons who wish to attend performances each week. Seats may be reserved for the season by leaving name at the box office, selecting location and indicating the matinee or evening performance for which they will be required each week. Seats so engaged will be laid aside and held until the day previous to the performance. Patrons are thus assured the same seats each week.

SUGGESTIONS FOR PATRONS

Physicians who anticipate being summoned are requested to leave the number of their seats at the box office.

Lost Department—All articles found in this theater should be left at the box office, where they will be restored to the owner. Inquiries intended for this department may be directed to Manager or Superintendent.

Parlors—Women's parlor is at the left of the foyer as you enter the theater, and gentlemen's smoking room is at right, down stairs.

Attaches—Every attache of this theater is eager to lend every possible attention and courtesy to its patrons. Any information required will be cheerfully given, and it is unnecessary to tender gratuities, as the practice is not permitted by the management, and renders the recipient subject to dismissal.

• Any Suggestion that may conduce to the comfort or convenience of the patrons of this theater will be gladly entertained.

Temple Theater

ROCHESTER, N. Y.

COMPANION THEATER TO THE

TEMPLE THEATER

DETROIT, MICH.

MOORE-WIGGINS CO., Limited, Proprietors

J. H. MOORE, . . . General Manager

J. H. FINN, . . . Resident Manager

EXECUTIVE STAFF

Booking Manager, CARL D. LOTHROP

Treasurer, . . . GEORGE F. GREEN

Stage Manager . . . BERT CALEY

PRICES

EVENING

Orchestra, First 10 Rows, . . .	75c
Remainder of Lower Floor, . . .	50c
Balcony, First 7 Rows, . . .	35c
Remainder of Floor, . . .	25c
Upper Balcony, . . .	15c

MATINEES

Entire Lower Floor, . . .	25c
Holidays, . . .	50c
Upper Balcony, . . .	10c

BOXES

Evening, . . .	75c
Matinee, . . .	50c

1,000 Reserved Balcony Seats at Matinee Performances, Saturdays and Holidays excepted, 10c.

IN RE MME. DOREE

Who Appears at the Temple Theater

Next Week.

N. Y. World—When a woman is mentally brilliant, handsome and fashionably conspicuous, she is bound to cut a figure even in as large a city as New York. Mrs. Doree Lyon was much in the papers a few years ago. She was one of Manhattan's conspicuous persons. Society, and club women in particular, knew her well.

When fortune dealt unkindly with her, she died the social death. But did she pine in solitude, in futile bewailing of the past? Hardly. She was made of different mould. As "Mme. Doree" she has succeeded once more, and in an entirely different field.

"I always had been interested in singing," she said, "especially in grand opera. So I determined when all else had failed, to put my former fad to good use.

"Opera had never been highly popularized outside of the bigger cities, for the obvious reason that the singers were never good. I undertook to get genuine stars, but, of course, at a minimum cost. And they must, I determined, not only sing, but also look the parts. Mercy, what a task I undertook!

"I found my 'Schumann-Heink' so far as the contralto voice was concerned, but the lady was slim and blonde. My 'Caruso' had departed to the trenches, and I had to tackle the Italian government to get him out. Fortunately Signor Romito was somewhat obese for military form. It took endless time and patience to get them assembled, but I succeeded.

"In reality our troupe is an itinerant school, with Signor Adamo Gregoretti, Tetrazini's original baritone, as trainer of amateur voices."

Apparently in talking, Mme. Doree was entirely occupied with her company, and not with reminiscences of former days. Finally, however, the crucial question was put:

"Having tried both, which do you prefer—the life of a society belle or the grind of the genuine business woman?"

"There is no comparison," was the unexpected reply. "There is no thrill like the thrill of independent achievement, no pleasure like that of creating something worth while."



TEMPLE THEATER

Rochester's Foremost Playhouse Devoted to J. H. Moore Vaudeville

One of the Handsomest and Safest Theaters in the World

MOORE-WIGGINS COMPANY, Ltd., Proprietors

J. H. MOORE, General Manager

J. H. FINN, Resident Manager



NEXT WEEK

There are but two kinds of vaudeville—"Big-time" and "Small-time." The Temple is the only Rochester theater privileged to present the "Big-time."

An Unusual Festival of Song for the Lovers of High Class Music

MME. DOREE'S CELEBRITIES

A Specially Selected Aggregation of Superfine Vocalists in a Series of Impressions of the Greatest Operatic Artists Offering a Most Remarkable and Delightful Musical.

Stars of Many Successes, Now a New Team

FRANK MOORE

Formerly of Florence Moore and Brother Frank
and

JOE WHITEHEAD

"Nut" Comedians Who Chase Gloom Away Up the Back Street.

Excessive Fun for Young and Old

FINK'S MULES

Vaudeville's Latest Equine Joy Fest.

FARRELL-TAYLOR COMPANY

In "THE AFRICAN DUKE,"

Introducing Beatrice Diamond, Farrell Taylor, Tom Carter and Carlena Diamond.

"2 IN 1"

Abe===LEAVITT & LOCKWOOD===Ruth

Artistic Odds and Ends.

A Glimpse Behind the Scenes

DOROTHY HAYS

Assisted by Maxine Alton

In "TWO WEEKS' NOTICE,"

A One-Act Comedy of Stage Life by Dan Kusell.

Gosh All Hemlock, How Sam Can Fiddle!

SAM HEARN

With His Fiddle and Bow.

JACK & FORIS

The Jolly Frenchmen.

MOORE'S MOTION PICTURE LIBRARY

Interesting and Educating.

Two Performances Daily

Doors open for Matinee at 1:45 P. M.; Curtain at 2:15 P. M.

Doors open for Evening at 7:45 P. M.; Curtain at 8:15 P. M.

Acts are run in the order given only when feasible to do so, and the routine is subject to change without notice.

The Odenbach Restaurant

And, as you leave the theater remember that
we have a really worth while musical treat—

REICHARDT'S NEW YORK SOCIETY ORCHESTRA

and some delightfully good things to eat—
ready for you—and your guests.

The Income Tax Law requires women to make
RETURNS of income as well as men.
Whether you are a depositor or not, we will be
glad to make this return for you. There is no
charge for this service.

The ALLIANCE BANK

Main Street East and Stone Street

IN THE CENTER OF THE RETAIL DISTRICT

**AFTER THE SHOW DO NOT FAIL
TO VISIT THE**

YOUNG CHINA **CHINESE AND AMERICAN RESTAURANT**

194 MAIN ST. EAST

Luncheon served from 11 A. M. to 2 P. M., Special Supper 5 to 8 P. M.

Private dining rooms for ladies and gentlemen.

Open every day, Sundays and holidays also, from 11 A. M. to 1 A. M.

A la carte service 11 A. M. to 1 A. M.

Future Safety

It is not enough to make sure of safety now, but safety in the future should be considered in placing money at interest.

For this reason an account in this bank is the best possible investment you can obtain. No matter what may happen to business or finance, such an investment is always worth its face value plus interest.

Safe Deposit Boxes for rent.

ROCHESTER TRUST

MAIN ST., W.—AND—EXCHANGE ST.

SAFE DEPOSIT CO.

Have you had Lunch or Tea at

TEALL'S?

A dainty, attractive, restful room, the best of food with a distinctive flavor, quiet service—an ideal combination for women of refinement.

Regular Lunch 11:30 to 2:30
75c.

Afternoon Tea 3 to 6:30
from 25c. up.

A la carte all day till 7 P. M.

No extra charge for parlors for card parties.

Telephone and reserve your tables.

I. Teall Catering Co.

263 EAST AVE.

Park Ave. car to Union St.—then
just a step around the corner.



Designs in Bed-Room Furniture



Never before has there been such a wide range of choice in styles in bed-room furniture at prices so well within the reach of the average pocket-book. Our showing of bed-room furniture includes suites in the Adam, Colonial, Louis XV, Queen Anne, William and Mary and popular modern designs. They are made up in mahogany, walnut, ivory enamel, bird's eye maple and quartered oak woods. One may have choice of brass, wood or enameled iron bed with practically every suite. Do not fail to see this exhibition of fine designs in bed-room furniture on 5th floor of our store.

"Rochester's
Home Store"

H.B. GRAVES CO.
78 STATE ST., ROCHESTER, N.Y.

See the
Furnished
Rooms

GREAT WESTERN CHAMPAGNE

BRUT SPECIAL 1903

(Absolutely Brut)

SPECIAL RESERVE

(Very Dry)

EXTRA DRY

(Medium Dry)

**SPARKLING RED
BURGUNDY**



The only
American
Champagne
ever awarded a
Gold Medal at a
Foreign Exposition

Paris Exposition, 1900, France
Paris Exposition, 1867, France
Paris Exposition, 1889, France
Vienna Exposition, 1873, Austria
Bruxelles Exposition, 1897, Belgium
Bruxelles Exposition, 1910, Belgium

**Pleasant Valley Wine Co.
RHEIMS, NEW YORK**

OLDEST AND LARGEST MAKERS OF CHAMPAGNE IN AMERICA

ORCHESTRA, JOS. MONK, DIRECTOR

"Liberty Bell"	Halsey K. Mohr
Selection—"America"	Manuel Klein
"Strutter's Ball"	Shelton Brooks

Programme—A

Witt & Winter

Pair of Aces.

THE ASIA CHINESE

AND

AMERICAN RESTAURANT

With new and attractive paintings
that give this place a most home-
like atmosphere.

Best food at popular prices.

68 MAIN STREET EAST

Opposite Democrat & Chronicle Office

Formerly Tokio Restaurant

Phone, Stone 3251

Orders put up in boxes to take home

Your Spring Clothes

Now is the time to have your
Spring clothes dry cleaned, pressed
or dyed. For reliable and satisfac-
tory service send them to

RAPP'S

**Cleansers Dyers
Tailors**

64 Clinton Avenue North

Opposite Masonic Temple

Both Phones

Auto Service

Lu Nette SHOP

35 EAST AVE.

ROCHESTER

SPRING FASHIONS

We are constantly keeping you in touch with the latest fashion tendencies in outing garments for women and misses.

Just now tailored suits, serge and silk dresses are demanding most attention.

We have them at moderate prices.

Mother—

Your grown-up sons and daughters have urged you many times to have your picture taken.

Can you imagine anything that'll give them so much pleasure as your photograph?

We are showing some new designs in exclusive folders.

PHOTOS
SMITH CURRY
16 STATE ST
ELEVATOR

ALICE M. HARTIGAN

HATS

73 CLINTON AVE. SOUTH

NEXT TO VICTORIA THEATER

UP STAIRS

PHONE MAIN 2937-W

Pure

Candies

POWERS'

Delicious

Salted Peanuts

Temple Theater Building

DAINTY CONFECTIONS

NOURISHING LUNCHEONETTES

HOT CHOCOLATE

TRY THEM BEFORE AND AFTER THE THEATER

Programme—B

Earle Cavanaugh

In "MR. INQUISITIVE,"

With RUTH TOMPKINS and a Bevy of Broadway Beauties.

Book and Lyrics by Edith Jane and Earle Cavanaugh.

Staged by Jack B. Loeb.

Direction of Harry Rapp.

Cast

Miss Swift.....	Marie Rose
Miss Brewn.....	Cecil Harrington
Miss Bright.....	Emily Pullman
Miss Hightonic.....	Claire Lorraine
Minister Case.....	Pete Purcell
MARY ELAINE.....	RUTH TOMPKINS
LINCOLN WEALTH.....	EARLE CAVANAUGH

Time—Present.

Place—New York City.

MUSICAL NUMBERS

1. A Movie.....	By itself
2. Do You Follow Me.....	Earle Cavanaugh and Nurses
3. Song.....	Ruth Tompkins and Nurses
4. Specialty.....	Ruth Tompkins and Earle Cavanaugh
5. A Dream.....	By itself
6. Finale.....	Entire Company

Mme. Doree, who brings her famous singers to the Temple next week, was formerly a high society queen in the metropolis. Her right name is Mrs. Dore Lyon, and she is the widow of a former multi-millionaire.

Stop Throwing Away Your Old Razor Blades

Safety Razor Blades RE-EDGED

Better than New—Satisfaction Guaranteed.

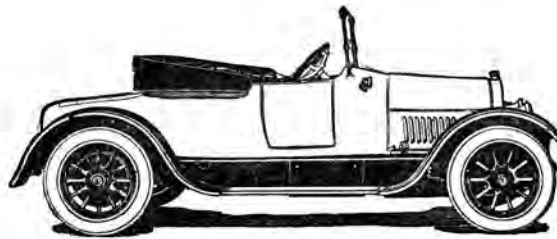
ROCHESTER KEEN EDGING COMPANY

296 Main Street East

Type 57



Always worth par.

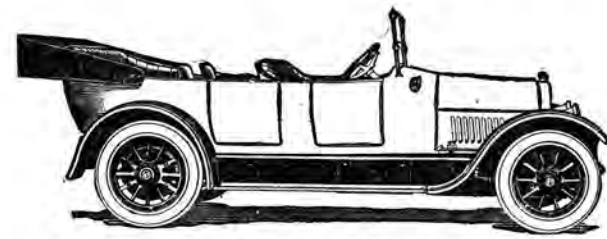


The Two-passenger.

You've Probably Heard It.

There has been current for some time a rumor that there is impending a spring shortage of motor cars, and while we are loath to believe it we cannot blind ourselves to present conditions to the extent of refusing to admit that just such a situation is most likely to come about.

Such a scarcity of new cars will surely have its reaction on the used car market, so that the better class of used cars will not only be in greater demand—and available in smaller numbers—but will undoubtedly command higher prices.



The Seven-passenger.

The supply of new Cadillacs has seldom equalled the demands of spring buyers, even in normal times, and with a shortage apparently staring us in the face we deem it advisable to call your attention to the wisdom of ordering your new car now—and of taking delivery as soon as you can get it—so that you may avoid the delay and even possible disappointment consequent to your waiting too long.

Mabbett-Bettys Motor Car Company

THE LIMIT OF EXCELLENCE

In other Talking Machines is but the starting point of the many superior qualities of the VICTROLA.

With VICTROLAS from \$20 to \$400 surely you can be pleased. Records, too, are priced from 75c up—7,000 titles.

Easy Terms. Superior Service.

MUSIC LOVERS' SHOPPE, Inc.

41 EAST AVENUE

ROCHESTER, N. Y.



Programme—C

Harry Ellis

America's Famous Tenor

Introducing His Latest Compositions: "When You Were the World to Me," "When the New Love Proves Untrue," "Ireland Will Go On Forever."

The vaudeville bill selected for next week appears to teem with just the kind of talent the patrons of the Temple take special delight in. It is headed by one of the greatest singing acts on the American stage.

WARTIME WORRIES

DONE AWAY WITH

If you are tired of keeping house; tired of the worry caused by incompetent help; tired of the coal man saying "Impossible"; tired of the groceryman saying "No sugar"; or the milk man forgetting to leave the cream; the paper boy on a stormy morning don't leave the paper; if you are tired of all these—why don't you live at the Hotel Rochester, at far less cost, and escape all the nerve racking annoyances?

A few choice rooms with bath or shower for permanent people at very attractive prices.

Come in—see the rooms—get our prices—conclude arrangements.

"Mother" will enjoy the rest, you the change, at this modern fire-proof, high-class establishment.

HOTEL ROCHESTER

MILTON ROBLEE, Manager

HOOVERIZE—SABINIZE

EVERY DAY
IS HOOVER DAY
AT

SABIN'S

167 MAIN ST. EAST

Try our Special
Hoover Sea Food Plate
on Meatless Days, \$1.00

We serve a special
Poultry Plate on Sundays

HOOVERIZE—SABINIZE

LITTLE MISS MUFFIT

Little Miss Muffit decided to rough it,
All the way west to the Coast.
Her roadster was trim and her figure was slim,
And her age, maybe twenty, at most.

From Sheephead Bay she motored away,
(On KELLY KANT-SLIPS, to be sure)
And she drove to the Fair and back, on the air
With which she set forth on her tour.

After KELLY-SPRINGFIELD TIRES have far exceeded their life expectancy
people keep right on using them—and get away with it.

BARRY TIRE & RUBBER CO.

Phones—Stone 1879
Main 1829

H. E. STANTON, Prop.

8 MONROE AVENUE



Programme—D

Charley Grapewin

Supported by ANNA CHANCE, in

“POUGHKEEPSIE,”

The Split-Second-Comedy of Vaudeville.

Jed Harvey, a salesman.....Charley Grapewin
Mabel Harvey, his wife.....Anna Chance

Time—Present.

Place—Living room, Harvey's home, Yonkers, N. Y.

When the press-agent-newspaper reporter of a small-time vaudeville theater presented his copy to Rochester's foremost dramatic critic, the critic drew his blue pencil through the words "big-time" in the copy and said to the one who thought to put it over, "You know better than that: the Temple is the only Rochester theater holding the big-time franchise."

F. H. Phelps Lumber Co., Inc.

DEALERS IN

LUMBER, SASH, DOORS, BLINDS and TRIM

LONG LEAF PINE A SPECIALTY

Phones: Stone 720; Main 720

ON THE "FIRE"ING LINE

For the past 30 years we have protected an ARMY
of satisfied patrons against

LOSS BY THE WORST ENEMY IN THE WORLD **FIRE**
with our IRON CLAD FIRE Policy. Join our
Ranks TO-DAY.

JAMES MALLEY & SON

307 E. & B. BLDG.

AGENTS

BOTH PHONES

Commercial Union Assurance Co.

One of the Oldest, Largest and Strongest Companies in the World.

Members of Fire Underwriters Association of Rochester, N. Y.

Programme—E

Little Billy

Vaudeville's Tiniest Headliner.

Inasmuch as some of the newspapers (newspapers that know better) refer to some small-time vaudeville as "big-time," it might be well to state that the Temple Theater is the only theater in Rochester that can play big-time. All the others are restricted to the cheaper brand.

AFTER THE PERFORMANCE
VISIT THE

WHITCOMB HOUSE RATHSKELLER

FIRST-CLASS JAZZ MUSIC
FOR DANCING
WITH
HAYES, DOIG AND PIAZZA

Hours:

From 6 to 8 10:30 to 1 A. M.

AS AN INVESTMENT

We have an attractive offer to make to our customers.

We are releasing a small amount of our stock for sale to our customers, and there is a profit-sharing proposition attached to this.

Wouldn't you like to know more about it?

IN THE MEANTIME

WAR MILK

Is making a great hit. The Food Administration recommends its use.

PHONE US FOR DETAILS.

BRIGHTON PLACE DAIRY CO.

1757 EAST AVENUE

Park 46, Park 47

Chase 296

Breakfast Table Wonder Workers

There's an appetizing fascination about the brewing of coffee by means of an Electric Percolator.

That this is true may best be proved by including an Electric Coffee Percolator in your breakfast table equipment.

Add to it the Electric Toaster, by means of which the various tastes of those about your table may be catered to with unfailing satisfaction and you have an equipment that produces the satisfied smile and cheerful atmosphere so desirable at breakfast and, heretofore, so hard to attain.

No, the picture is not overdrawn. We have simply stated the facts. Get an Electric Coffee Percolator and Electric Toaster and check up the merits of our statements.

PRICES

Electric Percolator, \$9.50 Electric Toaster, \$5.00

SATISFACTORY OPERATION GUARANTEED OR NO SALE.

'PHONE US

We'll send them promptly.

Rochester Railway and Light Co.

Programme—F

T. Roy Barnes & Bessie Crawford

A Package of Smiles.

If you like slap-stick, seltzer water comedy don't come to the Temple; that sort of comedy has been relegated to the small-time, and there is any amount of small-time in Rochester.

SEND YOUR BOY

Something in the musical line for his entertainment. He needs something of the sort.

Mandolins,
Guitars,
Viollins,
Ukuleles,
Banjo-
Mandolins,
Ukulele-
Banjos.



EVERYTHING IN MUSIC
AND MUSICAL
INSTRUMENTS

Zonophones,
Kazoos,
Flageolets,
Mouth Organs,
Ocarinas,
Jewsharps,
Solophones,

GOOD SKATING
EVERY AFTERNOON AND EVENING
Stratford Roller Rink
(Where The Nice Folks Skate)
CLINTON AVENUE NORTH

The ads in this program are read at 11 performances each week by the buying public of Rochester and suburban towns. Now is the time to call their attention to your Spring and Easter products.

Phone us for rates.

Stone 1165, Main 871.

If you made more than \$19 a week during 1917 you have to make an income tax return. If you don't make a report, you may have to pay a fine. Better get it off your mind today.

Programme—G

Bill---Bailey & Cowan---Lynn

The Banjoker and Songster.

Sons of Syncopation.

The Baby Grand Piano used in this act is from the warerooms of E. W. Edwards & Son.

It is computed by theatrical experts that the Temple Theater turns into the government more war tax than any five theaters in Rochester combined.

TWO WELL-KNOWN EATING PLACES

THE PEKIN

12 SOUTH AVE.

THE MANDARIN

39 CLINTON AVE. NORTH

High Class Chinese-American Restaurants

We cater to after theater parties, to those wishing something different in restaurant offerings

Try our daily luncheon, 30 cents, served from 11 A. M. to 2 P. M.

BEFORE YOU PLACE YOUR ORDER

for your

1918 Office Printing

let us show you samples of our

Embosso

Print

This method has the style and finish of Engraving at a very small cost over ordinary printing. You'll be surprised how it will add an appearance of "class" to your stationery.

Just mail us a sample of your stationery, and we will send you a proof in this work without cost to you. Do it to-day.

WM. M. LEAHY

Printer

25 - 28 Reynolds Arcade

WM. M. LEAHY PRINTER

BOTH PHONES

25 REYNOLDS ARCADE

Programme—H

Percy Athos & Greta Read

Australia's Artistic Whirlwind Patineurs
Presenting

- | | |
|------------------------------------|-----------|
| 1. Skating Song | Mr. Athos |
| 2. Figure and Fancy Skating | Mr. Athos |
| 3. Trick Skating | Mr. Athos |
| 4. Solo | Miss Read |
| 5. Whirl of Paris Waltz | Miss Read |
| Concluding with their | |
| 6. Marvelous Butterfly Swing | |



Rochester Phone 2265 Stone
Bell Phone 3985 Main

YOUNG'S Shell Oyster and Fish Market

ALL KINDS OF SEA FOOD IN SEASON
LOBSTERS, SCALLOPS, ETC.

114 MAIN STREET WEST

Programme—I

American War News Weekly

Our Boys in Camp.

Memories of a Pleasant Evening

A great many people like to keep their programs as a souvenir or reminder of a particularly pleasant evening. Here is space to jot down a few little aids to pleasant

Memories of Day.....Date.....191.....

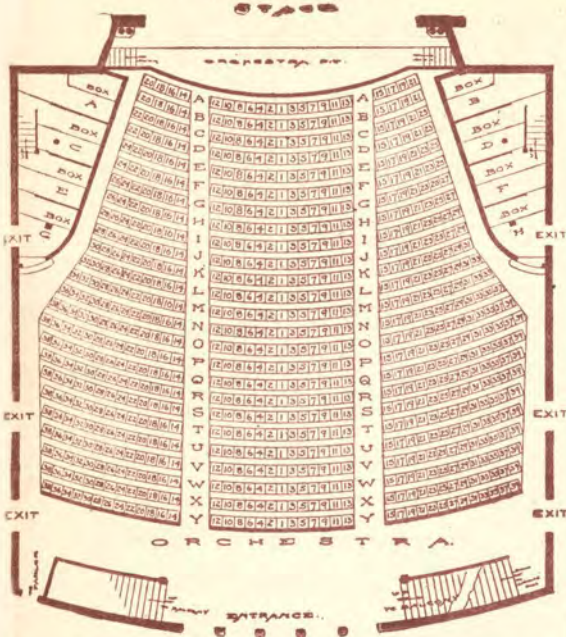
Dinner at.....

Saw the Play with

Friends or Distinguished People I Saw

• Supper at.....

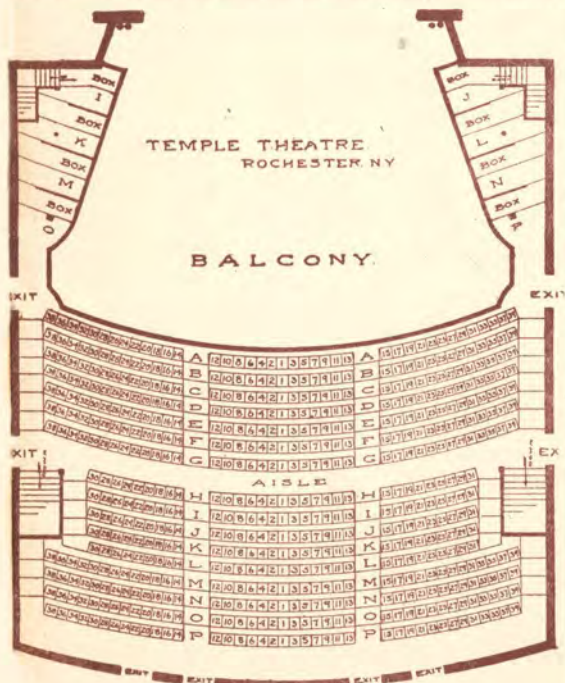
TEMPLE THEATER



NOTICE

Look around NOW and choose the nearest exit to your seat. In case of excitement, walk, not run, to that exit. Do not try to beat your neighbor to the street.

R. ANDREW HAMILTON,
Commissioner of Public Safety.



Put Your Car in Storage for the Winter and Save Money by Calling a Taxi

Consider what winter weather and slush do to the paint—consider the cost of extra tires—consider the cost and bother of chains—consider engine trouble—consider the thousand and one things that mean time, trouble, loss of money and temper. Just figure it out on paper and we'll give you our figures showing how you may have a car and driver at your beck and call for less money.

Call a Rochester Taxi
Anytime from Any
Place for Anywhere

Rochester Taxicab Co.

MAIN 375 STONE 310

70-78 Clinton Av. S.

A minute from this theater

COME IN AND SEE WHY YOU SHOULD BUY *Wards* QUALITY FURS This Week



THE moment you see genuine, luxurious SCARFS and MUFFS at nearly half price, you certainly will be tempted to buy. You cannot resist. Everyone exclaims: "How can you sell such exquisite Furs so reasonable!"

Repairing and Remodeling Furs at Reasonable Prices.

WONDERFUL NEW SWEATERS



Wards Charming Wool Slip-On Sweaters are the talk of the town. Very attractive and pretty, and remember, the prices are lower now than they will be if you delay. Come this week for first choice.

Wards

29-31 CLINTON AVENUE SOUTH