

TEMPLE THEATER



THE ROCKAWAY
ROTISSERIE



23 MAIN ST. EAST

BOX OFFICE REGULATIONS

OPEN from 9 a. m. to 9 p. m.

REQUESTS BY MAIL for Reservation of Seats or Boxes must necessarily be accompanied by check or current funds to secure the desired reservation, and if the return of the seats is desired, a self-addressed stamped envelope must accompany order.

REQUESTS BY TELEPHONE for Reservation of Seats or Boxes can only be observed until 3 p. m. of day of performance, unless special arrangements be made.

Bell Phone 6 Main.

Home Phone 990.

Attention is invited to the plan adopted for the permanent reservation of seats for patrons who wish to attend performances each week. Seats may be reserved for the season by leaving name at the box office, selecting location and indicating the matinee or evening performance for which they will be required each week. Seats so engaged will be laid aside and held until the day previous to the performance. Patrons are thus assured the same seats each week.

SUGGESTIONS FOR PATRONS

Physicians who anticipate being summoned are requested to leave the number of their seats at the box office.

Lost Department—All articles found in this theater should be left at the box office, where they will be restored to the owner. Inquiries intended for this department may be directed to Manager or Superintendent.

Parlors—Women's parlor is at the left of the foyer as you enter the theater, and gentlemen's smoking room is at right, down stairs.

Attaches—Every attache of this theater is eager to lend every possible attention and courtesy to its patrons. Any information required will be cheerfully given, and it is unnecessary to tender gratuities, as the practice is not permitted by the management, and renders the recipient subject to dismissal.

• Any Suggestion that may conduce to the comfort or convenience of the patrons of this theater will be gladly entertained.

Temple Theater

ROCHESTER, N. Y.

COMPANION THEATER TO THE

TEMPLE THEATER

DETROIT, MICH.

MOORE-WIGGINS CO., Limited, Proprietors

J. H. MOORE, . . . General Manager

J. H. FINN, . . . Resident Manager

EXECUTIVE STAFF

Booking Manager, CARL D. LOTHROP

Treasurer, . . . GEORGE F. GREEN

Stage Manager . . . BERT CALEY

PRICES

EVENING

Orchestra, First 10 Rows, . . . 75c

Remainder of Lower Floor, . . . 50c

Balcony, First 7 Rows, . . . 35c

Remainder of Floor, . . . 25c

Upper Balcony, . . . 15c

MATINEES

Entire Lower Floor, . . . 25c

Holidays, . . . 50c

Upper Balcony, . . . 10c

BOXES

Evening, . . . 75c

Matinee, . . . 50c

1,000 Reserved Balcony Seats at Matinee Performances, Saturdays and Holidays excepted, 10c.

REMEMBER THIS!

The Motion Pictures Entitled "The Retreat of the Germans at the Battle of Arras" are Genuine War Pictures
Guaranteed by the British
Government.

The serial motion pictures "The Retreat of the Germans at the Battle of Arras," now on view in this theater, cost the chain of theaters of which the Temple is a link the sum of \$300,000.00. Do not fail to wait for them at the close of the regular vaudeville. While history is being made on the battle-fields of Europe, the British Government is recording it on the film that the present war may be retold accurately and vividly in the future. The first series of pictures made for the archives of the British Museum was "The Retreat of the Germans at the Battle of Arras." Realizing the need of funds for war relief, William K. Vanderbilt arranged with the British Government to exhibit these pictures throughout the United States, the proceeds of such exhibitions to go to various organizations active in war relief. The highest bidders for these pictures proved to be the vaudeville powers, and, therefore, they are to be seen exclusively in the theaters controlled by these powers, the entire proceeds going to the suffering abroad through Mr. Vanderbilt. These pictures are by all odds the greatest war pictures ever made. The terror and excitement of the colossal struggle with one army of millions driving another before it, bring to your realization probably for the first time just what modern warfare really means. The heroism of the British forces, the gallantry of the French, the wonderful work of undaunted Belgium; in fact, the marvelous test of strength and courage of every soldier on the Western battle front are vividly portrayed. Nothing has ever been seen in films to equal "The Retreat of the Germans at the Battle of Arras," and it is only by special arrangement with the British Government that they are presented to the patrons of the Temple.



TEMPLE THEATER

Rochester's Foremost Playhouse Devoted to J. H. Moore Vaudeville

One of the Handsomest and Safest Theaters in the World

MOORE-WIGGINS COMPANY, Ltd., Proprietors

J. H. MOORE, General Manager

J. H. FINN, Resident Manager



NEXT WEEK

Every Act But Two on This Bill is Entirely New to Rochester Patrons.

WEEK BEGINNING MONDAY AFTERNOON, OCT. 29

Late Stars of Ziegfeld's "Follies of 1917"

CARL RANDALL & ERNESTINE MYERS

In Characteristic Divertissements.

BOSTOCK'S RIDING SCHOOL

The Cleverest Combination of High-School Riding and Comedy Ever
Introduced in Vaudeville.

Lulu--McCONNELL & SIMPSON--Grant

The Kansas City Stars in a Presentation of What Happens in Kansas, Entitled
"AT HOME."

MISS RAE ELEANOR BALL

The Princess of the Violin Who Captivates the Young and Old, the Rich and Poor.

McMAHON, DIAMOND & CHAPLOW

The Dancing Novelty, "THE RAG DOLL."

KENNEY & HOLLIS

Nut Comedians.

THE LITTLEJOHNS

Novelty Juggling.

SPECIAL FEATURE ATTRACTION!

Last Episode of the Wonderful British Government War Pictures

"THE RETREAT OF THE GERMANS AT THE BATTLE OF ARRAS."

Presented Under the Supervision of W. K. Vanderbilt, Acting for the
British War Relief Fund.

Two Performances Daily

Doors open for Matinee at 1:45 P. M.; Curtain at 2:15 P. M.

Doors open for Evening at 7:45 P. M.; Curtain at 8:15 P. M.

Acts are run in the order given only when feasible to do so, and the routine is subject to change
without notice.



After the Performance we are going to

The Odenbach Hofbrau

to enjoy some of the good things they have to eat.

The exceptional entertainment features give this restaurant a metropolitan atmosphere found nowhere else in Rochester.

REICHARDT'S NEW YORK SOCIETY ORCHESTRA

We have never found a man who objected
to his wife or daughter having an account
in this bank.

The ALLIANCE BANK

Main Street East and Stone Street

IN THE CENTER OF THE RETAIL DISTRICT

NEW GOLD and SILVER LACE HATS SECOND FLOOR

Fashioned of exquisite materials
according to the latest Paris and
New York dictates. The ideal hats
for all semi dress, dancing and
theater parties.

\$5.00 \$7.50 \$10.00

DUFFY-POWERS CO.



Your Private Papers

will not be handled by other persons or subject to loss by fire, or theft if they are placed in a Safe Deposit Box in our fire and burglar proof Vault.

For \$3.00 a year you can rent a box which will hold a number of documents, such as Bonds, Deeds, Mortgages, Insurance Papers, Jewelry, etc.

ROCHESTER TRUST

MAIN ST., W.—AND—EXCHANGE ST.

SAFE DEPOSIT CO.

Teall's

Attractive Luncheons

11:30 A. M. TO 2:30 P. M.

75c.

AFTER THE MATINEE

SALADS

DAINTY SANDWICHES

TEA

FRENCH PASTRY

ICE CREAM AND CAKE

A la Carte up to 6:30 P. M.

I. Teall Catering Co.

263 EAST AVE.



Tea Wagons
Gate Leg Tables
Chafing Dishes
Coffee Percolators
Casseroles
Serving Trays

Electric Cooking
Utensils
Brown Bamboo Ware
Mahogany Nut Bowls
Jardinières
Pedestals

A Gift of Furniture

is one that assures both present and lasting appreciation. This is an ideal store from which to select gifts that add comfort and beauty to the home. We present below a suggestive list at prices from \$1.00 and upwards.

Candlesticks
Book Blocks
Footrests
Mirrors
Cedar Chests
Ladies' Desks
Library Tables
Sewing Tables
Dressing Tables
Card Tables
Smokers' Tables
Willow and Kalex
Chairs
Mahogany Rockers
Console Tables
Utility Boxes
Bookcases
Piano Benches
Reclining Chairs
Rugs, all sizes

Upholstered Rockers
Davenport
Magazine Racks
Music Cabinets
Floor and Table
Lamps
Boudoir Lamps
Dinnerware
Fancy China
Silverware
Pictures
Mantel Clocks
Chime and Hall
Clocks
Mahogany Tea Tables
Muffin Stands
Telephone Stands
Jardiniere Stands
Mahogany Ferneries

Visitors
Welcome

H.B. GRAVES CO.
78 STATE ST., ROCHESTER, N.Y.

"Rochester's
Home Store"

GREAT WESTERN CHAMPAGNE

BRUT SPECIAL 1903

(Absolutely Brut)

SPECIAL RESERVE

(Very Dry)

EXTRA DRY

(Medium Dry)

**SPARKLING RED
BURGUNDY**



The only
American
Champagne
ever awarded a
Gold Medal at a
Foreign Exposition

Paris Exposition, 1900, France
Paris Exposition, 1887, France
Paris Exposition, 1889, France
Vienna Exposition, 1873, Austria
Bruxelles Exposition, 1897, Belgium
Bruxelles Exposition, 1910, Belgium

Pleasant Valley Wine Co.
RHEIMS, NEW YORK

OLDEST AND LARGEST MAKERS OF CHAMPAGNE IN AMERICA

ORCHESTRA, JOS. MONK, DIRECTOR

"The Rag-time Volunteers Are Off to War".....Jas. F. Hanley
"Lookout Mountain".....Halsey K. Mohr

Programme—A

Mankichi & Company

Flowers of the Flowery Kingdom.



**THE ASIA
CHINESE
AND**

AMERICAN RESTAURANT

Ladies' and gentlemen's business
dinner from 11 A. M. to 2 P. M.
daily, 25c.

Special supper 5 to 8 P. M.

After theater suppers.

Special Sunday dinners.

68 MAIN STREET EAST

Opposite Democrat & Chronicle Office

Formerly Tokio Restaurant

Phone, Stone 3251

Orders put up in boxes to take home

Extravagance

It is extravagance to buy expensive clothes unless you get full value out of them by always keeping them in good condition.

RAPP'S

**Cleansers Dyers
Tailors**

64 Clinton Avenue North

Opposite Masonic Temple

Both Phones

Auto Service

LuNette Shop for Women

One of the advantages of shopping in the specialty shops, is the care at which garments are selected. It's obvious that we must exclude colors that are bad, styles that are hard to wear and fabrics that will not give the utmost of satisfaction, for we want you to come again as you always do when you select your women's wear here.

Thirty-five East Avenue

DANCING CLASSES

"Miss —— is a graduate whom I find it an unusual pleasure to endorse as a teacher. She is a conscientious instructress, is endowed with a natural faculty for imparting dancing and has studied our art for years, and in every branch with a scientific mind. I count her an honor to our profession and a very fortunately chosen guide for any student."

Signed,
LOUIS CHALIF,
163 West 57th St., N. Y. City.

The above is the testimonial of the young lady teacher, graduate and post-graduate of the famous Russian dancing master

LOUIS CHALIF, of N. Y. City.

Classes are held at

PRINCE STREET HALL

47 PRINCE ST.

SATURDAYS

2:30 P. M., for little girls—æsthetics.
4 P. M., older girls and ladies—æsthetics.
Telephone Stone 120

ALICE M. HARTIGAN

HATS

73 CLINTON AVE. SOUTH

NEXT TO VICTORIA THEATER

UP STAIRS

PHONE MAIN 2937-W

We have just received a shipment of candy from Page & Shaw

"THE CANDY OF EXCELLENCE"

POWERS CANDY STORE

TEMPLE THEATER BUILDING

45 CLINTON AVE. SOUTH

We serve delicious tea at our fountain

Programme—B

Venita Gould

Impersonations.

Carl Randall and Ernestine Myers, late principals in the Ziegfeld "Follies," will offer one of the most artistic acts ever brought to the attention of vaudeville patrons when they appear on the stage of the Temple Theater next Monday afternoon, for a full week's engagement.

DO NOT MISS THE BRITISH WAR PICTURES THIS WEEK, THEY ARE WELL WORTH YOUR TIME.

THEATER PATRONS MUST DO THEIR BIT

WAR TAX ON ADMISSIONS

The war tax on admissions to places of amusement, including vaudeville, legitimate, motion picture and ALL other theaters, provides that a tax of one cent for each ten cents or fraction thereof SHALL BE PAID BY THE PERSON PAYING FOR SUCH ADMISSION. This applies to all paid admissions except that in case of a child under twelve the admission tax is but one cent regardless of the amount of admission paid by or for such child.

To illustrate: The tax on a 10 cent admission is but one cent; on a 15 cent admission, two cents; on a 25 cent admission, three cents; on a 35 cent admission, four cents; on a 50 cent admission, five cents; and on a 75 cent admission, eight cents.

PASSES: Persons using passes to a theater must pay the same tax that they would have paid if the admissions had been paid for at the regular box-office prices.

This admission tax becomes effective on November 1, 1917, and our patrons will be notified in ample time as to the method that will be used in the collection of the same.

Liberty Bonds

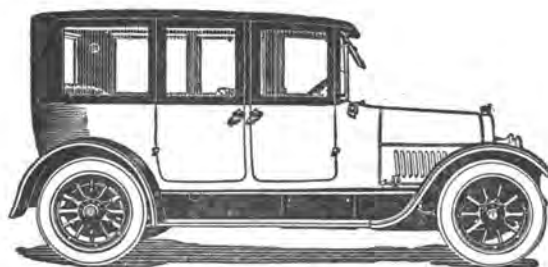


Year 'round cars

Pay 4%

We have available out of our allotment of Type 57 Cadillac cars two Broughams—and two only.

Deliveries within six weeks—in plenty of time for Christmas.



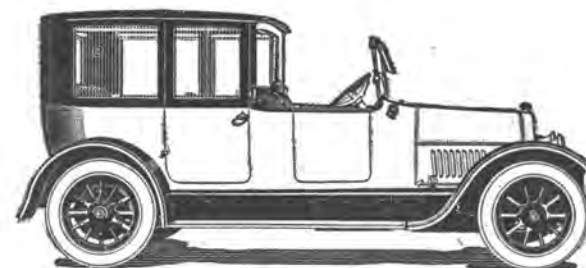
The Brougham seats five

Mabbett-Bettys Motor Car Co.

252-262 Court Street

"Just East of Clinton"

Cadillac Cars announce unmistakably the substantial character of their ownership.



The Town Limousine is here.

Mabbett-Bettys Motor Car Co.

252-262 Court Street

"Just East of Clinton"

Have you put in Anti-Freeze?

RECORD HEADQUARTERS

This is indeed a good place to shop for VICTOR RECORDS. You can hear records under comfortable home surroundings, away from distracting noises.

If you haven't time to listen to them here, try our "home on approval" plan.

MUSIC LOVERS' SHOPPE, Inc.
41 EAST AVENUE



Programme—C

Jane Connelly & Players

Offer "BETTY'S COURTSHIP,"

A Comedy of Modern Life, by Erwin Connelly.

Miss Connelly.....as Betty
Jack W. Lewis.....as Billy
Erwin Connelly.....as Billy's Father

Scene—The attractive garden attached to the ornamental cottage where Betty makes her home.



**JAPANESE
WARE**

Flowers

Edwin C. Kaelber
49 Clinton Ave South
Diagonally opp. Lyceum Theatre

SABIN'S

AFTER THEATER SERVICE

We specialize on Luncheons and Suppers for After Theater Parties. Whether it's a matinee or evening performance, you will enjoy a Dainty Luncheon or Supper before or after the curtain falls.

**STEAKS, CHOPS,
SEA FOODS, Etc.**

Eggleston Hotel Building
Main St. East, cor. Stone St.

HUMPTY DUMPTY.

Humpty Dumpty crashed into a wall;
Humpty Dumpty had a great fall.
All the King's horses and all the King's men,
Couldn't repair Humpty's motor again.
But Humpty got up and remarked with a smile,
"At that, I lowered the mark for a mile!
Things are never so bad, they mightn't be worse—
If those Kellys had blown, I'd have needed a hearse."

There are more miles in a Kelly-Springfield tire than there are words in this program. Don't count the words—buy the tire and get the mileage.

BARRY TIRE & RUBBER CO.

Phones—Stone 1879, Main 1829

8 MONROE AVENUE



Programme—D

The Indian Orator and Singer

The Chief Caupolican

In Song and Speech.

Bostock's Riding School, a really great equestrian act, with comedy, will be the third special feature of the Temple bill next week. This act is generally given the headline position in the high-class vaudeville theaters of the country.

"THE RETREAT OF THE GERMANS AT THE BATTLE OF ARRAS," SEEN AT THE CONCLUSION OF THE VAUDEVILLE OILIO IS A SERIES OF WONDERFUL PICTURES OF THE OPERATIONS IN FLANDERS.

THE REGINA MILLINERY

247 MAIN ST. E., ROCHESTER, N. Y.

OPP. SIBLEY'S

FEATURING TRIMMED HATS

\$3.95

\$4.95

\$7.50

Our collection of trimmed millinery is now more comprehensive this season than ever, duplicating with unusual exactitude the artistic beauty and fine materials of much higher priced models. New York's greatest style originators have contributed to this wonderful collection of high-class millinery and the prices cannot be equaled anywhere in the city.

VISIT OUR 2nd FLOOR DEPT. FOR TRIMMED AND UNTRIMMED HATS
AT LOWEST PRICES IN ROCHESTER.

EXCLUSIVE
STYLES

The ^{Millinery Importers} Regina

AT POPULAR
PRICES

ON THE "FIRE"ING LINE

For the past 30 years we have protected an ARMY
of satisfied patrons against

LOSS BY THE WORST ENEMY IN THE WORLD **FIRE**
with our IRON CLAD FIRE Policy. Join our
Ranks TO-DAY.

JAMES MALLEY & SON

307 E. & B. BLDG. AGENTS BOTH PHONES

Commercial Union Assurance Co.

One of the Oldest, Largest and Strongest Companies in the World.

Members of Fire Underwriters Association of Rochester, N. Y.

Programme—E

Joseph Bennett & Edward Richards

In the Dramatic Sensation

"DARK CLOUDS."

Hamilton Travers.....Edward Richards
Howard James.....Joseph Bennett

Scene—The James residence. Time—Midnight.

After the Performance
visit the

**WHITCOMB HOUSE
RATHSKELLER
CABARET**

Hours :

From 9 P. M. until 1 A. M.

**BRIGHTON PLACE
DAIRY CO.**

ANNOUNCE

WAR MILK

10c.

PER QUART

Several Types in Each of Three Well-Known Makes of Gas Ranges to Select From

The design features of each of the three makes of gas ranges that we carry are substantially different.

There is no good reason that we know of why one's personal taste in a matter of design should not be catered to in selling gas ranges, the same as it is catered to in the selling of household furniture generally.

HAVE YOU SEEN OUR LINE OF GAS RANGES?

If not, we would be glad to have you pay us a visit. You will not be urged to buy. We just want you to know. The goods and service will do the rest.

Rochester Railway and Light Co.

Programme—F

Lina Abarbanell

Star of "Madame Sherry"—"Flora Bella,"

In Songs and Dances,

Assisted by W. Rainey Gault.

The Baby Grand Piano used in this act is from the warerooms of E. W. Edwards & Son.

LINA ABARBANELL

Featuring the popular song hits of the season, together with all other songs, are obtainable at the

NOVELTY MUSIC SHOP

"Where the Song Hits come from"

Open evenings until 11 o'clock

Phones: Main 4633, Stone 1185

67 CLINTON AVE. NORTH

Next to Gordon Theater

45 Seconds From Main Street

DANCE AND GRACEFUL ARTS

Make it a point to see A. ELLIS SMITH about learning newest steps and dances he secured in New York, including the "Jazz" and Tango.

FOR GRACE, join one of the "Futurist Classes" now forming on Aesthetic, Advanced Classic, Interpretive, Toe, Russian, Egyptian, Grecian, Spanish, Scotch and Court Dances, Special Classes for Stage, Professional, Solo and Children's Dances. PRIVATE LESSONS AT YOUR CONVENIENCE.

A. ELLIS SMITH

"LESSONS THE LESSONS"
Hours 10 A. M. to 10 P. M. Daily

Represents Experience, Sincerity and Achievement

Main 5637

42 CLINTON AVE. N., Next to Railway & Light Co.

After The Show

why not go to the

HOTEL ROCHESTER

The Crystal Dining Room is very inviting—the service delightful—and prices **more moderate** because we have

No Music

No Cabaret No Dancing

therefore can serve you better at less cost—and we cater to only **nice people**.

By all odds the Restaurant de Lux of the City.

MILTON ROBLEE, Manager.

Call at the

Alma Elizabeth Shop

when in need of a pretty blouse.

A wonderful line of

GEORGETTE CREPE at \$4.50

CREPE DE CHENE at \$3.95

and SATIN at \$3.98

229 Mercantile Bldg.

One flight up

Alma M. Englert

Elizabeth H. Hartung

Phone Main 6448

Programme—G

George Whiting & Sadie Burt

"Songsayings."

NOTE—Miss Burt's and Mr. Whiting's songs are written by Mr. Whiting and William B. Friedlander.

Rae Eleanor Ball, the crown princess of the violin, will receive a hearty welcome from patrons of the Temple Theater next week. Miss Ball is a rara avis in the vaudeville field, and she will bring much pleasure to her hosts of friends in Rochester.

THE \$300,000.00 PAID BY THE BIG-TIME VAUDEVILLE THEATERS FOR "THE RETREAT OF THE GERMANS AT THE BATTLE OF ARRAS," GOES INTO THE TREASURY OF THE BRITISH WAR RELIEF. DO NOT MISS THESE PICTURES.

DON'T READ THIS

Partial list of the very latest and best in sheet music: "For You a Rose," "The Moonlight Waltz," "A Little Bit of Honey," "Keep on Hopin'," "Sing Me Love's Lullaby," "I May Be gone a Long, Long Time," "Love Like the Dawn Came Stealing."

WHEN YOUR WANTS ARE MUSICAL COME TO



"When the Great Red Dawn is Shining" is a beautiful new song.

"Cottage in God's Garden" by the writer of "A Perfect Day"

EVERYTHING IN MUSIC
AND MUSICAL
INSTRUMENTS

IF YOU ARE PARTICULAR

ABOUT YOUR FOOD
VISIT

THE PEKIN

12 SOUTH AVE.

THE NEW MANDARIN

39 CLINTON AVE. N.

High Class Chinese-American Restaurants

COZY ALCOVES.

PAINSTAKING WAITERS.

GOOD FOOD.

A LA CARTE SERVICE



**Our Daddies are fighting at
the front for YOU.**

Back them up.

Buy a

U. S. GOVERNMENT LIBERTY BOND
CENTRAL BANK



Programme—H

Tom Smith & Ralph Austin

All Fun.

Lulu McConnell and Grant Simpson will offer a rollicking comedy at the Temple Theater next week called "At Home." It is just the sort of fun to drive away the blues.

IF MOVING PICTURES HURT YOUR EYES, GET YOUR NEIGHBOR TO TELL YOU ABOUT THE WONDERFUL BRITISH WAR PICTURES NOW ON VIEW IN THE TEMPLE THEATER.

MEN!

After you have seen our splendid line of Woolen Fabrics, and placed an order for your winter outfit, you will be enabled to purchase more LIBERTY BONDS than you are now anticipating.

A fortunate purchase before prices advanced enables us to make to your measure a suit or overcoat of guaranteed material, now difficult to obtain, at no higher cost to you than you would pay for a ready-made garment.

Lose no time—see us at your first opportunity.

Co-Operative Tailoring Co.

130-132 SOUTH AVENUE

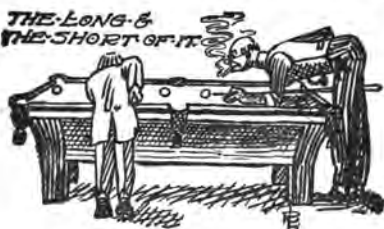
FORMERLY AT 35 REYNOLDS ARCADE

JOEL MOSES

HOME PHONE 4092 STONE

FRANK BUSH

THE LONG &
THE SHORT OF IT



POCKET BILLIARD PARLOR

First-Class Equipment
Moderate Prices

The only English Billiard Table in the city

WESLEY STERNER

PROPRIETOR

67 MAIN ST. WEST

WM. M. LEAHY PRINTER

BOTH PHONES

25 REYNOLDS ARCADE

Programme—I

"Retreat of the Germans at the Battle of Arras"

Second Instalment of the British Government War Pictures, taken by enlisted motion picture operators of the British Army for the archives of the British War office.

NOTE—The \$300,000.00 paid for these pictures by the B. F. Keith Booking Agency, with which the Temple Theater is exclusively affiliated in Rochester, goes intact to the British Relief Fund.



Rochester Phone 2265 Stone
Bell Phone 3985 Main

YOUNG'S Shell Oyster and Fish Market

ALL KINDS OF SEA FOOD IN SEASON
LOBSTERS, SCALLOPS, ETC.

114 MAIN STREET WEST

Memories of a Pleasant Evening

A great many people like to keep their programs as a souvenir or reminder of a particularly pleasant evening. Here is space to jot down a few little aids to pleasant Memories of Day.....Date.....191.....

Dinner at.....

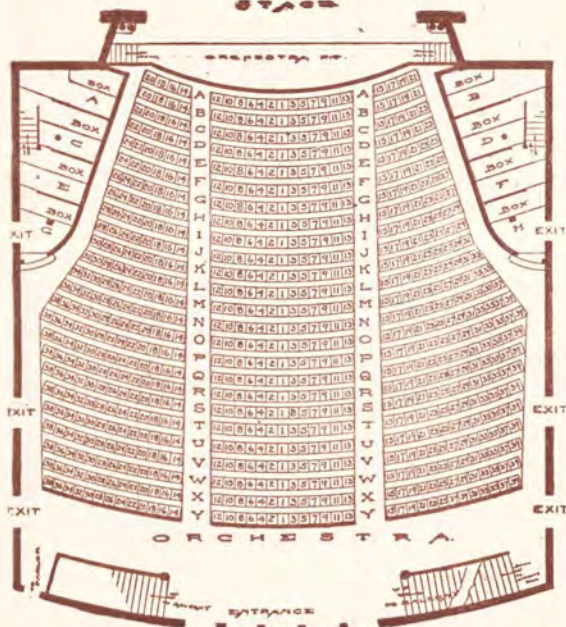
Saw the Play with

Friends or Distinguished People I Saw

Supper at.....

TEMPLE THEATER

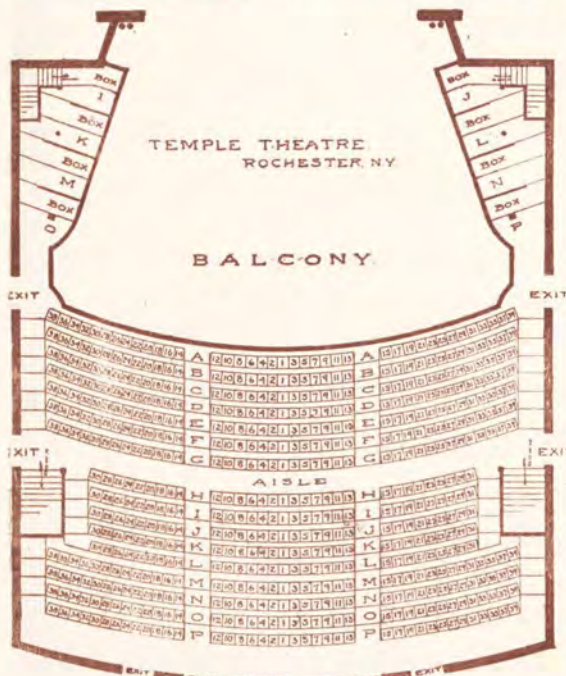
STAGE



NOTICE

Look around NOW and choose the nearest exit to your seat. In case of excitement, walk, not run, to that exit. Do not try to beat your neighbor to the street.

R. ANDREW HAMILTON,
Commissioner of Public Safety.



W M LEAHY.



PRINTER

Is Your Car Outside?

Yes, you KNOW you left it there when you came in, but is it there now?

Cars have been stolen from Clinton Avenue.

So that yours won't be the next, leave it with us. It will be kept inside, dry and warm.

Only 25c.

Cheap Insurance

Rochester Taxicab Co.

MAIN 375

STONE 310

70-78 Clinton Ave. S.

A minute from this theater.

Wards

13th ANNIVERSARY SALE

Coats, Suits, Dresses, Waists

AT SPECIAL SALE PRICES ALL THIS WEEK.

Hundreds of Coats of newest materials in Pom-Pom, Velours, Bolivia, trimmed with fur or plain, half lined or full silk lined at \$20 up.

Dresses arrive every day in the latest Gabardines, French Serge, Satins, Taffetas, etc., at \$15 up.

Tailor Made Suits and exquisite waists to match in Taupe, Brown, Green, Navy, Burgundy and Black.

FURS

Of Quality

Purchased
before the great
advance in
cost.

We are satisfied
with small
profits.

We have
planned
exceptional
values all this
week,
during our 13th
Anniversary
Sale.



FURS

Of Quality

Red Fox Scarfs
Cross Fox Scarfs
Taupe
Fox Scarfs
Lucille
Fox Scarfs
Poirot
Fox Scarfs
Gray Fox Scarfs
Black Fox Scarfs

and

Beautiful Muffs
to match

"Remodeling and Repairing Furs at Reasonable Prices"

Wards

29-31 CLINTON AVENUE SOUTH