

# TEMPLE THEATER



~ REFINED ~  
VAUDEVILLE  
SEASON  
1917-18

THE ROCKAWAY  
ROTISSERIE



23 MAIN ST. EAST



## BOX OFFICE REGULATIONS

OPEN from 9 a. m. to 9 p. m.

**REQUESTS BY MAIL** for Reservation of Seats or Boxes must necessarily be accompanied by check or current funds to secure the desired reservation, and if the return of the seats is desired, a self-addressed stamped envelope must accompany order.

**REQUESTS BY TELEPHONE** for Reservation of Seats or Boxes can only be observed until 3 p. m. of day of performance, unless special arrangements be made.

Bell Phone 6 Main.

Home Phone 990.

Attention is invited to the plan adopted for the permanent reservation of seats for patrons who wish to attend performances each week. Seats may be reserved for the season by leaving name at the box office, selecting location and indicating the matinee or evening performance for which they will be required each week. Seats so engaged will be laid aside and held until the day previous to the performance. Patrons are thus assured the same seats each week.

## SUGGESTIONS FOR PATRONS

Physicians who anticipate being summoned are requested to leave the number of their seats at the box office.

**Lost Department**—All articles found in this theater should be left at the box office, where they will be restored to the owner. Inquiries intended for this department may be directed to Manager or Superintendent.

**Parlors**—Women's parlor is at the left of the foyer as you enter the theater, and gentlemen's smoking room is at right, down stairs.

**Attaches**—Every attache of this theater is eager to lend every possible attention and courtesy to its patrons. Any information required will be cheerfully given, and it is unnecessary to tender gratuities, as the practice is not permitted by the management, and renders the recipient subject to dismissal.

• Any Suggestion that may conduce to the comfort or convenience of the patrons of this theater will be gladly entertained.

## Temple Theater

ROCHESTER, N. Y.

COMPANION THEATER TO THE

## TEMPLE THEATER

DETROIT, MICH.

MOORE-WIGGINS CO., Limited, Proprietors

J. H. MOORE, . . . General Manager

J. H. FINN, . . . Resident Manager

### EXECUTIVE STAFF

Booking Manager, CARL D. LOTHROP

Treasurer, . . . GEORGE F. GREEN

Stage Manager . . . BERT CALEY

## PRICES

### EVENING

Orchestra, First 10 Rows, . .	75c
Remainder of Lower Floor, . .	50c
Balcony, First 7 Rows, . . .	35c
Remainder of Floor, . . .	25c
Upper Balcony, . . . .	15c

### MATINEES

Entire Lower Floor, . . .	25c
Holidays, . . . .	50c
Upper Balcony, . . . .	10c

### BOXES

Evening, . . . .	75c
Matinee, . . . .	50c

1,000 Reserved Balcony Seats at Matinee Performances, Saturdays and Holidays excepted, 10c.

# TWO GREAT ACTS

## Headline the Temple Theater Bill Next Week

The stage does not boast of a finer actress than Florence Roberts. This distinguished star from the legitimate stage, who has cast her fortunes at present in the vaudeville field, has to her credit so many splendid roles that her right to a position as a star has never been questioned. Miss Roberts makes her initial appearance in vaudeville at this theater next week. Unlike many prominent players from the dramatic stage, Miss Roberts made her entry into vaudeville a serious thing. She went to a worthy and well-known author for her vehicle, and then surrounded herself with a supporting company worthy of any play. J. Hartley Manners, author of that tremendous success, "Peg o' My Heart," wrote for Miss Roberts a one-act play called "The Woman Intervenes." It is a typical Manners' playlet—a little drama full of heart interest. It has been a big success everywhere, being original in plot and full of the real story-telling quality. The scene takes place in a fashionable apartment in New York City, and concerns the doings of a clever woman in a difficult position, calling for the nicest diplomacy and tact. The plot is rich in situations and the lines of course are bright and sparkling. This will be one of the most talked-of plays ever offered in the Temple, author and star doing absolute justice towards each other. Clifford Stork, Tom Maguire and George Farren, sterling players, capably support Miss Roberts.

---

"Somewhere in France" is a trench scene depicting life at the front. This novel skit is the result of the observation of John Barclay, one of the members of the quartette presenting "Somewhere in France."

The scene is a trench in Flanders. A Canadian, a Tommy, a Highlander and an Irishman are on duty. They are holding a quiet post, and while waiting to be relieved they amuse themselves in trench fashion. The songs they sing are those popular with the troops "over there," and one of the recitations is "St. Julien," a poem written in the trenches, telling how a Canadian regiment held the "corner" even after their ranks had been reduced to seven.

The excellent scenic effects make "Somewhere in France" doubly realistic.



# TEMPLE THEATER

Rochester's Foremost Playhouse

Devoted to J. H. Moore Vaudeville

One of the Handsomest and Safest Theaters in the World

MOORE-WIGGINS COMPANY, Ltd., Proprietors

J. H. MOORE, General Manager

J. H. FINN, Resident Manager



---

## NEXT WEEK

---

The Only High Grade Vaudeville Theater in Rochester Appeals to the Public with the Following Brilliant Array of Stars:

First Time on the Local Vaudeville Stage—The Distinguished Emotional Actress

### FLORENCE ROBERTS

One of the Foremost of the Galaxy of American Actresses Identified with New York's Noteworthy Dramatic Productions of the Passing Decade, Supported by Her Own Sterling Broadway Organization, in Her Metropolitan Triumph

"THE WOMAN INTERVENES."

A comedy brochure, unique in theme, rich in situations, sparkling in dialogue, reflecting the ripe genius of its writer, the famous Anglo-American playwright, J. Hartley Manners, author of "Peg o' My Heart" and other internationally popular plays.

An Episode of the Trenches

### "SOMEWHERE IN FRANCE"

A Military-Scenic-Singing Novelty by John Barclay

With Messrs. Roy Torrey, Charles Walt, Horace Rowe and John Barclay.

The Cheeriest Comedienne and Fashion Plate Songstress

### FRANCES KENNEDY

Making Her First Appearance Here with a Cycle of Exclusive Song Hits by William B. Friedlander and Herbert Moore.

Exceedingly Fast and Excruciatingly Funny

### THE THREE RUBES

BOWERS, WALTERS and CROCKER.

"The Speaker of the House"

### MILT COLLINS

As "THE PATRIOT."

### JAY GOULD & FLO LEWIS

In Their Musical Comedietta "HOLDING THE FORT."

By Lewis Westlyn.

### MILLER & LYLES

"BLESSED WITH IGNORANCE."

Artists from the Concert Stage

### FRITZ & LUCY BRUCH

Violoncello and Violin.

### MOORE'S WORLD LIBRARY

Things You Ought to Know.

Two Performances Daily

Doors open for Matinee at 1:45 P. M.; Curtain at 2:15 P. M.

Doors open for Evening at 7:45 P. M.; Curtain at 8:15 P. M.

Acts are run in the order given only when feasible to do so, and the routine is subject to change without notice.

## **The Odenbach Restaurant**

And, as you leave the theater remember that  
we have a really worth while musical treat—

### **REICHARDT'S NEW YORK SOCIETY ORCHESTRA**

and some delightfully good things to eat—  
ready for you—and your guests.

Everything that the most fastidious woman could desire in  
the way of banking facilities and service is found in the  
**Woman's Department**

of the Alliance Bank. It is pleasantly surprising how  
many of your friends you will meet here.

## **The ALLIANCE BANK**

**Main Street East and Stone Street**

**IN THE CENTER OF THE RETAIL DISTRICT**

**GOOD THINGS TO EAT AT ALL HOURS**

## **YOUNG CHINA**

**CHINESE AND AMERICAN RESTAURANT**

**194 MAIN ST. EAST—GLENNY BLDG.**

Home Phone Stone 1162

Bell Phone Main 3141

**Luncheon served from 11 A. M. to 2 P. M., 30c. Special Supper 5 to 8 P. M.**

**Private dining rooms for ladies and gentlemen. No extra charge.**

**Open every day, Sundays and holidays also, from 11 A. M. to 1 A. M.**

**A la carte service 11 A. M. to 1 A. M.**



## Build up a Surplus Fund

Present day conditions emphasize very strongly the importance—indeed the necessity—of everyone building up a surplus fund of ready cash.

A Savings Account in this strong bank is an ideal method of building up a surplus fund. We cordially invite you to call at the bank, or you can send in your deposits safely by mail in any amount.

BEGIN TODAY.

### ROCHESTER TRUST

MAIN ST., W.—AND—EXCHANGE ST.

### SAFE DEPOSIT CO.

Have you had Lunch or Tea at

## TEALL'S ?

A dainty, attractive, restful room, the best of food with a distinctive flavor, quiet service—an ideal combination for women of refinement.

Regular Lunch 11:30 to 2:30  
75c.

Afternoon Tea 3 to 6:30  
from 25c. up.

A la carte all day till 7 P. M.

No extra charge for parlors for card parties.

Telephone and reserve your tables.

## I. Teall Catering Co.

263 EAST AVE.

Park Ave. car to Union St.—then just a step around the corner.

## Dainty Bedroom Furniture

A daintily furnished bedroom, which shall combine with its cheerfulness not only artistic qualities, but convenience and practicability, is an ideal which certainly every woman is justified in seeking to attain.



A glance through our stock will offer an opportunity to choose from a large number of inviting pieces, in a most satisfactory range of designs. Our stock of bedroom furniture is very complete and has been very carefully chosen. In all grades, from the most inexpensive to the very best, quality of material and workmanship is exceptional for the money.



## H.B. GRAVES CO. INC.



78 STATE STREET, ROCHESTER, N. Y.

# GREAT WESTERN CHAMPAGNE

**BRUT SPECIAL 1903**  
(Absolutely Brut)

**SPECIAL RESERVE**  
(Very Dry)

**EXTRA DRY**  
(Medium Dry)

**SPARKLING RED  
BURGUNDY**



The only  
American  
Champagne  
ever awarded a  
Gold Medal at a  
Foreign Exposition

Paris Exposition, 1900, France  
Paris Exposition, 1887, France  
Paris Exposition, 1889, France  
Vienna Exposition, 1873, Austria  
Bruxelles Exposition, 1887, Belgium  
Bruxelles Exposition, 1910, Belgium

**Pleasant Valley Wine Co.**  
**RHEIMS, NEW YORK**

OLDEST AND LARGEST MAKERS OF CHAMPAGNE IN AMERICA

ORCHESTRA, JOS. MONK, DIRECTOR

"On the Road to Home Sweet Home".....Van Alstyne  
Selection—"The Girl in the Film".....  
"There'll Be a Hot Time for the Old Men, etc.".....Geo. Meyer

## Programme—A

**Jack---Williams---Cora**

Versatile Entertainers.

## THE ASIA CHINESE AND AMERICAN RESTAURANT

Notwithstanding the high cost of food-stuffs we give you the advantage of the very best quality of food, prepared by a careful chef, at no higher cost to you than elsewhere.

Try our noon-day lunches and you'll come again.

**68 MAIN STREET EAST**

Opposite Democrat & Chronicle Office

Formerly Tokio Restaurant

Phone, Stone 3251

Orders put up in boxes to take home

## Get the Habit

of telephoning for our auto whenever a garment needs dry cleaning. Then your clothes will always be ready to wear when you need them.

# RAPP'S

**Cleansers Dyers  
Tailors**

**64 Clinton Avenue North**

Opposite Masonic Temple

Both Phones

**Auto Service**

# *Lu Nette* SHOP

35 EAST AVENUE

ROCHESTER, N. Y.

## GARMENTS, DISTINCTIVE AND DIFFERENT

We have for our chief purpose the showing of the finest garments made, from the viewpoint of style, quality and service, at moderate cost.

SUITS, COATS, DRESSES, WAISTS,  
CORSETS and UNDERMUSLINS.

## CLASSIC PHOTOGRAPHY

Our studio is admirably equipped to prove to you, if not already conversant with the style of our photographs, that we are not a bit egotistic when we use the word "classic" in describing the kind of photographs that we make.

You'll also find our Folders very exclusive.

**PHOTOS**  
**SMITH-CURRY**  
**16 STATE ST**  
ELEVATOR

## ALICE M. HARTIGAN

## HATS

73 CLINTON AVE. SOUTH

NEXT TO VICTORIA THEATER

UP STAIRS

PHONE MAIN 2937-W



**MORSE'S "MILK CHOCOLATES" ARE THE BEST**

**We sell them**

# **POWERS CANDY STORE**

**TEMPLE THEATER BUILDING**

**45 CLINTON AVE. SOUTH**

**Our Hot Chocolates are justly famous**

## **Programme—B**

### **Gertrude Holmes & Robert Buchanan**

**The Yesterday of Song.**

**Furniture furnished by the Frank Rivers Company, 286-288 South Ave.**

Florence Roberts, who comes to the Temple next week in the J. Hartley Manners sketch "Woman Intervenes" is regarded generally by the big managers in the theatrical business as one of the really great actresses now before the public.

**Stop Throwing Away Your Old Razor Blades**

## **Safety Razor Blades RE-EDGED**

**Better than New—Satisfaction Guaranteed.**

**ROCHESTER KEEN EDGING COMPANY**

**296 Main Street East**

### **CHIROPRACTIC SPINAL ADJUSTMENTS**

**Relieve the sick when everything else has failed**

## **LEVE BROTHERS**

**ROCHESTER'S STANDARD CHIROPRACTORS**

**154 EAST AVENUE**

**Suite 200 201  
Consultation Free**

**Cor. Scio St.  
Hours: 2-5 and 7-8 P. M.**

**Phone Stone 6712  
Sundays and other hours by appointment**

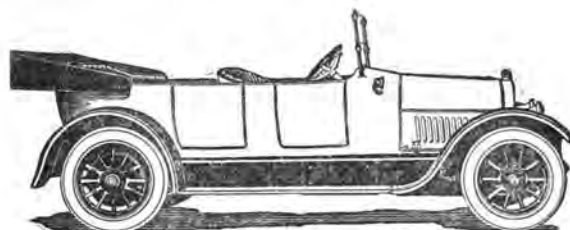
**THIRD LIBERTY LOAN**  
Three billions of "iron men" needed to  
Help Halt Hindenburg.

Type 57



Year 'round cars.

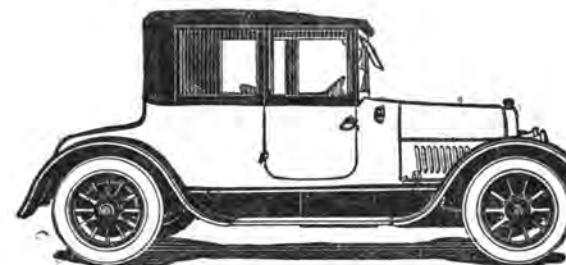
**SUBSCRIPTIONS START SATURDAY**  
—but your bank will enter  
**YOUR subscription NOW.**



**The Four-Passenger is a nobby little rig.**

Already the days are longer, and  
winter-weary folk are responding  
to the call of spring.

Are you ready—with your  
Cadillac—to enjoy the full  
season's driving?



**The Victoria.**

Spring is Here

Have you ordered your  
new Cadillac—or are  
you courting disappointment?

**Mabbett-Bettys Motor Car Company**

**252-262 Court Street**

**"Just East of Clinton"**

HOME, AN EASY CHAIR AND THE

## VICTROLA!

What a combination for comfort and enjoyment after the day's work is done.

\$20 TO \$400.

**MUSIC LOVERS' SHOPPE, Inc.**

41 EAST AVENUE

VICTROLAS AND VICTOR RECORDS EXCLUSIVELY



## Programme—C

### Thos.---Patricola & Myer---Ruby

In "THE GIRL AND THE DANCING FOOL."

J. Hartley Manners, who wrote "Woman Intervenes," to be seen at the Temple next week with Florence Roberts in the principal role, is the same man who wrote "Peg O' My Heart" for Laurette Taylor.

## PLANKED BONELESS SHAD

A DAINTY,  
DELIGHTFUL, DELICIOUS  
DELICACY.

*Prepared by a process known only to us—no mutilation of the fish—not a bone to mar the pleasure of eating, served on Maple Planks with ROE, VEGETABLES, BREAD AND BUTTER—for one person, 95c.; for two, \$1.80—obtainable only at the*

**HOTEL ROCHESTER**

MILTON ROBLEE, Manager

## HOOVERIZE—SABINIZE

EVERY DAY  
IS HOOVER DAY  
AT

# SABIN'S

167 MAIN ST. EAST

Try our Special  
**Hoover Sea Food Plate**  
on Meatless Days, \$1.00

We serve a special  
Poultry Plate on Sundays

HOOVERIZE—SABINIZE

### HUMPTY DUMPTY

Humpty Dumpty crashed into a wall;  
Humpty Dumpty had a great fall.  
All the King's horses and all the King's men,  
Couldn't repair Humpty's motor again.  
But Humpty got up and remarked with a smile,  
"At that I lowered the mark for a mile!  
Things are never so bad, they mightn't be worse—  
If those KELLYS had blown, I'd have needed a hearse."

The only complaints about KELLY-SPRINGFIELD TIRES are complaints about their scarcity.

### BARRY TIRE & RUBBER CO.

Phones—Stone 1879  
Main 1829

H. E. STANTON, Prop.

8 MONROE AVENUE



## Programme—D

### George & Dick Rath

American Athletes

In "A STUDY IN ENDURANCE."

A sensational war skit called "Somewhere in France," without any gruesome incidents, will be the special headline feature of the Temple bill next week. It is believed that it will resemble somewhat the feature of Jack Norworth's "Odds and Ends," seen at the Lyceum this season.

## F. H. Phelps Lumber Co., Inc.

DEALERS IN

LUMBER, SASH, DOORS, BLINDS and TRIM

LONG LEAF PINE A SPECIALTY

Phones: Stone 720; Main 720

### TWO WELL-KNOWN EATING PLACES

#### THE PEKIN

12 SOUTH AVE.

#### THE MANDARIN

39 CLINTON AVE. NORTH

High Class Chinese-American Restaurants

We cater to after theater parties, to those wishing something different  
in restaurant offerings

Try our daily luncheon, 30 cents, served from 11 A. M. to 2 P. M.



# FIRES EVERYWHERE

Your Home or Building May Be Next

Protect Your Property by Insuring TO-DAY

with

## JAMES MALLEY & SON

307 E. & B. BLDG.

AGENTS

BOTH PHONES

Commercial Union Assurance Co.

One of the Oldest, Largest and Strongest Companies in the World.

Members of Fire Underwriters Association of Rochester, N. Y.

## Programme—E

### McIntyre & Heath

In "THE MAN FROM MONTANA."

Cast

Henry .....	James McIntyre
Blutch .....	T. K. Heath
Dealer .....	Otto T. Johnstone

Furniture furnished by the Frank Rivers Company, 286-288 South Ave.

AFTER THE PERFORMANCE  
VISIT THE

## WHITCOMB HOUSE RATHSKELLER

FIRST-CLASS JAZZ MUSIC  
FOR DANCING

Hours :  
10:30 to 1 A. M.

## AS AN INVESTMENT

We have an attractive offer to make to our customers.

We are releasing a small amount of our stock for sale to our customers, and there is a profit-sharing proposition attached to this.

Wouldn't you like to know more about it?

IN THE MEANTIME

## WAR MILK

Is making a great hit. The Food Administration recommends its use.

PHONE US FOR DETAILS.

## BRIGHTON PLACE DAIRY CO.

1757 EAST AVENUE  
Park 46, Park 47      Chase 296

## Consider the Matter Now

Speed in water heaters is largely a question of heating surface and burner construction. The speedier the heater the more it costs. That's why prices range from \$21.50 up. We can meet your hot water requirements. Tell us about your needs in the hot water line and we'll suggest the size and type of heater best adapted for the job, and

WE WILL GUARANTEE SATISFACTORY OPERATION OR NO SALE.

'PHONE US.

Our representative will call for your order.

## Rochester Railway and Light Co.

Have you purchased your Thrift Stamp to-day?

## Programme—F

### Margaret Young

Descriptive Singer of Character Songs.

Frances Kennedy, the pet of the LaSalle Stock Company, of the LaSalle Theater, Chicago, has taken a plunge in the vaudeville sea and will go "over the top" at the Temple next week.

## NEW COLUMBIA RECORDS FOR APRIL

"A Baby's Prayer at Twilight," "There's a Lump of Sugar Down in Dixie," "I'll Come Back to You When It's All Over," "I'm Writing to You, Sammy," "There's a Service Flag Flying at Our House," "There'll Be a Hot Time in the Old Town Tonight."

WHEN YOUR WANTS ARE MUSICAL COME TO

"Cohen  
at the  
Real  
Estate  
Office."



EVERYTHING IN MUSIC  
AND MUSICAL  
INSTRUMENTS

"Cohen  
Calls His  
Tailor on  
the Phone,"  
etc., etc.,

We are exclusive distributors for Cleveland Standard, Norwalk and Dayton Airless Tires. Also the famous Portage Fabric and Cord Tires. Vulcanizing our Specialty.

We call for and deliver.

## New York Auto-Tire & Supply Co.

COR. S. FITZHUGH AND SPRING STREETS

MAIN 4398

STONE 4614

## Programme—G .

England's Musical Comedy Stars

**Clark & Hamilton**

In "A WAYWARD CONCEIT."

Furniture furnished by the Frank Rivers Company, 286-288 South Ave.

## FRED J. BRAYER



Distributor for the  
Alcazar Range and Heater Co.,  
New York,

### COMBINATION COAL AND GAS RANGE

The Alcazar is just the range for summer use. It saves time, fuel, and gives you the advantage of a nice cool kitchen.

PHONES :

GLENWOOD 530

GENESEE 1606

Let us Show You Samples of Our

# Embosso Print

This method has the style and finish of Engraving at a very small cost over ordinary printing. You'll be surprised how it will add an appearance of "class" to all your stationery.



Just mail us a sample of your stationery, and we will send you a proof in this work without cost to you. Do it to-day.

---

WM. M. LEAHY, Printer

25-28 REYNOLDS ARCADE



HAT CLEANING

SHOE SHINING

Phone Stone 1927-J

**"Cap" Roberson**

TONSorial PARLORS

Union Shop

17 South Avenue

**The Meisch Cafe**

"CAP" ROBERSON, Proprietor

NOON DAY LUNCHES

362-366 Court St,

## Programme—H

### World Library

Interesting and Instructive.

Bowers, Walters & Crocker, who are old-time vaudevillians, but who have been featured with Ziegfeld's "Follies," and other big musical comedy productions the past several seasons, will be one of the big laughing hits of the Temple bill next week.



Rochester Phone 2265 Stone  
Bell Phone 3985 Main

**YOUNG'S**

**Shell Oyster and Fish Market**

ALL KINDS OF SEA FOOD IN SEASON  
LOBSTERS, SCALLOPS, ETC.

114 MAIN STREET WEST

### Memories of a Pleasant Evening

A great many people like to keep their programs as a souvenir or reminder of a particularly pleasant evening. Here is space to jot down a few little aids to pleasant

Memories of Day..... Date..... 191.....

Dinner at.....

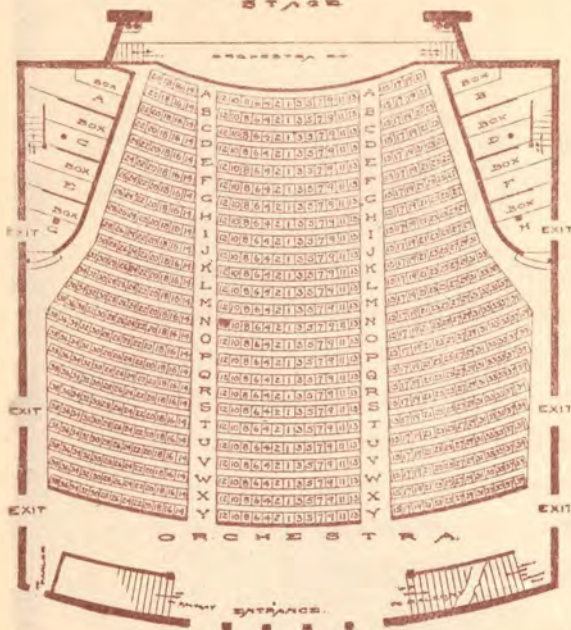
Saw the Play with.....

Friends or Distinguished People I Saw.....

Supper at.....

# TEMPLE THEATER

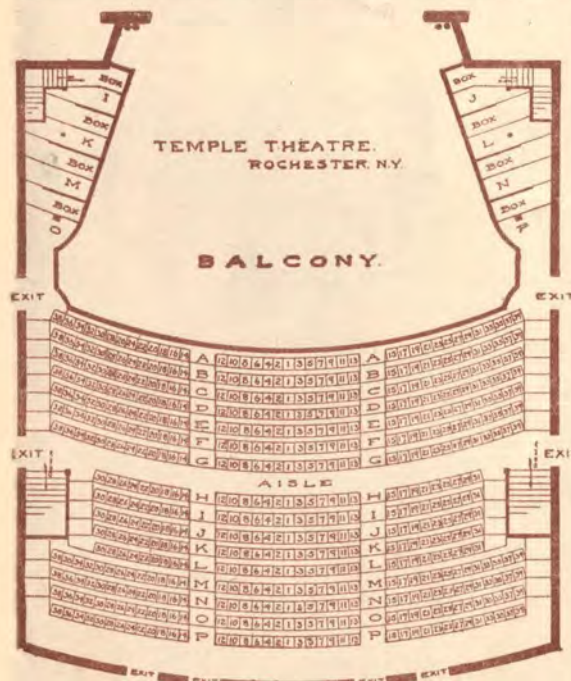
STAGE



## NOTICE

Look around NOW and choose the nearest exit to your seat. In case of excitement, walk, not run, to that exit. Do not try to beat your neighbor to the street.

**R. ANDREW HAMILTON,**  
Commissioner of Public Safety.



W M LEAHY PRINTED

# Is Your Car Outside?

Yes, you KNOW you left it there when you came in, but is it there now?

Cars have been stolen from Clinton Avenue.

So that yours won't be the next, leave it with us. It will be kept inside, dry and warm.

## Only 25c.

Cheap Insurance

## Rochester Taxicab Co.

MAIN 375 STONE 310

70-78 Clinton Ave. S.

A minute from this theater.



# NEW SUITS AND COATS

The prettiest, the most enchanting of the new season's creations, are on display in our new store, all on the ground floor, no crowded elevators. Spring brides are especially invited—all are invited who have to give thought to the price that they pay for quality wearing apparel.

We have a few Sample Coats, only one of a kind, in Silvertone, at special prices.

## CHILDREN'S COATS

Latest Styles in Checks and Serges  
2 to 12 years

\$5 to \$15

### FUR SCARFS

Summer Scarfs, Exclusive Styles, at  
\$10 to \$50



# Wards

29-31 CLINTON AVENUE SOUTH